



# C220

# User's Manual



R00

**Trademarks**

All brand and product names are trademarks or registered trademarks of their respective companies.

**Note**

The information in this manual is subject to change without notice.



# Table of Contents

<b>1</b>	<b>Getting Started</b>	<b>1</b>
1.1	Understanding Hardware Components	1
	Front Components	1
	Back Components	2
	Right-Side Components	2
	Top Components	3
	Bottom Components	3
1.2	Performing the Initial Start Up	4
1.3	Using Your Device in a Vehicle	6
	Using the Device Holder	6
	Connecting the Car Charger	6
1.4	Operating Basics	7
	Turning On and Off	7
	Navigating on the Screen	7
	Home Screen	8
1.5	Inserting a SD/MMC Card	9
<b>2</b>	<b>Settings</b>	<b>11</b>
2.1	Starting and Exiting Settings	11
2.2	Backlight	12
2.3	Volume	13
2.4	Screen	14
2.5	Power	15
2.6	Date&Time	16
2.7	Change Language	17
<b>3</b>	<b>Troubleshooting and Maintenance</b>	<b>19</b>
3.1	Restart, Reset, and Shut Down	19
	Restarting Your Device	19
	Shutting Down Your Device	19
3.2	Troubleshooting	20
	Power Problems	20
	Screen Problems	20

	Connection Problems.....	20
	GPS Problems.....	21
3.3	Maintaining Your Device .....	21
<b>4</b>	<b>Regulatory Information .....</b>	<b>23</b>
4.1	Regulations Statements .....	23
	Class B Regulations.....	23
	European Notice .....	24
4.2	Safety Precautions .....	25
	About Charging .....	25
	About the Charger.....	25
	About the Battery .....	26



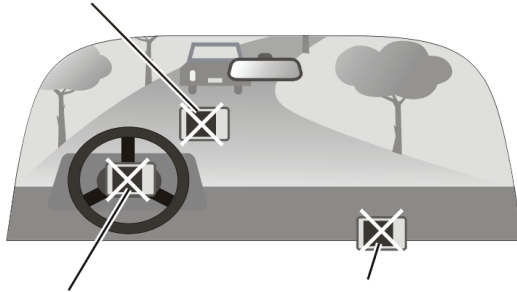
# Warnings and Notices

- For your safety, do not operate the controls of the product while driving.
- Use this product with caution. The product is a navigation aid. It does not provide exact measurements of direction, distance, location or topography.
- The calculated route is for reference only. Always follow the posted traffic signs, speed limits and road restrictions.
- When you leave your car, do not leave your device on the dashboard in direct sunlight. This can cause the battery to overheat and malfunction.
- The Global Positioning System (GPS) is operated by the United States government, which is solely responsible for its performance. Any change to the GPS system can affect the accuracy of all GPS equipment world-wide.
- GPS satellite signals cannot typically pass through solid materials (except glass). GPS location information is not typically available inside buildings, tunnels, or underground parking lots.
- A minimum of 4 GPS satellite signals is needed to calculate your GPS position. Signal reception can be affected by weather events or overhead obstacles (e.g. dense foliage and tall buildings).
- Other wireless devices in the vehicle may interfere with the reception of satellite signals and cause the reception to be unstable.

- A device holder is needed when using the device in a car. Be sure to place the device in an appropriate place, so as not to obstruct the driver's view, or deployment of airbags.

Do not mount where the driver's field of vision is blocked.

Do not place on the dashboard unsecured.



Do not mount in front of airbag panels.

Do not mount in front of an airbag field of deployment.

# 1

## Getting Started

### 1.1 Understanding Hardware Components

**NOTE:** Depending upon the specific model purchased, the color of your device may not exactly match the device shown in this manual.

#### Front Components



Ref	Component	Description
①	<b>Touch Screen</b>	Displays the output of your device. Tap the screen with your stylus to select menu commands or enter information.
②	<b>Charge Indicator</b>	Flashes bright amber to indicate that the battery is charging, and turns green when the battery is fully charged.

# Back Components



Ref	Component	Description
1	Speaker	Sends out music, sounds and voice.

# Right-Side Components





Ref	Component	Description
①	SD/MMC Slot	Accepts an SD (Secure Digital) or MMC (MultiMedia Card) card for accessing data such as map data.
②	Headphone Connector	Connects to stereo headphones.

## Top Components



Ref	Component	Description
①	External Antenna Connector	This connector (under rubber dust cover) allows use of an optional external GPS antenna with magnetic mount, which may be positioned on top of the car for better GPS signal reception in areas with poor reception.
②	Power Button	Turns on and off the device.

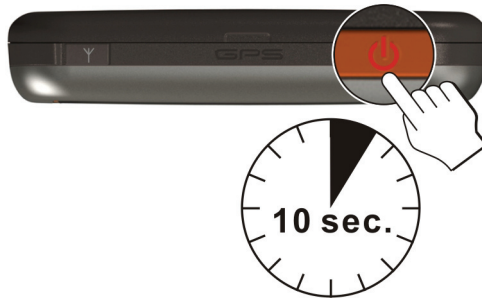
## Bottom Components




Ref	Component	Description
①	Mini-USB Connector	Connects to the USB cable or in-car power cable.

## 1.2 Performing the Initial Start Up


1. Make sure that power is supplied to your device. (See the next section.)
2. For the initial start up, press the power button for 10 seconds to turn on your device.

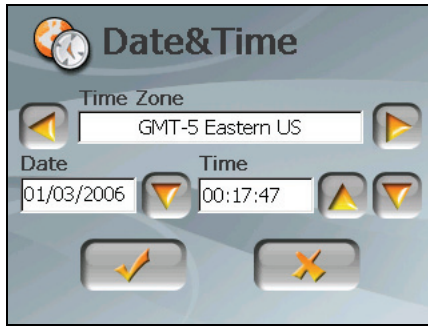


**| NOTE:** For normal operation, briefly press the power button to turn on and off your device.

3. The “Change Language” screen appears. Tap the left/right arrow button to select the desired language. Then, tap the  button.



4. The “Date&Time” screen appears. Tap the appropriate arrow button to select the time zone, date, and time. Then, tap the  button.



5. The Home screen appears. You can now use your device.



## 1.3 Using Your Device in a Vehicle

### Using the Device Holder

**CAUTION:**

- Select an appropriate location for the device holder. Never place the holder where the driver's field of vision is blocked.
- If the car's windshield is tinted with a reflective coating, an external antenna (optional) may be needed to route the antenna to the top of the car through a window. When closing the car window, be careful not to pinch the antenna cable

Use the device holder to fix your device in a vehicle. Make sure that the GPS antenna has a clear view of the sky.



### Connecting the Car Charger

The car charger supplies power to your device when you are using the device in a car.

**CAUTION:** To protect your device against sudden surges in current, connect the car charger only after the car engine has been started.

1. Connect one end of the car charger to the power connector of your device.
2. Connect the other end to the cigarette lighter in the car to power and charge your device. The indicator on the car charger lights in green to indicate that power is being supplied to your device.



**CAUTION:** For optimal performance of the lithium battery, take note of the following:

- Do not charge the battery where the temperature is high (e.g. in direct sunlight).
- There is no need to fully discharge the battery before charging. You can charge the battery before it is discharged.
- If you will not use the product for a long period of time, be sure to fully charge the battery at least once every two weeks. Over discharge of the battery can affect the charging performance.

**NOTE:** Your device can also be charged when it is connected to a desktop computer via the USB cable. If you intend to charge your device in this way, turn off your device so that it takes less time to charge the battery.

## 1.4 Operating Basics

### Turning On and Off

For normal operation, turn off the device by briefly pressing the power button. The device enters a suspended state.



When you next briefly press the power button, the system resumes. You will either be back to where you left off or see the Home screen.

**NOTE:** Pressing the power button for a longer duration has a different effect. See Section 3.1 for more information.

### Navigating on the Screen

To operate your device, touch the screen with your fingertip. You can perform the following actions:

- **Tap**  
Touch the screen once with your fingertip to open items or select onscreen buttons or options.
- **Drag**  
Hold your fingertip on the screen and drag up/down/left/right or across the screen.
- **Tap and hold**  
Tap and hold your fingertip until an action is complete, or a result or menu is shown.



## Home Screen

The first time you initialize your device, the Home screen appears. The Home screen is your starting place for various tasks. Tap a button to start a task or open another menu.



Button Name	Description	For Detailed Information
<b>Mio Map</b>	Starts the navigation software.	See the manual supplied with the software.
<b>Settings</b>	Customizes the system settings.	Chapter 2

## 1.5 Inserting a SD/MMC Card

Your device has a SD/MMC slot where you can insert an optional Secure Digital or MultiMediaCard storage card.

To use a SD/MMC card, insert it into the slot, with the connector pointing to the slot and its label facing the front of the device.



To remove a card, first make sure that no application is accessing the card, then slightly push the top edge of the card to release it and pull it out of the slot.

**NOTE:**

- Make sure that no foreign objects enter the slot.
- Keep a SD or MMC card in a well-protected box to avoid dust and humidity when you are not using it.





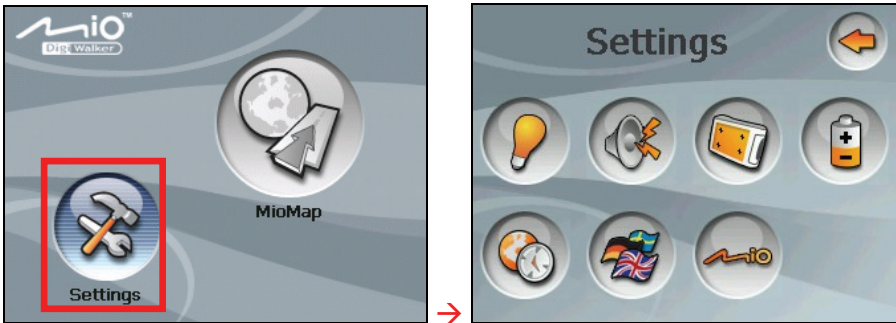
# 2


## Settings

### 2.1 Starting and Exiting Settings

You can customize the system settings such as backlight brightness, volume, and language. Once you change the settings, the new settings will remain until you change them again.

Tap the **Settings** button on the Home screen. The Settings menu appears as shown below.

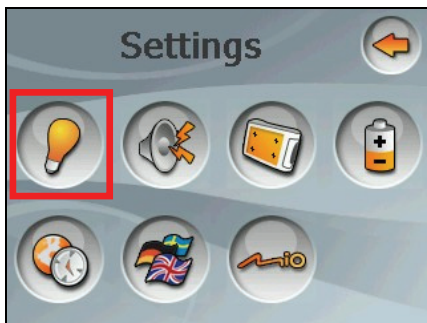


To exit Settings, tap .

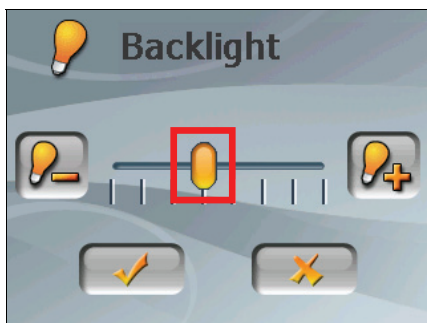
The following sections describe the various buttons and their functions.


## 2.2 Backlight

1. Tap the **Settings** button on the Home screen.
2. Tap the **Backlight** button.



3. Move the knob along the track bar to adjust the brightness of the backlight. To darken the backlight, move the knob to the left. To lighten the backlight, move the knob to the right.



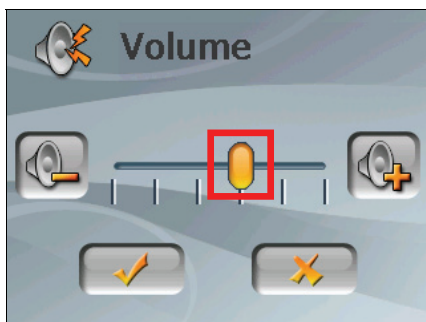
4. Tap  to save the changes.

## 2.3 Volume

1. Tap the **Settings** button on the Home screen.
2. Tap the **Volume** button.



3. Move the knob along the track bar to adjust the volume. To decrease the volume, move the knob to the left. To increase the volume, move the knob to the right.

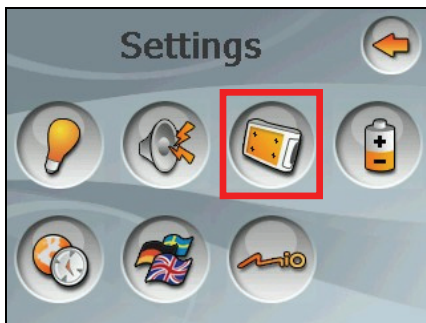



4. Tap  save the changes.

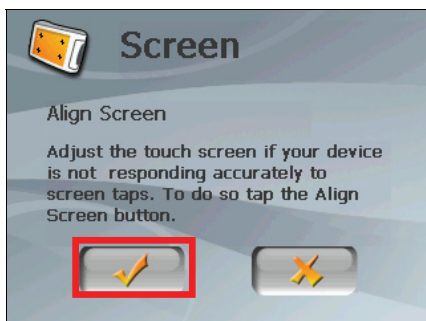
## 2.4 Screen

You can calibrate the touch screen if it is not responding accurately to your taps.

1. Tap the **Settings** button on the Home screen.
2. Tap the **Screen** button.




3. Tap  to start the calibration.



4. Tap and hold the centre of the target.

Carefully press and briefly hold stylus on the center of the target. Repeat as the target moves around the screen.

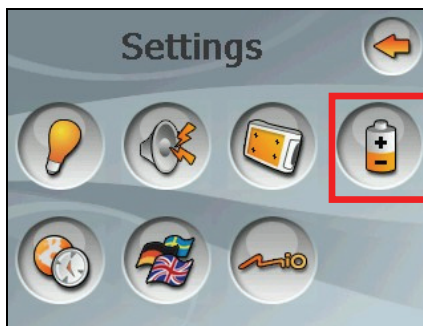


5. When the target moves to another position, tap and hold the centre of the new target. Repeat each time to complete the calibration process.
6. When completed, tap .

## 2.5 Power

To check the remaining power level of your battery and/or set up the power saving feature:


1. Tap the **Settings** button on the Home screen.
2. Tap the **Power** button.



3. The screen shows the remaining power of your battery.

You can set a timer to automatically turn off your device when it is idle for a set period of time. The options include **Never**, **30 minutes**, **20 minutes**, and **10 minutes**.



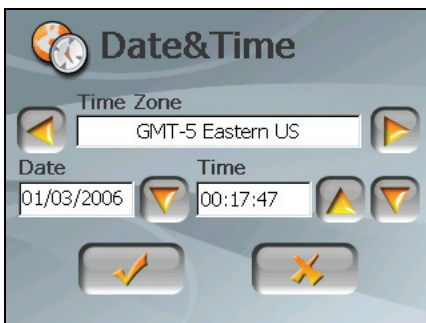
4. Tap  to save the changes.

## 2.6 Date&Time

1. Tap the **Settings** button on the Home screen.
2. Tap the **Date&Time** button.

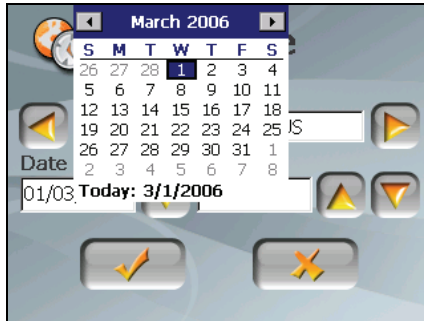



3. To change the time zone, tap the left/right arrow in the “Time Zone” item.



4. To change the date, tap the down arrow in the “Date” item. A calendar pops up. Tap the left arrow on the calendar to go to the earlier month and year or the right arrow to the later month and year. Alternatively, you can tap the month or year on top of the calendar to directly change the month or year.

When the calendar shows the current month, tap the date on the calendar.

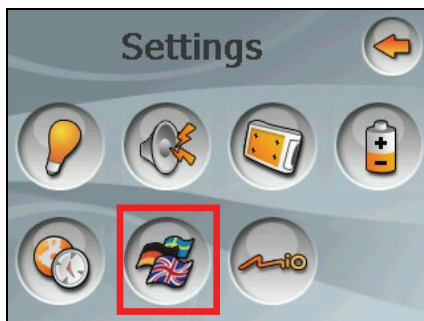


5. To set the time, first tap the hour, minute, or second in the “Time” item and then tap the up arrow to increase or down arrow to decrease the value.
6. Tap  to save the changes.

## 2.7 Change Language



**NOTE:** To change the language of the Mio Map navigation software, use Mio Map settings. (See the document supplied with the navigation software.)

1. Tap the **Settings** button on the Home screen.
2. Tap the **Change Language** button.



3. Tap the left/right arrow button to select the desired language.



4. Tap  to save the changes.
5. Tap the  button for the new setting to take effect.



# 3

## Troubleshooting and Maintenance

### 3.1 Restart and Shut Down

Occasionally, you may need to reset your device. For example, you should reset your system when it stops responding; or appears to be “frozen” or “locked up.”

#### Restarting Your Device

To restart your device, press the power button for 4 seconds until the “Power Off Selection” screen appears and then tap **Restart**.



#### Shutting Down Your Device

If you will not be using the device for a long time, you can shut down the device by pressing the power button for 10 seconds. System settings will be lost. To use the device again, press the power button for 10 seconds.

## 3.2 Troubleshooting

**NOTE:** If you encounter a problem you cannot solve, contact an authorized service center for assistance.

### Power Problems

#### Power does not turn on when using battery power

- The remaining battery power may be too low to run your device. Charge the battery.

### Screen Problems

#### Screen responds slowly

- Make sure that your device is not running out of battery power. If the problem still exists, reset your system.

#### Screen freezes

- Reset your system.

#### Screen is hard to read

- Make sure that the backlight of the display is on.
- Move to a location with more light.

#### Inaccurate response to taps

- Recalibrate the touch screen.

### Connection Problems

#### Cable Connection Problems

- Make sure that your device and your computer are both turned on before trying to establish a connection.

- Make sure that the cable is securely plugged into the USB port on your computer and on the device. Connect the USB cable directly to your computer—do not run the cable through a USB hub.
- Reset your device before connecting the cable. Always disconnect your device before you restart your computer.

## GPS Problems

- When there are no valid signals available, consider the following:
- Make sure that the GPS antenna has a clear view of the sky.
- Note that the GPS reception can be affected by:
  - ✓ Bad weather
  - ✓ Dense overhead obstacles (e.g. trees and tall buildings)
  - ✓ Other wireless device in the car
  - ✓ Reflective car window tint

## 3.3 Maintaining Your Device

Taking good care of your device will ensure trouble-free operation and reduce the risk of damage to your device.

- Keep your device away from excessive moisture and extreme temperatures.
- Avoid exposing your device to direct sunlight or strong ultraviolet light for extended periods of time.
- Do not place anything on top of your device or drop objects on your device.
- Do not drop your device or subject it to severe shock.
- Do not subject your device to sudden and severe temperature changes. This could cause moisture condensation inside the unit, which could damage your device. In the event of moisture condensation, allow the device to dry out completely before use.
- Take care not to sit on the device. We advise not to carry the device in one's back pocket for that reason.
- The screen surface can easily be scratched. Avoid touching it with sharp objects. Non-adhesive generic screen protectors designed specifically for use

on portable devices with LCD panels may be used to help protect the screen from minor scratches.

- Never clean your device with it powered on. Use a soft, lint-free cloth moistened with water to wipe the screen and the exterior of your device.
- Do not use paper towels to clean the screen.
- Never attempt to disassemble, repair or make any modifications to your device. Disassembly, modification or any attempt at repair could cause damage to your device and even bodily injury or property damage and will void any warranty.
- Do not store or carry flammable liquids, gases or explosive materials in the same compartment as your device, its parts or accessories.

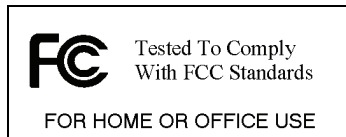
# 4

## Regulatory Information

**NOTE:** Marking labels located on the exterior of your device indicate the regulations that your model complies with. Please check the marking labels on your device and refer to the corresponding statements in this chapter. Some notices apply to specific models only.

### 4.1 Regulations Statements

#### Class B Regulations



#### USA

#### Federal Communications Commission Radio Frequency Interference Statement

**NOTE:**

This equipment has been tested and found to comply with the limits for a Class B digital device pursuant to Part 15 of the FCC Rules. These limits are designed to provide reasonable protection against harmful interference in a residential installation. This equipment generates, uses, and can radiate radio frequency energy and, if not installed and used in accordance with the instructions, may cause harmful interference to radio communications. However, there is no guarantee that interference will not occur in a particular installation. If this equipment does cause harmful interference to radio or television reception, which can be determined by turning the equipment off and on, the user is encouraged to try to correct the interference by one or more of the following measures:

- Reorient or relocate the receiving antenna.

- Increase the separation between the equipment and receiver.
- Connect the equipment into an outlet on a circuit different from that to which the receiver is connected.
- Consult the dealer or an experienced radio/TV technician for help.

Any changes or modifications not expressly approved by the manufacturer could void the user's authority to operate the equipment.

**Please note:**

The use of a non-shielded interface cable with this equipment is prohibited.

Canada

Canadian Department Of Communications

Radio Interference Regulations Class B Compliance Notice

This Class B digital apparatus meets all requirements of the Canada Interference-Causing equipment regulations.

Cet appareil numérique de Classe B respecte toutes les exigences du Règlement Canadien sur le matériel brouilleur.

European Notice

Products with the CE marking comply with Radio & Telecommunication Terminal Equipment Directive (R&TTE) (1999/5/EEC), the Electromagnetic Compatibility Directive (89/336/EEC) and the Low Voltage Directive (73/23/EEC) – as amended by Directive 93/68/ECC - issued by the Commission of the European Community.

Compliance with these directives implies conformity to the following European Standards:

**EN301489-1:** Electronic compatibility and Radio spectrum Matters (ERM), ElectroMagnetic Compatibility (EMC) standard for radio equipment and services; Part 1: Common technical requirements

**EN301489-3:** Electronic compatibility and Radio spectrum Matters (ERM), ElectroMagnetic Compatibility (EMC) standard for radio equipment and services; Part 3: Specific conditions for Short-Range Devices (SRD) operating on frequencies between 9 kHz and 40 GHz

**EN55022:** Radio disturbance characteristics

**EN55024:** Immunity characteristics

**EN6100-3-2:** Limits for harmonic current emissions

**EN6100-3-3:** Limitation of voltage fluctuation and flicker in low-voltage supply system

**EN60950 / IEC 60950:** Product Safety

The manufacturer cannot be held responsible for modifications made by the User and the consequences thereof, which may alter the conformity of the product with the CE Marking.

## 4.2 Safety Precautions

- Prolonged listening of music in maximum volume can damage the ears.

### About Charging

- Use only the charger (UDID, G12PCL-535-B031) supplied with your device. Use of another type of charger will result in malfunction and/or danger.
- This product is intended to be supplied by a LISTED Power Unit marked with “LPS”, “Limited Power Source” and output rated + 5 V dc / 1.0 A”.
- Use a specified battery in the equipment.

### About the Charger

- Do not use the charger in a high moisture environment. Never touch the charger when your hands or feet are wet.
- Allow adequate ventilation around the charger when using it to operate the device or charge the battery. Do not cover the charger with paper or other objects that will reduce cooling. Do not use the charger while it is inside a carrying case.
- Connect the charger to a proper power source. The voltage requirements are found on the product case and/or packaging.
- Do not use the charger if the cord becomes damaged.
- Do not attempt to service the unit. There are no serviceable parts inside. Replace the unit if it is damaged or exposed to excess moisture.

## About the Battery

- Use a specified charger approved by the manufacturer.

**CAUTION:** This unit contains a non-replaceable internal Lithium Ion battery. The battery can burst or explode, releasing hazardous chemicals. To reduce the risk of fire or burns, do not disassemble, crush, puncture, or dispose of in fire or water.

- Important instructions (for service personnel only)
  - ✓ **Caution:** Risk of explosion if battery is replaced by an incorrect type. Dispose of used batteries according to the instructions.
  - ✓ Replace only with the same or equivalent type recommended by the manufacturer.
  - ✓ The battery must be recycled or disposed of properly.
  - ✓ Use the battery only in the specified equipment.



## Free Manuals Download Website

<http://myh66.com>

<http://usermanuals.us>

<http://www.somanuals.com>

<http://www.4manuals.cc>

<http://www.manual-lib.com>

<http://www.404manual.com>

<http://www.luxmanual.com>

<http://aubethermostatmanual.com>

Golf course search by state

<http://golfingnear.com>

Email search by domain

<http://emailbydomain.com>

Auto manuals search

<http://auto.somanuals.com>

TV manuals search

<http://tv.somanuals.com>