

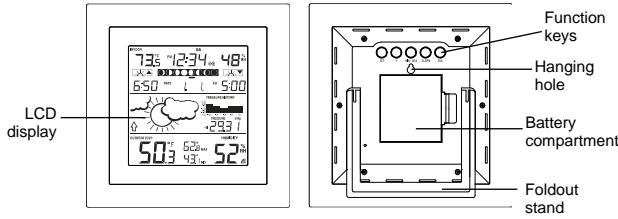
**WIRELESS 915 MHz WEATHER STATION  
WS-9257U-IT**

**Quick Setup Guide**

**INTRODUCTION**

Congratulations on purchasing this weather station with wireless 915 MHz transmission of outdoor temperature/humidity and display of indoor temperature/humidity and air pressure history. Clock function with quartz accuracy including calendar display and time alarm. In addition, weather forecast, sunrise/ sunset time as well as the moon phase are displayed. This innovative product is ideal for use in the home or office.

**The weather station**



**The outdoor thermohygro transmitter**



- Remote transmission of outdoor temperature to Weather Station by 915 MHz
- Water resistant casing
- Wall mounting case
- Mounting at a sheltered place. Avoid direct rain and sunshine

**INITIAL SET UP**

- Do Not Mix Old and New Batteries
  - Do Not Mix Alkaline, Standard, or Rechargeable Batteries
1. Insert the batteries into the thermohygro transmitter. Keep the transmitter 5-10 feet from the Weather Station during set up.
  2. Within 45 seconds, insert batteries into the Weather Station. Once the batteries are in place all segments will light up briefly. The time will be displayed as 12:00. If this is not displayed within 80 seconds, remove the batteries from both units for 2 minutes and start again from step 1.
  3. The weather station will start receiving data from the transmitter. The outdoor temperature and signal reception icon will be displayed. If this is not displayed within 80 seconds, remove the batteries from both units for 2 minutes and start again from step 1.
  4. Allow the weather station and the transmitter to remain 5-10 feet apart for 15 minutes after set up to establish a strong connection.
  5. To ensure sufficient 915 MHz transmission after set up, the distance between the transmitter mounted outside and the weather station inside should not exceed 330 feet (100 meters) distance (open air, no obstructions).
  6. Test the weather station and the transmitter in the positions they will be located for one hour before permanently mounting. If the outdoor temperature signal goes to dashes restart from step 1 and try a new location.

**INSTALL AND REPLACE BATTERIES IN THE TEMPERATURE TRANSMITTER**

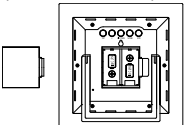
The outdoor temperature transmitter uses 2 x AAA, IEC LR3, 1.5V batteries. To install and replace the batteries, please follow the steps below:



1. Remove the cover.
2. Insert batteries, observing the correct polarity (see marking).
3. Replace the battery cover on the unit.

**INSTALL AND REPLACE BATTERIES IN THE WEATHER STATION**

The weather station uses 2 x C, IEC LR14, 1.5V batteries. To install and replace the batteries, please follow the steps below:



1. Remove the cover at the back of the weather station.
2. Insert batteries, observing the correct polarity (see marking).
3. Replace the compartment cover.

**MANUAL SETTINGS**

Press and hold the SET key for 5 seconds to enter the manual setting mode.  
**CONTRAST:** LCD and a number will flash. Press and release the + key or MIN/MAX key to adjust the contrast. Press and release the SET key to continue to the next item.  
**DST:** dSt and ON or OFF will flash. Press and release the + key or MIN/MAX key to adjust Daylight Saving Time on or off. Press and release the SET key to continue to the next item.  
**HOUR:** The Hour will flash. Press and release the + key or MIN/MAX key to adjust the hour. Press and release the SET key to continue to the next item.  
**MINUTES:** LCD and a number will flash. Press and release the + key or MIN/MAX key to adjust the minutes. Press and release the SET key to continue to the next item.  
**YEAR:** The will flash. Press and release the + key or MIN/MAX key to adjust the year (the year will only show in the program menu). Press and release the SET key to continue to the next item.  
**MONTH:** The Month will flash. Press and release the + key or MIN/MAX key to adjust the month. Press and release the SET key to continue to the next item.  
**DATE:** The Date will flash. Press and release the + key or MIN/MAX key to adjust the date (day of the week will set itself). Press and release the SET key to confirm and continue to the next item.  
**RELATIVE PRESSURE:** The relative pressure number will flash. Press and release the + key or MIN/MAX key to adjust the relative pressure. Press and release the SET key to confirm and exit.

**ALARM SET:**

- The alarm time can be set when pressing the ALARM key:
- Hold the ALARM key until the alarm hour digits flash.
  - Use the + key to set the alarm hour.

- Press the ALARM key again so the minute digits flash.
- Use the + key to set the alarm minutes.
- Confirm with the ALARM key, to exit the Alarm setting.

**NOTE:** The maximum alarm ring duration is 2 minutes.

**ACTIVATE/DEACTIVATE ALARM:**

Press and release the ALARM key to activate or deactivate the alarm. The alarm icon ((••)) will show on the LCD if the alarm is activate.

**VIEW AND RESET THE MIN/MAX READINGS:**

**VIEW:** To toggle between the MIN/MAX data for indoor temperature and outdoor temperature press and release the MIN/MAX key.

- Once to show the MAX indoor temperature data.
- Twice to show the MIN indoor temperature data.
- Three times to show the MAX outdoor temperature data with the recorded time and date
- Four times to show the MIN outdoor temperature data with the recorded time and date
- A five times to return to normal display with current data.

**RESET:** Hold the MIN/MAX button for 5 seconds to reset both indoor and outdoor min/max data.

**LOW BATTERY INDICATORS**

Low battery indicator will show on the LCD when the batteries of weather station or transmitter require changing.

**THE MOON PHASE ICONS**

The weather station displays 8 different moon phase icons. The current moon phase is indicated with a bar segment according to the set calendar.



A bar segment indicates the current moon phase

Waxing Crescent    First Quarter    Waxing Gibbous    Full Moon    Waning Gibbous    Last Quarter    Waning Crescent    New Moon

**DISPLAY MODES:**

Between the sunrise and sunset time below the moon phase, press and release the SUN button to toggle between the displays of:

- Hours of sunlight
- Location
- Month, Date
- Seconds

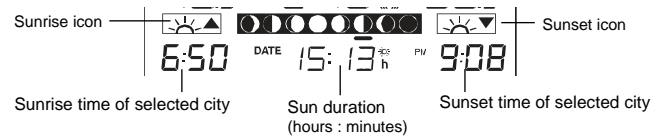
Pressure number display: Press and release the SET button to switch from Relative Pressure (rel) to Absolute Pressure reading (abs).

**SUNRISE/SUNSET LOCATIONS**

Press and hold the SUN key for 5 seconds to enter the location for sunrise/sunset times. Please use the location most directly in a North/South direction of your location if your location is not listed. Location list is at the end of this guide.

**Select a country, state and city:**

1. Once "USA" or "CAN" is selected, press the SUN key to enter the state setting.
2. The state code (2 letters abbr.) will flash. Press the + key or the MIN/MAX key to select the state.
3. After the state has been selected, press the SUN key to enter the city setting.
4. The 3 letters city abbr. will flash. Use the + key or MIN/MAX key to select the city.
5. Confirm with the SUN key. The city's sunrise, sun duration and sunset time will display in a few seconds.



Sunrise time of selected city      Sun duration (hours : minutes)      Sunset time of selected city

**WEATHER FORECASTING ICONS**

Weather icons display in any of the following combinations:



For every sudden or significant change in the air pressure, the weather icons will update accordingly to represent the change in weather. The icons displayed forecasts the weather in terms of getting better or worse and not necessarily sunny or rainy as each icon indicates. For example, if the current weather is cloudy and the rainy icon is displayed, it does not mean that the product is faulty because it is not raining. It simply means that the air pressure has dropped and the weather is expected to get worse but not necessarily rainy.

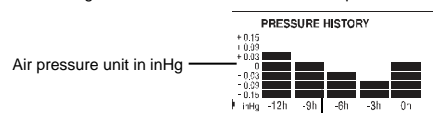
**Note:** After set up, readings for weather forecasts should be disregarded for the next 48 hours. This will allow sufficient time for the Weather station to collect air pressure data at a constant altitude and therefore result in a more accurate forecast.

**WEATHER TENDENCY INDICATOR**

Working together with the weather icons is the weather tendency indicator (located on the left of the weather icons). When the arrow points upwards, it means that the air pressure is increasing and the weather is expected to improve, but when arrow points downwards, the air pressure is dropping and the weather is expected to become worse.

**AIR PRESSURE HISTORY**

The bottom right section of the LCD shows the air pressure history bar graph.



Air pressure trend over the last 12 hours

The bar graph indicates the air pressure history trend over the last 12 hours in 5 intervals: 0h, -3h, -6h, -9h and -12h. The "0h" represents the current full hour air pressure recording. If the bars are rising it means that the weather is getting better due to the increase of air pressure. If the bars go down, it means the air pressure has dropped and the weather is expected to get worse from the present time "0h".

The air pressure is displayed numerically in relative or absolute values.

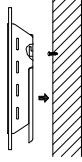
- Press and release the SET button to switch from relative (rel) to absolute (abs).

## POSITIONING

### WEATHER STATION:

#### Table stand:

The weather station comes complete with a foldout stand that gives the option of table standing or wall mounting.



#### To wall mount:

1. Fix a screw into the desired wall, leaving the head extended out by about 0.2" (5mm).
2. Using the weather station hanging hole, carefully hang it onto the screw.

**Note:** Always ensure that the unit locks onto the screw head before releasing.

### POSITIONING THE THERMOHYGRO TRANSMITTER:



#### To wall mount:

1. Secure the bracket onto a desired wall using the screws and plastic anchors.
2. Clip the transmitter onto the bracket.

**Note:** Before permanently fixing the transmitter wall base, place all units in the desired locations to check that the outdoor temperature reading is receivable. In event that the signal is not received, relocate the units or move them slightly as this may help the signal reception.

Place the sensor outside protected from direct sun and standing rain or snow. Under and eave or deck rail on the north side work well.

**Note:** The reception distance of the thermo-hygro transmitter may be affected by the temperature. At cold temperatures the transmitting distance may be decreased. Please bear this in mind when placing the transmitter.

### BATTERY CHANGE



Replace the batteries in all units regularly to ensure optimum accuracy of these units.

- Do Not Mix Old and New Batteries
- Do Not Mix Alkaline, Standard, or Rechargeable Batteries

Please participate in the preservation of the environment. Return used batteries to an authorized depot.

### SPECIFICATIONS

#### Indoor temperature

Range: 14.1°F to +139.8°F ("OF.L" displayed if outside this range)  
 Resolution: 0.2°F  
 Accuracy: +/- 2°F typically (between +32 and +122°F)  
 +/- 5°F typically (less than +32°F or higher than +122°F)

#### Indoor humidity

Range: 20%RH to 95%RH  
 (Display "-" if temperature is OL.F; display "19%" if < 20% and "96%" if > 95%)

Resolution: 1%

Accuracy: +/- 5%RH typically (between 35 – 80%RH)  
 +/- 7%RH typically (less than 35%RH or higher than 80%RH)

#### Outdoor temperature

Range: -39.8°F to +139.8°F ("OF.L" displayed if outside this range)  
 Resolution: 0.2°F  
 Accuracy: +/- 2°F typically (between +32 and +122°F)  
 +/- 5°F typically (less than +32°F or higher than +122°F)

#### Outdoor humidity

Range: 1%RH to 99%RH  
 (Display "-" if outside temperature is OF.L; display 1% if < 1% and 99% if > 99%)

Resolution: 1%

Accuracy: +/- 3%RH typically (between 20 – 80%RH)  
 +/- 5%RH typically (less than 20%RH or higher than 80%RH)

#### Air pressure

Absolute pressure range: 8.86 – 32.48 inHg  
 Resolution: 0.01 inHg  
 Accuracy: +/- 0.15 inHg typically (between 26.58 – 32.48 inHg at +50 - +86°F)  
 +/- 0.24 inHg typically (between 26.58 – 32.48 inHg at +32 - +50°F, +86 - +122°F)

#### Data checking intervals:

Indoor checking interval :every 16 seconds  
 Outdoor reception :every 4 seconds  
 Air pressure checking interval :every 1 minute  
 Transmission range :up to 330 feet / 100 meters (open space)

#### Power consumption (Alkaline batteries recommended):

Weather station :2 x C, IEC LR14, 1.5V  
 Battery life cycle :Approx. 24 months  
 Temperature transmitter :2 x AAA, IEC, LR3, 1.5V  
 Battery life cycle :Approx. 12 months

#### Dimensions (L x W x H)

Weather station :7.4" x 1.32" x 7.4" / 188 x 33.7 x 188 mm  
 Temperature transmitter :1.41" x 0.62" x 4.03" / 36 x 16 x 102.6 mm

### WARRANTY INFORMATION

La Crosse Technology, Ltd provides a 1-year limited warranty on this product against manufacturing defects in materials and workmanship.

This limited warranty begins on the original date of purchase, is valid only on products purchased and used in North America and only to the original purchaser of this product. To receive warranty service, the purchaser must contact La Crosse Technology, Ltd for problem determination and service procedures. Warranty service can only be performed by a La Crosse Technology, Ltd authorized service center. The original dated bill of sale must be presented upon request as proof of purchase to La Crosse Technology, Ltd or La Crosse Technology, Ltd's authorized service center.

La Crosse Technology, Ltd will repair or replace this product, at our option and at no charge as stipulated herein, with new or reconditioned parts or products if found to be defective during the limited warranty period specified above. All replaced parts and products become the property of La Crosse Technology, Ltd and must be returned to La Crosse Technology, Ltd.

Replacement parts and products assume the remaining original warranty, or ninety (90) days, whichever is longer. La Crosse Technology, Ltd will pay all expenses for labor and materials for all repairs covered by this warranty. If necessary repairs are not covered by this warranty, or if a product is examined which is not in need or repair, you will be charged for the repairs or examination.

The owner must pay any shipping charges incurred in getting your La Crosse Technology, Ltd product to a La Crosse Technology, Ltd authorized service center.

Your La Crosse Technology, Ltd warranty covers all defects in material and workmanship with the following specified exceptions: (1) damage caused by accident, unreasonable use or neglect (including the lack of reasonable and necessary maintenance); (2) damage occurring during shipment (claims must be presented to the carrier); (3) damage to, or deterioration of, any accessory or decorative surface; (4) damage resulting from failure to follow instructions contained in your owner's manual; (5) damage resulting from the performance of repairs or alterations by someone other than an authorized La Crosse Technology, Ltd authorized service center; (6) units used for other than home use (7) applications and uses that this product was not intended or (8) the products inability to receive a signal due to any source of interference. This warranty covers only actual defects within the product itself, and does not cover the cost of installation or removal from a fixed installation, normal set-up or adjustments, claims based on misrepresentation by the seller or performance variations resulting from installation-related circumstances.

LA CROSSE TECHNOLOGY, LTD WILL NOT ASSUME LIABILITY FOR INCIDENTAL, CONSEQUENTIAL, PUNITIVE, OR OTHER SIMILAR DAMAGES ASSOCIATED WITH THE OPERATION OR MALFUNCTION OF THIS PRODUCT. THIS PRODUCT IS NOT TO BE USED FOR MEDICAL PURPOSES OR FOR PUBLIC INFORMATION. THIS PRODUCT IS NOT A TOY. KEEP OUT OF CHILDREN'S REACH.

This warranty gives you specific legal rights. You may also have other rights specific to your State. Some States do not allow the exclusion of consequential or incidental damages therefore the above exclusion of limitation may not apply to you.

Contact info for warranty or technical support

**Contact Support: 1-608-782-1610:**

#### Product Info and Support:

[www.lacrossetechnology.com/9257](http://www.lacrossetechnology.com/9257)



#### La Crosse Technology

2817 Losey Blvd. S.  
 La Crosse, WI 54601

#### Product Registration:

[www.lacrossetechnology.com/support/register](http://www.lacrossetechnology.com/support/register)



All rights reserved. This handbook must not be reproduced in any form, even in excerpts, or duplicated or processed using electronic, mechanical or chemical procedures without written permission of the publisher.

This handbook may contain mistakes and printing errors. The information in this handbook is regularly checked and corrections made in the next issue. We accept no liability for technical mistakes or printing errors, or their consequences.

All trademarks and patents are acknowledged.

### FCC DISCLAIMER

#### RF Exposure mobile:

The internal / external antennas used for this mobile transmitter must provide a separation distance of at least 20 cm (8 inches) from all persons and must not be co-located or operating in conjunction with any other antenna or transmitter."

#### Statement according to FCC part 15.19:

This device complies with Part 15 of the FCC Rules. Operation is subject to the following two conditions: (1) this device may not cause harmful interference, and (2) this device must accept any interference received, including interference that may cause undesired operation.

#### Statement according to FCC part 15.21:

Modifications not expressly approved by this company could void the user's authority to operate the equipment.

#### Statement according to FCC part 15.105:

NOTE: This equipment has been tested and found to comply with the limits for a Class B digital device, pursuant to Part 15 of the FCC Rules. These limits are designed to provide reasonable protection against harmful interference in a residential installation. This equipment generates, uses and can radiate radio frequency energy and, if not installed and used in accordance with the instructions, may cause harmful interference to radio communications.

However, there is no guarantee that interference will not occur in a particular installation. If this equipment does cause harmful interference to radio or television reception, which can be determined by turning the equipment off and on, the user is encouraged to try to correct the interference by one or more of the following measures:

- Reorient or relocate the receiving antenna.
- Increase the separation between the equipment and receiver.
- Connect the equipment into an outlet on a circuit different from that to which the receiver is connected.
- Consult the dealer or an experienced radio/TV technician for help.

**LIST OF COUNTRIES / STATES / CITY CODES**

|                                       |
|---------------------------------------|
| <b>USA = UNITED STATES OF AMERICA</b> |
| <b>ALABAMA (AL)</b>                   |
| MONTGOMERY = MGM                      |
| MOBILE = MOB                          |
| <b>ARKANSAS (AR)</b>                  |
| LITTLE ROCK = LIT                     |
| <b>ARIZONA (AZ)</b>                   |
| PHOENIX = PHX                         |
| <b>CALIFORNIA (CA)</b>                |
| FRESNO = FAT                          |
| LOS ANGELES = LAX                     |
| REDDING = ROD                         |
| SAN DIEGO = SAN                       |
| SAN FRANCISCO = SFO                   |
| <b>COLORADO (CO)</b>                  |
| DENVER = DEN                          |
| DURANGO = DRO                         |
| GRAND JUNCTION = GJT                  |
| PUEBLO = PUB                          |
| <b>DISTRIC OF COLUMBIA (DC)</b>       |
| WASHINGTON = DCA                      |
| <b>FLORIDA (FL)</b>                   |
| JACKSONVILLE = JAX                    |
| MIAMI = MIA                           |
| ORLANDO = ORL                         |
| TALLAHASSEE = TLH                     |
| TAMPA = TPA                           |
| <b>GEORGIA (GA)</b>                   |
| ATLANTA = ATL                         |
| <b>HAWAII (HI)</b>                    |
| HONOLULU = HNL                        |
| <b>IOWA (IA)</b>                      |
| DES MOINES = DSM                      |
| DAVENPORT = DVN                       |
| <b>IDAHO (ID)</b>                     |
| BOISE = BOI                           |
| <b>ILLINOIS (IL)</b>                  |
| CHICAGO = ORD                         |
| SPRINGFIELD = SPI                     |
| <b>INDIANA (IN)</b>                   |
| EVANSVILLE = EVV                      |
| INDIANAPOLIS = IND                    |
| <b>KANSAS (KS)</b>                    |
| DODGE CITY = DDC                      |
| WICHITA = K32                         |
| TOPEKA = TOP                          |
| <b>KENTUCKY (KY)</b>                  |
| LEXINGTON = LEX                       |
| <b>LOUISIANA (LA)</b>                 |
| NEW ORLEANS = NEW                     |
| SHREVEPORT = SHV                      |
| <b>MASSACHUSETTS (MA)</b>             |
| BOSTON = BOS                          |
| <b>MAINE (ME)</b>                     |
| AUGUSTA = AUG                         |
| CARIBOU = CAR                         |
| <b>MICHIGAN (MI)</b>                  |
| DETROIT = DET                         |
| ROGERS CITY = PZQ                     |
| <b>MINNESOTA (MN)</b>                 |
| DULUTH = DLH                          |
| INTERNATIONAL FALLS = INF             |
| <b>MISSOURI (MO)</b>                  |
| JEFFERSON CITY = JEF                  |
| <b>MISSISSIPI (MS)</b>                |
| JACKSON = JAN                         |
| <b>MONTANA (MT)</b>                   |
| BILLINGS= BIL                         |
| HELENA = HLN                          |
| <b>NORTH CAROLINA (NC)</b>            |
| CHARLOTTE = CLT                       |
| RALEIGH = RDU                         |
| <b>NORTH DAKOTO (ND)</b>              |
| BISMARCH = BIS                        |
| FARGO = FAR                           |
| <b>NEBRASKA (NE)</b>                  |
| LINCOLN = LNK                         |
| SIDNEY = SNY                          |

|                            |
|----------------------------|
| <b>NEW HAMPSHIRE (NH)</b>  |
| CONCORD = CON              |
| <b>NEW JERSEY (NJ)</b>     |
| TRENTON = TTN              |
| <b>NEW MEXIXO (NM)</b>     |
| ALBUQUERQUE = ABQ          |
| <b>NEVADA (NV)</b>         |
| LAS VEGAS = LAS            |
| RENO = RNO                 |
| <b>NEW YORK (NY)</b>       |
| BUFFALO = BUF              |
| NEW YORK CITY = JFK        |
| SYRACUSE = SYR             |
| <b>OHIO (OH)</b>           |
| CLEVELAND = CLE            |
| COLUMBUS = CMH             |
| <b>OKLAHOMA (OK)</b>       |
| OKLAHOMA CITY = OKC        |
| TULSA = TUL                |
| <b>OREGON (OR)</b>         |
| MEDFORD = MFR              |
| PORTLAND = PDX             |
| <b>PENNSYLVANIA (PA)</b>   |
| HARRISBURG = CXY           |
| PITTSBURGH = PIT           |
| SCRANTON = SCR             |
| <b>SOUTH CAROLINA (SC)</b> |
| CHARLSTON = CHS            |
| COLUMBIA = CUB             |
| <b>SOUTH DAKOTA (SD)</b>   |
| SIOUX FALLS = FSD          |
| RAPID CITY = RAP           |
| <b>TENNESSEE (TN)</b>      |
| NASHVILLE = BNA            |
| KNOXVILLE = DKX            |
| MEMPHIS = MEM              |
| <b>TEXAS (TX)</b>          |
| AMARILLO = AMA             |
| AUSTIN = AUS               |
| BROWNSVILLE = BRO          |
| DALLAS / FT. WORTH = DFW   |
| EL PASO = ELP              |
| HOUSTON = HOU              |
| ODESSA = ODO               |
| SAN ANTONIO = SAT          |
| <b>UTAH (UT)</b>           |
| SALT LAKE CITY = SLC       |
| <b>VIRGINIA (VA)</b>       |
| LYNCHBURG = LYH            |
| NORFOLK = ORF              |
| <b>VERMONT (VT)</b>        |
| BURLINGTON = BTV           |
| <b>WASHINGTON (WA)</b>     |
| SEATTLE = SEA              |
| SPOKANE = SFF              |
| <b>WISCONSIN (WI)</b>      |
| GREEN BAY = GRB            |
| LA CROSSE = LSE            |
| <b>WEST VIRGINIA (WV)</b>  |
| CHARLESTON = CRW           |
| <b>WYOMING (WY)</b>        |
| CASPER = CPR               |

|                    |
|--------------------|
| <b>CA = CANADA</b> |
| CALGARY = ALB      |
| OTTAWA = OTT       |
| QUEBEC = QUE       |
| TORONTO = TOR      |
| VANCOUVER = VAN    |
| WINNEPEG = WIN     |

## Free Manuals Download Website

<http://myh66.com>

<http://usermanuals.us>

<http://www.somanuals.com>

<http://www.4manuals.cc>

<http://www.manual-lib.com>

<http://www.404manual.com>

<http://www.luxmanual.com>

<http://aubethermostatmanual.com>

Golf course search by state

<http://golfingnear.com>

Email search by domain

<http://emailbydomain.com>

Auto manuals search

<http://auto.somanuals.com>

TV manuals search

<http://tv.somanuals.com>