

## HIGH RESOLUTION, DAY/NIGHT, INTERNET REMOTE VIEWING VIDEO SURVEILLANCE SYSTEM



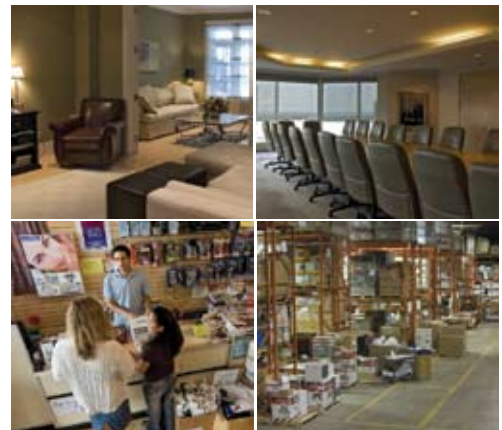
### A versatile Surveillance Solution

- **SEE everything:** Connect the included 4 high-resolution weatherproof night-vision cameras. Monitor your property, indoors and outdoors, day or night
- **RECORD what happens:** High-capacity, security-certified hard drive provides a reliable solution for your critical data. Extend recording duration with flexible recording triggered by motion, alarm or schedules. Triplex operation allows you to view, record and playback simultaneously.
- **PROTECT what matters:** Connect anytime, from anywhere in the world using the internet remote monitoring software to view or playback video that is important to you.

Safeguard your business or home. Includes DVR, Cameras, Cables, Remote Access Software and Quick Start Guide. It's complete!

HOME

BUSINESS



RETAIL

INDUSTRY



L204 Series

COMPONENT SURVEILLANCE SYSTEM

[www.lorexcctv.com](http://www.lorexcctv.com)

# HIGH RESOLUTION, DAY/NIGHT, INTERNET REMOTE VIEWING VIDEO SURVEILLANCE SYSTEM

## • Digital Video Recorder:

- Triplex (view, record & playback simultaneously) Digital Video Recorder with 1 channel audio
- Large storage capacity recording (Supports 2 internal "security certified" disk drives up to 1TB total)\*
- USB port for convenient transferring of critical data to USB flash drive
- Support an optional internal optical drive (CDRW or DVDRW sold separately)
- Pan-tilt-zoom camera control, RS485 interface (PTZ camera not included)
- Multiple recording modes (continuous, motion, alarm sensor, schedule)
- Adjustable frame rate for each channel (optimize recording characteristics)
- Mouse enabled menu system for easy set up and configuration (mouse sold separately)
- MJPEG video compression enables high resolution video recording
- Alarm input-4/output-1 (connect to existing intruder alarm or alarm panel)

## • Cameras:

- Advanced high resolution image sensor produces sharp and clear video with 450 TV Lines
- 30 IR LEDs provides class leading night vision range of 50ft (15m)\*\*
- True Day/Night operation using built-in IR Filter Changeable Mechanism to achieve accurate color representation in changing lighting conditions
- Advanced Day/Night mode: picture automatically switches to B&W delivering better clarity in low light conditions
- Weatherproof Design: ideal for Outdoor and Indoor applications (IP66\*\*\*)

## • Software:

- Internet Remote Functions\*\*\*\*: View, Search & Playback, Back-up and Setup
- Microsoft Windows Vista™ Compatible
- Free Lorex DDNS (Dynamic Domain Name System) service keeps you connected anywhere all the time

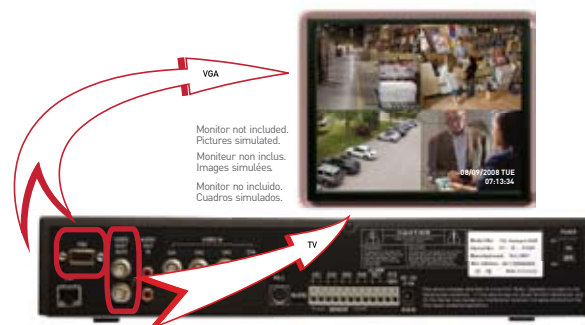
\* Recording capacity may vary based on recording resolution & quality, lighting conditions and movement in the scene.  
\*\* IR illumination range up to 50 ft (15M) under ideal conditions. Objects at or beyond this range may be partially or completely obscured, depending on the camera application.  
\*\*\* Not for use in direct exposure to water, rain or snow.  
\*\*\*\* Requires a high speed internet connection and router - not included.

Microsoft Windows™ XP™, Vista™ are trademarks of Microsoft Corporation.

Other trademarks are the property of Lorex Technology Inc. We reserve the right to change models, configurations or specifications without notice or liability. Product may not be exactly as shown.



## VGA OUTPUT - CONNECTS TO ANY PC MONITOR



## EASY TO USE REMOTE SOFTWARE



L204 Series

COMPONENT SURVEILLANCE SYSTEM

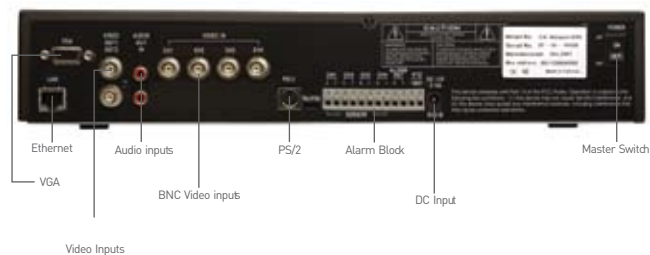


# Specifications:

## DVR:

	L204 SERIES
Operating system	Realtime (RTOS)
Video Input	4 Channel (BNC)
Video Output	2 Channel [2-composite/1-VGA]
Video Input Standard	NTSC / PAL
Display Resolution	720 x 480 Pixels / 720 * 576 Pixels (NTSC/PAL)
Recording Resolution	640 * 224 Pixels / 640 * 272 Pixels (NTSC/PAL)
Display	120 fps / 100 fps real time (NTSC/PAL)
Recording	60 fps / 50 fps (15fps/12.5) per channel (NTSC/PAL)
Display Mode	SINGLE/QUAD
Recording Compression	Motion JPEG
Network Compression	MPEG4
Image Size	Low 12 kbytes/frame (Each Channel) Normal 15 kbytes/frame High 20 kbytes/frame
Recording Mode	Continuous/Motion/ Schedule/sensor
HDD Capacity	HDD * 2 (Max 500GB ea = 1TB)
Motion detection	ON / OFF Control
Audio Input	1 Ch.
LAN	Yes (DHCP, Static IP, PPPoE)
PTZ	Yes (RS485)
Sensor / Alarm	4 Ch Input / 1Ch Output
CD-RW/DVD-RW	No (optional)
VGA	Yes (1024x768)
Mouse support	Yes (PS/2) optional
Camera Control	Color, Tint, Brightness
USB backup and firmware upgrade	Yes (USB 2.0)

## Back Panel:

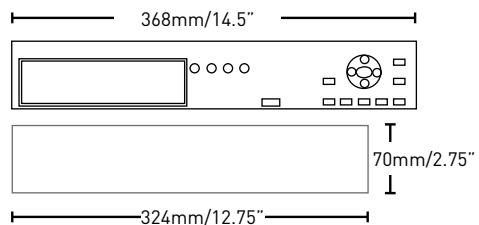


## CAMERA: (CVC6993R)

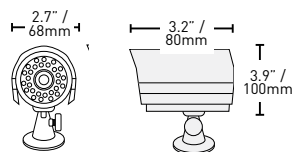
Image Sensor:	High Resolution 1/4" Advanced Color Image Sensor
Video Format:	NTSC
Effective Pixels:	H: 656, V: 492
Resolution:	450 TV Line
Scan System:	2:1 Interlace
Sync System:	Internal
S/N Ratio:	More than 48dB
Iris:	AES
AES Shutter Speed:	1/60~1/50,000 Sec
Min Illumination:	0.6 Lux without IR LED, 0 Lux with IR LED
Video Output:	Composite 1.0Vpp @ 75 ohm
Lens/ Lens Mount:	5mm F 2.0/ Fixed
FOV (Diagonal):	50 degree
Termination:	BNC
IR LED/ Night Vision Range:	30 pieces / 850 nm / 50ft
Power Requirement:	12Vdc
Power Consumption:	220 mA or 3W max
Operating Temp Range:	-10° ~ 50° C
Environmental Rating:	IP 66

## Dimensions:

### DVR



### CAMERA



## Product Information:

<b>Model#:</b>	L204251C4F: NTSC, Universal Package
<b>UPC:</b>	L204251C4F: 7-78597-20403-2
<b>Weight:</b>	9.3 kg / 20.6 lb
<b>Package Dimensions:</b>	16.75 x 10.5 x 16.25 (")/ 425x279x419 (mm) (W x H x D)
<b>Includes:</b>	DVR, HDD Pre-Installed, Remote Control, Power Supply, 4 Cameras & stands, 4 camera extension cables, 10 ft. Ethernet cable, Software application CD, Quick Start Guide

## Lorex Technology Inc.

300 Alden Road, Markham,  
Ontario L3R 4C1  
Canada.

3700 Koppers Street  
Baltimore, Maryland 21227,  
USA.

©2008 Lorex Technology Inc.

As our product is subject to continuous improvement, Lorex Technology & subsidiaries reserve the right to modify product design, specifications & prices without notice and without incurring any obligation. E&OE

1-03112008

## Free Manuals Download Website

<http://myh66.com>

<http://usermanuals.us>

<http://www.somanuals.com>

<http://www.4manuals.cc>

<http://www.manual-lib.com>

<http://www.404manual.com>

<http://www.luxmanual.com>

<http://aubethermostatmanual.com>

Golf course search by state

<http://golfingnear.com>

Email search by domain

<http://emailbydomain.com>

Auto manuals search

<http://auto.somanuals.com>

TV manuals search

<http://tv.somanuals.com>