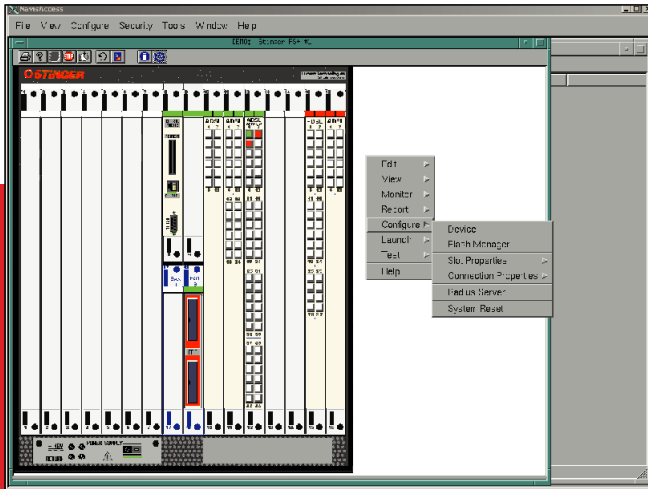


NavisAccess™ DSL Element Management System



The advanced *NavisAccess™* DSL EMS graphical user interface (GUI) provides service level views of your Lucent Stinger® DSLAMs, enabling you to centrally monitor and manage the performance of each DSL line in the network.

NavisAccess™ DSL Element Management System (EMS) software accelerates configuration and deployment for Digital Subscriber Line (DSL) access and services supporting your Lucent Stinger® family of DSLAM products. *NavisAccess™* DSL EMS software simplifies day-to-day operations for DSL access services over Stinger® DSLAM products in your network and provides the foundation for your Fault, Configuration, Accounting, Performance and Security (FCAPS) functionalities. Scalable to more than 500,000 Stinger® device ports, *NavisAccess™* DSL EMS software enables you to monitor the performance of every DSL line in your entire network.

NavisAccess™ DSL EMS is a key component of Lucent's powerful *Navis®* iOperations EMS portfolio of products that simplify deployment, configuration and management of Lucent network equipment. *Navis®* EMS solutions help you make the most of your Lucent network investments, streamline daily operations and offer revenue-enhancing services.

Features

- **Integrated and automated network start-up** – Includes auto-discovery of network devices, flexible network views and subscriber provisioning
- **Advanced real-time performance and fault monitoring** – Centralizes remote management of devices, services and device/service groups, including chassis, software and configuration file change control
- **Comprehensive visualization tools**
 - Enhances secure access to *NavisAccess™* DSL EMS features, functions and data through user groups you specify
 - Helps you better manage your network via reports based on historical usage performance trends and capacity needs
- **Scalability for network growth management**
 - Supports more than 500,000 ports on a single, logical system and scales to meet the needs of the largest access providers
 - Ensures that your future network growth is accommodated by an existing flexible management system

Benefits

- **Speeds network start-up time** – Deploys rapidly so you can configure, provision and manage DSL devices and services immediately
- **Reduces time to resolve network problems** - Facilitates quick identification and resolution of fault conditions via advanced fault management capabilities
- **Enhances fault and device management** – Provides abilities to detect and recover lost traps while maintaining connections to the monitored Stinger® DSLAM
- **Increases end-user satisfaction**
 - Speeds and facilitates service provisioning process with a simple, easy to use GUI-based DSL port provisioning feature
 - Enables you to store frequently used port configurations in templates for quick, accurate provisioning

Lucent Technologies
Bell Labs Innovations



NavisAccess™ DSL EMS Software Operations and Specifications

On-screen Displays

- Threshold monitoring – monitors individual lines for threshold crossing, including parameters affecting line quality
- Fault monitoring – provides screen-based view of every aspect of your Stinger® DSL network
- Inventory management and spares planning – easy-to-use screens and tools provide virtual views of each Stinger® DSLAM device on the network

Reporting

- Versatile reporting – customized reporting available to monitor device status, device chassis, DSL resources and events
- Multi-level security for network-wide control – ability to segregate security program based on network elements and create multiple level security controls to restrict access based on different feature combinations

Enhanced Device Management

- Monitors the state of network element (NE) connections
- In case of loss of management connection, notifies local operator and sends a trap to a higher order OSS
- After communication link is restored, recovers traps that were generated on the NE during the period of outage and forwards recovered traps to higher order OSS

Event and Fault Management

- SNMP Trap forwarding to higher order OSS
- Optional integration with Navis® Network Fault Management (NFM) software
- Hierarchical network map - Indication of highest severity alarms on network map
- User acknowledged/cleared alarms
- Auto-clearing of alarms based on user-specified notifications
- Audit trail of alarm processing
- Advanced GUI for high fault visibility

Advanced Thresholds

- Threshold monitoring parameters detect:
 - Loss of frame seconds
 - Loss of link seconds
 - Loss of power seconds
 - Loss of signal seconds
 - Errored seconds

Configuration Management

- Device configuration and software management – automates routine, error-prone tasks involved in configuring network devices and loading new versions of software across a large network
- Physical view of the Stinger® DSLAM allows:
 - Discovery of trunk and Control Module (CM) sparing configuration
 - Recognize Line Protection Module (LPM) LPM-R (redundancy supporting), LPM-RP (port level or enhanced redundancy supporting) IRM (Interface Redundancy Module) or CLT (Copper Line Test Module)
 - Standby versus Active CM indication
 - Trunk module switchover indication
 - Line-under-test indication
 - Redundant line switchover indication
 - Associated event display filtered for device being viewed
 - Initiate loop tests and view the results in minutes

Scalability

- Distributed system architecture allows for high scalability, supporting more than 500,000 DSL lines.

Service and Support

Backed by Lucent Worldwide Services for industry-leading service and support

Hardware

NavisAccess™ DSL hardware specifications vary based on number of DSLAMs to be managed, number of operators logged into NavisAccess™ servers, availability of WAN bandwidth, etc. These specifications are made available based on your specific requirements.

Release 7.3 Specifications

- True Access® Operating System 9.4-185.2, 9.3-170.3
- 48port ADSL MRT 19"
- Support for Connection Admission Control (CAC) feature
- Support for Reliable Trap delivery - to Stinger® Access Concentrator and Navis® NFM

Supported Stinger® Products

- Stinger® FS DSL Access Concentrator
- Stinger® FS+ DSL Access Concentrator
- Stinger®LS DSL Access Concentrator
- Stinger® RT DSL Access Concentrator
- Stinger® MRT DSL Access Concentrator

External Interfaces

NavisAccess[™] DSL EMS can be configured to forward SNMP traps and events to upstream systems including network management systems and operations support systems (OSS).

Demonstration Software Download

See how *NavisAccess*[™] DSL EMS can help you save time and money via a free 90-day demonstration software download is available at:
http://www.lucent.com/products/applications/navis_demo.html

Navis[®] iOperations Element Management Software

Make the most of your Lucent network investments

Navis[®] iOperations EMS solutions integrate seamlessly with existing OSS systems to support automated network provisioning, continuous synchronization of network resources and consistently high QoS. They feature a common, technology-independent framework – which eases management with a consistent look and feel across diverse domains and hardware systems.

Navis[®] iOperations is a comprehensive software portfolio of multi-vendor, multi-technology Operations Support Systems for wireline, wireless, optical, circuit and data networks. *Navis*[®] iOperations systems are developed on extensible, programmable platforms, open APIs and advanced system architecture to provide carrier class reliability and scalability, as well as rapid and affordable integration into a Service Provider's preferred operations infrastructure.

Navis[®] iOperations are supported by Lucent Worldwide Services (LWS), Systems Integrators, and Service Provider partners who provide a comprehensive suite of world-class planning, deployment, operations and maintenance services.

To learn more, contact your Lucent Technologies sales representative, authorized reseller or sales agent. You can also visit our web site at <http://www.lucent.com/oss> or call 1-888-426-2252.

This document is provided for planning purposes only, and does not create, modify or supplement any warranties which may be made by Lucent Technologies relating to the products and/or services described herein. The publication of information contained in this document does not imply freedom from patent or other protective rights of Lucent Technologies or third parties.

Navis and Stinger are registered trademarks and NavisAccess is a trademark of Lucent Technologies Inc. All other trademarks and registered trademarks are properties of their respective holders.

Copyright © 2003
Lucent Technologies Inc.
All rights reserved.

NADSL.ds.v1.08.03

Lucent Technologies
Bell Labs Innovations



Free Manuals Download Website

<http://myh66.com>

<http://usermanuals.us>

<http://www.somanuals.com>

<http://www.4manuals.cc>

<http://www.manual-lib.com>

<http://www.404manual.com>

<http://www.luxmanual.com>

<http://aubethermostatmanual.com>

Golf course search by state

<http://golfingnear.com>

Email search by domain

<http://emailbydomain.com>

Auto manuals search

<http://auto.somanuals.com>

TV manuals search

<http://tv.somanuals.com>