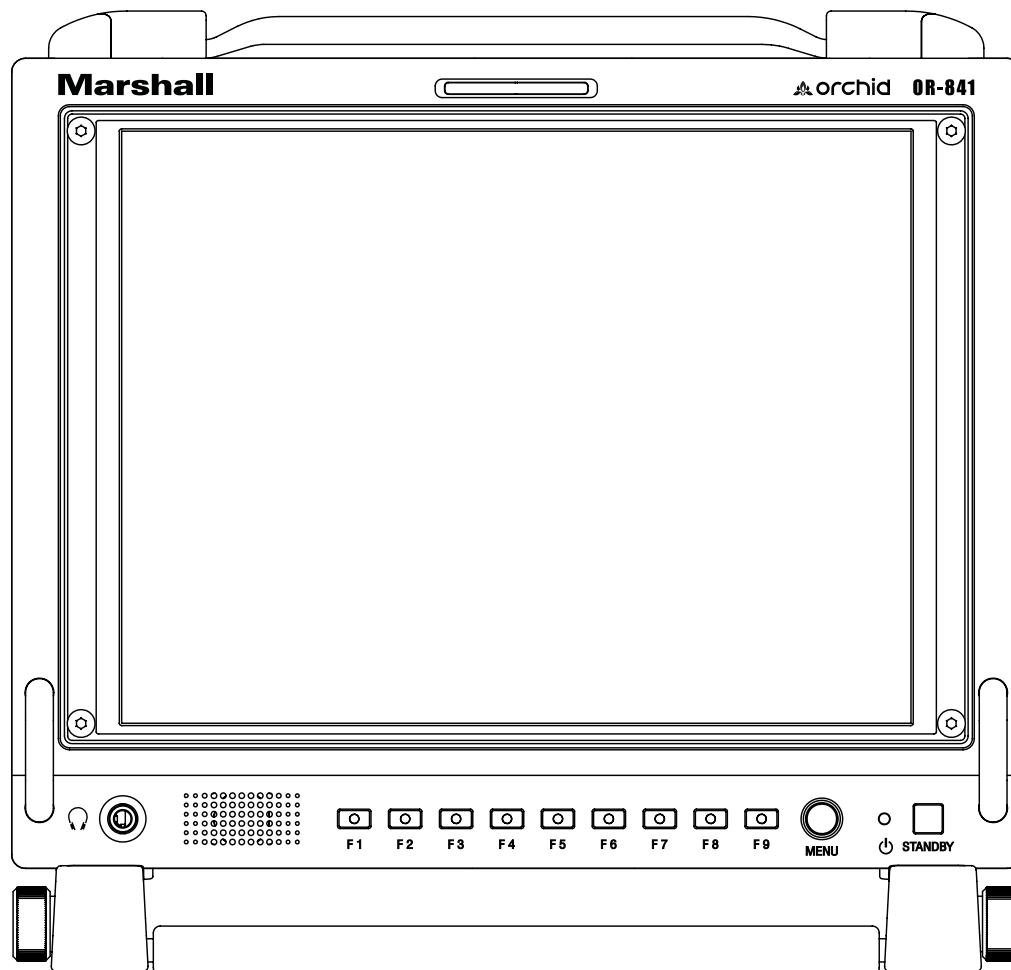


Marshall Electronics

orchid **OR-841-HDSDI**

Fully Featured 8.4" Rack Mountable / Camera-Top / Portable LCD Field Monitor



Operating Instructions

Contents

Product Overview	3
Features	3
Installation and Initial Setup	5
Unpacking	5
Mounting	5
Connections and Power-On	5
Front Panel Features	6
Power Button	6
Input Select Buttons	6
User-Definable Function Buttons	6
Image Adjustment Knobs	6
Rear Panel Features	7
Power Input	7
Compatible Input Formats	8
On-Screen Menu	9
MAIN MENU AND NAVIGATION	12
INFO SUBMENU	12
INPUT SUBMENU	12
PICTURE SUBMENU	13
COLOR SUBMENU	13
<i>Color Temperature Presets</i>	13
<i>RGB Bias and Gain</i>	13
SCREEN SUBMENU	14
<i>Scan</i>	14
<i>Aspect Ratio Setting</i>	14
<i>Mono / Color</i>	14
<i>H/V Delay</i>	14
<i>Shift H</i>	14
<i>Shift V</i>	15
MARKER CONFIGURATION SUBMENU	15
<i>Markers</i>	15
<i>Center Marker</i>	15
<i>Aspect Markers</i>	15
<i>Safety Marker</i>	15
<i>Marker Mat</i>	15
<i>Line Thickness</i>	15
<i>Line Type</i>	15
AUDIO CONFIGURATION SUBMENU	16
<i>Meter Background</i>	16
<i>Display Channels</i>	16
<i>Active Channel Only</i>	16
<i>Meter Columns</i>	16
<i>Display Type</i>	16
<i>Front Volume</i>	16
<i>Rear Volume</i>	16
<i>Headroom Start</i>	16
<i>Headroom End</i>	16
<i>Channel Assignment</i>	16
<i>Load CH Preset</i>	16
<i>Save CH Preset</i>	17
<i>CH Preset</i>	17
WAVEFORM SUBMENU	17
VECTORSCOPE SUBMENU	18
ClipGuide SUBMENU	18
USER ASSIGN SUBMENU	19
REMOTE SUBMENU	20
SETUP SUBMENU	20
Specifications	22
Maintenance / Color Calibration Procedure	23
Warranty Information	24

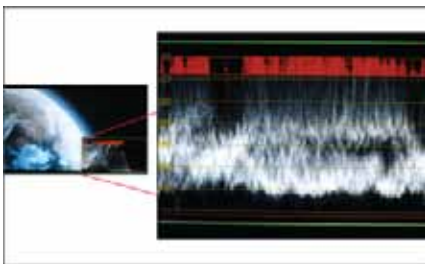
Product Overview

The Orchid **OR-841-HDSDI** is a single 8.4" fully featured camera-top and field monitor system. The OR-841-HDSDI offers built-in Waveform Monitor, Vectorscope, Audio Bars, Built In Speaker with audio outputs, and several diagnostic tools. This monitor is ideal for use as a camera top or field camera assist monitor. The OR-841-HDSDI is equipped with two HD/SD-SDI inputs with switched output. Diagnostic tools include our exclusive ClipGuide feature, 16 Tri-Color Audio Bar Graph meters with peak hold and numeric display of headroom and peak levels, and real-time analysis of color space conversion gamut errors. Other standard features include factory calibrated screen, easy-to-navigate onscreen menus with RotoMenu control, 9 assignable function keys, adjustable color temperature, aspect ratio settings, a variety of screen markers, blue-only mode, monochrome mode, H/V delay, and 7 assignable GPI inputs.

Features

High Resolution 8.4" Panel

The OR-841-HDSDI features an all-digital TFT-MegaPixel active matrix LCD system. The LCD panel features a nominal brightness of 400 cd/m² and a contrast ratio of 400:1 making each display ideal in a variety of environments and lighting conditions.



Waveform monitor function

The built-in waveform monitor (which includes adjustable White and Black clip level indicators) can be displayed in various aspect ratios, positions, and transparency options. The Waveform Monitor not only monitors luminance, but can also warn the user for out-of-range conditions such as overexposure or "blacker-than-black" errors with fully user-adjustable warning limits.



Real-time Color Vectorscope

The built-in Vectorscope allows users to monitor color gamut range in real time. It displays in full color and can also be displayed in various sizes, positions, and transparency options. The Vectorscope has adjustable gain from 1x to 5x.



ClipGuide

The ClipGuide function operates with both the Waveform display and Monochrome/Color picture display. Both the upper and lower ClipGuide levels are user-adjustable in order to accurately display over-and-under exposures during different shooting conditions. For example, the upper ClipGuide limit may be set to 85 IRE and the lower limit to 10 IRE. With these settings, any exposures over the set limit of 85 IRE will display red on both the Waveform and picture (if selected). The same will be true for blacks under 10 IRE.

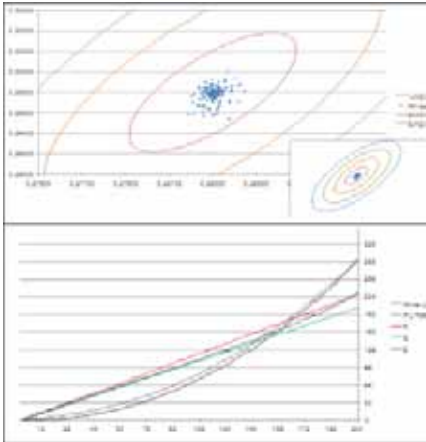
Chroma monitor function

Included in the ClipGuide menu are settings for monitoring color gamut errors, which can occur in color space conversion. Any data exceeding these values will be displayed as Yellow in the picture. The factory preset for C limits are 16 and 240 according to ITU-R BT.709. Typically, these values should not be exceeded during normal video production.



Precision Audio Level Meters

De-embeds and displays up to 16 channels of audio using sixteen 64-segment tri-color Audio Meters with user-adjustable reference levels. The Audio Level Meters provide numerical indicators and headroom levels, as well as peak hold function. Audio Channel Loss Warning prevents errors during monitoring.



Precision White Balance with Color Temperature Adjustment

White balance adjustment is essential in order to render colors correctly. To display colors correctly, gray scale should maintain identical color temperature. The white balance for ORCHID monitors defaults to D65 (6500K) so the user does not need to adjust white balance. LCD monitors have color-matching issues because white balance can be affected by a change in luminance level. Our unique color management system solves this problem.

The ORCHID operating system includes an Automatic White Balance function that allows a “One Button” calibration procedure when used with a Minolta CA-210 color probe. All Orchid Series LCD panels are calibrated at the factory to ensure color conformity between screens.

Select color temperature and gamma mode

Color temperature presets may be selected between D65 or D93 as well as user-defined settings. Gamma settings are adjustable from 1.0 to 3.0 in 0.1 steps. The standard setting is 2.2.

Flexible Screen Markers

A variety of screen markers in 4:3, 16:9, and full screen modes allow accurate monitoring of the different aspect ratios used in broadcast environments.

User-Definable Function Buttons

Nine user-definable function buttons and one Rotary Encoder on the front panel allow quick access to numerous settings and features including Input 1, Input 2, Option Input, Waveform, Vectorscope, Audio Bars, aspect ratio, screen markers, monochrome mode, H/V delay mode, and more.

AUDIO Jack

There are two 3.5mm AUDIO jacks (one on the front panel for headphones and one on rear panel to feed an external amplifier). It is possible to utilize both the front panel headphone connector and rear panel speaker connector simultaneously with individual volume controls. When not in menu mode, the rotary encoder on the front panel may control the headphone and internal speaker volume.

Installation and Initial Setup

Unpacking

Carefully unpack the OR-841-HDSDI monitor and verify that the following items are included:

- OR-841-HDSDI Monitor
- 12V 4A XLR Power Supply with 4-Pin Female XLR Connector
- Operating Instructions

Inspect the unit for any physical damage that may have occurred during shipping. Should there be any damage, immediately call Marshall Electronics Customer Service at (800) 800-6608. If you are not located within the continental United States, call +1 (310) 333-0606.

Mounting

The OR-841-HDSDI is designed as a tabletop camera assist or tri-pod/camera-top monitor. It comes complete with tabletop stand, easy-to-carry handle on top, and is equipped with both 1/4-20 and 3/8" threaded mounts on top and bottom. The included handle and stand may be removed for access to the threaded mounts.

There is an optional OR-8RK rack mount kit for mounting two OR-841-HDSDI units side by side in a standard 19" rack. When used in this configuration, the Dual OR-841-HDSDI units occupy 5 RU and have a +/- 40° Tilt.

Other optional accessories include the OR-8HO Custom Hood for daylight viewing and the OR-8HA optional side mount handle. One handle may be mounted on each side of the OR-841 for easy carrying during a wireless camera shoot.

Optional Accessories for OR-841



OR-8HA Side Handle



OR-8HO Hood



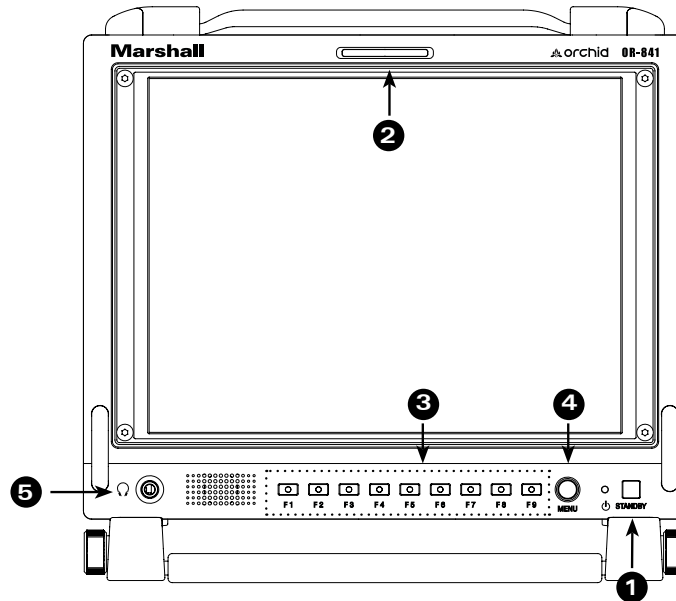
OR-8RK Rack Mount Kit (Mounts two units side-by-side)

Connections and Power-On

Plug the power supply into an AC power source (100-240 V @ 50/60 Hz). Attach the 4-pin female XLR connector to the back of the monitor. The monitor will draw no more than 4.0 Amps at 12 Volts in operation (24 Watts).

Connect the required cables for video signal input and output (Power must be applied to the OR-841-HDSDI for the active loop-through outputs to be activated). All BNC connectors are rated at 75Ω.

Front Panel Features



1 **Power Button with Indicator**

Press power switch to turn on the Unit. The indicator LED will turn Green. Press again to put the OR-841-HDSDI into standby mode. The LED will turn Red.

2 **Tri-Color Tally Light**

30mm Tri-Color tally lamp controlled via the Remote connector on the rear of the unit.

3 **User-Definable Function Keys**

Nine user-definable function buttons can be used for direct access to various settings. Functions are assigned using the on-screen menu.

4 **User-Defined Rotary Encoder**

The Rotary Encoder may be assigned to one of five functions through the User Assign menu.

The available functions are:

- Volume
- Brightness
- Contrast
- Saturation
- Sharpness

Turning the encoder will allow the user to make adjustments to the selected mode.

ROTOMENU Control

Press the ROTOMENU Encoder to access the on-screen Menu. Turn the encoder to the Left or Right to navigate Up and Down on the on-screen menu. Press the encoder to select the sub-menu. When you arrive at the sub-menu or value you wish to modify, turn the encoder to select the new value and then press the Encoder to save the change. If you exit the data entry submenu before pressing the Encoder, the changes will not be saved. You may exit sub-menus by turning the Encoder to the Return heading and pressing the Encoder to select, or simply by pressing the F9 key.

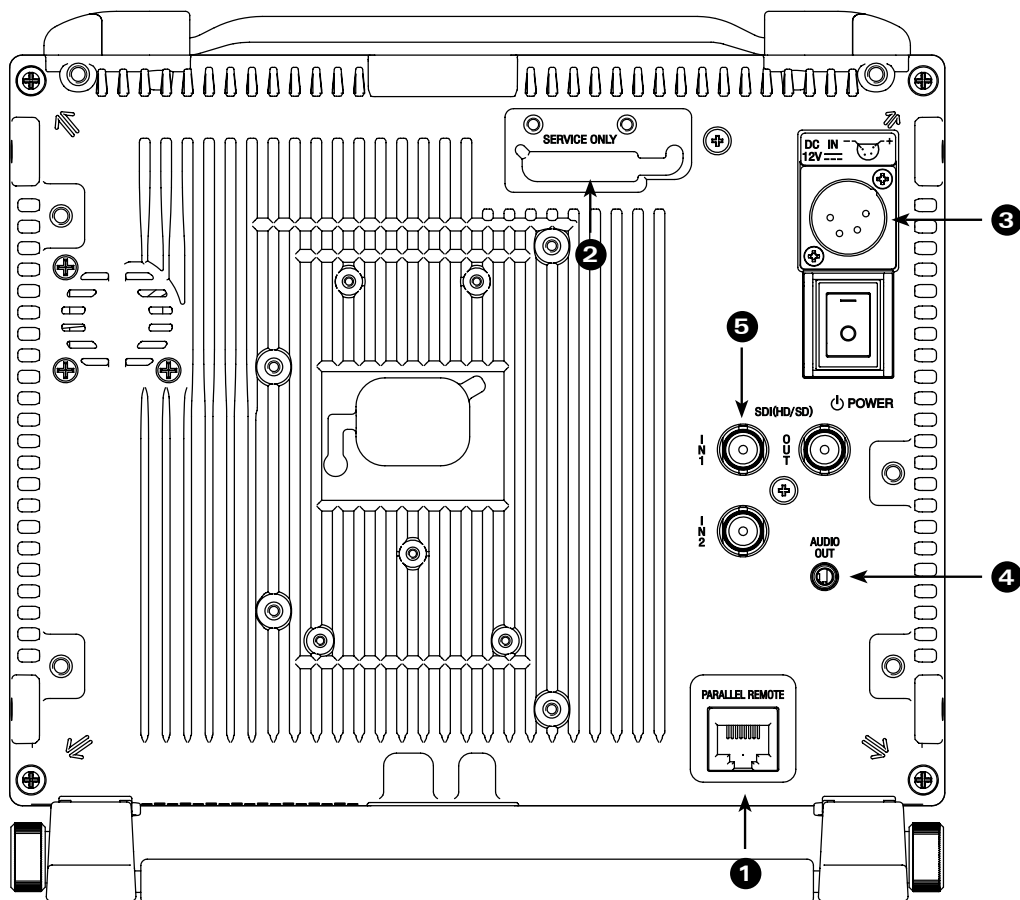
5 **Headphone Jack**

3.5mm stereo headphone jack. Left and Right source are selected from the on-screen menu.

Rear Panel Features

**Parallel Remote RJ-45
Pin Assignments**

Pin 1	GPI 1
Pin 2	GPI 2
Pin 3	GPI 3
Pin 4	GPI 4
Pin 5	GND
Pin 6	GPI 5
Pin 7	GPI 6
Pin 8	GPI 7



1 GPI Input

RJ-45 connector for 7 user-assignable GPI inputs. Assignable using the on-screen menu.

2 Service Port

Proprietary connection used for firmware upgrades and LCD color balance calibration.

3 Power Input

Connect 12VDC to the 4-Pin XLR power input connector. Power can be supplied from the included power supply or from a variety of DC sources supplying at least 1 Amp at 12 Volts.

IMPORTANT: If using a power source other than the included power supply, be sure that the polarity of the DC input is correct:

- Pin 1: GND
- Pin 2: N/C
- Pin 3: N/C
- Pin 4: +12VDC

4 Audio Output

3.5mm stereo line level output for monitoring embedded audio channels. The desired audio channels are selected in the Audio onscreen menu. The output level is also controlled through the Audio onscreen menu.

5 Video input connectors

Dual Auto-Sensing HDSDI BNC Video inputs. There are two HDSDI video inputs.

Each input auto-detects HD and SD-SDI video signals.

The output connector is an active re-clocked video signal from the selected HD/SDI input.

OR-841-HDSI Compatible Formats

Format	HD/SD-SDI
480 / 60i	✓
576 / 50i	✓
480 / 60p	
576 / 50p	
720 / 60p	✓
720 / 50p	✓
720 / 30p	✓
720 / 25	✓
720 / 24p	✓
1080 / 60p	
1080 / 50p	
1080 / 60i (30PsF)	✓
1080 / 50i (25PsF)	✓
1080 / 48i (24Psf)	✓
1080 / 30p	✓
1080 / 25p	✓
1080 / 24p	✓
VGA	
SVGA	
XGA	
SXGA	
UXGA	
WUXGA	

On-Screen Menu

OR-841-HDSDI MENU STRUCTURE OVERVIEW			
INFO [1080i / 60]	MODEL NAME	OR-841-HDSDI	
	OPTION CARD	N/A	
	OPTION S/N		
	INPUT	SDI	
	INPUT FORMAT	1080i / 60	
	COLOR MATRIX	709	
	COLOR TEMP	D65	
	VERSION	0.0.0.0	
INPUT [SDI]	RETURN		
	INPUT SELECT	SDI 1 / SDI 2	
	Analog Calibrate	>	
PICTURE	RETURN		
	BRIGHT	0~100 [50] is Calibrated setting	
	CONTRAST	0~100 [80] is Calibrated setting	
	SATURATION	0~100 [50] is Calibrated setting	
	SHARPNESS	0~100 [0] is Calibrated setting	
	GAMMA	1.0 to 3.0 in 0.1 steps [2.2] is Calibrated Setting	
COLOR [D65 / 709]	RETURN		
	COLOR MATRIX	AUTO, RGB, BT. 601, BT. 709	
	COLOR TEMP	CIE D65, JP D93, USER, CAL D65/D93, CAL D65, CAL D93	
	RED BIAS	-128 to 127 [0] is Calibrated Setting	
	GREEN BIAS	-128 to 127 [0] is Calibrated Setting	
	BLUE BIAS	-128 to 127 [0] is Calibrated Setting	
	RED GAIN	0.000 to 1.992 [x1.00] is Calibrated setting	
	GREEN GAIN	0.000 to 1.992 [x1.00] is Calibrated setting	
BLUE GAIN	0.000 to 1.992 [x1.00] is Calibrated setting		
SCREEN [16 : 9]	RETURN		
	SCAN	NORMAL, OVERSCAN, ZOOM	
	ASPECT	AUTO, 4:3, 16:9	
	MONO COLOR SEL	RGB	
		MONO	
		RED	
		GREEN	
		BLUE	
		R+G	
		R+B	
		G+B	
	H/V DELAY	ON / OFF	
SHIFT H	-128 to 127 [0] is Calibrated Setting (- = Right)		
SHIFT V	-128 to 127 [0] is Calibrated Setting (- = Down)		
MARKER	RETURN		
	MARKER	ON / OFF	
	CENTER	ON / OFF	
	ASPECT RATIO	OFF	
		4:03	
		16:9	
		1.85:1	
		2.35:1	
		4:3 & 2.85:1	
		4:3 & 2.35:1	
	SAFETY ZONE	80% to 100% (OFF) [95%] is normal setting	
	MARKER MAT	CLEAR, HALFTONE, BLACK	
LINE THICKNESS	1, 2, 3		
LINE LEVEL	GRAY, HALFTONE, WHITE, INVERT		

On-Screen Menu (continued)

OR-841-HDSI MENU STRUCTURE OVERVIEW		
AUDIO [ON]	RETURN	
	LEVEL METER	ON / OFF
	METER BACKGROUND	ON / OFF
	DISPLAY CHANNELS	1~16
	ACTIVE CH ONLY	ACTIVE, ALL
	METER COLUMNS	DUAL, QUAD
	DISP TYPE	OVERLAP, OVERLAY
	FRONT VOLUME	0 to 40
	REAR VOLUME	0 to 40
	HEADROOM START	-6 to -60 [-20] is SMPTE Standard
	HEADROOM END	0 to -20 [-6] is Normal setting
	LEFT CHANNEL	CHANNEL1 TO CHANNEL 16
	RIGHT CHANNEL	CHANNEL1 TO CHANNEL 16
	LOAD CH PRESET FROM >	PRESET 1 to PRESET 8
	SAVE CH PRESET TO >	PRESET 1 to PRESET 8
	CH PRESET	LOCK / UNLOCK
WAVEFORM [ON]	RETURN	
	LAYOUT	NORMAL, LAYOUT A, LAYOUT B
	WAVEFORM	ON / OFF
	SIZE	SMALL, MEDIUM, LARGE
	POSITION	LEFT TOP, LEFT BOTTOM, RIGHT TO, RIGHT BOTTOM
	TYPE	OVERLAY / OVERLAP
	Y OVER LIMIT	[100.0%] % IRE 0% to 109.1%
Y UNDER LIMIT	[100.0%] % IRE -7.3% to 109.1%	
VECTORSCOPE	RETURN	
	LAYOUT	NORMAL, LAYOUT A, LAYOUT B
	VECTORSCOPE	ON / OFF
	SIZE	SMALL, MEDIUM, LARGE
	POSITION	LEFT TOP, LEFT BOTTOM, RIGHT TOP, RIGHT BOTTOM
	TYPE	OVERLAY / OVERLAP
ClipGuide	RETURN	
	ClipGuide	ON / OFF
	MODE	LUMA (Y)
		LUMA (Y) ON MONO
		CHROMA (C)
		CHROMA (C) ON MONO
		Y & C
	Y & C ON MONO	
	DISPLAY TYPE	ZEBRA / FILL
	Y UPPER LIMIT	[100.0%] % IRE -7.3% to 109.1%
Y UNDER LIMIT	[0.0%] % IRE -7.3% to 109.1%	
C UPPER LIMIT	0~255 [016 = 7.5 IRE, 235 = 100 IRE]	
C LOWER LIMIT	0~255 [016 = 7.5 IRE, 235 = 100 IRE]	
USER ASSIGN	RETURN	
	F-1 THRU F-9	INPUT 1
		INPUT 2
		GAMMA 1.0
		GAMMA 1.8
		GAMMA 2.0
		GAMMA 2.2
		GAMMA 2.4
		GAMMA 2.6
		WHITEBALANCE D65
		WHITEBALANCE D93
		MONO

On-Screen Menu (continued)

USER ASSIGN	F-1 THRU F-9	COLOR CHANNEL	AUDIO PRESET 5
		SCAN	AUDIO PRESET 6
		ASPECT	AUDIO PRESET 7
		ZOOM	AUDIO PRESET 8
		HV DELAY	LAYOUT A
		MARKER	LAYOUT B
		AUDIO METER	WAVEFORM MON
		AUDIO PRESET 1	VECTORSCOPE
		AUDIO PRESET 2	ClipGuide
		AUDIO PRESET 3	TIMECODE
		AUDIO PRESET 4	
	ROTARY 1	VOLUME	
		BRIGHT	
		CONTRAST	
		SATURATION	
SHARPNESS			
REMOTE	RETURN		
	PIN 1 THRU 8 (Pin 5 is Ground)	INPUT 1	
		INPUT 2	
		GAMMA 1.0	
		GAMMA 1.8	
		GAMMA 2.0	
		GAMMA 2.2	
		GAMMA 2.4	
		GAMMA 2.6	
		WHITEBALANCE D65	
		WHITEBALANCE D93	
		MONO	
		SCAN	
		ASPECT	
		ZOOM	
		HV DELAY	
		RED ONLY	
		BLUE ONLY	
		GREEN ONLY	
		MARKER	
		AUDIO METER	
		AUDIO PRESET 1	
		AUDIO PRESET 2	
		AUDIO PRESET 3	
		AUDIO PRESET 4	
		AUDIO PRESET 5	
		AUDIO PRESET 6	
		AUDIO PRESET 7	
		AUDIO PRESET 8	
		LAYOUT A	
		LAYOUT B	
		WAVEFORM MON	
		VECTORSCOPE	
	CLIPGUIDE		
TIMECODE LTC			
TIMECODE VITC 1			
TIMECODE VITC 2			

On-Screen Menu (continued)

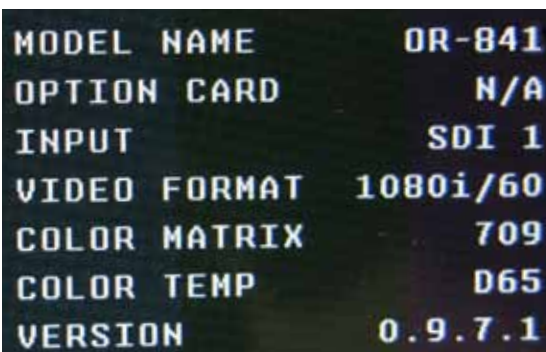
REMOTE	PIN 1 THRU 8 (Pin 5 is Ground)	R TALLY
		G TALLY
		B TALLY
		LEFT R TALLY
		LEFT G TALLY
		LEFT B TALLY
		RIGHT R TALLY
		RIGHT G TALLY
SETUP	RETURN	
	FORMAT DISP	AUTO / ON / OFF
	TIMECODE	OFF / LITC / VITC1 / VITC2
	POWER SAVE	ALWAYS ON
		2 MIN
		5 MIN
		10 MIN
		30 MIN
		1 HOUR
	2 HOUR	
	KEY LOCK	LOCK / UNLOCK
	RESET TO MFG DEFAULT >	REST NOW / CANCEL
BACKUP USER CONFIG >	BACKUP NOW / CANCEL	
RESTORE USER CONFIG	RESTORE NOW / CANCEL	

Main Menu and Navigation

Access the main menu by pushing the center **MENU** button on the front panel of the monitor.



- Step through menu items by using the RotoMenu control.
- Choose a submenu or select a menu item by pushing the RotoMenu control.
- Return to the previous menu by pressing the F-9 button.
- Exit the main menu by again pressing the F-9 button.



INFO SUBMENU

The INFO Submenu is a read-only display that gives the user information about the particular screen being viewed.

No adjustment can be made from this submenu.

INPUT SUBMENU

The Input sub menu allows the user to select either the SDI-1 / SDI-2 inputs or the Optional Input module if installed as the source to be displayed.

PICTURE SUBMENU

The Picture submenu allows the user to make adjustments to Brightness, Contrast, Saturation, Sharpness and Gamma.

Brightness

- Varies between 0 and 100 (50 is standard).
- 50 is default value with standard black level.
- Increasing brightness level allows user to see BTB (Blacker-than-Black).

Contrast

- Varies between 0 and 100 (80 is standard).
- 80 is default value with 100% gain of video signal.

Saturation

- Varies between 0 and 100 (50 is standard).
- 50 is default value with nominal color saturation.
- Setting to 0 should display as monochrome.
- Increasing value will increase color saturation.

Sharpness

- Varies between 0 and 100 (0 is standard).
- 0 is default value with no scaling artifact.

Gamma

- Varies between 1.0 and 3.0 with 0.1 steps.
- If White Balance is set to User Mode, changing gamma will have no effect.



COLOR SUBMENU

The Color submenu allows the user to access to the Color management controls.

■ Color Matrix

Auto

- System automatically selects correct matrix.
- Typically, 601 for SD Formats, 709 for HD Formats.

RGB

- User can manually set to RGB.
- RGB should be used with GBR422 systems.

601

- Conforms to ITU-R BT.601 matrix.

709

- Conforms to ITU-R BT.709 matrix.

■ Color Temp

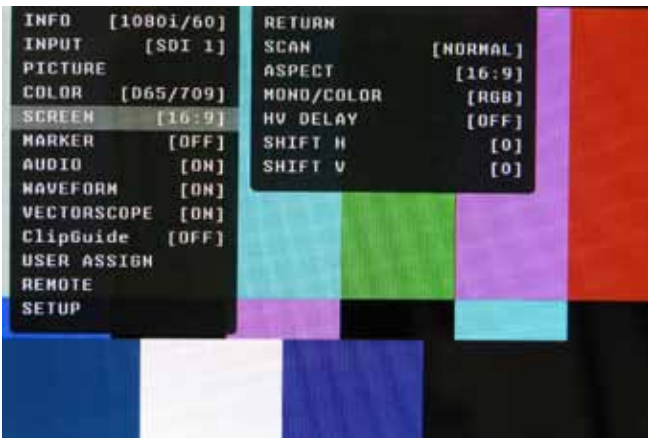
Use this setting to choose between color temperature presets:

- D65 (6500K). Conforms to CIE D65 White Point. $x = 0.3127$, $y = 0.3290$
- D93 (9300K). Conforms to Japanese D93 White Point. $x = 0.2830$ $y = 0.2980$
- USER (Adjustable Color Bias and Gain)
- CAL D65/D93
- CAL D65
- CAL D93

■ RGB Bias and Gain

Select this submenu to fine-tune the monitor's color balance (R, G, B) or execute the One Button Auto White Balance function. The color calibration procedure is described at the rear of this manual. Fine-tuning the monitor's color balance (R, G, B) should only be done by someone experienced with video engineering, as this will alter the overall color shading of the screen. The purpose is to allow color matching to other types of monitors and/or displays. NOTE: The Color Temperature preset will automatically switch to CUSTOM when Color Bias or Gain settings are adjusted. It is normal for color bias adjustments to be very subtle. When selecting the RGB Bias and Gain submenus, changes to Gain and Bias will be seen in real time. Once the proper level is achieved, the user must save this setting by pressing the RotoMenu encoder. If the user leaves the setting menu before saving, the value will return to the original setting.





SCREEN SUBMENU

■ Scan

Normal (Zero Scan)

- Whole picture should be visible without any cropping.
- When in normal mode, it should not see non-active areas such as SAV, EAV.

Over (End-User TV Production Scan)

- 5% of the picture is cropped and zoomed to fill the screen.
- After cropping, it will maintain correct aspect ratio and center.

Zoom

- When in zoom mode, the center portion of the picture is magnified to fill the screen by approximately 4x.

■ Aspect Ratio Settings

Use to switch between Full Screen, 4:3 and 16:9 aspect ratios.

The OR-841-HDSDI monitor has a native resolution of 1024 x 768 RGB pixels, so incoming images are automatically scaled to fit the screen:

- In Auto mode, images are displayed in their native Aspect Ratio. SD is normally 4:3 / HD normally 16:9.
- In 4:3 mode, images are scaled to fill the maximum 4:3 portion of the screen (1024 x 768), with black bars filling the remainder of the screen, regardless of its original format.
- In 16:9 mode, images are scaled to fill the maximum 16:9 portion of the screen (1024 x 576) regardless of its original format.



AUTO with 16:9 source



4:3 Mode with 16:9 source or native 4:3 in AUTO mode.

■ Mono / Color

Use the Mono / Color modes for monitor calibration or to analyze individual color components of an image.

- RGB = displays all three colors (Normal display)
- Mono = displays as monochrome
- Red Channel = displays red channel only
- Green Channel = displays green channel only
- Blue Channel = displays blue channel only
- R+G = Red + Green
- R+B = Red + Blue
- G+B = Green + Blue

■ H/V Delay

Use this setting to enable H & V Delay

- In H & V Delay mode, both horizontal sync and vertical sync are delayed, resulting in both horizontal and vertical blanking periods being shown at the center of the screen.

■ Shift H

Use the RotoMenu control to change the value of this setting which will shift the picture horizontally. Negative values will move the picture Right, while Positive values will move the picture Left. [0] is center value.

■ Shift V

Use the RotoMenu control to change the value of this setting, which will shift the picture Vertically. Negative values will move the picture DOWN, while Positive values will move the picture UP.

MARKER CONFIGURATION SUBMENU

■ Marker

Use this setting to enable or disable all on-screen markers. This setting affects the Center marker, Aspect markers, and Safety marker.

■ Center Marker

Use this setting to display a center marker on the screen.

■ Aspect Markers

Use these settings to superimpose one of 6 markers on the screen when in 16:9 mode.

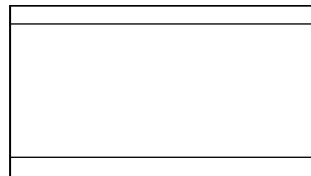
- 4:3
- 16:9
- 1.85:1
- 2.35:1
- 4:3 and 1.85:1
- 4:3 and 2.35:1

■ Safety Marker

Use this setting to adjust the safety marker from 80% to 100% (Off) in 1% steps.



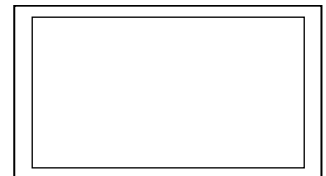
OFF (No Marker)



2.35:1 Aspect Ratio



4:3 Aspect Ratio Marker



90% Safe Area

■ Marker Mat

Use this setting to change the format of the marker curtains between Clear, Halftone, or Black.

■ Line Thickness

Use this setting to choose the line thickness of the markers from 1, 2, or 3 pixels thick.

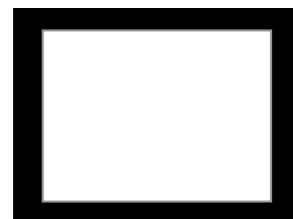
■ Line Type

Use this setting to select the style of line used for markers between White, Halftone, and Invert.

Example (80% Marker in 4:3 Mode):



Normal Background



Black Background

AUDIO CONFIGURATION SUBMENU

■ Level Meter

Selects whether or not to display audio level meters.

■ Meter Background

Selects whether or not to display meter background.

■ Display Channels

Selects how many audio meters you want to display. You may select any number of channels from 1 to 16.

■ Active Channel Only

Allows a choice of All channels or Active channels only. Selecting Active will override the Display Channels setting.

■ Meter Columns

Allows a choice of displaying Level Meters is Dual (2) or Quad (4) columns.

■ Display Type

Allows a choice between Overlap and Overlay modes. Overlap is opaque and will block part of the video image where the Level Meters appear. Overlay is Halftone (semi-transparent) so video can be seen through the Level Meters.

■ Front Volume

Adjusts Headphone and speaker volume on the front panel. This value is adjustable from 0 to 40. Setting to 0 will Mute the output.

■ Rear Volume

Adjusts the Line Output jack on the rear panel. This value is adjustable from 0 to 40. Setting to 0 will Mute the output.

■ Headroom Start

Adjusts the point at which the level meters will change color from Green to Yellow. This is normally the level used for alignment. For digital audio in the US, the SMPTE standard is -20dBFS = 0VU = +4dBu.

The European EBU standard is -18dBFS = 0VU. Other Alignment standards can be set using this menu.

■ Headroom End

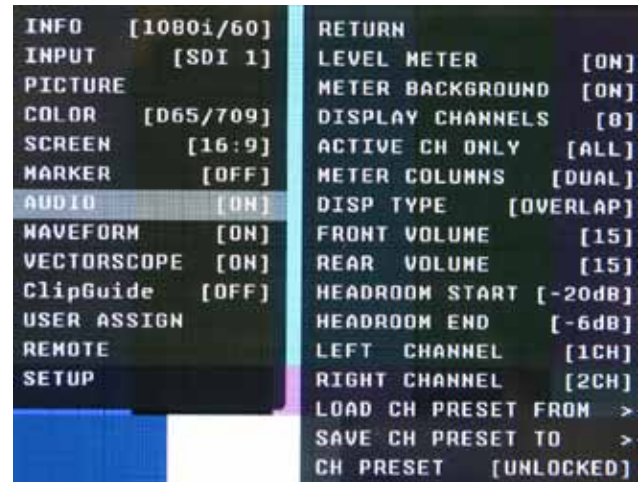
Adjusts the point at which the level meters will change color from Yellow to Red. There is no official standard to where this point should occur. This is an arbitrary setting to give visual warning that the program level is peaking near the 0dBFS point at which there are no more bits and clipping will occur.

■ Left Channel / Right Channel

These menus are used to designate which one of the available 16 audio channels will be assigned to either the Left, Right, or both outputs for listening. For example, the user can choose to send CH 1 to the left output and CH 2 to the Right output, or the user can assign CH 1 to both Left and Right for a mono feed.

■ Load CH Preset From >

Use this menu to recall one of the 8 possible memory locations where the user previously stored channel output assignments. Use of this Load command will override the current channel output assignments.



■ Save CH Preset To >

Use this menu to select which one of 8 memory locations where the user wants to store the current channel output assignments.

■ CH Preset

Use this menu to Lock or Unlock the ability to save to the Ch Preset memory locations. This helps to prevent accidental overwriting of stored presets. When Locked, Ch Presets may still be recalled.

WAVEFORM SUBMENU

■ Layout

Use this menu to choose from several available preset screen layouts. Choosing any of the available preset layouts will override the settings in the Waveform, Size and Position menus.

■ Waveform

Use this menu to turn the Waveform display On or Off when in the Normal mode.

■ Size

Use this menu to choose the size of the Waveform display in Normal mode. Choices are Small, Medium, and Large.

■ Position

Use this menu to select the position you want the Waveform display to occupy on the screen when in the Normal mode. Choices are Left Top, Left Bottom, Right Top, and Right Bottom.

■ Display Type

Use this menu to choose how to display the waveform. The choices are Overlay or Overlap. In the Overlay mode, the waveform will be semi-transparent and the user will be able to see the source video through the waveform. In the Overlap mode, the waveform will be Opaque and will block the source video.

■ Y Over Limit

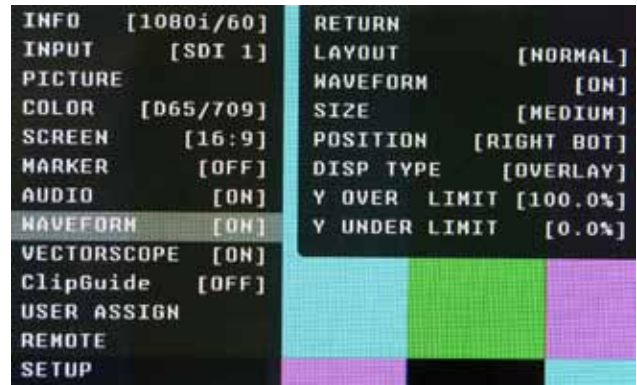
Use this menu to set where you want the waveform to display Red when the video source exceeds the limit set. This value is adjustable from -7.3% to 109.1% IRE. This setting is shared with the ClipGuide Menu.

■ Y Under Limit

Use this menu to set where you want the waveform to display Red when the video source below the limit set. This value is adjustable from -7.3% to 109.1% IRE. This setting is shared with the ClipGuide Menu.

Limits

- Internally, Y values ranges from 0 to 255.
- -7.3 IRE is equal to 0 in digital.
- 0 IRE is equal to 16 in digital.
- 100 IRE is equal to 235 in digital.
- 109.1 IRE is equal to 255 in digital



VECTORSCOPE SUBMENU



■ Layout

Use this menu to choose from several available preset screen layouts. Choosing any of the preset layouts will override the settings in the Vectorscope, Size, and Position menus.

■ Vectorscope

Use this menu to turn the Vectorscope display On or Off when in the Normal mode.

■ Size

Use this menu to choose the size of the Vectorscope display in Normal mode. Choices are Small, Medium, and Large.

■ Position

Use this menu to select the position you want the Vectorscope display to occupy on the screen when in the Normal mode. Choices are Left Top, Left Bottom, Right Top, and Right Bottom.

■ Display Type

Use this menu to choose how to display the Vectorscope. The choices are Overlay or Overlap. In the Overlay mode, the Vectorscope will be semi-transparent and the user will be able to see the source video through the Vectorscope. In the Overlap mode, the Vectorscope will be Opaque and will block the source video.

■ Gain

Use this menu to change the gain of the Vectorscope display. Normally, the Vectorscope displays x1.00. In order to allow a magnified view, the gain is adjustable from x1.00 to x4.98 in .01 steps. Changing this value has no effect on the source material.

ClipGuide SUBMENU



■ ClipGuide

Use this menu to turn the ClipGuide function On or Off.

■ Mode

Allows the choice of which ClipGuide function you want to display. There are 6 modes to choose from:

- Luma (Y) displayed over Color video
- Luma (Y) displayed over Mono video
- Chroma (C) displayed over Color video
- Chroma (C) displayed over Mono video
- Luma (Y) and Chroma (C) displayed over Color Video
- Luma (Y) and Chroma (C) displayed over Mono Video

■ Display Type

ClipGuide will display over and under values in two ways when monitoring the video signal. In the Zebra mode, over and under conditions are indicated in a Zebra (diagonal stripe) pattern. In the Fill mode, over and under conditions are indicated by a solid fill. In either Zebra or Fill mode, Red is the indication for Luma and Yellow is the indication for Chroma.

Y Limits (These values are shared with WFM settings)

Set luminance upper and lower limits to be monitored.

- Limits are displayed in IRE unit
- Varies between -7.3 IRE and 109.1 IRE
- This value will be shown in WFM window as red line
- Any data exceeding these values will be displayed as red on the picture
- These values are shared with WFM settings
- Internally, Y values ranges from 0 to 255
- -7.3 IRE equals to 0 in digital
- 0 IRE equals to 16 in digital
- 100 IRE equals to 235 in digital
- 109.1 IRE equals to 255 in digital

C Limits

Sets the chrominance levels to be monitored.

- Displayed in 8-bit digital video representation
- Any data exceeding these values will be displayed as Yellow in the picture
- The factory preset for C limits are 16 and 240 according to ITU-R BT.709
- Typically these values should not be exceeded during normal video production

USER ASSIGN SUBMENU

■ F-1 thru F-9

There are nine Function Keys and One Rotary Encoder on the front panel of the OR-841-HDSDI. Each of these F-keys key may be assigned any one of 31 different functions as required by the job or individual user. The Rotary Encoder may be assigned in the same manner. These functions are listed in the Menu Overview section of this manual.

INFO	[1080i/60]	RETURN	
INPUT	[SDI 1]	F1	[INPUT 1]
PICTURE		F2	[INPUT 2]
COLOR	[D65/709]	F3	[SCAN]
SCREEN	[16:9]	F4	[ASPECT]
MARKER	[OFF]	F5	[MARKER]
AUDIO	[ON]	F6	[ZOOM]
HAVEFORM	[ON]	F7	[HAVEFORM MON]
VECTORSCOPE	[ON]	F8	[VECTORSCOPE]
ClipGuide	[OFF]	F9	[AUDIO METER]
USER ASSIGN		ROTARY1	[BRIGHT]
REMOTE			
SETUP			

One-way functions

- Pressing pre-defined key will activate the feature
- When it is enabled, the indicator of the key will be lit up.
- Pressing again will have no effect.
FOR EXAMPLE: Selecting Input, Selecting Audio Preset, Selecting White Balance

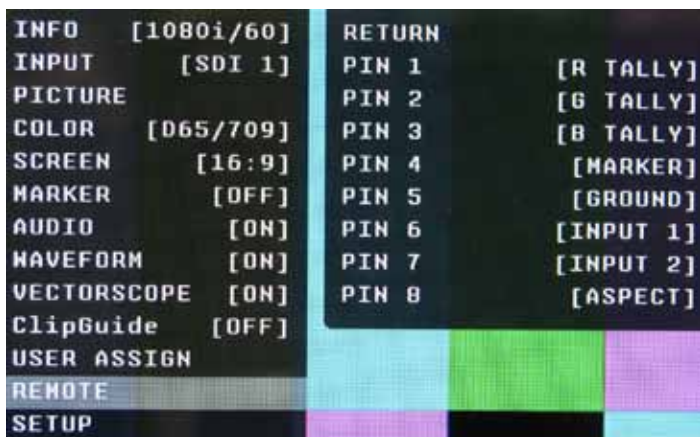
Two-way functions

- Pressing pre-defined key will active the feature
- When it is enabled, the indicator of the key will turn on
- Pressing again will deactivate the feature.
FOR EXAMPLE: Scan, WFM, ALM, Layout, HV Delay

Sequential functions

- Pressing pre-defined key will rotate features in sequence.
FOR EXAMPLE: Timecode, Color Channel
- TimeCode will change its state for OFF->LTC->VITC1->VITC2->OFF
- Color Channel will change its state for RGB->R Only->G Only ... -> RGB

REMOTE SUBMENU



■ Pin 1 through Pin 8

The RJ-45 Remote connector on the rear panel has 8 pins. Pin 5 is Ground, while the remaining 7 pins are pulled high to 3.3VDC and may be used for Tally or other Remote Commands. A list of available Commands and Tally configurations can be found in the Menu Overview section of this manual. The command or Tally is activated by connecting the corresponding Pin (1-4 and 6-8) to Pin 5 (Ground).

Event Trigger

- Two types of events are allowed.
- The falling event is when you pull down to ground, and the rising event is when you remove the ground and the pin returns to normal high state.
- Falling events occurs only once and on the event of power up sequence.
- This means a falling event will occur only once regardless of whether its pin is repeatedly grounded such as when selecting an input source.
- The rising event can only occur once a pin has been pulled down to ground to activate the command such as turning on a tally releasing ground (open circuit) to turn off.
- Priority
- Lower pin number has higher priorities over higher pin numbers during power up sequence.

Tally System

Tally System can be used with non-separated mode and separated mode.

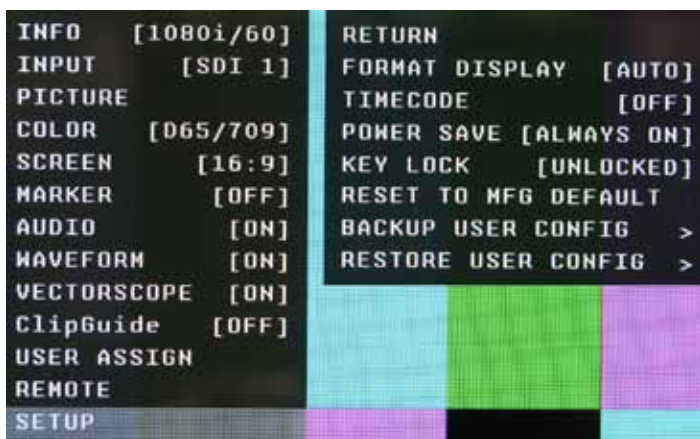
Non-separated mode

- Supports R/G/B tallies.
- Can mix any channels. FOR EXAMPLE: Mix Red and Green for Amber.
- Cannot mix R/G/B for White (It will be pink due to white balance).
- Cannot be assigned with separated tallies.

Left/Right Separated Mode

- Supports R/G/B tallies on each Left and Right.
- Can mix any channels for each Left and Right.
- Cannot mix R/G/B for White (It will be pink due to white balance).
- Cannot be assigned with non-separated tallies.

SETUP SUBMENU



■ Format Display

Auto

This mode will display the video format information for about 8 seconds whenever video format is changed.

Off - This mode will not display any video format information.

On - This mode will always display current video format information.

■ TimeCode

Selects among the following options: OFF / LTC / VITC1 / VITC2. In the most cases, the value of LTC and VITC1 will be identical to each other.

■ Power Save

- When enabled, the monitor will go to sleep after a predefined time has passed when loss of picture occurs.
- When a valid video format is detected, the monitor will wake up from the sleep state.
- Pressing any front panel keys will wake up the monitor.
- In the sleep state, all lights (including the backlight and front key indicators) are turned off.
- Any change in parallel remote status will wake up the monitor.
- Tally status is not affected by sleep mode.

■ Key Lock

When it is locked, user cannot use front panel keys except for accessing the menu.

■ Reset to MFG Default

- This will Restore all configuration values and functions to the factory preset state.
- This will not change Model Name, Serial Number, or White Balance Data.
- Requires Confirm action by selecting Confirm again.
(Select Reset -> RotoMenu control -> Select Confirm -> Press RotoMenu control)
- Resetting default will not effect backed up data.

■ Backup User Configuration

- This command backs up all user information to secondary EEPROM (User settings)
- Requires Confirm action by selecting Confirm again.
(Select Backup -> Press RotoMenu control -> Select Confirm -> Press RotoMenu control)

■ Restore User Configuration

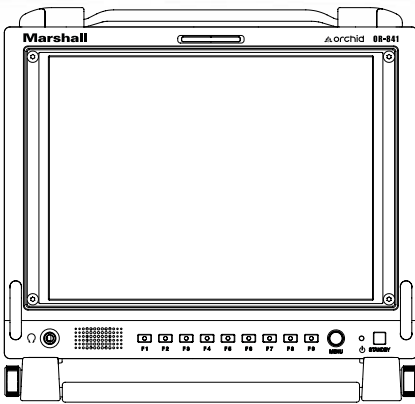
- This will Restore all configuration values and functions to the factory preset state.
- This will not change Model Name, Serial Number, or White Balance Data.
- Requires Confirm action by selecting Confirm again. (Select Reset -> Press the RotoMenu control -> Select Confirm -> Press Enter the ROTO-Menu control)
- Resetting default will not effect backed up data.

■ Backup User Configuration

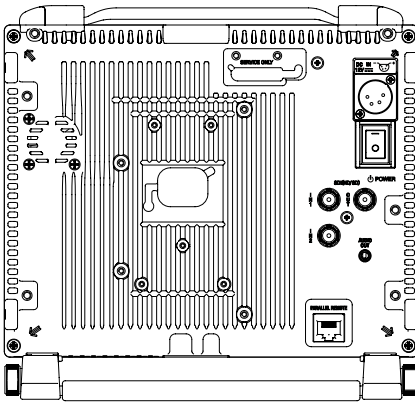
- This command backs up all user information to secondary EEPROM (User settings)
- Requires Confirm action by selecting Confirm again. (Select Backup -> Press the RotoMenu control -> Select Confirm -> Press Enter the RotoMenu control)

Specifications

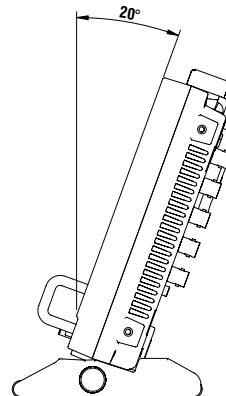
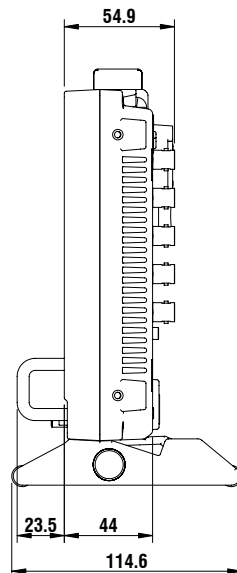
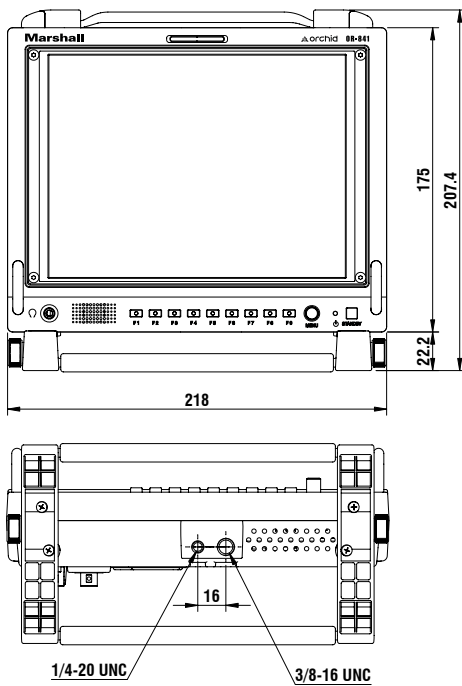
Front



Rear



Dimensions



■ PANEL

Screen Size	8.4" Diagonal
Display Area (h x v)	6.7" x 5"
Aspect Ratio	4:3
Pixels	1024 x 768
Color Depth	8-bit (16.7M colors)
Viewing Angle (h x v)	85° + 85° (H) 50° + 60° (V)
Brightness	400 cd/m ²
Contrast Ratio	400:1

■ VIDEO INPUT/OUTPUT

HD/SD-SDI Video Input / Output

■ CONNECTORS

Video Input - 2 x BNC Female (75 Ω)

Video Output (Active Loop-Through) - 1 x BNC Female (75 Ω)

Parallel Remote - RJ-45

Optional Input Slot

Audio Output Jacks - 3.5mm Stereo x 2. One Front and One Rear.

Service Terminal

Power Input - 4-Pin Male XLR

Pin 1: GND

Pin 2: N/C

Pin 3: N/C

Pin 4: +12VDC

■ ELECTRICAL

Power Consumption - 1.5 Amp (Max) @ 12VDC (18W Max)

Voltage Requirement - 12VDC (10VDC-18VDC)

■ MECHANICAL

Dimensions (w x h x d)	8.6" x 8.2" x 1.7"
Weight (Monitor Only)	4.6 lbs including power adapter
Operating Temperature	32° F to 104° F (0° C to 40° C)
Storage Temperature	-4° F to 104° F (-20° C to 40° C)
RoHs	Do not dispose. Return to Manufacturer or Authorized Recycle Facility.

Maintenance / Color Calibration Procedure

■ Screen Cleaning

Periodically clean the screen surface using ammonia-free cleaning wipes (Marshall Part No. V-HWP-K). A clean micro-fiber cloth can also be used using only non-abrasive and ammonia-free cleaning agents. Do not use paper towels. Paper towel fibers are coarse and may scratch the surface of the polycarbonate faceplate or leave streaks on the surface. Antistatic and fingerprint resistant cleaning agents are recommended. Do not apply excessive pressure to the screen to avoid damaging the LCD.

■ Faceplate Dusting

Dust the unit with a soft, damp cloth or chamois. Dry or abrasive cloths may cause electrostatic charge on the surface, attracting dust particles. Neutralize static electricity effects by using the recommended cleaning and polishing practice.

■ Color Calibration Procedure

- Allow both the unit you want to calibrate and the Minolta® CA-210 to warm up for a minimum of 20 minutes.
- Attach the CA-210 color probe to the update dongle.
- With the unit still turned on, insert the update dongle into the service port at the rear of the OR-841-HDSDI.
- Use the RotoMenu navigation control and go to:

Color Menu

Color Temp

- Cal D65/D93 to calibrate both
- Cal D65 to calibrate only D65
- Cal D93 to calibrate only D93

Press enter once to select and again to confirm

- Follow the on-screen instructions

Notes:

1. If there is no color probe attached or you make a mistake and try to calibrate the incorrect screen, you will get an error message and the screen will default to previous settings.
2. If the calibration process is interrupted while in progress, the current screen settings will be corrupted and the calibration process will have to be repeated.



Warranty

Marshall Electronics warrants to the first consumer that this **OR-841-HDSDI** LCD monitor will (under normal use) be free from defects in workmanship and materials, when received in its original container, for a period of one year from the purchase date. This warranty is extended to the first consumer only, and proof of purchase is necessary to honor the warranty. If there is no proof of purchase provided with a warranty claim, Marshall Electronics reserves the right not to honor the warranty set forth above. Therefore, labor and parts may be charged to the consumer. This warranty does not apply to the product exterior or cosmetics. Misuse, abnormal handling, alterations or modifications in design or construction void this warranty. It is considered normal for a minimal amount of pixels, not to exceed three, to fail on the periphery of the display active viewing area. Marshall Electronics reserves the option to refuse service for display pixel failure if deemed unobtrusive to effective use of the monitor by our technicians. No sales personnel of the seller or any other person is authorized to make any warranties other than those described above, or to extend the duration of any warranties on behalf of Marshall Electronics, beyond the time period described above. Due to constant effort to improve products and product features, specifications may change without notice.

Marshall Electronics, Inc.

1910 East Maple Avenue

El Segundo, CA 90245

Tel.: (800) 800-6608 / (310) 333-0606

Fax: (310)333-0688

www.LCDracks.com / sales@lcdracks.com

2009 - 12/15

Free Manuals Download Website

<http://myh66.com>

<http://usermanuals.us>

<http://www.somanuals.com>

<http://www.4manuals.cc>

<http://www.manual-lib.com>

<http://www.404manual.com>

<http://www.luxmanual.com>

<http://aubethermostatmanual.com>

Golf course search by state

<http://golfingnear.com>

Email search by domain

<http://emailbydomain.com>

Auto manuals search

<http://auto.somanuals.com>

TV manuals search

<http://tv.somanuals.com>