







# Pico Pocket Projector



## EYE SAFETY WARNINGS

-  Avoid staring/facing directly into the projector beam at all times. Keep your back to the beam as much as possible.
-  A stick or laser pointer is recommended to avoid the need for the user to enter the beam.
-  When projector is used in a classroom, adequately supervise students when they are asked to point out something on the screen.
-  In order to minimize power, use room blinds to reduce ambient light levels.

## IMPORTANT SAFETY INSTRUCTION

1. Do not block any ventilation openings. To ensure reliable operation of the projector and to protect from over heating, it is recommended to install the projector in a location that does not block ventilation. As an example, do not place the projector on a crowded coffee table, sofa, bed, etc. Do not put the projector in an enclosure such as a book case or a cabinet that restricts air flow.
2. Do not use the projector near water or moisture. To reduce the risk of fire and/or electric shock, do not expose the projector to rain or moisture.
3. Do not install near heat sources such as radiators, heaters, stoves or any other apparatus such as amplifiers that emits heat.
4. Do not use the projector in direct sunlight.
5. Do not use near any appliance generating a strong magnetic field.
6. Do not use the projector in areas susceptible to excessive dust and dirt.
7. Turn off the product before cleaning.
8. Turn off the product before removing the battery.
9. Disconnect the battery if the product is not being used for a long period of time.
10. Ensure that the ambient room temperature is within 5- 35°C.
11. Relative Humidity is 5 - 35°C, 80% (Max.), non-condensing.
12. Do not expose the battery to temperatures above +60°C (+140°F)
13. New or idle batteries can have short-term reduced capacity. Fully charge the battery before initial use.
14. Do not put the battery into your mouth.
15. Do not let the battery contacts touch another metal object.
16. Do not drop, throw or try to bend your product.
17. May explode if disposed of in fire.
18. Clean only with dry cloth.
19. Only use attachments/accessories specified by the manufacturer.
20. Do not use the unit if it has been physically damaged or abused. Physical damage/abuse would be (but not limited to):
  - Unit has been dropped.
  - Charger or plug has been damaged.
  - Liquid has been spilled on to the projector.
  - Projector has been exposed to rain or moisture.
  - Something has fallen in the projector or something is loose inside.
 Do not attempt to service the unit yourself. Opening or removing covers may expose you to dangerous voltages or other hazards. Please contact your local reseller or service center before you send the unit for repair.
21. Do not let objects or liquids enter the projector. They may touch dangerous voltage points and short out parts that could result in fire or electric shock.
22. See projector enclosure for safety related markings.
23. The unit should only be repaired by appropriate service personnel.
24. Do not touch the projector for a long time while the projector is used.
25. CAUTION: Risk of Explosion if Battery is replaced by an Incorrect Type.
26. Dispose of Used Batteries According to the Instructions.

## REGULATION & SAFETY NOTICES

This appendix lists the general notices of your Projector.

### FCC notice

This device has been tested and found to comply with the limits for a Class B digital device pursuant to Part 15 of the FCC rules. These limits are designed to provide reasonable protection against harmful interference in a residential installation. This device generates, uses, and can radiate radio frequency energy and, if not installed and used in accordance with the instructions, may cause harmful interference to radio communications.

However, there is no guarantee that interference will not occur in a particular installation. If this device does cause harmful interference to radio or television reception, which can be determined by turning the device off and on, the user is encouraged to try to correct the interference by one or more of the following measures:

- Reorient or relocate the receiving antenna.
- Increase the separation between the device and receiver.
- Connect the device into an outlet on a circuit different from that to which the receiver is connected.
- Consult the dealer or an experienced radio/television technician for help.

### Notice: Shielded cables

All connections to other computing devices must be made using shielded cables to maintain compliance with FCC regulations.

### Caution

Changes or modifications not expressly approved by the manufacturer could void the user's authority, which is granted by the Federal Communications Commission, to operate this device.

### Operation conditions

This device complies with Part 15 of the FCC Rules. Operation is subject to the following two conditions:

1. this device may not cause harmful interference, and
2. this device must accept any interference received, including interference that may cause undesired operation.

### Notice: Canadian users

This Class B digital apparatus complies with Canadian ICES-003.

### Remarque à l'intention des utilisateurs canadiens

Cet appareil numérique de la classe B est conforme à la norme NMB-003 du Canada.

### Declaration of Conformity for EU countries

- EMC Directive 2004/108/EC (including amendments)
- Low Voltage Directive 2006/95/EC
- R & TTE Directive 1999/5/EC (if product has RF function)

## DISPOSAL OF OLD ELECTRICAL & ELECTRONIC EQUIPMENT

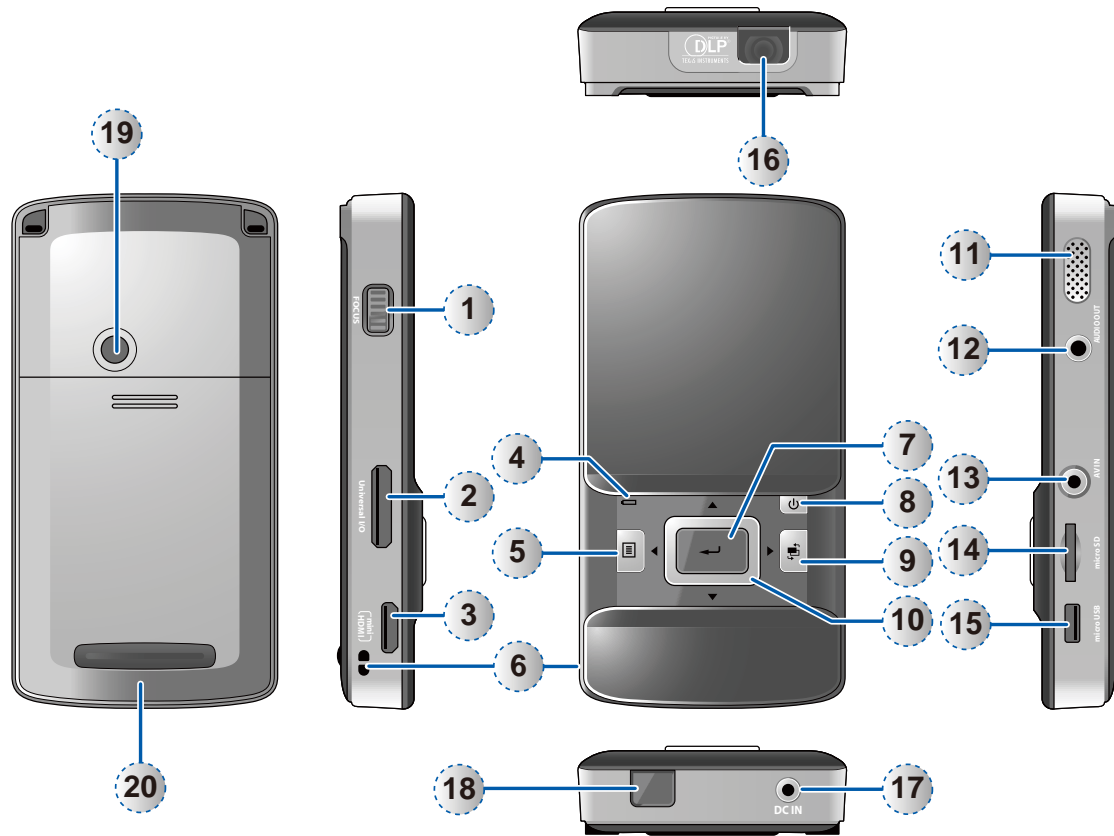
(Applicable throughout the European Union and other European countries with separate collection programs)

This symbol found on your product or on its packaging, indicates that this product should not be treated as household waste when you wish to dispose of it. Instead, it should be handed over to an applicable collection point for the recycling of electrical and electronic equipment. By ensuring this product is disposed of correctly, you will help prevent potential negative consequences to the environment and human health, which could otherwise be caused by inappropriate disposal of this product. The recycling of materials will help to conserve natural resources.



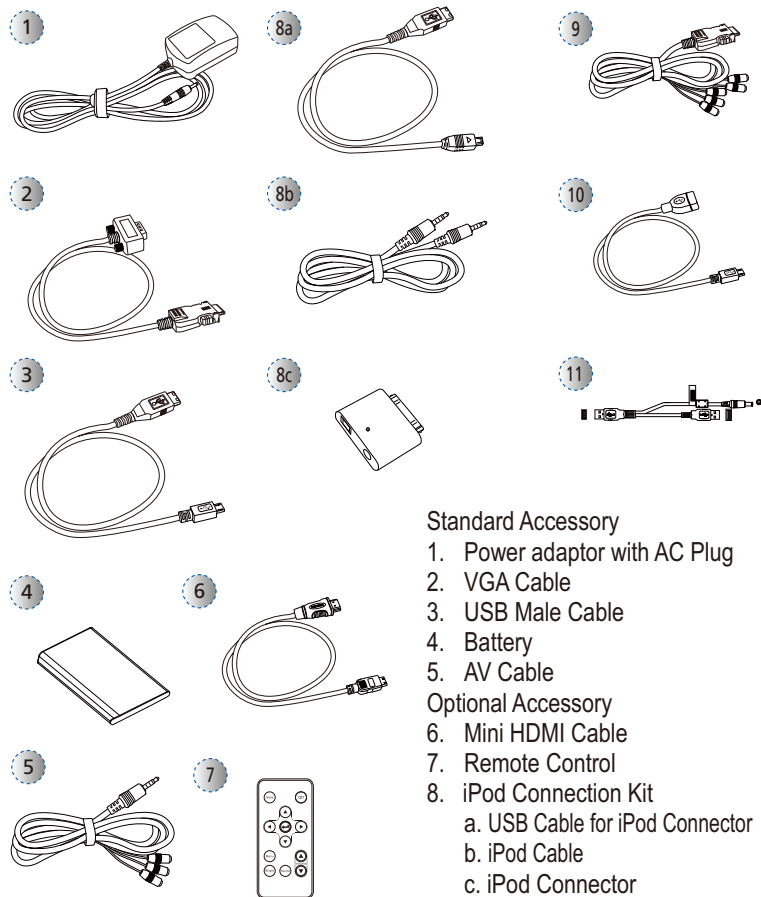
This symbol is only valid in the European Union.

If you wish to discard this product, please contact your local authorities or dealer and ask for the correct method of disposal.



1. Focus Dial
2. VGA/Component Input Connector
3. Mini HDMI Connector
4. Battery Indicator
5. Menu / Esc Button
6. Through-hole for straps
7. Enter Button
8. Power Button
9. Auto Search Source Button
10. Navigation / Volume Button (up/down/left/right)
11. Speaker
12. Audio Out Connector
13. AV Input Connector
14. MicroSD Card Slot
15. Micro USB port
16. Lens
17. DC Input
18. IR Receiver
19. Screw Hole for Tripod Converter
20. Battery Cover

PACKAGE OVERVIEW



Standard Accessory

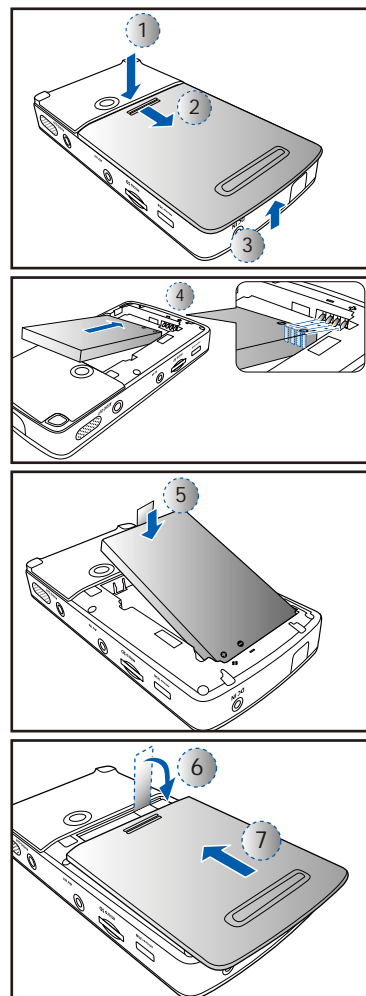
1. Power adaptor with AC Plug
2. VGA Cable
3. USB Male Cable
4. Battery
5. AV Cable

Optional Accessory

6. Mini HDMI Cable
7. Remote Control
8. iPod Connection Kit
  - a. USB Cable for iPod Connector
  - b. iPod Cable
  - c. iPod Connector
9. Component Cable
10. Female USB Cable
11. USB to DC jack cable

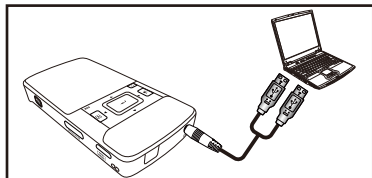
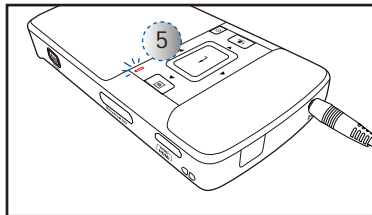
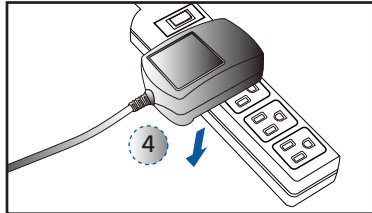
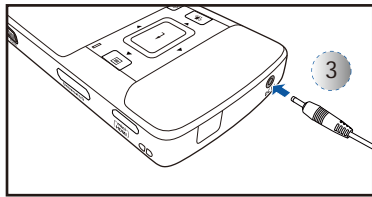
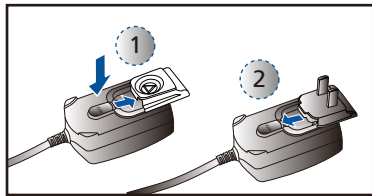
<Note>  
The standard accessories may vary in each region due to different applications.

INSTALLING THE BATTERY



1. Remove the battery cover. (①~③)
2. Insert the battery with the electrical contact facing downward and away from the lens. (④)
3. Ensure that the battery pull tab extends from under the battery. (⑤)
4. Slide the battery cover back into place over the battery pull tab. (⑥~⑦)

## CHARGING THE BATTERY



1. Remove protection cap and insert the plug. (①~②)
2. Connect the charger. (③~④)
3. During charging the LED indicator lights red. (⑤)
4. The LED Charge Indicator will go off when battery is fully charged. This process may take up to 2.5 hours

⚠ Projector will not charge while operating.

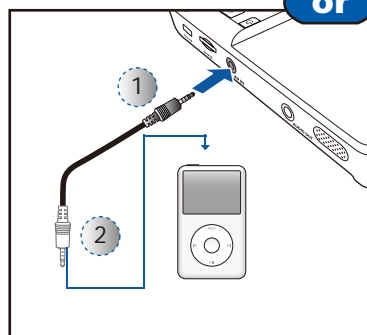
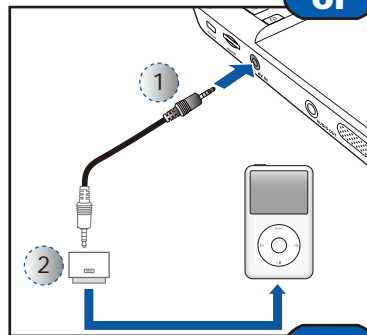
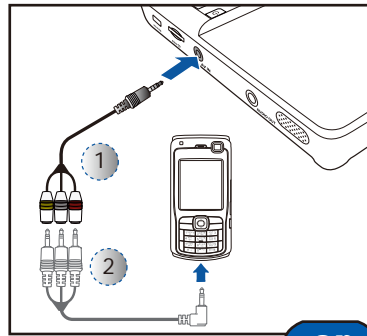
### <Note>

1. For more LED indicator, see page 7.
2. After the projector is turned off, the battery may not start charging right away due to over temperature protection.

### <Optional>

The PK201 can also be charged via USB to DC cable (⑥)

## CONNECT INPUT SOURCE - (VIDEO IN)

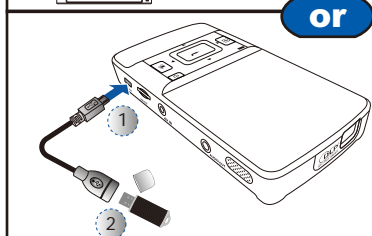
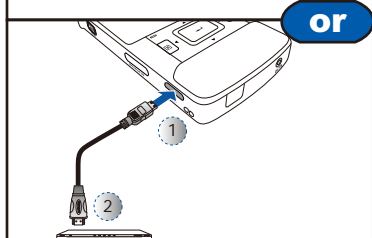
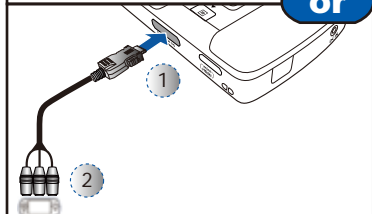
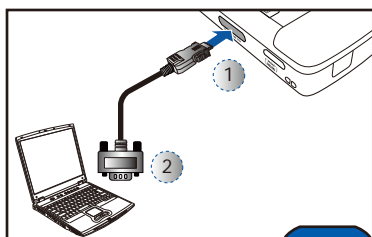


1. Connect the AV input source. (①~②)
2. After powering on projector, press "Auto Search Source Button" to change sources.
3. Connect external speakers to the audio out connector of the projector. (③)

### <Note>

1. All other brand and product names are trademarks or registered trademarks of their respective companies.
2. The connecting cable of video output device is not supplied, please contact their service center.
3. iPod nano/iPod touch/iPhone/iPod classic (version 5 and above)
4. Designed for iPod/iPhone/Mobile phone/PMP with TV out functions. Using with device with audio signal voltage > 0.3Vrms is not recommended.

## CONNECT INPUT SOURCE - (VGA/USB/HDMI/COMPONENT IN)



1. Connect the VGA/Component source device with the Universal I/O connector. (①~②)
  2. After powering on projector, press "Auto Search Source Button" to change sources.
- ⚠ Insert universal connector with arrow mark facing up.

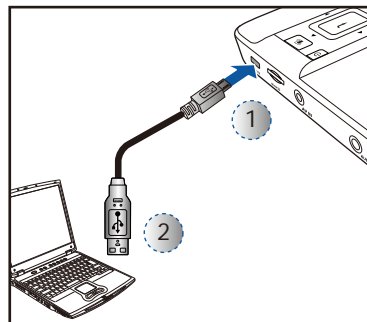
### <Note>

1. USB device: Support USB Flash Drive up to 5V/150mA, but does not support USB Hard Disk Drive
2. Female USB cable, Component cable, and HDMI cable are optional accessories.

1. Connect the HDMI source device to the mini HDMI connector.
2. After powering on projector, press "Auto Search Source Button" to change sources.

1. Connect the USB flash drive to the micro USB port using the female USB cable.
2. Select USB Flash Drive from the Main Menu.

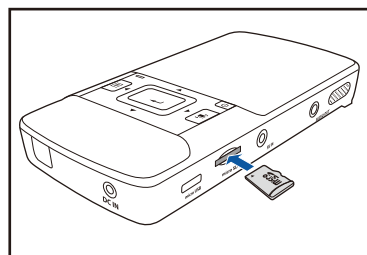
## CONNECT INPUT SOURCE DATA TRANSFER



1. Connect laptop or PC for data transfer to the Projector internal memory or additional MicroSD memory using the supplied Male USB Cable. When connected, switch the Projector on.

<Note> The laptop/PC can only detect the input source when the Projector is switched on. The projection will stop when this connection is made.

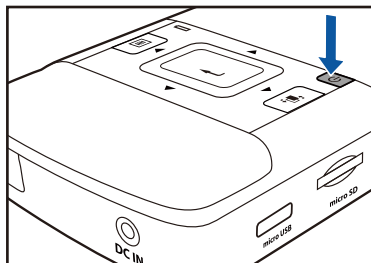
## INSERT MICROSD CARD



1. Insert a MicroSD card into the slot with the gold contacts facing down.

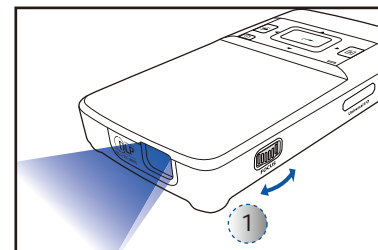
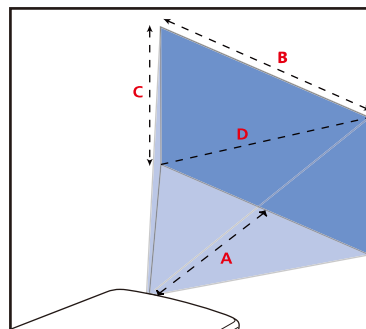


1. Screw a standard tripod into the screw hole on the projector.



1. Press the Power button.

Projection Distance (A)		Screen Size - Width (B)		Screen Size - Height (C)		Screen Diagonal (D)	
Meter	inch	(mm)	(inch)	(mm)	(inch)	(mm)	(inch)
0.245	9.6	111	4.4	63	2.5	128	5.0
0.500	19.7	227	8.9	128	5.0	261	10.3
0.700	27.6	318	12.5	179	7.0	365	14.4
0.975	38.4	443	17.4	249	9.8	508	20.0
1.500	59.1	682	26.8	384	15.1	782	30.8
2.000	78.7	909	35.8	511	20.1	1043	41.1
2.500	98.4	1136	44.7	639	25.2	1304	51.3
3.215	126.6	1461	57.5	822	32.4	1677	66.0



1. Adjust Focus (⊕) until image is clear.

DOWNLOADING THE PC SOFTWARE

Use the PC software to encode and transfer all file types to the Projector.

To install the PC software:

1. Connect the Projector for data transfer (see previous item).
2. Browse the Projector internal memory (like a USB memory stick) for a folder called "PC Software".
3. In this folder, double-click on the file called "Setup" or "setup.exe" to begin the installation process, then follow the on screen instructions.

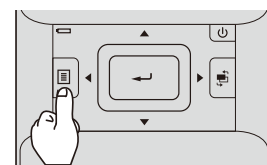
Note: You can find Arcsoft license key on Quick Start Guide

4. After the installation, the "Arcsoft Media Converter" application is launched.
5. To convert and transfer files to the Projector, drag and drop files to the Arcsoft Media Converter application window.

THIS PRODUCT IS LICENSED UNDER THE MPEG-4 VISUAL PATENT PORTFOLIO LICENSE FOR THE PERSONAL AND NON-COMMERCIAL USE OF A CONSUMER FOR (i) ENCODING VIDEO IN COMPLIANCE WITH THE MPEG-4 VISUAL STANDARD ("MPEG-4 VIDEO") AND/OR (ii) DECODING MPEG-4 VIDEO THAT WAS ENCODED BY A CONSUMER ENGAGED IN A PERSONAL AND NONCOMMERCIAL ACTIVITY AND/OR WAS OBTAINED FROM A VIDEO PROVIDER LICENSED BY MPEG LA TO PROVIDE MPEG-4 VIDEO. NO LICENSE IS GRANTED OR SHALL BE IMPLIED FOR ANY OTHER USE. ADDITIONAL INFORMATION INCLUDING THAT RELATING TO PROMOTIONAL, INTERNAL AND COMMERCIAL USES AND LICENSING MAY BE OBTAINED FROM MPEG LA, LLC. SEE [HTTP://WWW.MPEGLA.COM](http://www.mpegla.com).

HOW TO USE THE MENU

Main menu

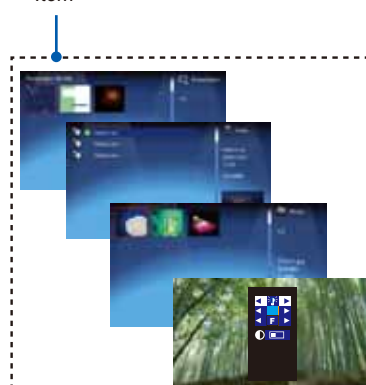


1. Display the Main Menu. (←)
2. Highlight the desired option (←▶)
3. Enter the desired option. (←)
4. Highlight the desired item. (←▶)
5. Select the item. (←)
6. Press (⏪) to go up one directory.

Under external signal mode, press (⏪) to bring out the OSD.

- The OSD disappears in 5 seconds if there is no OSD operation.
- The projector will automatically shut down if the projector is left idle at its main menu or file browser for 3 minutes.

Item

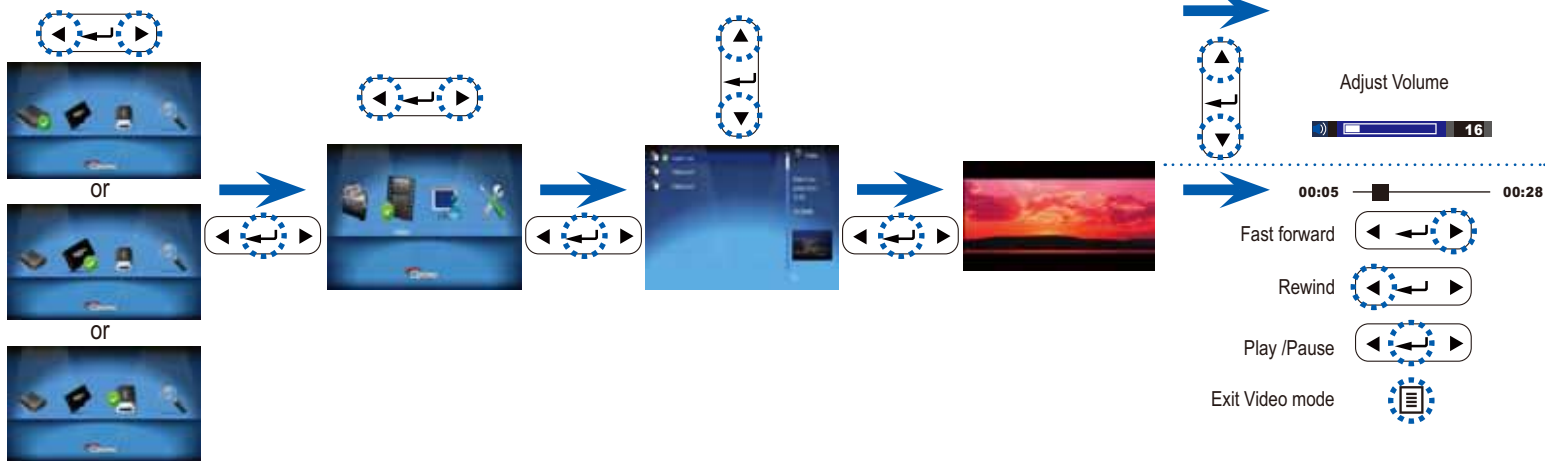


<Note>  
External signal mode is applicable for connecting VGA, Composite, HDMI and Component signals.

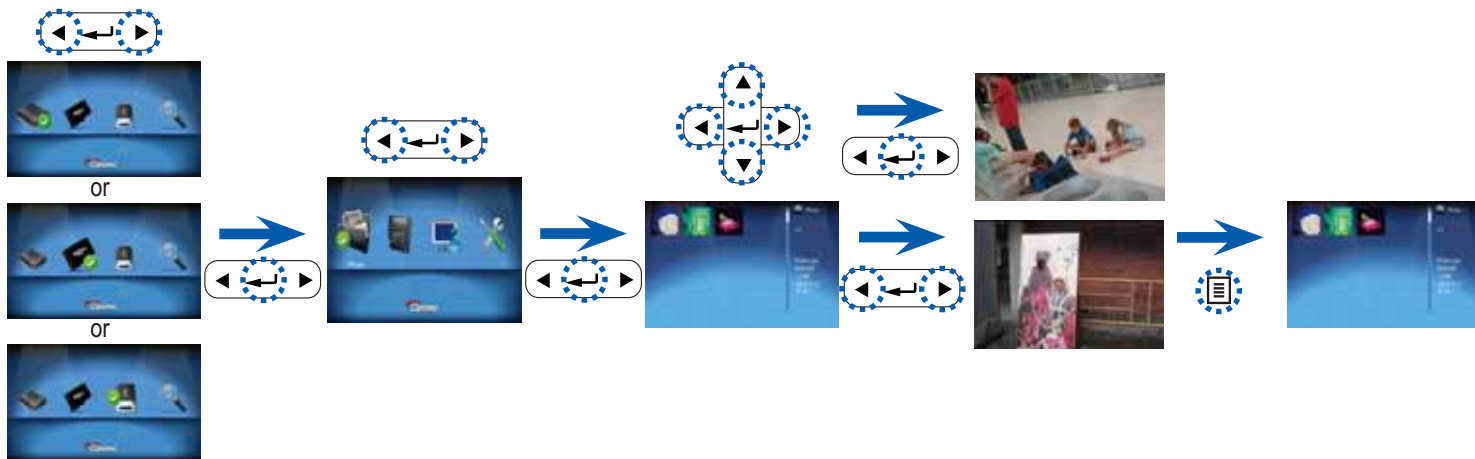
<Note>  
The first time you use the projector, you can select your preferred language from the quick menu after the startup screen displays.

# HOW TO USE THE MENU - SOURCE: INTERNAL MEMORY, MICRO SD CARD, AND USB FLASH DRIVE

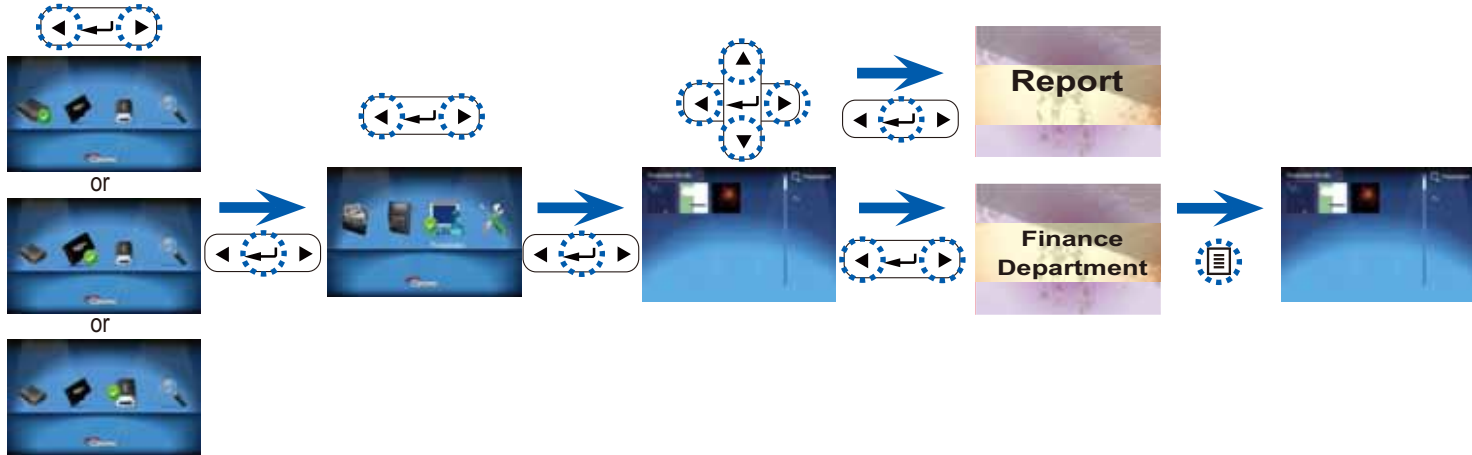
## Playing Videos from the Internal Memory / Micro SD Card / USB Flash Drive



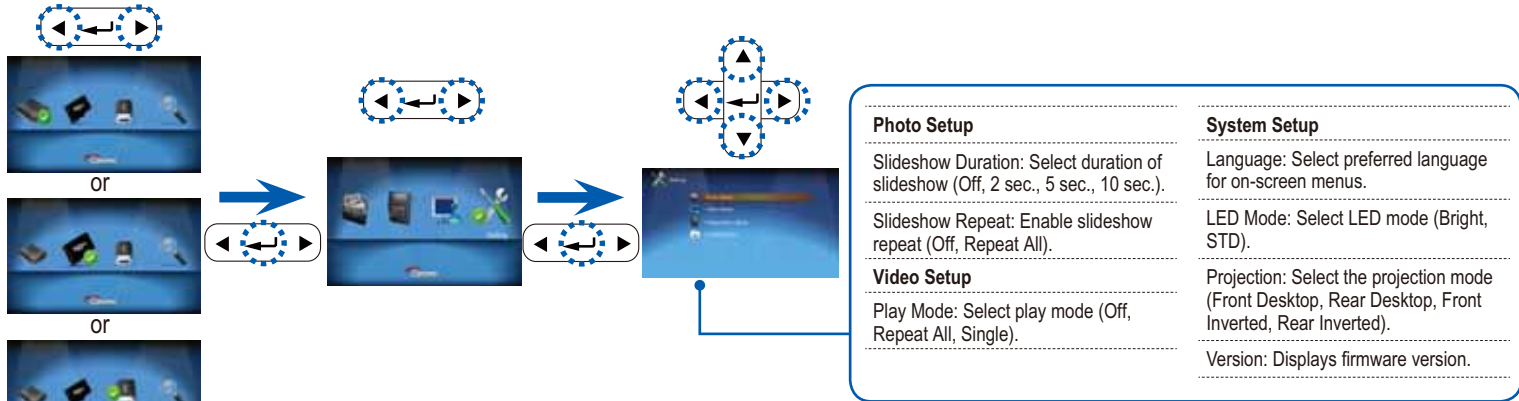
## Displaying Photos from the Internal Memory / Micro SD Card / USB Flash Drive



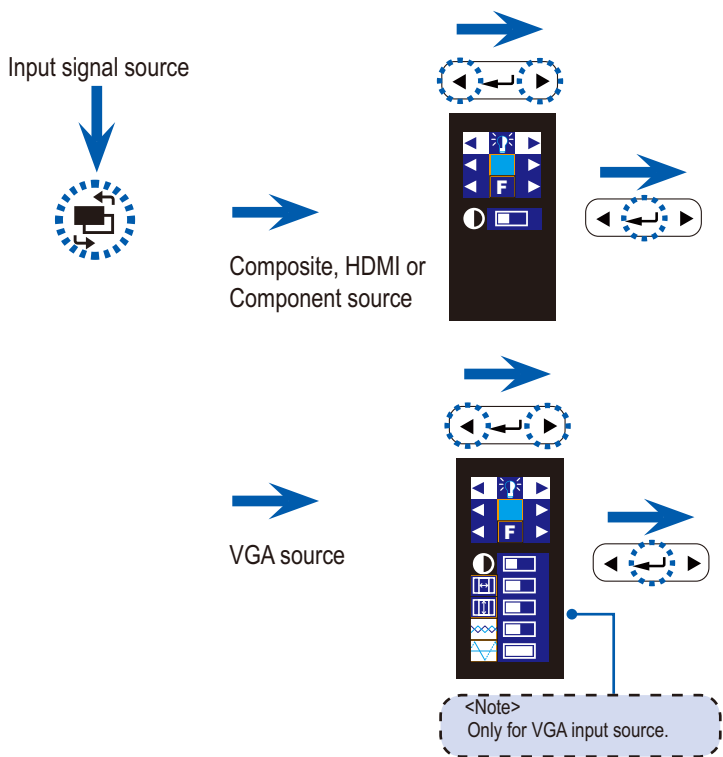
## Presentation from the Internal Memory / Micro SD Card / USB Flash Drive



## Navigating the Settings Menu



# HOW TO USE THE MENU - SOURCE: COMPOSITE AV, VGA, COMPONENT, AND HDMI



	Bright mode: Full LED power.		Contrast: adjust contrast
	STD mode: Standard LED power.		H. Position: adjust the horizontal position.
	Front Desktop.		V. Position: adjust the vertical position.
	Rear Desktop.		Phase: change the display data frequency to match the frequency of your computer's graphic card. Use this function only if the image appears to flicker vertically.
	Front Inverted.		Frequency: synchronize the signal timing of the display with the graphic card. If the image appears to be unstable or flickers, use this function to correct it.
	Rear Inverted.		
	4x3 aspect ratio.		
	16x9 aspect ratio.		
	Auto aspect ratio.		

## TROUBLESHOOTING

If you experience a problem with your projector, please refer to the following information. If a problem persists, please contact your local reseller or service center.

### Image Problems

- ?** No image appears on-screen
  - Ensure the cables/charger/battery are correctly and securely connected.
  - Ensure the pins of connectors are not crooked or broken.
  - Make sure the projector is switched on.
- ?** Image is out of focus
  - Adjust the Focus Dial.
  - Make sure the projection screen is between the required distance 9.6 to 126.6 inches (0.245 to 3.215 meters) from the projector. See page 5.
- ?** Image is too small or too large
  - Move the projector closer to or further from the screen.
- ?** Image is reversed
  - Select "Source --> Settings --> System Setup --> Projection" from the OSD and adjust the projection direction.

### Audio Problems

- ?** No sound
  - Press the VOLUME + button. (See page 3.)

### Battery Problems

- ?** Battery capacity is low
  - Remove the battery and clean the connectors.
  - The battery is worn out and needs to be replaced. See page 3.
  - The battery may not charge right after the projector is turned off due to the high temperature emitted by the projector.

Message	LED
Operation	
Battery Charging	
Charge Complete	

### LED Indicator

- : Off / ●: Green / : Red

### Message Reminders

- Out of the range
  - High battery consumption
- Please charge the battery. (See page 3)



## COMPATIBILITY MODE

### Timing Table

Mode	Resolution	V-Sync (Hz)
VGA	640x480	60
	800x600	60
	1024x768	60
	1280x720	60
Composite Component HDMI	480i / 480P	60
	576i / 576P	50
	720P	50 / 60
	1080i	50 / 60

### Multimedia Format: Photo

File Format	File Extension
JPG JPEG	*.jpg, *.jpeg

### Multimedia Format: Audio

File Format
AAC, MP3, PCM, ADPCM, WMA, OGG

### Multimedia Format: Video

File Format	Video Format	Max Res.	Profile
AVI, MOV, MP4, 3GP	H.264	720X480 30fps or 720x576 25fps	Baseline
AVI	MPEG4		Simple Profile
AVI	Xvid		Baseline
AVI	MJPEG	640X480 30fps	Baseline

### <Note>

- Video format does not support content with B-Frame function.
- Please use Arcsoft MediaConverter to convert video and PowerPoint files.

## Free Manuals Download Website

<http://myh66.com>

<http://usermanuals.us>

<http://www.somanuals.com>

<http://www.4manuals.cc>

<http://www.manual-lib.com>

<http://www.404manual.com>

<http://www.luxmanual.com>

<http://aubethermostatmanual.com>

Golf course search by state

<http://golfingnear.com>

Email search by domain

<http://emailbydomain.com>

Auto manuals search

<http://auto.somanuals.com>

TV manuals search

<http://tv.somanuals.com>