

**Wired / Wireless IR IP Camera**

**ICA-108 / ICA-108W**

**Quick Installation Guide**

# Table of Contents

Chapter 1. Introduction.....	3
1.1 Before Installation.....	3
1.2 System Requirements .....	3
1.3 Package Content.....	3
Chapter 2. Physical Installation .....	4
Chapter 3. IP Wizard .....	5
3.1 Installation.....	5
3.2 Wizard function .....	8
3.3 Username and Password.....	9
Chapter 4. Cam Viewer Installation .....	10
Appendix A: Feature Listing for Cam Viewer .....	14
Appendix B: Suggest Hardware / System Requirement .....	15
Ordering Information for Cam Viewer Pro .....	15
Further Configuration .....	15

## Chapter 1. Introduction

Thank you for purchasing the ICA-108/ICA-108W. It is versatile and high image solution of surveillance application for day and night. The ICA-108/ICA-108W is also a stand-alone camera system with a built-in processor and web server that provides highest quality video and system performance.

### 1.1 Before Installation

Before installation, please be sure to read this quick installation guide and user's manual (CD) carefully to complete machine installation.

### 1.2 System Requirements

Network Interface	10/100MBase-TX Ethernet, IEEE802.11b/g (ICA-108W only)
Monitoring System	Recommended for Internet Explorer 6.0 or later
System Hardware	<ul style="list-style-type: none"><li>• CPU: Pentium 4, 1.5GHz or above</li><li>• Memory Size : 512 MB (512 MB or above Recommended)</li><li>• VGA card resolution : 1024 x 768 or above</li><li>• <b>Network bandwidth: In VGA resolution mode, minimum upload bandwidth is 1Mbps.</b></li></ul>

### 1.3 Package Content

ICA-108/ICA-108W x 1

Power Adapter x 1

Wall Mount Accessories x 1

External Antenna x 1 (ICA-108W only)

CD Disk x 1

Quick Installation Guide x 1

## Chapter 2. Physical Installation

### 1. Connect an Ethernet cable

Connect the LAN cable on the ICA-108/ICA-108W to the network device (hub or switch).

### 2. Attach the antenna (ICA-108W only)

Finds antenna in accessory and attaches the antenna to the ICA-108W SMA connector.

### 3. Check the LED (Front Panel)

The LED is defined to identify LAN/WLAN connection type. When LAN port is connected, the LED will be green. For WLAN model, if LAN ported is connected, the LED will be green; if LAN cable is removed; the ICA-108W will change to WLAN connection and LED change to orange color.

### 4. Place the ICA-108/ICA-108W on the table or fix it onto ceiling or wall

Use screws to fix the ICA-108/ICA-108W onto the ceiling or wall. You could also put the ICA-108/ICA-108W in the table directly.

### 5. Attach the power supply

Plug in power adapter and connect to power source. After power on, ICA-108/ICA-108W will start to operate.



Note

Only use the power adapter supplied with ICA-108/ICA-108W. Otherwise, the product may be damaged

## Chapter 3. IP Wizard

This chapter shows how to quick set up your ICA-108/ICA-108W. The ICA-108/ICA-108W is with the default settings. However to help you find the networked camera quickly the windows utility-IP Wizard can search the cameras in the network that shall help you to configure some basic setting before you started advanced management and monitoring.

### 3.1 Installation



Note

In the installation steps below, this guide use ICA-108 as the example. However, the steps for ICA-108W are similar.

1. Insert the bundled CD into the CD-ROM drive to launch the autorun program. Once completed, a welcome menu screen will appear.
2. Click the "IP Wizard" hyperlink; you will see the InstallShield Wizard dialog box as below.



Note

If the welcome screen does not appear, click "Start" at the taskbar. Then, select "Run" and type "D:\Utility\setup.exe", assume D is your CD-ROM drive.



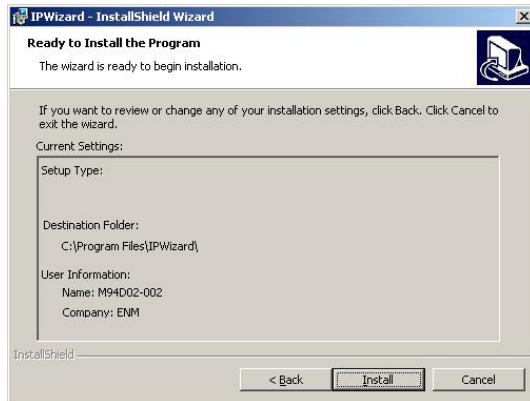
3. The "Welcome to the InstallShield Wizard for IP Wizard" will display on the screen and click "Next" to continue.



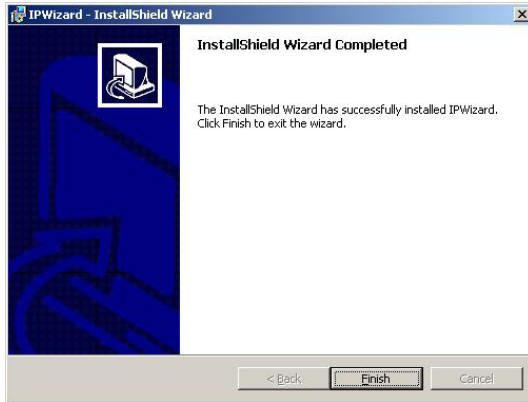
- Please click "Next" to install with original settings, or you may click "Change..." button to modify the install folder then press "Next" to continue.



- Please click "Install" to start the installation.



6. Please click "Finish" to complete the installation



7. Please double-click the utility icon  on the desktop then you will see the ICA-108 utility.

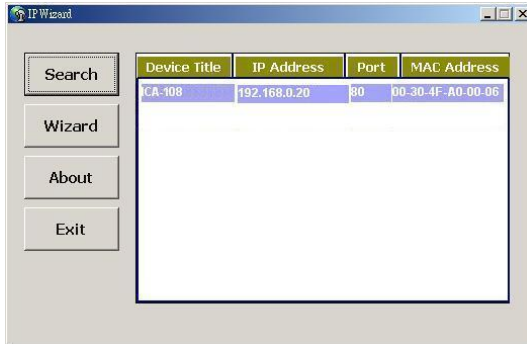
8. Press "Search" button. IP Wizard will list all IP Cameras in your LAN environment:



## 3.2 Wizard function



Please select your ICA-108 and press "Wizard". The utility featured of "Wizard" function to help user to initial ICA-108. User can setup IP address, username and password step by step.



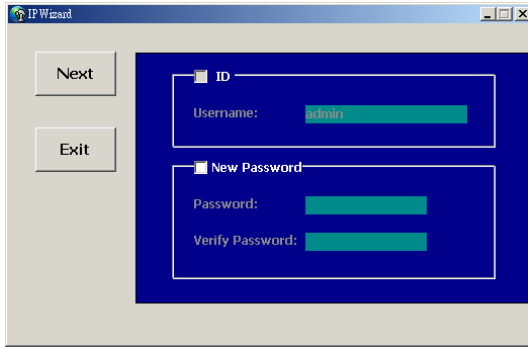
Please enter User Name and Password. Default Username is: admin, leave password blank. Then click "Submit".



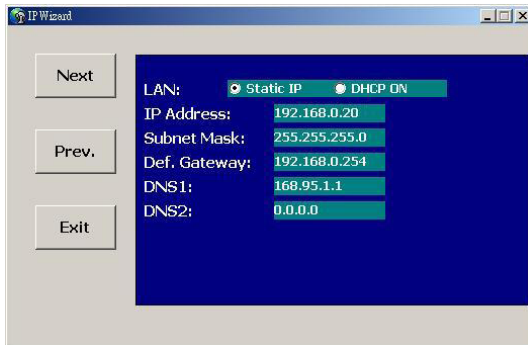


### 3.3 Username and Password

You may change the ID and assign a new password to your ICA-108 or keep the original and press "Next" to continue.



As below, you can select "Static IP" and enter the IP settings. Or select "DHCP ON" when there is a DHCP server in your network.



Note

If no IP address is assigned after 30 seconds, ICA-108/ICA-108W will use its default address 192.168.0.20.

User may open the web browser, and key in the IP address (for example: <http://192.168.0.20>, the default IP address) in the address field to login web configuration page and refer to the User's manual in the bundled CD disk for more configuration.

## Chapter 4. Cam Viewer Installation

This chapter will guide you to install the central management software. The ICA-108/ICA-108W can be managed through its web interface. However, to central control, manage or record the cameras installed in the network Cam Viewer, the windows-based central management software are required.



Note

The Cam Viewer Pro 30 days trial version installation steps are similar. Below is the installation of Cam Viewer Lite.

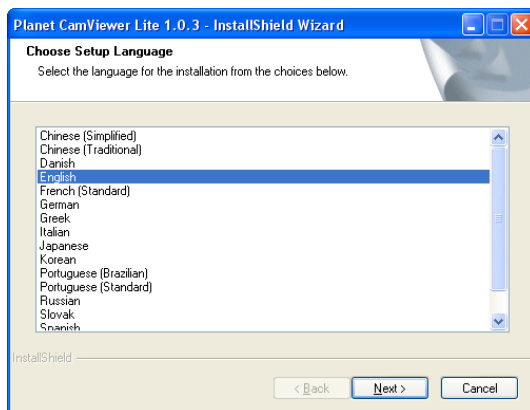
1. Insert the bundled CD disk into the CD-ROM drive to launch the autorun program. Once completed, a welcome page will appear in IE. Click the "Cam Viewer Lite" hyperlink, the below InstallShield Wizard dialog box will appear.



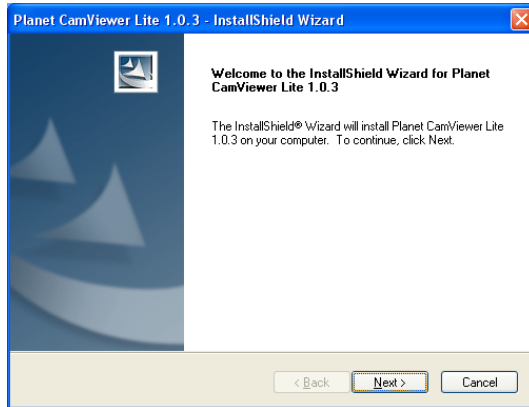
Note

If the welcome screen does not appear, click "Start" at the taskbar. Then, select "Run" and type "D:\Cam Viewer Lite\setup.exe", assume "D" is your CD-ROM drive.

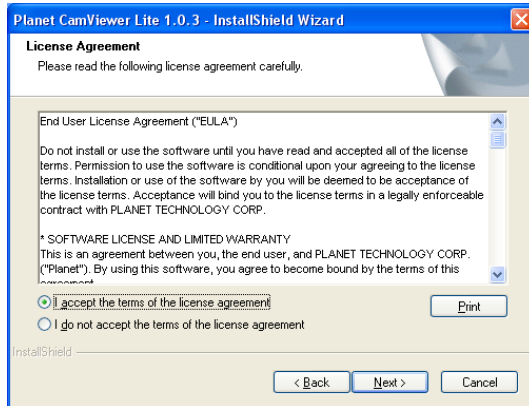
2. Selects the language which you want, Cam Viewer is current including fifteen languages. Please select one of the languages and click "Next" to continue.



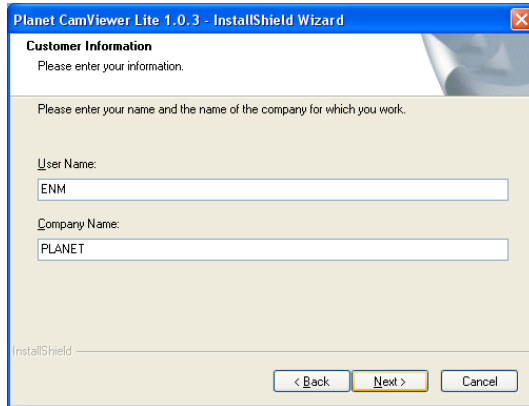
3. The welcome screen will display on the screen, please click "Next".



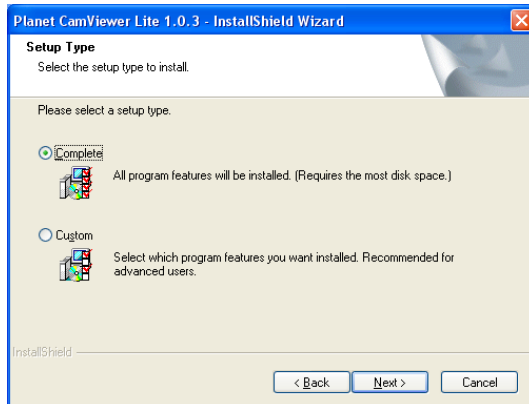
4. Please read the license agreement and then check "I accept the terms of the license agreement" if you are agreed and click "Next" to continue the installation



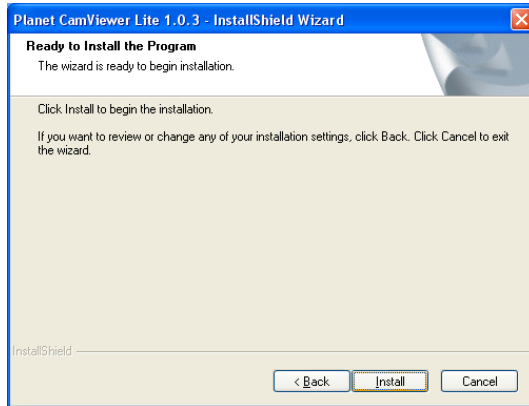
5. Please key in user name and company name for which you want and click "Next" to continue installation.



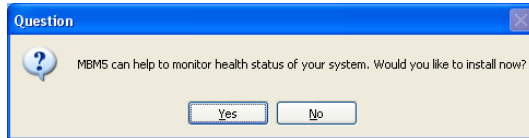
6. Check the option "Complete" – all program features will be installed (Requires the most disk space) and click "Next" to continue installation.



7. "Ready to Install the Program" will appear to prompt you to start the installation. Please click "Install" to start.



8. Please click "No" to finish the Cam Viewer Lite installation.



Note

In above step, when Cam Viewer works with MBM5 (Motherboard Monitor 5), Cam Viewer will display CPU temperature and fan speed. Please click "Yes" if you need this function and refer to the manual of Cam Viewer CD disk for complete installation.

Now, you can central manage all the ICA-108/ICA-108W installed in your network. Please refer to the Cam Viewer guide in the CD-ROM for more.

## Appendix A: Feature Listing for Cam Viewer

Software Version	Cam Viewer Lite (Free Bundle version)	Cam Viewer Pro (30-day Trial version)*
IP Camera Input	32	16 / 32 / 64
Dual Monitor	-	V
Smart Guard	-	V
I/O Device	V	V
Hotline	-	V
Address Book	-	V
Log Viewer	Unusual event System log	Unusual event System log Counting application
Counting Application	-	2 way counting
Remote Playback Server	-	Unlimited
Concurrent Playback	1 Channel	16 Channels
Counting Function	-	V
Smart Search	General Motion	General Motion Missing Object Foreign Object Lose Focus Camera Occlusion
Remote Live Viewer	1 Channel	16 Channel

\*Remark: Refer to Appendix B for more

## Appendix B: Suggest Hardware / System Requirement

Total FPS	~600	600~480	480~240	240~120	120~
CPU	Intel Core 2 Duo QX6800	Intel Core 2 Duo E6600	Intel Pentium D 930	Intel P4 3.0 GHz	Intel P4 2.8 GHz
RAM	4 GB	2 GB	2 GB	1 GB	1 GB
Chipset of Motherboard	Intel 946 or 965 chip, Intel Chipset recommended				
VGA Card	ATI Radeon 9200, nVIDIA GeForce FX-5200, Intel 945/965 or above				
Ethernet	100 Base-TX or Above, Gigabit LAN recommended				
Hard Disk	160 GB or above				
O.S.	Windows 2000 / XP / 2003				

**Total FPS:** Means all the cameras will spend how many frames when this software works. Suppose there are 10 cameras, each one will work with 30fps; the total fps should be 300fps.

### Ordering Information for Cam Viewer Pro

Model	Description
CVP-4	4-Channel Cam Viewer Professional
CVP-8	8-Channel Cam Viewer Professional
CVP-16	16-Channel Cam Viewer Professional
CVP-32	32-Channel Cam Viewer Professional
CVP-64	64-Channel Cam Viewer Professional

### Further Configuration

If you want to configure more detail settings of ICA-108/ICA-108W, please refer to the user manual in the CD disk.

This page is intentionally left blank



## Free Manuals Download Website

<http://myh66.com>

<http://usermanuals.us>

<http://www.somanuals.com>

<http://www.4manuals.cc>

<http://www.manual-lib.com>

<http://www.404manual.com>

<http://www.luxmanual.com>

<http://aubethermostatmanual.com>

Golf course search by state

<http://golfingnear.com>

Email search by domain

<http://emailbydomain.com>

Auto manuals search

<http://auto.somanuals.com>

TV manuals search

<http://tv.somanuals.com>