



Single-bay NAS Server

NAS-1100

User's Manual



Copyright (C) 2004 PLANET Technology Corp. All rights reserved.

The products and programs described in this User's Manual are licensed products of PLANET Technology. This User's Manual contains proprietary information protected by copyright, and this User's Manual and all accompanying hardware, software, and documentation are copyrighted.

No part of this User's Manual may be copied, photocopied, reproduced, translated, or reduced to any electronic medium or machine-readable form by any means by electronic or mechanical. Including photocopying, recording, or information storage and retrieval systems, for any purpose other than the purchaser's personal use, and without the prior express written permission of PLANET Technology.

Disclaimer

PLANET Technology does not warrant that the hardware will work properly in all environments and applications, and makes no warranty and representation, either implied or expressed, with respect to the quality, performance, merchantability, or fitness for a particular purpose.

PLANET has made every effort to ensure that this User's Manual is accurate; PLANET disclaims liability for any inaccuracies or omissions that may have occurred.

Information in this User's Manual is subject to change without notice and does not represent a commitment on the part of PLANET. PLANET assumes no responsibility for any inaccuracies that may be contained in this User's Manual. PLANET makes no commitment to update or keep current the information in this User's Manual, and reserves the right to make improvements to this User's Manual and/or to the products described in this User's Manual, at any time without notice.

If you find information in this manual that is incorrect, misleading, or incomplete, we would appreciate your comments and suggestions.

Trademarks

The PLANET logo is a trademark of PLANET Technology. This documentation may refer to numerous hardware and software products by their trade names. In most, if not all cases, these designations are claimed as trademarks or registered trademarks by their respective companies.

Revision

User's Manual for PLANET Single-bay NAS Server

Model: NAS-1100

Rev: 1.0 (December, 2004)

Part No. EM-NAS1100

TABLE OF CONTENTS

Chapter 1 Introduction	1
1.1 Package Contents	1
1.2 System Requirements	1
1.3 Features	1
1.4 Specification.....	2
Chapter 2 Hardware Installation.....	3
Chapter 3 Setup Wizard	5
Chapter 4 Configuration	11
4.1 Home.....	11
4.2 Networking.....	13
4.2.1 Host Name Setting	14
4.2.2 IP Address Setting.....	15
4.2.3 Superuser/Password Setting.....	15
4.3 Administration.....	16
4.3.1 System Restart.....	17
4.3.2 HD Format.....	17
4.3.3 Factory Default Reset	18
4.3.4 Firmware Upgrade.....	19
4.3.5 System Time.....	19
4.3.6 Character Set	20
4.4 Share.....	20
4.4.1 User Configuration	21
4.4.1.1 Modify Users	22
4.4.1.2 Add User.....	23
4.4.1.3 Delete User	24
4.4.2 Folder Configuration.....	25
4.4.2.1 Modify Folder.....	25
4.4.2.2 Add Folder	26
4.4.2.3 Delete Folder.....	28
4.5 FTP	28
4.5.1 FTP Configuration	29

4.5.2 FTP Password.....	30
Chapter 5 Troubleshooting.....	31

Chapter 1 Introduction

The typical installation of PLANET NAS-1100 can be completed in less than ten minutes without any additional configuration of other servers or clients on your network. With the features of a compact, economical and powerful storage server, the NAS-1100 fits your SOHO (Small Office or Home Office) or personal requirements. It functions as a file / FTP server and provides an easy way for LAN users to backup data or share files through Intranet and Internet. The NAS-1100 is compatible with Microsoft Windows systems, Linux, and MAC network environment and introduces the most simple and user-friendly setup procedure and operation to users.

1.1 Package Contents

Make sure that you have the following items:

- One NAS-1100
- One AC Power Adapter
- One CD-ROM
- One Quick Installation Guide
- One Accessory pack (Rubber Foot and Screws)



Note:

If any of the above items are missing, contact your supplier as soon as possible.

1.2 System Requirements

Before installation, please check the following requirements with your equipment.

- Pentium Based (And Above) IBM-Compatible PC System
- CD-ROM drive
- Windows 98/ME/2000/XP/Server2003 Operating System with TCP/IP protocol

1.3 Features

- Provides a 10/100Mbps Ethernet port (Auto MDI/MDIX) for network connection
- Easy configuration via web interface
- Supports all standard 3.5" IDE HD up to 250GB
- Auto Networking Configuration Utility for Windows OS
- Supports CIFS/SMB for Microsoft Network users to easily retrieve files by using "My Neighborhood"
- Built-in FTP server for user conveniently transfer files
- Compatible with Windows 95 /98 /98SE /NT /Me / 2000 /XP /Server 2003
- Supports hardware/software Reset to Factory Default function
- Firmware upgrade by WEB browser
- Provides three Pre-defined User levels
- Allows up to five online users of Samba (Concurrently connected) and five online FTP users (Concurrently connected)
- Auto-detect HDD for newly installed HDD
- Provides password security for web management & HDD access

1.4 Specification

Support Protocol	TCP/IP, FTP, HTTP, SMB
Standards	IEEE 802.3, IEEE 802.3u
LAN Connector	RJ-45 Interface (10/100Mbps)
LAN Speed	10/100 Mbps at half duplex 20/200 Mbps at full duplex
LEDs	PWR, LNK/ACT. HDD
System Configuration	Windows Base utility Web Browser (Internet Explorer, Netscape)
Dimensions	220 x 60 x 132 mm (W x D x H)
Weight	865g (without HDD)
Operating	Temperature: 0 ~ 40°C Humidity: 10 ~ 95%(non-condensing)
Storage	Temperature: -10 ~ 70°C Humidity: 10 ~ 95%(non-condensing)
Power Adapter	12V DC, 3A
Regulatory	FCC Class B, CE

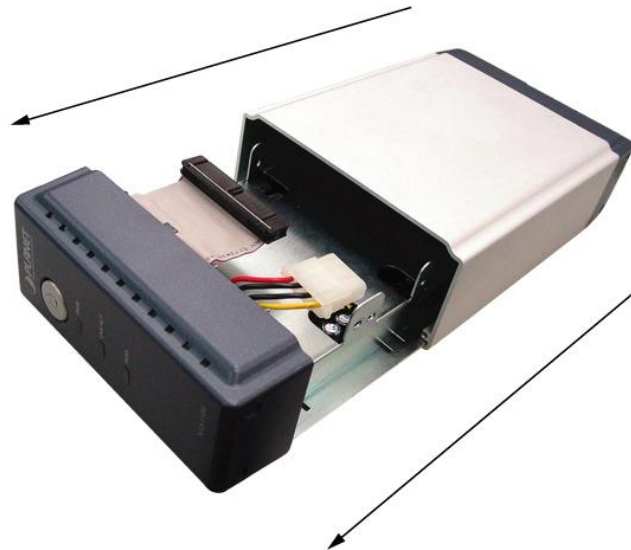
Chapter 2 Hardware Installation

Please refer to the steps below to install your HDD into NAS-1100:

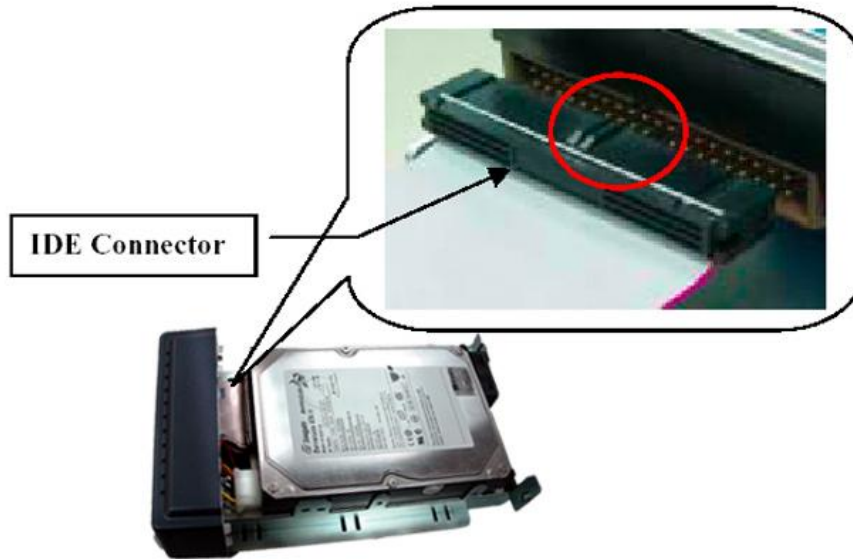
1. Loosening the two screws on the rear panel by screwdriver or hands.



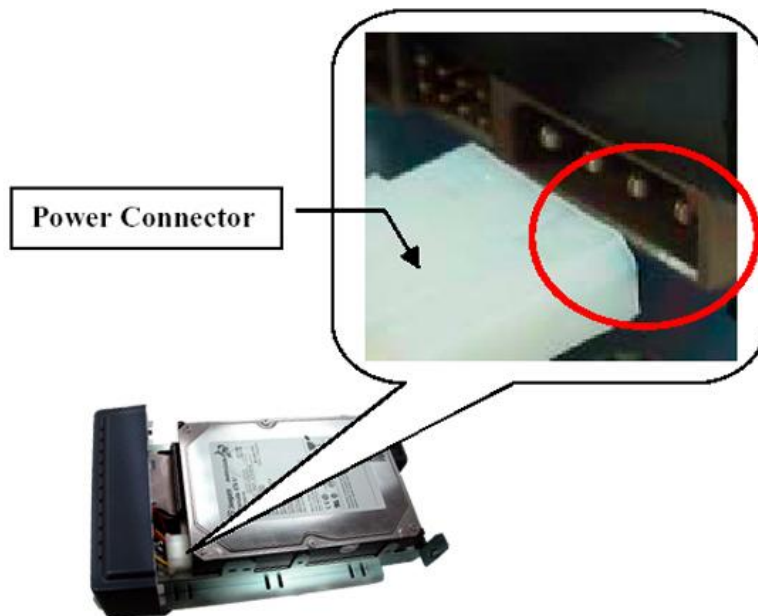
2. Grabbing the front panel and separate the HD holder from case.



3. Your HD jumper should be set to Master. Different Hard Disk has different jumper settings; please refer to your Hard Disk manual for correct setting.
4. Insert the IDE connector into the IDE socket of the Hard Disk. Make sure the pin 1 on the cable is connected to pin 1 on the HD socket. Pin 1 is the red or pink strip on the edge of an IDE cable. The IDE cables are designed so that it will only go in one way, which will correspond to pin 1.



5. Push the power connector into the power socket of HD as shown. The power cable is designed to go in one way, so you shouldn't have any problems.



6. Secure the Hard Disk with the screws we provided.
7. Push the Hard disk and HD holder back into the box and secure it with the two screws.

Chapter 3 Setup Wizard

The Setup Wizard guides you to finish the initial installation of NAS-1100, and the basic configurations for Network. Please follow the steps as below.

1. Insert the CD-ROM into the CD-ROM drive to initiate the autorun program. Once completed a menu screen will appear.
2. Click on "Setup Wizard" hyper link to initiate the program. If the menu screen is not shown, you can click the "Start" button and choose "Run". When the box appears, enter "E:\Utility\setup.exe" (Suppose "E" is your CD-ROM drive). You will see the Welcome screen as below. Please click "Next" to continue.



3. Plug the circle end of power adapter firmly into the rear panel of NAS-1100, and the other end into a power outlet. Press the Power button on NAS-1100 and make sure Power LED is light on.

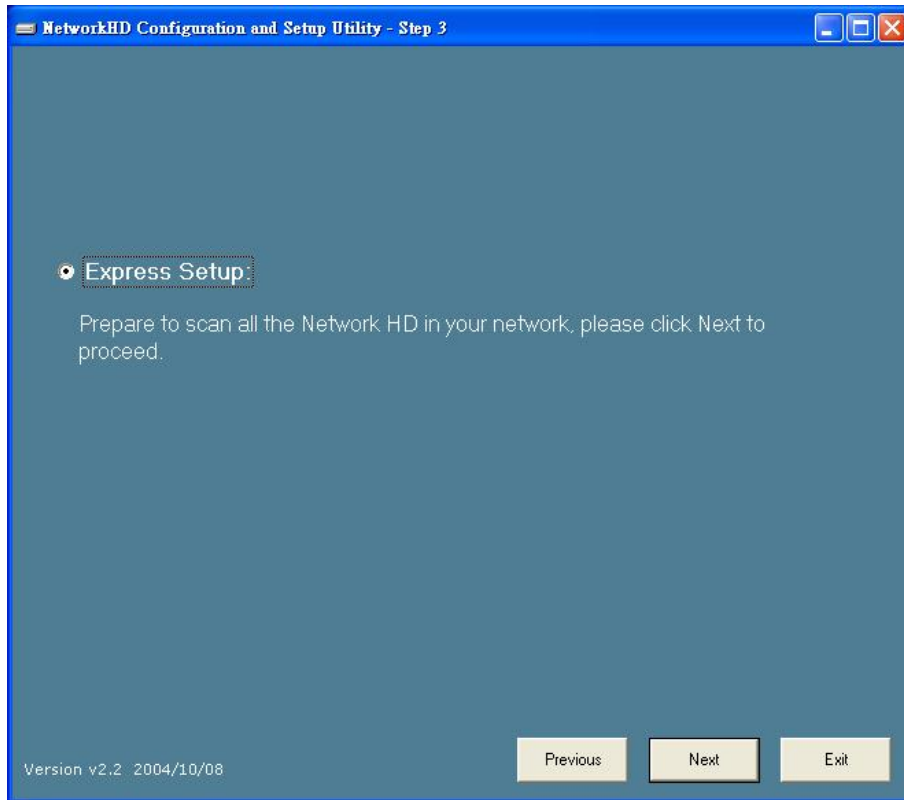


Note: ONLY use the power adapter supplied with the NAS-1100. Otherwise, the product may be damaged.

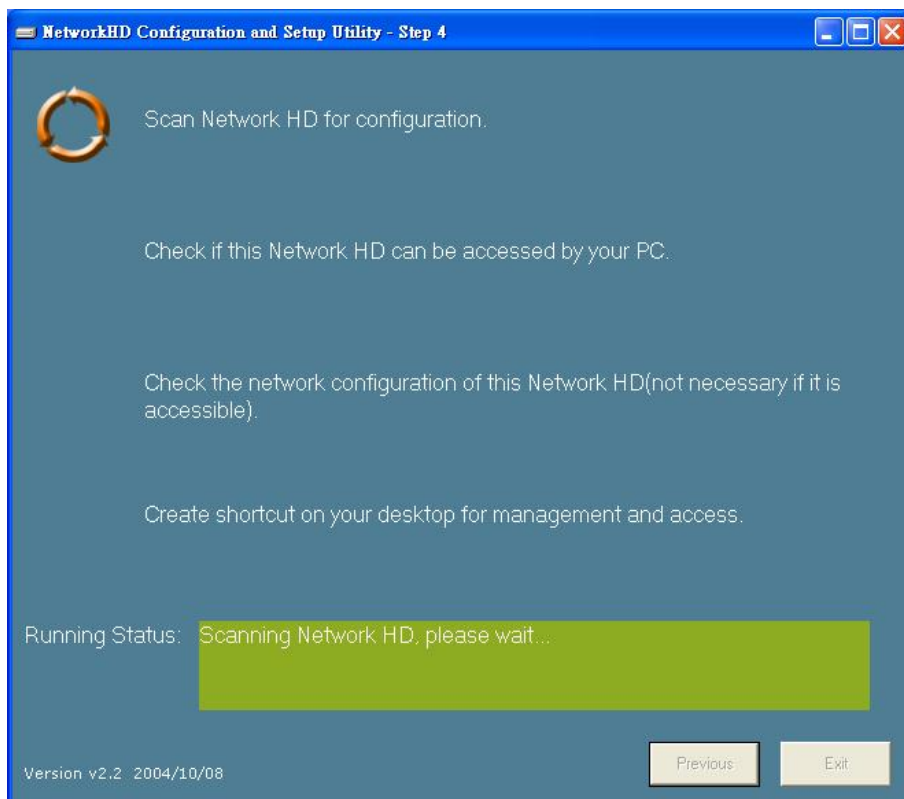
4. Connect NAS-1100 to your switch or hub and make sure the LNK/ACT LED is light on.



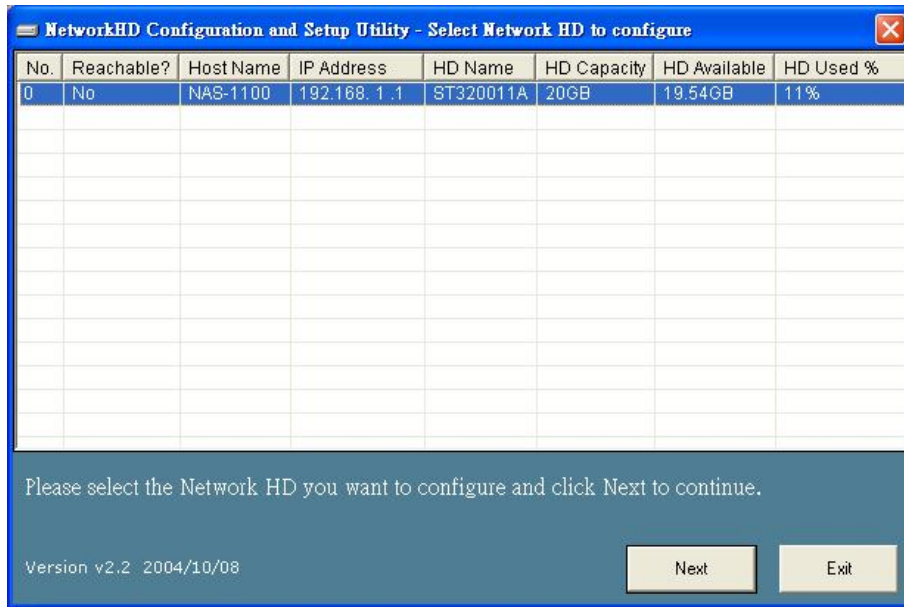
5. Press "Next" to start the scan.



6. The Setup Wizard will scan available NAS-1100 in your network.



- The screen will show you the available NAS-1100. Please select the device you want to setup and click “Next” to continue.

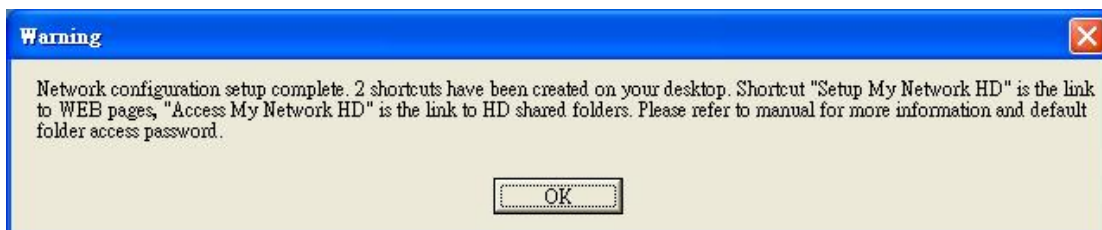


Note: There will be two status of the “Reachable?” field.		
Reachable	Status	Action
Yes	NAS-1100 network setting is compatible with your LAN.	Creating two shortcuts to access and setup the NAS-1100.
No	NAS-1100 network setting is not compatible with your LAN.	Set a new IP address to NAS-1100 and creating two shortcuts to access and setup the NAS-1100.

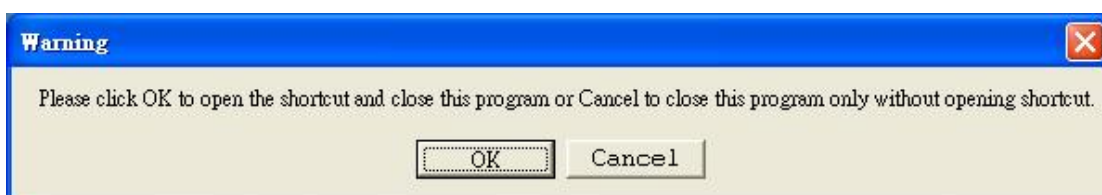
- If the “Reachable” option is “No”, you will see this screen. Please enter the NAS-1100 administrator user name and password and click “Next”. The default username and password are both “admin”.



9. The NAS-1100 installation is completed. This dialog box prompts you that setup wizard will add two shortcuts on you desktop, you can configure more advance settings by click those shortcuts. Please press “OK”.



10. Please click “OK” to open the shortcut or “Cancel” to finish the setup wizard without opening shortcut.



11. You will find two shortcuts on your desktop.



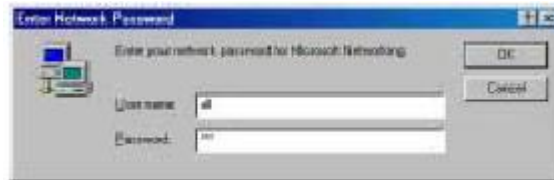
You can start to use NAS-1100 or setup further settings by clicking on the respective buttons.

Note1: the above two shortcuts are created according to current IP address of NAS-1100. If you change the IP of NAS-1100 afterward, the previously created shortcuts are useless. You

must run the Setup Wizard again to create new shortcuts.

Note 2: the Setup Wizard will detect your HD content, but only for the first partition. It is recommended that do not partition the HD.

To use the storage space of NAS-1100, you can double click on the “Access My Network HD - NAS-1100” icon. A dialog box will pop up and ask for username/password.



There are three pre-defined accounts available:

all: able to read and write all folders in NAS-1100

power: able to read and write the folder named “share” only

guest: able to read the folder named “share” only

The passwords of the above accounts are identical with the account names. For example, the password for account “all” is “all”.

Chapter 4 Configuration

The NAS-1100 provides a web-based configuration interface and you can simply access it by double click on the “Setup My Network HD – NAS-1100” icon on desktop. A dialog box will pop up and ask for username/password. The default user name and password are both “admin”.



4.1 Home

On this screen, you can see the general information of your NAS-1100 including Host Name, IP address, and Firmware Version. You can also access other configuration screens here.

PLANET Networking & Communication **Single - bay NAS Server**

Home Networking Administration Share FTP

Status

Host Name: NAS-1100
 IP Address: 192.168.1.1
 Version: v1.00(12-02-2004)

[Click here for more information...](#)

Configuration

Networking
 network setting
 → [Host Name](#) [IP Address](#) [Superuser/Password](#)

Administration
 system setting
 → [Restart System](#) [HD Format](#) [Factory Default Reset](#) [Firmware Upgrade](#) [System Time](#)
[Character Set](#)

Share
 users and folders access setting
 → [User Configuration](#) [Folder Configuration](#)

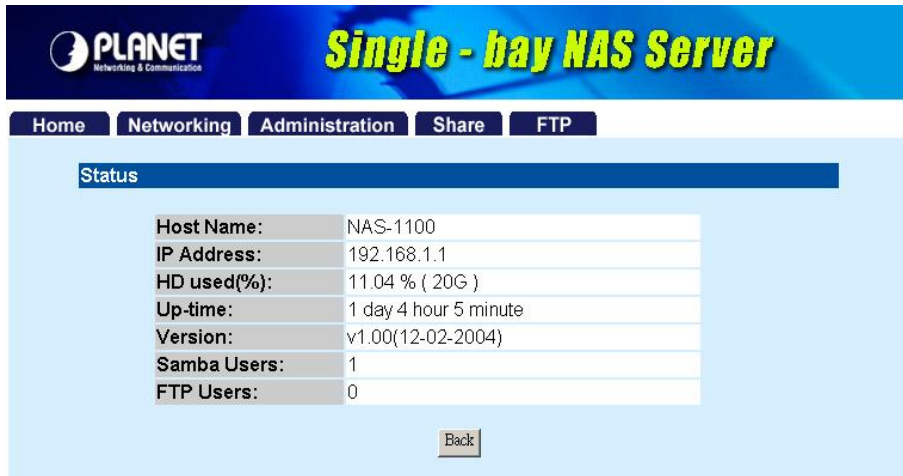
FTP
 FTP login password setting
 → [FTP Configuration](#) [FTP Password](#)

Check and repair MS-DOS file system

The system works normally.

Options	Description
Status	
Host Name	The identification of the NAS-1100 showing on the “My Neighborhood”.
IP Address	IP Address of this NAS-1100.
Version	Firmware version.
Check and repair MS-DOS file system	
Show HDD file system status	<p>When the NAS-1100 does not shut down properly (such as power off the device by unplugging the power adapter), the NAS-1100 will automatically check and repair MS-DOS file system to ensure the system integrity. Please wait for system completing this process.</p> <p>NOTE: the checking time will be different depending on different HDD size. For example, 20GB HDD/ 1 Min, 250GB HDD/ 12Mins. If the NAS-1100 system fails to repair your HDD file system, please unplug the HDD and connect to a desktop PC with Windows OS. Windows will run scandisk to repair your HDD.</p>

If you click on the “Click here for more information...” hyper link, the screen will show you the current device status as below.



Options	Description
Host Name	The identification of the NAS-1100 showing on the "My Network Neighborhood".
IP Address	IP Address of this NAS-1000.
HD used (%)	The usage percentage of HDD.
Up-time	The estimate time of system operating period.
Version	Current firmware version.
Samba Users	The number of users who is accessing the NAS-1100 from "My Network Neighborhood". You can have max five online users to access NAS-1100 at the same time.
FTP Users	The number of users who is connected to NAS-1100 by FTP session. You can have max five online users to access NAS-1100 at the same time.

4.2 Networking

In this option, you can setup the networking configurations of NAS-1100.

PLANET Networking & Communication **Single - bay NAS Server**

Home Networking Administration Share FTP

Networking

- [Host Name Setting](#)
PLANET NAS-1100 Host Name Setting
- [IP Address Setting](#)
PLANET NAS-1100 IP Address Setting
- [Superuser/Password Setting](#)
PLANET NAS-1100 Superuser/Password Setting

4.2.1 Host Name Setting

PLANET Networking & Communication **Single - bay NAS Server**

Home Networking Administration Share FTP

Networking - Host Name

Notes:

1. Host Name & Work group are limited to 15 characters.
Description is limited to 48 characters.
2. Space character, control character and " " are not allowed.

Host Name:

Work Group:

Description:

Apply Cancel Back

Parameters	Description
Host Name	Identification of NAS-1100 represents on "My Network Neighborhood".
Work Group	The name of the workgroup which NAS-1100 is located.
Description	Brief description of the NAS-1100.

4.2.2 IP Address Setting

PLANET Networking & Communication **Single - bay NAS Server**

Home Networking Administration Share FTP

Networking - IP Address

Please provide IP Address, Subnet Mask and Gateway.

IP Address:	<input type="text" value="192.168.1.1"/>
Subnet Mask:	<input type="text" value="255.255.255.0"/>
Gateway:	<input type="text" value="192.168.1.254"/>
DNS Server:	<input type="text" value="168.95.1.1"/>

Apply Cancel Back

Parameters	Description
IP Address	Designate the NAS-1100's IP Address. This IP Address should be unique in your network. The default IP Address is 192.168.1.1 .
Subnet Mask	Specify a Subnet Mask for your LAN segment. The default value is 255.255.255.0 .
Gateway	Specify the gateway IP in your network.
DNS Server	This is the ISP's DNS server IP address that they gave you; or you can specify your own preferred DNS server IP address.

4.2.3 Superuser/Password Setting

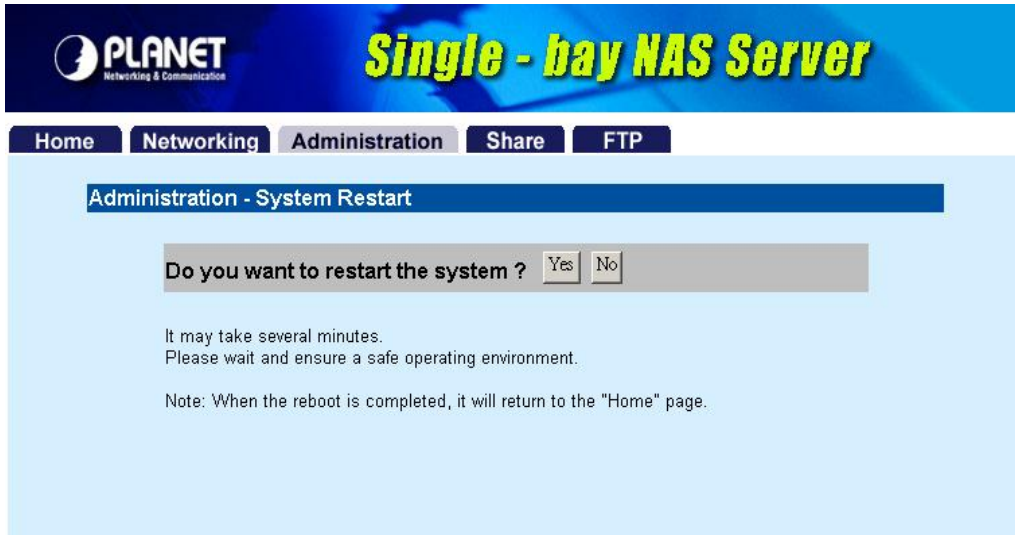
This page allows you to change the username and password which are used to access the web interface of NAS-1100. Please do not confuse this screen with the following "Share" screen. The user account created in "Share" screen is for access the storage space of NAS-1100. You should not grant web access privilege to common users.

Parameters	Description
Superuser name	The administrative user name to access the web interface of NAS-1100.
Old Password	Enter the old password here.
New Password	Enter the new password here.
Confirm Password	Please enter the new password here again to confirm.

4.3 Administration

In this screen, you can manage the NAS-1100 with some useful tools.

4.3.1 System Restart

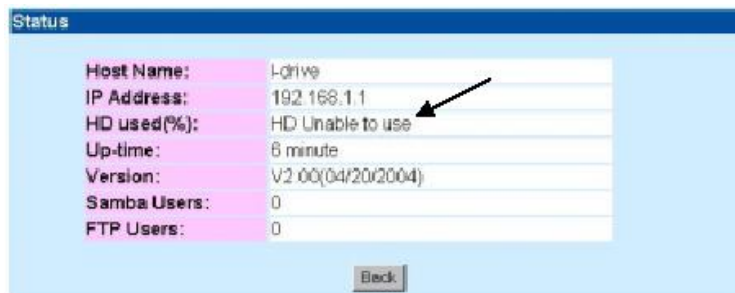


Parameters	Description
Do you want to restart this system?	If you want to restart this NAS-1100, please press "Yes", or press "No" to back to this system? pervious page.

4.3.2 HD Format

When you see this message "HD Unable to use" showing on the "HD used (%)", it means either your hard disk is a brand new unformatted one or its format is not FAT32. It would be better format this hard disk or replace it with another one.

Caution: All partitions on your HD will be format and all your DATA will be erased.



Administration - HD Format

Do you want to format HD ?

It supports only FAT32 and may take several minutes.
Please wait and ensure a safe operating environment.

Note: When the HD format is completed, it will return to the "Home" page.

Parameters	Description
Do you want to format HD?	If you want to format your HD, please press "Yes", or press "No" to back to previous page.

Note: Please wait until the format process completed. Do not power off the system or close the browser. After the format process complete, **the system will restart automatically.**

4.3.3 Factory Default Reset

Administration - Factory Default Reset

Do you want to reset to factory default ?

It may take several minutes. Current configuration will be lost.
Please wait and ensure a safe operating environment.

Note: When the reset is completed, it will return to the "Home" page.

Parameters	Description
Do you want to reset to factory default?	If you want to reset NAS-1100 back to factory default settings. Please press "Yes", or press "No" to back to previous page.

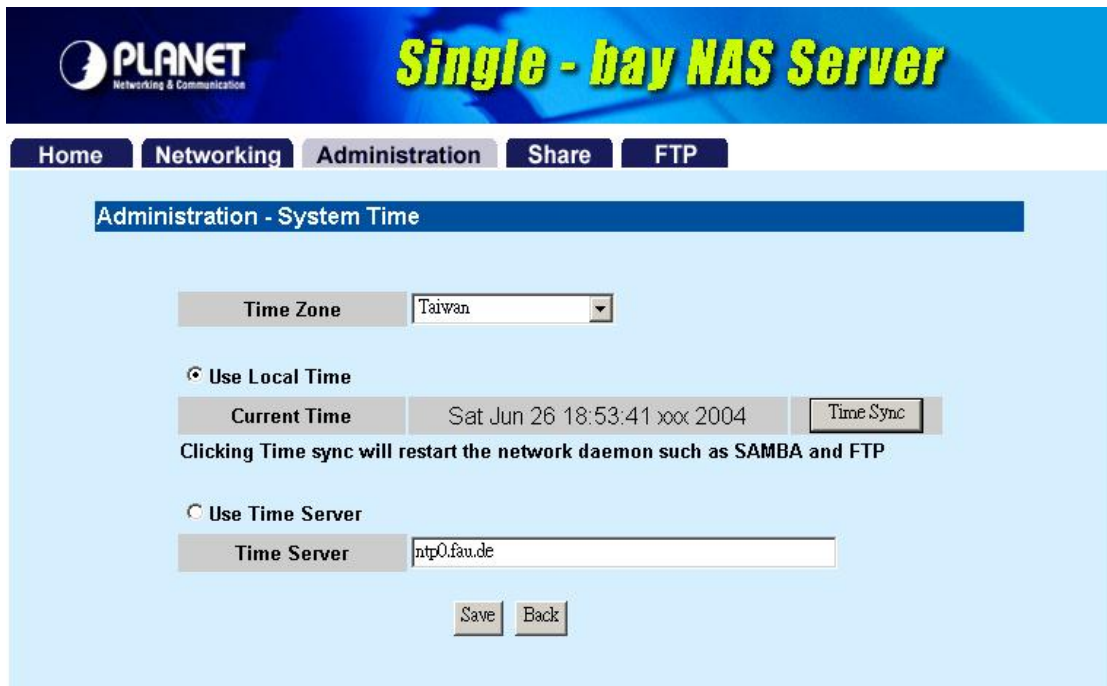
Note: besides software reset, you can also press the DEFAULT button on the rear panel of NAS-1100 for 10 second. And then wait for a while for NAS-1100 restart with factory default settings.

4.3.4 Firmware Upgrade



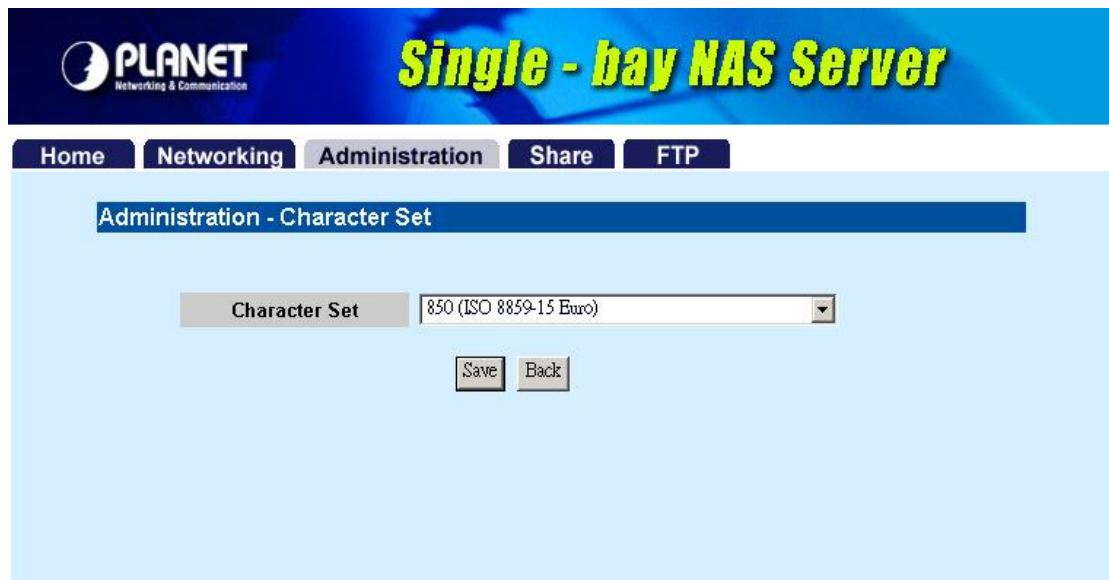
Parameters	Description
Firmware upgrade	If you have the latest firmware of NAS-1100, you may enter the firmware path into this field or press “ Browse... ” to find out the firmware location and press “ Apply ” to upgrade. If the firmware location is wrong, please press “ Reset ” to enter again. If you don’t want to upgrade, press “ Back ” to previous page.

4.3.5 System Time



Parameters	Description
Time Zone	Please select the time zone of your country
Use Local Time	Press 'Time Sync" button, the NAS-1100 will synchronize its time with your PC. Before this procedure, please make sure the time on your PC is also correct.
Use Time Server	If this NAS-1100 is connected to Internet already, you may select this option to set it check the system time with Internet time server. You can change the time server address or keep use the default setting and click "Save" button to apply.

4.3.6 Character Set



Parameters	Description
Character Set	Please click the pull-down list and select correct character set for your OS. If the wrong character set is using, it may cause the incorrect display of the stored file names.

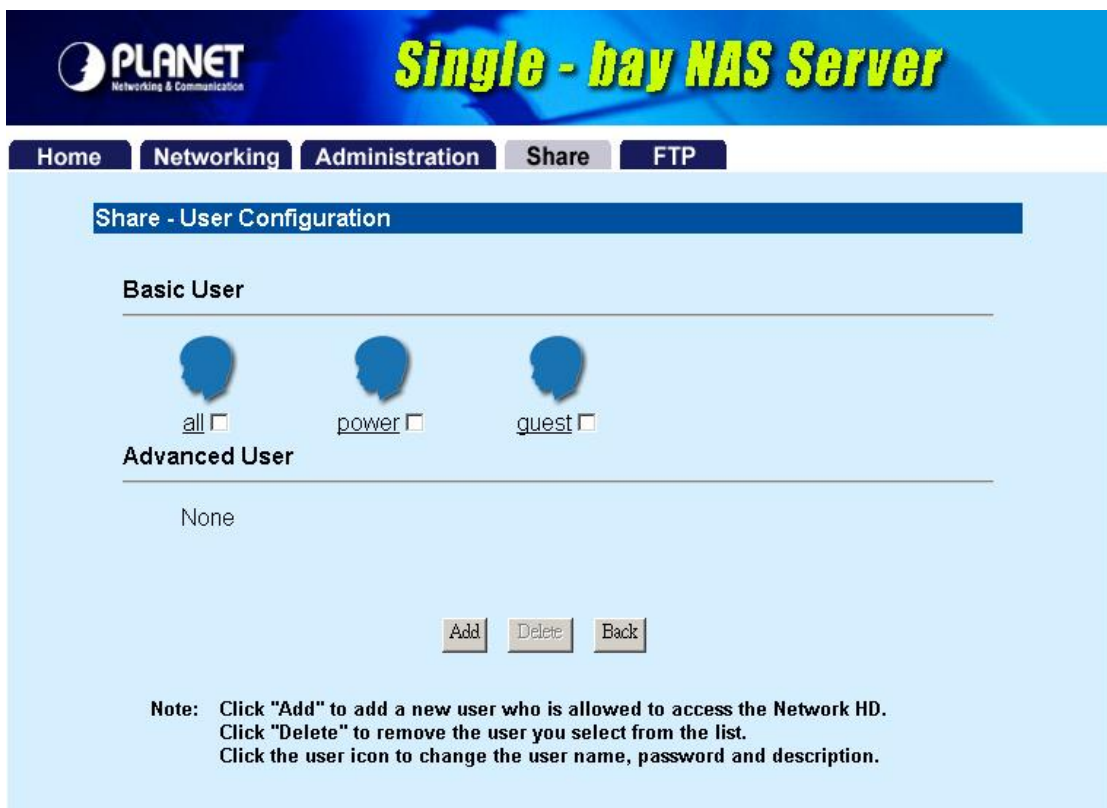
4.4 Share

In this option, you can set the user and folder configuration for user login and access data.



4.4.1 User Configuration

In this screen, you can add/Delete/modify the user account. Before operate, please make sure the installed HD was formatted. If the installed HD does not format yet, the operation in this page may be wrong.



4.4.1.1 Modify Users

If you want to modify the existing user, please click the user icon in Basic User or Advanced User field. Then you will see the screen below.

The screenshot shows the PLANET Single-bay NAS Server administration interface. The page title is "Share - User - 'all' configuration". The navigation menu includes Home, Networking, Administration, Share, and FTP. The configuration form contains the following fields:

- User Name: all (with a "Change Name" button)
- New Password: [text input]
- Confirm Password: [text input]
- User Description: all account
- FTP Access: Yes No
- Accessed Level: Supervisor General User
- FTP Folder: Share (dropdown menu)

At the bottom of the form are three buttons: Apply, Undo, and Back.

Parameters	Description
User Name	For existing user, you may click "Change Name" button to change the user name.
New Password	If you want to set a new password of this user, please enter the new password here.
Confirm Password	Please enter the new password here again.
User Description	Please enter a simple description of this user.
FTP Access	Allow this user to access NAS-1100 via FTP protocol or not.
Access level	NAS-1100 provides two Access levels to all the users, Supervisor and General User. The user level has different accessibility.
FTP Folder	When the user is in General User level, you have to set the folder from the pull-down list. When this user access to NAS-1000 via FTP protocol, he will be directed to the specified folder.

Note: NAS-1100 provides three Basic User accounts. For those accounts, the default password is the same as their user name.

4.4.1.2 Add User

If you want to add a new user, please click the “Add” button on the screen in section 4.4. Then you can see the screen below for adding new user.

PLANET Networking & Communication **Single - bay NAS Server**

Home Networking Administration Share FTP

Share - Add User

Notes:
If the user can use FTP at the same time, don't use username as your password.

User Name:

New Password:

Confirm Password:

User Description:

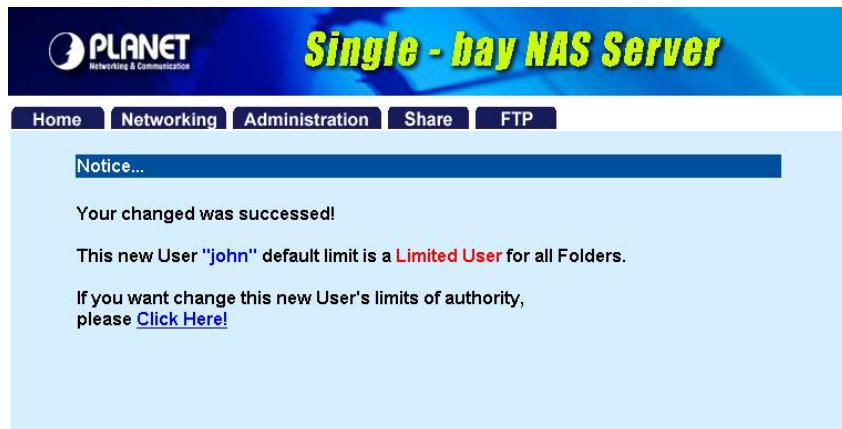
FTP Access: Yes No

Accessed Level: Supervisor General User

FTP Folder:

Apply Undo Back

Parameters	Description
User Name	Please enter the name for this user. .
New Password	Please enter a password of this user.
Confirm Password	Please enter the password here again.
User Description	Please enter a simple description of this user.
FTP Access	Allow this user to access NAS-1100 via FTP protocol or not.
Access level	NAS-1100 provides two Access levels to all the users, Supervisor and General User. The user level has different accessibility.
FTP Folder	When the user is in General User level, you have to set the folder from the pull-down list. When this user access to NAS-1000 via FTP protocol, he will be directed to the specified folder.
Apply	After finish the user configuration, please press this button. You will see a screen to prompt you this user is a limited user for all folder. You may click “Click Here!” hyper link and refer to section 4.4.2 to configure the folder configuration for this user.

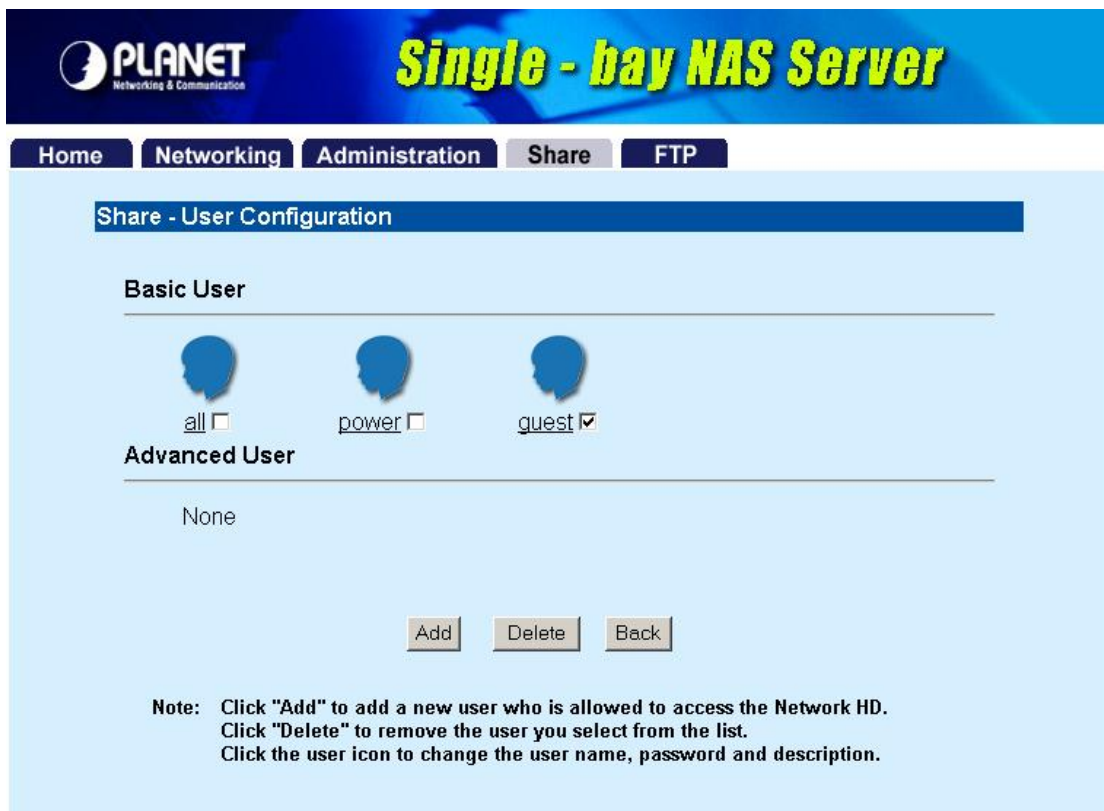


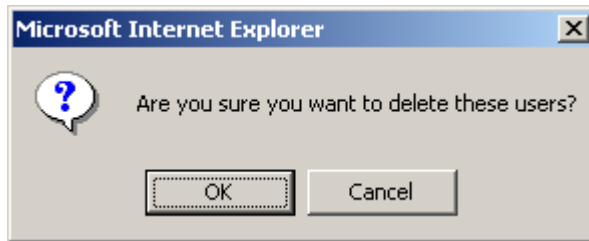
Undo When you want to clear the settings, you can press this button.

Back Press this button for back to previous page.

4.4.1.3 Delete User

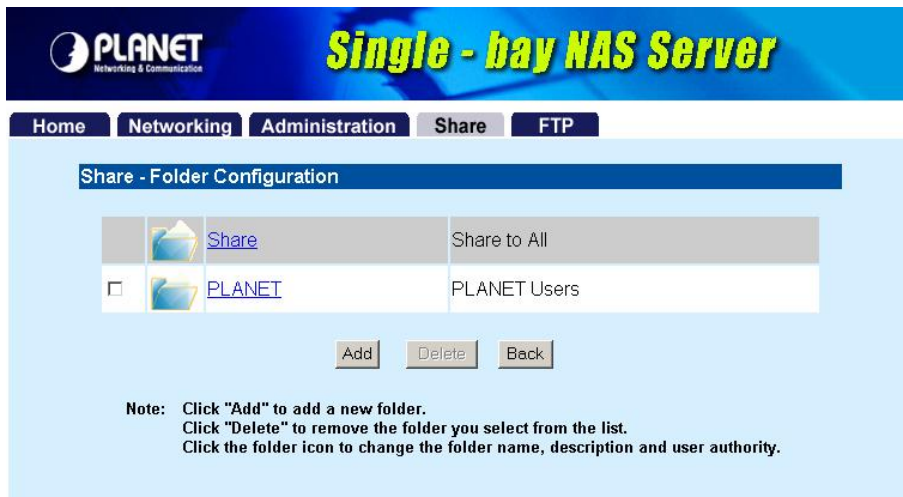
If you want to delete the user account, please click the check box under the user name in the User Configuration screen, you may see the "Delete" button become available. When you press "Delete" button, you may see a dialog box to prompt you the user will be deleted, press "Yes" to delete this user. If you want to delete two or more users, you can click the check box of those users to delete them at the same time.





4.4.2 Folder Configuration

In this screen, you can add/delete/modify the shared folder.



4.4.2.1 Modify Folder

If you want to modify the folder configuration, please click the folder icon. Then you will see the screen below.



Parameters	Description
Change Name	If you want to change the folder name, please press this button. After press this button , you will see the screen below. Please press “Apply” to save the settings.



NOTE: The default folder “Share” can’t be changed.

Change Description	If you want to change the folder description, please press this button. Please press “Apply” to save the settings.
--------------------	--



Please set user's limit for this folder You may set the privilege for each user or set the same setting to all users by selecting upper options.

Apply Press this button to save the changes.

Undo Click to clear the current settings.

Back Press to back to pervious page.

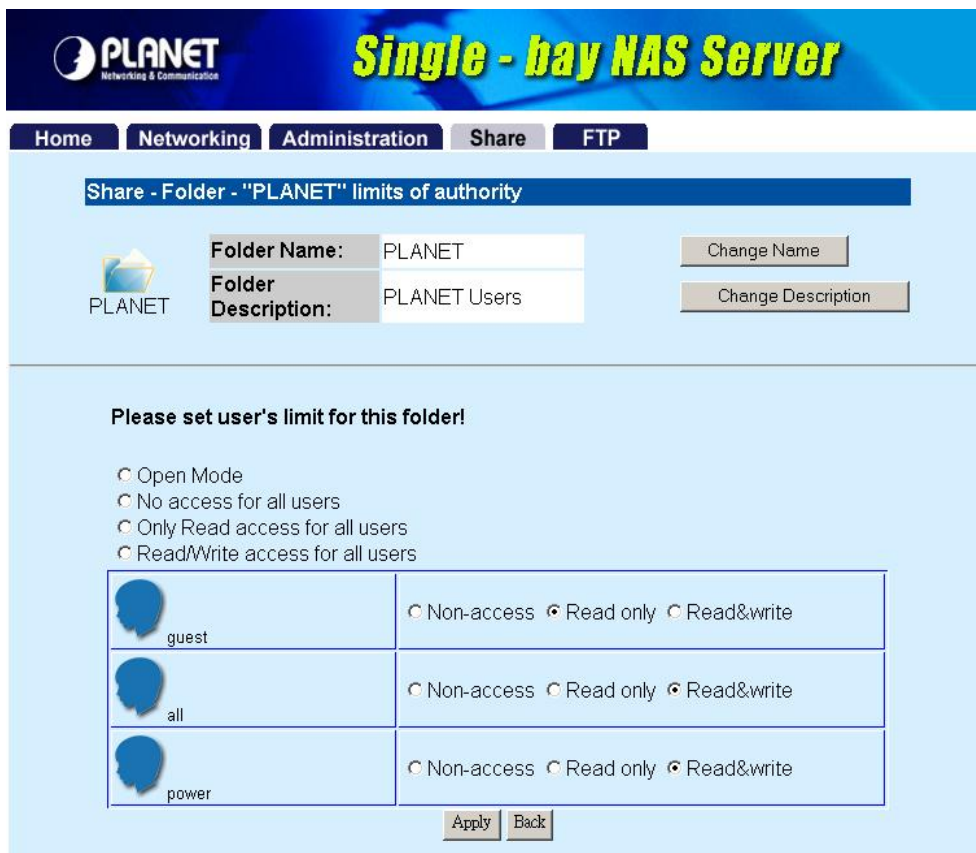
4.4.2.2 Add Folder

If you want to add a new share folder, you may press the “Add” button in the screen above. Then you will see this Add Folder screen.



Parameters	Description
Folder Name	Please set a name to this share folder. The folder name will be shown when the user access NAS-1100.
Folder Description	Please set a simple description for this folder.
Apply	Please press this button to create this new folder.
Undo	Click to clear the current settings.
Back	Press to back to pervious page.

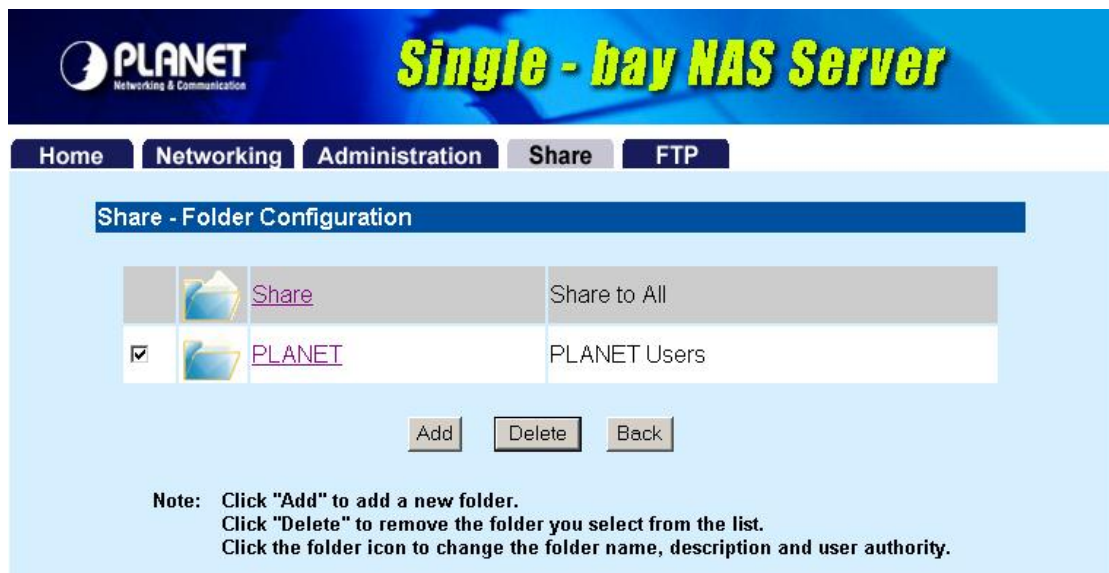
After press "Apply", you may see this screen to ask you to define the user accessibility.



Parameters	Description
Change Name	If you want to change the folder name, please press this button.
Change Description	If you want to change the folder description, please press this button.
Please set user's limit for this folder	You may set the privilege for each user or set the same setting to all users by selecting upper options.
Apply	Please press this button to create this new folder.
Back	Press to back to pervious page.

4.4.2.3 Delete Folder

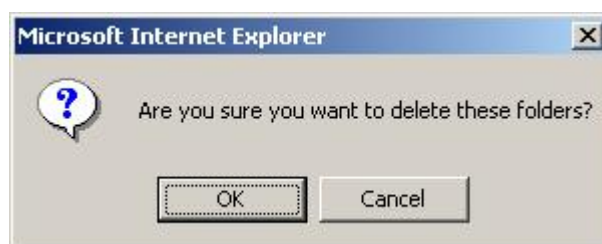
Click the check box in front of the folder name, then the **"Delete"** button will become available. Please click this button to delete the folder you selected. You will see a dialog box appear to prompt the folder will be deleted, press **"OK"** to continue.



Share - Folder Configuration

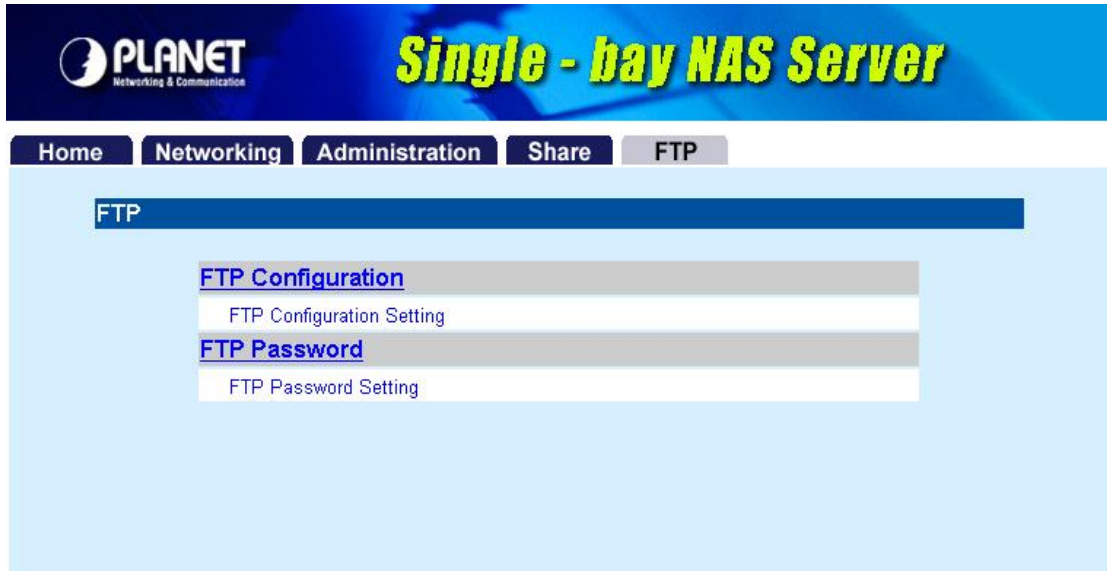
	Share	Share to All
<input checked="" type="checkbox"/>	PLANET	PLANET Users

Note: Click "Add" to add a new folder.
Click "Delete" to remove the folder you select from the list.
Click the folder icon to change the folder name, description and user authority.



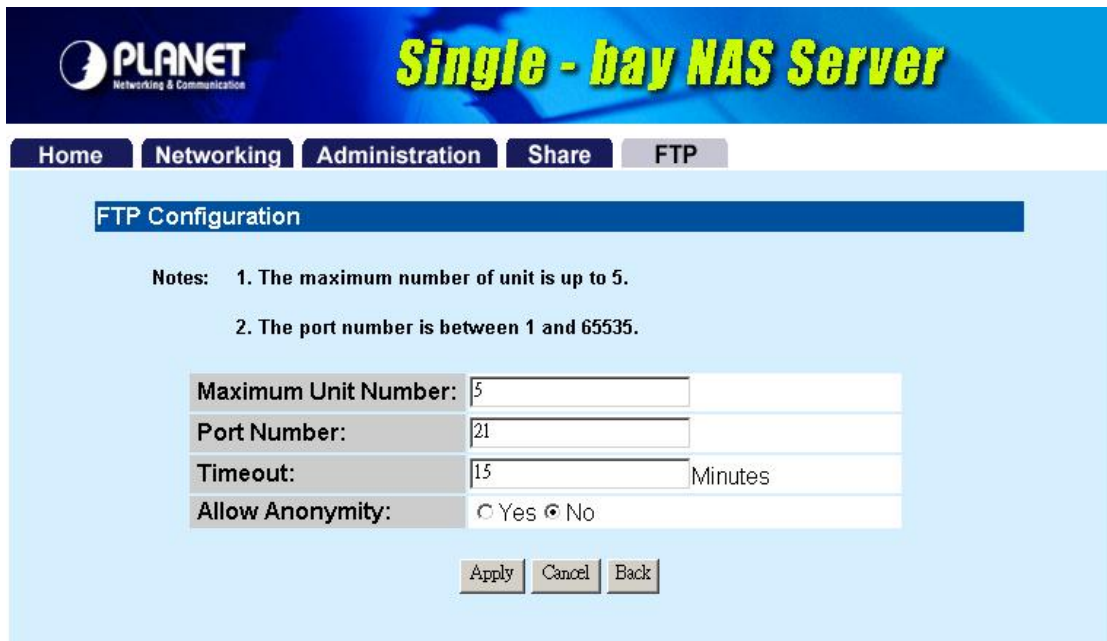
4.5 FTP

NAS-1100 provides a FTP server for remote access from Internet.



4.5.1 FTP Configuration

To setup this configuration such as user limitation, sever port number, length for time out and anonymous user restriction, click FTP Configuration.



Parameters	Description
Maximum Unit Number	Please enter the member number. Maximum member number is 5.
Port Number	Enter the FTP Port number. Default port number is 21. If you want to disable FTP function, please leave it blank.
Time Out	Enter the time length you want. Default is 15 minutes. If you leave it blank, the time out function will be disabled.
Allow Anonymity	Choose "Yes" to enable or "No" to disable anonymous user login.
Apply	Please click this button to save the settings.

Cancel Discard the changes.
Back Press to back to pervious page.

4.5.2 FTP Password

The screenshot shows the Planet Single-bay NAS Server web interface. At the top, there is a blue banner with the Planet logo and the text "Single - bay NAS Server". Below the banner is a navigation menu with buttons for "Home", "Networking", "Administration", "Share", and "FTP". The "FTP" button is highlighted. The main content area has a blue header that says "Change 'FTP user' login password". Below this, there are "Notes" stating: "Please provide the new password from 6 to 16 characters. Please don't use 'ftpuser' as your password." To the left of the form is a blue silhouette icon of a head with the text "ftpuser" below it. The form contains three input fields: "FTP User Name:" with the value "ftpuser", "New Password:" which is empty, and "Confirm Password:" which is empty. At the bottom of the form are three buttons: "Apply", "Undo", and "Back".

Parameters	Description
New Password	The default password for "ftpuser" account is "abc123". If you want to change the password, please enter the new password here.
Confirm Password	Please enter the new password here again.
Apply	Please click this button to save the new password.
Undo	Click to discard the changes.
Back	Press to back to pervious page.

Chapter 5 Troubleshooting

Q1. How to shut down the NAS-1100 properly?

Ans:

- ◆ To shut down the System properly, press the POWER button on the front panel for two seconds until Power LED blinks then go off.

Q2. The Setup Wizard can't configure My Network setting.

Ans: Make sure that your RJ-45 cable is connected to the NAS-1100 and your Switch/Hub.

- ◆ Check the LNK/ACT LED of NAS-1100, and make sure that it's light on.
- ◆ Check the power of the NAS-1100, Switch/Hub and make sure that they are power on.
- ◆ Check your PC's IP address, make sure that it has a static IP or connects with a router with DHCP Client.
- ◆ Use DEFAULT button to restore NAS-1100 to factory default and reboot.

Q3. The NAS-1100 can't find my HD and the Home page of Web-based UI display that the "HD unable to use.

Ans: There are some possibilities,

- ◆ The HD is broken. Please change another HD
- ◆ The HD jumper is not Master. Your HD jumper should be set to Master. Different Hard Disk has different jumper settings; please refer to your Hard Disk manual for more information.
- ◆ The HD is unformatted. Please format it with our HD Format tool in Administration.
- ◆ The partition format of HD is not FAT 32, ex. NTFS. Please format it with our Format tool in Administration.

Q4. My NAS-1100 can't work when it was not properly shut down, ex. Unplugging the adapter or blackout while it's working.

Ans:

- ◆ When the NAS-1100 is not shut down properly, Ex. power off the device by unplugging the adapter, the system will automatically check and repair MS-DOS file system of HD to ensure the system working normally. Please wait for system completing this process.
- ◆ Depend on different HD, the average time for checking and repairing tool: 20GB / 1Minute ~ 250GB/ 12Minutes.

Caution: If the NAS-1100 system fails to repair your HD File system, please unplug the HD and reconnect with a PC with Windows OS. The OS will run Scandisk to repair your HD.

Q5. I use NAS-1100 as a FTP server, but the users outside the LAN can't access it.

Ans:

- ◆ Please make sure NAS-1100 is work with a legal IP address. Or the IP is given by the network router.
- ◆ To use NAS-1100 as a FTP server without fixed IP or domain name, please setup your DDNS and Port Mapping of router (IP Sharing) first. As for the setting, please refer to the DDNS and Port mapping in your router's Manual.

Q6. I can't access the NAS-1100.

Ans:

- ◆ Check the LNK/ACT LED of NAS-1100, and make sure that it's light on.
- ◆ Make the PC IP address is in the same IP segment of NAS-1100.
- ◆ If there are already 5 users connected to NAS-1100, the system will block other users who want to access. Please check the Samba Users / FTP Users by clicking the "Click here for more information..." on the Web-based UI.

Q7. Why can't I save a file with size over 2GB to NAS-1100?

Ans:

- ◆ NAS-1100 is base on FAT32 file system. Therefore, the size of a single file is limited to no more than 2GB. However, there is an advantage of FAT32 file system. If the NAS-1100 is crashed due to some unexpected reasons, you can remove the hard drive inside and installed it to any Microsoft operating system. The data in the hard drive still can be accessed as long as the HD is healthy.

Free Manuals Download Website

<http://myh66.com>

<http://usermanuals.us>

<http://www.somanuals.com>

<http://www.4manuals.cc>

<http://www.manual-lib.com>

<http://www.404manual.com>

<http://www.luxmanual.com>

<http://aubethermostatmanual.com>

Golf course search by state

<http://golfingnear.com>

Email search by domain

<http://emailbydomain.com>

Auto manuals search

<http://auto.somanuals.com>

TV manuals search

<http://tv.somanuals.com>