



IR IP Camera

ICA-106

User's Manual

**Version: 1.0
(May, 2006)**

Copyright

Copyright© 2006 by PLANET Technology Corp. All rights reserved. No part of this publication may be reproduced, transmitted, transcribed, stored in a retrieval system, or translated into any language or computer language, in any form or by any means, electronic, mechanical, magnetic, optical, chemical, manual or otherwise, without the prior written permission of PLANET.

PLANET makes no representations or warranties, either expressed or implied, with respect to the contents hereof and specifically disclaims any warranties, merchantability or fitness for any particular purpose. Any software described in this manual is sold or licensed "as is". Should the programs prove defective following their purchase, the buyer (and not this company, its distributor, or its dealer) assumes the entire cost of all necessary servicing, repair, and any incidental or consequential damages resulting from any defect in the software. Further, this company reserves the right to revise this publication and to make changes from time to time in the contents hereof without obligation to notify any person of such revision or changes.

All brand and product names mentioned in this manual are trademarks and/or registered trademarks of their respective holders.

Federal Communication Commission Interference Statement

This equipment has been tested and found to comply with the limits for a Class B digital device, pursuant to Part 15 of FCC Rules. These limits are designed to provide reasonable protection against harmful interference in a residential installation. This equipment generates, uses, and can radiate radio frequency energy and, if not installed and used in accordance with the instructions, may cause harmful interference to radio communications. However, there is no guarantee that interference will not occur in a particular installation. If this equipment does cause harmful interference to radio or television reception, which can be determined by turning the equipment off and on, the user is encouraged to try to correct the interference by one or more of the following measures:

1. Reorient or relocate the receiving antenna.
2. Increase the separation between the equipment and receiver.
3. Connect the equipment into an outlet on a circuit different from that to which the receiver is connected.
4. Consult the dealer or an experienced radio technician for help.

FCC Caution:

To assure continued compliance.(example-use only shielded interface cables when connecting to computer or peripheral devices). Any changes or modifications not expressly approved by the party responsible for compliance could void the user's authority to operate the equipment.

This device complies with Part 15 of the FCC Rules. Operation is subject to the Following two conditions: (1) This device may not cause harmful interference, and (2) this Device must accept any interference received, including interference that may cause undesired operation.

Federal Communication Commission (FCC) Radiation Exposure Statement

This equipment complies with FCC radiation exposure set forth for an uncontrolled environment. In order to avoid the possibility of exceeding the FCC radio frequency exposure limits, human proximity to the antenna shall not be less than 20 cm(8 inches) during normal operation.

R&TTE Compliance Statement

This equipment complies with all the requirements of DIRECTIVE 1999/5/CE OF THE EUROPEAN PARLIAMENT AND THE COUNCIL OF 9 March 1999 on radio equipment and telecommunication terminal Equipment and the mutual recognition of their conformity (R&TTE)

The R&TTE Directive repeals and replaces in the directive 98/13/EEC (Telecommunications Terminal Equipment and Satellite Earth Station Equipment) As of April 8,2000.

Safety

This equipment is designed with the utmost care for the safety of those who install and use it. However, special attention must be paid to the dangers of electric shock and static electricity when working with electrical equipment. All guidelines of this and of the computer manufacture must therefore be allowed at all times to ensure the safe use of the equipment.

WEEE regulation



To avoid the potential effects on the environment and human health as a result of the presence of hazardous substances in electrical and electronic equipment, end users of electrical and electronic equipment should understand the meaning of the crossed-out wheeled bin symbol. Do not dispose of WEEE as unsorted municipal waste and have to collect such WEEE separately.

Revision

User's Manual for PLANET IR IP Camera
Model: ICA-106
Rev: 1.0 (May, 2006)
Part No. EM-ICA106

Table of Contents

<i>Chapter 1</i>	<i>Overview</i>	5
1.1	Introduction	5
1.2	Features:.....	5
1.3	Application:	6
1.4	System Requirement.....	6
1.5	Package Contents.....	6
<i>Chapter2</i>	<i>Hardware Connections</i>	7
2.1	Hardware Installation	9
<i>Chapter3</i>	<i>Login to Homepage</i>	11
3.1	Before Operation	11
3.2	Enabling UPnP for Windows XP™	12
3.3	Install the Camera with a Router	17
3.4	Before connected via web browser.....	19
3.5	The first time access via web browser.....	19
3.6	Logging in as a User.....	20
3.7	Logging in as an Administrator	21
<i>Chapter 4</i>	<i>Operating the Network Camera</i>	22
4.1	Control Panel	23
4.2	Advanced Function Area	25
4.2.1	Home	25
4.2.2	Setting.....	26
4.2.2.1	System	27
4.2.2.2	Network	29
4.2.2.3	Video/Audio	32
4.2.2.4	User	35
4.2.2.5	Motion Detection.....	36
4.2.2.6	Status	38
4.2.2.7	Factory Default.....	39
4.2.2.8	Restart.....	39
4.2.1.9	Upgrade:	40
4.3	Capture	43
4.4	Recording	44
<i>Appendix A: Restore Factory Default Settings</i>		45
<i>Appendix B: Troubleshooting & Frequently Asked Questions</i>		46
<i>Appendix C: PING IP Address</i>		50
<i>Appendix D: Bandwidth Estimation</i>		51
<i>Appendix E: Specifications</i>		52
<i>Appendix F: Time Zone Table</i>		54
<i>Appendix G: DDNS Application</i>		56

Chapter 1 Overview

This user's guide explains how to operate the Network Camera from a computer. This user's guide is written to be read on the computer display. However, users might consider printing it out to access easily and read it before you operate the Network Camera.

1.1 Introduction

This Network Camera is an inexpensive and fully scalable surveillance technology. Because the Network Cameras can be plugged in to your existing computer network infrastructure, you will potentially save thousands of dollars on unnecessary cabling.

The Network Camera is accessible via the LAN / WLAN or Internet connection. Connect your Network Camera directly to a computer network or DSL modem, and with a standard Web browser you get instant, on demand video streams. Within minutes you can set up the Network Camera to capture a video sequence to a PC. Live video image can be uploaded to a website for the world to see or made available only to select users on the network.

1.2 Features:

- MPEG4 / JPEG dual video compression
- 6 high-light IR LEDs for 0 Lux operation
- High quality 1/4" CMOS image sensor
- Pre recording for motion triggered up to 15 seconds
- Wired and Wireless LAN interface
- Up to 400% digital zoom
- Built-in internal microphone
- Remote-Control via Internet Explorer
- Support statistic and dynamic IP address
- DDNS and UPnP
- Multi-channel control software for surveillance application
- On-line firmware upgrade

1.3 Application:

- Remote monitoring
- Surveillance

1.4 System Requirement

- Microsoft Internet Explorer 5.5 or later
- VGA Monitor resolution 1024 x 768
- Pentium4 1.3GHz or above
- Memory Size: 256MB or above
- Windows ME, 2000, XP, or 2003

1.5 Package Contents

User can find the following items in the package:

1. IR IP Camera x 1
2. Camera Stand x 1
3. Power Adapter x 1
4. User's Manual CD x 1
5. Quick Installation Guide x 1

If any of the above items are missing, please contact your dealer immediately.

Note: *Using a power supply with a different voltage than the one included with the Network Camera will cause damage and void the warranty for this product.*

Chapter2 Hardware Connections



DC Power Jack

The DC power input jack is located on the Network Camera's bottom. The input power is 5VDC. Note that supply the power to the Network Camera with standard power adapter included in package. Otherwise, the improper power adapter may damage the unit and result in danger.

LAN Socket

Beside the DC power Jack, the LAN socket is an RJ-45 connector for connections to 10Base-T or 100Base-TX Fast Ethernet cabling. Please use Category 5 "straight through" cable to connect the Network Camera to an Ethernet network switch or hub.

10/100M Ethernet LEDs

LED stands for Light-Emitting Diode. The Ethernet LEDs are located on the RJ-45 connector. These LEDs are used to indicate the status of Network connection.

Factory Default Reset

This button is hidden in the pinhole under then Network Camera's bottom. Please refer to the Appendix A in this manual for more information.



Microphone

The Network Camera's has built-in an internal microphone. This microphone is also hidden in the pinhole located on the front panel.

Status LEDs

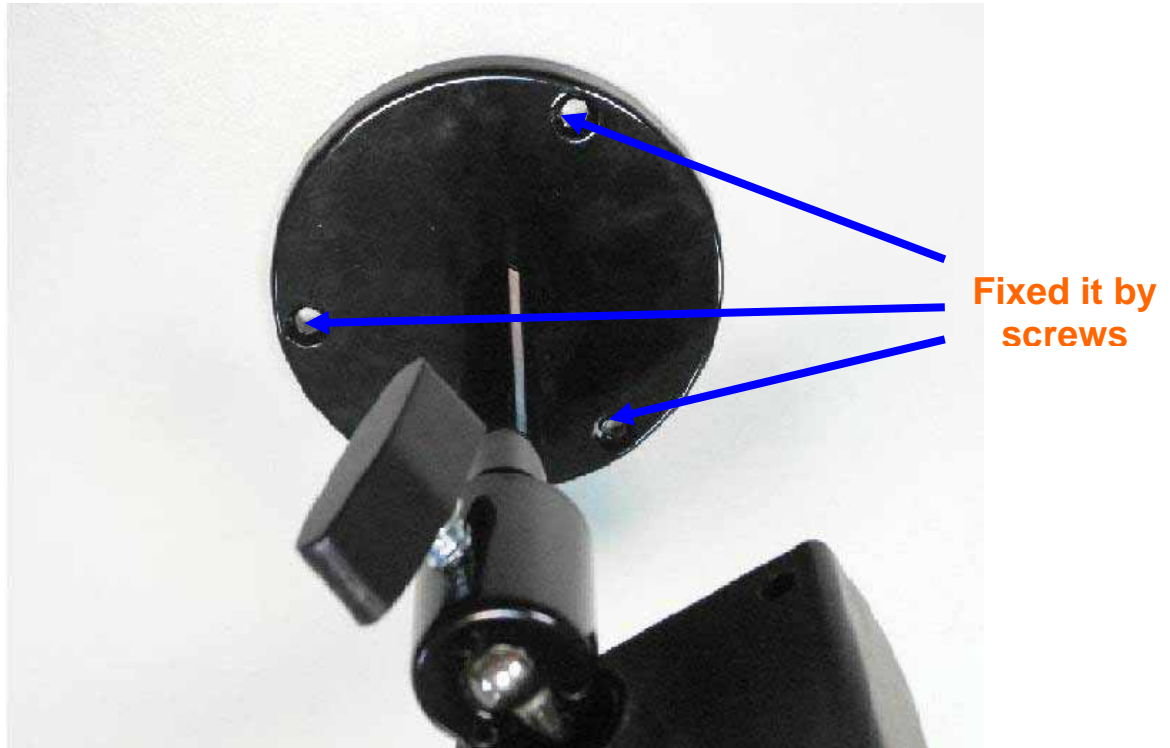
This LED is used to indicate the status of Network Camera.

2.1 Hardware Installation

1. Attach the Network Camera with the included stand

2. Place the Camera on the table or fix it onto ceiling or wall

Use screws to fix the Network Camera onto the ceiling or wall. You could also put the Network Camera on the table directly.



3. Plug an Ethernet cable into the Network Camera

Connect an Ethernet cable to the LAN socket located on the Network Camera's bottom and attach it to the network.

**Ethernet
Cable**



4. Connect the external power supply to Network Camera

Connect the external power supply to the DC power jack of the Network Camera. **Note:** Use the power adapter, 5VDC, included in the package and connect it to wall outlet for AC power.

**Power
Cable**



Once you have installed the Network Camera well and powered on, the status LED will turn green first and then orange. It means the system is booting up successfully. Furthermore, if you have a proper network connection, and access to the Network Camera, the 10/100M LAN LED will flash green

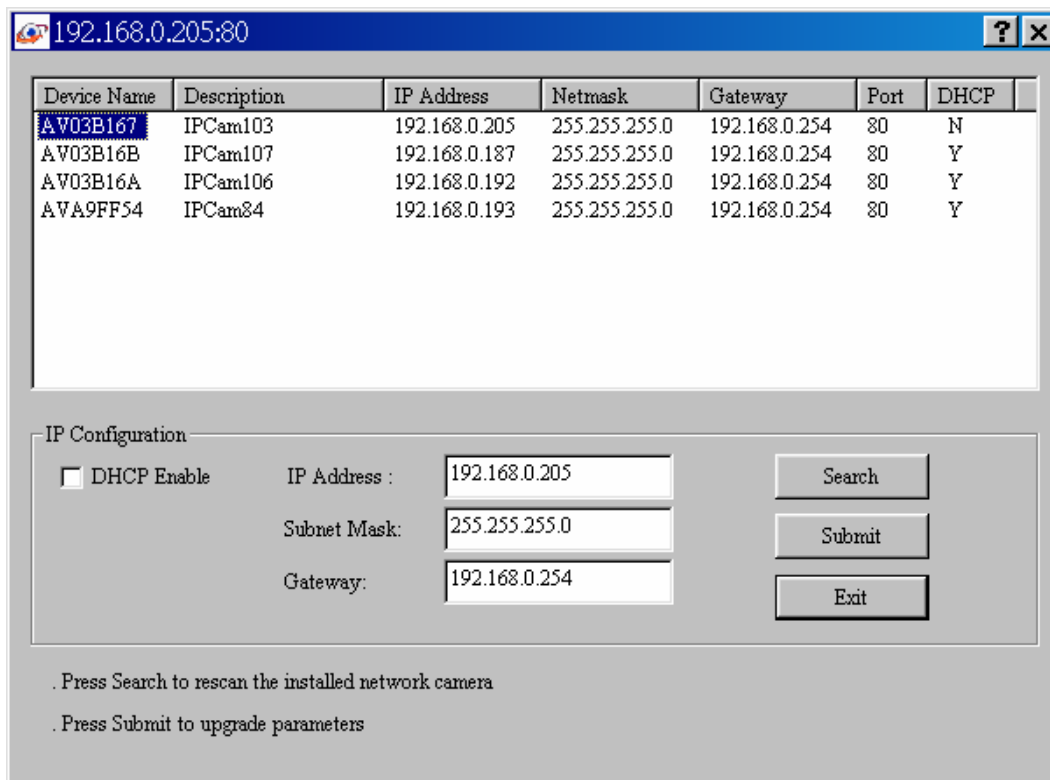
Chapter3 Login to Homepage

3.1 Before Operation

Install the IP Address of Network Camera

When you installed your Network camera on your LAN environment, you may execute "MP4 IP Finder.exe" to discover Network camera's IP address.

"MP4 IP Finder.exe" is used to scan the Installed Network Camera on a LAN, setting the Network Camera Name, IP address settings and so on.



Using your mouse to select any one of the Network Cameras within your LAN environment, you can search out its IP address and other IP parameters as follows:

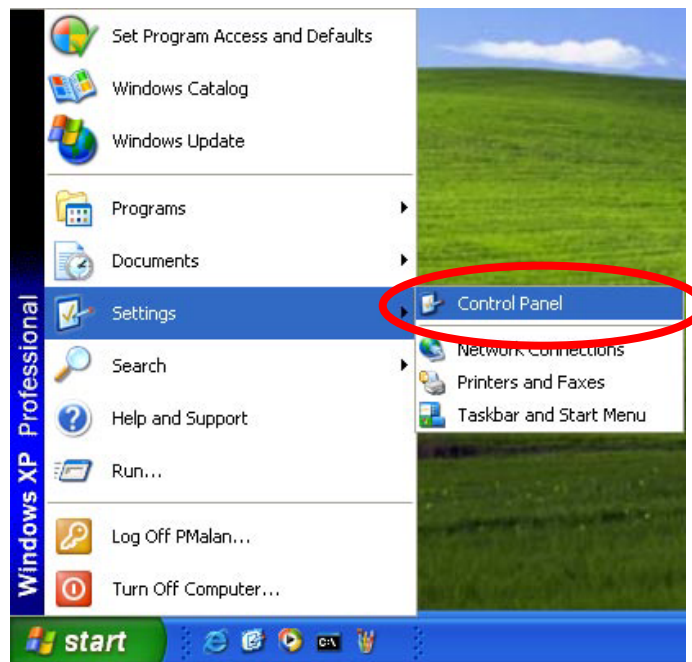
1. Edit the IP address of this Network Camera.
2. Edit the Gateway Address if necessary.
3. Edit the Network Mask if necessary.
4. 'Submit' it.

5. The Network Camera will restart the system to validate the new setting after seconds.

Alternatively, user can use another approach to search out the Network Camera on the LAN by UPnP as bellow:

3.2 Enabling UPnP for Windows® XP™

UPnP™ is short for Universal Plug and Play, which is a networking architecture that provides compatibility among networking equipment, software, and peripherals. This device is an UPnP enabled Network Camera. If the operating system, Windows XP, of your PC is UPnP enabled, the device will be very easy to configure. Use the following steps to enable UPnP settings only if your operating system of PC is running Windows XP. **Note** that Windows 2000 does not support UPnP feature.

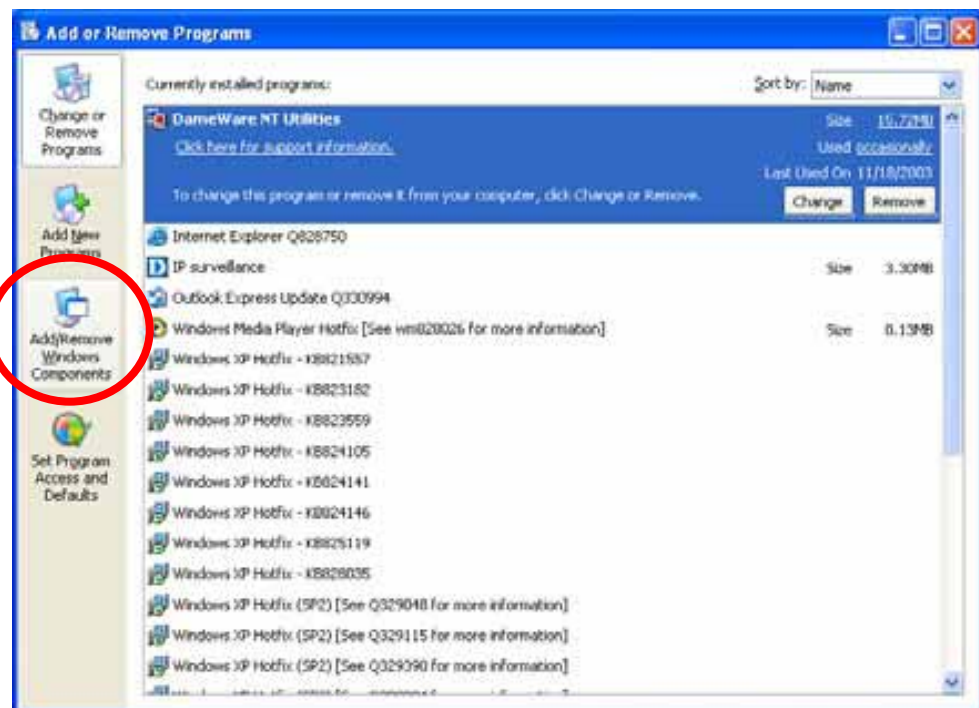


Go to **Start > Settings**.

Click **Control Panel**

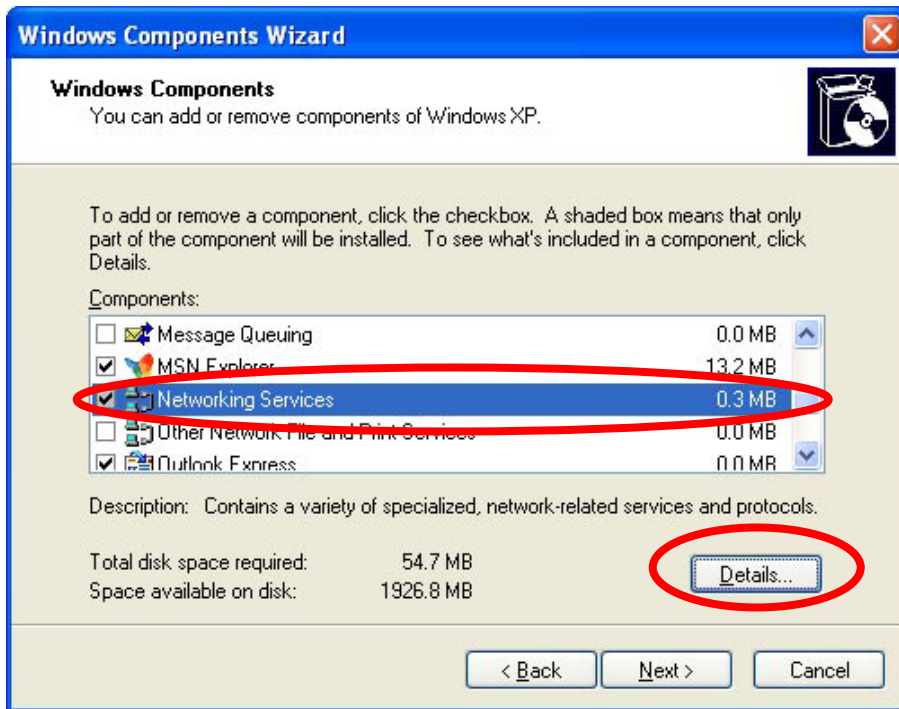


Click **Add or Remove Programs**



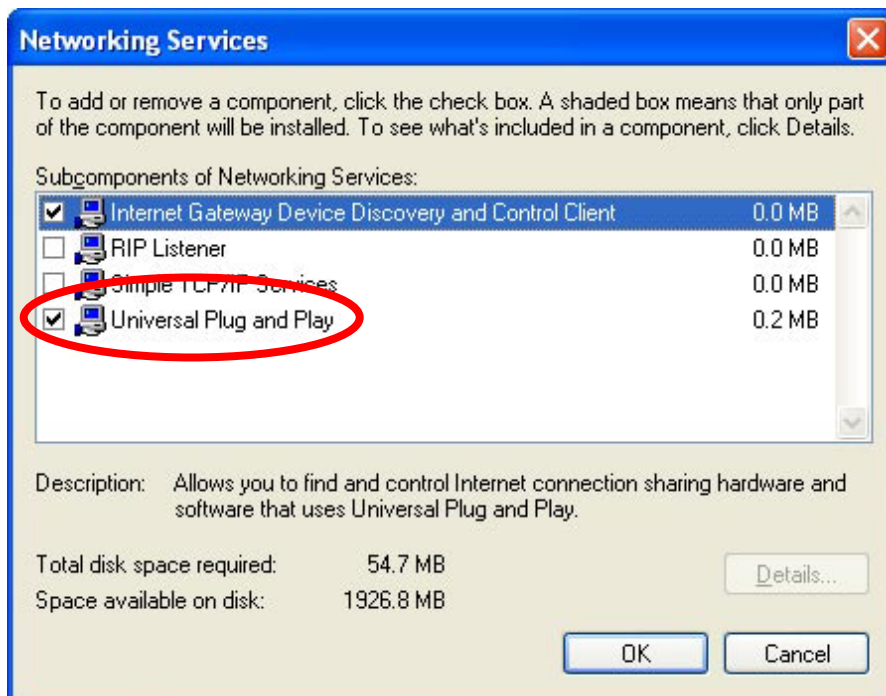
Click **Add/Remove Windows Components**

The following screen will appear:



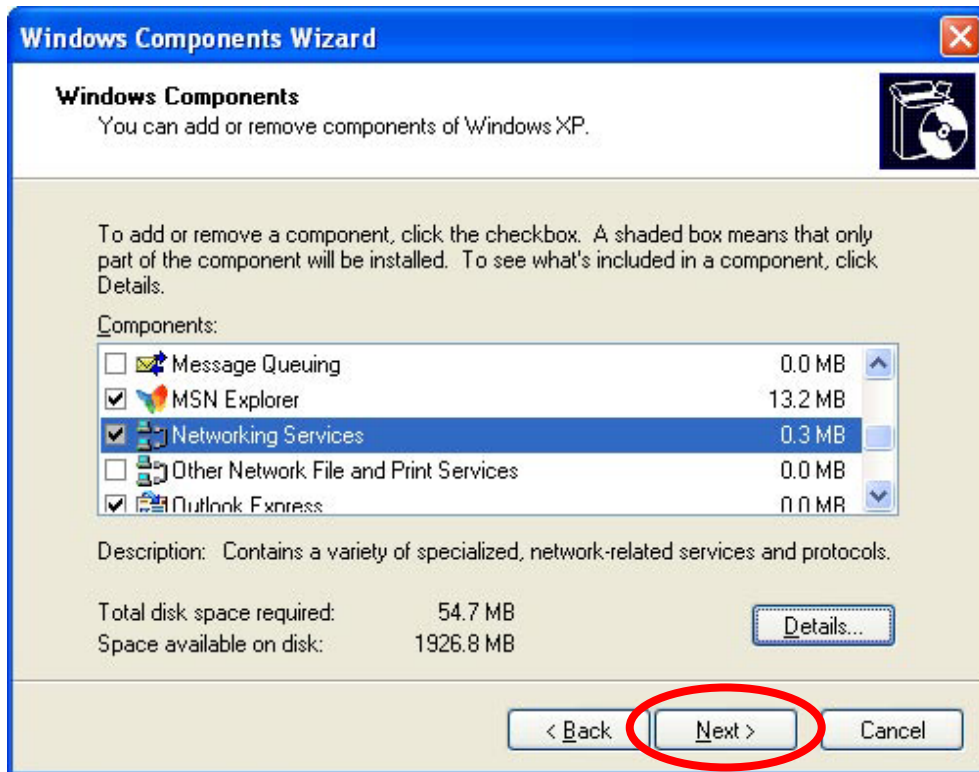
Select **Networking Services**

Click **Details**

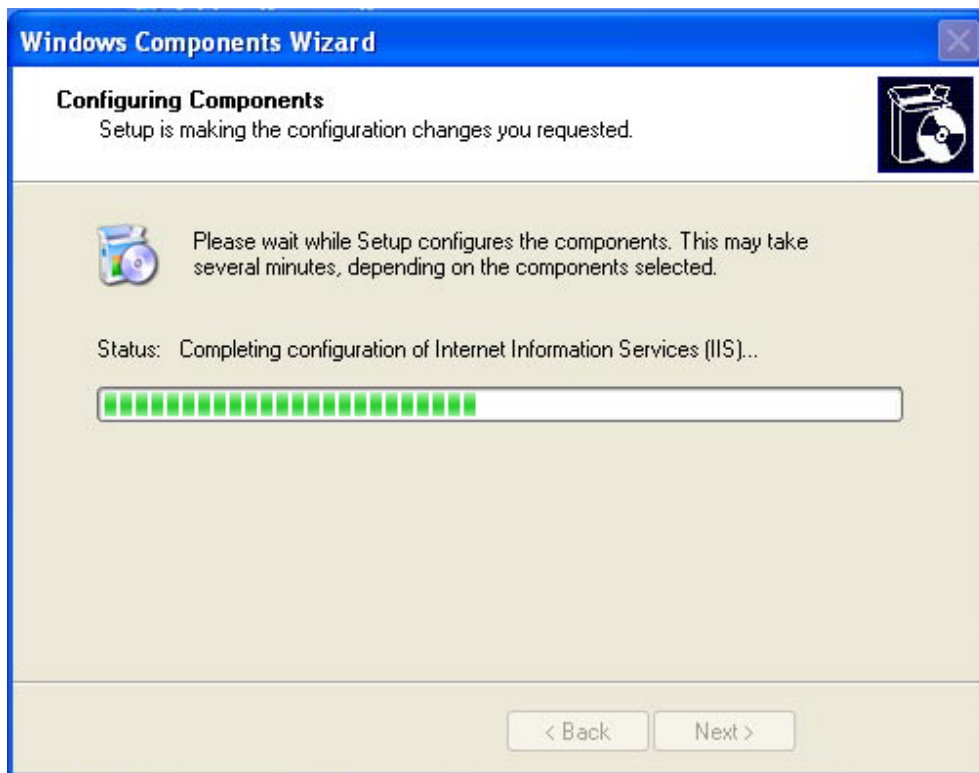


Select **Universal Plug and Play**

Click **OK**



Click **Next**



Please wait while Setup configures the components.



Click **Finish**

To view your Network Camera in an Internet browser, go to your Desktop and click **My Network Places**.

Click **My Network Places**



Click the targeted **Network Camera**

The last three digits (146), represent the fourth octet of your Network Camera's IP address (in this example, 198.168.0.146).

3.3 Install the Camera with a Router

The Network Camera can be used with a router. This section explains how to view the camera from either the Internet or from inside your LAN. If the Network Camera was installed on the LAN with a router, then it can get a dynamic IP address from the DHCP server. However, if the Network Camera wants to be accessed from the WAN, its IP address needs to be setup as fixed IP, also the Virtual Server function of router needs to be setup.

Installing a Network Camera with a router on your network is an easy 3–step procedure:

- (1) Assign a local IP Address to your Network Camera
- (2) Access the Router with Your Web browser
- (3) Open Virtual Server Ports for Your Router (Enable Remote Viewing)

(1) Assign a local fixed IP address to your Network Camera

Follow the steps in the **Quick Installation Guide** to configure the Network Camera. The camera will be assigned a local fixed IP Address that allows it to be recognized by the router. Manually setup the Network Camera as fixed IP, for example, such as *192.168.0.120*.

(2) Access the Router with Your Web browser

If you have cable or DSL service, you will most likely have a dynamically assigned WAN IP Address. 'Dynamic' means that your router's WAN IP address can change from time to time depending on your ISP. A dynamic WAN IP Address identifies your router on the public network and allows it to access the Internet. To find out what your router's WAN IP Address is, go to the **Status** screen on your router and locate the WAN information for your router.

Note: Because a dynamic WAN IP can change from time to time depending on your ISP, you may want to obtain a Static IP address from your ISP. A Static IP address is a fixed IP address that will not change over time and will be more convenient for you to use to access your camera from a remote location. If you could not get a Static IP address from your ISP, the DDNS is a solution alternatively. Please refer to Appendix G for more information.

(3) Open Virtual Server Ports to enable remote image viewing

The firewall security features built into the most routers prevent users from accessing the video from the Network Camera over the Internet. The router connects to the Internet over a series of numbered ports. The ports normally used by the Network Camera are blocked from access over the Internet. Therefore, these ports need to be made accessible over the Internet. This is accomplished using the **Virtual Server** function on the router. The Virtual Server ports used by the camera must be opened through the router for remote access to your camera.

Due to each router have different settings. You may refer to the below steps to configure your router's Virtual Server settings

- Enabled **Virtual Server** function.
- Enter a unique name for each entry.
- Select **Both** under **Protocol Type (TCP and UDP)**.
- Enter your camera's local IP Address (e.g., **192.168.0.120**, for example) in the **Private IP** field.
- If you are using the default camera port settings, enter **80** into the **Public** and **Private Port** section.
- If there has **Scheduling** option, it should be set to **Always** so that the camera images can be accessed at any time.

Important: Some ISPs block access to port 80. Be sure to check with your ISP so that you can open the appropriate ports accordingly. Some ISPs block traffic on commonly used ports to conserve bandwidth. If your ISP does not pass traffic on port 80, you will need to change the port the camera uses from 80 to something else, such as 8080. Not all routers are the same, so refer to your user manual for specific instructions on how to open ports.

Enter valid ports in the **Virtual Server** section of your router

Please make sure to check the box on this line to enable settings

Then the Network Camera can be access from WAN by the router's WAN IP Address.

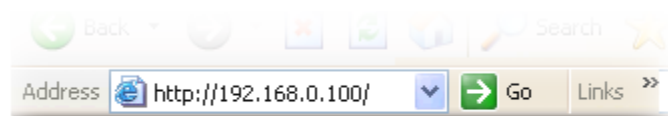
3.4 Before connected via web browser

The Network Camera web page communicates with the Network Camera using an ActiveX control. The ActiveX control component must be installed on your PC in advance. To download ActiveX control component, user must install the Liveplayer application program. Please refer to Liveplayer manual for detail.

By now, you have finished your entire PC configuration for Network Camera.

3.5 The first time access via web browser

1. Start the web browser on the computer and type the IP address of the Network Camera you want to monitor as below:



The Login Window of the Network Camera is displayed:



2. Type in your login name and password under “USERNAME” and “PASSWORD” textbox.

For the first time use (default value), input the

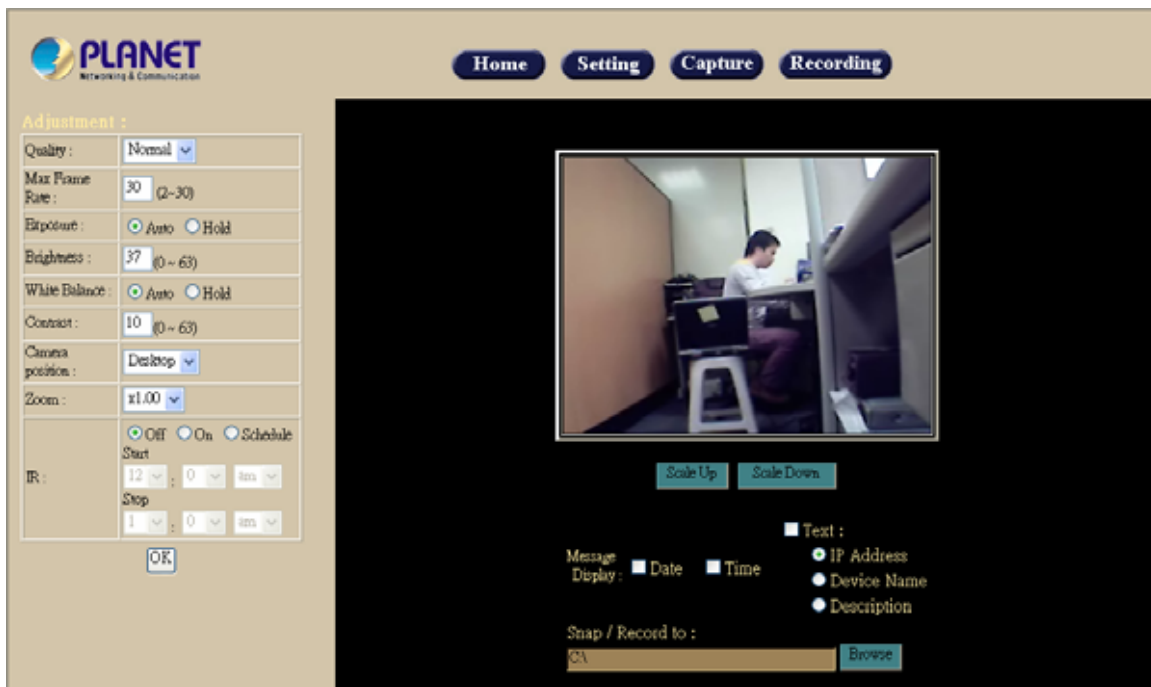
User Name: **admin**

Password: **admin**

That's, type in “**admin**” on the “User Name” as a default name and “**admin**” on “Password”. Click “OK” button to start the main menu.

Now, you login to the Network Camera as a full-authorized administrator. You can enter “Setting” to change the password and setup “Administrator” or “User” authority. Please refer to “Setting” → “User”

3. Display the image. The video will be displayed.



3.6 Logging in as a User

There are two levels of privilege, “view” and “config”, if you log in the Network Camera as a user.

The first one is a user with “view” privilege. The “view” user can only view the video and or audio streaming. Can not do anything else.

The second one is a user with “config” privilege. The “config” user can view the video and or audio streaming. Also user can change the settings in the “Home” and “Setting” pages except “user” and “Factory Default” options. Furthermore, “Capture” and “Recording” will be not available.

3.7 Logging in as an Administrator

If you log in the Network Camera as the Administrator, you can perform all the settings provided within the software. The Administrator may be logged in at any time, regardless of the number of the users being accessed.

Chapter 4 Operating the Network Camera

Start-up screen will be as follow no matter an ordinary users or an administrator.

Advanced Function

The screenshot displays the PLANET Network Camera web interface. At the top, there is a navigation bar with buttons for Home, Setting, Capture, and Recording. The main interface is divided into two primary sections: the Control Panel on the left and the Viewing Area on the right.

Control Panel: This panel contains various adjustment settings for the camera. It includes dropdown menus for Quality (Normal), Max Frame Rate (30), Camera position (Desktop), and Zoom (x1.00). It also features radio buttons for Exposure (Auto/Hold), White Balance (Auto/Hold), and IR (Off/On/Schedule). There are input fields for IR Start and Stop times, and an OK button at the bottom.

Viewing Area: This section displays a live video feed from the camera, showing a person sitting at a desk in an office. Below the video feed are buttons for Scale Up and Scale Down. At the bottom of the viewing area, there are options for Message Display (Date and Time) and Text (IP Address, Device Name, and Description). A Snap / Record to field with a Browse button is also present.

Viewing Area: Images from the Network Camera

Scale UP: Click this button to scale up the image on the screen

Scale Down: Click this button to scale down the image on the screen

Snap / Record to: Enter the path to save the image or files.

4.1 Control Panel

Control Panel Area: Network Camera Manipulation and picture quality control

Adjustment :

Quality :	Normal ▾
Max Frame Rate :	30 (2~30)
Exposure :	<input checked="" type="radio"/> Auto <input type="radio"/> Hold
Brightness :	37 (0 ~ 63)
White Balance :	<input checked="" type="radio"/> Auto <input type="radio"/> Hold
Contrast :	10 (0 ~ 63)
Camera position :	Desktop ▾
Zoom :	x1.00 ▾
IR :	<input checked="" type="radio"/> Off <input type="radio"/> On <input type="radio"/> Schedule Start 12 ▾ : 0 ▾ am ▾ Stop 1 ▾ : 0 ▾ am ▾

OK

Item	Button	Meaning
1	Quality	Adjust video quality. High: Video is better but frame rate may be slower Low: Video is poor but frame rate may be higher Normal: System default value
2	Max Frame Rate	Adjust the frame rate of video stream
3	Exposure	Choose auto or fixed exposure of camera
4	Brightness	Adjust picture brightness of camera
5	White Balance	Choose auto or fixed white balance of camera

6	Contrast	Adjust picture contrast of camera
7	Camera position	- Desktop - Ceiling - Mirror
8	Zoom	Adjust ratio of digital zoom in
9	IR	Turn on or off the built-in IR LEDES. Or you can set a schedule to let the IR on/off.

Note: Select "OK" to save and enable the setting.

4.2 Advanced Function Area

Advanced function area: only available for administrator. It has contained four categories.

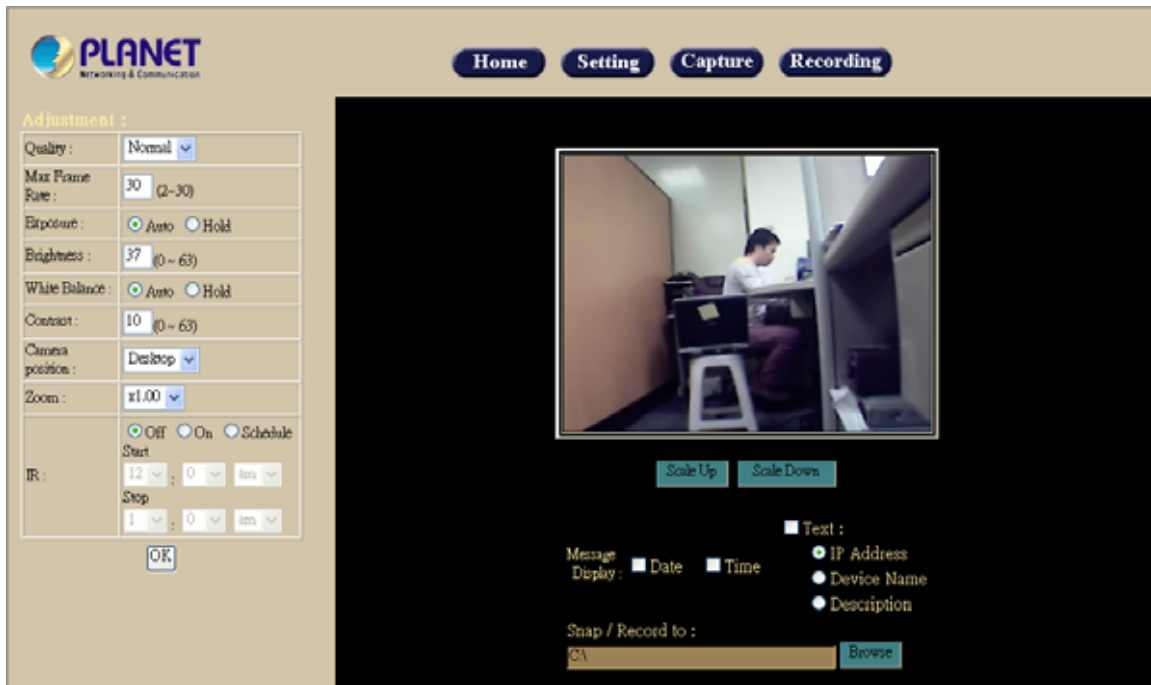
- Home The home page of the Network Camera.
- Setting System Configuration
- Capture Capture current screen and save to HDD or other media
- Recording Record current video stream and save to HDD or other media

Setting menu consists of some sub-menu. Click on each menu to display its setting page.










4

4.2.1 Home

When the “Home” button pressed, you will back to the main screen.



4.2.2 Setting

Setting		
Symbol	Item	Action
	System	Define camera name. Set time and date of the Network Camera. Enable/disable NTP function. System power on notification.
	Network	Configure Network setting such as DHCP On/Off, DDNS and UPnP.
	Video/Audio	Adjust camera parameters and video / audio settings.
	User	Setup user name, password and login privilege
	Motion Detection	Setup motion detection and triggered SMTP and/or FTP accounts.
	Status	System information, status, and log.
	Factory Default	Recall the Network Camera to factory default setting
	Restart	Reboot this device
	Upgrade	Firmware upgrade

4.2.2.1 System:

Define system parameters, NTP, and notification

System Settings :	
Device Name :	ICA-106
Description :	IR_IP_Camera
Time :	1 : 54 am
Date :	Jan 1, 2006 (mth, day, year)
Timezone :	(GMT+08:00) Taipei

NTP :	
Time Server :	<input type="radio"/> Enable <input checked="" type="radio"/> Disable
Server Address :	
Update Schedule :	Daily at 12 : 0 am

IP Address Notification :	
<input checked="" type="checkbox"/> Notify by E-Mail	
E-Mail To :	
From :	
Subject :	IP Address Change Notification
Outbound SMTP Server :	<input checked="" type="checkbox"/> Need Authentication Username: <input type="text"/> Password: <input type="text"/>

System Settings:

- Device Name:

It's a unique number for each Network Camera for identification.

- Description:

You can enter the name of this unit here. It's very useful to identify the specific device from multiple units. Note that use “_” or “-“ to replace “space” character to separate the name string. For example, “IP_CAM” or “IP-CAM” will be ok but “PT IP” will not work here.

You can setup the Network Camera time manually or make it synchronized with remote server. Also, you may select your time zone in order to synchronize time locally.

- **Time:**
Change the time according to the “*hh:mm*” and by 12 hours format.
- **Date:**
Change the date according to the “*mm/dd/yyyy*” format
- **Time zone:**
Select the time zone setting accordingly.

NTP:

- **Time Server:**
Choose “enable” will get the time for NTP server periodically.
- **Server Address:**
Key in the IP address of NTP server.
- **Update Schedule:**
Choose the update schedule with NTP server by daily, weekly, or monthly.

IP Address Notification:

- **Notify by E-Mail:**
If enable this option, then when Network Camera connected to Internet, a mail that contains related information will be mailed to preset e-Mail address.
- **E-Mail To:**
E-Mail address of the destination.
- **From:**
E-Mail address of the source, this Network Camera.
- **Subject:**
It's a unique number for each Network Camera for identification.
- **Outbound SMTP Server:**
The address of SMTP server. If your SMTP server needs the authentication, please check the “Need Authentication” and enter your Username and Password.

Select “OK” to save and enable the setting.

4.2.2.2

Network:

Configure Network setting such as DHCP On/Off, DDNS and UPnP

IP Setting :	
DHCP :	<input type="radio"/> On <input checked="" type="radio"/> Off
IP Address :	192 . 168 . 0 . 20
Subnet Mask:	255 . 255 . 255 . 0
Gateway:	192 . 168 . 0 . 254
DNS Server:	0 . 0 . 0 . 0
Secondary DNS Server:	0 . 0 . 0 . 0

DDNS :	
DDNS :	<input type="radio"/> Enable <input checked="" type="radio"/> Disable
Service Provider :	www.dyndns.org
Host Name :	
Account :	
Password :	

UPnP :	
UPnP :	<input type="radio"/> Enable <input checked="" type="radio"/> Disable

Option :	
HTTP Aux. Port Number :	80

IP Setting:

- **DHCP:** DHCP: Stands for Dynamic Host Configuration Protocol.

The Network Camera will be assigned an IP address and related information by DHCP server while "DHCP ON". Otherwise, user needs to specify IP address and related information to the Network Camera manually.

- **IP address, Subnet mask, Default gateway, Primary DNS, Secondary DNS:**

If turns DHCP OFF, then user should enter these network parameters by manual.

Note: Network Camera will reboot automatically make this setting to take effect.

DDNS: Stands for Dynamic Domain Name Server

The Network Camera supports DDNS. DDNS allows the Network Camera to use an easier way to remember naming format rather than an IP address. The name of the domain is like the name of a person, and the IP address is like his phone number. On the Internet we have IP numbers for each host (computer, server, router, and so on), and we replace these IP numbers to easy remember names, which are organized into the domain name. As to ADSL environment, most of the users will use dynamic IP addresses. If users want to set up a web or a FTP server, then the Dynamic Domain Name Server is necessary. For more DDNS configuration, please consult your local dealer.

Your Internet Service Provider (ISP) provides you at least one IP address which you use to connect to the Internet. The address you get may be static, meaning it never changes, or dynamic, meaning it's likely to change periodically. Just how often it changes, depends on your ISP. A dynamic IP address complicates remote access since you may not know what your current WAN IP address is when you want to access your network over the Internet. The solution to the dynamic IP address problem comes in the form of a dynamic DNS service.

The Internet uses DNS servers to lookup domain names and translates them into IP addresses. Domain names are just easy to remember aliases for IP addresses. A dynamic DNS service is unique because it provides a means of updating your IP address so that your listing will remain current when your IP address changes. There are several excellent DDNS services available on the Internet and best of all they're free to use. One of the services you can use is www.DynDNS.org. You'll need to register with the service and set up the domain name of your choice to begin using it. Please refer to the home page of the service for detailed instructions or refer to Appendix G for more information.

- DDNS:

To enable or disable the DDNS service here.

- Service Provider:

Choose the built-in DDNS server.

- Host Name:

The domain name is applied of this Network Camera.

- Account:

The account is used to log into DDNS.

- Password:

The password is used to log into DDNS.

UPnP:

UPnP is short for Universal Plug and Play, which is a networking architecture that provides compatibility among networking equipment, software, and peripherals. This device is a UPnP enabled Network Camera. If your operating system is UPnP enabled, the device will be easier to configure. If you do not want to use the UPnP functionality, it

can be disabled by clicking “**Disable**” option.

HTTP Port :

The Network Camera supports two HTTP ports. The first one is default port 80 and this is one is fixed. This port is very useful for Intranet usage. The other HTTP port is setting able. Users could assign the port number of http protocol, and the WAN users should follow the port number to login. If the http port is not assigned as 80, users have to add the port number in back of IP address. For example: <http://192.168.0.20:8080>.

Wireless LAN:

Users could assign the port number of http protocol, and the WAN users should follow the port number to login.

Select “OK” to save and enable the setting.

4.2.2.3 Video/Audio:

Adjust Camera parameters

Video / Audio Settings :	
Resolution :	320*240
Power line frequency :	60Hz
Quality :	<input checked="" type="radio"/> by bit rate control 256 k bps (32 ~ 1024) <input type="radio"/> by compress ratio Normal
Message Display :	<input checked="" type="checkbox"/> Date <input checked="" type="checkbox"/> Time <input checked="" type="checkbox"/> Text : <input type="radio"/> IP Address <input type="radio"/> Device Name <input type="radio"/> Description
Video Type :	MPEG 4
Audio :	Disable
Power Saving :	<input type="checkbox"/> Yes
Video Enable :	<input checked="" type="checkbox"/> Yes
IR :	<input checked="" type="radio"/> On <input type="radio"/> Off

Adjustment :	
Max Frame Rate :	30 (2 ~Max)
Exposure :	<input checked="" type="radio"/> Auto <input type="radio"/> Hold
Brightness :	37 (0 ~ 63)
White Balance :	<input checked="" type="radio"/> Auto <input type="radio"/> Hold
Contrast :	10 (0 ~ 63)
Sharpness :	NormalEdge
Camera position :	Desk top
Zoom :	x1.00

Video / Audio Setting:

- Resolution:

The Network Camera supports 5 kind resolutions:

- 128x96

- 176x144
- 160x120
- 320x240
- 640x480

- Power line frequency:

User should choose either 50 or 60 Hz to meet the power line frequency in your country.

- Quality:

There are two modes of video quality. User can adjust the video quality by either bit-rate control or compression ratio:

- Bit-rate control: from 32kbps to 1024kbps
- Compression ratio:
 - High: Video is better but frame rate may be slower
 - Low: Video is poor but frame rate may be higher
 - Normal: System default value.

- Video Output:

The Network Camera supports four kind of video standard. User can choose one of them to fit to the local video standard.

- Message Display:

You may choose the message that you want to display on the output video.

- Video Type:

The Network Camera supports two kind of video compression mode: MPEG4 or JPEG. User can choose one of the two compression mode based on requirement.

- Audio:

The Network Camera supports ADPCM for audio compression.

- Video Enable:

Enable this option will allow stream video to remote clients. Otherwise, the Network Camera will not stream video out.

- IR:

User can turn on or off the built-in IR LED. This function is very useful under low illumination environment.

Adjustment:

- Max Frame Rate:

User can set the desired max frame rate to match the limitation of bandwidth or other requirement.

- Exposure:

Auto: will adjust the internal gain automatically.

Hold: will fix the internal gain.

- Brightness:

Large value will brighten Camera.

- White Balance:

Auto: will adjust the white balance automatically.

Hold: will fix the white balance.

- Contrast:

Large value will contrast Camera heavily.

- Camera Position:

There are three options: Desktop, Ceiling and Mirror.

- Zoom:

The Camera supports smoothly digital zoom in function. The ratio of digital zoom is varying based on video resolution:

Resolution	Zoom
128 x 96	1x 2.23x 3.46x 4x
176 x 144	1x 2.23x 3.46x 4x
160 x 120	1x 2.23x 3.46x 4x
320 x 240	1x 1.33x 1.66x 2x
640 x 480	1x

Select "OK" to save and enable the setting.

4.2.2.4

User:

Setup user name, password and login privilege

Admin Login :

Administrator ID :	admin
Password :
Verify Password :

Live Play Access :

Allow access by :	<input type="radio"/> Everyone <input checked="" type="radio"/> Only users in database
-------------------	--

User Database :

		Add / Modify User :	
		User Name :	
		User Password :	
		Verify Password :	
		Privilege :	View
		Add Modify Delete	
		OK Cancel	

There are 3 levels of privilege supported in the Network Camera:

- Admin: This account can do anything in the Network Camera.
- Config: This account can set some parameters of Network Camera.
- View: This account can only view the video stream from the Network Camera.

User only can change or modify the username and password of "Administrator".

You also can set up usernames and passwords for users. The privilege of each user can be "config" or "view".

- Live Play Access:

You can set the live play can be access by everyone or just the user who is in database.

Select "OK" to save and enable the setting.

4.2.2.5

Motion Detection:

Setup motion detection and sensor sensitivity

The motion detection is implemented by a patented software algorithm, it runs on the Network Camera, due to a larger processing power of motion detection, the overall performance of Network Camera will be degraded; the frame rate may be reduced.

Alerts : <input checked="" type="checkbox"/> Enable	
Detect Method :	<input checked="" type="checkbox"/> Movement on image Sensitivity : <input type="text" value="Normal"/> ▾
Video Record :	<input checked="" type="radio"/> No, e-mail notify only <input type="radio"/> Yes, and send recordings by : <input checked="" type="radio"/> E-mail <input type="radio"/> FTP <input type="checkbox"/> with e-mail notify <input type="radio"/> Yes, and send snaps by : <input checked="" type="radio"/> E-mail <input type="radio"/> FTP <input type="checkbox"/> with e-mail notify snap resolution : <input type="text" value="320*240"/> ▾ number of snaps : <input type="text" value="5"/> (1~30) gap between snaps : <input type="text" value="300"/> milli-seconds (70~5000)
Recording :	
Pre-record time :	<input type="text" value="0"/> ▾ second(s)
Record time :	<input type="text" value="15"/> ▾ second(s)
Gap to next detect :	<input type="text" value="15"/> ▾ second(s)
E-mail :	
E-Mail To :	<input type="text"/>
From :	<input type="text"/>
Subject :	<input type="text"/>
Outbound SMTP Server :	<input checked="" type="checkbox"/> Need Authentication Username: <input type="text"/> Password: <input type="text"/>
FTP :	
FTP Server :	<input type="text"/>
Login Name :	<input type="text"/>
Password :	<input type="text"/>
<input type="button" value="OK"/> <input type="button" value="Cancel"/>	

You can enable or disable motion detection function. If you enable motion detection, you can also setup detection sensitivity from one of five sensitivity levels.

When alarm was enabled, user can send the captured images to the pre-set E-Mail or FTP server.

Alert:

- Enable:

You can enable or disable motion detection function.

- Detect Method:

If you enable motion detection, you can also setup detection sensitivity from one of five sensitivity levels.

- Video Record:

While alerted, the Network Camera can send out the recorded file and images to pre-defined e-Mail or FTP.

Recording:

- Pre-record time:

The Network Camera can record the video for seconds before alerted. This function is very useful to know the situation before event happened.

- Record time:

You can choose the duration of the record file.

- Gap to next detect:

You can choose the gap between two events.

E-mail:

- E-Mail To:

E-Mail address of the destination.

- From:

E-Mail address of the source, this Network Camera.

- Subject:

It's a unique number for each Network Camera for identification.

- Outbound SMTP Server:

The address of SMTP server.

FTP:

- FTP Server:

Type the FTP server name or the IP address of the FTP server to upload still images and video file.

- Login Name:

Type the user name for the FTP server.

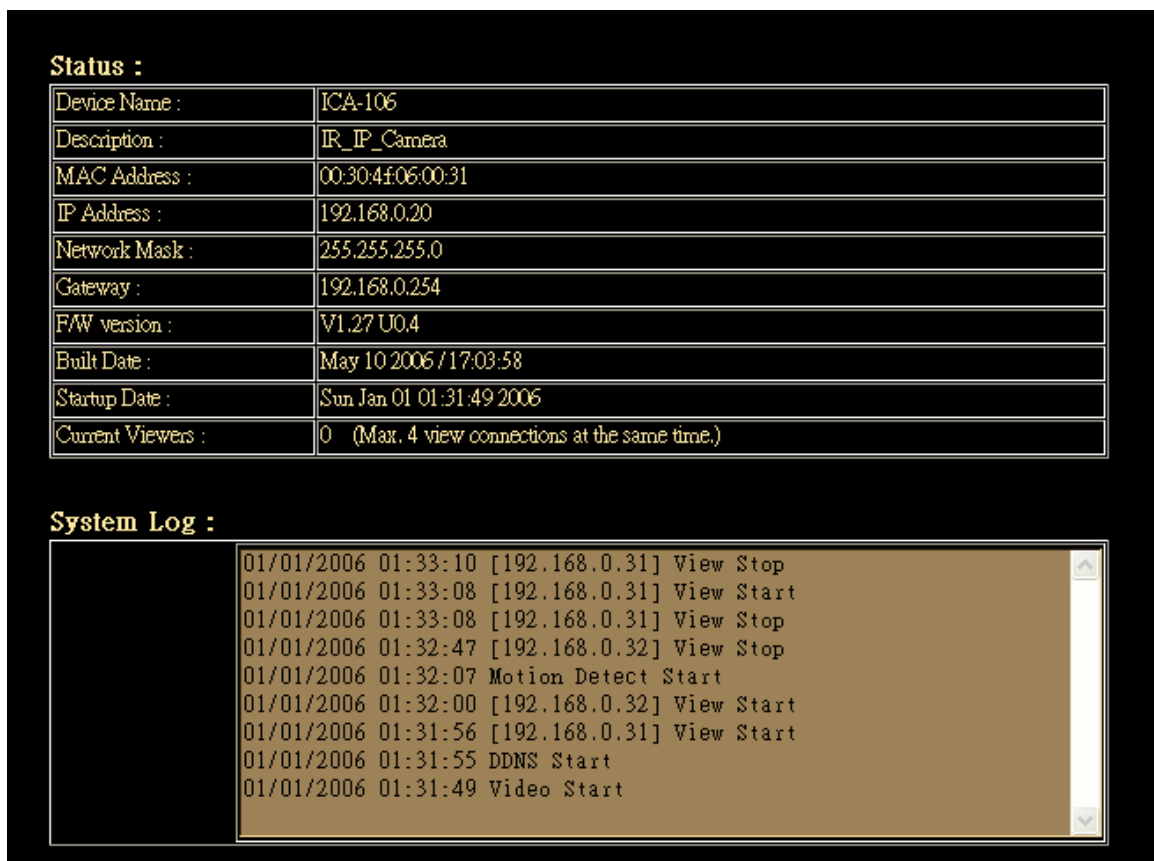
- Password:

Type the password for the FTP server.

Select "OK" to save and enable the setting.

4.2.2.6 Status:

System information, status and log



Status :

Device Name :	ICA-106
Description :	IR_IP_Camera
MAC Address :	00:30:4f:06:00:31
IP Address :	192.168.0.20
Network Mask :	255.255.255.0
Gateway :	192.168.0.254
F/W version :	V1.27 U0.4
Built Date :	May 10 2006 / 17:03:58
Startup Date :	Sun Jan 01 01:31:49 2006
Current Viewers :	0 (Max. 4 view connections at the same time.)

System Log :

```
01/01/2006 01:33:10 [192.168.0.31] View Stop
01/01/2006 01:33:08 [192.168.0.31] View Start
01/01/2006 01:33:08 [192.168.0.31] View Stop
01/01/2006 01:32:47 [192.168.0.32] View Stop
01/01/2006 01:32:07 Motion Detect Start
01/01/2006 01:32:00 [192.168.0.32] View Start
01/01/2006 01:31:56 [192.168.0.31] View Start
01/01/2006 01:31:55 DDNS Start
01/01/2006 01:31:49 Video Start
```

Status:

User can find out a lot of information about the system such as MAC address, IP address, firmware version, and so on. User also can get the number of current viewer of the Network Camera here.

System Log:

User can check the log information of the Network Camera.

4.2.2.7 Factory Default:

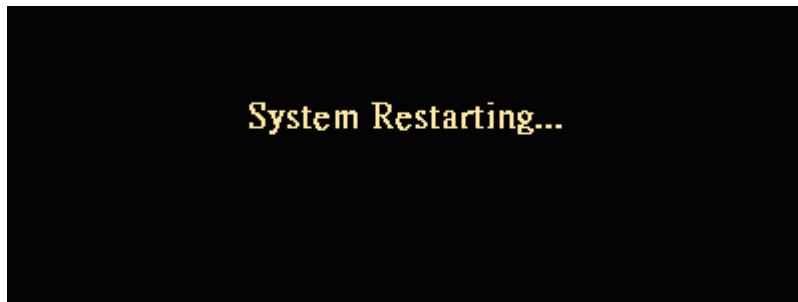
Recall the Network Camera factory default setting



The “*Factory Default*” button will restore to the factory default configuration, all information changed and saved on the flash will be lost, and restore to the factory default setting.

You will be prompt before restore to factory default setting.

Select “*Factory Default*” to continue.



The Network Camera will restore to factory default and reboot again. The Network Camera be connectable again after 20~30 seconds. **Note** that the IP address of this Network Camera will restore to default value: 192.168.0.20.

4.2.2.8 Restart:

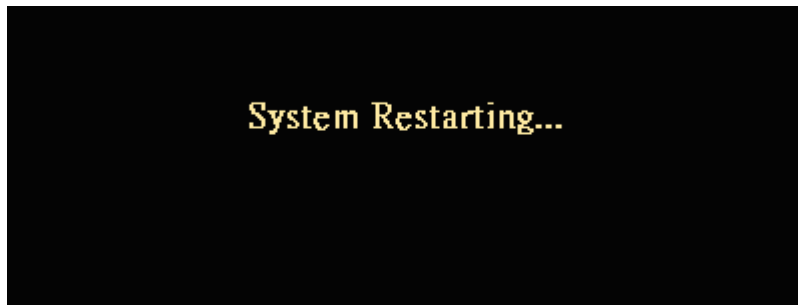
Reboot the Network Camera by hardware reset



The “*Reboot*” button will reboot the Network Camera. It’s useful while the Network Camera got problem.

You will be prompt before restart the Network Camera.

Select “*Restart*” to continue.



The Network Camera will reboot and be connectable again after 20~30 seconds.

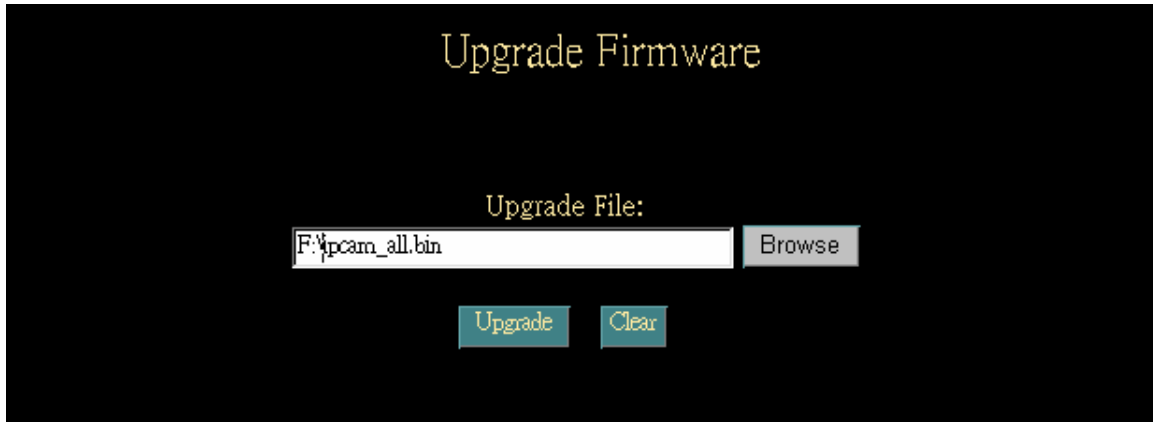
4.2.1.9 Upgrade:

The Network Camera supports firmware upgrades online. Please contact your dealer for the latest firmware version. Unzip this firmware file to binary file and store it into your PC. Then follow the steps as bellows carefully:

1. Close all other application programs which are not necessary for firmware update.
2. Disable “Motion Detection” function.
3. De-select “Video Enable” option.

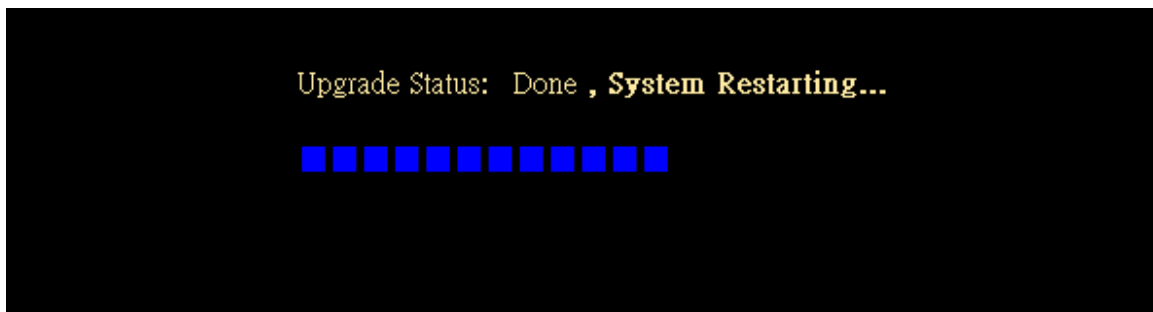
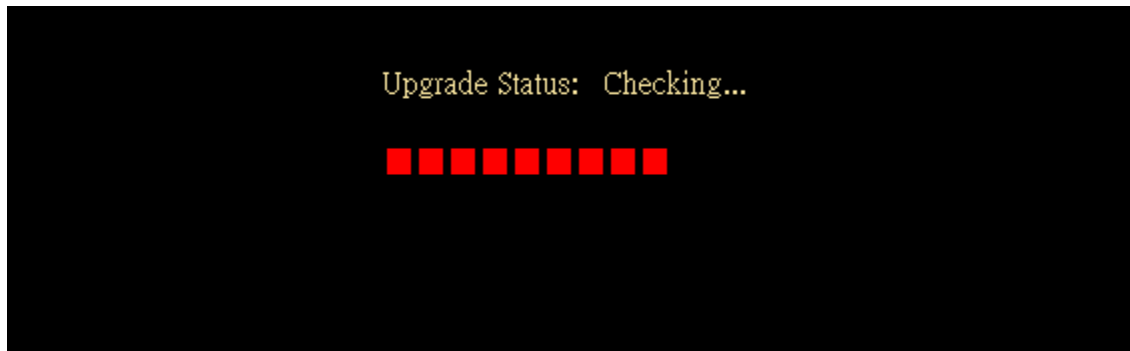
4. Select "Upgrade"

5. Link to the Firmware Upgrade menu as below:



6. Select the Firmware binary file. (It must be make sure that the Firmware only apply to the Network Camera, once update, it will be burned into FLASH ROM of system.)

7. Once the firmware file has been selected, select "Upgrade" button to start it.



The upgrade progress status information will be displayed on the screen.

Warning: The download firmware procedure can not be interrupted. If the

power and/or network connection are broken during the download procedure, it might possibly cause serious damage to the Network Camera. Suggest that do not upgrade firmware via Wireless LAN due to high error rate possibly.

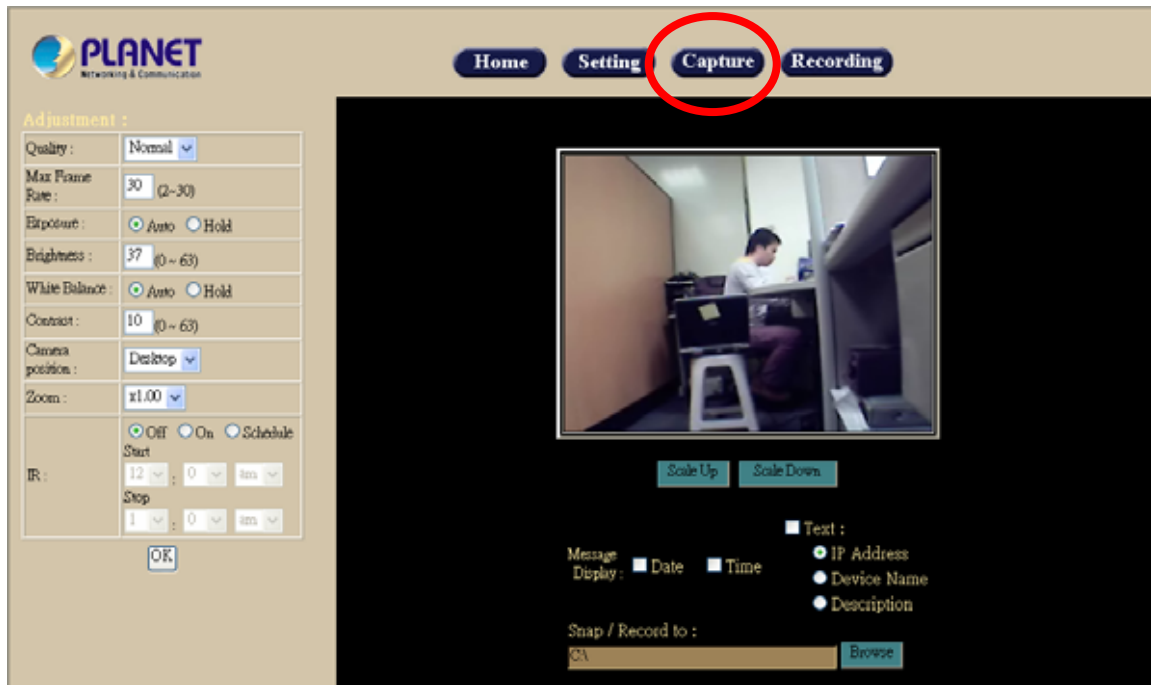
Please be aware that you should not turn off the power during updating the firmware and wait for finish message.

Once the upgrading process completed, the Network Camera will reboot the system automatically.

Note: please wait for 20~30 seconds, and then you can connect to Network Camera again.

4.3 Capture

You can capture current image and save it to storage media. The image is saved in the Bitmap format. Click the “Capture” button to save the current display image into the local PC



If you like to retrieve the saved image, select the file to display it by using any one of graph editing tools.

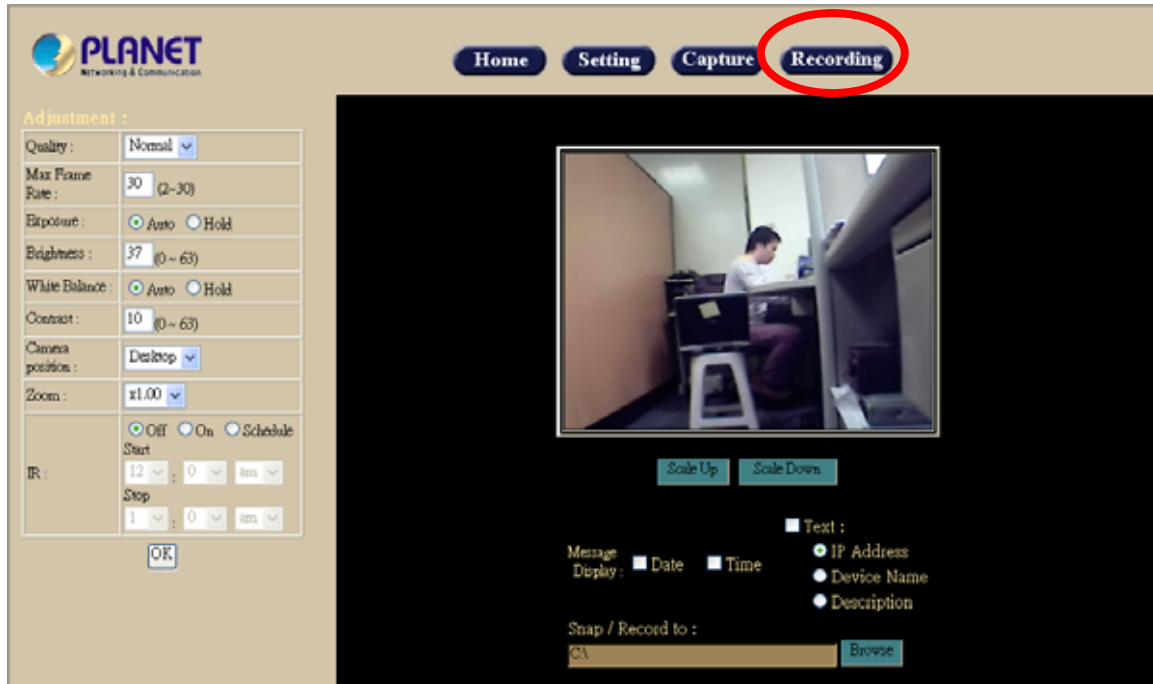
Note:

This function is available for logging-in as an administrator only.

4.4 Recording

You can record the current video stream to storage media. The recorded file is saved in the ASF format.

Press the “Recording” button to start video recording.



After the “Recording” button pressed, it will become **Stop Reco**, you can press this button to stop video recording.

After the stop recording, list the file on the selected saved directory, the file were saved in ASF format.

The ASF files can be display by the standard Windows Media Player, but it needs the DixectX 9.0 or higher version to be installed.

Note:

This function is available for logging-in as an administrator only.

Appendix A: Restore Factory Default Settings

There is a switch hidden in the pinhole under the bottom of Network Camera. It is used to restore the factory default settings. While the Network Camera got problem, sometimes, restarting the Network Camera will make the system back to a normal state. In case the system still got problems after reset, user can restore the factory default settings and install it again.

Restore the Network Camera:

1. Power off the Network Camera.
2. Insert the paper clip or other tool and press and hold the button down continuously.
3. Power on the Network Camera again.
4. Wait at least 10 seconds and release the tool. Then the Network Camera has been restored to default settings.
5. Reconfigure the Network Camera



**Factory
Default Reset**

Note: Restoring the factory default setting will lose the all previous settings forever. User needs to run the IP Finder program to search the Network Camera and configure it to let the Network Camera work properly again.

Appendix B: Troubleshooting & Frequently Asked Questions

Question	Answer or Resolution
Features	
The video and audio codec is adopted in the Network Camera.	The Network Camera utilizes MPEG4 and JPEG dual compression to providing high quality images. MPEG4 is a standard for video compression and JPEG is a standard for image compression. The audio codec is ADPCM compression.
The maximum number of users access Network Camera simultaneously.	The maximum number of users is 4 clients for video streaming.
The Network Camera can be used outdoors or not.	This Network Camera is not weatherproof. It needs to be equipped with a weatherproof case for outdoors using. However, equipped with a weatherproof case might disable the audio function of Network Camera.
Install Network Camera	
Status LED does not light up.	<ul style="list-style-type: none"> • Check and confirm that the standard AC adaptor, included in packaged, is used. Secure the power connector and re power it on again. • If the problem is not solved, the Network Camera might be faulty. Contact your dealer for further help.
The network cabling is required for the Network Camera.	The Network Camera uses Category 5 UTP cable allowing 10 and/or 100 Base-T networking.
The Network Camera will be installed and work if a firewall exists on the network.	If a firewall exists on the network, port 80 is open for ordinary data communication. The Network Camera uses port 80(default) only. This port (or the port you specify from the Configuration screen if you change the default port) needs to be opened on the firewall.
The username and password for the first time or after factory default reset	Username = admin and Password = admin . Note that it's all case sensitivity.
Forgot the username and password	Follow the steps below. <ol style="list-style-type: none"> 1. Restore the factory default setting by press pressing and holding down more than 10 seconds when power on Network Camera. 2. Reconfigure the Network Camera.
Forgot the IP address of	Check IP address of Network Camera by using the MP4 IP

the Network Camera.	Finder.exe program.
MP4 IP Finder.exe program cannot find Network Camera.	<ul style="list-style-type: none"> • Re power the Network Camera if cannot find the unit within 1 minutes. • Do not connect Network Camera over a router. MP4 IP Finder.exe program cannot detect Network Camera over a router. • If IP address is not assigned to the PC which running MP4 IP Finder.exe program, then the program cannot find Network Camera. Make sure that IP address is assigned to the PC properly. • Antivirus software on the PC might interfere with the setup program. Disable the firewall of the antivirus software during setting up Network Camera.
Internet Explorer does not seem to work well with the Network Camera	Make sure that your Internet Explorer is version 5.5 or later. If you are experiencing problems, try upgrading to the latest version of Microsoft's Internet Explorer from the Microsoft webpage at: http://www.microsoft.com/windows/ie .
MP4 IP Finder.exe program fails to save the network parameters.	<ul style="list-style-type: none"> • Network may have trouble. Confirm the parameters and connections of the Network Camera.
Access Network Camera	
Cannot access the login page and other web pages of Network Camera from Internet Explorer	<ul style="list-style-type: none"> • Maybe the IP Address of the Network Camera is already being used by another device or computer. To confirm this possible problem, disconnect the Network Camera from the network first, and then run the PING utility to check it out. • Maybe due to the network cable. Try correcting your network cable and configuration. Test the network interface by connecting a local computer to the Network Camera via a crossover cable. • Make sure the Internet connection and setting is ok. • Make sure enter the IP address of Internet Explorer is correct. If Network Camera has a dynamic address, it may have changed since you last checked it. • Network congestion may prevent the web page appearing quickly. Wait for a while. <p>The IP address and Subnet Mask of the PC and Network Camera must be in the same class of the private IP address on the LAN.</p> <ul style="list-style-type: none"> • Make sure the http port used by the Network Camera, default=80, is forward to the Network Camera's private IP address. • The port number assigned in your Network Camera might not be available via Internet. Check your ISP for available port. • The proxy server may prevent you from connecting directly to Network Camera, set up not to use the proxy server. • Confirm that Default Gateway address is correct. • The router needs Port Forwarding feature. Refer to your

	<p>router's manual for details.</p> <ul style="list-style-type: none"> • Packet Filtering of the router may prohibit access from an external network. Refer to your router's manual for details. • Access Network Camera from the Internet with the global IP address of the router and port number of Network Camera. • Some routers reject the global IP address to access Network Camera on the same LAN. Access with the private IP address and correct port number of Network Camera. • When you use DDNS, you need to set Default Gateway and DNS server address. • If it's not working after above procedure, reset Network Camera to default setting and installed it again. • If the problem is not solved, the Network Camera might be faulty. Contact your dealer for further help.
Image or video does not appear in the main page.	<ul style="list-style-type: none"> • The first time the PC connects to Network Camera, a pop-up Security Warning window will appear to download ActiveX Controls. When using Windows NT, Windows 2000 or Windows XP, log on with an appropriate account that is authorized to install applications. • Network congestion may prevent the Image screen from appearing quickly. You may choose lower resolution to reduce the required bandwidth.
The Network Camera work locally but not externally.	<ul style="list-style-type: none"> • Might be caused from the firewall protection. Check the Internet firewall with your system or network administrator. The firewall may need to have some settings changed in order for the Network Camera to be accessible outside your LAN. • Make sure that the Network Camera isn't conflicting with any other web server running on your LAN. • Check the configuration of the router settings allow the Network Camera to be accessed outside your local LAN.
The unreadable characters are displayed.	Use the operating system of the selected language. Set the Encoding or the Character Set of the selected language on the Internet Explorer.
Frame rate is slower than the setting.	<ul style="list-style-type: none"> • The traffic of the network and the object of the image affect the frame rate. The network congestion causes frame rate slower than the setting. • When more than one client was viewing, the frame rate becomes slower. • Ethernet switching hub can smooth the frame rate especially in viewing on the Multi-Camera screen.
Blank screen or very slow video when audio is enabled.	<ul style="list-style-type: none"> • Your connection to the Network Camera does not have enough bandwidth to support a higher frame rate for the streamed image size. Try reducing the video streaming size to 160x120 or 320x240 and/or disabling audio. • Audio will consume 32 kbps. Disable audio to improve video. Your Internet connection may not have enough bandwidth to support streaming audio from the Network Camera.
Image Transfer on	<ul style="list-style-type: none"> • Default Gateway and DNS server address should be set up

e-mail or FTP does not work.	correctly. <ul style="list-style-type: none"> • If FTP does not work properly, ask your ISP or network administrator about the transferring mode of FTP server.
Video Quality of Network Camera	
The focus on the Network Camera is bad.	<ul style="list-style-type: none"> • The lens is dirty or dust is attached. Clean the lens with lens cleaner. Or adjust the camera focus manually. • The image may be out of focus, if the object is too near. Move the object away from Network Camera.
The color of the image is poor or strange.	<ul style="list-style-type: none"> • Adjust White Balance. • To insure the images you are viewing are the best they can be, set the Display property setting (color quality) to 16bit at least and 24 bit or higher if possible within your computer. • The configuration on the Network Camera image display is incorrect. You need to adjust the image related parameters such as brightness and contrast properly.
Image flickers.	<ul style="list-style-type: none"> • Wrong power line frequency makes images flicker. Make sure the 50 or 60Hz format of your Network Camera.
Noisy images occur.	The video images might be noisy if the Network Camera is located in a low light environment. Make the condition around the Network Camera brighter.
Miscellaneous	
How to Reboot the Network Camera	If you just want to reboot system without change anything. Go to Setting page and click Restart linking directly, then system will reboot again.
Can not play the recorded ASF file	Have installed Microsoft®'s DirectX 9.0 or later and use the Windows Media Player 9 or later to play the ASF filed recorded by the Network Camera.

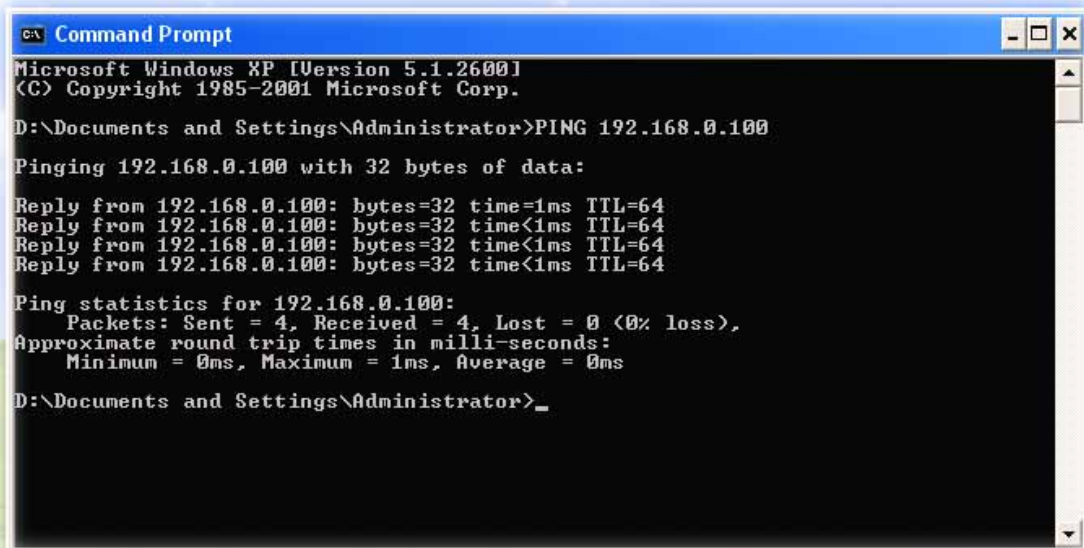
Appendix C: PING IP Address

The PING (stands for Packet Internet Groper) command is used to detect whether a specific IP address is accessible by sending a packet to the specific address and waiting for a reply. It's also a very useful tool to confirm Network Camera installed or if the IP address conflicts with any other devices over the network.

If you want to make sure the IP address of Network Camera, utilize the PING command as follows:

- Start a DOS window.
- Type ping x.x.x.x, where x.x.x.x is the IP address of the Network Camera.

The replies, as illustrated below, will provide an explanation to the problem.



```
c:\ Command Prompt
Microsoft Windows XP [Version 5.1.2600]
(C) Copyright 1985-2001 Microsoft Corp.

D:\Documents and Settings\Administrator>PING 192.168.0.100

Pinging 192.168.0.100 with 32 bytes of data:

Reply from 192.168.0.100: bytes=32 time=1ms TTL=64
Reply from 192.168.0.100: bytes=32 time<1ms TTL=64
Reply from 192.168.0.100: bytes=32 time<1ms TTL=64
Reply from 192.168.0.100: bytes=32 time<1ms TTL=64

Ping statistics for 192.168.0.100:
    Packets: Sent = 4, Received = 4, Lost = 0 (0% loss),
    Approximate round trip times in milli-seconds:
        Minimum = 0ms, Maximum = 1ms, Average = 0ms

D:\Documents and Settings\Administrator>_
```

If you want to detect any other devices conflicts with the IP address of Network Camera, also can utilize the PING command but you must disconnect the Network Camera from the network first.

Appendix D: Bandwidth

Estimation

The frame rate of video transmitted from the Network Camera depends on connection bandwidth between client and server, video resolution, and quality setting of server. Here is a guideline to help you roughly estimate the bandwidth requirements form your Network Camera.

The required bandwidth depends on content of video source. The slow motion video will produce smaller bit rate generally and fast motion will produce higher bit rate vice versa. Actual results generated by the Network Camera may be varying.

Image Resolution	Average range of Data Sizes for JPEG mode	Average bit rate for MPEG4 mode
160 x 120 (QQVGA)	3 ~ 6k byte per frame	100kbps~256kbps @ 30fps
320 x 240 (QVGA)	8 ~ 20k byte per frame	300kbps~600kbps @ 30fps
640 x 480 (VGA)	20 ~ 50K byte per frame	400kbps~1000kbps @ 12fps

Note: Audio streaming will take bandwidth around 32 kbps. Most ADSL/Cable modem upload speeds may not even reach up to 128 kbps. Thus, you may not be able to receive any video while streaming audio on a 128 kbps or lower connection. Even though the upload speed is more than 128kbps, for optimal video performance, disabling audio streaming will get better video performance.

Appendix E: Specifications

Model	Network Camera
Control Interface	Internet Explorer or Multi-channel software player
Operating Humidity	10% ~ 80%
Operating Temperature	5°C to 40°C
Power Consumption	4W max. (WLAN model and IR LEDs on)
Power Supply	5V DC ± 10%
Dimension	Main body: 100*62mm (DXH)
Camera Module	
Image Pick-up Device	1/4" Micron CMOS image sensor
Effective Picture Elements	640*480 (H*V)
S/N Ratio	More than 45 dB
Auto Exposure	Yes
Auto White Balance	Yes
Camera Position	Desktop / Ceiling /Mirror
Power Line Frequency	50 / 60 Hz
Sharpness	Strong / Normal / Soft
IP Module	
Codec	MPEG4 and MJPEG, 3 levels
Resolution	640*480, 320*240, 162*120
Frame Rate	Up to 30fps for QQVGA and QVGA resolutions Up to 12fps for VGA resolution
Audio Streaming	Yes
Compatibility	Windows 2000, XP and above
LAN I/F	10/100M
RAM	64Mb SDRAM
Flash	16Mb NOR Flash Memory
Image Storing Memory	By RAM

Operating System	eCos
Type Of IP Address Needed	Statistic or Dynamic
Notification	Email, FTP
Firmware Upgrade	Via Ethernet
Security	3 Levels
Viewer	Microsoft® Internet Explorer 5.5 or later
Digital zoom	400% (Maximum)
Networking Protocol	TCP/IP, HTTP, SMTP, FTP, NTP, DNS, DDNS, ARP and DHCP, UPnP

Appendix F: Time Zone Table

GMT stands for Greenwich Mean Time which is the global time that all time zones are measured from.

(GMT-12:00) International Date Line West
(GMT-11:00) Midway Island, Samoa
(GMT-10:00) Hawaii
(GMT-09:00) Alaska
(GMT-08:00) Pacific Time (US & Canada); Tijuana
(GMT-07:00) Arizona
(GMT-07:00) Chihuahua, La Paz, Mazatlan
(GMT-07:00) Mountain Time (US & Canada)
(GMT-06:00) Central America
(GMT-06:00) Central Time (US & Canada)
(GMT-06:00) Guadalajara, Mexico City, Monterrey
(GMT-06:00) Saskatchewan
(GMT-05:00) Bogota, Lima, Quito
(GMT-05:00) Eastern Time (US & Canada)
(GMT-05:00) Indiana (East)
(GMT-04:00) Atlantic Time (Canada)
(GMT-04:00) Caracas, La Paz
(GMT-04:00) Santiago
(GMT-03:30) Newfoundland
(GMT-03:00) Brasilia
(GMT-03:00) Buenos Aires, Georgetown
(GMT-03:00) Greenland
(GMT-02:00) Mid-Atlantic
(GMT-01:00) Azores
(GMT-01:00) Cape Verde Is.
(GMT) Casablanca, Monrovia
(GMT) Greenwich Mean Time : Dublin, Edinburgh, Lisbon, London
(GMT+01:00) Amsterdam, Berlin, Bern, Rome, Stockholm, Vienna
(GMT+01:00) Belgrade, Bratislava, Budapest, Ljubljana, Prague
(GMT+01:00) Brussels, Copenhagen, Madrid, Paris
(GMT+01:00) Sarajevo, Skopje, Warsaw, Zagreb
(GMT+01:00) West Central Africa
(GMT+02:00) Athens, Istanbul, Minsk
(GMT+02:00) Bucharest
(GMT+02:00) Cairo
(GMT+02:00) Harare, Pretoria
(GMT+02:00) Helsinki, Kyiv, Riga, Sofia, Tallinn, Vilnius
(GMT+02:00) Jerusalem
(GMT+03:00) Baghdad
(GMT+03:00) Kuwait, Riyadh
(GMT+03:00) Moscow, St. Petersburg, Volgograd
(GMT+03:00) Nairobi

(GMT+03:30) Tehran
(GMT+04:00) Abu Dhabi, Muscat
(GMT+04:00) Baku, Tbilisi, Yerevan
(GMT+04:30) Kabul
(GMT+05:00) Ekaterinburg
(GMT+05:00) Islamabad, Karachi, Tashkent
(GMT+05:30) Chennai, Kolkata, Mumbai, New Delhi
(GMT+05:45) Kathmandu
(GMT+06:00) Almaty, Novosibirsk
(GMT+06:00) Astana, Dhaka
(GMT+06:00) Sri Jayawardenepura
(GMT+06:30) Rangoon
(GMT+07:00) Bangkok, Hanoi, Jakarta
(GMT+07:00) Krasnoyarsk
(GMT+08:00) Beijing, Chongqing, Hong Kong, Urumqi
(GMT+08:00) Irkutsk, Ulaan Bataar
(GMT+08:00) Kuala Lumpur, Singapore
(GMT+08:00) Perth
(GMT+08:00) Taipei
(GMT+09:00) Osaka, Sapporo, Tokyo
(GMT+09:00) Seoul
(GMT+09:00) Yakutsk
(GMT+09:30) Adelaide
(GMT+09:30) Darwin
(GMT+10:00) Brisbane
(GMT+10:00) Canberra, Melbourne, Sydney
(GMT+10:00) Guam, Port Moresby
(GMT+10:00) Hobart
(GMT+10:00) Vladivostok
(GMT+11:00) Magadan, Solomon Is., New Caledonia
(GMT+12:00) Auckland, Wellington
(GMT+12:00) Fiji, Kamchatka, Marshall Is.
(GMT+13:00) Nuku'alofa

Appendix G: DDNS Application

1. Preface

If you have a Cable modem, xDSL, ISDN or Dialup, this is a great way to host your own Network Camera. Get your own domain like www.yourname.com*, www.yourname.com.tw* etc. (Note: This domain must be registered via registration authorities such as Network Solutions, DirectNIC, Register.com etc). Your domain name's dynamic IP address is automatically tracked by a DDNS server.

Host your own Network Camera and much more no matter what your computer's IP address may be and even if you have dialup, DSL or cable modem internet connection where your computer's IP address changes all the time!! DDNS service supports all top level domain names including but not limited to .com, .net, .org, .to, .uk etc.

2. Ethernet Network Environment

Normally, a DDNS service is only necessary for the users that could only obtain dynamic IP addresses. As to the users that could obtain the static valid IP address, they do not usually have to apply the DDNS service. Before we decide if DDNS is necessary for the users, we have to check what kind of Ethernet network environment we have to install our Network Camera on.

(1) Environment of Fixed Valid IP Network

If users could obtain valid IP addresses, they could save the effort to apply DDNS service. Because the IP address in this environment is fixed, users could input the IP address or domain name of demo site directly in the IE browser.

(2) Environment of Dynamic IP Network

If users is under an environment of dynamic IP network (Dial-up ADSL), they have to apply a domain name in advance. Then apply DDNS service. Finally setup the necessary information of DDNS of the Network Camera in order to let the outside administrator be able to access through internet.

3. Application Steps—DDNS & Domain Name

(1). Visit the following web site: <http://www.dyndns.org/> (Pink No.1)

(2). Click "**Account**" (Pink No. 2)



(3). After the columns show up at the left side, click **“Create Account”**.



- (4). Fill the application agreement and necessary information.
- Input Name
 - E-mail input and confirmation
 - Password input and confirmation
 - Submit all the input information and finish creating a account

Create Account

Please complete the form below to create your account. You will receive an e-mail containing instructions to activate your account. If you do not follow these directions within 48 hours, you will need to recreate your account.

Policy Last Modified: May 4, 2004

1. ACKNOWLEDGMENT AND ACCEPTANCE OF TERMS OF SERVICE

All services provided by Dynamic Network Services, Inc. ("DynDNS") are provided to you (the "Member") under the Terms and Conditions set forth in this Acceptable Use Policy ("AUP") and any other operating rules and policies set forth by DynDNS. The AUP comprises

I have read and agree to the Acceptable Use Policy above 

Username

Your username will be used to login to your account and make changes.

Username:

← **Input login name**

E-mail Address

The e-mail address you enter must be valid. Instructions to activate your account will be sent to the e-mail address provided. You must keep this address current and accounts with invalid e-mail addresses will be removed with no warning. We do not sell our list to anyone.

Read more about our [privacy policy](#)

E-Mail Address:

← **Input e-mail address**

Confirm E-Mail Address:

← **Confirm e-mail address**

Password

The password you enter will be used to access your account. It must be more than 5 characters and cannot be your username.

Password:

← **Input login password**

Confirm Password:

← **Confirm login password**

Submit →

Create Account

Reset Form

- (5). Check your e-mail mailbox. There will be an e-mail with a title "Your DynDNS.org Account Information". Click the hyperlink address to confirm the DDNS service that you just applied. Then DDNS you applied activated.

副本:

主旨: Your DynDNS.org Account Information

Your DynDNS.org user account 'longteklewis' has been created. You must visit the confirmation page to complete the account creation process.

Our basic service offerings are free, but they are supported by our premium services. See [our pricing page](#) for more information.

To confirm your account, please go to the address below: **Click to confirm**

<https://www.dyndns.org/account/confirm/dDbT1b0mO3f-MvffprlGQ>

Please note: If you did not sign up for this account, this will be the only communication you receive. Your e-mail addresses are kept on file. We apologize for any inconvenience this correspondence may have caused you by visiting our site and requesting an account.

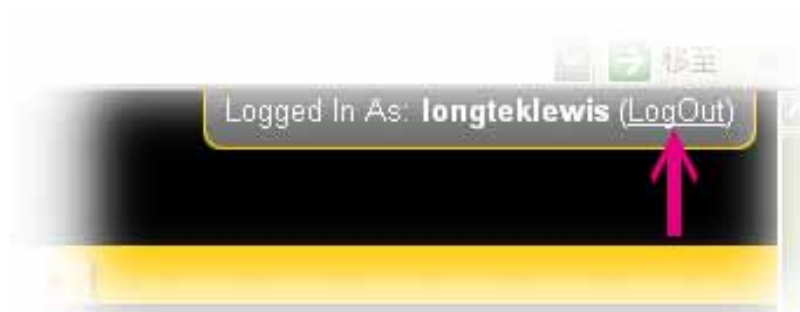
Sincerely,

The Dynamic Network Services Support Department support@dyndns.org

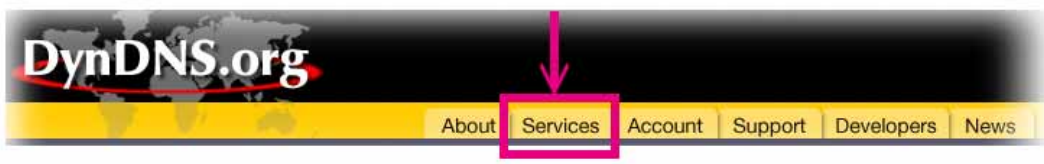
- (6). Enter the web page <http://www.dyndns.org/> again. Input your username and password that you just applied to login administration interface of DDNS service.



- (7). If the correct username and password are input, you can see the following picture at the top-right of the login page.



- (8). Click the "Services".



- (9). Click the "Dynamic DNS" and then click the "Add a host".



(10). We could create a domain name without any charge at this step. First, we input the host name. (Pink No.1) Then we pick a domain that is easy to remember. (Pink No.2) Finally, click the “Add Host” to submit the domain name information. (Pink No.3)

The screenshot shows a web form titled "New Dynamic DNS Host". The form contains the following fields and elements:

- Hostname:** A text input field with a pink arrow labeled "1" pointing to it.
- IP Address:** A text input field.
- Enable Wildcard:** A checkbox.
- Mail Exchanger (optional):** A text input field.
- Domain Selection:** A dropdown menu with a pink arrow labeled "2" pointing to it. The dropdown is open, showing a list of domain options including dyndns.biz, dyndns.info, dyndns.org, dyndns.tv, dyndns.ws, game-host.org, game-server.cc, gotdns.com, gotdns.org, homedns.org, homeftp.net, homeftp.org, homeip.net, homelinux.com, homelinux.net, homelinux.org, homeunix.com, homeunix.net, homeunix.org, is-a-geek.com, and is-a-geek.net.
- Buttons:** An "Add Host" button with a pink arrow labeled "3" pointing to it, and a "Reset For" button.

At the bottom of the form, there is a copyright notice: "Copyright © 1999-2004 Dynamic Net" and links for "Privacy Policy" and "Acceptable Use Policy".

4. Setup the DDNS

At last, users have to enter the web page of Network Camera and setup the necessary information of DDNS after the application of DDNS service. Please check the user manual to access the DDNS pages. After saving the modification, restart the device. The external users could browse the Network Camera by the input of their domain name.

Free Manuals Download Website

<http://myh66.com>

<http://usermanuals.us>

<http://www.somanuals.com>

<http://www.4manuals.cc>

<http://www.manual-lib.com>

<http://www.404manual.com>

<http://www.luxmanual.com>

<http://aubethermostatmanual.com>

Golf course search by state

<http://golfingnear.com>

Email search by domain

<http://emailbydomain.com>

Auto manuals search

<http://auto.somanuals.com>

TV manuals search

<http://tv.somanuals.com>