

Routing  
WGS3-Series

# Layer 3 Managed Ethernet Switch

Highly Stable Layer 3 Routing Performance



WGS3-2820 / WGS3-5220 / WGS3-24000 / WGS3-24240

## Quick Installation Guide

# **PLANET Layer3 Managed Switch**

**WGS3-2820 / WGS3-5220**

**WGS3-24000 / WGS3-24240**

**Quick Installation Guide**

## Table of Contents

1. Package Content .....	3
2. Requirements .....	4
3. Terminal Setup .....	5
4. Logon to the Console .....	6
5. Configure IP address .....	7
6. Start Web Management .....	9
Customer Support .....	12

---

## 1. Package Content

Thank you for purchasing PLANET Layer 3 Managed Switch, WGS3-2820/WGS3-5220/WGS3-24000/WGS3-24240. Terms of “**WGS3 Layer 3 Switch**” means the Switches mentioned titled in the cover page of this Quick installation guide, i.e. WGS3-2820, WGS3-5220 and WGS3-24000.

Open the box of the **Layer 3 Switch** and carefully unpack it. The box should contain the following items:

- The WGS3 Layer 3 Switch x 1
- User's manual CD x 1
- Quick installation guide x 1
- RS232 cable x 1
- Rubber feet x 4
- Two rack-mounting brackets with attachment screws x 1
- Power Cord x 1

If any item is found missing or damaged, please contact your local reseller for replacement.

## 2. Requirements

- Workstations of subscribers running Windows 98/ME, NT4.0, 2000/XP, MAC OS9 or later, Linux, UNIX or other platform compatible with TCP/IP protocols.
- Workstation installed with Ethernet NIC (Network Card)
- **Serial Port connect** (Terminal)
  - ▶ Above PC with COM Port (DB-9)
- **Ethernet Port connect**
  - ▶ Network cables - Use standard network (UTP) cables with RJ45 connectors.
  - ▶ Above PC installed with WEB Browser and JAVA runtime environment Plug-in

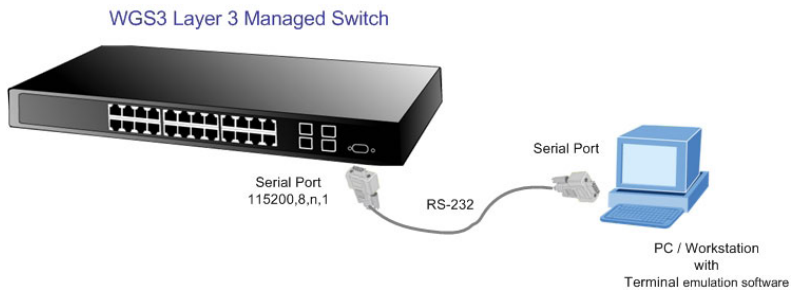


Note

It is recommended to use Internet Explorer 6.0 or above to access WGS3 Layer 3 Switch.

### 3. Terminal Setup

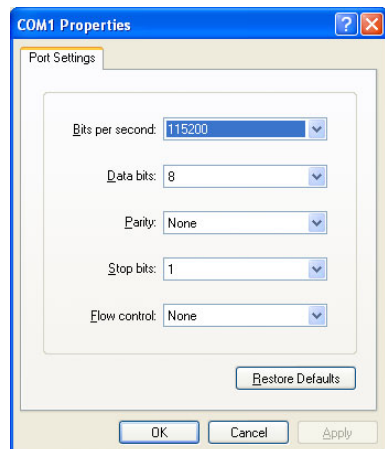
To configure the system, connect a serial cable to a **COM port** on a PC or notebook computer and to serial (console) port of the WGS3 Layer 3 Switch. The console port of the WGS3 Layer 3 Switch is DCE already, so that you can connect the console port directly through PC without the need of Null Modem.



A terminal program is required to make the software connection to the WGS3 Layer 3 Switch. Windows' **Hyper Terminal** program may be a good choice. The Hyper Terminal can be accessed from the **Start** menu.

1. Click **START**, then **Programs, Accessories** and then **Hyper Terminal**.
2. When the following screen appears, make sure that the COM port should be configured as:

- Baud rate: 115200
- Parity: None
- Data bits: 8
- Stop bits: 1
- Flow Control: None



## 4. Logon to the Console

Once the terminal has connected to the device, power on the WGS3 Layer 3 Switch, the terminal will display that it is running testing procedures.

Then, the following message asks the login user name and password. The factory default user name and password as following, and the login screen in figure 4-1 appears.

```
User name: admin
Password: admin
```

```
Select startup mode. If no selection is made within 3 seconds,
the Tarpon-100 Application will start automatically...

Tarpon-100 Startup -- Main Menu

1 - Start Tarpon-100 Application
2 - Display Utility Menu
Select (1, 2):
Mounting impfs at /mnt/application...done.
Copying FASTPATH executables to RAM...
Starting Tarpon-100 application...

FASTPATH starting...-System MAC : 0:30:4f:6:23:6
|FASTPATH Software Version : 1.5.0.0

determine_ids: Setting up Board with 5695
\PCI device BCM5695_B0 attached as unit 0.
-PCI device BCM5695_B0 attached as unit 1.
started!

(Unit 1)>
User:
```

Figure 4-1 WGS3 Layer 3 Switch Console Login screen



Note

1. For security reason, please change and memorize the new password after this first setup.
2. Only accept command in lowercase letter under console interface.

## 5. Configure IP address

The WGS3 Layer 3 Switch is shipped with default IP address as following.

```
IP Address : 192.168.1.254
Subnet Mask : 255.255.255.0
```

To check the current IP address or modify a new IP address for the Switch, please use the procedures as follow:

### ■ Show the current IP address

1. On "**Routing>**" prompt, enter "**show network**".
2. The screen displays the current IP address, Subnet Mask and Gateway. As show in Figure 5-1.

```
(Routing) #show network
IP Address..... 192.168.1.254
Subnet Mask..... 255.255.255.0
Default Gateway..... 0.0.0.0
Burned In MAC Address..... 00:30:4f:06:23:06
Locally Administered MAC Address..... 00:00:00:00:00:00
MAC Address Type..... Burned In
Network Configuration Protocol Current..... None
Management VLAN ID..... 1
Web Mode..... Enable
Java Mode..... Enable

(Routing) #_
```

Figure 5-1 Show IP information screen

### ■ Configure IP address

3. On "**Routing>**" prompt, type "**enable**" to enter the Privileged Exec Mode.
4. A Password required message prompt. For the first time login, press **Enter** button. (With the default setting, the enable password is empty.)
5. On "**Routing#**" prompt, enter the following command and press **<Enter>**. As show in Figure 5-2.

```
Routing # network parms 192.168.1.100 255.255.255.0
```

The previous command would apply the follow settings for the Switch.



IP: 192.168.1.100  
Subnet Mask: 255.255.255.0

```
(Routing) #network parms ?
<ipaddr>          Enter the IP Address.
(Routing) #network parms 192.168.1.100 255.255.255.0
(Routing) #show network
IP Address..... 192.168.1.100
Subnet Mask..... 255.255.255.0
Default Gateway..... 0.0.0.0
Burned In MAC Address..... 00:30:4f:06:23:06
Locally Administered MAC Address..... 00:00:00:00:00:00
MAC Address Type..... Burned In
Network Configuration Protocol Current..... None
Management VLAN ID..... 1
Web Mode..... Enable
Java Mode..... Enable
(Routing) #_
```

**Figure 5-2** Set IP address screen

6. Repeat Step 1 to check if the IP address is changed.

If the IP is successfully configured, the Switch will apply the new IP address setting immediately. You can access the Web interface of WGS3 Layer 3 Switch through the new IP address.



Note

If you do not familiar with console command or the related parameter, enter “**help**” anytime in console to get the help description.

## 6. Start Web Management

The following shows how to startup the Web Management of the WGS3 Layer 3 Switch. Note the WGS3 Layer 3 Switch is configured through an Ethernet connection, please make sure the manager PC must be set on the same IP subnet address.

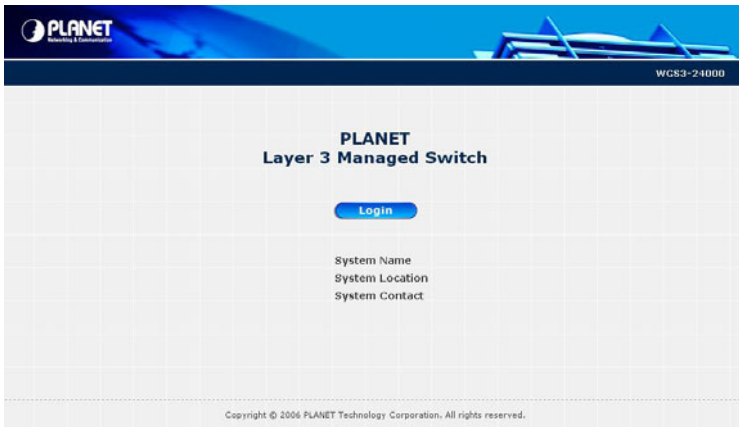
For example, the default IP address of the WGS3 Layer 3 Switch is 192.168.1.254, then the manager PC should be set at 192.168.1.x (where x is a number between 1 and 253 and the default subnet mask is 255.255.255.0).



### Login the Managed Switch

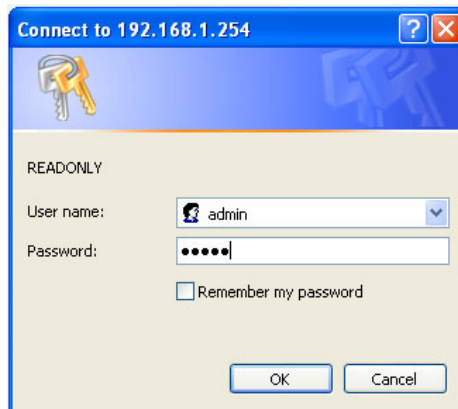
1. Use Internet Explorer 6.0 or above Web browser, enter IP address ***http://192.168.1.254*** (the factory-default IP address or that you have just changed in console) to access the Web interface.

2. When the Login page is shown, press the button. The screen appears as Figure 6-1.



**Figure 6-1** Web Login Page screen

3. When the following dialog box appears, please enter the default user name "admin" and password "admin" (or the username/password you have changed via console). The login screen in Figure 6-2 appears.



**Figure 6-2** Login screen

4. After entering the username and password, the main screen appears as Figure 6-3.

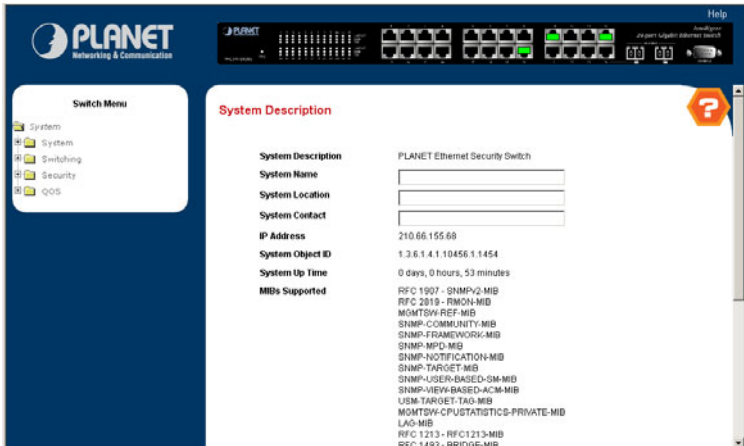


Figure 6-3 Web Main Screen of WGS3 Layer 3 Switch

5. Now, you can use the Web management interface to continue the Switch management. The Switch Menu on the left of the Web page let you access all the commands and statistics the Switch provides. Please refer to the user manual for more.

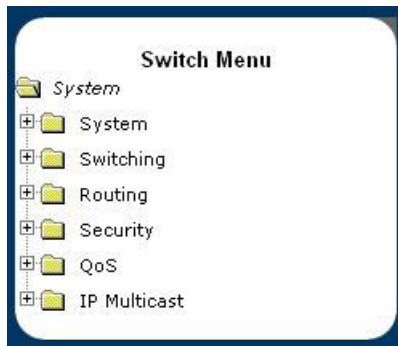


Figure 6-4 Switch Menu



Note

If you do not familiar with Switch functions or the related parameter, press "Help icon" anytime in right-top of the Web page to get the help description.

---

## ***Customer Support***

Thank you for purchase PLANET products. You can browse our online FAQ resource at the PLANET Web site first to check if it could solve you issue. If you need more support information, please contact PLANET switch support team.

PLANET online FAQ:

<http://www.planet.com.tw/en/support/faq.php?type=1>

Switch support team mail address:

[support\\_switch@planet.com.tw](mailto:support_switch@planet.com.tw)

[www.planet.com.tw](http://www.planet.com.tw)

LAN Switches



**PLANET Technology Corp.**

2011-A96020-003



## Free Manuals Download Website

<http://myh66.com>

<http://usermanuals.us>

<http://www.somanuals.com>

<http://www.4manuals.cc>

<http://www.manual-lib.com>

<http://www.404manual.com>

<http://www.luxmanual.com>

<http://aubethermostatmanual.com>

Golf course search by state

<http://golfingnear.com>

Email search by domain

<http://emailbydomain.com>

Auto manuals search

<http://auto.somanuals.com>

TV manuals search

<http://tv.somanuals.com>