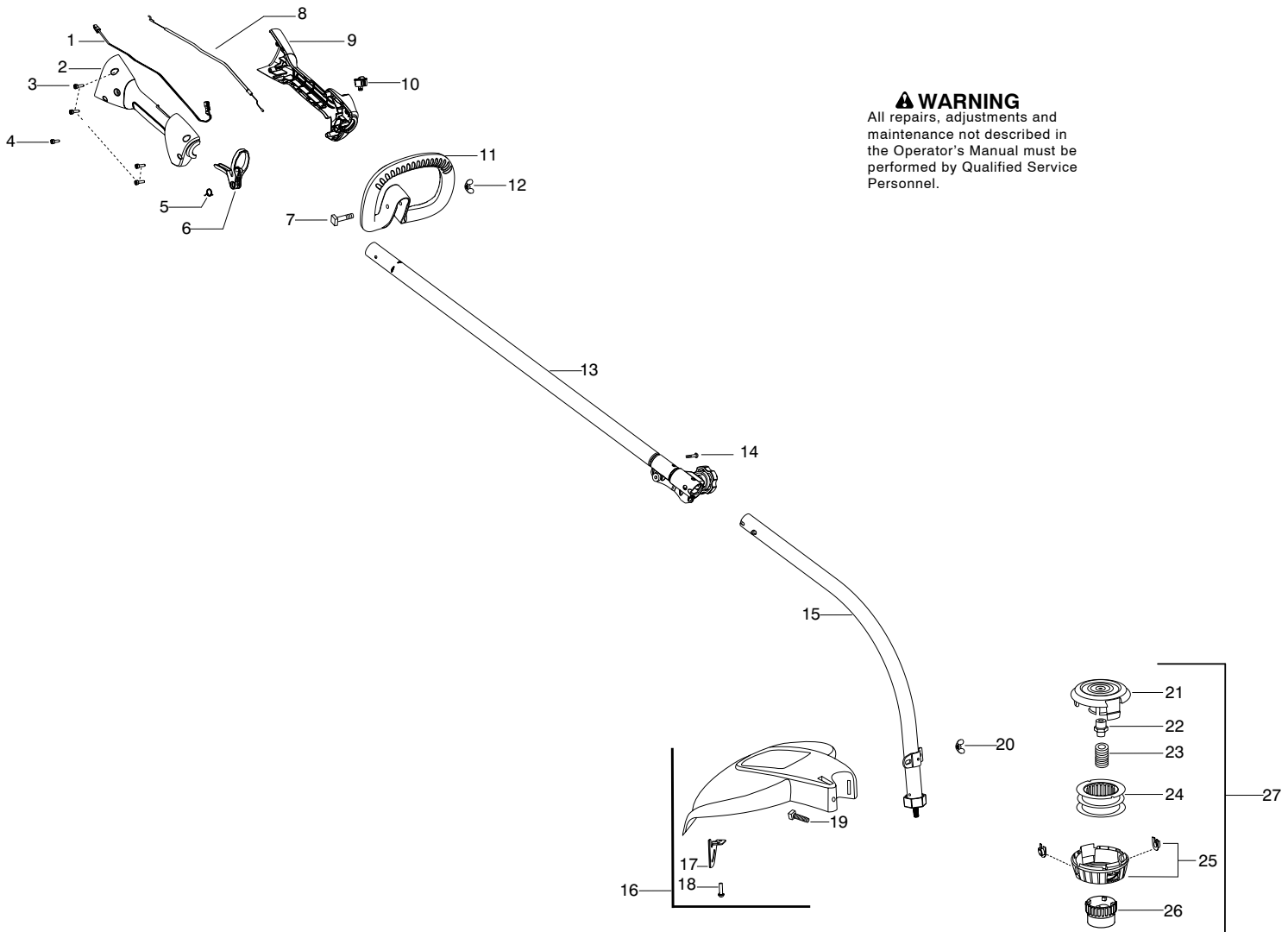


|                                    |  |  |  |
|------------------------------------|--|--|--|
| <b>Parts List No.</b><br>545192174 |  | <h1>Poulan PRO<sup>®</sup></h1> PARTS LIST | <b>MODEL</b><br>PP033 (US/CAN)   |
| <b>Date</b><br>4/15/09             | <b>Replaces</b><br>545192174 - 4/01/09 |  | <b>NOTE :</b> Illustration may differ from actual model due to design changes. |



**⚠ WARNING**  
All repairs, adjustments and maintenance not described in the Operator's Manual must be performed by Qualified Service Personnel.

| Ref. | Part No.  | Description                       | Ref.             | Part No.    | Description  |
|------|-----------|-----------------------------------|------------------|-------------|--|
| 1.   | 545191801 | Assy-Switch Wire                  | 20.              | 530016152   | Wingnut - 1/4-20                                     |
| 2.   | 545187602 | Housing-Throttle (RH)             | 21.              | 537419303   | Housing  |
| 3.   | 530016449 | Screw M4 x 1.75                   | 22.              | 537419901   | Adapter  |
| 4.   | 530015805 | Screw 10-14 x 1/2                 | 23.              | 537338801   | Spring   |
| 5.   | 545190001 | Spring-Trigger                    | 24.              | 545080801   | Assy - Spool   |
| 6.   | 545008073 | Kit - Trigger (Incl. 5)           | 25.              | 545003365   | Kit - Cover and Eyelet                               |
| 7.   | 530015786 | Bolt - 1/4-20 x 2                 | 26.              | 537419601   | Knob   |
| 8.   | 545199301 | Assy - Throttle Cable             | 27.              | 952701717   | Accy. - TNG 7 Cutting Head (Incl. 21,22,23,24,25,26) |
| 9.   | 545187502 | Housing-Throttle (LH)             |                  |             |  |
| 10.  | 545030601 | Kit-Switch                        | <b>Not Shown</b> |             |  |
| 11.  | 530058583 | Assy - Handle Assist (Incl. 7,12) |                  |             |  |
| 12.  | 530016152 | Wingnut - 1/4-20                  |                  |             |  |
| 13.  | 545003366 | Kit-Driveshaft Upper (Incl.#14)   |                  |             |  |
| 14.  | 530016344 | Screw - 12-24 x .480              |                  |             |  |
| 15.  | 545024301 | Kit-Driveshaft Lower              |                  |             |  |
| 16.  | 530071824 | Kit-Shield (Incl. 17,18,19,20)    |                  |             |  |
| 17.  | 530052287 | Limiters-Line                     |                  |             |  |
| 18.  | 530015814 | Screw - 10-14 x 3/4               |                  |             |  |
| 19.  | 530015820 | Bolt - 1/4-20 x 1-1/4             |                  |             |  |
|      |           |                                   |                  | 545186845   | Manual   |
|      |           |                                   |                  | 545209101   | Decal-Shaft Warning (lower)                          |
|      |           |                                   |                  | ✓ 545167716 | Decal-Shaft Warning (upper)                          |

✓ = New Part Number For This IPL

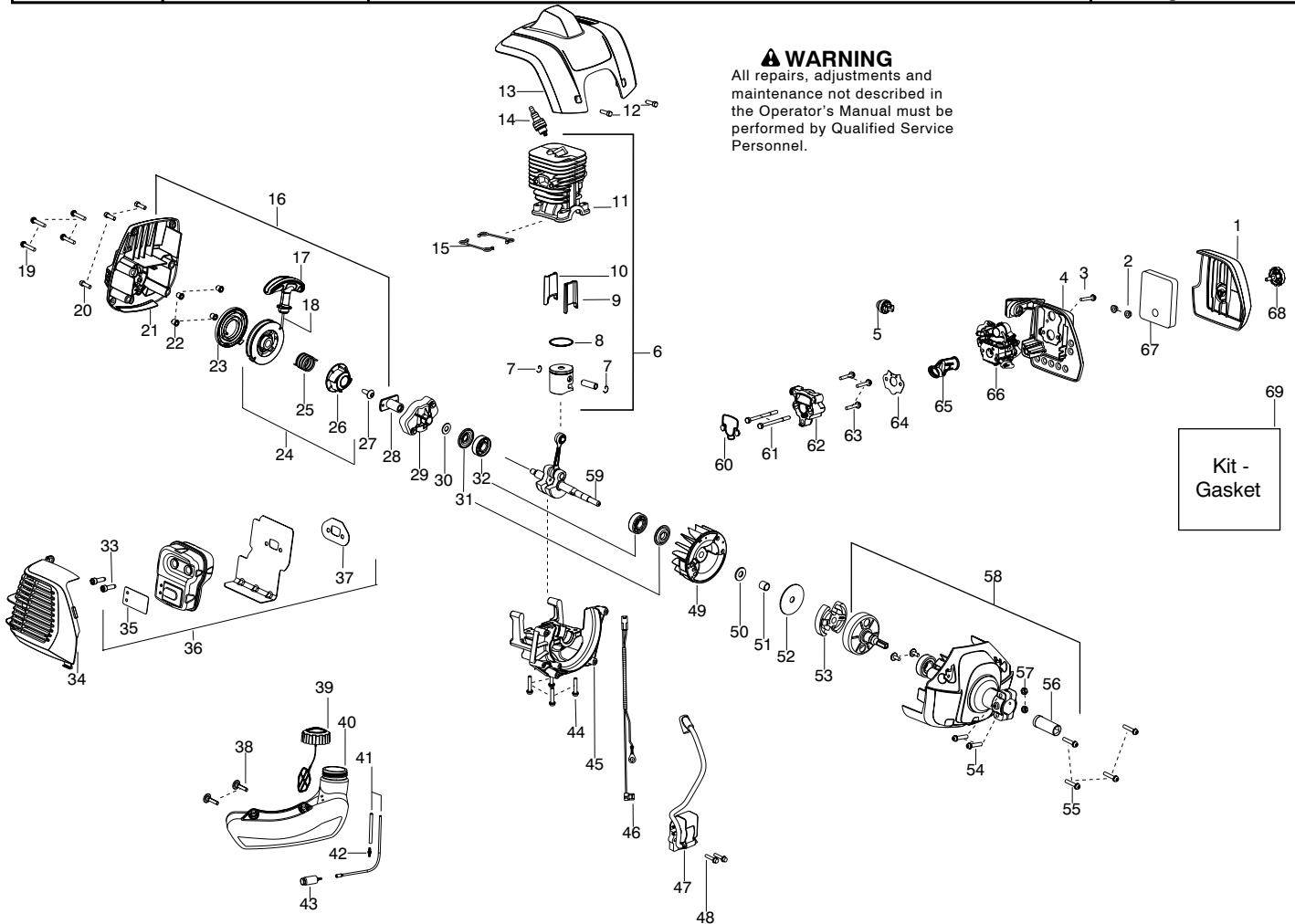
★ = Refer to the Service Reference Indicated for more information.(Located at the END of the IPL)

|                                    |  |  |                                |
|------------------------------------|--|--|--------------------------------|
| <b>Parts List No.</b><br>545192174 |  | <h1>Poulan PRO<sup>®</sup></h1> PARTS LIST | <b>MODEL</b><br>PP033 (US/CAN) |
| <b>Date</b><br>4/15/09             | <b>Replaces</b><br>545192174 - 4/01/09 |  | <b>Page:</b> 2                 |

**NOTE :** Illustration may differ from actual model due to design changes.

**⚠ WARNING**

All repairs, adjustments and maintenance not described in the Operator's Manual must be performed by Qualified Service Personnel.



| Ref. | Part No.  | Description                                      | Ref. | Part No.  | Description                      | Ref. | Part No.  | Description                            |
|------|-----------|--|------|-----------|----------------------------------|------|-----------|--|
| 1.   | 545177001 | Cover-Airbox                                     | 24.  | 545008049 | Kit-Pulley(Incl 25,26)           | 46.  | 545191601 | Assy-Leadwire                          |
| 2.   | 530016101 | Nut-Carb. Screw                                  | 25.  | 545188301 | Spring-Starter Hub               | 47.  | 545189701 | Module-Ignition                        |
| 3.   | 530016301 | Screw 8-32                                       | 26.  | 545188001 | Hub-Starter                      | 48.  | 530016357 | Screw 8-32                             |
| 4.   | 545176901 | Base-Airbox                                      | 27.  | 545112801 | Screw M6                         | 49.  | 545120401 | Assy-Flywheel                          |
| 5.   | 530047721 | Purge Bulb                                       | 28.  | 545188201 | Coupling-Starter                 | 50.  | 530016463 | Washer                                 |
| 6.   | 545008046 | Kit-Piston/Cyl.<br>(Incl. 7,8,9,10,11)           | 29.  | 545188701 | Assy-Starter Cup                 | 51.  | 530057852 | Spacer-Flywheel                        |
| 7.   | 545194801 | Retainer-Piston pin                              | 30.  | 530015828 | Washer-Flat                      | 52.  | 530094189 | Washer-Clutch                          |
| 8.   | 545194601 | Ring-Piston                                      | 31.  | 545008044 | Seal-Crankshaft (kit)            | 53.  | 545008038 | Kit-Clutch Assy.                       |
| 9.   | 545194901 | Insert-Front Transfer Port                       | 32.  | 545013401 | Bearing-Crankshaft               | 54.  | 530015774 | Screw 10-24 x 1"                       |
| 10.  | 545195001 | Insert-Rear Transfer Port                        | 33.  | 530058982 | Bolt-Muffler                     | 55.  | 530015897 | Screw M5 x 25mm                        |
| 11.  | 545181801 | Cylinder-Machined                                | 34.  | 545156301 | Guard-Muffler                    | 56.  | 545186401 | Guide-Clutch Drum                      |
| 12.  | 530016449 | Screw M4 x1.75 x 16mm                            | 35.  | 545008070 | Kit-Spark Arrestor               | 57.  | 530015768 | Locknut 10-24                          |
| 13.  | 545156401 | Cover-Top  | 36.  | 545180701 | Assy-Muffler<br>(Incl. 33,35,37) | 58.  | 545190801 | Assy-Fan Hsg (Incl.54,56,57)           |
| 14.  | 952030249 | Spark Plug (RCJ- 6Y)                             | 37.  | 545008044 | Gasket-Muffler (kit)             | 59.  | 545008047 | Kit-Crankshaft                         |
| 15.  | 545008044 | Seal-Cylinder(Kit)                               | 38.  | 530016445 | Screw-Tank Retainer              | 60.  | 545008044 | Seal-Cyl./Adapter (kit)                |
| 16.  | 545190701 | Assy-Shroud Rear<br>(Incl. 17,18,21,22,23,24,27) | 39.  | 545215901 | Assy-Fuel Cap w/ret.             | 61.  | 530016418 | Bolt M5 x .80                          |
| 17.  | 545208401 | Handle-Starter                                   | 40.  | 545182101 | Assy-Tank<br>(Incl. 39,41,42,43) | 62.  | 545194501 | Adaptor-Carburetor                     |
| 18.  | 545029901 | Kit-Rope   | 41.  | 530069599 | Kit-Fuel line                    | 63.  | 530016441 | Screw .20 x 32                         |
| 19.  | 530015897 | Screw M4 x .8 x 25mm                             | 42.  | 530023877 | Kit-Fuel line                    | 64.  | 545008044 | Gasket-Carb./Adapter(kit)              |
| 20.  | 530016449 | Screw M4 x 1.75 x 16mm                           | 43.  | 530095646 | Fitting-Fuel Line                | 65.  | 545190501 | Boot-Carb.                             |
| 21.  | 545190601 | Housing-Starter w/eyelet                         | 44.  | 530095646 | Assy-Fuel Pickup                 | 66.  | 545008042 | Kit-Carburetor                         |
| 22.  | 545185301 | Spacer   | 45.  | 530015897 | Screw-m5x25mm                    | 67.  | 545195901 | Filter-Air                             |
| 23.  | 545008013 | Kit-Starter Spring                               |      | 545181901 | Crankcase                        | 68.  | 545188801 | Assy-Airbox Knob                       |
|      |           |  |      |           |                                  | 69.  | 545008044 | Kit - Gasket<br>(Incl. 15,31,37,60,64) |

✓ = New Part Number For This IPL

★ = Refer to the Service Reference Indicated for more information.(Located at the END of the IPL)

## Free Manuals Download Website

<http://myh66.com>

<http://usermanuals.us>

<http://www.somanuals.com>

<http://www.4manuals.cc>

<http://www.manual-lib.com>

<http://www.404manual.com>

<http://www.luxmanual.com>

<http://aubethermostatmanual.com>

Golf course search by state

<http://golfingnear.com>

Email search by domain

<http://emailbydomain.com>

Auto manuals search

<http://auto.somanuals.com>

TV manuals search

<http://tv.somanuals.com>