



5" SEMI-AUTO PACKAGED CUTTING HEAD

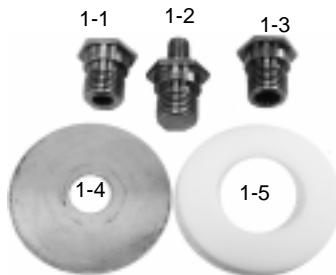
ITEM NUMBER: 746451

Safety Instructions

- 1.) *Warning! Read this owners manual as well as the owners manual supplied with your grass trimmer. Be sure to follow all warnings and safety instructions. Failure to do so can result in serious injury to the operator and/or bystanders.
- 2.) Wear eye protection that complies with ANSI Z87-1 std.
- 3.) Do not operate power equipment when you are tired, ill, or under the influence of alcohol, drugs, or medication.
- 4.) Always wear heavy long pants, boots, and gloves. Do not wear loose clothing, short pants, sandals, or go bare foot. Secure hair so it is above shoulder level.
- 5.) Inspect unit before each use. Replace parts that may be cracked, chipped, or damaged in any way. Make sure the cutting head is properly installed and securely fastened. Be sure the cutting attachment shield is properly attached in the position recommended by the manufacturer.
- 6.) Clear the work area before each use. Remove all objects such as rocks, broken glass, nails, wire, or string which can be thrown or become entangled in the cutting head. Clear the area of children, bystanders, and pets in a 50 foot (15m) radius. It is recommended that bystanders wear eye protection. If you are approached, stop the engine and cutting attachment immediately.

Installation

The following instructions are based on mounting the head to Tanaka units. Other brands of product may be similar, however be sure to check the unit's owner's manual for proper procedures. The package comes standard with the following mounting components:



Ref.#	Part No.	Description
1-1	365-3383E-200	Adapter Nut (8mm x 1.25 LHF)
1-2	356-33830-200	Adapter Bolt (8mm x 1.25 LHM)
1-3	356-3383B-200	Adapter Nut (10mm x 1.25 LHF)
1-4	29729	Mounting Washer
1-5	17W20004	Mounting Spacer

The head comes standard with a 10mm x 1.25 LHF adapter (Ref. 1-3 in chart above). To change the adapter, loosen /remove (with a 19mm wrench or socket) by turning counter-clockwise (Ref. 2).



Ref. 2

Installation (continued)

Many gear cases utilize a separate piece or cover which includes a mounting shoulder which is used to hold and center cutting blades as shown in Ref. 3. On Tanaka units, for the 5" Semi-Auto head to be held flush and tight, **BOTH** the mounting spacer (first) and washer (second) must be used as shown in Ref. 4.

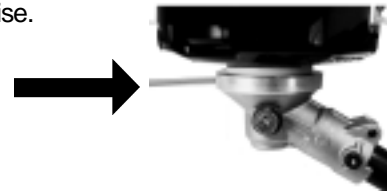


Ref. 3



Ref. 4

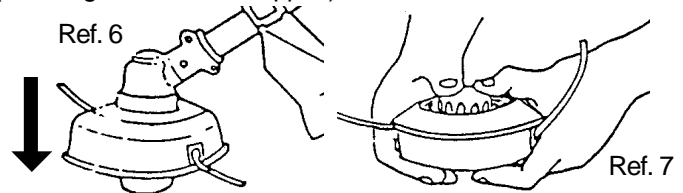
Once the spacers and head have been attached, rotate the cover to the front of the gear case until you can insert a long / small diameter metal object (such as a small screwdriver or hex wrench included with all Tanaka units) into the locking hole as shown in Ref. 5. Tighten the cutting head by turning it counter-clockwise.



Ref. 5

Extending Line

When nylon line becomes shorter, reduce engine speed and tap the cutting head on the ground as shown in Ref. 6. To extend nylon line by hand, push in on the bottom of the head (after engine has been stopped) and rotate as shown in Ref. 7.

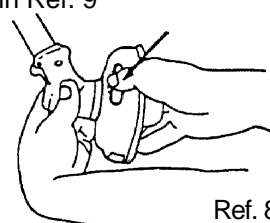


Ref. 6

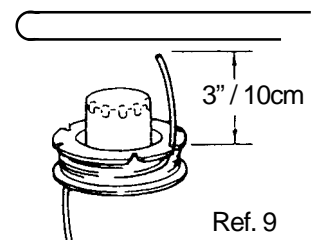
Ref. 7

Disassembly / Nylon Line Installation

Press in on the two locking slots of the inner housing as shown in Ref. 8. Pull inner housing from the outer housing and remove spring and spool from the outer housing. Fold the line in half (the head will hold up to 25' of .095" dia. line.) so that one end is approx. 3 inches longer than the other. Insert the folded end in to the slot of the center partition of the spool and wind the nylon line in the direction marked "Wind Cord". Leave approx 3 inches of line on each end and lock in to the appropriate slots on the spool as shown in Ref. 9.



Ref. 8



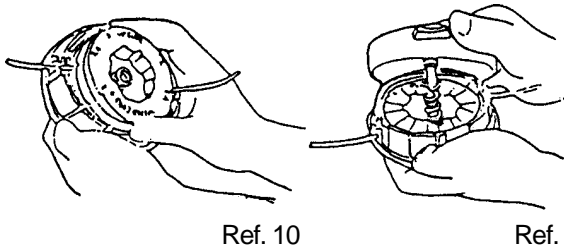
Ref. 9



5" SEMI-AUTOMATIC CUTTING HEAD ITEM NUMBER: 746451

Cutting Head Assembly

Place the spool into the inner housing. Pass both line ends through the eyelets and remove the lines from the locking slots of spool as shown in Ref. 10. Place the return spring into the spool, then place the outer housing on the inner housing and assemble firmly by pushing the two locking slots with thumbs as shown in Ref. 11. Adjust nylon line to desired length by pushing in on the tap button and turning the spool.



Troubleshooting

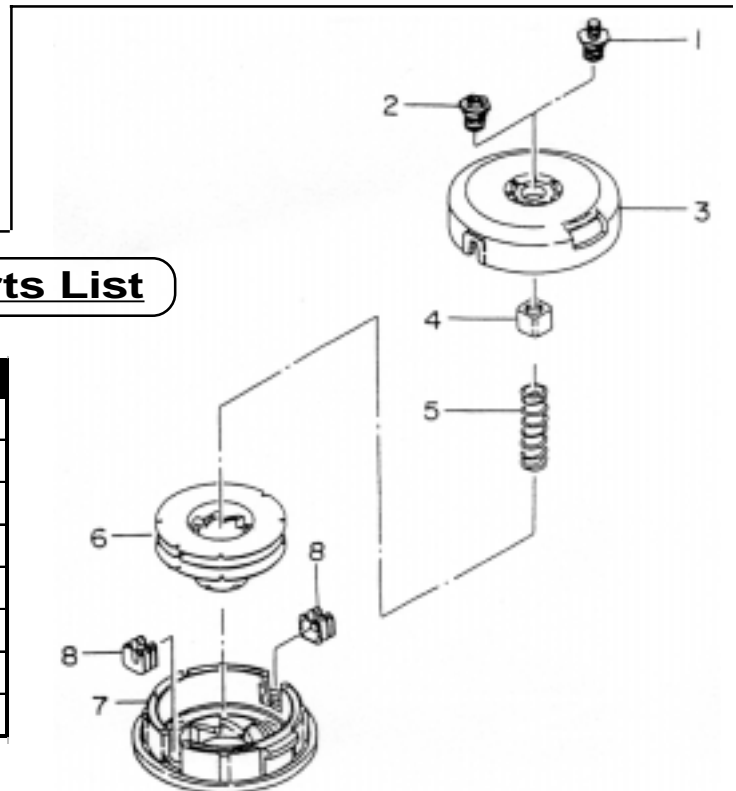
Problem: Nylon line is not feeding.

Possible Causes:

- 1.) Nylon line is almost used up.
- 2.) The lines have been deformed .
- 3.) The lines have become intertwined.

Solutions:

- 1.) Disassemble the cutting head.
- 2.) Remove nylon line from the spool and rewind.
- 3.) Replace the nylon line if the line is almost gone or deformed.
- 4.) Reassemble the cutting head.



Parts List

Ref	Part Number	Part Description	Qty
1	356-33830-200	Adapter, 8mm x 1.25mm LH Male	1
2	356-3383B-200	Adapter, 10mm x 1.25mm LH Female	1
3	786-33830-200	Body, Nylon Cord	1
4	315-33830-200	Nut, Special	1
5	793-33830-200	Spring, Reel	1
6	787-33830-200	Reel, Nylon Cord	1
7	789-33830-200	Cap, Body	1
8	788-33830-200	Eyelet	2

TANAKA OFFERS OTHER HIGH QUALITY CUTTING HEADS

FULLY AUTOMATIC

The Original BRAIN®



Order # 746251
Std. Line Diameter: .095"
Line Capacity: 30ft. / 9.1m

The BRAIN® 2000



Order # 746751
Std. Line Diameter: .095"
Line Capacity: 20 ft. / 6.7m

HEAVY-DUTY COMMERCIAL

Aluminum Fixed Line



Order # 746280
Std. Line Diameter: .130"
Line Capacity: N/A

Aluminum Manual Feed



Order # 746290
Std. Line Diameter: .105"
Line Capacity: 15ft / 4.5m

Manual Feed



Order # 746551
Std. Line Diameter: .095"
Line Capacity: 25ft / 7.6 m

Free Manuals Download Website

<http://myh66.com>

<http://usermanuals.us>

<http://www.somanuals.com>

<http://www.4manuals.cc>

<http://www.manual-lib.com>

<http://www.404manual.com>

<http://www.luxmanual.com>

<http://aubethermostatmanual.com>

Golf course search by state

<http://golfingnear.com>

Email search by domain

<http://emailbydomain.com>

Auto manuals search

<http://auto.somanuals.com>

TV manuals search

<http://tv.somanuals.com>