

Installation Guide

Wyse® VX0L and VX0LE Thin Clients
512-MB RAM Upgrade Option Kit

Issue: 022108
PN: 883884-06L Rev. A



Copyright Notice

© 2008, Wyse Technology Inc. All rights reserved.

This manual and the software and firmware described in it are copyrighted. You may not reproduce, transmit, transcribe, store in a retrieval system, or translate into any language or computer language, in any form or by any means, electronic, mechanical, magnetic, optical, chemical, manual or otherwise, any part of this publication without express written permission.

End User License Agreement (“License”)

A copy of the Wyse Technology End User License Agreement is included in the software and provided for your reference only. The License at <http://www.wyse.com/license> as of the purchase date is the controlling licensing agreement. By copying, using, or installing the software or the product, you agree to be bound by those terms.

Trademarks

Wyse and Winterm are registered trademarks, and the Wyse logo and Winterm logo are trademarks of Wyse Technology Inc. ICA is a registered trademark and MetaFrame is a trademark of Citrix Systems Inc. Microsoft and Windows are registered trademarks of Microsoft Corporation. All other products are trademarks and/or registered trademarks of their respective companies. Specifications subject to change without notice.

Patents

This product and/or associated software are protected by copyright, international treaties, and various patents, including the following U.S. patents: 6,836,885 and 5,918,039.

Restricted Rights Legend

You acknowledge that the Software is of U.S. origin. You agree to comply with all applicable international and national laws that apply to the Software, including the U.S. Export Administration Regulations, as well as end-user, end-use and country destination restrictions issued by U.S. and other governments. For additional information on exporting the Software, see <http://www.microsoft.com/exporting>.

Ordering Information

For availability, pricing, and ordering information in the United States and Canada, call 1-800-GET-WYSE (1-800-438-9973) or visit us at <http://www.wyse.com>. In all other countries, contact your sales representative.

FCC Statement

This equipment has been tested and found to comply with the limits for either Class A or Class B digital devices (refer to "Thin Client Requirements Compliance"), pursuant to Part 15 of the FCC Rules. These limits are designed to provide reasonable protection against harmful interference in a residential installation. This equipment generates, uses, and can radiate radio frequency energy and, if not installed and used in accordance with the instructions, may cause harmful interference to radio communications. However, there is no guarantee that interference will not occur in a particular installation. If this equipment does cause harmful interference to radio or television reception, which can be determined by turning the equipment off and on, the user is encouraged to try to correct the interference by one or more of the following measures:

- Reorient or relocate the receiving antenna.
- Increase the separation between the equipment and the receiver.
- Connect the equipment into an outlet on a circuit different from that to which the receiver is connected.
- Consult the dealer or an experienced radio/TV technician for help.



Caution

Changes or modifications not covered in this manual must be approved in writing by the manufacturer's Regulatory Engineering department. Changes or modifications made without written approval may void the user's authority to operate the equipment.

Thin Client Requirements Compliance

FCC Compliance

Model VX0 thin clients meet Class B requirements.

IEC/EN Compliance

Model VX0 thin client meet Class B requirements.

Canadian DOC Notices

Refer to the previous section, "Thin Client Requirements Compliance," to find out to which Thin Client model each of the statements below refers.

Class A

This digital apparatus does not exceed the Class A limits for radio noise emissions from digital apparatus set out in the Radio Interference Regulations of the Canadian Department of Communications.

Le présent appareil numérique n'émet pas de bruits radioélectriques dépassant les limites applicables aux appareils numériques de la classe A prescrites dans le Règlement sur le brouillage radioélectrique édicté par le Ministère des Communications du Canada.

Class B

This digital apparatus does not exceed the Class B limits for radio noise emissions from digital apparatus set out in the Radio Interference Regulations of the Canadian Department of Communications.

Le présent appareil numérique n'émet pas de bruits radioélectriques dépassant les limites applicables aux appareils numériques de la classe B prescrites dans le Règlement sur le brouillage radioélectrique édicté par le Ministère des Communications du Canada.

IEC/EN Notice

This product conforms to the requirements of IEC950 and EN60950.

This product conforms to requirements of EN55022 for Class A equipment or EN55022 for Class B equipment (refer to "Thin Client Requirements Compliance").

Cable Notice

The use of shielded I/O cables is required when connecting this equipment to any and all optional peripheral or host devices. Failure to do so may cause interference and violate FCC and international regulations for electromagnetic interference.

Device Power Supply



Caution

Replace power supply with the same or equivalent type as recommended by the manufacturer.

Model VX0, Product VX0L/LE Thin Clients

For use with External Power Supply Model LSE9802A1255, or certified equivalent model supplied by the manufacturer, output rated 12Vdc, 4.0A.

Battery Information

Model VX0, Product VX0L/LE thin clients contain a replaceable battery.



Warning

There is a risk of explosion if the battery is replaced by an incorrect type. Always dispose of used batteries according to the instructions accompanying the battery.



Contents

About This Guide	1
Before You Begin	1
Kit Warranty	1
What's in the Kit	1
Required Tools and Materials	1
Wyse Technical Support	2
Related Online Resources Available at Wyse	2
Installing the Option Kit	2
Verifying the Thin Client's Operation	4

Installation Guide

Wyse® VX0L and VX0LE Thin Clients 512-MB RAM Upgrade Option Kit

About This Guide

This guide describes how to install the 512-MB RAM Upgrade Option Kit in a Wyse VX0L or VX0LE thin client. This guide is intended for users of Wyse VX0L/LE thin clients.

Before You Begin

This section provides information about kit warranty, kit contents, the tools needed, and accessing Technical Support and related online resources.

Kit Warranty

The warranty on this kit assumes the remaining months of warranty of the thin client in which it is installed, or for 90 days, whichever is greater. Installation of this kit will not void the factory warranty, however the user will be responsible for damage due to improper installation.

What's in the Kit

Included in the kit is the 512-MB RAM module (your module may look different).



Required Tools and Materials

You will need a #1 Phillips Screwdriver and a small Flat-Edge Screwdriver to install the kit.

**Warning**

The RAM module may be susceptible to damage by Electro-Static Discharge (ESD). All industry-standard cautions should be followed to avoid ESD.

**Caution**

Follow all precautions listed in the Quick-Start Guide that came with your thin client for disconnecting and reconnecting the thin client.

Wyse Technical Support

To access Wyse technical resources, visit <http://support.wyse.com>. If you still have questions, you can submit your questions using the [Wyse Self-Service Center](#), or call Customer Support at 1-800-800-WYSE (toll free in U.S. and Canada). Hours of operation are from 6:00 am to 5:00 pm PST, Monday through Friday.

To access international support, visit <http://www.wyse.com/global>.

Related Online Resources Available at Wyse

Wyse thin client features can found in the Datasheet for your specific thin client model. Datasheets are available on the Wyse Web site at: <http://www.wyse.com/products>.

Administrator, User, and ReadMe documentation for your thin client model are available at: <http://www.wyse.com/manuals>.

Wyse Thin Computing Software is available on the Wyse Web site at: <http://www.wyse.com/products/software>.

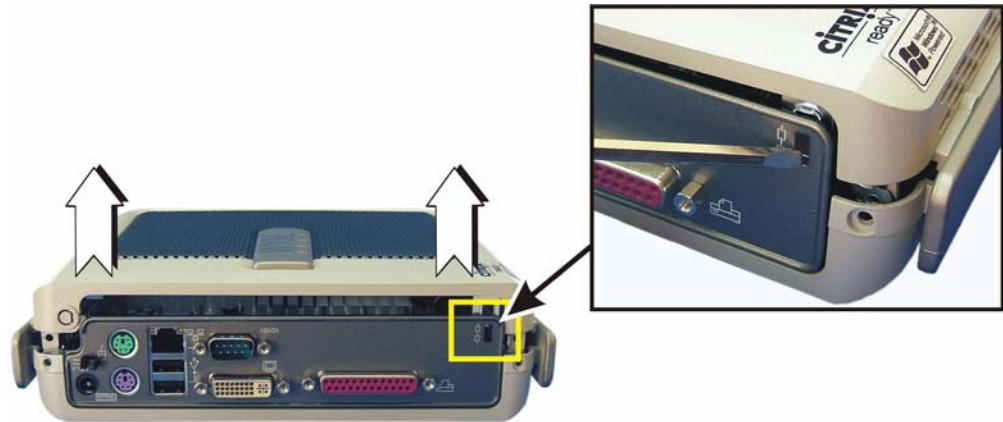
Installing the Option Kit

To install the 512-MB RAM Upgrade Option Kit in the Wyse VX0L/LE thin client:

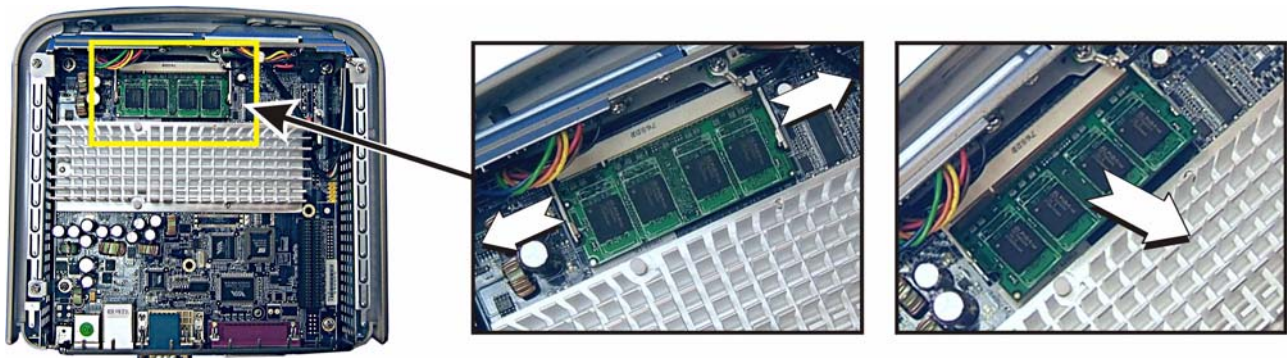
1. Perform a proper shutdown of the thin client by ending your session and clicking the buttons as they appear; then press the power button to turn off the thin client.
2. Unplug the power cord, power adapter, remove all of the cables from the rear of the unit, and detach the vertical foot.
3. Remove the two screws from the rear of the thin client using a #1 Phillips Screwdriver.



- Remove the top cover from the thin client by inserting the tip of a small Flat-Edge Screwdriver just inside the edge of the lock receptacle to make contact with the metal liner that lines the opening. Apply pressure inward and downward on the metal liner while pulling up on the plastic housing until it releases.



- Carefully remove the existing module from the socket, noting where the connector of the module is located. Push the module locking clamps, swinging them outward, from each side of the module to unlock it for removal; remove the module.



- Install the 512-MB RAM module, label facing down, into the location of the original module at the same angle, and then press module's raised edge downward until it snaps in place.

⚠ Warning

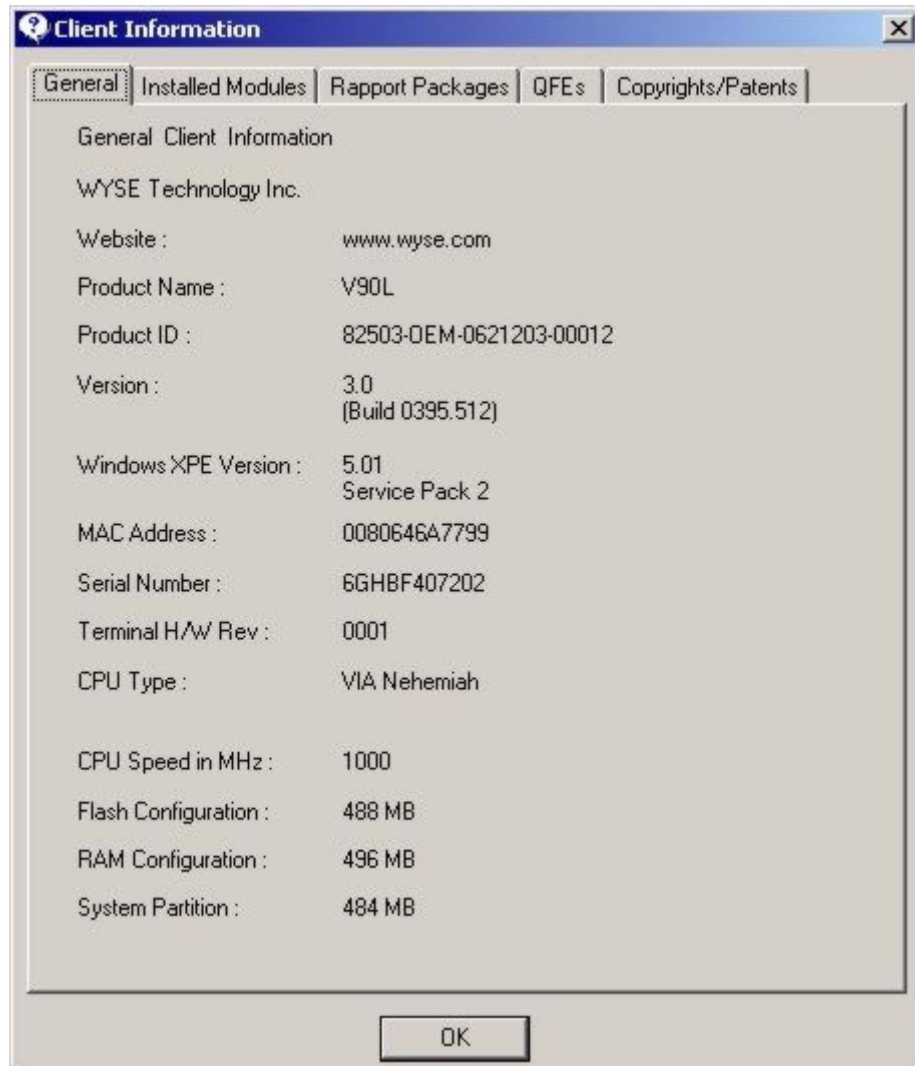
The RAM module may be susceptible to damage by Electro-Static Discharge (ESD). All industry-standard cautions should be followed to avoid ESD.

- Replace the top cover and attach the vertical foot.
- Proceed to "Verifying the Thin Client's Operation."

Verifying the Thin Client's Operation

To verify that the thin client works properly:

1. Reconnect the video display, keyboard, mouse, and power adapter to the thin client before connecting to your electrical outlet; then press the power button on the thin client.
2. From the desktop, click **Start | About** to open the Client Information window.



3. Verify that the **MAC address** and **Serial Number** matches the serial number and MAC address on the thin client.
4. Verify that the **RAM Configuration** is approximately **496 MB**.
5. Click **OK** to close the Client Information window. The thin client is ready for operation and setup by the Administrator.

Installation Guide

Wyse® VX0L and VX0LE Thin Clients
512-MB RAM Upgrade Option Kit
Issue: 022108

Written and published by:
Wyse Technology Inc., February 2008

Created using FrameMaker® and Acrobat®

Free Manuals Download Website

<http://myh66.com>

<http://usermanuals.us>

<http://www.somanuals.com>

<http://www.4manuals.cc>

<http://www.manual-lib.com>

<http://www.404manual.com>

<http://www.luxmanual.com>

<http://aubethermostatmanual.com>

Golf course search by state

<http://golfingnear.com>

Email search by domain

<http://emailbydomain.com>

Auto manuals search

<http://auto.somanuals.com>

TV manuals search

<http://tv.somanuals.com>