

# Installation Guide

## Wyse® X90L and X90Le Mobile Thin Clients Flash and Memory Upgrade Kit

Issue: 072310  
PN: 883884-22L Rev. A



**WYSE**  
| | | |

## Copyright Notice

© 2010, Wyse Technology Inc. All rights reserved.

This manual and the software and firmware described in it are copyrighted. You may not reproduce, transmit, transcribe, store in a retrieval system, or translate into any language or computer language, in any form or by any means, electronic, mechanical, magnetic, optical, chemical, manual or otherwise, any part of this publication without express written permission.

## End User License Agreement (“License”)

A copy of the Wyse Technology End User License Agreement is included in the software and provided for your reference only. The License at <http://www.wyse.com/license> as of the purchase date is the controlling licensing agreement. By copying, using, or installing the software or the product, you agree to be bound by those terms.

## Trademarks

The Wyse logo and Wyse are trademarks of Wyse Technology Inc. Other product names mentioned herein are for identification purposes only and may be trademarks and/or registered trademarks of their respective companies. Specifications subject to change without notice.

## Patents

This product and/or associated software are protected by copyright, international treaties, and various patents, including the following U.S. patents: 6,836,885 and 5,918,039.

## Restricted Rights Legend

You acknowledge that the Software is of U.S. origin. You agree to comply with all applicable international and national laws that apply to the Software, including the U.S. Export Administration Regulations, as well as end-user, end-use and country destination restrictions issued by U.S. and other governments. For additional information on exporting the Software, see <http://www.microsoft.com/exporting>.

## Ordering Information

For availability, pricing, and ordering information in the United States and Canada, call 1-800-GET-WYSE (1-800-438-9973) or visit us at <http://www.wyse.com>. In all other countries, contact your sales representative.

## FCC Statement

This equipment has been tested and found to comply with the limits for either Class A or Class B digital devices, pursuant to Part 15 of the FCC Rules. These limits are designed to provide reasonable protection against harmful interference in a residential installation. This equipment generates, uses, and can radiate radio frequency energy and, if not installed and used in accordance with the instructions, may cause harmful interference to radio communications. However, there is no guarantee that interference will not occur in a particular installation. If this equipment does cause harmful interference to radio or television reception, which can be determined by turning the equipment off and on, the user is encouraged to try to correct the interference by one or more of the following measures:

- Reorient or relocate the receiving antenna.
- Increase the separation between the equipment and the receiver.
- Connect the equipment into an outlet on a circuit different from that to which the receiver is connected.
- Consult the dealer or an experienced radio/TV technician for help.

Shielded interconnect cables and shielded AC power cable must be employed with this equipment to insure compliance with the pertinent RF emission limits governing this device. Changes or modifications not expressly approved by the system's manufacturer could void the user's authority to operate the equipment.



### Caution

Modifications made to the product, unless expressly approved by Wyse Technology, could void the user's authority to operate the equipment.

## Regulatory Compliance for Wyse Products

### Basic EMC and Safety Requirements

Wyse appliances are compliant with the regulatory requirements in the regions listed below.

U.S.A. - FCC Part 15 (class B)

Canada - CAN/CSA-C22 No. 60950

Europe - EN 55022 (class B), EN 61000-3-2 (class A), EN 61000-3-3, EN 90650-1:2000+ALL

## Canadian DOC Notices

### Class A

This digital apparatus does not exceed the Class A limits for radio noise emissions from digital apparatus set out in the Radio Interference Regulations of the Canadian Department of Communications.

Le présent appareil numérique n'émet pas de bruits radioélectriques dépassant les limites applicables aux appareils numériques de la classe A prescrites dans le Règlement sur le brouillage radioélectrique édicté par le Ministère des Communications du Canada.

### Class B

This digital apparatus does not exceed the Class B limits for radio noise emissions from digital apparatus set out in the Radio Interference Regulations of the Canadian Department of Communications.

Le présent appareil numérique n'émet pas de bruits radioélectriques dépassant les limites applicables aux appareils numériques de la classe B prescrites dans le Règlement sur le brouillage radioélectrique édicté par le Ministère des Communications du Canada.

## Device Power Supply

Use only the external power supply that comes with your mobile thin client. For power and voltage ratings, see the serial number label or regulatory label on your device. For power adapter replacement, contact your Wyse Service Representative. For proper replacement compare the labels on both mobile thin client and power adapter to ensure that their voltages match.



### Warning

Use of any other power adapter may damage your mobile thin client or the power adapter. The damage caused by an improper power adapter is not covered by warranty.

## Battery Information

Model Xn0L mobile thin clients contain an internal button cell battery replaceable by Wyse or one of our Authorized Service Centers. For service, visit <http://www.wyse.com/serviceandsupport/service/service.asp>.



### Warning

There is a risk of explosion if the battery is replaced by an incorrect type. Always dispose of used batteries according to the instructions accompanying the battery.

Perchlorate Materials - Special Handling May Be Required under California Code of Regulations, title 22. (Only required within the U.S.A.)

Model Xn0L mobile thin clients contain a user-replaceable battery pack. The battery is designed to work with your Wyse mobile thin client. Do not use a battery from other mobile thin clients or laptop computers with your mobile thin client. Replace the battery only with a compatible battery purchased from a Wyse Authorized Service Center. For service, visit <http://www.wyse.com/serviceandsupport/service/spares.asp>.



### Caution

Misuse of the battery pack may increase the risk of fire or chemical burn. Do not puncture, incinerate, disassemble, or expose the battery to temperatures above 65°C (149°F). Keep the battery away from children. Handle damaged or leaking batteries with extreme care. Damaged batteries may leak and cause personal injury or equipment damage.


This page intentionally blank.



# Contents

About this Guide	1
Finding the Information You Need in this Guide	1
Wyse Technical Support	1
Wyse Online Community	1
Related Online Resources Available at Wyse	1
Getting Started	2
Kit Warranty	2
Kit Contents	2
Required Tools and Materials	3
Installing the Upgrade Kit	4
Verifying the Mobile Thin Client's Operation	7
Attaching the Upgrade Serial Label	10
<b>Figures</b>	<b>11</b>

This page intentionally blank.



# Wyse® X90L and X90Le Mobile Thin Clients Flash and Memory (RAM) Upgrade Kit Installation Guide

---

## About this Guide

This guide describes how to install the 1-GB, 2-GB, or 4-GB flash and two (2) 1-GB RAM Upgrade Kit in a Wyse X class mobile thin client. The information in this document is intended for users of the following mobile thin client products:

- X90L
- X90Le

## Finding the Information You Need in this Guide

You can use either the Search window or Find toolbar to locate a word, series of words, or partial word in an active PDF document. For detailed information on using these features, refer to the Help in your PDF reader.

---

## Wyse Technical Support

To access Wyse technical resources, visit <http://www.wyse.com/support>. If you still have questions, you can submit your questions using the [Wyse Self-Service Center](#) (on the Wyse.com home page, go to **Support | Knowledge Base | Home** tab) or call Customer Support at 1-800-800-WYSE (toll free in U.S. and Canada). Hours of operation are from 6:00 A.M. to 5:00 P.M. Pacific Time, Monday through Friday.

To access international support, visit <http://www.wyse.com/global>.

## Wyse Online Community

Wyse maintains an online community where users of our products can seek and exchange information on user forums. Visit the Wyse Online Community forums at: <http://community.wyse.com/forums>.

## Related Online Resources Available at Wyse

Wyse mobile thin client features can be found in the datasheet for your specific model. Datasheets are available on the Wyse Web site. Go to <http://www.wyse.com/products>, click the *Wyse Mobile Thin Clients* link, click the link for your mobile thin client, and then click the *Download Datasheet* link.

Administrator and User documentation for your mobile thin client model are available at: <http://www.wyse.com/manuals>.

If you need to upgrade your operating system, contact Wyse Customer Support at: <http://www.wyse.com/support>.

Wyse Thin Computing Software is available on the Wyse Web site at: <http://www.wyse.com/products/software>.

## Getting Started

This section provides information about your flash and RAM kit warranty, kit contents, and required tools.

### Kit Warranty

The warranty on this kit assumes the remaining months of warranty of the mobile thin client in which it is installed, or for 90 days, whichever is greater. Installation of this kit will not void the factory warranty, however the user will be responsible for damage due to improper installation.

### Kit Contents

Your kit may include a 1GB, 2-GB, or 4-GB flash module (with Microsoft® Windows® XP Embedded pre-loaded) and one (1) 1-GB RAM module. See Figures 1 and 2 for your mobile thin client module type. See Figure 3 for the upgrade serial label that you will attach to your mobile thin client.

**Figure 1 Flash module types**



**Figure 2 RAM module types**



**Figure 3 Upgrade Serial Label**





## Required Tools and Materials

You will need the following recommended tools to install the kit:

- Small Phillips screwdriver
- Plastic alignment tools or equivalent

**Figure 4 Recommended tools**



### **Warning**

Flash and RAM modules may be susceptible to damage by Electro-Static Discharge (ESD). All industry-standard cautions should be followed to avoid ESD. Before you remove or install a modules, touch any metal part of the chassis and keep that contact with the chassis during the installation process.

---

## Installing the Upgrade Kit

To install the 1-GB, 2-GB, or 4-GB flash and one (1) 1-GB RAM Upgrade Kit in an X90L or X90Le mobile thin client:

---

 **Caution**

Follow all precautions listed in the Quick-Start Guide that came with your mobile thin client for disconnecting and reconnecting the mobile thin client.

1. Perform a proper shutdown of the mobile thin client by closing all files and ending your session, and then press the power button to turn off the mobile thin client.
2. Unplug the power cord and power adapter, and remove any other cables from the mobile thin client prior to disassembly.
3. Turn the mobile thin client to the back side, and then using your finger nails or the plastic alignment tool, unsnap the switch covers as indicated in Figure 5.

**Figure 5 Unsnapping the switch covers**



4. Open the lid of the mobile thin client. Using the plastic alignment tool or your finger nails, carefully pry off the switch cover starting at the corners as indicated in Figure 6.

**Figure 6 Prying off the switch cover**



- Using the plastic alignment tool carefully lift up the keyboard (start lifting at the arrow shown in Figure 7), and then lay keyboard facedown to expose the flash and memory modules.

---

**⚠ Caution**

The keyboard is very susceptible to bending so use caution when lifting.

**Figure 7 Lifting up keyboard**



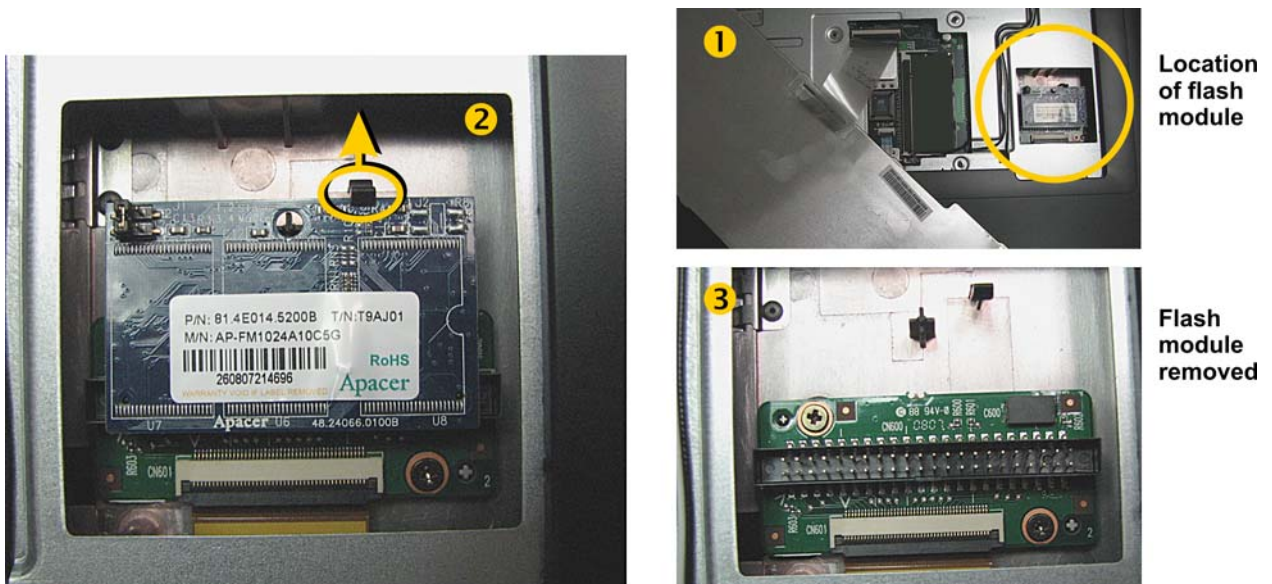
- Remove the existing flash module. Locate the flash module and push its retaining clip out of the way in the direction of the arrow shown in Figure 8. Carefully lift flash module out of the socket.

---

**⚠ Warning**

Flash and RAM modules may be susceptible to damage by Electro-Static Discharge (ESD). All industry-standard cautions should be followed to avoid ESD. Before you remove or install a modules, touch any metal part of the chassis and keep that contact with the chassis during the installation process.

**Figure 8 Removing the flash module**

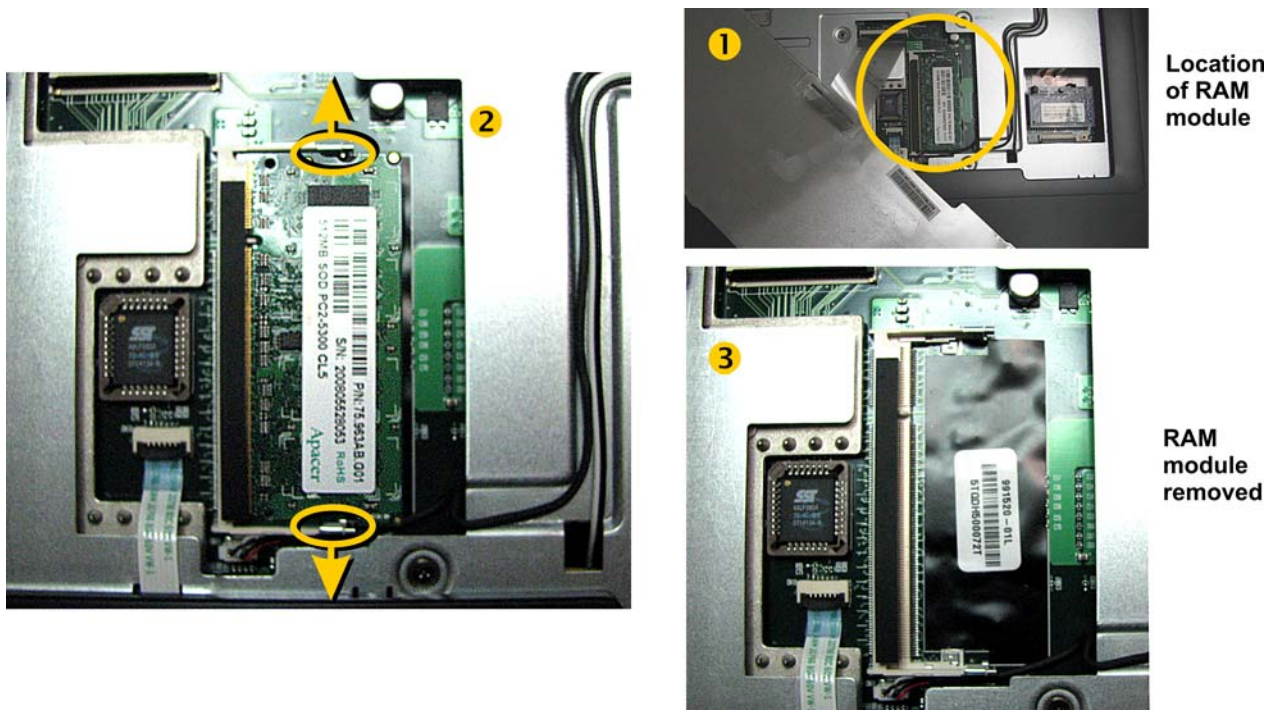


7. Install the new flash module in the reverse order of removing the old module.
8. To remove the existing RAM module, use your fingers to unlock the two locking clamps at either side of the module by pushing the clamps in the direction of the arrows shown in Figure 9. The module should pop up from its socket. Lift out the RAM module.

**✓ Note**

Early 1-GB configurations had two (2) 512-MB DIMMs installed. Your mobile thin client may or may not have a RAM module installed in this location; if it does, then replace with one (1) 1-GB RAM module.

**Figure 9 Removing the RAM module**



9. Insert the new RAM module into the connector of the original module, and then press down on the module so that the two locks will snap in place, securing the module.
10. Replace the cover and keyboard in the reverse order as shown in Figures 5 through 7.
11. Proceed to “Verifying the Mobile Thin Client’s Operation.”

---

## Verifying the Mobile Thin Client's Operation

To verify that the mobile thin client works properly:

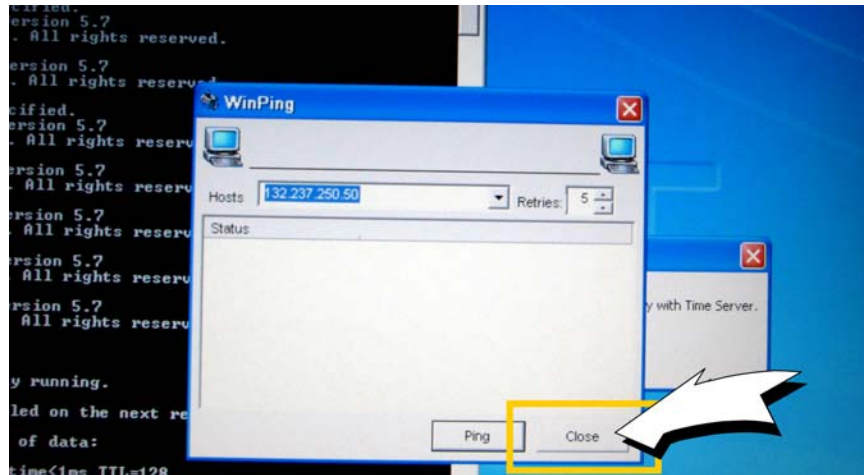
1. Reconnect the power cord and power adapter, and then press the power button on the mobile thin client to apply power.
2. After the mobile thin client restarts, close three windows that have opened on the screen by following these instructions:
  - a. Click **Close** to close the WinPing window, see Figure 10.



### Caution

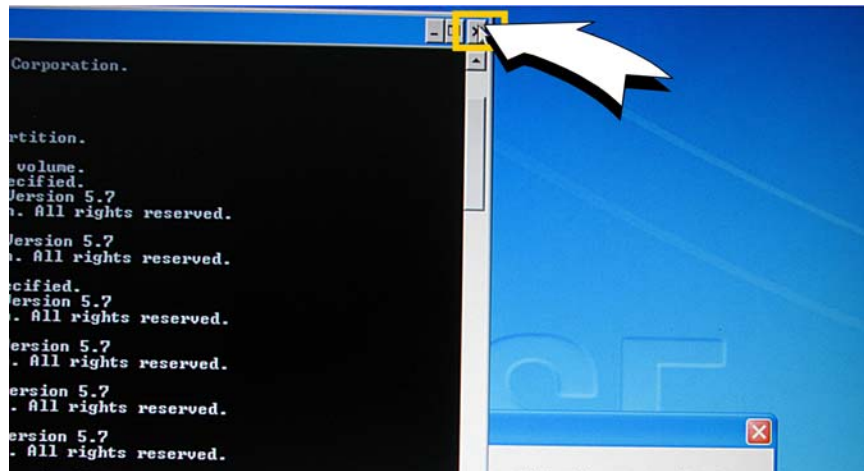
DO NOT click *Ping* or this test will fail.

**Figure 10** Closing the WinPing window



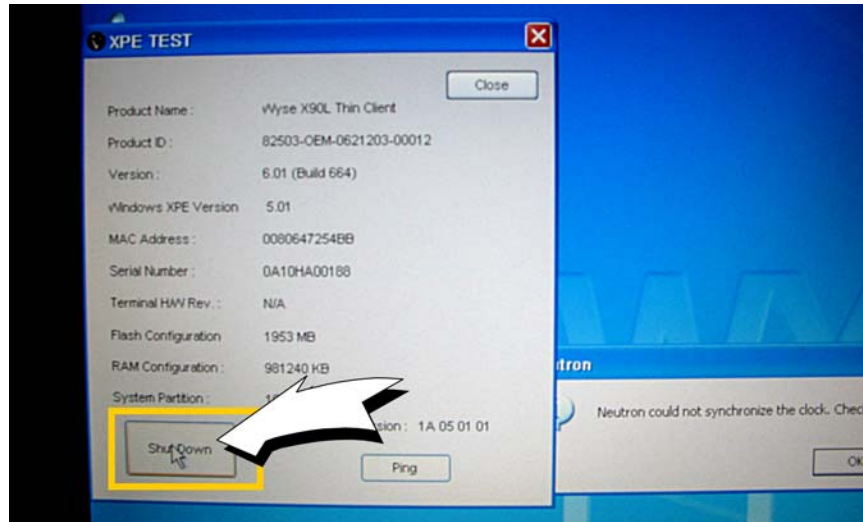
- b. Click on the **X** in the upper right corner of the DOS window, see Figure 11.

**Figure 11** Closing the DOS window



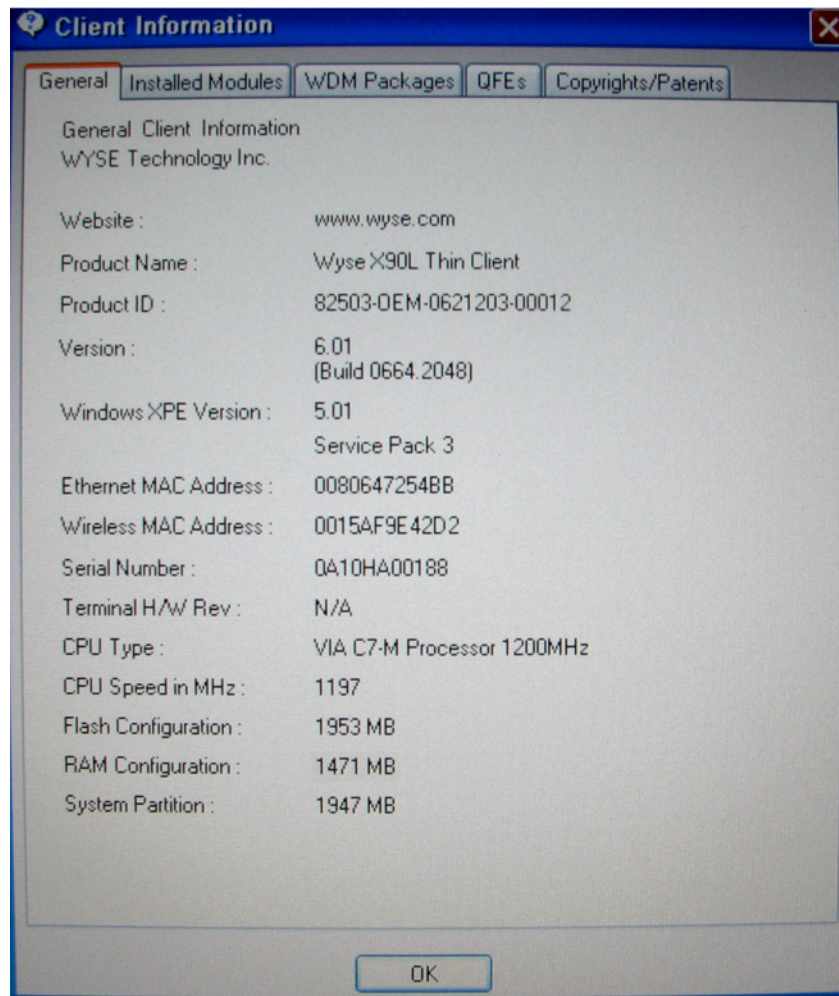
- c. Click **Shutdown** in the XPE TEST window to shutdown the mobile thin client, see Figure 12.

**Figure 12 Shutting down from the XPE TEST window**



3. Press the power button on the mobile thin client for it to restart.
4. From the desktop, click **Start | About** to open the Client Information window, see Figure 13.

Figure 13 Client Information



5. Verify that the **MAC address** and **Serial Number** matches the serial number and MAC address on the mobile thin client.
6. Verify that the **RAM Configuration** is approximately **1471 MB** for early mobile thin clients and **1984 MB** for current mobile thin clients.
7. Verify that the **Flash Configuration** is less than **1024 MB** for a 1-GB flash upgrade, less than **2048 MB** for a 2-GB flash upgrade, and less than **4096 MB** for the 4-GB upgrade.
8. Click **OK** to close the Client Information window.
9. Proceed to "Attaching the Upgrade Serial Label."

---

## Attaching the Upgrade Serial Label

The Wyse conversion kit is supplied with a serial label that must be attached to each mobile thin client.

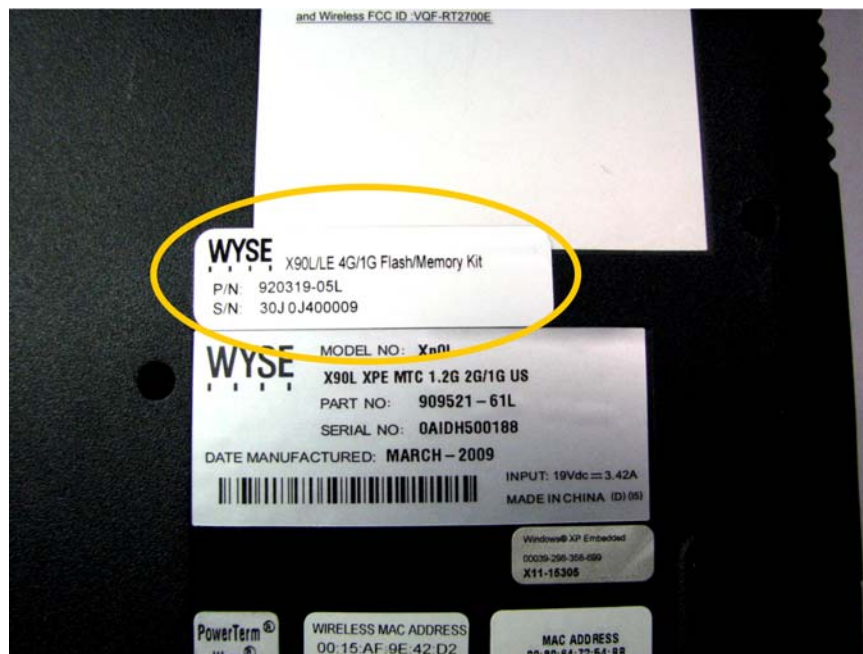
1. Attach the label as shown in Figure 14. Sufficient labels must be purchased for mobile thin clients to be upgraded.



### Caution

Failure to install the label may cause the mobile thin client to receive incorrect replacement parts if sent in for service.

**Figure 14 Attaching the Upgrade Serial Label**



2. The mobile thin client is ready for operation and setup by the Administrator.



# Figures

- 1 Flash module types 2
- 2 RAM module types 2
- 3 Upgrade Serial Label 2
- 4 Recommended tools 3
- 5 Unsnapping the switch covers 4
- 6 Prying off the switch cover 4
- 7 Lifting up keyboard 5
- 8 Removing the flash module 5
- 9 Removing the RAM module 6
- 10 Closing the WinPing window 7
- 11 Closing the DOS window 7
- 12 Shutting down from the XPE TEST window 8
- 13 Client Information 9
- 14 Attaching the Upgrade Serial Label 10

## **Installation Guide**

**Wyse® X90L and X90Le Mobile Thin Clients  
Flash and Memory Upgrade Kit  
Issue: 072310**

Written and published by:  
Wyse Technology Inc., July, 2010

Created using FrameMaker® and Acrobat®

## Free Manuals Download Website

<http://myh66.com>

<http://usermanuals.us>

<http://www.somanuals.com>

<http://www.4manuals.cc>

<http://www.manual-lib.com>

<http://www.404manual.com>

<http://www.luxmanual.com>

<http://aubethermostatmanual.com>

Golf course search by state

<http://golfingnear.com>

Email search by domain

<http://emailbydomain.com>

Auto manuals search

<http://auto.somanuals.com>

TV manuals search

<http://tv.somanuals.com>