

Administrators Guide

Wyse® Enhanced Ubuntu™ Linux

Products: T50

Issue: 060413

PN: 883840-51 Rev. D



Copyright Notices

© 2013, Wyse Technology LLC. All rights reserved.

This manual and the software and firmware described in it are copyrighted. You may not reproduce, transmit, transcribe, store in a retrieval system, or translate into any language or computer language, in any form or by any means, electronic, mechanical, magnetic, optical, chemical, manual or otherwise, any part of this publication without express written permission.

End User License Agreement (“License”)

A copy of the Wyse Technology End User License Agreement is included in the software and provided for your reference only. The License at <http://www.wyse.com/license> as of the purchase date is the controlling licensing agreement. By copying, using, or installing the software or the product, you agree to be bound by those terms.

Trademarks

The Wyse and PocketCloud logos and Wyse and PocketCloud are trademarks of Wyse Technology LLC. Other product names mentioned herein are for identification purposes only and may be trademarks and/or registered trademarks of their respective companies. Specifications subject to change without notice.

Patents

This product and/or associated software are protected by copyright, international treaties, and various patents, including the following U.S. patents: 6,836,885 and 5,918,039.

Restricted Rights Legend

You acknowledge that the Software is of U.S. origin. You agree to comply with all applicable international and national laws that apply to the Software, including the U.S. Export Administration Regulations, as well as end-user, end-use and country destination restrictions issued by U.S. and other governments. For additional information on exporting the Software, see <http://www.microsoft.com/exporting>.

Ordering Information

For availability, pricing, and ordering information in the United States and Canada, call 1-800-GET-WYSE (1-800-438-9973) or visit us at **wyse.com**. In all other countries, contact your sales representative.

FCC Statement

This equipment has been tested and found to comply with the limits for either Class A or Class B digital devices, pursuant to Part 15 of the FCC Rules. These limits are designed to provide reasonable protection against harmful interference in a residential installation. This equipment generates, uses, and can radiate radio frequency energy and, if not installed and used in accordance with the instructions, may cause harmful interference to radio communications. However, there is no guarantee that interference will not occur in a particular installation. If this equipment does cause harmful interference to radio or television reception, which can be determined by turning the equipment off and on, the user is encouraged to try to correct the interference by one or more of the following measures:

- Reorient or relocate the receiving antenna.
- Increase the separation between the equipment and the receiver.
- Connect the equipment into an outlet on a circuit different from that to which the receiver is connected.
- Consult the dealer or an experienced radio/TV technician for help.

Shielded interconnect cables and shielded AC power cable must be employed with this equipment to insure compliance with the pertinent RF emission limits governing this device. Changes or modifications not expressly approved by the system's manufacturer could void the user's authority to operate the equipment.

CAUTION: Modifications made to the product, unless expressly approved by Wyse Technology, could void the user's authority to operate the equipment.

Regulatory Compliance for Thin Clients

Basic EMC and Safety Requirements

Wyse appliances are compliant with the regulatory requirements in the regions listed below.

U.S.A.—FCC Part 15 (class B), cUL 60950

Canada—IC ICES-003, CAN/CSA-C22 No. 60950

Europe—EN 55022 (class B); EN 55024

Canadian DOC Notices

Class A - This digital apparatus does not exceed the Class A limits for radio noise emissions from digital apparatus set out in the Radio Interference Regulations of the Canadian Department of Communications.

Le présent appareil numérique n'émet pas de bruits radioélectriques dépassant les limites applicables aux appareils numériques de la classe A prescrites dans le Règlement sur le brouillage radioélectrique édicté par le Ministère des Communications du Canada.

Class B - This digital apparatus does not exceed the Class B limits for radio noise emissions from digital apparatus set out in the Radio Interference Regulations of the Canadian Department of Communications.

Le présent appareil numérique n'émet pas de bruits radioélectriques dépassant les limites applicables aux appareils numériques de la classe B prescrites dans le Règlement sur le brouillage radioélectrique édicté par le Ministère des Communications du Canada.

Wireless Usage and Requirements

Radio transmitting type devices (RF module) are present in models with the wireless option. These devices operate in the 2.4 GHz band (i.e. 802.11B/G/N LAN & Bluetooth).

As a general guideline, a separation of 20 cm (8 inches) between the wireless device and the body, for use of a wireless device near the body (this does not include extremities) is typical. This device should be used more than 20 cm (8 inches) from the body when wireless devices are on and transmitting.

Some circumstances require restrictions on wireless devices. Examples of common restrictions include:

- When in environments where you are uncertain of the sanction to use wireless devices, ask the applicable authority for authorization prior to use or turning on the wireless device.
- Every country has different restrictions on the use of wireless devices. Since your system is equipped with a wireless device, when traveling between countries with your system, check with the local Radio Approval authorities prior to any move or trip for any restrictions on the use of a wireless device in the destination country.
- Wireless devices are not user-serviceable. Do not modify them in any way. Modification to a wireless device will void the authorization to use it. Please contact the manufacturer for service.

Device Power Supply

Use only the external power supply that comes with your thin client. For power and voltage ratings, see the serial number label or regulatory label on your device. For power adapter replacement, contact your Wyse Service Representative. For proper replacement compare the labels on both mobile thin client and power adapter to ensure that their voltages match.

WARNING: Use of any other power adapter may damage your mobile thin client or the power adapter. The damage caused by an improper power adapter is not covered by warranty.

Battery Information

Model Tx0 contains an internal button cell battery replaceable by Wyse or one of our Authorized Service Centers. For service, visit <http://www.wyse.com/support/authorized-service-centers>.

WARNING: There is a risk of explosion if the battery is replaced by an incorrect type. Always dispose of used batteries according to the instructions accompanying the battery.

Perchlorate Materials - Special Handling May Be Required under California Code of Regulations, title 22. (Only required within the U.S.A.)

This page intentionally blank.



Contents

1	Introduction	1
	About this Guide	1
	Finding the Information You Need in this Guide	1
	Wyse Technical Support	1
	Related Documentation and Services	1
	Enhancing Your Experience with Wyse Software	2
	Wyse Online Community	2
2	Getting Started: Quickly Learning the Basics	3
	Logging In	3
	Using Your Home Screen	4
	Home Screen Keyboard Shortcuts	6
	Configuring Thin Client Settings and Connections	6
	Connecting to Network and Session Services	7
	Connecting to a Printer	7
	Connecting to a Monitor	7
	Locking, Logging Out, Shutting Down, Restarting, and Suspending	8
	Additional Getting Started Details	8
	Viewing System Information	8
	Using Wyse Terminal	9
	Restoring Default Settings with WLoader Setup	9
	Accessing Thin Client Boot Order Settings	9
	Restoring the Complete Image	9
3	Configuring System Settings	11
	Accessibility	12
	Appearance	12
	Background	13
	Citrix Settings (Global Settings)	14
	Network	14
	Drive Mapping	15
	Adding Drives	15
	Editing and Deleting Drives	15
	Hotkeys	16
	Display	16
	Firewall	17
	Trusted Server Configuration	17
	Date & Time	18
	Device Settings	19
	Terminal Name	19
	Hosts	19
	Ethernet Speed	20
	Diagnostics	20
	Display	21
	Ericom PowerTerm® TEC (Managing Servers Available for Connections)	21
	INI (Source) Settings	22

Import Certificates	23
Adding Certificates from a Remote Server	23
Adding Certificates from a Local Device	24
Keyboard	24
Language Support	25
Mixer	25
Mouse	26
Network Connections	26
Network Proxy	27
Printers	28
Installing a Network Printer	29
Installing a Local Printer	30
RDP Settings	31
RD Broker	31
Window	31
Screensaver	32
TCX Audio	32
TCX USB Virtualizer	33
User Administration	34
VNC Server	34
WDM	35
4 Configuring Connections	37
Citrix	38
Network	38
Connection	39
Window	39
Application	39
Login	39
Auto Reconnect	39
Firewall	40
Custom	41
Application	41
Auto Reconnect	41
Ericom PowerTerm® TEC	42
Network	42
Window	42
Connection	42
Setting	43
Remote Configuration	43
View	43
RDP	44
Network	44
Window	44
Login	44
Connection	45
Experience	45
Auto Reconnect	45
Application	45
Drive Mapping	46
Adding Share Names	46
Editing and Deleting Share Names	46
Device Mapping	47
Adding Devices	47
Deleting Devices	47

SSH	48
Network	48
Connection	48
VMware View Client	49
Network	49
Secure Preferences	49
Connection	49
Desktop	50
Login	50
VNC Viewer	51
Network	51
Connection	51
Window	51
Login	51
Web Browser	52
Network	52
Window	52
Auto Reconnect	52
A Central Configuration: Automating Configurations	53
How INI Files are Employed	53
How to Set Up Automatic Configuration	54
Step 1: Prepare the Root Directory and Folder Structure on the Server	54
Step 2: Direct the Thin Client to the Server	56
Using DHCP	56
Manually Configuring the Server Location	58
Step 3: Reboot the Thin Client	58

This page intentionally blank.



1 Introduction

Wyse® Enhanced Ubuntu™ Linux combines the security, flexibility, and market-leading usability of Ubuntu™ (trademark of Canonical Group Limited) with Wyse's cloud computing optimizations in management and user experience. It is ideal for organizations that want to run server-based, Web-based, or local applications (including legacy applications) without the deployment and security concerns of a non-standard Linux distribution.

About this Guide

This guide is intended for administrators of Wyse thin clients running Wyse Enhanced Ubuntu Linux. It provides information and detailed system configurations to help you design and manage a Wyse Enhanced Ubuntu Linux environment. Depending on your hardware and software configurations, the figures you see may be different than the example figures shown in this guide.

This guide supplements the standard Ubuntu documentation supplied by Canonical Inc. and explains the differences, enhancements, and additional features provided by Wyse with the thin client. It does not attempt to describe the standard features found in Ubuntu.

Ubuntu help can be accessed from the Ubuntu Support Web site at:
<http://www.ubuntu.com/support>.

Finding the Information You Need in this Guide

You can use either the Search window or Find toolbar to locate a word, series of words, or partial word in an active PDF document. For detailed information on using these features, refer to the Help in your PDF reader.

Wyse Technical Support

To access Wyse technical resources, visit <http://www.wyse.com/support>. If you still have questions, you can submit your questions using the Wyse Self-Service Center at <http://support.wyse.com/selfservice.html> or call Customer Support at 1-800-800-WYSE (toll free in U.S. and Canada). Hours of operation are from 6:00 A.M. to 5:00 P.M. Pacific Time, Monday through Friday.

To access international support, visit <http://www.wyse.com/global>.

Related Documentation and Services

Fact Sheets containing the features of hardware products are available on the Wyse Web site. Go to <http://www.wyse.com/products> and use the *Cloud clients* tab to locate and download the Fact Sheet for your hardware product.

Reference Guide: Wyse® Enhanced Ubuntu™ Linux INI Files is intended for administrators of Wyse thin clients running Wyse Enhanced Ubuntu Linux. It provides the detailed information you need to help you understand and use the Wyse Enhanced Ubuntu Linux INI files. It contains information on the different INI files you can use and the rules for constructing the files. It also provides the parameter details you need (with working examples) to get the most out of your INI files. It is available at: <http://www.wyse.com/manuals>.

Wyse Cloud Software is available on the Wyse Web site at: <http://www.wyse.com/products/software>.

Enhancing Your Experience with Wyse Software

Wyse provides several software products that are specifically designed to enhance your thin client experience. Wyse Thin Computing Software is available on the Wyse Web site at: <http://www.wyse.com/products/software>.

Wyse Online Community

Wyse maintains an online community where users of our products can seek and exchange information on user forums. Visit the Wyse Online Community forums at: <http://community.wyse.com/forum>.

2

Getting Started: Quickly Learning the Basics

Use the following information to quickly learn the basics and get started using your thin client:

- "Logging In"
- "Using Your Home Screen"
- "Configuring Thin Client Settings and Connections"
- "Connecting to Network and Session Services"
- "Connecting to a Printer"
- "Connecting to a Monitor"
- "Locking, Logging Out, Shutting Down, Restarting, and Suspending"
- "Additional Getting Started Details"

TIP: While it can be used in environments without central configuration for basic connectivity needs, Wyse Enhanced Ubuntu Linux is designed to be centrally managed and configured using INI files. In general, it is recommended that you use central configuration to enable you to automatically push any desired default configuration to all supported thin clients in your environment (see "Central Configuration: Automating Configurations").

Logging In

TIP: On your initial connection to central configuration it is recommended that you connect using a "wired connection" (plug in the network-connected ethernet cable to your thin client *before* starting the thin client) to obtain the configurations desired by the administrator (connections, system settings, required certificates and so on). This "wired connection" will also provide any wireless configurations provided by the administrator through the INI files.

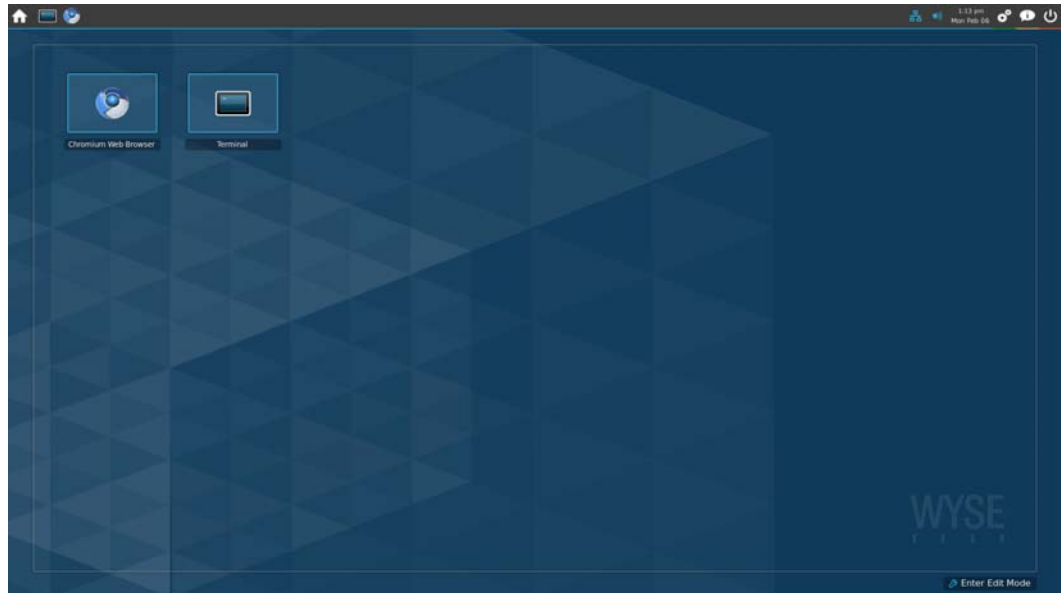
If you must initially connect to central configuration through wireless, use the **Edit Wireless Connection** dialog box (click **System Settings > Network Connections > Wireless tab > Add**) to create a wireless connection where you can enter the SSID and encryption configurations required/set up by the network administrator (see "Network Connections").

After your thin client starts, *Administrators* (high privilege) can log in to your *Home* screen using the default user name **admin** and the default case-sensitive password **admin**. It is highly recommended that you change the default password by using the *User Administration* dialog box in *System Settings* (see "User Administration").

Note that *Thinuser* users (low privilege for locked mode end-user) can use the default user name **thinuser** and the default case-sensitive password **thinuser**; *Guest* users (no privileges Kiosk type setup) can use default user name **guest** and do not need a password.

Using Your Home Screen

The Wyse Enhanced Ubuntu Linux *Home* screen is designed for efficiency and usability.



Use the following guidelines (depending on user privilege, some options may not be available for use):

TIP: Each icon has a pop-up description for easy identification.

Table 1 Menu bar icons





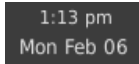



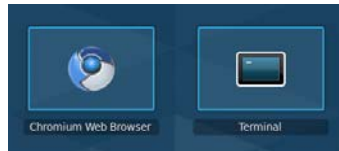
Icon	What It Does
Home 	Displays your <i>Home</i> screen (useful when many windows are open and you want to quickly access your <i>Home</i> screen).
Open Applications and Connections 	Currently open application and connection icons are displayed in the menu bar for convenient access.
Network Manager 	Manages your wired and wireless network connections (see "Connecting to Network and Session Services").
Volume 	Controls the audio volume (use the slider, click <i>Mute All</i> or <i>Unmute</i> as needed; Note that for these settings to take effect, sound must be supported and enabled on the server used for ICA or RDP connections).
Calendar 	Lists the time, day of the week, and date. You can click the calendar to display the calendar window.
System Settings 	Sets up your thin client hardware, look and feel, and system settings (see "Configuring System Settings").

Table 1 Menu bar icons, Continued

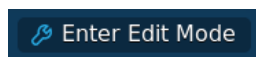
Icon	What It Does
System Information 	Opens the <i>System Information</i> dialog box. Use this dialog box to view system information about the thin client (see "Viewing System Information").
Quit 	Opens the <i>Shutdown</i> dialog box. Use this dialog box to lock, logout, shutdown, restart, or suspend your thin client (see "Locking, Logging Out, Shutting Down, Restarting, and Suspending").

The *Home* screen also contains:

- **Right-click menu** - Right-clicking the menu bar provides options to customize your menu bar and panel. For example, the *Customize Panel* option allows you to move your menu bar to the top, left, bottom, or right of your *Home* screen.
- **Home Screen Application and Connection icons** - Each application and connection icon opens the connections made available by an administrator. For example, a browser, the terminal emulator window (see "Using Wyse Terminal"), or other available connections (see "Configuring Connections").



- **Enter Edit Mode button** - Enters the *Home* screen edit mode allowing you to (depending on user privilege level, some edit mode features may not be available for use; to exit edit mode, click the **Exit Edit Mode** icon):
 - *Edit connections* - Click an icon and configure (see "Configuring Connections")
 - *Delete connections* - Click the delete button of an icon and confirm.
 - *Add new connections* - Click the **Add Item** icon, click the connection you want to add, and then configure (see "Configuring Connections").



Home Screen Keyboard Shortcuts

Depending on the type of application window you are using (full screen, standard, or seamless), you can use shortcut keys (see Table 2) to manage windows. Note that you can also define shortcuts for launching applications (see "Keyboard").

TIP: The shortcut keys Alt+DownArrow (allows you to switch windows using a dialog box) and Alt+Ctrl+DownArrow (minimizes or maximizes all windows) are useful for navigating multiple remote sessions without having to log out.

CAUTION: If inside a session, some connection types will grab all the keystrokes and the shortcuts may not always work. Be sure to check product release notes for the latest details.

Table 2 Window-related Shortcut Keys

Window Action	Press
Maximize window	Alt+F10
Switch windows using a dialog box.	Alt+DownArrow
Minimize/maximize all windows	Alt+Ctrl+DownArrow
Move window with arrow keys	Alt+F7 and press an arrow key
Resize window	Alt+F8 and press an arrow key
Close the window	Alt+F4

Configuring Thin Client Settings and Connections

While the use of Wyse INI files is recommended to configure thin client settings and connections available to users (see "Central Configuration: Automating Configurations"), you can use dialog boxes on a thin client to:

- Set up your thin client hardware, look and feel, and system settings (see "Configuring System Settings").
- Configure and add connections to your *Home* screen for use (see "Configuring Connections").

Connecting to Network and Session Services

Use the *Network Manager* icon, located on the right side of the Menu bar, to display information about the status of your network connection and to connect or disconnect.

Use the following guidelines:

- Click the **Network Manager** icon to display the *Wired Network* and *Wireless Network* menus. For example you can click the **Network Manager** icon, and then select an available wired or wireless network to use.
- Right-click the **Network Manager** icon to display the *Enable Networking*, *Enable Wireless*, *Enable Notifications*, *Connection Information*, and *About* options. For example, you can right-click the **Network Manager** icon, and then click **Enable Wireless** to remove the check and disable wireless.
- Hover your mouse pointer over the icon to view a message displaying the status (*No Network Connection*, *Wired Network Connection Active*, and *Wireless Network Connection Active*) and name of the network to which your thin client is connected. For example, connecting your thin client to a wired network (by attaching the network cable to your thin client) displays the *Wired Network Connection Active* status.

For wireless connections (802.11b/g/n Wireless LAN), you can click the *Wireless Network Connection* icon (or click the *Network Manager* icon) in the menu bar to see if a wireless network connection is available. You can click an available wireless network connection to open and use the **Wireless Network Authentication** dialog box. After authentication, the wireless network is available for use.

TIP: For information on importing certificates that your network may require (according to your administrator), see "Import Certificates."

Connecting to a Printer

To connect a printer to your thin client through a USB port, you will need a USB-to-printer adapter cable (not included). Before use, you may need to install the driver for the printer by following the printer driver installation instructions. For information on connecting to printers, refer to "Printers."

Connecting to a Monitor

Monitor connections can be made using the DVI (digital) monitor port and the proper Wyse monitor cables/splitters. For VGA (analog) monitor connections, you must use the included DVI-to-VGA adapter. For information on configuring display settings, see "Display."

TIP: Dual Monitors - When using a DVI to DVI/VGA splitter with VGA and DVI monitors at the same time, note that the VGA monitor will be the primary monitor.

Locking, Logging Out, Shutting Down, Restarting, and Suspending

After using your thin client, you can click the **Quit** icon and select one of the following (depending on user privilege, some options may not be available for use; note also that the shutdown screen is not configurable using INI parameters):

- **Lock** - Locks your thin client (display is blank after you click the icon). To unlock your thin client, move the mouse, enter your credentials, and then click **Unlock**.
- **Logout** - Logs you out of your session (however, the thin client continues to run).
- **Shutdown** - Shuts down and turns off your thin client.
- **Restart** - Shuts down and restarts your thin client.
- **Suspend** - Places the thin client in *Standby* mode to preserve power. To exit *Standby* mode, click the mouse, or press the space bar on the keyboard, or press the return key on the keyboard.

Additional Getting Started Details

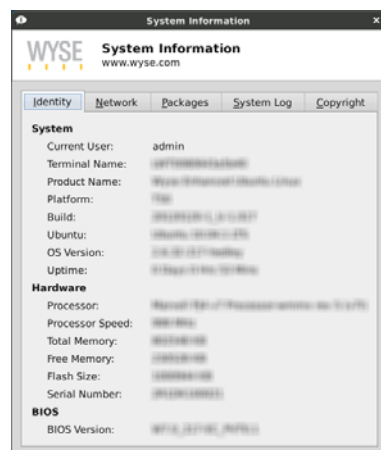
This section includes additional details on the following:

- "Viewing System Information"
- "Using Wyse Terminal"
- "Restoring Default Settings with WLoader Setup"

Viewing System Information

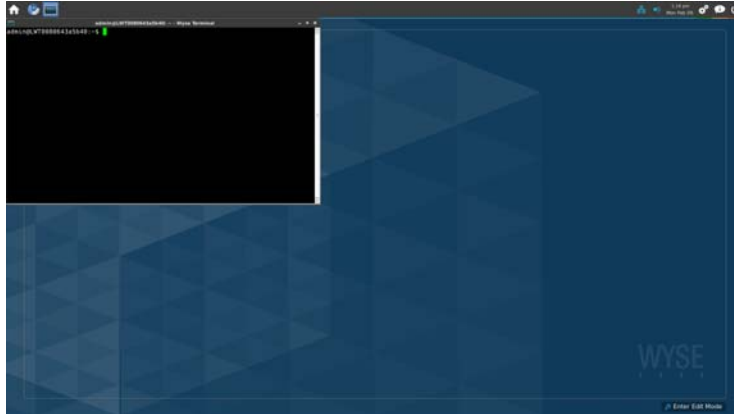
Use the **System Information** dialog box (click the **System Information** icon in the *Menu Bar*) to view *Identity*, *Network*, *Package*, *System Log*, and *Copyright* information:

- **Identity tab** - Displays identity information such as Current User, Terminal Name, Product Name, Platform, Build, Ubuntu, OS Version, Uptime, Processor, Processor Speed, Total Memory, Free Memory, Flash Size, Serial Number, and BIOS Version.
- **Network tab** - Displays network information for ethernet (*eth0*) and wireless LAN (*wlan0*) such as MAC Address, Network Speed, MTU, IP Address, IPv6 Address, Subnet Mask, Gateway, Domain, Primary DNS, Secondary DNS, DHCP Server, Lease, and Elapsed time.
- **Packages tab** - Displays the *Package* information, including packages names, versions, and sizes that are installed on the thin client.
- **System Log tab** - Displays the *System Log* information, including various messages generated during the operation of the thin client.
- **Copyright tab** - Displays the software copyright and patent notices.



Using Wyse Terminal

Clicking the **Terminal** icon on the *Home* screen opens the Wyse Terminal emulator window. Wyse Terminal allows you access to a text terminal and all its applications such as command line interfaces (CLI) and text user interface applications. You can click the *Window menu* (upper left window icon in the terminal window) to open and use available menu options. You can type **help** and press **Enter** to display a verbose message describing available options. **NOTE:** Terminal is for various low level administrative purposes. It is available only to users with high privileges. It is recommended for experienced administrators who have extensive knowledge of the Linux system.



Restoring Default Settings with WLoader Setup

Depending on the default settings you want to restore on the thin client, you can use the:

- *WLoader Setup* to restore various default values (see "Accessing Thin Client Boot Order Settings")
- *Recovery* option to restore the complete image including removing any updated packages (see "Restoring the Complete Image")

Accessing Thin Client Boot Order Settings

1. Power off the device.
2. Press and hold the **Delete** key while pressing and holding the *Power* button to power on the device.
3. When the *Activity* light (next to the *Power* button) blinks, release the *Power* button.
4. When the BIOS password prompt is displayed, release the **Delete** key.
5. Type **Fireport** as the password to enter and use the *WLoader Setup*. For example, you can use the *Boot Order* to select the boot option you want.

Restoring the Complete Image

1. Power off the device.
2. Press and hold the **P** key while pressing and holding the *Power* button to power on the device.
3. When the *Activity* light (next to the *Power* button) blinks, release the *Power* button.
4. When the BIOS password prompt is displayed, type **Fireport** as the password.
5. When the one-time boot menu of options is displayed, select the **Recovery** option and then press **Enter** (restores the complete image and removes any updated package).

This page intentionally blank.

3

Configuring System Settings

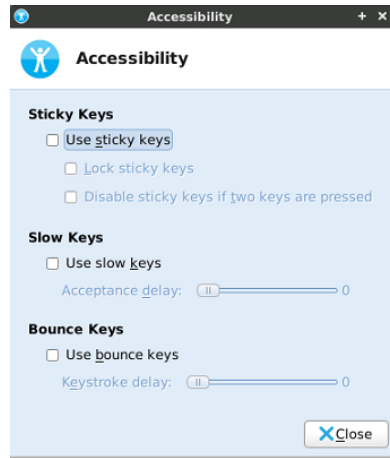
Clicking the **System Settings** icon in the *Menu bar* displays the following *System Settings* options that you can configure locally on a thin client using dialog boxes (depending on user privilege level, some dialog boxes and options may not be available for use):

TIP: While it is not recommended to use dialog boxes for configuring thin client system settings, they are available in case you want to temporarily override central default configurations or you do not have the option to set up central configuration (smaller environments). In general, it is recommended that you use central configuration to enable you to automatically push any desired default configuration to all supported thin clients in your environment (see "Central Configuration: Automating Configurations"). In addition, the Wyse USB Firmware Tool also provides a simple USB imaging solution for supported devices (see "Enhancing Your Experience with Wyse Software").

- "Accessibility"
- "Appearance"
- "Background"
- "Date & Time"
- "Device Settings"
- "Diagnostics"
- "Display"
- "Ericom PowerTerm® TEC (Managing Servers Available for Connections)"
- "Citrix Settings (Global Settings)"
- "Import Certificates"
- "INI (Source) Settings"
- "Keyboard"
- "Language Support"
- "Mixer"
- "Mouse"
- "Network Connections"
- "Network Proxy"
- "Printers"
- "RDP Settings"
- "Screensaver"
- "TCX Audio"
- "TCX USB Virtualizer"
- "User Administration"
- "VNC Server"
- "WDM"

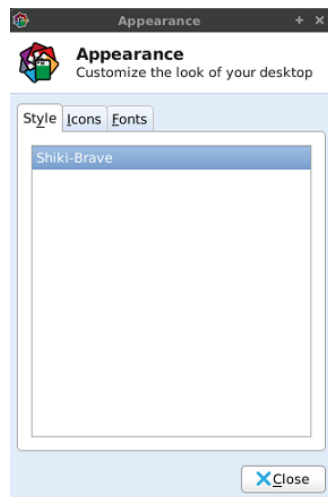
Accessibility

Use the **Accessibility** dialog box (click **Accessibility**) to set *Sticky Keys*, *Slow Keys*, and *Bounce Keys* options.



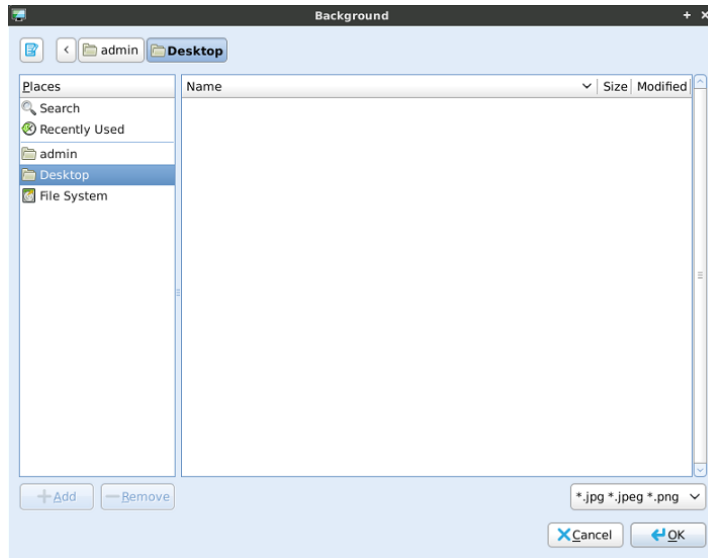
Appearance

Use the **Appearance** dialog box (click **Appearance**) to customize your *Home* screen (*Style*, *Icons*, and *Fonts*).



Background

Use the **Background** dialog box (click **Background**) to customize your desktop background.



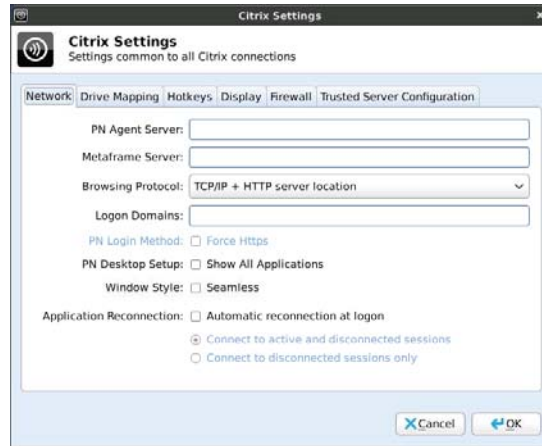
TIP: PNG files are recommended for most single monitor setups. However, on dual-monitor setups, a JPG file is recommended (as there is some color variance due to Y-Cable or DVI/VGA output when using PNG files).

Citrix Settings (Global Settings)

Use the **Citrix Settings** dialog box (click **Citrix Settings**) to configure the common settings you want for all ICA connections (ICA Global Settings). After configuring, be sure to click **OK**.

Network

Use the *Network* tab to configure the servers and reconnection settings.

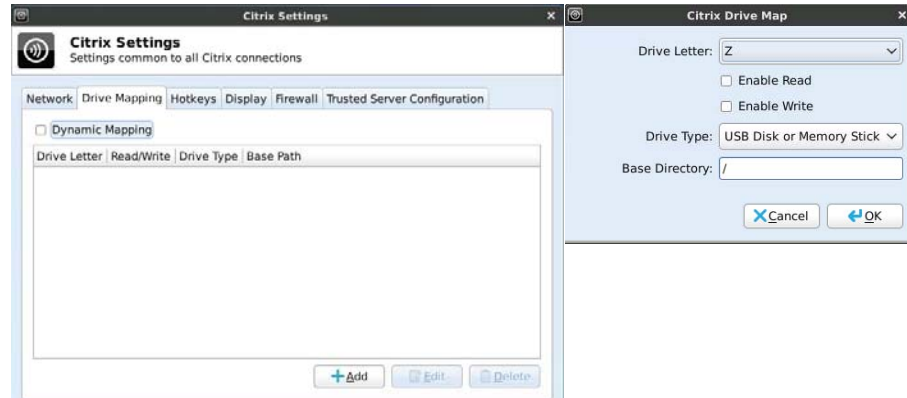


Use the following guidelines:

- **PN Agent Server** - Enter the PN Agent Server you want to use (this can be a list of servers with each server separated by a semi-colon).
- **Metaframe Server** - Enter the Metaframe Server you want to use (this can be a list of servers with each server separated by a semi-colon).
- **Browsing Protocol** - Select the browsing protocol to use from the list.
- **PN Logon Domains** - Enter the *PN Logon Domains*, and then select your *PN Login Method* and *PN Desktop Setup* settings.
- **Window Style** - Select *Seamless* to display the connection in a seamless window.
- **Application Reconnection** - Select the **Automatic reconnection at logon** check box to enable reconnection, and then select the connect option you want.

Drive Mapping

Use the *Drive Mapping* tab to map drives on the server to devices on the thin client, and to view and manage (add, edit, and delete) the list of current drives (including drive information) mapped on the thin client.



Adding Drives

1. Clear the **Dynamic Mapping** check box, and then click **Add** to open the **Citrix Drive Map** dialog box.
2. Select a drive letter (**A** to **Z**) from the *Drive Letter* list.
3. To enable or disable reading and writing for the drive, select or clear the **Enable Read** and **Enable Write** check boxes.
4. Select a drive type (**USB Floppy**, **USB CDROM**, **USB Disk or Memory Stick**, or **Local or Mounted Disk**) from the *Drive Type* list.
5. (Optional) Enter the directory on the USB device to access in the **Base Directory** text box.
6. Click **OK** to add the drive to the list of available drives.

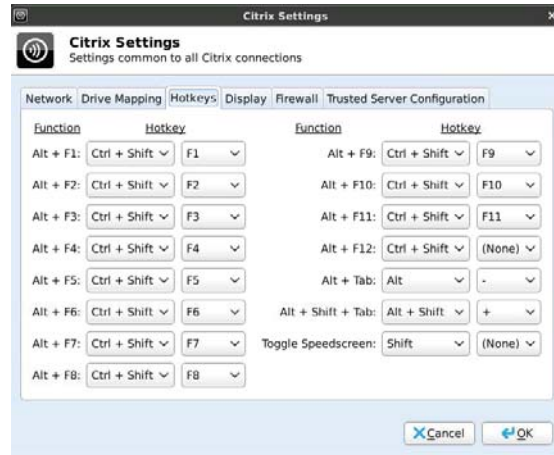
Editing and Deleting Drives

To edit or delete a drive, select a drive from the list of available drives and do one of the following:

- **Edit** - Click **Edit** and configure the drive as described in "Adding Drives."
- **Delete** - Click **Delete** to remove the drive.

Hotkeys

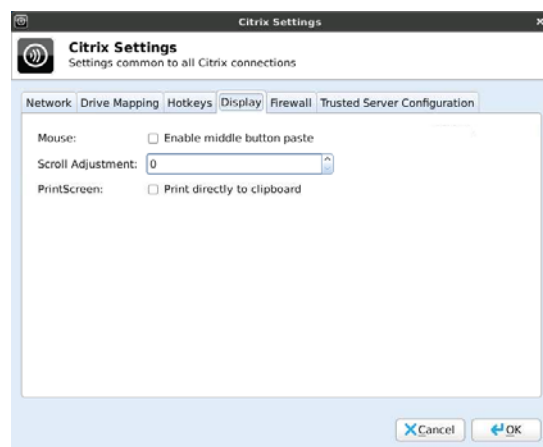
Use the *Hotkeys* tab to map hotkeys on the thin client (select a **Hotkey** option using the *Hotkey* lists for each function you want).



Display

Use the *Display* tab to set:

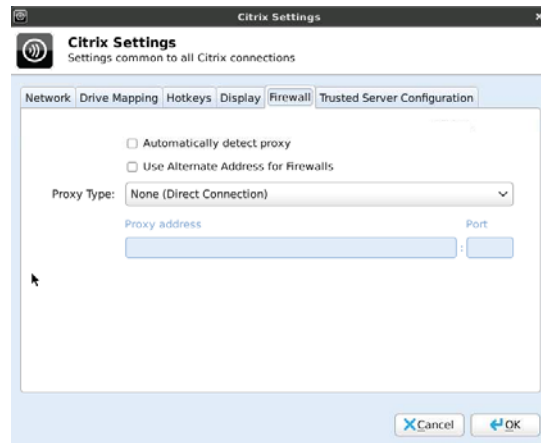
- **Mouse** - Enables the middle mouse button to paste copied content.
- **Scroll Adjustment** - If you encounter over-scrolling when using certain published applications, increase the adjustment by 100 until the display improves (maximum scroll adjustment is 1000).
- **PrintScreen** - Select to use the *Print Screen* key to capture an image of the screen to the *Clipboard* (used for ICA XCapture support). If the check box is selected, a message appears warning about the influence of this setting on other applications).



Firewall

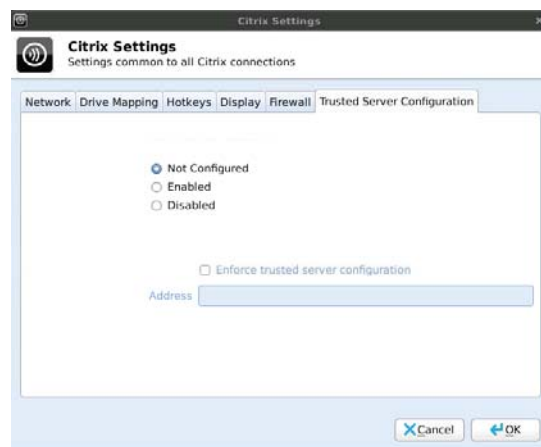
Use the *Firewall* tab to set the firewall options on the thin client:

- **Automatically detect proxy** - Detects proxy servers automatically.
- **Use Alternate Address for Firewalls** - Enables connections behind a firewall
- **Proxy Type** - Select a Proxy Type from the list and if necessary (**Secure (HTTPS)** or **SOCKS**, enter the *Proxy Address* and *Port*).



Trusted Server Configuration

Use the *Trusted Server Configuration* tab to set and enforce the trusted server configuration. To enforce a trusted server configuration, select the **Enabled** option, select the **Enforce trusted server configuration** check box, enter the *Address* of the trusted server, and then click **OK** (you can also use the *Enabled* or *Disabled* options to quickly enable or disable the enforcement configuration).

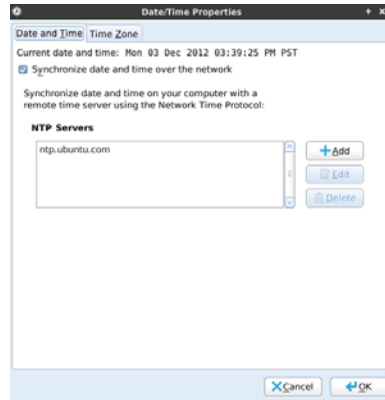


Date & Time

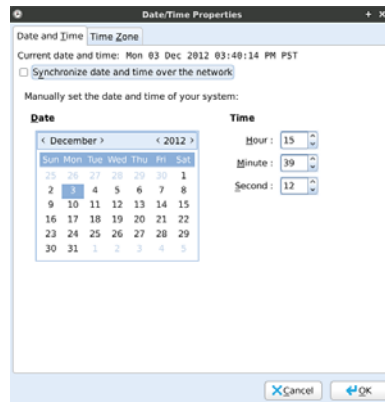
Use the **Date/Time Properties** dialog box (click **Date & Time**) to set *Date & Time* and *Time Zone* options. After configuring, be sure to click **OK**.

Use the *Date and Time* tab to:

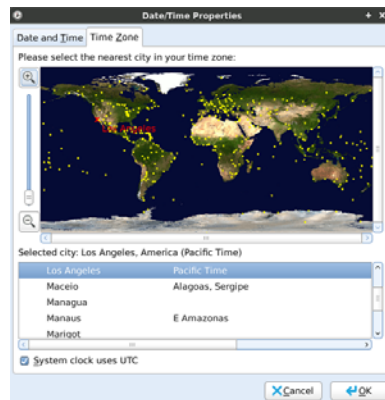
- **Synchronize with a Network Time Protocol (NTP) server** - Enter the IP Address or hostname of the NTP server (the current NTP server is shown) to synchronize the clock time and date of the thin client. You can also use **Add**, **Edit**, and **Delete** to manage your list of NTP servers available.



- **Manually set the date and time** - Clear the **Synchronize date and time over the network** check box, and then select your date and time settings.



Use the *Time Zone* tab to select your time zone and whether or not to automatically enable daylight savings time (select or clear the **System clock uses UTC** check box).



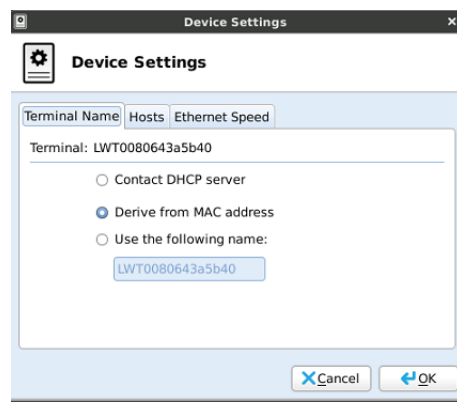
Device Settings

Use the **Device Settings** dialog box (click **Device Settings**) to set the parameters of your device (*Terminal Name*, *Hosts*, and *Ethernet Speed*). After configuring, be sure to click **OK**.

Terminal Name

Use the *Terminal Name* tab to obtain the device name:

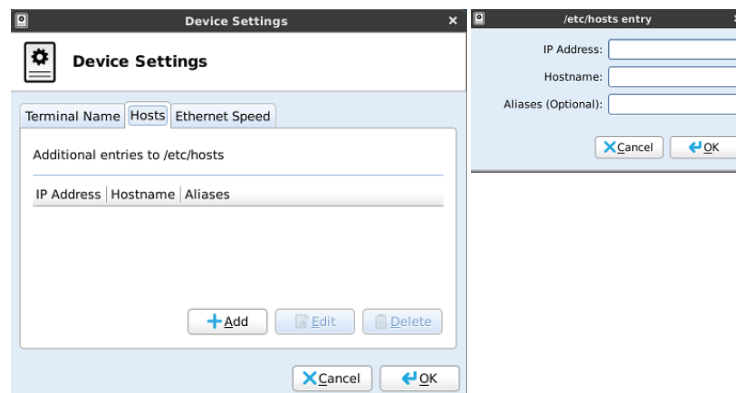
- **Contact DHCP server** - Obtains the name from the DHCP server.
- **Derive from MAC address** - Generates the name from the device MAC address.
- **Use the following name** - Allows you to manually enter a name.



Hosts

Use the *Hosts* tab to add mappings of IP addresses to hostnames that are not available through DNS (the names of mapped addresses appear on the *Hosts* tab):

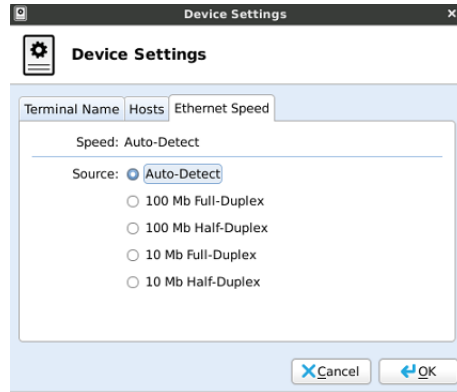
- **Adding an IP address** - Click **Add** to open the **/etc hosts entry** dialog box, enter an *IP Address*, *Hostname*, *Aliases* (optional), and then click **OK**.
- **Editing a Host** - Select a host from the list, click **Edit**, and configure the host.
- **Deleting a Host** - Select a host from the list, click **Delete**, and confirm.



Ethernet Speed

Use the *Ethernet Speed* tab to select the Ethernet speed.

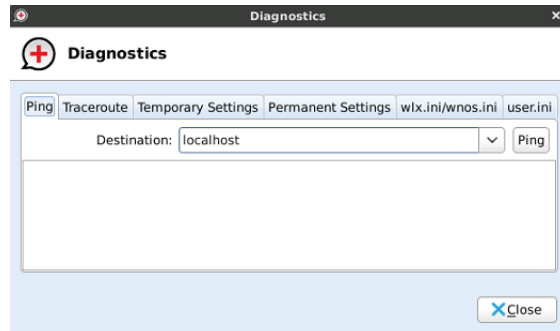
TIP: It is recommended to use *Auto-Detect* in a 1 GB network.



Diagnostics

Use the **Diagnostics** dialog box (click **Diagnostics**) to select and use a diagnostic tool:

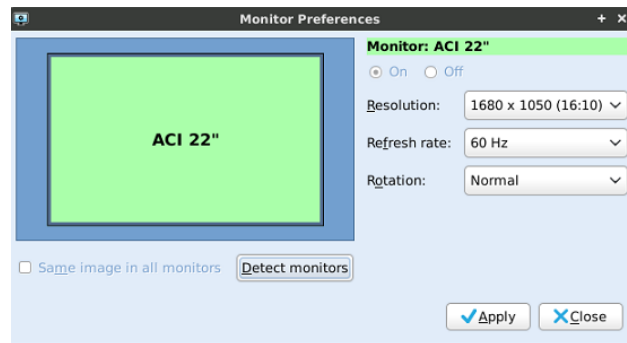
- **Ping** - Enter or select a destination from the *Destination* list and click **Ping**.
- **Trace Route** - Enter or select a destination from the *Destination* list and click **Trace Route** (diagnostic information appears on the *Trace Route* tab).
- **Temporary Settings** - View the temporary settings of the thin client.
- **Permanent Settings** - View the permanent settings of the thin client.
- **wlx.ini/wnos.ini** - View the *wlx.ini* or *wnos.ini* file as copied to the thin client.
- **user.ini** - View the *user.ini* file as copied to the thin client.



Display

Use the **Monitor Preferences** dialog box (click **Display**) to set the monitor display preferences (*Primary Display Output*, *Resolution*, *Refresh Rate*, and *Rotation*). For most monitors, resolution is obtained automatically from the monitor. After configuring, be sure to click **Apply**.

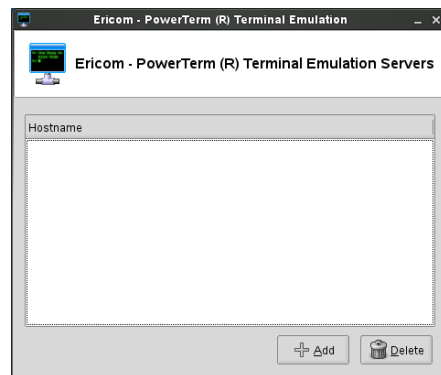
TIP: Dual Monitors - When using a DVI to DVI/VGA splitter with VGA and DVI monitors at the same time, note that the VGA monitor will be the primary monitor.



TIP: Single-monitor resolution - Maximum is 1920x1080 (16:9); Minimum is 640x480 (4:3).
Dual-monitor resolution - Maximum is 1280x1024 (5:4); Minimum is 720x400 (9:5).

Ericom PowerTerm® TEC (Managing Servers Available for Connections)

- Use the **Ericom PowerTerm Terminal Emulation** dialog box (click **Ericom PowerTerm**) to view and manage (add and delete) the list of servers that are presented when an Ericom PowerTerm® TEC connection is being configured for thin client access to network resources as described in "Ericom PowerTerm® TEC."



Use the following guidelines:

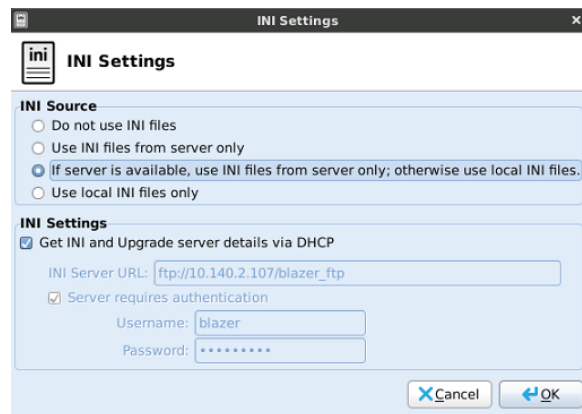
- **Adding a hostname** - Click **Add** to open the **Add host** dialog box, enter a *Hostname*, and then click **OK**. The hostname is added to the *Hostname* list.
- **Deleting a hostname** - Select a hostname and click **Delete**. The hostname is removed from the *Hostname* list.

INI (Source) Settings

Use the **INI Settings** dialog box (click **INI Settings**) to direct the thin client to the source (server location) of INI files.

CAUTION: It is recommended to obtain INI files through a DHCP server using DHCP options rather than through a static IP address. For information about how INI files are downloaded from a server, see "How to Set Up Automatic Configuration."

TIP: Wyse devices also support INI changes through Wyse Device Manager's DDC (see "Enhancing Your Experience with Wyse Software" and "WDM").



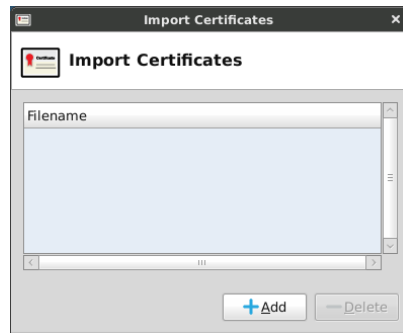
Use the following guidelines:

- **Do not use INI files** - Use this option when you want to use only locally configured settings (using the thin client dialog boxes available) and do not want to use available INI files on the network or local INI files.
- **Use INI files from server only** - Use this option when you want to use INI files from the specified server only (for example, you do not want to use local INI files or do not want to allow INI use when disconnected from the server for security reasons). When using this option you can direct the thin client to the server location through either of the following ways:
 - **DHCP Server** - Select the **Get INI and Upgrade server details via DHCP** check box. The DHCP server will direct the thin client (using DHCP options) to the server location where the INI files reside.
 - **Manually entered server address** - Clear the **Get INI and Upgrade server details via DHCP** check box and enter the static *INI Settings (INI Server URL)*, and optionally the *Username* and *Password* of the server, if selecting the *Server requires authentication* check box).
- **If server is available, use INI files from server only; otherwise use local INI files** - Use this option when you want to use INI files from the specified server, however, local INI files can be used if that server is unavailable. When using this option you can direct the thin client to the server location through either of the following ways:
 - **DHCP Server** - Select the **Get INI and Upgrade server details via DHCP** check box. The DHCP server will direct the thin client (using DHCP options) to the server location where the INI files reside.
 - **Manually entered server address** - Clear the **Get INI and Upgrade server details via DHCP** check box and enter the *INI Settings (INI Server URL)*, and optionally the *Username* and *Password* of the server, if selecting the *Server requires authentication* check box).
- **Use local INI files only** - Use this option when you want to use only local INI files and do not want to use available INI files on the network.

TIP: INI files can be cached locally if using the *EnableLocal* and *LocalCopy* INI parameters; see *Reference Guide: Wyse® Enhanced Ubuntu™ Linux INI Files*.

Import Certificates

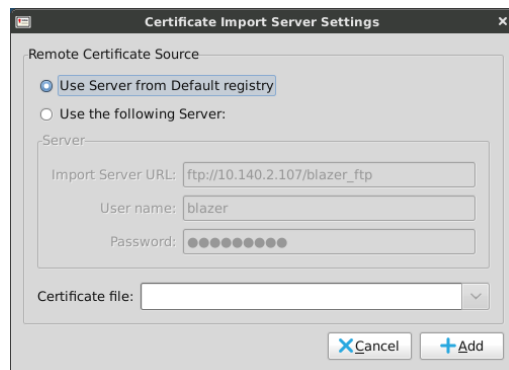
Use the **Import Certificates** dialog box (click **Import Certificates**) to import and manage (add and delete) ICA Digital Certificates as described in "Adding Certificates from a Remote Server" and "Adding Certificates from a Local Device."



Adding Certificates from a Remote Server

Use the following guidelines (certificate files you add from a remote server must end with the extension `.crt`, and be DER-encoded or Base64-encoded):

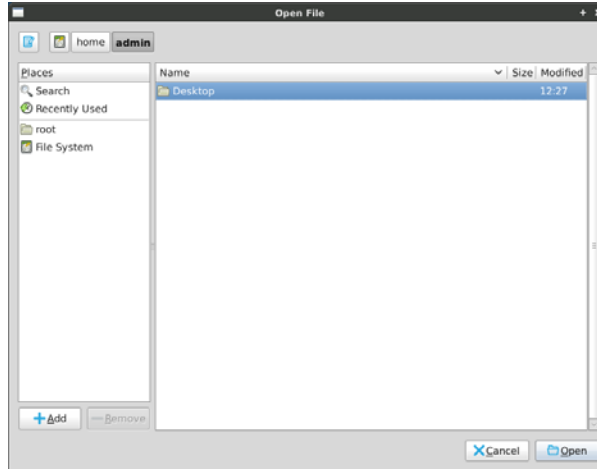
1. In the **Import Certificates** dialog box, click **Add** to open the **Add Certificate** dialog box.
2. Select the **Remote Server** option, and then click **Next** to open the **Certificate Import Server Settings** dialog box.



3. Select the *Remote Certificate Source* server option that contains the certificate you want. If you select the **Use the following Server** option, enter the *Import Server URL* (supported protocols are ftp, http, and https) and the *User name*, and *Password* required for that server.
4. Select the certificate file from the *Certificate file* list (if the *Import Server URL*, *User name*, and *Password* are entered correctly, this list automatically displays the names of available certificates on the server).
5. After the configuring the *Remote Certificate Source* server option you selected, click **Add**.

Adding Certificates from a Local Device

1. In the **Import Certificates** dialog box, click **Add** to open the **Add Certificate** dialog box.
2. Select the **Local Server** option, and then click **Next** to open the **Open File** dialog box.

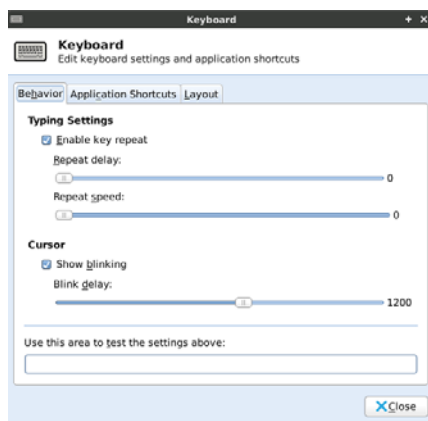


3. Use the folders and command buttons to find and select the certificate you want to use.

Keyboard

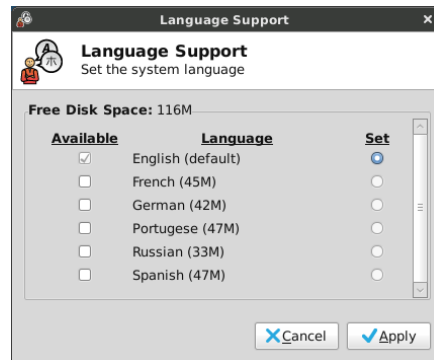
Use the **Keyboard** dialog box (click **Keyboard**) to select *Behavior* (repeat key and cursor blinking options), *Application Shortcuts* (add/remove shortcuts for launching applications and reset to defaults options), and *Layout* (keyboard models and layout options).

TIP: For information on available *Home* screen keyboard shortcuts, see "Home Screen Keyboard Shortcuts."



Language Support

Use the **Language & Text** dialog box (click **Language Support**) to select the *Language* and *Text* format options of the User Interface (UI) from the list of supported languages. Note that currently only English is supported.



Mixer

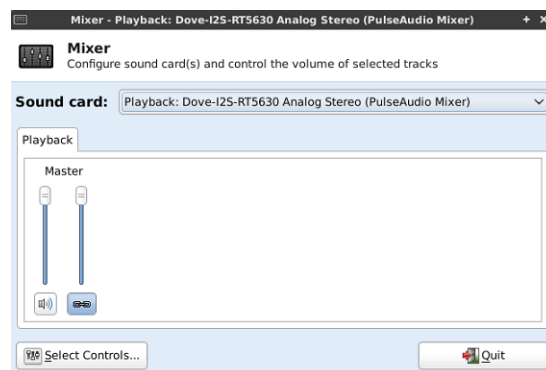
Use the **Mixer** dialog box (click **Mixer**) to configure *Playback* (Master system sounds) volume and other available controls.

Select the *Sound Card* option you want and use the **Select Controls** dialog box (click **Select Controls**) to select the check boxes of the audio controls you want visible (tabs) in the **Mixer** dialog box (available for configuration). For example, you can display a capture sound card option (for recording sounds), output sound card (with playback, capture, and switches preferences), and so on.

TIP: Clicking the volume button toggles the mute on and off.

Clicking the link button toggles the select-all-sliders feature (all sliders move as one) on and off.

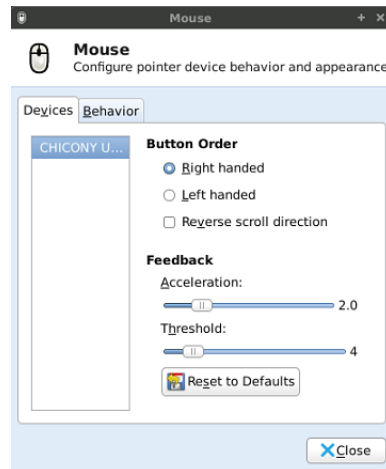
Clicking the record button toggles the record sound on and off.



TIP: For these settings to take effect, sound must be supported and enabled on the server used for ICA connections, RDP connections, or MPlayer. Sound requires significant bandwidth that may not be available on some WAN and dial-up connections.

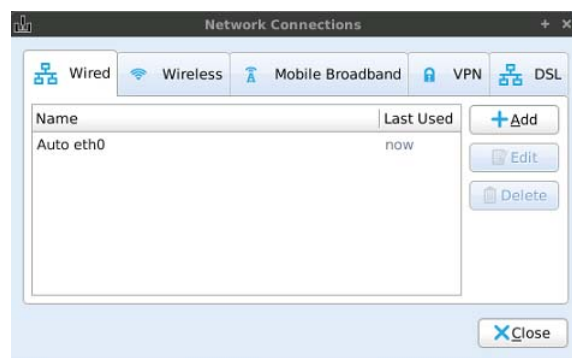
Mouse

Use the **Mouse** dialog box (click **Mouse**) to select *Devices* (button order, feedback, and reset to defaults options) and *Behavior* (drag-and-drop and double-click options) mouse preferences.



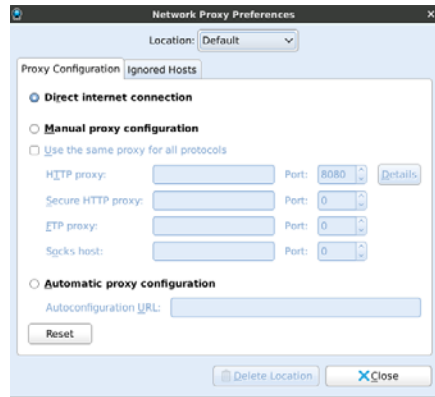
Network Connections

Use the **Network Connections** dialog box (click **Network Connections**) to configure the settings you want for supported network connections. Use the *Wired*, *Wireless*, *Mobile Broadband*, *VPN*, and *DSL* tabs to view and manage (add, edit, and delete) the list of network connections configured on the thin client. By default, your thin client obtains information from the DHCP server about network connections (highly recommended), but you can manually enter connection information (provided by your network administrator) to connect to other networks (experienced users only).



Network Proxy

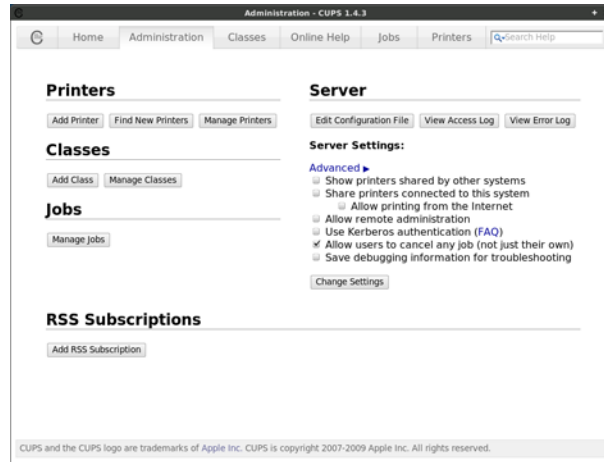
Use the **Network Proxy Preferences** dialog box (click **Network Proxy**) to configure the *Proxy Configuration* and *Ignored Hosts* options you want for supported network connections. Use the *Proxy Configuration* and *Ignored Hosts* tabs to view and manage proxy settings and list of hosts to ignore (information provided by your network administrator) for the network connections configured on the thin client (experienced users only).



Printers

Use the **Printers** dialog box (click **Printers**) for printer related tasks.

TIP: While this section provides an overview of printer related guidelines to use, see "Installing a Network Printer" and "Installing a Local Printer" for detailed procedures. For full details on Linux printing, refer to CUPS documentation.



Use the following guidelines:

- **CUPS and Home tabs** - View and access CUPS information (click the **CUPS** tab or the **Home** tab) - CUPS is the standard-based, open source printing system developed by Apple Inc. for Mac OS[®] X and other UNIX[®]-like operating systems.
- **Administration tab**

Printers:

- **Add Printer** - Add and configure a network or local printer (click the **Administration tab > Add Printer** to open and use the *Add Printer* wizard). See "Installing a Network Printer" and "Installing a Local Printer" for detailed procedures.
- **Find New Printers** - Find available printers for use.
- **Manage Printers** - View the list of currently configured printers (click **Administration tab > Manage Printers**). In addition, you can:
 - Select the default printer (select a printer in the list and click **Printer > Set as Default**). Note that administrators can specify system-wide and personal default printers.
 - Change printer settings (right-click a printer in the list, select **Properties**, and then click **Settings**).
 - Change printer policies (right-click a printer in the list, select **Properties**, and then click **Policies**).
 - Change user access to the printer (right-click a printer in the list, select **Properties**, and then click **Access Control**).
 - Change printer job options (right-click a printer in the list, select **Properties**, and then click **Job Options**).
 - Delete a printer (right-click a printer in the list, select **Delete**, and click **OK**).

Classes:

- **Add Class** - Add and configure a Class of printers (click the **Administration tab > Add Class** to open and use the *Add Class* wizard).
- **Manage Classes** - View the list of currently configured Classes of printers (click **Administration tab > Manage Classes**).

Jobs:

- **Manage Jobs** - Change printer job options (click **Administration tab > Manage Jobs**).

Server:

- **Edit Configuration File** - Change the server configuration file (click **Administration tab > Edit Configuration File**).
- **View Access Log** - View the access log to the server (click **Administration tab > View Access Log**).
- **View Error Log** - View the error log to the server (click **Administration tab > View Error Log**).
- **Advanced Check Boxes** - Select or clear the check boxes you want in the *Advanced* list; after making your selections, be sure to click **Change Settings**.

RSS Subscriptions:

- **Add Subscription** - Add and configure an RSS subscription (click the **Administration tab > Add Subscription** to open and use the *Add RSS Subscription* wizard).
- **Classes tab** - Search for printers of a class type.
- **Online Help tab** - Access CUPS online help interface.
- **Jobs tab** - Search and display printing jobs.
- **Printers tab** - Search and display printers (with printer details).

Installing a Network Printer

1. Click **Administration tab > Add Printer** to open the *Add Printer* wizard.



2. Select the printer option you want from the *Discovered Network Printers* or *Other Network Printers* lists and follow the *Add Printer* wizard using the following guidelines:
 - **AppSocket/HP JetDirect** - Use this option for a printer connected directly to the network instead of through a computer.
 - **Internet Printing Protocol (IPP)** - Use this option for a printer attached to a different Linux system on the same network running CUPS or a printer configured on another operating system to use IPP (http printing).
 - **Internet Printing Protocol (HTTP)** - Use this option for a printer attached to a different Linux system on the same network running CUPS or a printer configured on another operating system to use HTTP (ipp printing).
 - **LPD/LPR Host or Printer** - Use this option for a printer attached to a different UNIX system that can be accessed over a TCP/IP network (for example, a printer attached to another Linux system on your network) or a thin client used as an LPD (Line Printer Daemon) server for LPD printing requests from the network. You can enter the DNS or WINS name of the server for the network printer, or an IP address can also be entered. Note that if the printer is attached to another thin client on your network, the entry in the *Host* box is the name or address of that thin client.

Installing a Local Printer

Connect the printer cable to your thin client and use the following guidelines:

1. Click **Administration tab > Add Printer** to open the *Add Printer* wizard.



2. Be sure the USB printer you connected to your thin client is selected and click **Continue**.

TIP: You can use the **Serial Port # 1** and **Serial Port # 2** options as needed for your local serial port printers.

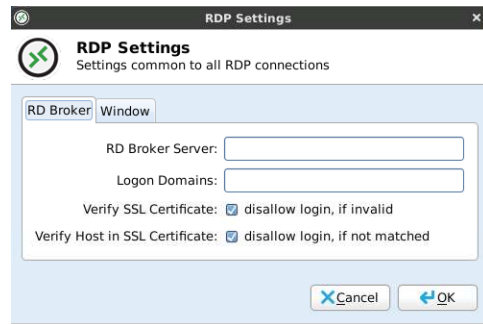
3. Select the option with which you want to obtain your printer driver and click **Continue**.
4. Select the Model and Driver and click **Continue**.
5. Enter the *Printer Name*, *Description*, *Location*, and then click **Apply**. The printer is added to the **Manage Printers** list (click **Administration tab > Manage Printers**) and is ready for use.

RDP Settings

Use the **RDP Settings** dialog box (click **RDP Settings**) to configure the common settings you want for all RDP connections. After configuring, be sure to click **OK**.

RD Broker

Use the *RD Broker* tab to configure the servers and reconnection settings for login usage.

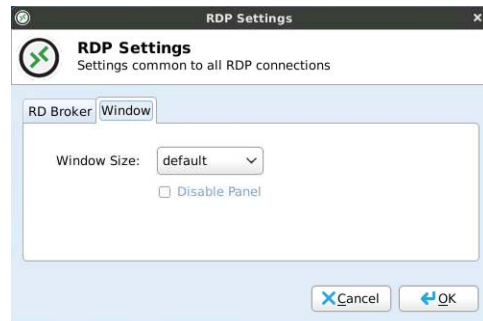


Use the following guidelines:

- **RD Broker Server** - Enter the RD Broker Server you want (this can be a list of servers with each server separated by a semi-colon).
- **Logon Domains** - Enter the *Logon Domains*, and then select your *Verify SSL Certificate* and *Verify Host in SSL Certificate* settings.

Window

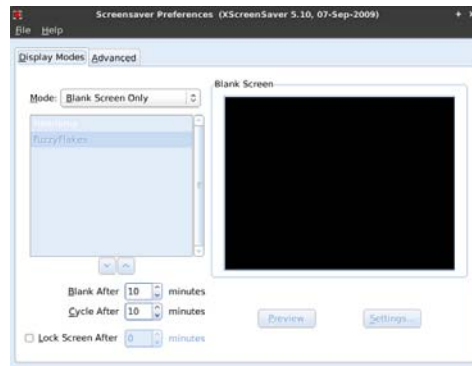
Use the *Window* tab to select the *Window Size* you want, and to disable the panel (if you want the window to appear without the panel while using the connection).



Screensaver

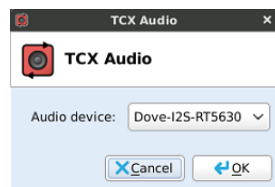
Use the **Screensaver Preferences** dialog box (click **Screensaver**) to *Display Modes* (select screen saver theme settings) and *Advanced* (display power management) settings.

TIP: Press the *Power* button to wake the computer from standby or sleep mode.



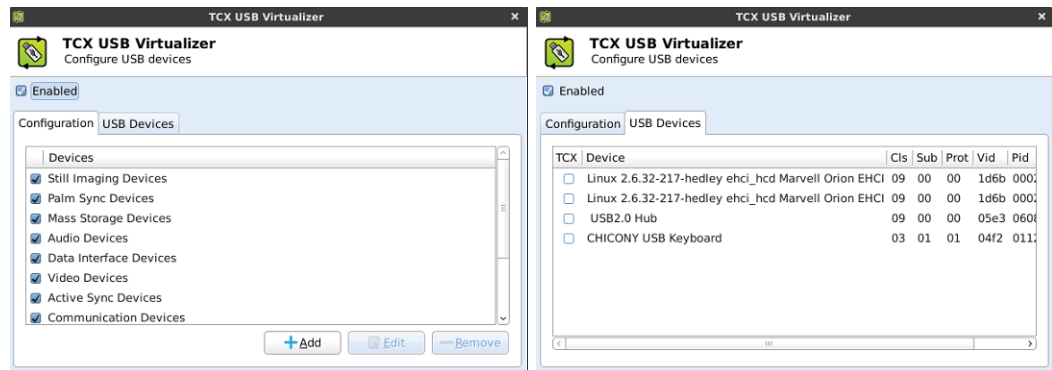
TCX Audio

Use the **Audio Devices** dialog box (click **TCX Audio**) to view and change the automatically-detected audio device (for example, a connected audio headset/device will be automatically detected) you want to use for your audio output (select the *Audio device* you want and click **OK**).



TCX USB Virtualizer

Use the **TCX USB Virtualizer Configuration Utility** dialog box (click **TCX USB Virtualizer**) to view and manage (add, edit, and delete) the list of current device classes (on the *Configuration* tab) and to view the list USB devices enabled or denied for use on the thin client (on the *USB Devices* tab). You can deny a device class, but still permit a USB device in that class to be used, by adding it to the *Devices* list of the *Configuration* tab.



Use the following guidelines:

- **Enabling USB devices** - Select the **Enabled** check box.
- **Allowing or denying USB device classes** - On the *Configuration* tab, select or clear the check box of a device class in the *Devices* list to allow or deny its use. For example, select **Smart Card Devices** to permit USB smart card devices to be used to log into virtual machines.
- **Adding a USB device** - On the *Configuration* tab, click **Add** to open the **Add** dialog box, enter a *Device Name*, select a class for the device from the *Class* list, enter the *Sub Class*, *Vendor ID*, *Protocol*, and *Product ID*, and then click **Add**. After you reboot your thin client, the name of the new device appears on the *Configuration* tab.
TIP: You can obtain device *Class*, *Sub Class*, *Protocol*, *Vendor ID*, and *Product ID* information by plugging the device into the USB port of your thin client and viewing the information displayed in the *USB Devices* tab.
- **Allowing or denying a USB device** - After you add a USB device, its name appears on the *Configuration* tab. Select or clear a USB device check box to allow or deny its use.

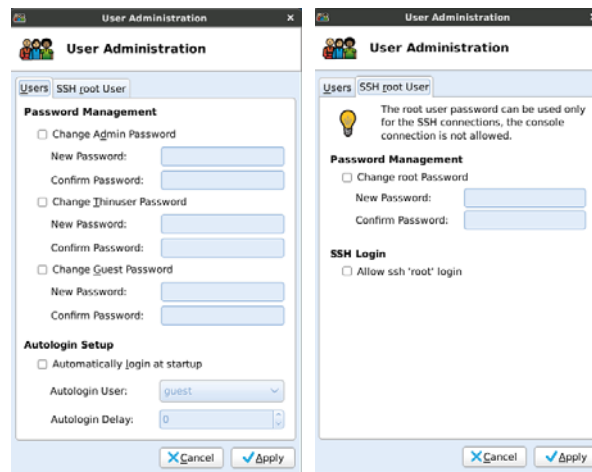
CAUTION: Use caution when using TCX USB Virtualizer on a terminal server, as allowing use of a USB device is global and not session restricted.

For information on the TCX USB Virtualizer component of Wyse TCX Suite software, refer to "Enhancing Your Experience with Wyse Software."

User Administration

Use the **User Administration** dialog box (click **User Administration**) to view and edit passwords for all users (built-in defaults) and to enable automatic login for a user (automatically log in a user at system start up). In addition, you can manage *SSH root User* password and login (using the *SSH root User* tab).

CAUTION: While this dialog box allows you to edit the passwords and automatic login for users of the thin client, you must use central configuration (INI files) to add or delete users beyond the built-in default users provided. In general, it is recommended that you use user.ini files to manage users for normal use cases. For example, a new user should be created through a user.ini file with the appropriate privilege level defined in the text file.



To edit a user password, select the change password check box you want, and then enter a new password in the **New Password** and **Confirm Password** boxes.

TIP: The *Users* tab can be a convenient way to locally change the password and enable automatic login for a specific user.

VNC Server

Use the **VNC Server Settings** dialog box (click **VNC Server**) to enable and disable the VNC server, and to use and change the server password.

TIP: The VNC server is enabled by default.



WDM

Use the **WDM Agent Configuration** dialog box (click **WDM**) to configure the Wyse Device Manager server location.

TIP: It is recommended that after configuring, you reboot the thin client.



To configure the WDM server location:

1. Enter the *WDM Server* IP address.
2. Enter the *Non-secure Port (HTTP)* for client to server communication (default, is **80**).
3. Enter the *Secure Port (HTTPS)* for client to server communication (default is **443**).
4. Select the *Discovery Settings* you want. For more information on WDM, see your WDM documentation.
5. Click **OK**.

TIP: Note that you can also configure the Wyse Device Manager server location through INI files (*wlx.ini*) or the DHCP Option tag 186 (see "Central Configuration: Automating Configurations").

This page intentionally blank.

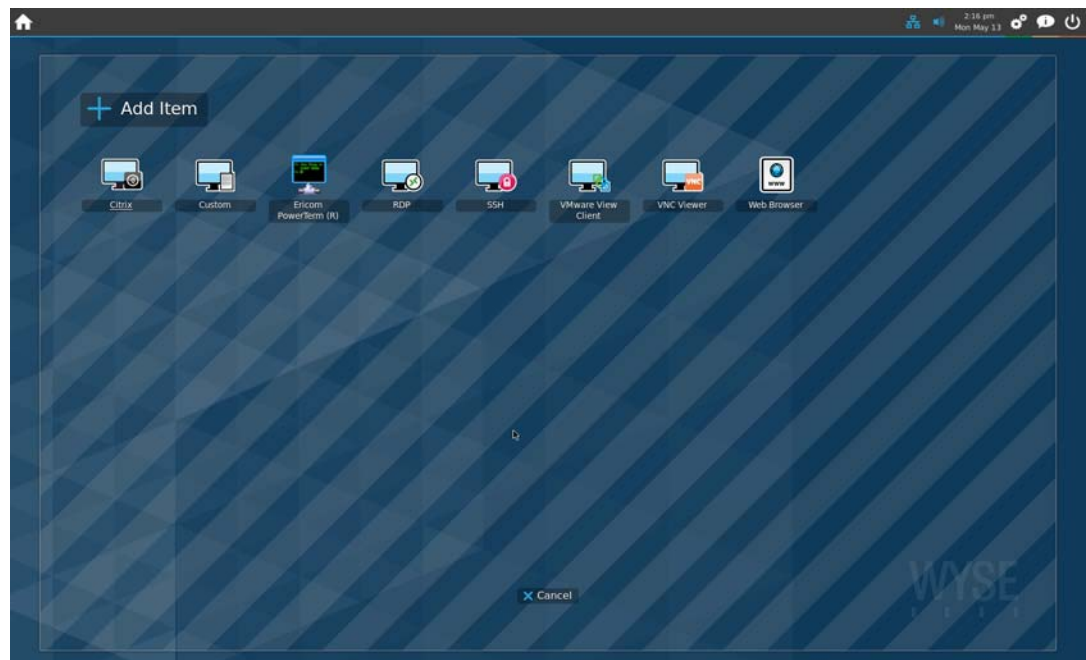
4

Configuring Connections

This chapter provides instructions on configuring and adding connections to your *Home* screen for use (to access the enterprise server environment available to the thin client).

TIP: While it is not recommended to use dialog boxes for configuring connections for thin client use, they are available in case you want to temporarily override central default configurations in some cases or you do not have the option to set up central configuration (smaller environments). In general, it is recommended that you use central configuration to enable you to automatically push any desired default configuration to all supported thin clients in your environment (see "Central Configuration: Automating Configurations"). In addition, the Wyse USB Firmware Tool also provides a simple USB imaging solution for supported devices (see "Enhancing Your Experience with Wyse Software").

Clicking **Enter Edit Mode > Add Item** on the *Home* screen opens the *Connection Manager*. Use the *Connection Manager* to add the following items to your *Home* screen for use (high privilege users only):

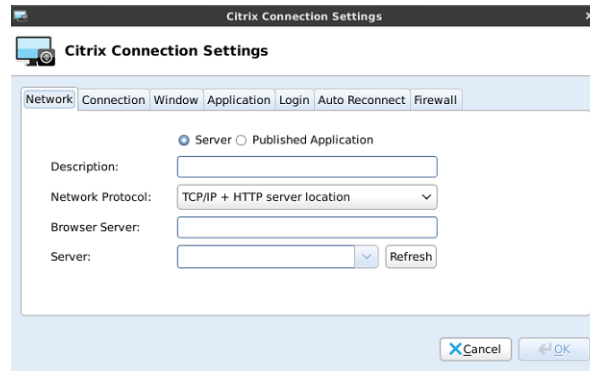


- "Citrix"
- "Custom"
- "Ericom PowerTerm® TEC"
- "RDP"
- "SSH"
- "VMware View Client"
- "VNC Viewer"
- "Web Browser"

Citrix

Use the **Citrix Connection Settings** dialog box (click **Citrix**) to set Citrix client connection configurations. After configuring, be sure to click **OK**.

TIP: When using multiple Citrix connections, you can use the *ICA Connection Center* to manage open Citrix connections. For information on using multiple Citrix connections, refer to the Wyse Knowledge Base on the Wyse Web site.



Network

Use the *Network* tab to configure the network settings:

- **Server** or **Published Application** - Select an option for making the connection.
- **Description** - Enter a name/label for the connection.
- **Network Protocol** - Select a network protocol.
- **Browser Server** - Enter the *Browser Server* name (this can be a list of server names with each name separated by a semi-colon).

TIP: You do not need to enter a browser server name if you do not want to connect to either a published application or a server by name. In addition, generating an ICA connection to a server using a server name in the *Server* text box for the connection does not require a *Browser Server* address, as long as the DNS information is properly entered.

- **Server** or **Application Name** - Select a server from the *Server* list or a published application from the *Application Name* list. If needed, click **Refresh** to refresh the list of servers or published applications.

TIP: You can enter only the IP address of the target server as long as there is no need to resolve a name.

Connection

Use the *Connection* tab to configure the connection settings:

- **Enable compression** - Enables compression.
- **Low bandwidth** - Enables low-bandwidth optimization.
- **Enable sound** - Enables sound.
- **Ping before connect** - Pings the connection to see if it is reachable before the connection is attempted.
- **Enable Middle Button Paste** - Enables middle button paste for the mouse.
- **Encryption** - Select an encryption type (default is **Basic**).

Window

Use the *Window* tab to select the *Window Colors* and the *Window Size* you want, and to disable the panel (if you want the window to appear without the panel while using the connection).

Application

Use the *Application* tab to enter the command line and Working Directory of the application (if you selected the **Published Application** option on the *Network* tab):

- **Command Line** - Enter the command line for the program on the server.
- **Working Directory** - Enter the working directory for the program.

Login

Use the *Login* tab to configure credentials used to automatically log in to the server:

- **User Name** - Enter a user name for the connection.
- **Password** - Enter the password.
- **Domain** - Enter the domain name.
- **Serial Number** - Enter the serial number for Metaframe environments that require the thin client license serial number.
- **Connect automatically after login** - Enables an automatic connection after successful login to the thin client.

TIP: The *User Name*, *Password*, *Domain*, and *Serial Number* fields are optional. If the *User Name*, *Password*, and *Domain* fields are blank, interactive login is required (users must enter the information at login time).

Auto Reconnect

Use the *Auto Reconnect* tab to enable automatic reconnect after a disconnection (select the **Enable Auto Reconnect** check box, and then select the amount of time to delay the reconnection attempt after a disconnection occurs).

Firewall

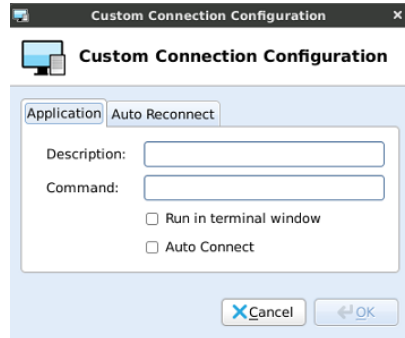
Use the *Firewall* tab to configure an alternate address for firewalls:

- **Automatically detect proxy** - Select to automatically detect the proxy type.
- **Use Alternate Address for Firewalls** - Select **Yes** to use an alternate address for firewalls.
- **Proxy Type** - Select a proxy type.
- **Proxy Address** and **Port** - If you select **Secure (HTTPS)** or **SOCKS** as the *Proxy Type*, you must enter the *Proxy Address* and *Port*.

TIP: Published applications do not support *Firewall* functions.

Custom

Use the **Custom Connection Configuration** dialog box (click **Custom**) to set custom connection configurations. After configuring, be sure to click **OK**.



Application

Use the *Application* tab to configure:

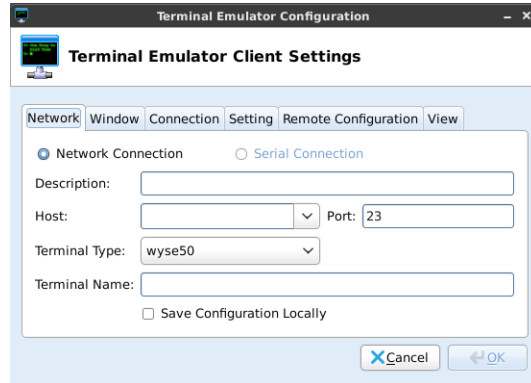
- **Description** - Enter the description.
- **Command Line** - Enter the command line for the program on the server.
- **Run in terminal window** - Runs the application in a terminal window (use with applications that require a terminal window such a console program).
- **Auto Connect** - Starts the connection automatically after system startup.

Auto Reconnect

Use the *Auto Reconnect* tab to enable automatic reconnect after a disconnection (select the **Enable Auto Reconnect** check box, and then select the amount of time to delay the reconnection attempt after a disconnection occurs).

Ericom PowerTerm® TEC

Use the **Terminal Emulator Configuration** dialog box (click **Ericom PowerTerm**) to set Ericom PowerTerm client connection configurations. After configuring, be sure to click **OK**.



Network

Use the *Network* tab to configure the network settings:

- **Network Connection** or **Serial Connection** - Select **Network Connection** for connections over TCP/IP, or **Serial Connection** for connections through a serial port.
- **Description** - Enter a description for the connection.
- **Host** - Enter a host name or IP Address (or select one from the list). Host can be populated from the global Ericom — PowerTerm® TEC connection application.
- **Port** - Enter the port of the host.
- **Terminal Type** - Select a terminal type.
- **Terminal Name** - Enter a name for the terminal.
- **Save Configuration Locally** - Saves the font, color, key-mapping and other settings of the Ericom — PowerTerm® TEC application locally.

Window

Use the *Window* tab to select the *Window Size* you want.

Connection

Use the *Connection* tab to configure the connection settings:

- **Auto Connect** - Starts the connection automatically after system startup.
- **Ping Before Connect** - Pings the connection to see if it is reachable before the connection is attempted.
- **Auto Reconnect** - Reconnects automatically after a disconnection occurs.
- **Delay before retrying** - Select the amount of time to delay the reconnection attempt after a disconnection occurs.

Setting

Use the *Setting* tab to automatically run script during user logon (enter the script name and path).

Remote Configuration

Use the *Remote Configuration* tab to configure:

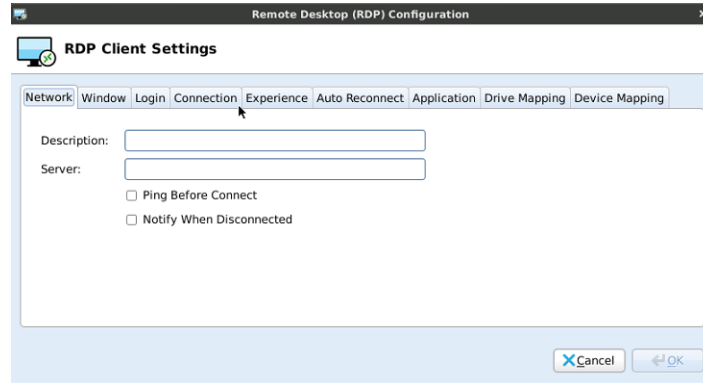
- **Remote Configuration Filename** - Enter the remote configuration filename for the connection.
- **Remote Configuration Path** - Enter the remote configuration path for the connection.

View

Use the *View* tab to select the items that will appear when using the connection (menu, toolbar, status bar, and buttons).

RDP

Use the **Remote Desktop Protocol (RDP) Client Settings** dialog box (click **RDP Settings**) to set RDP connection configurations. After configuring, be sure to click **OK**.



Network

Use the *Network* tab to configure the network settings:

- **Description** - Enter a name/label for the connection.
- **Server** - Enter a server name or IP address.
- **Ping Before Connect** - Pings the connection to see if it is reachable before the connection is attempted.
- **Notify When Disconnected** - Notifies you when the connection is broken.

Window

Use the *Window* tab to select the *Window Colors* and the *Window Size* you want, and to disable the panel (if you want the window to appear without the panel while using the connection).

Login

Use the *Login* tab to configure credentials used to automatically log in to the connection:

- **Use smart card** - Enables the use of a smart card when connecting.
- **Network Level Authentication** - Enables the use of Network Level Authentication (NLA) when connecting. Be sure to enable NLA if NLA is enabled on your remote computer (your remote computer requires NLA user authentication before you establish a full Remote Desktop connection and the logon screen appears).
- **Use RD Gateway settings** - Enables the use of Remote Desktop Gateway (RD Gateway) server when connecting. If required, then enter the IP address or URL of the RD Gateway server. You can also enable **Use Remote Desktop Credentials for RD Gateway** (if the server credentials are the same credentials as your **Remote Desktop Credentials** (*Host* remote computer credentials) in the *User Name*, *Password*, and *Domain* fields below) or disable **Use Remote Desktop Credentials for RD Gateway** and enter the *RD User Name*, *RD Password*, and *RD Domain* of the RD Gateway server if required.

NOTE: An RD Gateway server is a type of gateway that enables authorized users to connect to remote computers on a corporate network from any computer with an Internet connection. An RD Gateway server enables Remote Desktop connections to a corporate network from the Internet without having to set up virtual private network (VPN) connections. Ask your network administrator whether you need to specify an RD Gateway server.

- **User Name** - Enter a user name for the connection.
- **Password** - Enter the password.
- **Domain** - Enter the domain name.
- **Connect automatically after login** - Enables an automatic connection after successful login to the thin client.

TIP: The User Name, Password, and Domain fields are optional. If you leave any of these fields blank, interactive login is required (users must enter the information at login time).

Connection

Use the *Connection* tab to configure the connection settings:

- **Compression** - Enables compression.
- **NT4 compatible** - Enables RDP protocol version 4.
- **Low bandwidth** - Enables low-bandwidth optimization.
- **Sound** - Select audio source for the connection (**Local** or **Remote**).
- **Encryption Level** - Select an encryption level (**Normal** or **None**).

TIP: For servers with data encryption settings, you must select **Normal** for the encryption level.

Experience

Use the *Experience* tab to configure the experience settings for a user desktop:

- **Speed Level** - Select a speed level to describe the network connection.
- **Desktop Background** - Displays the desktop background.
- **Font Smoothing** - Enables font smoothing (smooth type).
- **Menu and window animation** - Enables menu and window animation.
- **RemoteFX** - Enables a RemoteFX session. To use an RDP USB redirection type you must use a RemoteFX session (RDP USB is not supported using a standard RDP session).
- **Show contents of window while dragging** - Shows the window content when the user drags the window on screen.
- **Subsampling** - Enables color space conversion required for chroma subsampling (the practice of encoding/compressing images for a higher transmission experience).

TIP: Consider your network restrictions when selecting options on the *Experience* tab. For example, be sure to configure appropriately for your bandwidth level and so on.

Auto Reconnect

Use the *Auto Reconnect* tab to enable automatic reconnect after a disconnection (select the **Enable Auto Reconnect** check box, and then select the amount of time to delay the reconnection attempt after a disconnection occurs).

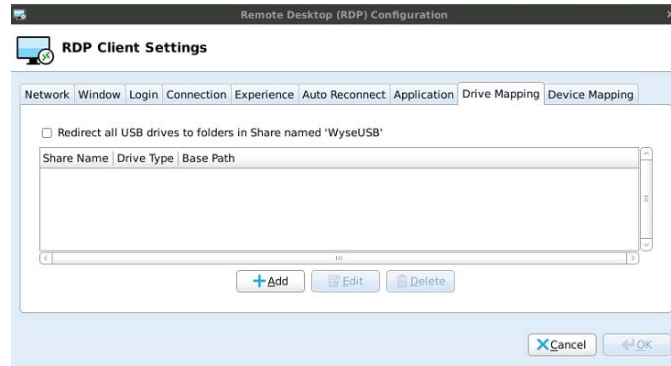
Application

Use the *Application* tab to enter the command line and Working Directory of the application that will run at the beginning of a session:

- **Command Line** - Enter the command line for the program on the server.
- **Working Directory** - Enter the working directory for the program.

Drive Mapping

Use the *Drive Mapping* tab to map share names on the server to USB mass storage devices attached to the thin client, and to view and manage (add, edit, and delete) the list of current server share names (including drive information) mapped on the thin client.



Adding Share Names

1. Click **Add** to open the **RDP Drive Map** dialog box.
2. Enter a *Share Name*.
3. Select a *Drive Type* (**USB Floppy**, **USB CDROM**, **USB Disk or Memory Stick**, or **Local or Mounted Disk**).
4. (Optional) Enter the directory on the USB device to access in the **Base Directory** text box.
5. Click **OK** to add the *Share Name* to the list of available *Share Names*.

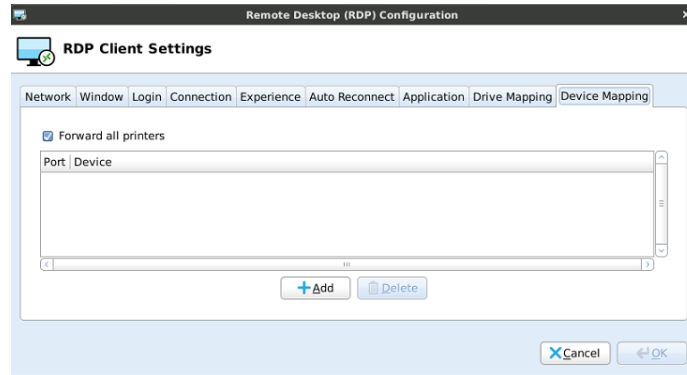
Editing and Deleting Share Names

To edit or delete a *Share Name*, select a *Share Name* from the list of available *Share Names* and do one of the following:

- **Edit** - Click **Edit** and configure the *Share Name* as described in "Adding Share Names."
- **Delete** - Click **Delete** to remove the *Share Name*.

Device Mapping

Use the *Device Mapping* tab to map devices to ports on the thin client, and to view and manage (add and delete) the list of current devices (including device information) mapped on the thin client.



Adding Devices

1. Click **Add** to open the **Add Port Mapping** dialog box.
2. Select a port from the *Port* list.
3. Select the directory of the device to access from the *Device* list.
4. Click **OK** to add the device to the list of available devices.

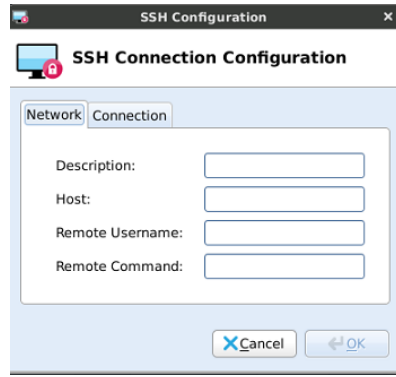
Deleting Devices

To delete a device, select a device from the list of available devices and click **Delete**.

SSH

Use the **SSH Configuration** dialog box (click **SSH**) to set SSH connection configurations. After configuring, be sure to click **OK**.

TIP: X forwarding/tunneling is automatic and allows you to execute remote X applications.



Network

Use the *Network* tab to configure the network settings:

- **Description** - Enter a name/label for the connection.
- **Host** - Enter a host name or IP address.
- **Remote Username** - Enter a username.
- **Remote Command** - Enter the command to execute on the server.

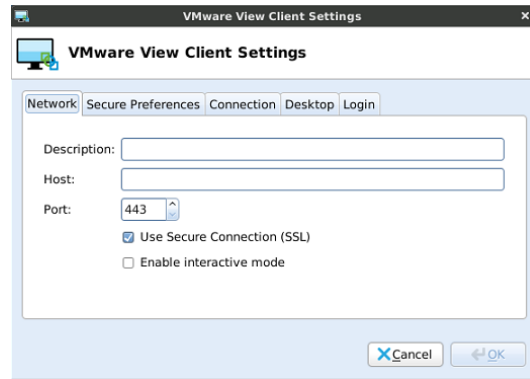
Connection

Use the *Connection* tab to configure the connection settings:

- **Auto Connect** - Starts the connection automatically after system startup.
- **Ping Before Connect** - Pings the connection to see if it is reachable before the connection is attempted.
- **Auto Reconnect** - Reconnects automatically after a disconnection occurs.
- **Delay before retrying** - Select the amount of time to delay the reconnection attempt after a disconnection occurs.

VMware View Client

Use the **VMware View Client Settings** dialog box (click **VMware View Client**) to set VMware View Client connection configurations. After configuring, be sure to click **OK**.



Network

Use the *Network* tab to configure the network settings:

- **Description** - Enter a name/label for the connection.
- **Host** - Enter the VMware View Server location (either host name, a full URL including the root path, or an IP Address).
- **Port** - Enter the port of the host.
- **Use Secure Connection (SSL)** - Select to use an SSL connection.
- **Enable interactive mode** - Enables interactive mode.

Secure Preferences

Use the *Secure Preferences* tab to select the option you want that determines how the client will proceed when it cannot verify that your connection to the server is secure.

CAUTION: It is not recommended that you change this setting unless instructed to do so by your system administrator.

Connection

Use the *Connection* tab to configure the connection settings:

- **Protocol** - Select a network protocol.
- **Disable 32 bit color on RDP** - You can select this check box if you selected RDP for the *Protocol*.
- **Ping Before Connect** - Pings the connection to see if it is reachable before the connection is attempted.
- **Connect automatically after login** - Enables an automatic connection after successful login to the thin client.
- **Auto Reconnect** - Reconnects automatically after a disconnection occurs.
- **Delay before retrying** - Select the amount of time to delay the reconnection attempt after a disconnection occurs.

Desktop

Use the *Desktop* tab to select whether to use full screen or a display size on all monitors, to disable the panel (if you want the window to appear without the panel while using the connection), to disable the menu bar on full screen, and to disable Exit on disconnect.

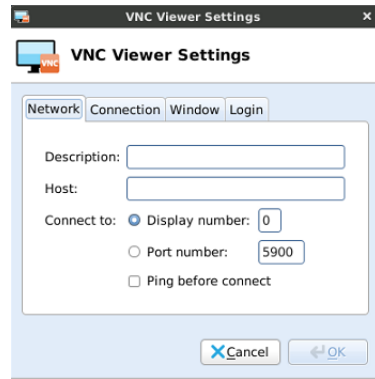
Login

Use the *Login* tab to configure credentials used to automatically log in to the connection:

- **User Name** - Enter a user name for the connection.
- **Password** - Enter the password.
- **Domain Name** - Enter the domain name.
- **Desktop** - Enter the desktop name.

VNC Viewer

Use the **VNC Viewer Settings** dialog box (click **VMware Viewer**) to set VNC Viewer connection configurations. After configuring, be sure to click **OK**.



Network

Use the *Network* tab to configure the network settings:

- **Description** - Enter a name/label for the connection.
- **Host** - Enter a host name or IP address.
- **Connect to** - Select a connection type of either **Display number** (enter the display to connect to on the server) or **Port number** (enter the port to connect to on the server).
- **Ping Before Connect** - Pings the connection to see if it is reachable before the connection is attempted.

Connection

Use the *Connection* tab to configure the connection settings:

- **Compression Level** - Select a compression level for encoding.
- **Shared** - Enables or disables a shared connection.
- **View Only** - Blocks mouse and keyboard events for a view-only connection.

Window

Use the *Window* tab to configure window settings:

- **Full Screen** - Opens the connection in a full-screen window.
- **Disable Panel** - Disables the panel while using the connection.
- **Color Depth** - Controls how many colors to display with each on-screen pixel.
- **JPEG Quality** - Specifies the image quality for encoding.

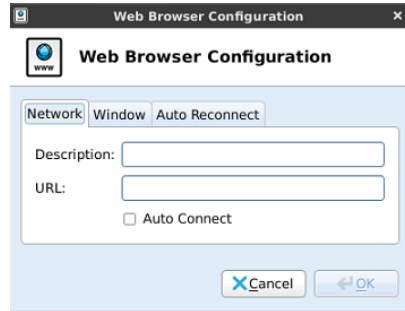
Login

Use the *Login* tab to configure credentials used to automatically log in to the VNC server:

- **Password** - Enter the password to connect to the VNC server.
- **Connect automatically after login** - Enables an automatic connection after successful login to the thin client.

Web Browser

Use the **Web Browser Configuration** dialog box (click **Web Browser**) to set Web Browser connection configurations. After configuring, be sure to click **OK**.



Network

Use the *Network* tab to configure the description and URL (optional if you want the browser to open to a particular Web page each time you connect). If you want the browser to launch automatically after system startup, select the **Auto Connect** check box.

Window

Use the *Window* tab to configure how the browser window is displayed. If you want the browser to appear in fullscreen mode without any menus or toolbars, select **Kiosk Mode**. If you want the browser to appear without the panel while using the connection, select **Disable Panel**. If you are not using Kiosk Mode, you can select the *Window Size* you want from the list.

Auto Reconnect

Use the *Auto Reconnect* tab to enable automatic reconnect after a disconnection (select the **Enable Auto Reconnect** check box, and then select the amount of time to delay the reconnection attempt after a disconnection occurs).



A

Central Configuration: Automating Configurations

This appendix describes how to set up your environment to provide your thin clients running Wyse Enhanced Ubuntu Linux with automatic configurations in three simple steps.

It includes:

- "How INI Files are Employed"
- "How to Set Up Automatic Configuration"

TIP: Wyse thin clients do *not* require device management software. They are configured to obtain their IP address, as well as the location of configuration instructions, from a DHCP server. However, you can use Wyse Device Manager (WDM) for a more hands-on management of your thin clients. For information about configuring your thin clients to communicate with a WDM server, see "WDM" and related INI parameters in *Reference Guide: Wyse[®] Enhanced Ubuntu[™] Linux INI Files*.

How INI Files are Employed

INI files (created and maintained by the administrator) determine how the thin client is configured. The thin client accesses INI files from the server during the initialization process. Typically, INI files are accessed through FTP, HTTP, and HTTPS; if no protocol is specified, the default is anonymous FTP.

INI files are employed as follows:

- **wlx.ini** - This is the global INI file. One wlx.ini file is available to all users. It contains global parameters for all thin clients accessing the server. If the operating system cannot find wlx.ini, it defaults to wnos.ini.
- **{username}.ini** - This file is unique to each user. The {username}.ini file contains the connection profile for each user. Parameters in the user profile generally supersede the identically named global parameters.
- **\$MAC.ini** - This file can be used for device-specific configuration. If the thin client locates this INI file (it is stored in the same directory as wlx.ini), wlx.ini is not accessed, unless you use the *include=wlx.ini* parameter.

When a thin client is initialized, it accesses the global wlx.ini file. When a user logs in, the thin client accesses the user's unique {username}.ini file. For detailed information on constructing and using Wyse Enhanced Ubuntu Linux INI files, refer to *Reference Guide: Wyse[®] Enhanced Ubuntu[™] Linux INI Files*.

TIP: If both PNLite and a user profile are being used, the username must be defined in the Windows domain to be used, and the password must be the same for the domain and the profile.

How to Set Up Automatic Configuration

For a Wyse thin client running Wyse Enhanced Ubuntu Linux to successfully access INI files and configure itself from a server, you must set up the server with the correct folder structure (where the INI files and other files are located), direct the thin client to the server, and then reboot or start the thin client.

After DHCP and servers are configured and available, the thin client checks (at each boot up) to see whether or not any configuration changes are available on a predefined server (**DCHP Option #161** specifies the server URL, **DCHP Option #162** specifies the root path to the server). If configuration changes are available, the changes are automatically installed.

Step 1: Prepare the Root Directory and Folder Structure on the Server

Set up the following folder structure on your server under the *C:/inetpub/ftproot* folder (for FTP) or *C:/inetpub/wwwroot* folder (for HTTP or HTTPS) and place your INI files and other necessary files inside the structure as noted (this list describes the folder structure, starting with the root directory).

<i>/wyse/</i>	The root directory. It stores the <i>wlx</i> folder and the <i>addons</i> folder.
<i>/wyse/wlx</i>	The main INI configuration folder. It stores the following: <ul style="list-style-type: none"> • <i>wlx.ini</i> file or <i>\$MAC.ini</i> file • <i>bitmap</i> folder • <i>certs</i> folder • <i>ini</i> folder
<i>/wyse/wlx/bitmap</i>	The folder where you can place custom images you plan to use.
<i>/wyse/wlx/certs</i>	The folder where you can place the CA certificates that can be imported to a thin client. Note: Use the <i>Certs</i> and <i>ImportCerts</i> INI parameters in the <i>wlx.ini</i> file to import the certificates to thin clients.
<i>/wyse/wlx/ini</i>	The folder where you can place the {username}.ini files.
<i>/wyse/addons</i>	The folder where you can place the add-ons you want to use. It also stores the directory file and the *.deb packages available to be installed on the thin client. The directory file should list all available add-ons. The directory file is required in the addons folder to guarantee that add-ons are properly located. NOTE: If you want to do an update with the <i>Preserve changes</i> option enabled, ensure that your addons folder includes a copy of your current add-ons. The system may require two reboots to fully update the add-ons while preserving local changes.

Be sure to create/activate the two required MIME Types (.ini and .) under IIS (on a per site basis) to enable downloading. Also be sure your Web server can identify the file types used by Wyse thin clients.

To create/activate the .ini MIME Type:

1. On your IIS server, use the **File Types** menu to add a *New Type*.
2. In the **File Type** dialog box, enter the *Associated extension* .ini and *Content type (MIME)* text/plain.
3. Click **OK** to apply the settings.

To create/activate the . MIME Type:

1. On your IIS server, use the **File Types** menu to add a *New Type*.
2. In the **File Type** dialog box, enter the *Associated extension* . and *Content type (MIME)* text/plain.
3. Click **OK** to apply the settings.

For detailed instructions on adding the .ini and . MIME Types, refer to Wyse Knowledge Base Solution #21581 (go to the Wyse Knowledge Base at <http://www.wyse.com/kb> and search for 21581).

Step 2: Direct the Thin Client to the Server

After you set up the folder structure and populate it with the correct files, you must then direct the thin client to the location of the server by one of the following ways:

- DHCP (see "Using DHCP")
- Manual direction (see "Manually Configuring the Server Location")

IMPORTANT: Using DHCP is *strongly recommended*.

Using DHCP

When using DHCP to direct the thin client to the location of the server (recommended), information about the server and root directory is obtained from the following DHCP options:

- **161** - The server.
- **162** - Root path to the server (ftp/http/https).
 - If no root path is defined, /wyse is assumed.
 - If a root path is defined, the additional path will be appended to the URL supplied by option 161.
- **184** - (Optional) Server username (to server specified in option 161).
- **185** - (Optional) Server password (to server specified in option 161).

TIP: Check-in for configuration changes is done early in the boot process. For that reason, changes in DHCP information may not be propagated to a unit until a full boot is completed. However, you can avoid this by forcing a renewing of the DHCP lease, which makes sure that the unit has the latest file-server location before the next check. Simply, right-click the **Network Manager** icon, click **Enable Networking** to disable it, right-click the **Wireless Manager** icon, and then click **Enable Networking** to enable it again (the DHCP lease is renewed).

TIP: For general instructions on adding **DHCP Options #161 and #162**, refer to Wyse Knowledge Base Solution #16132 (go to the Wyse Knowledge Base at <http://www.wyse.com/kb> and search for 16132).

Use the guidelines shown in Table 3 when creating and adding the DHCP options you need.

Table 3 DHCP Option Tags

Option	Description	Notes
1	Client identifier	Always sent.
2	Time Offset	Optional.
3	Router	Optional but recommended. It is not required unless the thin client must interact with servers on a different subnet.
6	Domain Name Server (DNS)	Optional but recommended.
12	Host Name/Terminal Name	Optional string. The host name or terminal name to be set.
15	Domain Name	Optional but recommended. See Option 6.
28	Broadcast Address	Optional.

Table 3 DHCP Option Tags, Continued

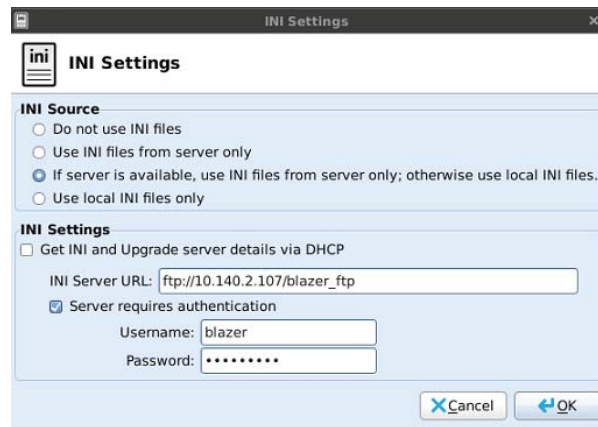
Option	Description	Notes
44	WINS servers IP Address	Optional.
51	Lease Time	Optional but recommended.
52	Option Overload	Optional.
53	DHCP Message Type	Recommended.
54	DHCP Server IP Address	Recommended.
55	Parameter Request List	Sent by appliance.
57	Maximum DHCP Message Size	Optional (always sent by thin client).
58	T1 (renew) Time	Optional but recommended.
59	T2 (rebind) Time	Optional but recommended.
61	Client identifier	Always sent.
161	Server (ftp/http/https)	Optional string. If this is an IP address or resolvable hostname, the protocol is assumed to be FTP; however, it may be the leading portion of a URL that specifies another protocol. If using the URL form, it should <i>not</i> include a trailing slash (for example, <code>http://server.example.com</code> or <code>ftp://192.168.0.1</code>).
162	Root path to the server (ftp/http/https)	Optional string. The relative directory starting from the root directory must be given. For example, on an FTP server, the full directory may be <code>C:/Inetpub/ftproot/wyse</code> , where <code>wyse</code> is the directory that contains the INI files. In this example, the correct string value for this DHCP option is <code>/wyse</code> . On a Linux server, an FTP user-based directory might be <code>/home/test/wyse</code> . In this example, if the FTP user is <code>test</code> , then the FTP root path is <code>/wyse</code> and not the full path (<code>/home/test/wyse</code>). This value should use URL path notation (start with a forward slash, <code>/</code> , and use a forward slash as folder separators).
181	Wyse PN Server	Optional string. IP address or FQDN of the PNLite server.
182	Wyse Admin List	Optional string. DHCP equivalent of the <code>DomainList</code> ini file parameter.
184	Server Username	Optional string. Username to use when authenticating to the server specified in Option 161.

Table 3 DHCP Option Tags, Continued

Option	Description	Notes
185	Server Password	Optional string. Password to use when authenticating to the server specified in Option 161.
186	Wyse Device Manager (WDM)	Optional binary IP address or FQDN of the WDM server. This option can specify up to one Wyse Device Manager server.

Manually Configuring the Server Location

To manually configure the server location (*not* recommended), open the **INI Settings** dialog box (click **System Settings** icon and then click **INI Settings**), and enter the URL (for HTTP or HTTPS; FTP URL is allowed for FTP) for the INI server in the **INI Server URL** text box. For more information, see "INI (Source) Settings."



Step 3: Reboot the Thin Client

After you reboot (or start the thin client), the thin client will look in the defined root path for the latest available configuration changes if necessary. Additionally, it will check the *directory* file in the *addons* folder to see if any changes for installed add-ons are defined. Add-ons that exist in the *addons* folder but are not listed in the *directory* file, will be ignored during check-in.

This page intentionally blank.

Administrators Guide

**Wyse[®] Enhanced Ubuntu Linux
Issue: 060413**

Written and published by:
Wyse Technology LLC, June 2013

Created using FrameMaker[®] and Acrobat[®]

Free Manuals Download Website

<http://myh66.com>

<http://usermanuals.us>

<http://www.somanuals.com>

<http://www.4manuals.cc>

<http://www.manual-lib.com>

<http://www.404manual.com>

<http://www.luxmanual.com>

<http://aubethermostatmanual.com>

Golf course search by state

<http://golfingnear.com>

Email search by domain

<http://emailbydomain.com>

Auto manuals search

<http://auto.somanuals.com>

TV manuals search

<http://tv.somanuals.com>