

# Nokia Bluetooth Headset BH-902 User Guide

---

9203798  
Issue 1 EN

## DECLARATION OF CONFORMITY

Hereby, NOKIA CORPORATION declares that this HS-76W product is in compliance with the essential requirements and other relevant provisions of Directive 1999/5/EC. A copy of the Declaration of Conformity can be found at [http://www.nokia.com/phones/declaration\\_of\\_conformity/](http://www.nokia.com/phones/declaration_of_conformity/).

# CE 0678

© 2007 Nokia. All rights reserved.

Reproduction, transfer, distribution or storage of part or all of the contents in this document in any form without the prior written permission of Nokia is prohibited.

Nokia and Nokia Connecting People are registered trademarks of Nokia Corporation. Other product and company names mentioned herein may be trademarks or tradenames of their respective owners.

Bluetooth is a registered trademark of Bluetooth SIG, Inc.

Nokia operates a policy of ongoing development. Nokia reserves the right to make changes and improvements to any of the products described in this document without prior notice.

Under no circumstances shall Nokia be responsible for any loss of data or income or any special, incidental, consequential or indirect damages howsoever caused.

The contents of this document are provided "as is". Except as required by applicable law, no warranties of any kind, either express or implied, including, but not limited to, the implied warranties of merchantability and fitness for a particular purpose, are made in relation to the accuracy, reliability or contents of this document. Nokia reserves the right to revise this document or withdraw it at any time without prior notice.

The availability of particular products may vary by region. Please check with the Nokia dealer nearest to you.

Unauthorized changes or modifications to this device may void the user's authority to operate the equipment.

#### Export Controls

This device may contain commodities, technology or software subject to export laws and regulations from the US and other countries. Diversion contrary to law is prohibited.

9203798 / Issue 1 EN

# Contents

---

<b>1. Introduction .....</b>	<b>6</b>
Bluetooth wireless technology.....	7
<b>2. Get started.....</b>	<b>9</b>
Overview .....	9
Chargers.....	10
Charge the battery.....	11
Switch on or off.....	12
Pair the headset.....	12
Disconnect the headset.....	14
Reconnect the headset.....	14
Display.....	15
<b>3. Basic use.....</b>	<b>17</b>
Place the headset over the ear.....	17
Carrying options .....	18
Call handling .....	19
Menu functions .....	21
Move within the menus .....	21
View recent calls .....	22
Manage paired devices.....	22
Change settings.....	23
Switch between connections.....	24
Clear settings or reset.....	25

## Contents

4. Battery information .....	26
Care and maintenance .....	28

# 1. Introduction

---

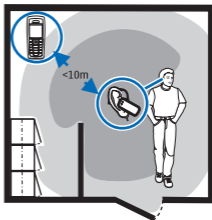
With the Nokia Bluetooth Headset BH-902 you can make and receive calls while on the move and use your mobile device hands free. You can use the headset with compatible devices that support Bluetooth wireless technology.

Read this user guide carefully before using the headset. Also read the user guide for your mobile device, which provides important safety and maintenance information. Keep the headset and its accessories out of reach of small children.

## ■ Bluetooth wireless technology

Bluetooth wireless technology allows you to connect compatible devices without cables. A Bluetooth connection does not require that the mobile device and the headset be in line of sight, but the maximum distance between the devices is 10 meters

(30 feet). The closer the mobile device and the headset are to each other, the better is the performance. The optimal operating range is shown in dark grey in the picture. The connection is subject to interference from distance and obstructions (shown in light grey) or other electronic devices.



The headset is compliant with the Bluetooth Specification 2.0 supporting the following profiles: Headset Profile 1.1, Hands-Free Profile 1.5, and Phone Book Access Profile

## I n t r o d u c t i o n

(PBAP) 1.0. Check with the manufacturers of other devices to determine their compatibility with this device.

There may be restrictions on using Bluetooth technology in some locations. Check with your local authorities or service provider.

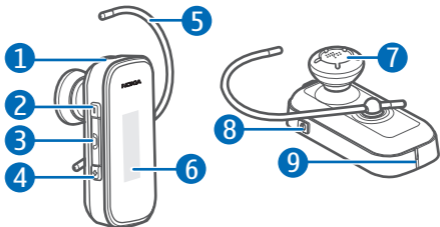


## 2. Get started

---

### ■ Overview

The headset contains the following parts: charger connector (1), volume down key (2), answer/end key (3), volume up key (4), earloop (5), display (6), earpiece (7), power key (8), and microphone (9).



Before you can start using the headset, you must charge the battery and pair the headset with a compatible device.

## Get started

Parts of the headset are magnetic. Metallic materials may be attracted to the headset. Do not place credit cards or other magnetic storage media near the headset, because information stored on them may be erased.

### ■ Chargers

Check the model number of any charger before using it with this headset. The headset is intended for use with the AC-3, AC-4, AC-5, and DC-4 chargers.



**Warning:** Use only chargers approved by Nokia for use with this particular enhancement. The use of any other types may invalidate any approval or warranty and may be dangerous.


When you disconnect the power cord of any enhancement, grasp and pull the plug, not the cord.

## ■ Charge the battery

The headset has an internal, nonremovable, rechargeable battery. Do not attempt to remove the battery from the headset, as you may damage the headset.

1. Connect the charger to a wall outlet.
2. Connect the charger cable to the charger connector on the headset. When the charging starts, *Charging* is briefly displayed on the headset. During charging, a battery animation is displayed.

It may take a while before charging starts. If charging does not start, disconnect the charger, plug it in again, and retry. Charging the battery fully may take up to 2 hours.

3. When the battery is fully charged, *Battery full* and  are displayed. Disconnect the charger from the headset and the wall outlet.

The fully charged battery has power for up to 8 hours of talk time or up to 110 hours of standby time. However, the talk and standby times may vary with different compatible

## Get started

Bluetooth devices, usage settings, usage styles, and environments.

When battery power falls low, the headset beeps about every 5 minutes, and *Battery low* is displayed. Recharge the battery.

### ■ Switch on or off

To switch on, press and hold the power key until the headset beeps and the Nokia logo is displayed. If the headset has been paired with a device, it tries to connect to it. If the headset has not been paired with a device, it enters the pairing mode (see "Pair the headset," p. 12).

To switch off, press and hold the power key until *Switching off* is displayed. If the headset is not connected to a paired device within about 30 minutes, it switches off automatically.

### ■ Pair the headset

1. Ensure that your mobile device is switched on.

2. If the headset has not been previously paired with a device, switch on the headset. The headset enters the pairing mode.

If the headset has been previously paired with another device, switch off the headset, and press and hold the power key until text about pairing is displayed. You can also start pairing using the *Pairing* function described in "Menu functions," p. 21.

(To cancel pairing, press the answer/end key.)

3. Activate the Bluetooth feature on the mobile device, and set the device to search for Bluetooth devices.
4. Select the headset (Nokia BH-902) from the list of found devices on your device.
5. Enter the passcode 0000 to pair and connect the headset to your device. In some devices you may need to make the connection separately after pairing. You only need to pair the headset with your device once.

If pairing is successful, *Pairing OK* is displayed, and the headset appears in the menu of the mobile device where you can view the currently paired Bluetooth devices.

## Disconnect the headset

To disconnect the headset from your mobile device, use the *Connection > Device list* function described in "Menu functions," p. 21. Alternatively, switch off the headset, or disconnect it in the Bluetooth menu of your device.

You do not need to delete pairing with the headset to disconnect it.

## Reconnect the headset

To manually connect the headset to your paired device, switch on the headset, and make the connection in the Bluetooth menu of the device, or press and hold the answer/end key.

In your device, you may be able to allow the headset to connect to it automatically when the headset is switched on. To do this in Nokia devices, change your paired device settings in the Bluetooth menu.

## ■ Display

When the headset is on and it is not used for about 10 seconds, the display enters the power saving mode. In this mode the display turns off for about 5 seconds and turns on for about 1 second at regular intervals.

To activate the display when it is in the power saving mode, briefly press the answer/end key or either volume key; to display the list of menus, press the power key.

To view the current time and battery status when you are not in a menu or in a call, press either volume key.

The essential display indicators are the following:



The headset is connected to a compatible device and ready for use.



The headset is not connected to a compatible device.



There is an incoming call.



A call is in progress.

## Get started



A call is active and another call is on hold.



You have missed calls.



The microphone is muted (during a call).



There are unread text or multimedia messages in your mobile device. The icon is shown only when the headset is connected to a compatible Nokia device.



The battery is fully charged.



The battery charge is low.



You have hidden the caller information.



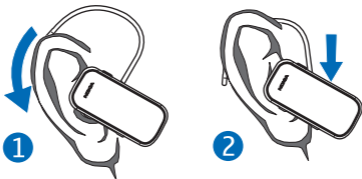
### 3. Basic use

---

#### ■ Place the headset over the ear

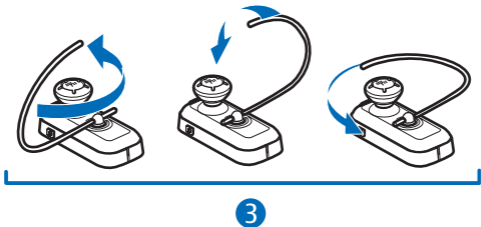
The headset is provided with an earloop that you can use for a better fit on your ear.

Peel off the protective sheet from the earpiece. To use the headset with the earloop, slide the earloop over your ear (1), and gently plug the earpiece into your ear. Push or pull the earloop to set its length. Set the headset so that it points toward your mouth (2).



## Basic use

To use the headset on the left ear, rotate the earloop so that the loop is to the left of the Nokia logo (3).



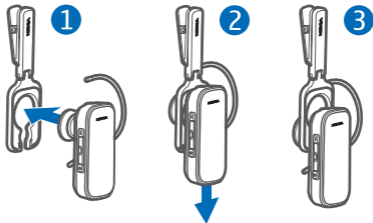
To use the headset without the earloop, detach the earloop by gently pulling it from the small opening at the back of the headset, and plug the headset into your ear. To attach the earloop, carefully insert it into the opening.

## ■ Carrying options

The headset may be supplied with a clip or a strap.

When you do not keep the headset on your ear, you can attach it to your clothing or belt using the clip or carry it on the strap around your neck.

To fix the headset to the clip or strap, insert the headset into the catch (1), and gently push it downwards (2) until it locks into place (3). To detach the headset, slide it out through the catch.



## ■ Call handling

To make a call, use your mobile device in the normal way when the headset is connected to the device.

## Basic use

If your device supports last number redialing with the headset, press the answer/end key twice while no call is in progress.

If your device supports voice dialing with the headset, press and hold the answer/end key when no call is in progress, and proceed as described in the user guide for your device.

To answer or end a call, press the answer/end key. To reject an incoming call, press the answer/end key twice.

To adjust the headset volume, press either volume key during a call.

To mute or unmute the microphone, briefly press the power key during a call. The headset beeps.

To switch the call from the headset to a connected device, press and hold the power key (the headset switches off), or use the keys of your device. To switch the call back to the headset, switch on the headset, or press and hold the answer/end key (when the headset is on).

To answer a waiting call and put the current call on hold, press and hold the answer/end key. To answer a waiting call and end the current call, press the answer/end key. To

switch between the active call and the call on hold, press and hold the answer/end key. To end the active call and make the call on hold active, press the answer/end key.

## ■ Menu functions

The headset has a menu facility where you can view recent calls, manage the paired devices, and change the headset settings.

### Move within the menus

To access the list of menu functions, briefly press the power key while no call is in progress. The first menu (*Recent calls*) is displayed.

To scroll through the menu functions or setting options, press either volume key. To select a menu function or a setting option, press the answer/end key.

To return to the previous menu level, press the power key. To exit the list of menu functions, press the power key once or

## Basic use

several times depending on the current menu level; or wait until the display turns off to save power.

### View recent calls

To view recent calls, select *Recent calls* and the desired submenu. You can view the 10 most recent dialed, received, and missed calls. When you connect the headset to your mobile device, the call information is copied from the device to the headset if the device supports this feature.

To call a number, scroll to it, and press the answer/end key.

### Manage paired devices

To manage the Bluetooth devices paired with the headset, select *Connection*.

To pair the headset with a compatible device, select *Pairing*. When *Start pairing?* is displayed, press the answer/end key, and proceed as instructed in "Pair the headset," p. 12. If you start pairing while the headset is connected to a device, the connection is ended.

To view the currently paired devices, select *Device list*. The currently connected device is indicated by a filled circle, and the device that is not connected to the headset is indicated by an empty circle. To connect the headset to a device or disconnect the headset from it, scroll to the device, and press the answer/end key.

## Change settings

To change headset settings, select *Setup*.

To show or hide the caller information, select *Caller ID setup* and the desired option. To view the caller information when *Caller hidden* is selected, briefly press either volume key when you receive a call.

To set the time format and the current time, select *Time setup*. To select the time format, press either volume key and the answer/end key. To set the hours or minutes, press either volume key repeatedly (or press and hold the key), and press the answer/end key. The time is updated from the connected Nokia device if the device provides the time.

## Basic use

To select the language for the texts shown on the headset display, select *Language*. Scroll to the desired language, and press the answer/end key twice. The language is updated from the connected Nokia device if the device provides the language setting.

To set the display brightness, select *Brightness*. Scroll to the desired level, and press the answer/end key.

To restore the original settings, select *Reset*, and press the answer/end key to confirm the operation. See also "Clear settings or reset," p. 25.

## ■ Switch between connections

If the headset has been paired with two compatible devices (for example, a PC and mobile device), you can switch the connection between them. Ensure the other device is available for connection, and press and hold both volume keys at the same time.



## ■ Clear settings or reset

To restore the original settings of the headset, use the *Setup* > *Reset* function described in "Menu functions," p. 21. Alternatively, switch off the headset, press and hold the power key and answer/end key, and press the answer/end key to confirm the operation.

To reset the headset if it stops functioning, although it is charged, plug the headset into a charger, and press the power key and the answer/end key at the same time. The reset does not clear the pairing settings.

## 4. Battery information

---

Your device is powered by a rechargeable battery. The battery can be charged and discharged hundreds of times, but it will eventually wear out. Recharge your battery only with Nokia approved chargers designated for this device.

Unplug the charger from the electrical plug and the device when not in use. Do not leave a fully charged battery connected to a charger, since overcharging may shorten its lifetime. If left unused, a fully charged battery will lose its charge over time.

Never use any charger that is damaged.

Leaving the device in hot or cold places, such as in a closed car in summer or winter conditions, will reduce the capacity and lifetime of the battery. Always try to keep the battery between 15°C and 25°C (59°F and 77°F). A device with a hot or cold battery may not work temporarily, even when the battery is fully charged. Battery performance is particularly limited in temperatures well below freezing.

## Battery information

Do not dispose of batteries in a fire as they may explode.  
Batteries may also explode if damaged.

## Care and maintenance

---

Your device is a product of superior design and craftsmanship and should be treated with care. The following suggestions will help you protect your warranty coverage.

- Keep the device dry. Precipitation, humidity, and all types of liquids or moisture can contain minerals that will corrode electronic circuits. If your device does get wet, allow it to dry completely.
- Do not use or store the device in dusty, dirty areas. Its moving parts and electronic components can be damaged.
- Do not store the device in hot areas. High temperatures can shorten the life of electronic devices, damage batteries, and warp or melt certain plastics.
- Do not store the device in cold areas. When the device returns to its normal temperature, moisture can form inside the device and damage electronic circuit boards.

## Care and maintenance

- Do not attempt to open the device.
- Do not drop, knock, or shake the device. Rough handling can break internal circuit boards and fine mechanics.
- Do not use harsh chemicals, cleaning solvents, or strong detergents to clean the device.
- Do not paint the device. Paint can clog the moving parts and prevent proper operation.

All of the above suggestions apply equally to your device, battery, charger, or any enhancement. If any device is not working properly, take it to the nearest authorized service facility for service.



### Disposal

The crossed-out wheeled-bin symbol on your product, literature, or packaging reminds you that in the European Union all electrical and electronic products, batteries, and accumulators must be taken to separate collection at the end of their working life. Do not dispose of these products as unsorted municipal waste. Return the products to collection to prevent possible harm to the environment or human health from uncontrolled

## Care and maintenance

waste disposal and to promote the sustainable reuse of material resources. Collection information is available from the product retailer, local waste authorities, national producer responsibility organizations, or your local Nokia representative. For more information, see product Eco-Declaration or country-specific information at [www.nokia.com](http://www.nokia.com).

## Free Manuals Download Website

<http://myh66.com>

<http://usermanuals.us>

<http://www.somanuals.com>

<http://www.4manuals.cc>

<http://www.manual-lib.com>

<http://www.404manual.com>

<http://www.luxmanual.com>

<http://aubethermostatmanual.com>

Golf course search by state

<http://golfingnear.com>

Email search by domain

<http://emailbydomain.com>

Auto manuals search

<http://auto.somanuals.com>

TV manuals search

<http://tv.somanuals.com>