

Troubleshooting

I pressed the file transfer button but nothing happens. What should I do?

Make sure your digital camera is on when you press the file transfer button.

The file transfer seems to take forever. Why?

Depending on the size of the media and your digital camera speed, the file transfer can take up to several minutes depending on how much data you are transferring to the iPod. If it seems like it is taking longer than usual, disconnect and reconnect the Unit to the iPod and retransmit again.

I started the file transfer but it doesn't finish. What should I do?

Check your iPod and camera battery power. If you have a large file transfer and either your iPod battery or your digital camera battery is low, your files may not be able to completely transfer. A fully charged iPod and camera is recommended when performing a large file archive.

I hit the transfer button but it doesn't transfer anything. Why not?

Your digital camera may not be compatible with the Unit. Some older digital cameras do not use the DCIM format when they store the digital picture either internally or on a removable media card. If that's the case, you may need to connect your digital camera to your computer and install the necessary drivers to retrieve your files from the digital camera.

The transfer is incomplete. Why did some files not make it to my iPod?

There are some digital cameras that store movie files or TIFF files in directories other than the DCIM directory; some use a different folder-naming convention that is not recognized by the DCIM format. If that's the case, you may need to connect your digital camera to your computer and retrieve your files from the digital camera through your computer.

FCC Statement

DECLARATION OF CONFORMITY WITH FCC RULES FOR ELECTROMAGNETIC COMPATIBILITY

We, Belkin Corporation, of 501 West Walnut Street, Compton, CA 90220, declare under our sole responsibility that the product:

F8E477

to which this declaration relates:

Complies with Part 15 of the FCC Rules. Operation is subject to the following two conditions: (1) this device may not cause harmful interference, and (2) this device must accept any interference received, including interference that may cause undesired operation.

CE Declaration of Conformity

We, Belkin Corporation, declare under our sole responsibility that the product F8E477, to which this declaration relates, is in conformity with Emissions Standard EN55022 and with Immunity Standard EN55024, LVP EN61000-3-2, and EN61000-3-3.

ICES

This Class B digital apparatus complies with Canadian ICES-003. Cet appareil numérique de la classe B est conforme à la norme NMB-003 du Canada.



Belkin Corporation Limited 3-Year Product Warranty

Belkin Corporation warrants this product against defects in materials and workmanship for three years. If a defect is discovered, Belkin will, at its option, repair or replace the product at no charge provided it is returned during the warranty period, with transportation charges prepaid, to the authorized Belkin dealer from whom you purchased the product. Proof of purchase may be required. This warranty does not apply if the product has been damaged by accident, abuse, misuse, or misapplication; if the product has been modified without the written permission of Belkin; or if any Belkin serial number has been removed or defaced.

THE WARRANTY AND REMEDIES SET FORTH ABOVE ARE EXCLUSIVE IN LIEU OF ALL OTHERS, WHETHER ORAL OR WRITTEN, EXPRESSED OR IMPLIED. BELKIN SPECIFICALLY DISCLAIMS ANY AND ALL IMPLIED WARRANTIES, INCLUDING, WITHOUT LIMITATION, WARRANTIES OF MERCHANTABILITY AND FITNESS FOR A PARTICULAR PURPOSE.

No Belkin dealer, agent, or employee is authorized to make any modification, extension, or addition to this warranty.

BELKIN IS NOT RESPONSIBLE FOR SPECIAL, INCIDENTAL, OR CONSEQUENTIAL DAMAGES RESULTING FROM ANY BREACH OF WARRANTY, OR ANY OTHER LEGAL THEORY, INCLUDING BUT NOT LIMITED TO, LOST PROFITS, DOWNTIME, GOODWILL, DAMAGE TO OR REPROGRAMMING OR REPRODUCING, ANY PROGRAM OR DATA STORED IN OR USED WITH BELKIN PRODUCTS.

Some states do not allow the exclusion or limitation of incidental or consequential damages or exclusion of implied warranties, so the above limitations or exclusions may not apply to you. This warranty gives you specific legal rights, and you may also have other rights that vary from state to state.



Belkin Corporation
501 West Walnut Street
Compton • CA • 90220 • USA
Tel: 310.898.1100
Fax: 310.898.1111

Belkin Components, Ltd.
Express Business Park • Shipton Way
Rushden • NN10 6GL • United Kingdom
Tel: +44 (0) 1933 35 2000
Fax: +44 (0) 1933 31 2000

Belkin Components B.V.
Starparc Building • Boeing Avenue 333
1119 PH Schiphol-Rijk • The Netherlands
Tel: +31 (0) 20 654 7300
Fax: +31 (0) 20 654 7349

Belkin, Ltd.
7 Bowen Crescent • West Gosford
NSW 2250 • Australia
Tel: +61 (0) 2 4372 8600
Fax: +61 (0) 2 4372 8603

Tech Support
US: 310.898.1100 ext. 2263
800.223.5546 ext. 2263
Europe: 00 800 223 55 460
Australia: 1800 666 040

© 2004 Belkin Corporation. All rights reserved. All trade names are registered trademarks of respective manufacturers listed. Macintosh is a trademark of Apple Computer, Inc., registered in the U.S. and other countries. iPod and iPhoto are trademarks of Apple Computer, Inc.

P74455



Digital Camera Link

Store thousands of digital photos on your iPod™



User Guide
F8E477

Setup Instructions

1. Power on the iPod.
2. Connect the Digital Camera Link (the Unit) to the iPod. The Unit will turn on automatically. After a few seconds, the LED will turn green to indicate proper connection. See below LED chart for further LED interpretation.
3. Connect your digital camera to the Unit.
4. Press the button once on the Unit to initiate file archive.
5. After transfer is complete* (see LED chart below), the user has three options:
 - a) Press the button again to begin the data verification process; or
 - b) Disconnect the Unit from the iPod; or
 - c) Manually check the iPod for complete file transfer. Once the "OK to disconnect" or the "Main Menu" screen appears after transfer is complete, select "Extras > Photo Import" and select the roll number for verification. Photos are listed on the iPod by roll number in the "Photo Import" folder.
6. The Unit will power off immediately after disconnecting the Unit from the iPod.








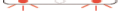
*You CANNOT view the photos on the iPod.

NOTE: Disconnect the Unit when not in use to preserve battery life. Belkin recommends use of high-quality alkaline batteries. Battery life depends greatly on the type of media being used and the type of battery being used; however, a single set of high-quality alkaline batteries should allow transfer of 24 or more typical 128MB CompactFlash® cards (3GB or more of data).

NOTE: Do not disconnect the Unit from the iPod while files are being transferred. The message "Do Not Disconnect" will appear on your iPod during the archive and data verification process. It is safe to disconnect your Unit from the iPod when the message "OK to Disconnect" or "Main Menu" is displayed on your iPod or after the media transfer is complete.

User Interface and General Operation:

LED chart

- | | |
|--|---|
|  | Dark - Power is off (not connected to iPod) |
|  | Solid Green (center LED) - Connected to the iPod (2–3 second recognition period) |
|  | Solid Red (center LED) - Power is on but battery power is low |
|  | Running Green - Transfer button has been pressed and stays on throughout transfer process |
|  | Solid Green (all 3 LEDs) - Transfer or verification complete |
|  | Running Amber – Verification process |
|  | Flashing Red (outside LEDs) - Incompatible source device, unable to transfer from camera (5–10 second recognition period) |
|  | Flashing Red (center LED) - Cannot write to iPod (e.g. disk full) |

NOTE: After a file transfer is complete, disconnect the Unit from both the camera and the iPod. Reconnect the iPod to the Unit to reestablish the "ready" state. The Unit is now ready to connect to a camera for another file transfer.

NOTE: The Unit will perform transfers when battery status is low, however, we strongly suggest that you verify file transfers performed in this condition. Should the transfer fail, insert new batteries and repeat the transfer procedure.

Transferring photos using iPhoto™:

Connect the iPod to your computer. If you are using a Macintosh® computer, iPhoto will automatically detect photos on the iPod and iPhoto will open.

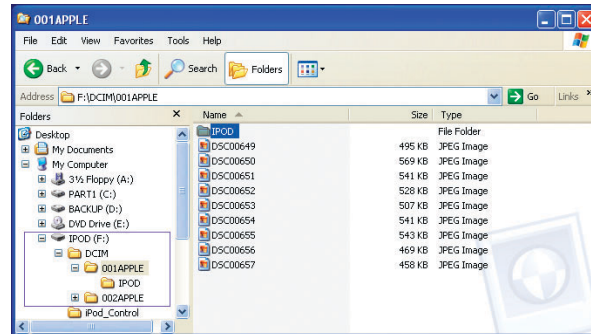
Transferring photos using the iPod as a disk drive:

Connect the iPod to your computer. Through the My Computer menu, double-click the removable drive that represents the iPod. Double-click on the DCIM folder. Each folder (XXXAPPLE) represents a specific import. Double-click on a folder to view the images. You can also transfer images to your computer by opening this folder and dragging them to the desktop.

NOTE: While the iPod is connected to your computer, you can erase the images from the DCIM folder on your computer and the images will be deleted from the iPod once disconnected.

Folder Structure on iPod

The images are stored as "Rolls" in the DCIM directory. Each "Roll" is indicated by a folder containing the individual photos.



iPod

- DCIM ("Digital Camera Images" folder)
- 001APPLE (Photo Roll folder: each roll is in a separate folder, — "001APPLE", "002APPLE", etc.)
- xxxxxxxx.jpg (individual photo files)

To erase photos from the iPod:

1. Disconnect the Unit from the iPod.
2. Select "Extras > Photo Import" and select the roll number you would like to delete. Then select "Delete Roll > Delete".

Specifications

- Archives up to 2,000 files in one session. Copies ALL camera file types (e.g. JPEGs, AVIs, MPGs, etc.)
- Transfers over USB at 0.8 to 1Mbps, depending on the maximum speed capacity of the attached USB device (camera)
- Supports both FAT32 and HPFS iPod formats

Compatibility Chart

Compatible with Apple® 3G iPod players—10, 15, 20, 30, and 40GB models.

Digital cameras supported will be those using either the PIMA 15740 PTP protocol or the FAT 12/16/32 mass storage format. These devices must also use either Bulk Only or Control/Bulk or Control/Bulk/Interrupt USB protocols.

Supported Cameras

Manufacturer	Camera Name
Canon®	IXUS V3
Canon	S45
Fuji®	FinePix F401
Jenoptik	JD C2.1 LCD
Kodak®	DX3500
Kodak	DX4900
Konica®	KD100
Minolta®	F200
Nikon®	CoolPix E775
Nikon	CoolPix 5700
Nikon	CoolPix 775
Olympus®	Camedia C-2
Olympus	C350
Olympus	Camedia C-750
Packard Bell®	DSC200
Panasonic	Lumix™ LC33
Ricoh®	Caplio RR230
Sony®	Cyber-shot® DSC-P2
Sony	Cyber-shot DSC-P72
Sony	Cyber-shot DSC-P71
Sony	Cyber-shot U30

NOTE: Above list is for reference only. Other cameras may be added. This list does not represent the entire range of compatible cameras.

The Unit is not recommended for use with a media reader, which would cause significant battery drain. Does not work with Microdrive-type media.

Free Manuals Download Website

<http://myh66.com>

<http://usermanuals.us>

<http://www.somanuals.com>

<http://www.4manuals.cc>

<http://www.manual-lib.com>

<http://www.404manual.com>

<http://www.luxmanual.com>

<http://aubethermostatmanual.com>

Golf course search by state

<http://golfingnear.com>

Email search by domain

<http://emailbydomain.com>

Auto manuals search

<http://auto.somanuals.com>

TV manuals search

<http://tv.somanuals.com>