

# BELKIN®

[www.belkin.com](http://www.belkin.com)

## **Belkin Tech Support**

US: 310-898-1100, ext. 2263

800-223-5546, ext. 2263

UK: 0845 607 77 87

Australia: 1800 235 546

New Zealand: 0800 235 546

Europe: [www.belkin.com/support](http://www.belkin.com/support)

## **Belkin Corporation**

501 West Walnut Street  
Los Angeles, CA 90220, USA  
310-898-1100  
310-898-1111 fax

## **Belkin Ltd.**

Express Business Park, Shipton Way  
Rushden, NN10 6GL, United Kingdom  
+44 (0) 1933 35 2000  
+44 (0) 1933 31 2000 fax

## **Belkin B.V.**

Boeing Avenue 333  
1119 PH Schiphol-Rijk, The Netherlands  
+31 (0) 20 654 7300  
+31 (0) 20 654 7349 fax

## **Belkin Ltd.**

4 Pioneer Avenue  
Tuggerah Business Park  
Tuggerah, NSW 2259, Australia  
+61 (0) 2 4350 4600  
+61 (0) 2 4350 4700 fax

© 2006 Belkin Corporation. All rights reserved. All trade names are registered trademarks of respective manufacturers listed. The XM logo is a trademark or registered trademark of XM Satellite Radio.

**BELKIN®**



**Universal Remote for XM  
User Manual**

## **Introduction**

---

Congratulations and thank you for purchasing the Belkin Universal Remote for XM. The Belkin Universal Remote integrates universal, XM receiver functionalities and ergonomic fit in this sleek unit. It's perfect as a replacement or an extra remote for the car and home.

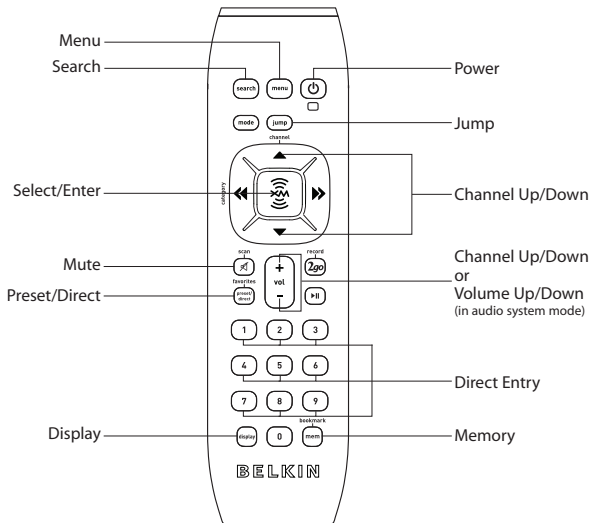
## **Using the Universal Remote for XM**

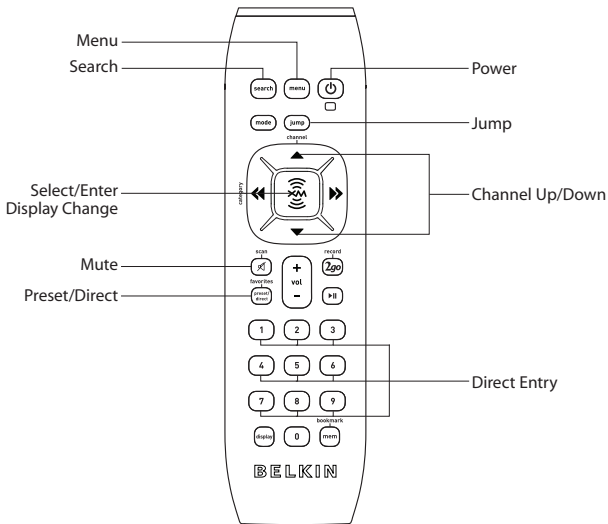
---

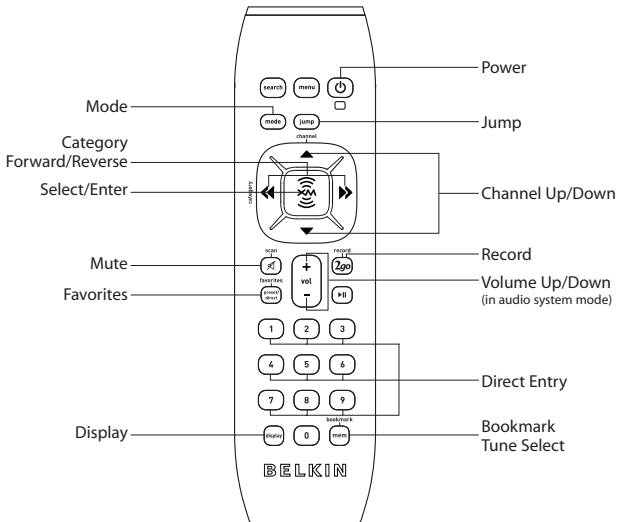
The Universal Remote for XM is compatible with all XM receivers. Functions on the keypad will vary depending on the model of XM receiver you own. Please turn to the page that corresponds to your type of XM receiver.

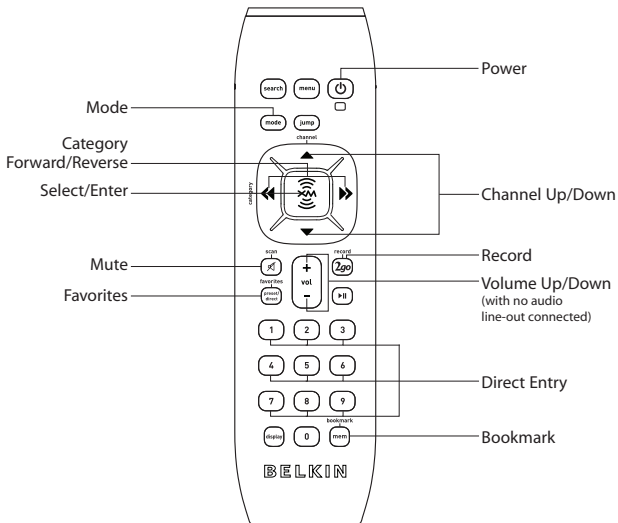
**Delphi RodyXT<sup>®</sup>**  
**Audiovox<sup>®</sup> Xpress<sup>™</sup>**

---





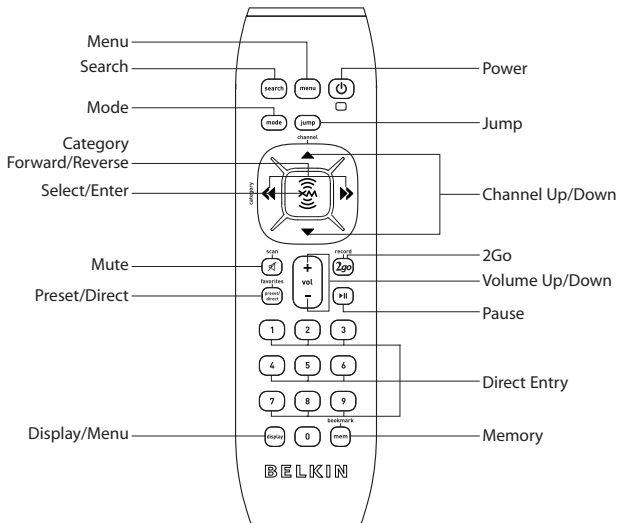






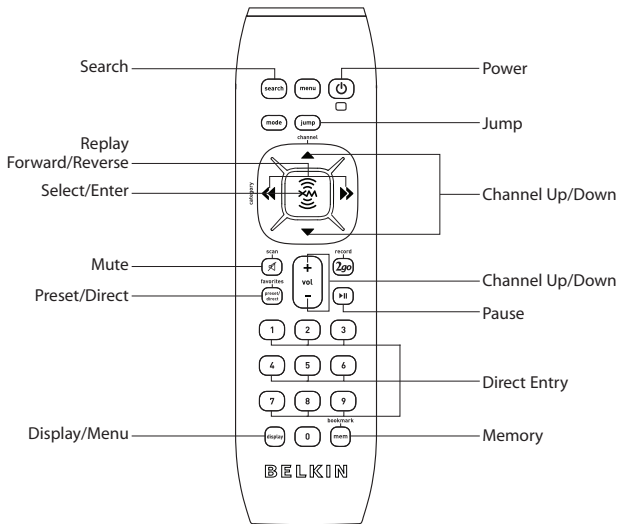
# Delphi MyFi™ Tao XM2go™

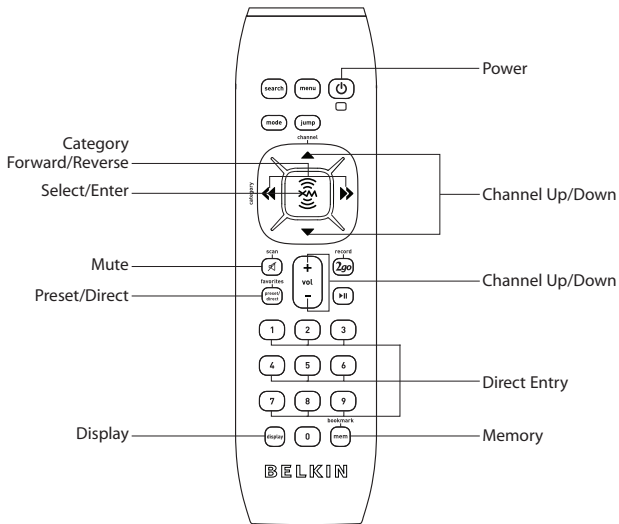
---



# Delphi SKYFi2®

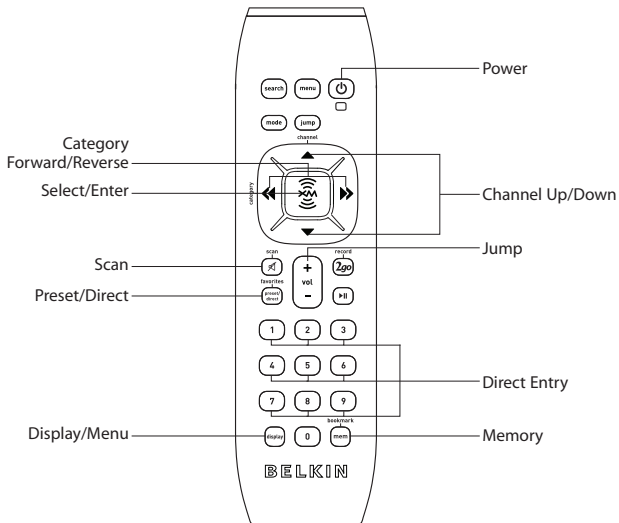
---





# XM Commander Delphi Roady®

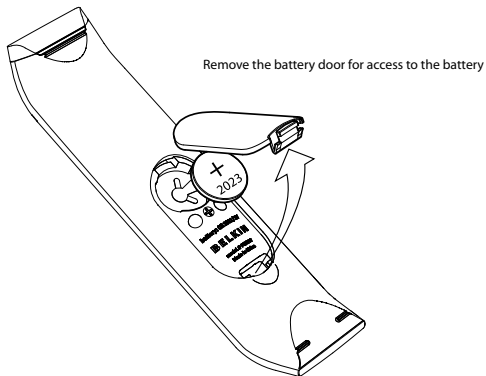
---



## Replacing the Battery in the Universal Remote for XM

---

The Universal Remote comes with a user-replaceable battery preinstalled. The LED indicator on the Remote lights green every time a button is pressed, indicating the battery still has a charge. When the LED indicator no longer lights at the push of the button, it is time to replace the battery. Simply turn the Remote over and open the battery door to access the battery compartment. Replace the battery with the equivalent size and voltage battery (CR2032), making sure the positive side faces up.



## **Belkin Corporation Limited 3-Year Product Warranty**

---

### **What this warranty covers.**

Belkin Corporation warrants to the original purchaser of this Belkin product that the product shall be free of defects in design, assembly, material, or workmanship.

### **What the period of coverage is.**

Belkin Corporation warrants the Belkin product for three years.

### **What will we do to correct problems?**

#### *Product Warranty.*

Belkin will repair or replace, at its option, any defective product free of charge (except for shipping charges for the product).

### **What is not covered by this warranty?**

All above warranties are null and void if the Belkin product is not provided to Belkin Corporation for inspection upon Belkin's request at the sole expense of the purchaser, or if Belkin Corporation determines that the Belkin product has been improperly installed, altered in any way, or tampered with. The Belkin Product Warranty does not protect against acts of God (other than lightning) such as flood, earthquake, war, vandalism, theft, normal-use wear and tear, erosion, depletion, obsolescence, abuse, damage due to low voltage disturbances (i.e. brownouts or sags), non-authorized program, or system equipment modification or alteration.

This warranty does not cover batteries or the replacement of batteries.

## **Belkin Corporation Limited 3-Year Product Warranty**

---

### **How to get service.**

To get service for your Belkin product you must take the following steps:

1. Contact Belkin Corporation at 501 W. Walnut St., Compton CA 90220, Attn: Customer Service, or call (800)-223-5546, within 15 days of the Occurrence. Be prepared to provide the following information:
  - a. The part number of the Belkin product.
  - b. Where you purchased the product.
  - c. When you purchased the product.
  - d. Copy of original receipt.
2. Your Belkin Customer Service Representative will then instruct you on how to forward your receipt and Belkin product and how to proceed with your claim.

Belkin Corporation reserves the right to review the damaged Belkin product. All costs of shipping the Belkin product to Belkin Corporation for inspection shall be borne solely by the purchaser. If Belkin determines, in its sole discretion, that it is impractical to ship the damaged equipment to Belkin Corporation, Belkin may designate, in its sole discretion, an equipment repair facility to inspect and estimate the cost to repair such equipment. The cost, if any, of shipping the equipment to and from such repair facility and of such estimate shall be borne solely by the purchaser. Damaged equipment must remain available for inspection until the claim is finalized. Whenever claims are settled, Belkin Corporation reserves the right to be subrogated under any existing insurance policies the purchaser may have.

## **Belkin Corporation Limited 3-Year Product Warranty**

---

### **How state law relates to the warranty.**

THIS WARRANTY CONTAINS THE SOLE WARRANTY OF BELKIN CORPORATION, THERE ARE NO OTHER WARRANTIES, EXPRESSED OR, EXCEPT AS REQUIRED BY LAW, IMPLIED, INCLUDING THE IMPLIED WARRANTY OR CONDITION OF QUALITY, MERCHANTABILITY OR FITNESS FOR A PARTICULAR PURPOSE, AND SUCH IMPLIED WARRANTIES, IF ANY, ARE LIMITED IN DURATION TO THE TERM OF THIS WARRANTY.

Some states do not allow limitations on how long an implied warranty lasts, so the above limitations may not apply to you.

IN NO EVENT SHALL BELKIN CORPORATION BE LIABLE FOR INCIDENTAL, SPECIAL, DIRECT, INDIRECT, CONSEQUENTIAL OR MULTIPLE DAMAGES SUCH AS, BUT NOT LIMITED TO, LOST BUSINESS OR PROFITS ARISING OUT OF THE SALE OR USE OF ANY BELKIN PRODUCT, EVEN IF ADVISED OF THE POSSIBILITY OF SUCH DAMAGES.

THIS WARRANTY DOES NOT COVER BATTERIES OR THE REPLACEMENT OF BATTERIES.

This warranty gives you specific legal rights, and you may also have other rights, which may vary from state to state. Some states do not allow the exclusion or limitation of incidental, consequential, or other damages, so the above limitations may not apply to you.



## Free Manuals Download Website

<http://myh66.com>

<http://usermanuals.us>

<http://www.somanuals.com>

<http://www.4manuals.cc>

<http://www.manual-lib.com>

<http://www.404manual.com>

<http://www.luxmanual.com>

<http://aubethermostatmanual.com>

Golf course search by state

<http://golfingnear.com>

Email search by domain

<http://emailbydomain.com>

Auto manuals search

<http://auto.somanuals.com>

TV manuals search

<http://tv.somanuals.com>