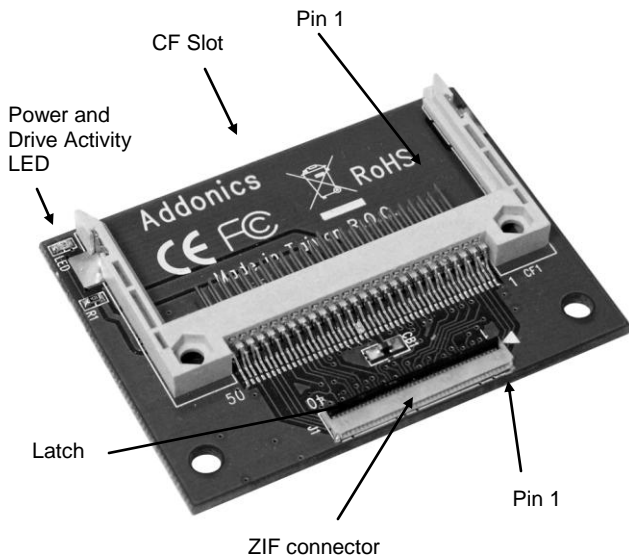


# ADDONICS TECHNOLOGIES

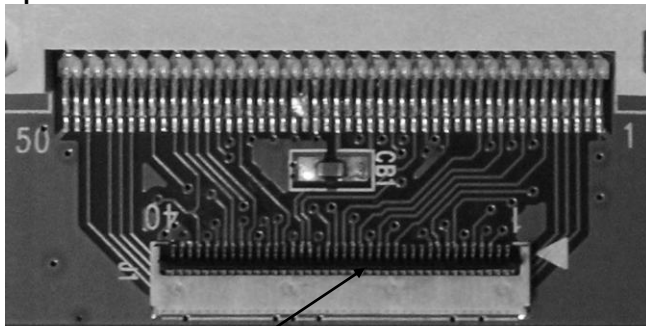
## Model: ADZIFCF

### Installation Guide



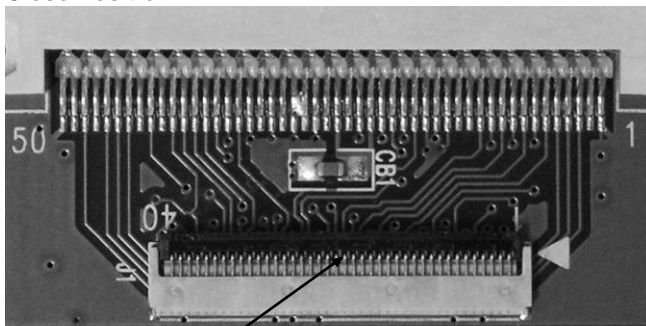
### Locking Mechanism on ZIF Connector

#### Open Position:



The locking mechanism on the ZIF connector is in the **open position** if the latch faces **vertical**.

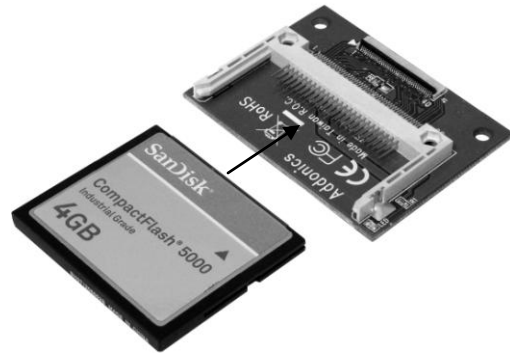
#### Close Position:



The locking mechanism on the ZIF connector is in the **close position** if the latch faces **horizontal**.

Note: Instructions can be found on the FAQ section.

1. Insert the desired Compact Flash into the Addonics 1.8" ZIF - CF Adapter (ADZIFCF). The Compact Flash should be keyed to prevent the card from being incorrectly inserted.



2. Put the mechanism in the open position and slide the flat ribbon cable into the ZIF connector on the adapter.
3. Close the latch to secure the ribbon cable connection.

1.8" ZIF- CF adapter shown below attached to a 1.8" ZIF to 2.5" IDE converter



1.8" ZIF- CF adapter shown below connected to a 2.5" drive enclosure



### TECHNICAL SUPPORT

Email: <http://www.addonics.com/sales/query/>  
Internet: <http://www.addonics.com>

Technical Support (8:30 am to 6:00 pm PST)

Phone: 408 453-6212

Email: <http://www.addonics.com/support/query/>

## Free Manuals Download Website

<http://myh66.com>

<http://usermanuals.us>

<http://www.somanuals.com>

<http://www.4manuals.cc>

<http://www.manual-lib.com>

<http://www.404manual.com>

<http://www.luxmanual.com>

<http://aubethermostatmanual.com>

Golf course search by state

<http://golfingnear.com>

Email search by domain

<http://emailbydomain.com>

Auto manuals search

<http://auto.somanuals.com>

TV manuals search

<http://tv.somanuals.com>