

MIC-3365

6U-sized Intel Pentium III/Celeron CPU
board for ***CompactPCI™***

Copyright Notice

This document is copyrighted, 2000. All rights are reserved. The original manufacturer reserves the right to make improvements to the products described in this manual at any time without notice.

No part of this manual may be reproduced, copied, translated or transmitted in any form or by any means without the prior written permission of the original manufacturer. Information provided in this manual is intended to be accurate and reliable. However, the original manufacturer assumes no responsibility for its use, nor for any infringements upon the rights of third parties which may result from its use.

Acknowledgements

Award is a trademark of Award Software International, Inc.

Fast EtherChannel (FEC) is a trademark of Cisco Systems, Inc.

IBM, PS/2, OS/2, and VGA are trademarks of International Business Machines Corporation.

Intel, Pentium, Celeron, and PRO/100+ are trademarks of Intel Corporation.

Windows is a registered trademark of Microsoft Corporation.

NetWare is a trademark of Novell, Inc.

Symbios is a trademark of Symbios Logic Corporation.

PICMG™, CompactPCI™ and the PICMG™, and CompactPCI™ logos are trademarks of the PCI Industrial Computers Manufacturers Group.

All other product names or trademarks are properties of their respective owners.

CE Notification

The MIC-3365, developed by Advantech CO., LTD., has passed the CE test for environment specification when shielded cables are used for external wiring. We recommend the use of shielded cables.

Part No. 2006336510
Printed in Taiwan

2nd Edition
September 2000

Product warranty

Advantech warrants to you, the original purchaser, that each of its products will be free from defects in materials and workmanship for one year from the date of purchase.

This warranty does not apply to any products which have been repaired or altered by persons other than repair personnel authorized by Advantech, or which have been subject to misuse, abuse, accident or improper installation. Advantech assumes no liability under the terms of this warranty as a consequence of such events.

Because of Advantech's high quality-control standards and rigorous testing, most of our customers never need to use our repair service. If an Advantech product is defective, it will be repaired or replaced at no charge during the warranty period. For out-of-warranty repairs, you will be billed according to the cost of replacement materials, service time and freight. Please consult your dealer for more details.

If you think you have a defective product, follow these steps:

1. Collect all the information about the problem encountered. (For example, CPU speed, Advantech products used, other hardware and software used, etc.) Note anything abnormal and list any on-screen messages you get when the problem occurs.
2. Call your dealer and describe the problem. Please have your manual, product, and any helpful information readily available.
3. If your product is diagnosed as defective, obtain an RMA (return merchandize authorization) number from your dealer. This allows us to process your return more quickly.
4. Carefully pack the defective product, a fully-completed Repair and Replacement Order Card and a photocopy proof of purchase date (such as your sales receipt) in a shippable container. A product returned without proof of the purchase date is not eligible for warranty service.
5. Write the RMA number visibly on the outside of the package and ship it prepaid to your dealer.

Packing List

Before installing your board, ensure that the following materials have been received:

- One MIC-3365 all-in-one single board computer
- One utility CD-ROM disc
- One 6-pin mini-DIN to PS/2 keyboard and PS/2 mouse cable
- One heat sink plate
- One optional bracket for mounting on-board hard disk drive and floppy disk drive
- One hard disk drive (IDE) interface cable (44-pin)
- One 26-pin FPC for floppy drive
- One warranty certificate
- This user's manual

If any of these items are missing or damaged, contact your distributor or sales representative immediately.

Technical Support and Sales Assistance

If you have any technical questions about the MIC-3365 or any other Advantech products, please visit our support website at:

- <http://www.advantech.com.tw/support>

For more information about Advantech's products and sales information, please visit:

- <http://www.advantech.com>

Contents

Chapter 1 Hardware Configuration	1
1.1 Introduction	2
1.2 Specifications	3
1.2.1 Standard SBC functions	3
1.2.2 VGA interface	4
1.2.3 Ultra 2 SCSI Interface (MIC-3365 and MIC-3365F)	4
1.2.4 Mechanical and environmental specifications	4
1.3 Safety Precautions	5
1.4 Function Block Diagram	6
1.5 Board Dimensions	7
1.6 Jumpers	8
1.6.1 Jumper Locations	8
1.6.2 Jumper Settings	9
1.6.3 Clear CMOS (JP5)	10
1.7 Connectors	11
1.8 Front Panel Connectors and Indicators	13
1.9 Installing SDRAM (DIMMs)	14
1.10 Installing CPU heat sink and HDD, FDD brackets	16
1.11 Software Support	18
Chapter 2 Connecting Peripherals	19
2.1 IDE Device (CN12)	20
2.2 Floppy Drive (CN11)	20
2.3 VGA Display Connector (CN2)	21
2.4 Parallel Port Connector (CN1)	21
2.5 PS/2 Keyboard and Mouse Connector (CN7)	21
2.6 Serial Ports (CN13 and CN6)	21
2.7 Ethernet Configuration (CN4 and CN5)	22
2.8 USB Connector (CN8)	22

2.9	Ultra 2 SCSI Interface	23
2.10	Card Installation	23
Chapter 3	Ethernet Software Configuration	25
3.1	Introduction	26
3.2	Utility and Drivers	26
3.3	Installation for Windows NT 4.0	29
Chapter 4	AGP VGA Setup	39
4.1	Introduction	40
4.2	Installation of SVGA Driver	40
4.3	Installation for Windows NT 4.0	41
Chapter 5	SCSI Software Configuration	47
5.1	Introduction	48
5.2	Utility and Drivers	48
5.3	Installation for Windows NT 4.0	50
Chapter 6	Award BIOS Setup	59
6.1	Introduction	60
6.2	Entering Setup	60
6.3	Standard CMOS Features	61
6.4	Advanced BIOS Features	62
6.5	CHIPSET Features Setup	65
6.6	Integrated Peripherals	65
6.7	Power Management Setup	66
6.8	PnP/PCI Configurations	67
6.9	Load Optimized Defaults	68
6.10	Set Password	69
6.11	Save & Exit Setup	70
6.12	Exit Without Saving	71
Appendix A	Programming the Watchdog Timer	73
A.1	Programming the Watchdog Timer	74

Appendix B Pin Assignments	77
B.1 VGA Display Connector (CN2)	78
B.2 Keyboard and Mouse Connector (CN7)	78
B.3 COM1 and COM2 Serial Port (CN13 and CN6)	79
B.4 USB Connector (CN8)	80
B.5 Ethernet RJ-45 Connector (CN4 and CN5)	80
B.6 Parallel Port Connector (CN1)	81
B.7 IDE Connector (CN12)	82
B.8 Floppy Drive Connector (CN11)	83
B.9 System I/O Ports	84
B.10 DMA Channel Assignments	85
B.11 Interrupt Assignments	85
B.12 1st MB Memory Map	86
B.13 J1 connector pin assignments	87
B.14 J2 connector pin assignments	88
B.15 J3 connector pin assignments	89
B.16 J4 connector pin assignments	90
B.17 J5 connector pin assignments	91

Tables

Table 1-1: MIC-3365 jumper descriptions	8
Table 1-2: Clear CMOS	10
Table 1-3: MIC-3365 connector descriptions	11
Table 1-4: Recommended SDRAM	15
Table 2-1: MIC-3365 serial port default settings	22
Table B-1: MIC-3365 CRT display connector	78
Table B-2: MIC-3365 keyboard connector	78
Table B-3: MIC-3365 COM1 and COM2 serial port	79
Table B-4: MIC-3365 USB1/USB2 connector	80
Table B-5: MIC-3365 Ethernet RJ-45 connector	80
Table B-6: MIC-3365 parallel port connector	81
Table B-7: MIC-3365 IDE connector	82
Table B-8: MIC-3351 floppy drive connector	83
Table B-9: System I/O ports	84
Table B-10: DMA channel assignments	85
Table B-11: Interrupt assignments	85
Table B-12: 1st MB memory map	86
Table B-13: J1 connector pin assignments	87
Table B-14: J2 connector pin assignments	88
Table B-15: J3 connector pin assignments	89
Table B-16: J4 connector pin assignments	90
Table B-17: J5 connector pin assignments	91

Figures

Figure 1-1: MIC-3365 function block diagram	6
Figure 1-2: MIC-3365 board dimensions	7
Figure 1-3: MIC-3365 jumper locations	8
Figure 1-4: MIC-3365 connector locations	12
Figure 1-5: MIC-3365 front panel connector and indicator locations	13
Figure 1-6: Heat sink installation for 1 slot wide solution	16
Figure 1-7: Heat sink installation for 2 slot wide solution	17
Figure 2-1: Installing the card into the chassis	24
Figure 6-1: Initial Setup screen	60
Figure 6-2: Standard CMOS Features screen	61
Figure 6-3: Advanced BIOS Features screen	62
Figure 6-4: Advanced Chipset Features screen	65
Figure 6-5: Integrated Peripherals screen	66
Figure 6-6: Power Management Setup screen	67
Figure 6-7: PnP/PCI Configurations screen	68
Figure 6-8: Load Optimized Defaults screen	68
Figure 6-9: Set Password screen	69
Figure 6-10: Save & Exit Setup screen	70
Figure 6-11: Exit Without Saving screen	71

CHAPTER
1

Hardware Configuration

1.1 Introduction

The MIC-3365 is a 6U-sized Intel® Pentium® III/Celeron™ CPU board and complies with PICMG 2.0 R2.1 CompactPCI™ specifications. The MIC-3365 supports both FC-PGA Intel® Pentium® III Coppermine processors and Intel® Celeron™ processors.

The MIC-3365 is available in three versions: MIC-3365, MIC-3365D, and MIC-3365F.

Model	COM	USB	SCSI	PCI-to-PCI bridge	width	On-board HDD & FDD
MIC-3365	1	1	Yes	1	1-slot	-
MIC-3365D	1	1	-	2	1-slot	-
MIC-3365F	2	2	Yes	1	2-slot	Yes

Please check which version of the MIC-3365 you have on hand. Some of the functions in this manual may not be applicable to some versions. The MIC-3365 supports rear transition board and is best performed with the MIC-3302. Please refer to the MIC-3302's manual for more detailed information.

1.2 Specifications

1.2.1 Standard SBC functions

- **CPU:** Intel® Socket 370 Pentium® III Coppermine CPU up to 700 MHz, Intel® Socket 370 Celeron™ CPU up to 566 MHz
- **BIOS:** Award BIOS (Intel® FWH 4 Mb)
- **Chipset:** Intel® 810
- **System bus frequency:** 100/66 MHz
- **Bus interface:** 32-bit, 33 MHz, PICMG 2.0 compliant
- **L2 cache:** CPU built-in 256 KB (Pentium® III) or 128 KB (Celeron™) on die
- **RAM:** Two 168-pin DIMM sockets support up to 512 MB SDRAM at 100 MHz, unbuffered
- **EIDE interface:** Handles up to 4 IDE HDDs or other IDE devices. Supports PIO mode 4 and Ultra DMA/33, Ultra DMA/66 mode (via J3 connector)
- **FDD interface:** Supports up to two floppy disk drives (via J3 connector)
- **Parallel port:** Configured to LPT1, LPT2, LPT3 or disabled. Supports multi-mode parallel port (SPP/ECP/EPP)
- **Serial ports:** Two RS-232 ports with 16C550 UARTs. MIC-3365 and MIC-3365D provides one serial port, and MIC-3365F provides two serial ports on the front panel
- **PCI Watchdog timer (MIC-3365D only):** Can generate a system reset. Time interval is from 1 to 63 seconds, jumperless with run-time setup. To program the watchdog timer, refer to Appendix A, "Programming the Watchdog Timer".
- **Ethernet:** Dual Intel® 82559 Fast Ethernet Controller Chips, 10/100 Base-TX with RJ-45 connectors
- **Keyboard/mouse connector:** One 6-pin mini-DIN connector on the front panel

- **USB interface:** Two USB connectors with fuse protection. MIC-3365 and MIC-3365D provides one USB connector and MIC-3365F provides two USB connectors on the front panel
- **PCI-to-PCI bridge:** One/Two Intel® DEC 21150 PCI bus controller chips, drive up to 7/14 PCI bus master peripherals. MIC-3365 and MIC-3365F support 7 PCI bus masters and MIC-3365D supports 14 PCI bus masters.

1.2.2 VGA interface

- **Controller:** Chipset built-in VGA display
- **Display resolution:** Supports non-interlaced CRT monitor resolutions up to 1024 x 768 x 16-bit color for 3D graphics, and 1600 x 1200 x 8-bit color for 2D graphics. 24-bit color up to 1280 x 1024.

1.2.3 Ultra 2 SCSI Interface (MIC-3365 and MIC-3365F)

- **Controller:** Symbios SYM53C895
- Supports 16-bit Low Voltage Differential (LVD) and Single Ended (SE) signaling
- Performs Ultra 2 SCSI LVD synchronous. Transfers as fast as 80 MB/s
- Available on the rear transition board (MIC-3302) via J5 connector

1.2.4 Mechanical and environmental specifications

- **Board size:** 233.35 x 160 mm (6U size), MIC-3365 and MIC-3365D is 1-slot (4TE) wide, and MIC-3365F is 2-slot (8TE) wide
- **Max. power requirements:** +5 V (4.75 ~ 5.25 V) @ 6.38 A (Intel® Celeron™ 500 MHz)
- **Operating temperature:** 0 ~ 60° C (32 ~ 158° F)
- **Storage temperature:** -20° C ~ 80° C (-4 ~ 176° F)

- **Humidity (operating and storage):** 5 ~ 95% (non-condensing)
- **Board weight:** 0.8 kg (1.8 lb)
- **Shock:** 20 G (operating); 50 G (storage/transit)
- **Random vibration:** 1.5 Grms

1.3 Safety Precautions

Follow these simple precautions to protect yourself from harm and the products from damage.

1. To avoid electrical shock, always disconnect the power from your PC chassis before you work on it. Don't touch any components on the CPU card or other cards while the PC is on.
2. Disconnect power before making any configuration changes. The sudden rush of power as you connect a jumper or install a card may damage sensitive electronic components.
3. Always ground yourself to remove any static charge before you touch your CPU card. Be particularly careful not to touch the chip connectors. Modern integrated electronic devices, especially CPUs and memory chips, are extremely sensitive to static electrical discharges and fields. Keep the card in its antistatic packaging when it is not installed in the PC, and place it on a static dissipative mat when you are working with it. Wear a grounding wrist strap for continuous protection.

1.4 Function Block Diagram

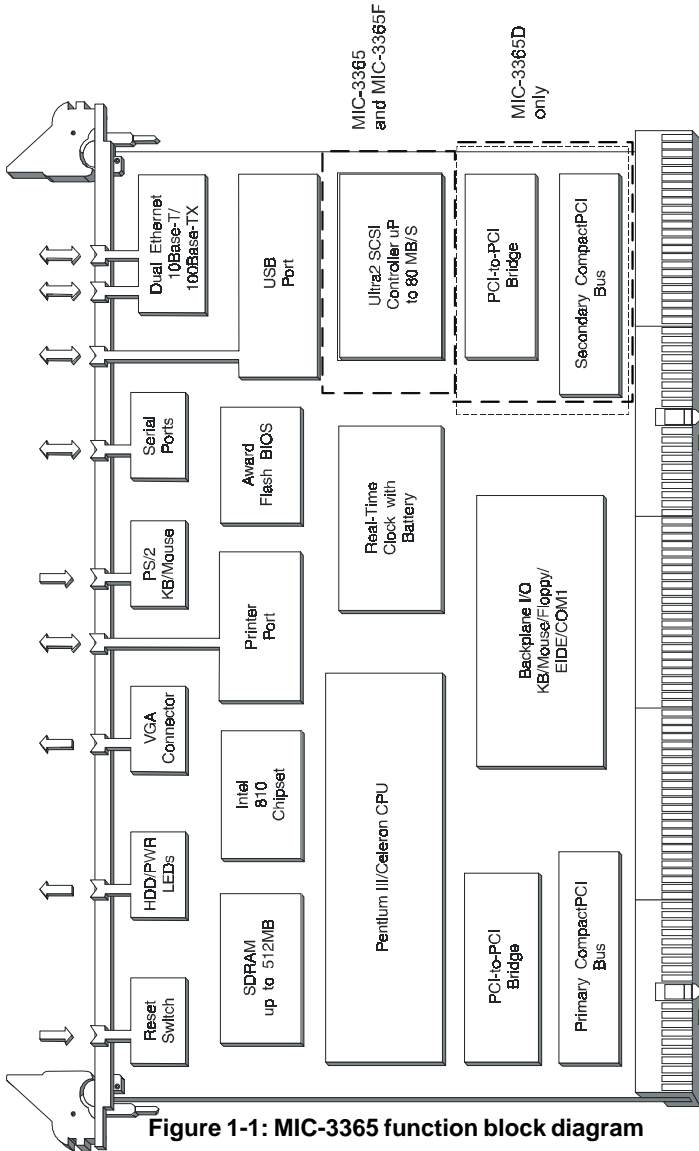


Figure 1-1: MIC-3365 function block diagram

1.5 Board Dimensions

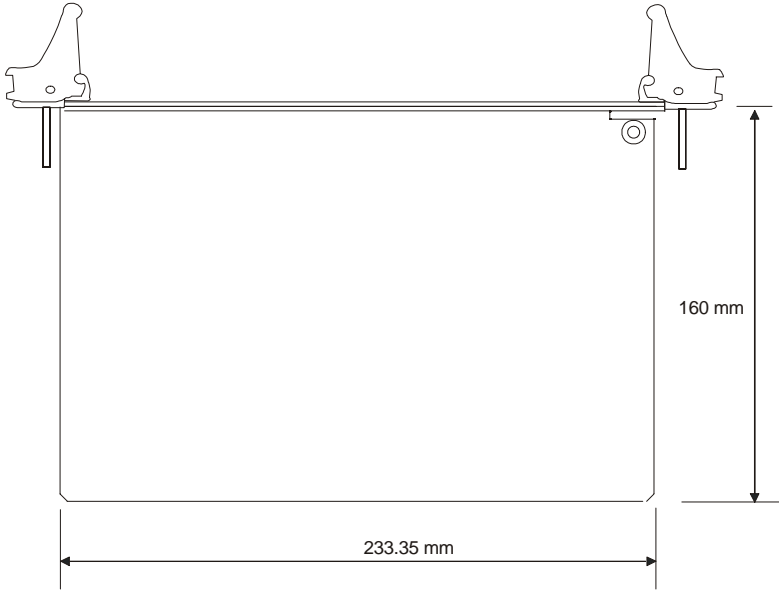


Figure 1-2: MIC-3365 board dimensions

1.6 Jumpers

1.6.1 Jumper Locations

The MIC-3365 provides jumpers for configuring your board for specific applications other than the default settings.

Table 1-1 list the jumper functions. Figure 1-3 illustrates the jumper locations. The default jumper setting is illustrated in Figure 1-3.

Table 1-1: MIC-3365 jumper descriptions

Number	Function
JP5	Clear CMOS

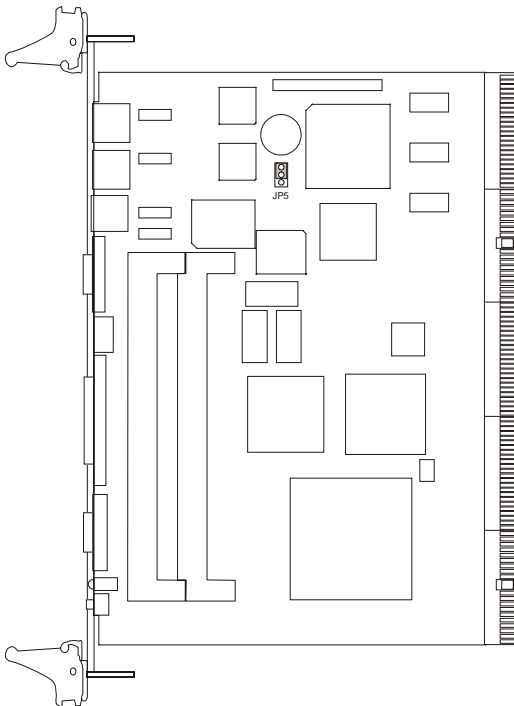


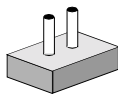
Figure 1-3: MIC-3365 jumper locations

1.6.2 Jumper Settings

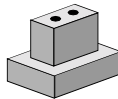
This section tells how to set the jumpers to configure your card. It gives the card default configuration and your options for each jumper. After you set the jumpers and install the card, you will also need to run the BIOS Setup program (discussed in Chapter 6) to configure the serial port addresses, floppy/hard disk drive types and system operating parameters. Connections, such as hard disk cables, appear in Chapter 2.

For the locations of each jumper, see the board layout diagram depicted earlier in this chapter.

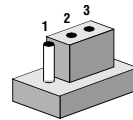
You configure your card to match the needs of your application by setting jumpers. A jumper is a metal bridge that closes an electrical circuit. It consists of two metal pins and a small metal cap (often protected by a plastic cover) that slides over the pins to connect them. To "close" a jumper you connect the pins with the cap. To "open" a jumper you remove the cap. Sometimes a jumper will have three pins, labeled 1, 2 and 3. In this case you connect either pins 1 and 2 or 2 and 3.



Open



Closed



Closed 2-3

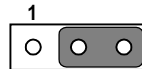
The jumper settings are schematically depicted in this manual as follows:



Open



Closed



Closed 2-3

You may find a pair of needle-nose pliers useful for setting the jumpers.

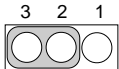
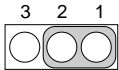
If you have any doubts about the best hardware configuration for your application, contact your local distributor or sales representative before you make any changes.

1.6.3 Clear CMOS (JP5)

This jumper is used to erase CMOS data and reset system BIOS information. Follow the procedures below to clear the CMOS.

1. Turn off the system.
2. Close jumper JP5 (2-3) for about 2-3 seconds.
3. Close jumper JP5 (1-2).
4. Turn on the system. The BIOS is reset to its default setting.

Table 1-2: Clear CMOS

CMOS	JP5
Clear	 <p>A diagram of a three-pin jumper labeled JP5. The pins are numbered 3, 2, and 1 from left to right. A shaded rectangular box covers pins 2 and 3, indicating they are connected.</p>
Normal	 <p>A diagram of a three-pin jumper labeled JP5. The pins are numbered 3, 2, and 1 from left to right. A shaded rectangular box covers pins 1 and 2, indicating they are connected.</p>

1.7 Connectors

On-board connectors link to external devices such as hard disk drives, keyboards, or floppy drives, etc. Table 1-3 lists the function of each connector and Figure 1-4 and Figure 1-5 illustrate each connector location. Chapter 2 gives instructions for connecting external devices to your card.

Table 1-3: MIC-3365 connector descriptions

Number	Function
CN3	Reset switch
CN1	Parallel port
CN2	VGA connector
LED2	HDD LED and Power LED
CN4	Ethernet connector 1
CN5	Ethernet connector 2
CN6	COM2
CN7	PS/2 Keyboard and mouse connector
CN8	USB connector
CN10	Fan connector
CN11	Floppy disk drive connector
CN12	IDE connector
CN13	COM1
DIM1	DIMM socket 1
DIM2	DIMM socket 2
J1/J2	Primary CompactPCITM bus
J3/J4/J5	Rear I/O transition
CPU1	Socket 370 for CPU

Please refer to Appendix B for pin assignments.

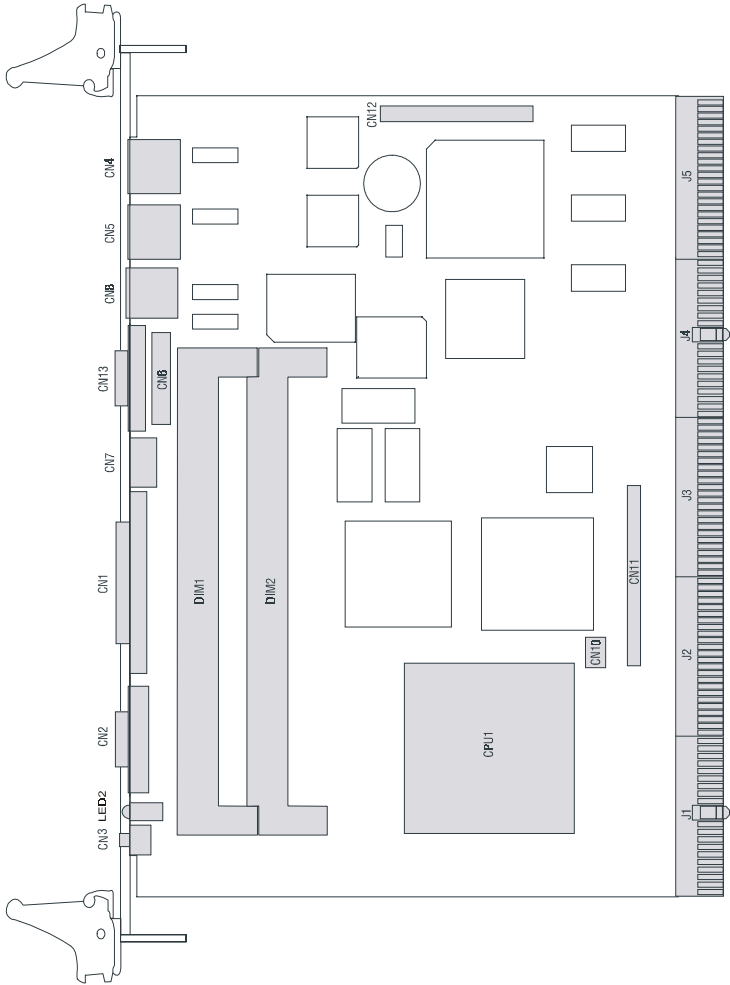


Figure 1-4: MIC-3365 connector locations

1.8 Front Panel Connectors and Indicators

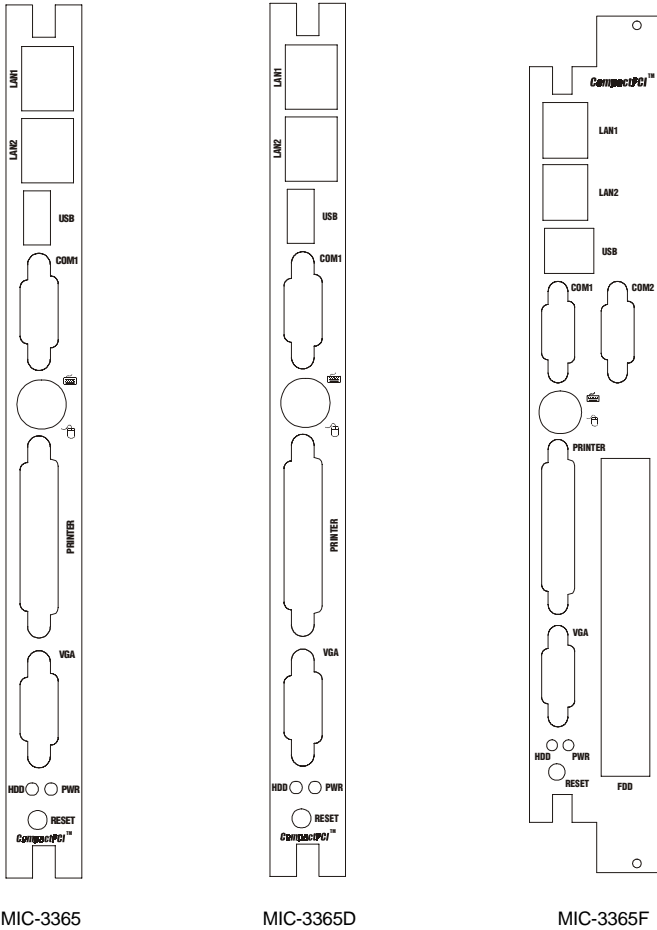


Figure 1-5: MIC-3365 front panel connector and indicator locations

1.9 Installing SDRAM (DIMMs)

The MIC-3365 provides two 168-pin DIMM sockets. Each socket accepts either 16, 32, 64, 128 or 256 MB SDRAM. The sockets can be filled in any combination with DIMMs of any size, giving a total memory capacity between 16 and 512 MB.

Since the MIC-3365 can operate at 66 or 100 MHz, we recommend using PC100-compliant DIMMs.

The procedure for installing DIMMs appears below. Please follow these steps carefully.

1. Ensure that all power supplies to the system are switched Off.
2. Install the DIMM modules. Install the DIMM so that its gold pins point down into the DIMM socket.
3. Slip the DIMM into the socket and carefully fit the bottom of the card against the connectors.
4. Gently push the DIMM into the socket, until the clips on the ends of the DIMM sockets snap into place.
5. Check to ensure that the DIMM is correctly seated and all connector contacts touch. The DIMM should not move around in its socket.

Note: The DIMM modules can only fit into sockets one way, in accordance with the keyed notches along the bottom edge of the modules. Their gold pins must point down into the DIMM socket.

Note: *To ensure compatibility between the MIC-3365 and DRAMmodules, our R&D team has compiled a list of recommended SDRAMs. Only those which have passed the team's strict and rigorous testing procedures are included. Please refer to the table below. You may order the SDRAMs locally or from Advantech. If you want to buy from us, please contact Advantech's sales representatives for details.*

Vendor	Ordering Number	Chip Name	Capacity	Specification
Data Specialties	T0951F3365	NEC D4564163G5-A80 D4564163G5-A10	64MB	PC-100
Data Specialties	T0952F3365	NEC D45128163G5-A80 D45128163G5-A10	128MB	PC-100
Unigen	T0951U3365	NEC D4564163G5-A80 D4564163G5-A10	64MB	PC-100
Unigen	T0952U3365	NEC D45128163G5-A80 D45128163G5-A10	128MB	PC-100

Table 1-4: Recommended SDRAM

1.10 Installing CPU heat sink and HDD, FDD brackets

The MIC-3365 accepts Intel® socket 370 Pentium® III Cuppermine CPU or Intel® socket 370 Celeron™ CPU. In order to meet critical environmental conditions and the physical space of the MIC-3365 at the same time, Advantech designed a heat sink to fulfill both needs.

Please refer to Figure 1-6 for an illustration of the heat sink used for the MIC-3365 and MIC-3365D, 1-slot wide solution. Figure 1-7 illustrates the installation method of the heat sink, HDD, and FDD brackets used for the MIC-3365F.

Because the thickness of the Pentium® III and Celeron™ CPU are different, Advantech provides a samll aluminum plate along with the heat sink when installed with a Pentium® III CPU. The small aluminum plate is default fastened on the heat sink in the factory. If users would like to use a Celeron™ CPU on the MIC-3365, please remove the small aluminum plate from the heat sink.

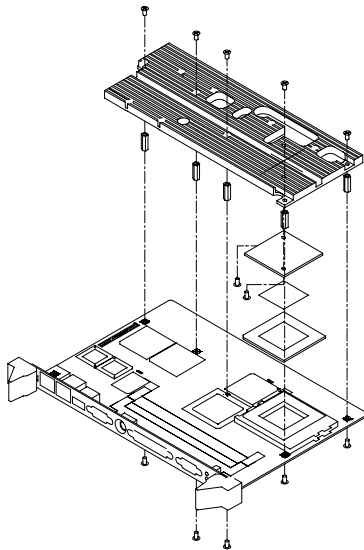


Figure 1-6: Heat sink installation for 1 slot wide solution

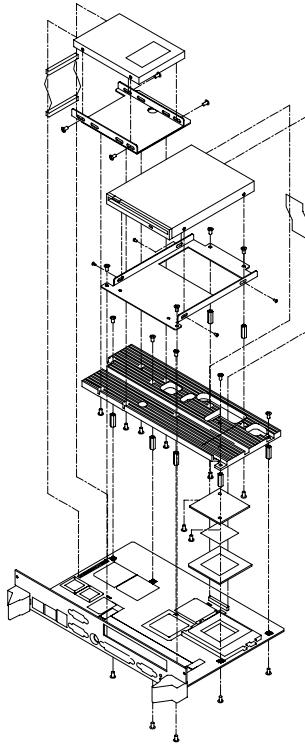


Figure 1-7: Heat sink installation for 2 slot wide solution

1.11 Software Support

The MIC-3365 supports lots of operating systems, such as Microsoft Windows family, Linux, SCO UNIX, QNX, etc.

Note: At the beginning of QNX installation process, please follow the system's installation guide shown on the screen. Press anykey and F2 when asked, and then choose VGA 16 Color Only, and press <space> to continue. Otherwise, you won't be able to continue installing QNX.

CHAPTER
2

Connecting Peripherals

2.1 IDE Device (CN12)

The MIC-3365 provides two IDE (Integrated Device Electronics) channels via the J3 connector to the rear transition board MIC-3302. Four IDE drives can be connected to the MIC-3365 through the rear transition board MIC-3302.

The MIC-3365F provides a mounting bracket to mount a 2.5" hard disk drive on board. Users can connect this 2.5" hard disk drive to the on-board 44-pin IDE connector (CN12).

Users can connect two IDE drives to each IDE channel. If two drives are installed on one channel, remember to set one as the master and the other one as the slave. You may do this by setting the jumpers on the drives. Refer to the documentation that came with your drive for more information. A jumper diagram usually appears on the top side of a hard disk drive.

Warning: *Plug the other end of the cable into the drive with pin 1 on the cable corresponding to pin 1 on the drive. Improper connection will damage the drive.*



Note: *We don't recommend connection to the following Seagate brand IDE HDD models: ST 31276A, ST 31720A, ST 32531A, ST 33240A or ST 34340A*

2.2 Floppy Drive (CN11)

The MIC-3365 supports two floppy disk drives via the J3 connector to the rear transition board MIC-3302. Users can connect up to two floppy drives to the connector on the MIC-3302.

The MIC-3365F provides a mounting bracket to mount a slim-type floppy disk drive on board. Users can connect this slim-type FDD to the CN11 connector.

2.3 VGA Display Connector (CN2)

The MIC-3365 provides an VGA chipset built-in display for high performance application. The MIC-3365's CN2 is a DB-15 connector for VGA monitor input. Pin assignments for the VGA display are detailed in Appendix A.

2.4 Parallel Port Connector (CN1)

The parallel port is normally used to connect the CPU board to a printer. The MIC-3365 includes an on-board parallel port, accessed through a DB 25-pin connector, CN1, on the front panel.

The parallel port is designated as LPT1 and can be disabled or changed to LPT2 or LPT3 from the system BIOS setup.

2.5 PS/2 Keyboard and Mouse Connector (CN7)

The MIC-3365 provides a 6-pin mini-DIN connector (CN7) on the front panel for connection of PS/2 keyboard and PS/2 mouse. The MIC-3365 comes with a cable to convert from the single 6-pin mini-DIN connector to a double PS/2 keyboard connector and PS/2 mouse connector. Since these two connectors are identical, please follow the icons on the cable to plug the keyboard and the mouse into their correct connectors.

2.6 Serial Ports (CN13 and CN6)

The MIC-3365 offers two serial ports: COM1 and COM2 in MIC-3365F version, both in RS-232. These ports allow users to connect to serial devices (a mouse, printers, etc.) or a communication network.

You can select the address for each port (For example, 3F8H [COM1], 2F8H [COM2]) or disable it, using the BIOS Advanced Setup program, covered in Chapter 6.

Different devices implement the RS-232 standard in different ways. If you are having problems with a serial device, be sure to check the pin assignments for the connector.

The IRQ and address range for both ports are fixed. However, if you wish to disable the port or change these parameters later, you can do this in the system BIOS setup. The table below shows the settings for the MIC-3365 board's ports:

Table 2-1: MIC-3365 serial port default settings

Port	Address	Default
COM1	3F8, 3E8	3F8/IRQ4
COM2	2F8, 2E8	2F8/IRQ3

2.7 Ethernet Configuration (CN4 and CN5)

The MIC-3365 is equipped with dual high performance 32-bit PCI-bus Fast Ethernet interfaces which are fully compliant with IEEE 802.3u 10/100Base-TX specifications. It is supported by all major network operating systems and is 100% Novell NE-2000 compatible. Two on-board RJ-45 jacks provide convenient connection to the network.

The medium type can be configured via the software program included on the utility CD-ROM disc. (See Chapter 3 for detailed information.)

2.8 USB Connector (CN8)

The MIC-3365 provides one USB (Universal Serial Bus) interface on the front panel, and the MIC-3365F provides two USB interfaces on the front panel. The USB interface gives complete plug and play, hot attach/detach for up to 127 external devices. The MIC-3365 USB interfaces comply with USB specification rev. 1.0 and are fuse protected.

The USB interfaces can be disabled in the system BIOS setup. The USB controller default is "Enabled" but the USB keyboard support default is "Disabled".

2.9 Ultra 2 SCSI Interface

The MIC-3365 and MIC-3365F provides an Ultra 2 SCSI interface on the rear transition board MIC-3302 via the J5 connector. The MIC-3302 has a 68-pin, dual in-line connector for Ultra 2 SCSI devices. Connection of SCSI devices requires special attention, especially when determining the last drive on the SCSI chain. Refer to Chapter 5 and your device's operating manual for detailed installation advice.

2.10 Card Installation

The CompactPCI connectors are firm and rigid, and require careful handling while plugging and unplugging. Improper installation of a card can easily damage the backplane of the chassis.

The inject/eject handles of MIC-3365 help you install and remove the card easily and safely. Follow the procedure below to install the MIC-3365 into a chassis:

To install a card:

1. Hold the card vertically. Be sure that the card is pointing in the correct direction. The components of the card should be pointing to the right-hand side.
2. Holding both handles, pull out the red portion in the middle of the handle to unlock it.

Caution: Keep your fingers away from the hinge to prevent your fingers from getting pinched.

3. Insert the card into the chassis by sliding the upper and lower edges of the card into the card guides.
4. Push the card into the slot gently by sliding the card along the card guide until the handles meet the rectangular holes of the cross rails.

Note: If the card is correctly positioned and has been slid all the way into the chassis, the handle should match the rectangular holes. If not, remove the card from

the card guide and repeat step 3 again. Do not try to install a card by forcing it into the chassis.

5. Pull the upper handle down and lift the lower handle up to push the card into place.
6. Secure the card by pushing in the red handle to lock it into place.

To remove a card:

1. Unscrew the screws on the front panel. Pull out the red portion in the middle of the handle to unlock the handle.
2. Lift the upper handle up and press the lower handle down to release the card from the backplane.
3. Slide the card out.

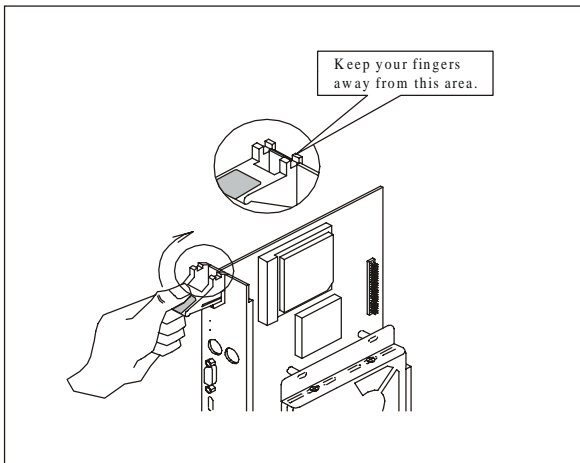


Figure 2-1: Installing the card into the chassis

CHAPTER
3

Ethernet Software Configuration

3.1 Introduction

The MIC-3365 has two on-board high-performance fast Ethernet interfaces which comply with IEEE 802.3/802.3u for 10Base-T and 100 Base-TX data rates.

The module uses two Intel® 82559 fast Ethernet controllers with integrated PHY and is compatible with the Intel® PRO/100+ Server and Client Adapter. The dual Ethernet channel design provides several options for increasing throughput and fault tolerance when running Windows NT 4.0 or NetWare 4.1x and newer versions of these, includes:

- Adapter Fault Tolerance (AFT) - provides automatic redundancy for your Ethernet channel. If the primary channel fails, the secondary takes over.
- Adaptive Load Balancing (ALB) - creates a team of 2 channels to increase transmission throughput. Also includes AFT and ALB. This function works with any 100BASE-TX switch.
- Fast EtherChannel (FEC) - creates a team of 2 to 4 channels to increase transmission and reception throughput. Also includes AFT. This function requires a Cisco switch with FEC capability.

The MIC-3365 comes with drivers for a wide variety of networks and operating systems. The MIC-3365 is an excellent choice for operation in standalone and harsh industrial environments.

3.2 Utility and Drivers

The MIC-3365's on-board Ethernet interface supports all major network operating systems. The installation instructions and drivers for different operating systems are located in the following directories of the utility CD-ROM disc:

General Information:

- `\MIC3365\LAN\README.TXT`: General information about the drivers

For Microsoft Windows:

- `\MIC3365\LAN\INFO\MS\MS.TXT`: Installation instructions for

Microsoft Windows

- **\MIC3365\LAN\E100BNT.SYS (NDIS 4.0), \MIC3365\LAN\OEMSETUP.INF:** Drivers for Windows NT 4.0
- **\MIC3365\LAN\E100B.SYS (NDIS 3), \MIC3365\LAN\OEMSETUP.INF:** Drivers for Windows NT 3.51
- **\MIC3365\LAN\NET82557.INF:** Drivers for Windows 98
- **\MIC3365\LAN\E100BNT.SYS (NDIS 4.0), \MIC3365\LAN\NET82557.INF:** Drivers for Windows 95
- **\MIC3365\LAN\WFW\E100B.38_, \MIC3365\LAN\WFW\OEMSETUP.INF:** Drivers for Windows 3.1

For Novell NetWare

- **\MIC3365\LAN\INFO\NETWARE\NETWARE.TXT:** Installation instructions for Novell NetWare
- **\MIC3365\LAN\NWSERVER\3X4X.OLD\E100B.LAN:** Drivers for NetWare 3.12 and 4.10
- **\MIC3365\LAN\NWSERVER\311LAN\E100B.LAN:** Drivers for NetWare 3.11
- **\MIC3365\LAN\OS2\E100BODI.SYS:** Drivers for NetWare OS/2 ODI Client
- **\MIC3365\LAN\DOS\E100BODI.COM:** Drivers for DOS ODI Client

For UNIX

- **\MIC3365\LAN\INFO\UNIX\UNIX.TXT:** Installation instructions for UNIX

For Other Operating Systems

- **\MIC3365\LAN\INFO\OTHER\OTHER.TXT:** Installation instructions for other operating systems
- **\MIC3365\LAN\DOS\E100B.DOS:** Drivers for IBM LAN support for AS/400 and NetWare (for LANSUP)
- **\MIC3365\LAN\DOS\E100BODI.COM:** Drivers for IBM LAN

support for AS/400 and NetWare (for ODINSUP)

- **\\MIC3365\LAN\OS2\E100B.OS2:** Drivers for LAN server (OS/2 driver)
- **\\MIC3365\LAN\DOS\E100B.DOS:** Drivers for LAN server (DOS driver)
- **\\MIC3365\LAN\DOS\E100B.DOS:** Drivers for BANYAN NDIS workstation
- **\\MIC3365\LAN\DOS\E100B.DOS:** Drivers for LANTASTIC 6.0
- **\\MIC3365\LAN\DOS\E100B.DOS:** Drivers for general NDIS 2.X (DOS driver)
- **\\MIC3365\LAN\OS2\E100B.OS2:** Drivers for general NDIS 2.X (OS/2 driver)

Before installing drivers, please refer to the installation instructions of each operating system.

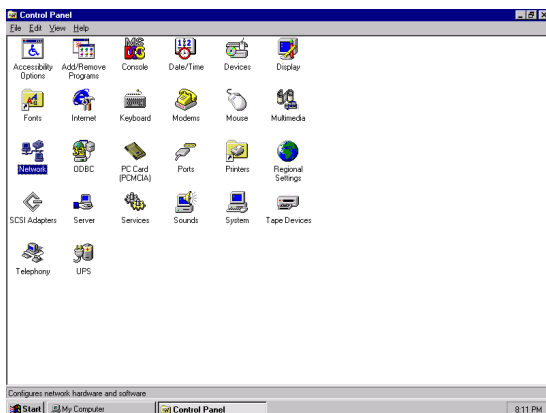
Note: Do not use the driver recommended by the Windows 95/98/NT Add New Hardware wizard. Choose the driver from the utility CD-ROM disc.

Note: Operating system vendors may post driver updates on their web sites. Please visit the web sites of OS vendors to download updated drivers.

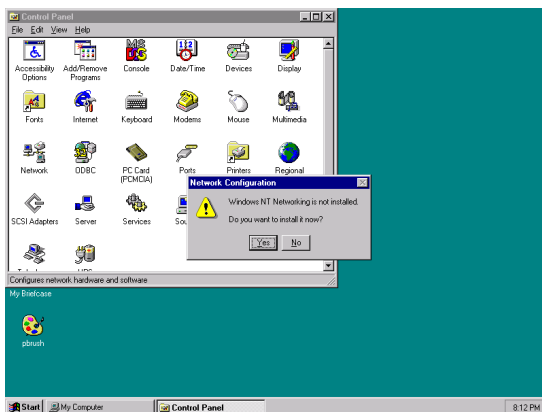
3.3 Installation for Windows NT 4.0

Before installing; create a new folder [] ,\MIC3365\LAN\, in your "E:" drive on your hard disk drive, and download all files from the directory, \MIC3365\LAN\, on the utility CD-ROM to it.

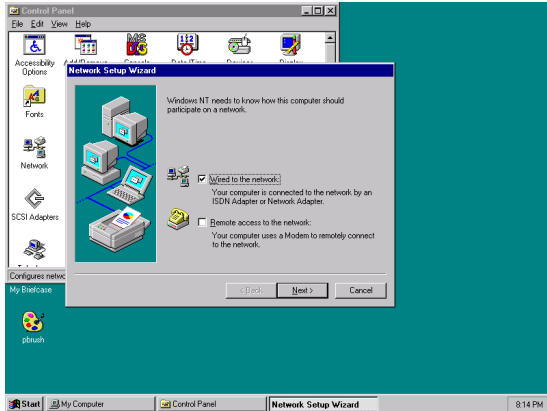
1. In the Windows NT screen, select "Start", click "Settings".
Click the "Control Panel" item and choose "Network".



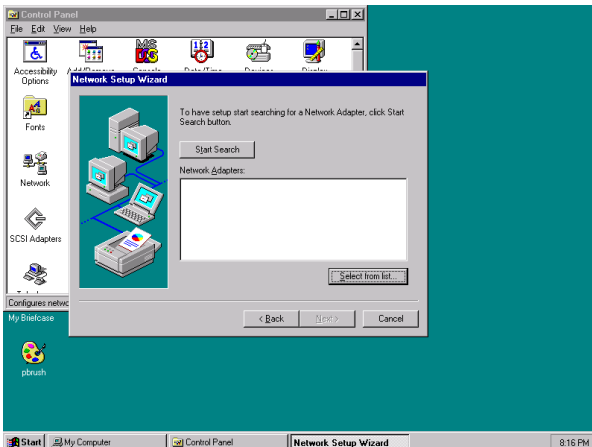
2. Click "Yes".



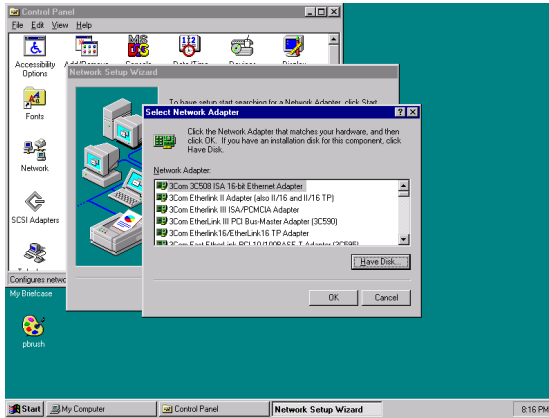
3. Click "Wired to the Network", or users may choose "Remote access to the network" if applicable.



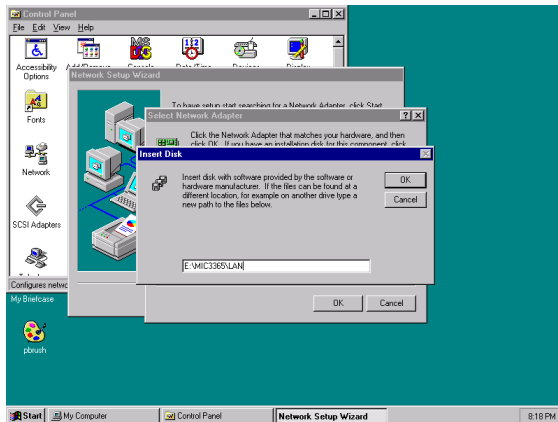
4. Click "Select from list".



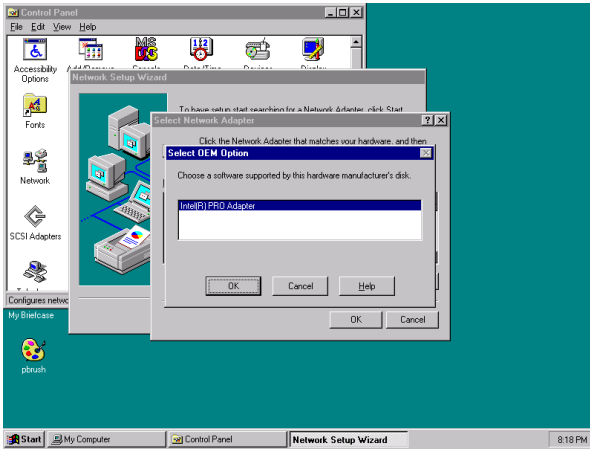
5. Click "Have Disk".



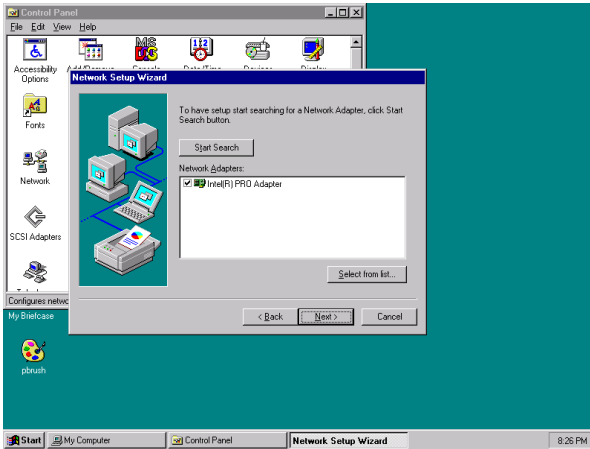
6. Type in "E:\MIC3365\LAN" in the blank column and click "OK".



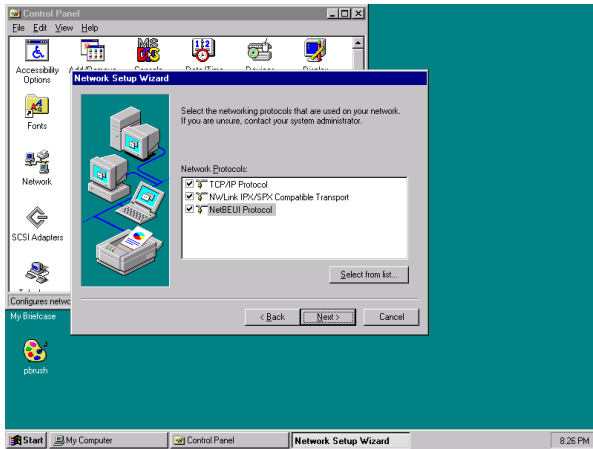
7. Click "OK".



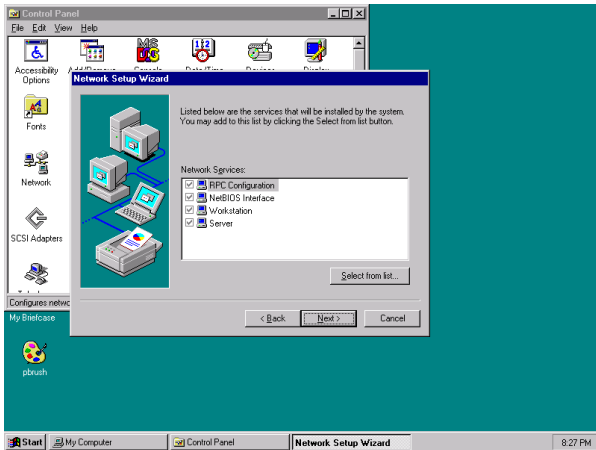
8. Click "Next".



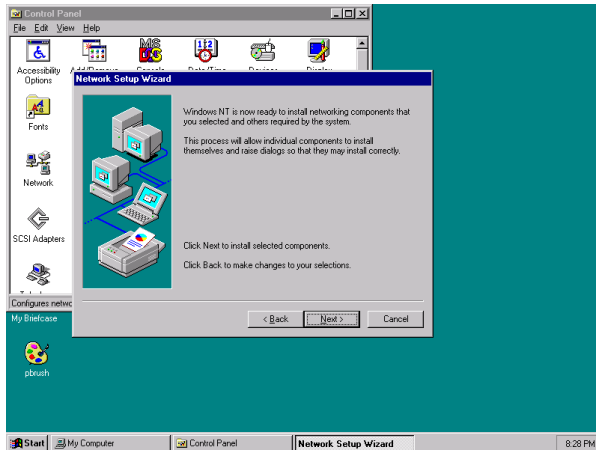
9. Click "Next".



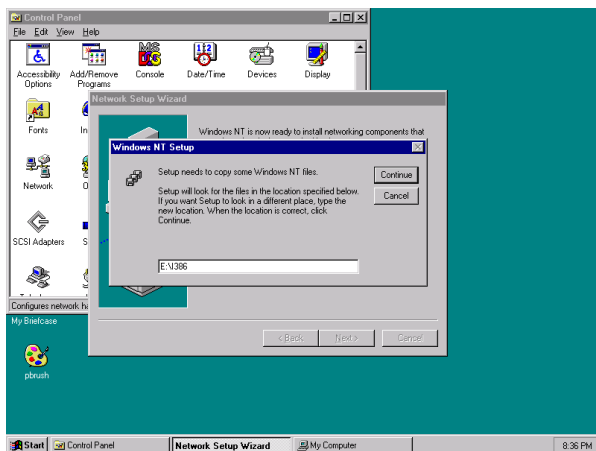
10. Click "Next".



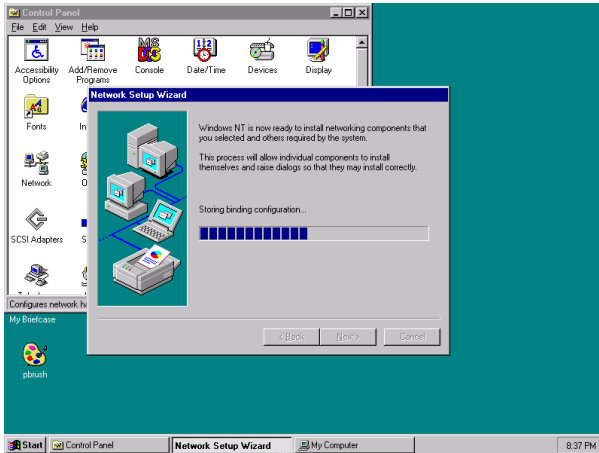
11. Click "Next".



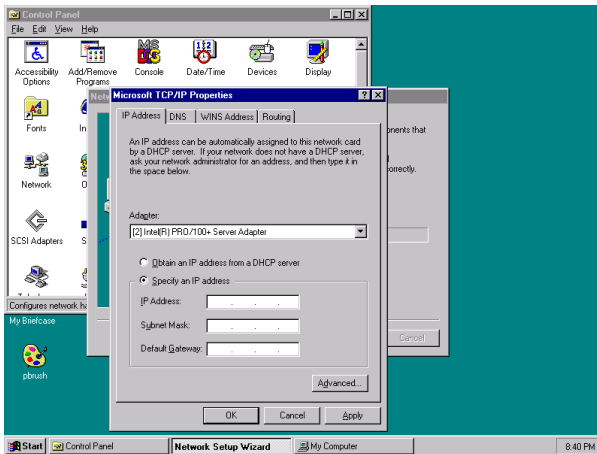
12. Insert Windows NT source disc in drive E. Type "E:\I386" in the blank column or any other directory that contains the Windows NT files. Click "Continue".



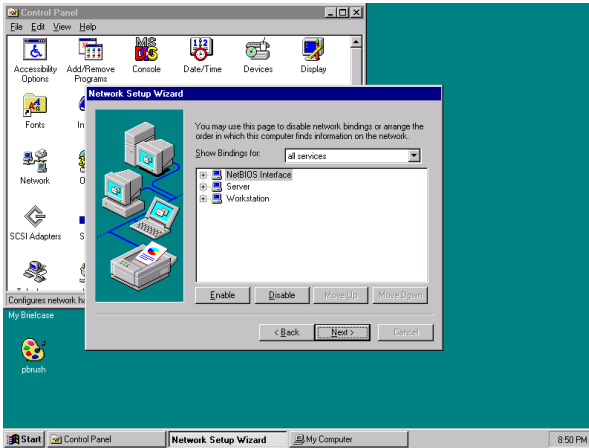
13. Wait for the installation to finish.



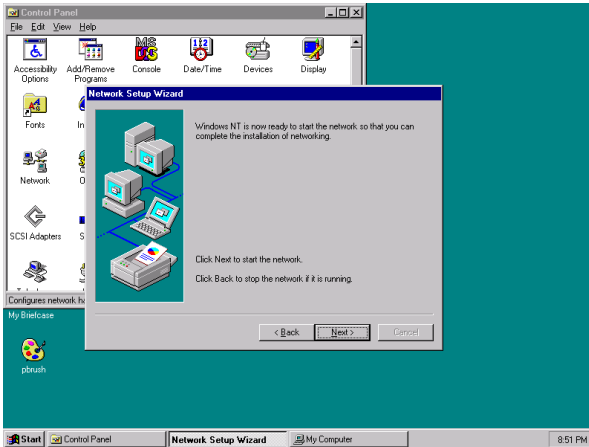
14. Complete the settings with users' network settings. Click "OK".



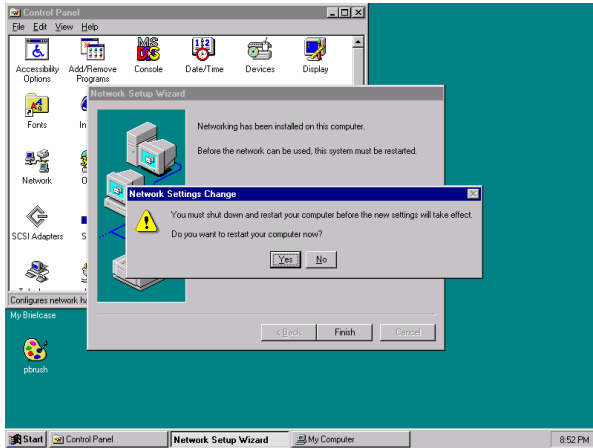
15. Click "Next".



16. Click "Next".



17. Click "Yes" to restart the computer and enable the changes to take effect.



CHAPTER
4

AGP VGA Setup

4.1 Introduction

The MIC-3365 uses chipset built-in AGP VGA display. This chapter describes how to install the VGA drivers to the MIC-3365.

4.2 Installation of SVGA Driver

The MIC-3365 is supplied with a utility CD-ROM disc that holds the necessary files for setting up the VGA display under the directory \MIC-3365\VGA. The contents and path names of this directory are listed below:

- **MIC3365\VGA\Win311:** VGA utility for Windows 3.1
- **MIC3365\VGA\Win9x:** VGA utility for Windows 95/98
- **MIC3000\VGA\Nt351:** Utility for Windows NT 3.51
- **MIC3365\VGA\Nt40:** VGA utility for Windows 4.0

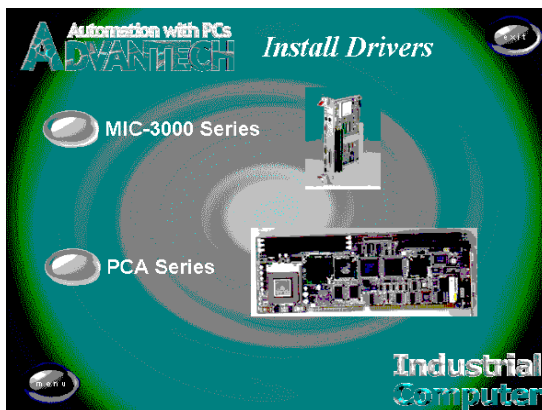
Complete the following steps to install the VGA driver. Follow the procedures in the flow chart that apply to the operating system you are using with your MIC-3365.

4.3 Installation for Windows NT 4.0

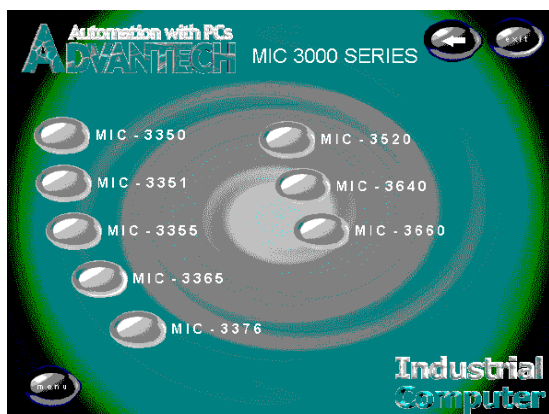
1. Insert the utility CD-ROM disc in the CD-ROM drive and wait for the auto-run screen to pop up. Click "Install Drivers".



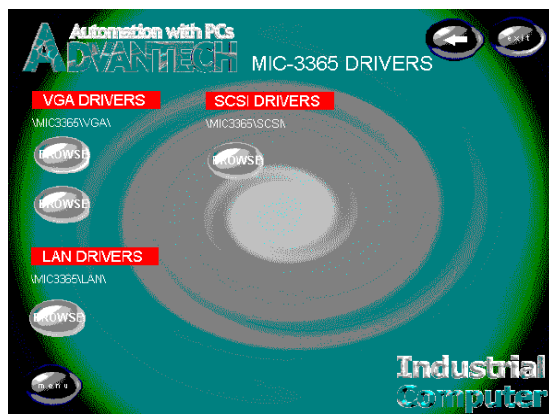
2. Click "MIC-3000 Series".



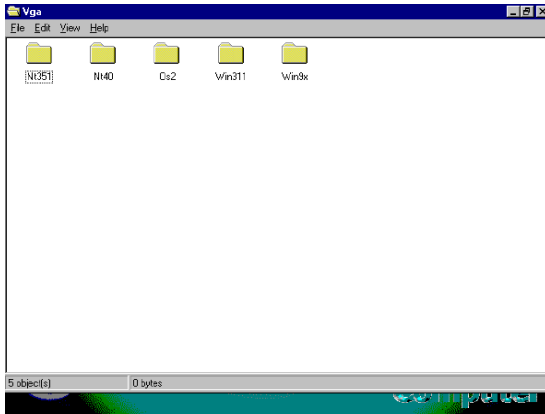
3. Click "MIC-3365".



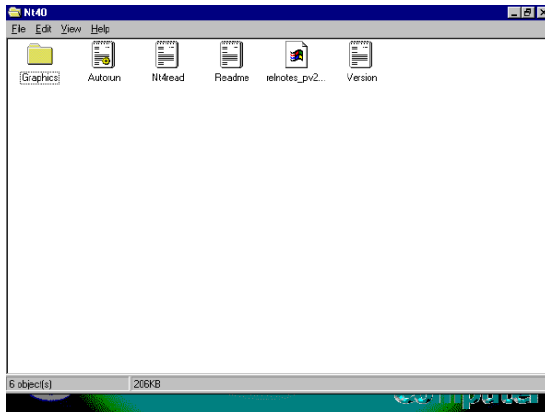
4. Under VGA Drivers menu, click "Browse" to choose the operating system used.



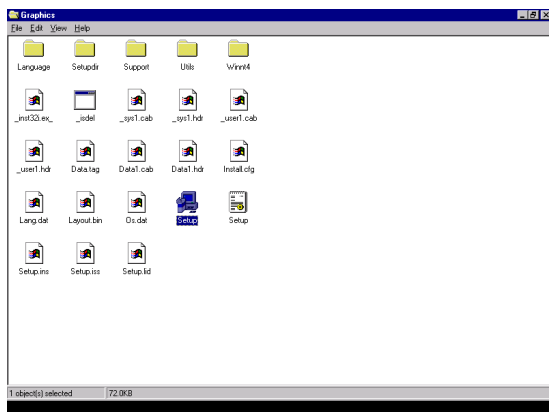
5. Click "Nt40".



6. Click "Graphics".



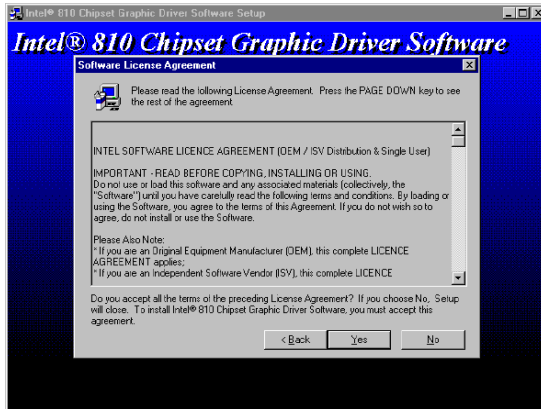
7. Click "Setup.exe".



8. Click "Next".



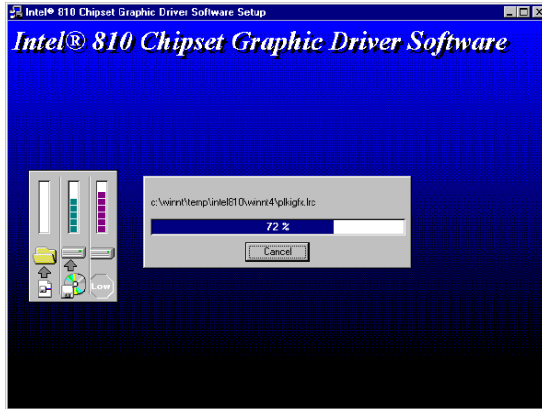
9. Click "Yes".



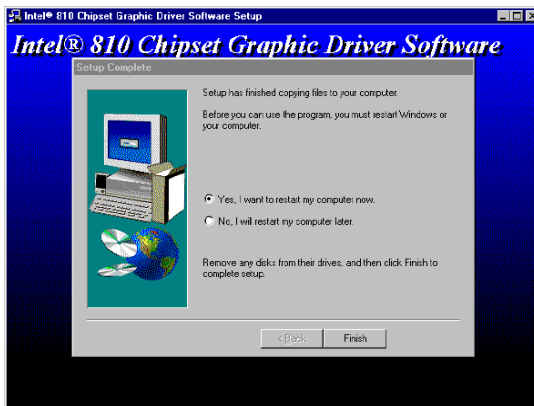
10. Click "Next" to install drivers.



11. Wait for installation to finish.



12. Click "Finish" to restart the computer and enable the changes to take effect.



CHAPTER
5

SCSI Software Configuration

5.1 Introduction

The MIC-3365 uses the Symbios SYM53C895 SCSI processor to provide an Ultra 2 SCSI interface on the rear transition board MIC-3302 via the J5 connector. The Ultra 2 SCSI interface has a data transfer rate up to 80 MB/s. The device can support cables up to 12-meter long and up to 16 LVD devices on a wide LVD (Low Voltage Differential) SCSI bus. Device drivers and utilities for DOS, Windows 95/98/NT, OS/2, SCO UNIX, UnixWare and NetWare are included in the utility CD-ROM disc.

5.2 Utility and Drivers

The utility user's guide and installation instructions are provided in the utility CD-ROM disc. The instructions are located in the directory \MIC3365\SCSI and include:

For DOS:

- \MIC3365\SCSI\DOS\DOS.TXT: Installation instructions for DOS
- \MIC3365\SCSI\DOS\INSTALL.EXE: Drivers for DOS

For Windows 95/98:

- \MIC3365\SCSI\WIN9X\WIN9598.TXT: Installation instructions for Windows 95/98
- \MIC3365\SCSI\WIN9X\SYMC8XX.INF: Drivers for Windows 95/98

For Windows NT:

- \MIC3365\SCSI\WINNT\WINNT.TXT: Installation instructions for Windows NT 4.0
- \MIC3365\SCSI\WINNT\OEMSETUP.INF: Drivers for Windows NT 4.0

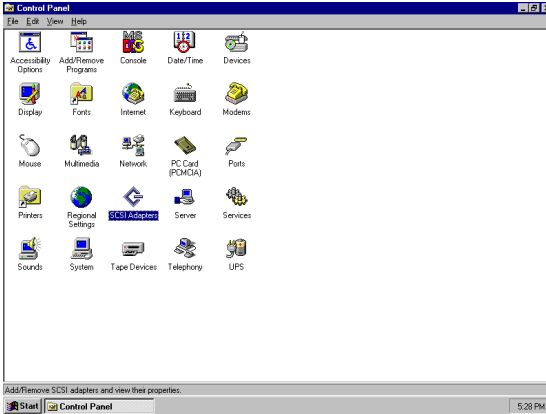
For OS/2:

- **\MIC3365\SCSI\OS2\OS2.TXT:** Installation instructions for OS2
- **\MIC3365\SCSI\OS2\SYM8XXPC.EXE,**
\MIC3365\SCSI\OS2\SYM_HIPC.EXE: Drivers for OS2

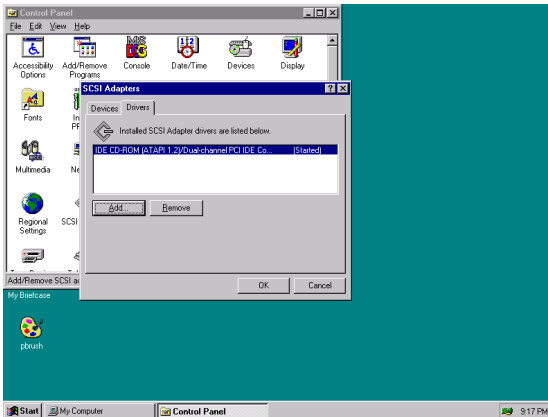
Note: The installation procedures below assume users' CD-ROM drive name is E.

5.3 Installation for Windows NT 4.0

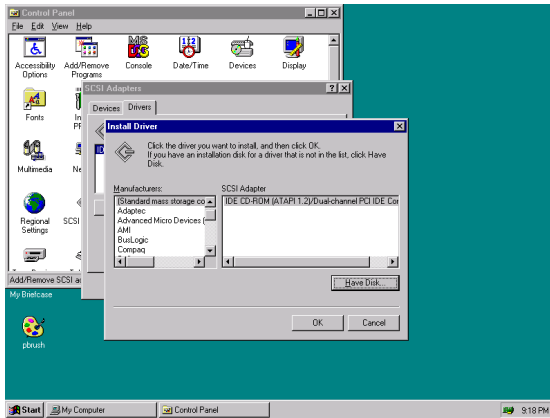
1. In the Windows NT screen, select "Start", click "Settings". Click the "Control Panel" item and choose "SCSI Adapters".



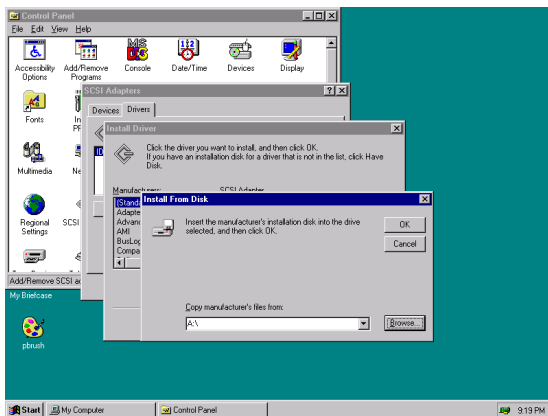
2. Click "Add".



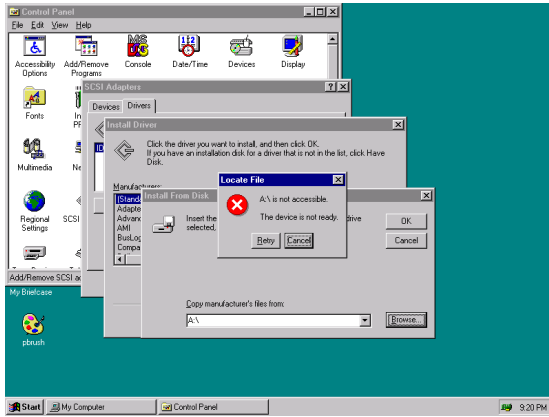
3. Click "Have Disk".



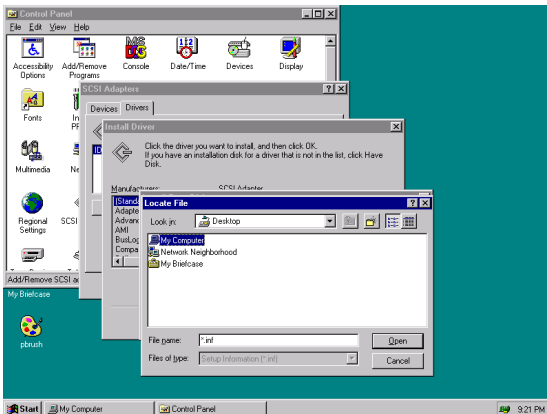
4. Click "Browse".



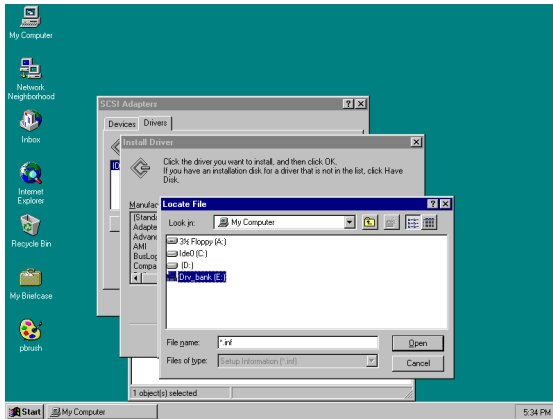
5. Click "Cancel".



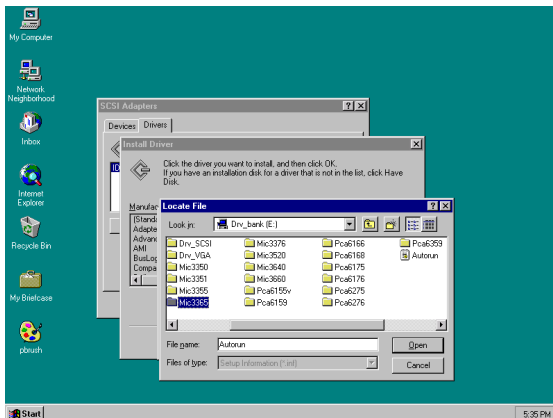
6. Click "My Computer".



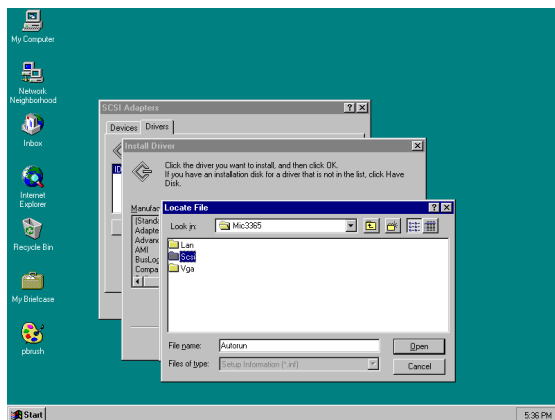
7. Click "Drv_Bank (E)".



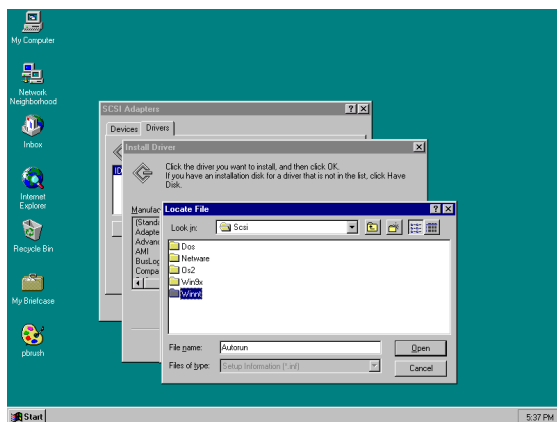
8. Click "MIC3365".



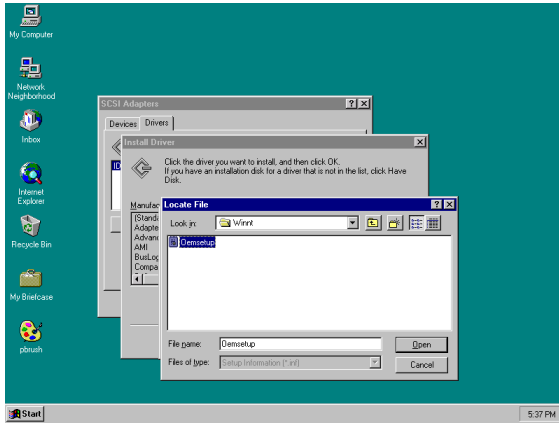
9. Click "SCSI".



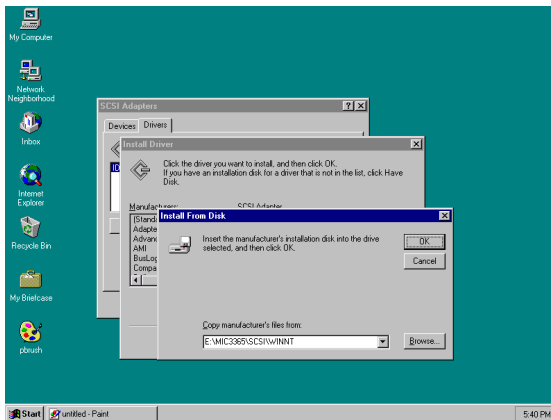
10. Click "Winnt".



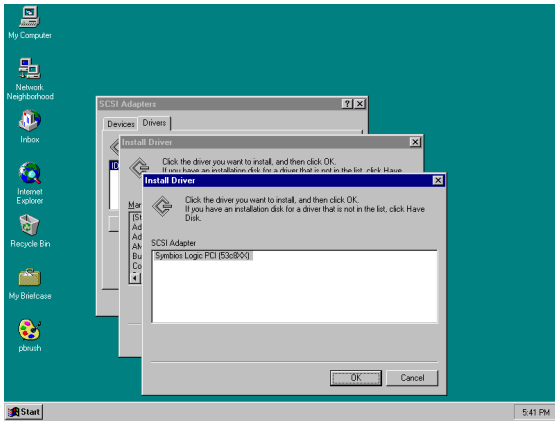
11. Click "Oemsetup".



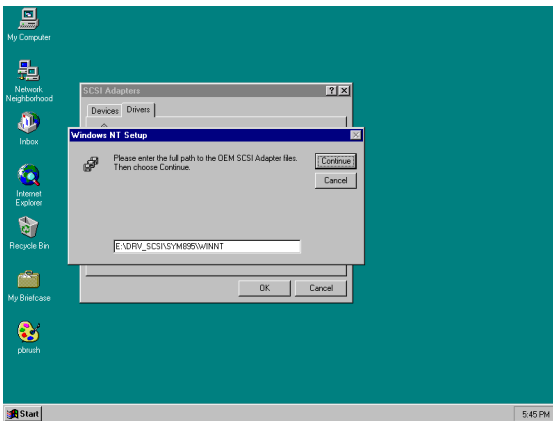
12. Click "OK".



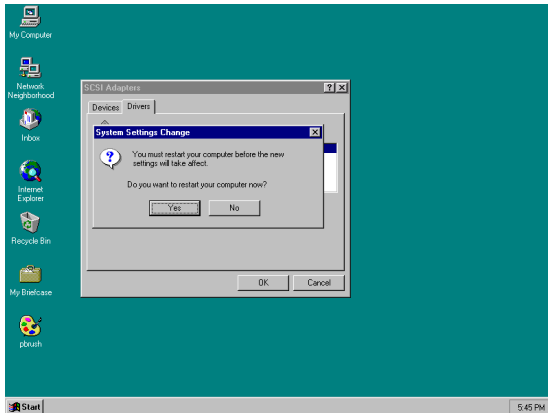
13. Click "OK".



14. Click "Continue".



13. Click "Yes" to restart the computer and enable the changes to take effect.



CHAPTER
6

Award BIOS Setup

6.1 Introduction

Award's BIOS ROM has a built-in Setup program that allows users to modify the basic system configuration. This type of information is stored in battery-backed CMOS so that it retains the Setup information when the power is turned off.

6.2 Entering Setup

Turn on the computer and check for the "patch code". If there is a number assigned to the patch code, it means that the BIOS supports your CPU.

If there is no number assigned to the patch code, please contact Advantech's application engineer to obtain an up-to-date patch code file. This will ensure that your CPU's system status is valid.

After ensuring that you have a number assigned to the patch code, press and you will immediately be allowed to enter Setup.

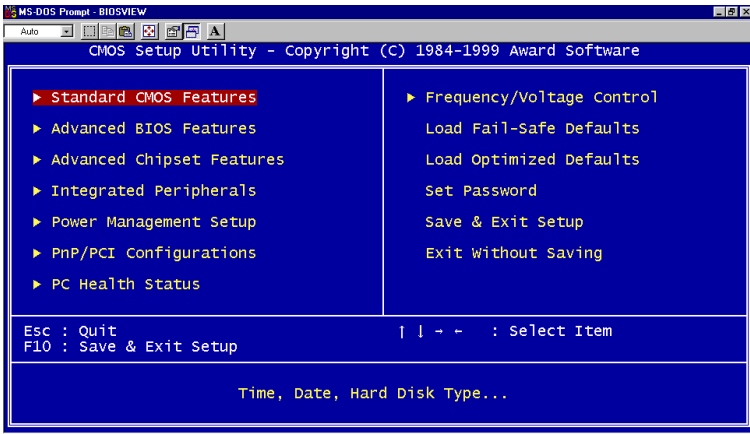


Figure 6-1: Initial Setup screen

6.3 Standard CMOS Features

Choose the "STANDARD CMOS FEATURES" option from the INITIAL SETUP Menu, and the screen below will be displayed. This standard setup menu allows users to configure system components such as date, time, hard disk drive, floppy drive, display, and memory.

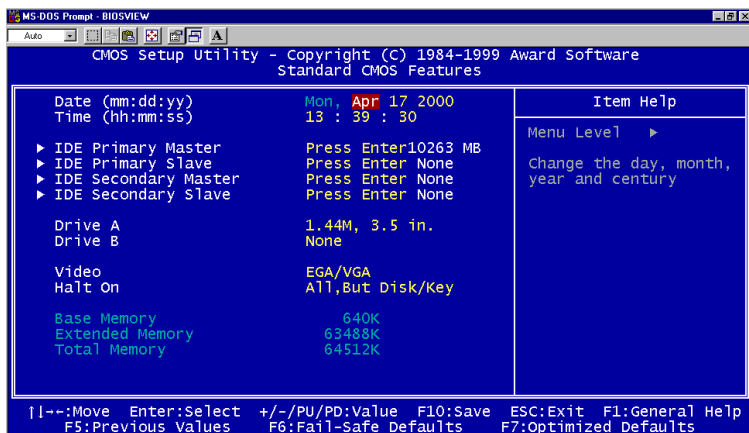


Figure 6-2: Standard CMOS Features screen

6.4 Advanced BIOS Features

The "ADVANCED BIOS FEATURES" screen will appear after choosing the ADVANCED BIOS FEATURES item from the INITIAL SETUP Menu. This screen allows users to configure the MIC-3365 according to their particular requirements.

Below are some major items that are provided in the ADVANCED BIOS FEATURES screen:

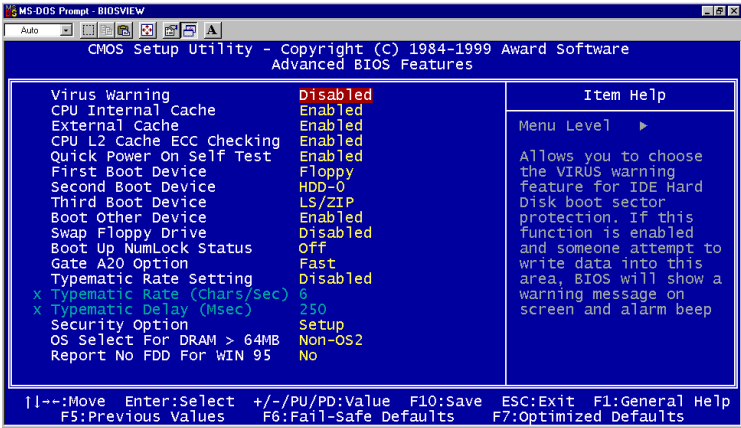


Figure 6-3: Advanced BIOS Features screen

Virus Warning

During and after the system boots up, any attempt to write to the boot sector or partition table of the hard disk drive will halt the system. If this happens, a warning message will be displayed. You can run the anti-virus program to locate the problem.

If Virus Warning is Disabled, no warning message will appear if anything attempts to access the boot sector or hard disk partition.

CPU Internal Cache/External Cache

Depending on the CPU/chipset design, these options can speed up memory access when enabled.

CPU L2 Cache ECC Checking

This option controls the ECC capability in the CPU level 2 cache.

Quick Power On Self Test

This option speeds up the Power-On Self Test (POST) conducted as soon as the computer is turned on. When enabled, the BIOS shortens or skips some of the items during the test. When disabled, normal POST procedures resume.

First/Second/Third Boot Devices

These options determines the boot up sequence. The default value for the first, second, and third devices options are "Floppy, HDD-0, and LS/ZIP" respectively. The following options are available:

- Floppy: Computer will boot from the floppy disk drive
- LS/ZIP: Computer will boot from the LS or ZIP drive
- HDD-0: Computer will boot from the primary master hard disc drive
- SCSI: Computer will boot from the SCSI drive
- CD-ROM: Computer will boot from the CD-ROM drive
- HDD-1: Computer will boot from the primary slave hard disk drive
- HDD-2: Computer will boot from the secondary master hard disk drive
- HDD-3: Computer will boot from the secondary slave hard disk drive
- Disabled: Computer will boot from other devices such as DOC 2000 or CompactFlash

Boot Other Devices

This option allows users to boot from other connected devices such as DOC 2000 or CompactFlash®

Swap Floppy Drive

If the system has two floppy disk drives, choose enable to assign physical drive B to logical drive A, and vice versa.

Gate A20 option

Normal	The A20 signal is controlled by the keyboard controller or chipset hardware
Fast	Default: Fast. The A20 signal is controlled by Port 92 or by a specific chipset method.

Typematic Rate Setting

The typematic rate determines the characters per second accepted by the computer. Typematic Rate setting enables or disables the typematic rate.

Typematic Rate (Char/Sec)

BIOS accepts the following input values (character/second) for Typematic Rate: 6, 8, 10, 12, 15, 20, 24, 30.

Typematic Delay (msec)

When holding down a key, the Typematic Delay is the time interval between the appearance of the first and second characters. The input values (msec) for this category are: 250, 500, 750, 1000.

Security Option

This setting determines whether the system will boot if the password is denied, while limiting access to Setup.

System The system will not boot, and access to Setup will be denied if the correct password is not entered at the prompt.

Setup The system will boot, but access to Setup will be denied if the correct password is not entered at the prompt.

Note: To disable security, select SET PASSWORD in the INITIAL SETUP menu. At this point, you will be asked to enter a password. Simply hit the <ENTER> key to disable security. When security is disabled, the system will boot, and you can enter Setup freely.

OS Select for DRAM>64 MB

This setting is for use under the OS/2 operating system.

Report No FDD For WIN 95

This option allows the MIC-3365 to report a warning message if the system detected no FDD in Windows 95 environment.

6.5 CHIPSET Features Setup

Choose the "ADVANCED CHIPSET FEATURES" option from the INITIAL SETUP Menu, and the screen below will be displayed. This sample screen contains the manufacturer's default values for the MIC-3365.

6.6 Integrated Peripherals

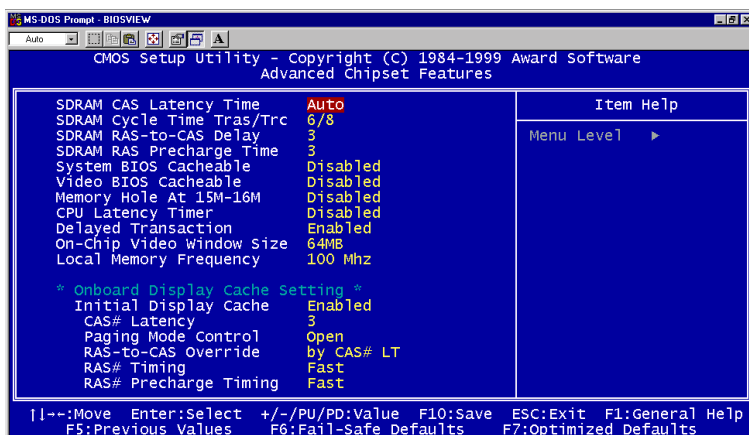


Figure 6-4: Advanced Chipset Features screen

6.7 Power Management Setup

The power management setup controls the CPU cards' "green" features. The following screen shows the manufacturer's default values.

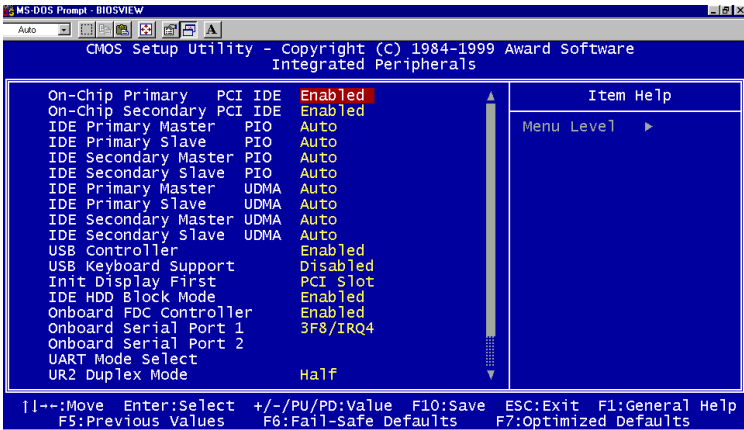


Figure 6-5: Integrated Peripherals screen

Note: If you enable the IDE HDD block mode, the enhanced IDE driver will be enabled.

6.8 PnP/PCI Configurations

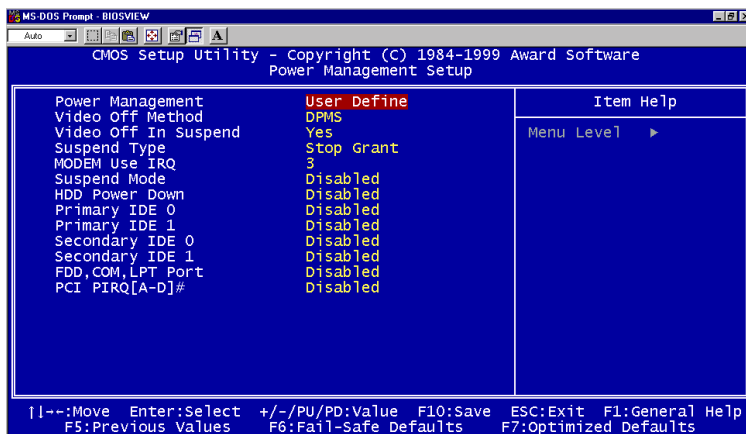


Figure 6-6: Power Management Setup screen

Power Management

This option allows you to determine if the values in power management are disabled, user-defined, or predefined.

HDD Power Management

You can choose to turn the HDD off after one of the time intervals listed, or when the system is in Suspend mode. If in a power saving mode, any access to the HDD will wake it up.

Note: The HDD will not power down if the Power Management option is disabled.

6.9 Load Optimized Defaults

"LOAD OPTIMIZED DEFAULTS" loads the most appropriate values of the system parameters for maximum performance.

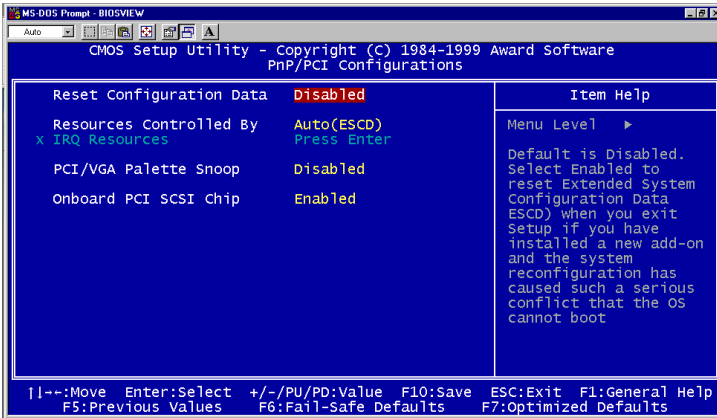


Figure 6-7: PnP/PCI Configurations screen

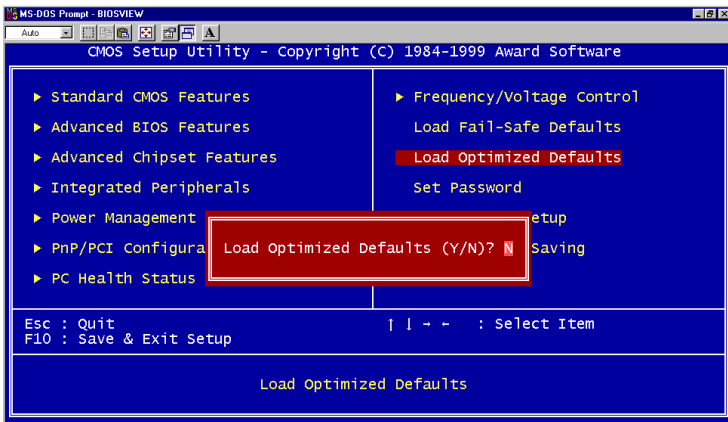


Figure 6-8: Load Optimized Defaults screen

6.10 Set Password

To change, confirm, or disable the password, choose the "SET PASSWORD" option from the INITIAL SETUP menu, and press [Enter]. The password can be at most 8 characters long.

Remember to enable this feature. You must first select the "SECURITY OPTION" in the ADVANCED BIOS FEATURES to be either "Setup" or "System." Pressing [Enter] again without typing any characters can disable the password setting function.

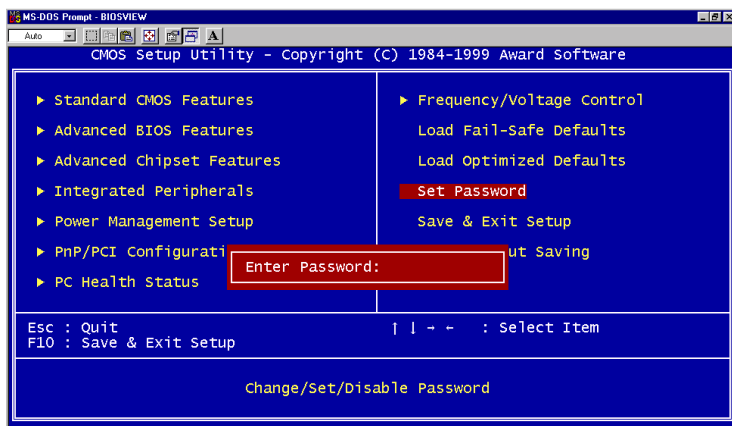


Figure 6-9: Set Password screen

6.11 Save & Exit Setup

If you select this and press the [Enter] key, the values entered in the setup utilities will be recorded in the CMOS memory of the chipset. The microprocessor will check this every time you turn your system on and compare this to what it finds as it checks the system. This record is required for the system to operate.

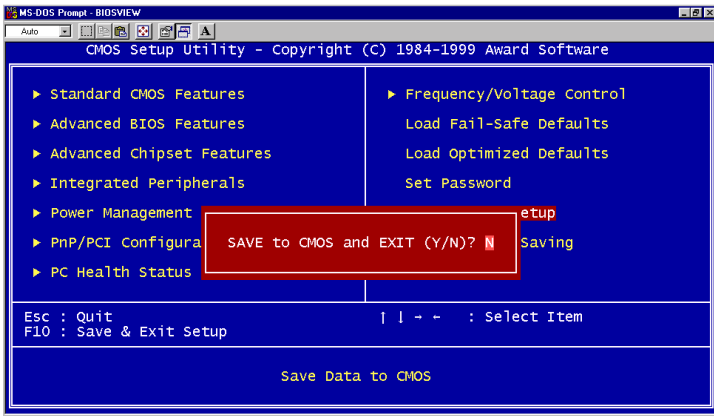


Figure 6-10: Save & Exit Setup screen

6.12 Exit Without Saving

Selecting this option and pressing the [Enter] key lets you exit the Setup program without recording any new values or changing old ones.

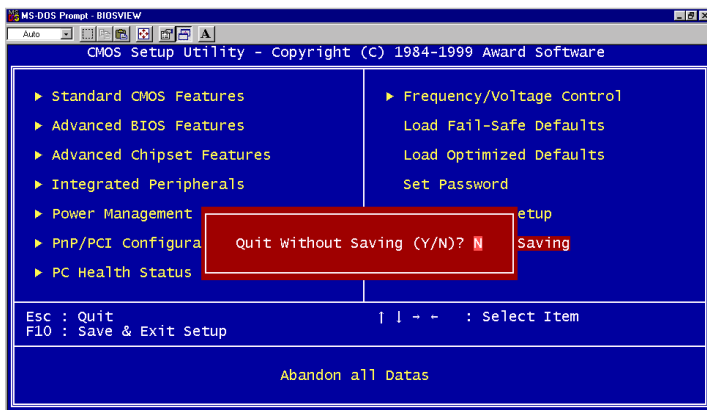


Figure 6-11: Exit Without Saving screen

APPENDIX
A

Programming the Watchdog Timer

A.1 Programming the Watchdog Timer

To program the watchdog timer, you must write a program which writes a value to I/O port address 444 (hex). This output value represents time interval. The value range is from 01 (hex) to 3F (hex), and the related time interval is 1 sec. to 63 sec.

Data	Time Interval
01	1 sec.
02	2 sec.
03	3 sec.
04	4 sec.
•	•
•	•
•	•
3F	63 sec.

After data entry, your program must refresh the watchdog timer by rewriting the I/O port 444 (hex) while simultaneously setting it. When you want to disable the watchdog timer, your program should read I/O port 444 (hex).

The following example shows how you might program the watchdog timer in BASIC:

```
10      REM Watchdog timer example program
20      OUT &H443, data REM Start and restart the watchdog
30      GOSUB 1000 REM Your application task #1,
40      OUT &H443, data REM Reset the timer
50      GOSUB 2000 REM Your application task #2,
60      OUT &H443, data REM Reset the timer
70      X=INP (&H443) REM, Disable the watchdog timer
80      END

1000    REM Subroutine #1, your application task
      .
      .
      .
1070    RETURN
2000    REM Subroutine #2, your application task
      .
      .
      .
2090    RETURN
```


APPENDIX **B**

Pin Assignments

B.1 VGA Display Connector (CN2)

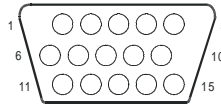


Table B-1: MIC-3365 CRT display connector

Pin	Signal	Pin	Signal
1	RED	9	VGAVCC
2	GREEN	10	GND
3	BLUE	11	N/C
4	N/C	12	SDA
5	GND	13	HSYNC
6	GND	14	VSYNC
7	GND	15	SCL
8	GND		

B.2 Keyboard and Mouse Connector (CN7)

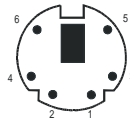


Table B-2: MIC-3365 keyboard connector

Pin	Signal
1	KDAT
2	MDAT
3	GND
4	VCC
5	KCLK
6	MCLK

B.3 COM1 and COM2 Serial Port (CN13 and CN6)

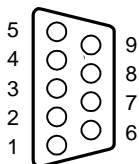


Table B-3: MIC-3365 COM1 and COM2 serial port

Pin	COM1 Signal	Pin	COM2 Signal
1	NRLSD1	1	NRLSD2
2	NRX1	2	NRX2
3	NTX1	3	NTX2
4	NDTR1	4	NDTR2
5	GND	5	GND
6	NDSR1	6	NDSR2
7	NRTS1	7	NRTS2
8	NCTS1	8	NCTS2
9	NRI1	9	NRI2

B.4 USB Connector (CN8)

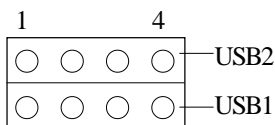


Table B-4: MIC-3365 USB1/USB2 connector

Pin	USB1 Signal	Pin	USB2 Signal
1	VCC	1	VCC
2	USBD0-	2	USBD1-
3	USBD0+	3	USBD1+
4	GND	4	GND

B.5 Ethernet RJ-45 Connector (CN4 and CN5)

Table B-5: MIC-3365 Ethernet RJ-45 connector

Pin	Signal
1	TX+
2	TX-
3	RX+
4	N/C
5	N/C
6	RX-
7	N/C
8	N/C

B.6 Parallel Port Connector (CN1)

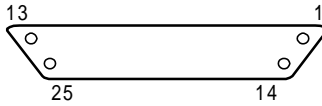


Table B-6: MIC-3365 parallel port connector

Pin	Signal
1	STB#
2	PTD0
3	PTD1
4	PTD2
5	PTD3
6	PTD4
7	PTD5
8	PTD6
9	PTD7
10	ACK#
11	BUSY
12	PE
13	SLCT
14	AFD#
15	ERR#
16	INIT#
17	SLIN#
18	GND
19	GND
20	GND
21	GND
22	GND
23	GND
24	GND
25	GND

B.7 IDE Connector (CN12)

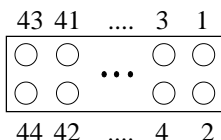


Table B-7: MIC-3365 IDE connector

Pin	Signal	Pin	Signal
1	IDE RESET#	2	GND
3	DATA 7	4	DATA 8
5	DATA 6	6	DATA 9
7	DATA 5	8	DATA 10
9	DATA 4	10	DATA 11
11	DATA 3	12	DATA 12
13	DATA 2	14	DATA 13
15	DATA 1	16	DATA 14
17	DATA 0	18	DATA 15
19	GND	20	N/C
21	N/C	22	GND
23	IO WRITE#	24	GND
25	IO READ#	26	GND
27	IO CHANNEL READY	28	N/C
29	HDACK#	30	GND
31	IRQ14	32	N/C
33	ADDR 1	34	P66DET
35	ADDR 0	36	ADDR 2
37	HARD DISK SELECT 0#	38	HARD DISK SELECT 1#
39	IDE ACTIVE#	40	GND
41	VCC	42	VCC
43	GND	44	N/C

low active

Note: The MIC-3665 supports DMA/66 HDD.

B.8 Floppy Drive Connector (CN11)

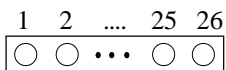


Table B-8: MIC-3351 floppy drive connector

Pin	Signal	Pin	Signal
1	VCC	2	INDEX#
3	VCC	4	DSA#
5	VCC	6	DSKCHG
7	N/C	8	N/C
9	N/C	10	MOA#
11	N/C	12	DIR#
13	DEVSEL#	14	STEP#
15	GND	16	WDATA#
17	GND	18	WGATE#
19	GND	20	TRAK0#
21	GND	22	WPT#
23	GND	24	RDATA#
25	GND	26	HEAD#

low active

B.9 System I/O Ports

Table B-9: System I/O ports

Addr. range (Hex)	Device
000 - 00F	DMA controller
020 - 021	Interrupt controller
040 - 043	8254 timer
060	IBM Enhanced keyboard
061	Speaker
070 - 071	Real-time clock
081 - 083	DMA controller
087	DMA controller
089 - 08B	DMA controller
08F - 091	DMA controller
0A0 - 0A1	Interrupt controller
0C0 - 0F0	DMA controller
0F0 - 0FF	Math coprocessor
170 - 177	IDE controller
1F0 - 1F7	IDE controller
2F8 - 2FF	UM2
376	IDE controller
378 - 37A	LPT1
3B0 - 3BB	VGA adapter
3C0 - 3DF	VGA adapter
3F0 - 3F5	FDD controller
3F6	IDE controller
3F7	FDD controller
3F8 - 3FF	Serial port 1
480 - 48F	PCI bus
4D0 - 4D1	PCI bus
778 - 77F	ELP printer port
CF8 - CFF	PCI bus
4000 - 40F7	PCI bus
5000 - 501F	PCI bus
C000 - CFFF	PCI-to-PCI bridge
D000 - D01E	USB controller
F000 - F00E	IDE controller

B.10 DMA Channel Assignments

Table B-10: DMA channel assignments

Channel	Function
0	Available
1	Available
2	Floppy disk (8-bit transfer)
3	LPT1
4	Cascade for DMA controller 1
5	Available
6	Available
7	Available

B.11 Interrupt Assignments

Table B-11: Interrupt assignments

Interrupt#	Interrupt source
IRQ 0	Interval timer
IRQ 1	Keyboard
IRQ 2	Interrupt from controller 2 (cascade)
IRQ 8	Real-time clock
IRQ 9	Cascaded to INT 0A (IRQ 2)
IRQ 10	Available
IRQ 11	Available
IRQ 12	PS/2 mouse
IRQ 13	INT from co-processor
IRQ 14	Fixed disk controller
IRQ 15	Available
IRQ 3	Serial communication port 2
IRQ 4	Serial communication port 1
IRQ 5	Available
IRQ 6	Diskette controller (FDC)
IRQ 7	Parallel port 1 (print port)

B.12 1st MB Memory Map

Table B-12: 1st MB memory map

Addr. range (Hex)	Device
F000h - FFFFh	System ROM
CC00h - EFFFh	Unused
CA00h - CBFFh	Used
C000h - C7FFh	Expansion ROM
B800h - BFFFh	CGA/EGA/VGA text
B000h - B7FFh	Unused
A000h - AFFFh	EGA/VGA graphics
0000h - 9FFFh	Base memory

B.13 J1 connector pin assignments

Table B-13: J1 connector pin assignments

Pin	Row A	Row B	Row C	Row D	Row E
25	+5V	REQ64#	ENUM#	N/C	+5V
24	AD1	+5V	N/C	AD0	ACK64#
23	N/C	AD4	AD3	+5V	AD2
22	AD7	GND	N/C	AD6	AD5
21	N/C	AD9	AD8	GND	C/BE0#
20	AD12	GND	N/C	AD11	AD10
19	N/C	AD15	AD14	GND	AD13
18	SERR#	GND	N/C	PAR	C/BE1#
17	N/C	SDONE	SBO#	GND	PERR#
16	DEVSEL#	GND	N/C	STOP#	LOCK#
15	N/C	FRAME#	IRDY#	GND	TRDY#
14					
13			KEY	AREA	
12					
11	AD18	AD17	AD16	GND	C/BE2#
10	AD21	GND	N/C	AD20	AD19
9	C/BE3#	N/C	AD23	GND	AD22
8	AD26	GND	N/C	AD25	AD24
7	AD30	AD29	AD28	GND	AD27
6	REQ#	GND	N/C	CLK	AD31
5	N/C	N/C	RST#	GND	GNT#
4	N/C	GND	N/C	INTP	INTS
3	INTA#	INTB#	INTC#	+5V	INTD#
2	TCK	+5V	TMS	N/C	TDI
1	+5V	N/C	TRST#	+12V	+5V
# low active					

B.14 J2 connector pin assignments

Table B-14: J2 connector pin assignments

Pin	Row A	Row B	Row C	Row D	Row E
47	N/C	N/C	N/C	N/C	N/C
46	N/C	GND	N/C	N/C	N/C
45	N/C	N/C	N/C	GND	N/C
44	N/C	GND	N/C	N/C	N/C
43	N/C	N/C	N/C	GND	N/C
42	N/C	GND	PRST#	REQ6#	GNT6
41	N/C	N/C	DEG#	GND	N/C
40	N/C	GND	FAL#	REQ5#	GNT5
39	N/C	N/C	N/C	GND	N/C
38	N/C	GND	N/C	N/C	N/C
37	N/C	N/C	N/C	GND	N/C
36	N/C	GND	N/C	N/C	N/C
35	N/C	N/C	N/C	GND	N/C
34	N/C	GND	N/C	N/C	N/C
33	N/C	N/C	N/C	GND	N/C
32	N/C	GND	N/C	N/C	N/C
31	N/C	N/C	N/C	GND	N/C
30	N/C	GND	N/C	N/C	N/C
29	N/C	N/C	N/C	GND	N/C
28	CLK4	GND	GNT3	REQ4#	GNT4
27	CKL2	CLK3	N/C	GNT2	REQ3#
26	CLK1	GND	REQ1#	GNT1	REQ2#

B.15 J3 connector pin assignments

Table B-15: J3 connector pin assignments

Pin	Row A	Row B	Row C	Row D	Row E
19	HDBD3	HDBD6	HDBD2	HDBD10	HDBD14
18	HDBD8	HDBD5	HDBD1	HDBD11	HDBD15
17	HDBD9	HDBD4	HDBD0	HDBD12	HDBD13
16	HDBD7	ICSOB#	IIOB#	ICS1B#	HDRDY8
15	HDBDRQ	IDACKB#	HDBSA2	HDBIRQ	IIOWB#
14	NRTS1	NDSR1	HDBSA1	GND	HDBSA0
13	NR11	NCTS1	NTX1	NRX1	NRLSD1
12	ID0	ID2	ID4	ID7	NDTR1
11	ID1	ID3	ID8	ID6	ID12
10	ID5	ID9	ID10	ID11	ID13
9	ID15	ID14	HDRQ#	HCS3#	HIOR#
8	HIRQ	HACK#	VCC	HDA2	HIOW#
7	N/A	GND	HRST1#	HRDY	HCS1#
6	N/A	VCC	GND	HDA0	HDA1
5	VCC	N/A	S66DET	N/A	N/A
4	KDAT	KCLK	MDAT	MCLK	P66DET
3	DSKCHG#	MOA#	STEP#	HEAD#	TRAK0#
2	DSA#	MOB#	RWC#	RDATA#	WP#
1	INDEX#	DSB#	DIR#	WE#	WD#

: Low active

B.16 J4 connector pin assignments

Table B-16: J4 connector pin assignments

Pin	Row A	Row B	Row C	Row D	Row E
25	LANTX-2	LANTX-	USBV1	USBV0	UD1+
24	LANTX+2	LANTX+	N/A	UD1-	UD0-
23	GND	GND	N/A	N/A	UD0+
22	LANRX-2	LANRX-	N/A	N/A	COMDTR2
21	LANRX+2	LANRX+	N/A	N/A	COMRTS2
20	GND	GND	N/A	N/A	COMCTS2
19	N/A	N/A	N/A	N/A	COMTX2
18	N/A	N/A	N/A	N/A	COMLSD2
17	N/A	N/A	N/A	N/A	COMDSR2
16	N/A	N/A	N/A	N/A	COMRI2
15	N/A	N/A	N/A	N/A	COMRX2
12-14	Key Area				
11	VCC	N/A	N/A	N/A	N/A
10	VCC	N/A	N/A	N/A	N/A
9	VCC	N/A	N/A	N/A	N/A
8	VCC	N/A	N/A	N/A	N/A
7	N/A	N/A	N/A	N/A	FFVFC
6	N/A	N/A	N/A	PDDCCLK	PDDCDAT
5	N/A	N/A	N/A	DCK	PEDGE
4	N/A	N/A	N/A	VS	TX2+
3	N/A	N/A	HS	DAT	TX2-
2	B	G	R	TX0-	TX0+
1	TX1+	TX1-	GND	TXC+	TXC-

B.17 J5 connector pin assignments

Table B-17: J5 connector pin assignments

Pin	Row A	Row B	Row C	Row D	Row E
22	LANRX+	LANRX-	LANTX+	LANTX-	LANRX+2
21	VCC	VCC	LANTX+2	LANTX-2	LANRX-2
20	N/A	N/A	N/A	N/A	VCC
19	N/A	N/A	VCC	N/A	N/A
18	N/A	N/A	N/A	N/A	N/A
17	N/A	N/A	N/A	N/A	N/A
16	N/A	N/A	N/A	N/A	N/A
15	N/A	N/A	N/A	N/A	N/A
14	N/A	N/A	N/A	N/A	N/A
13	N/A	N/A	N/A	N/A	SDP+1
12	SD+12	N/A	SD+14	SD-14	SDP-1
11	SD-12	SD+13	SD-13	SD+15	SD-15
10	DIFS	AUTO	TPWEX	SD+0	SD-0
9	SD-5	SD+5	SD+2	SD-1	SD+1
8	SD+6	SD-6	SD-2	SD+3	SD-3
7	TPWEX	TPWEX	TPWEX	SD-4	SD+4
6	SACK+	SDP+0	SDP-0	SD+7	SD-7
5	SACK-	SBSY+	SBSY-	SATN+	SATN-
4	SD+10	SRST+	SRST-	SMSG+	SMSG-
3	SD-10	SCD-	SCD+	SSEL+	SSEL-
2	SD-11	SD+9	SD-8	SREQ-	SREQ+
1	SD+11	SD-9	SD+8	SIO-	SIO+

Free Manuals Download Website

<http://myh66.com>

<http://usermanuals.us>

<http://www.somanuals.com>

<http://www.4manuals.cc>

<http://www.manual-lib.com>

<http://www.404manual.com>

<http://www.luxmanual.com>

<http://aubethermostatmanual.com>

Golf course search by state

<http://golfingnear.com>

Email search by domain

<http://emailbydomain.com>

Auto manuals search

<http://auto.somanuals.com>

TV manuals search

<http://tv.somanuals.com>