



External Multi-Touch Module

EM215

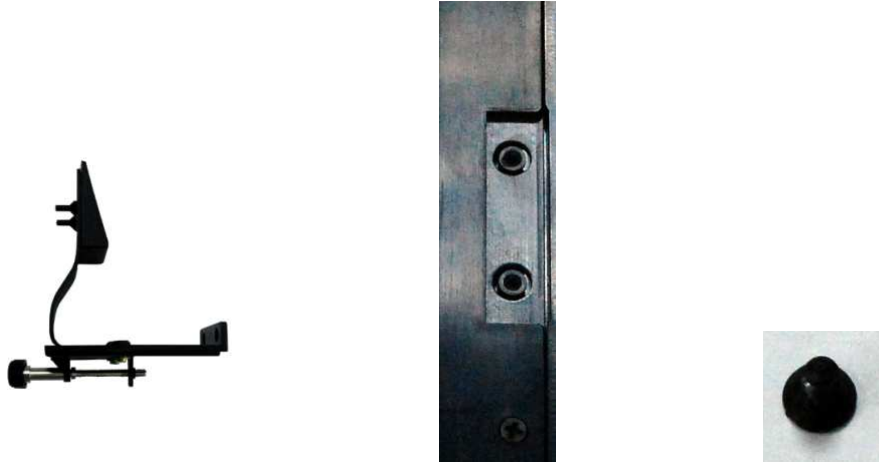


Contents

Hardware Installation.....	3
Driver Installation - Windows 7.....	5
Driver Installation – Windows XP/ Vista.....	6
Accessories.....	9

Hardware Installation :

(a) To install the clips stably, please screw up the clips by the bundled screws.



(b) To loosen the clip by adjusting the screw, then put EM215 on monitor. Your monitor will look like the picture below.



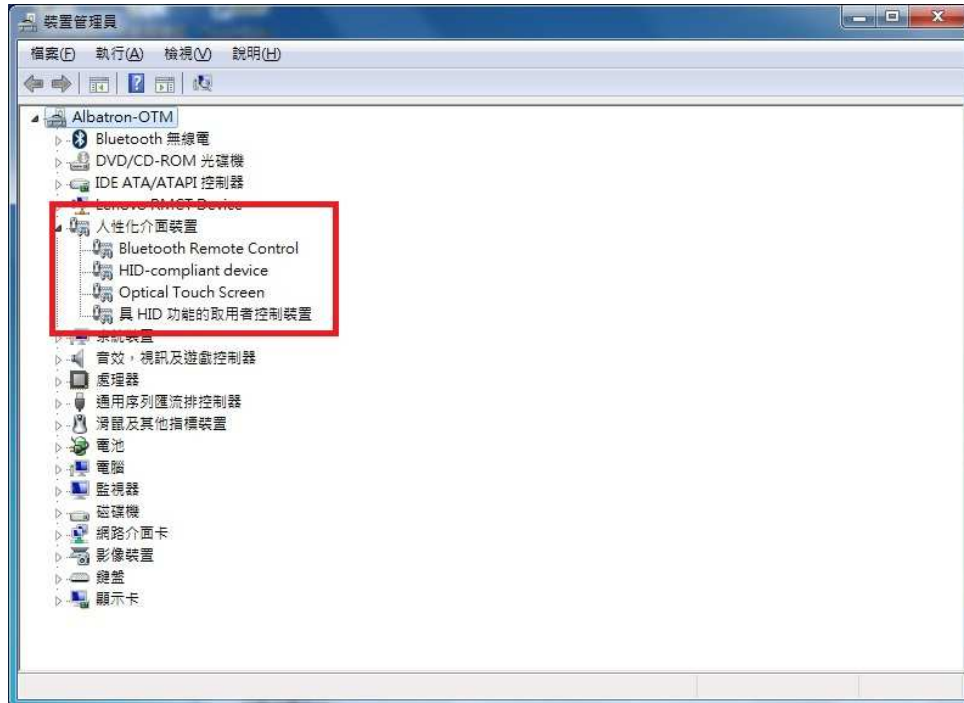


(c) Connect EM215 and PC by bundled USB cable (type A connector to PC, type B connector to EM215).



Driver Installation - Windows 7 :

EM215 will be recognized automatically under Windows 7, there is no need to install driver.



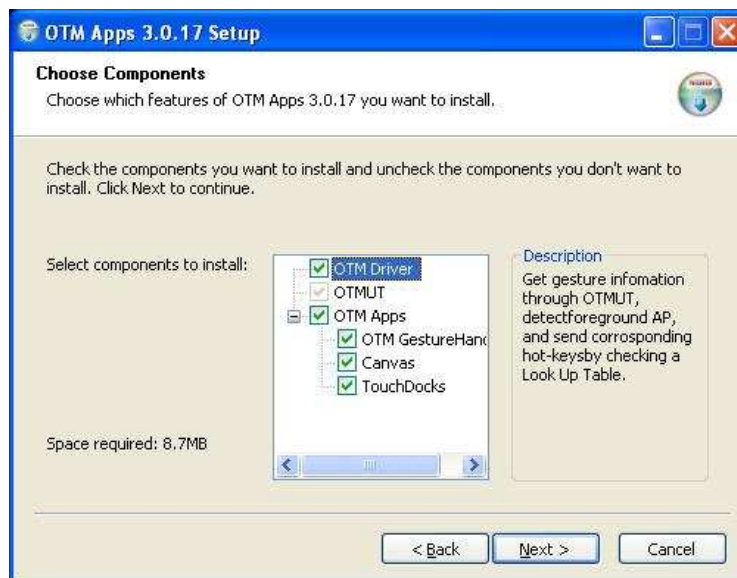
Driver Installation – Windows XP/ Vista:

You should install driver for enabling single touch under Windows XP / VISTA.

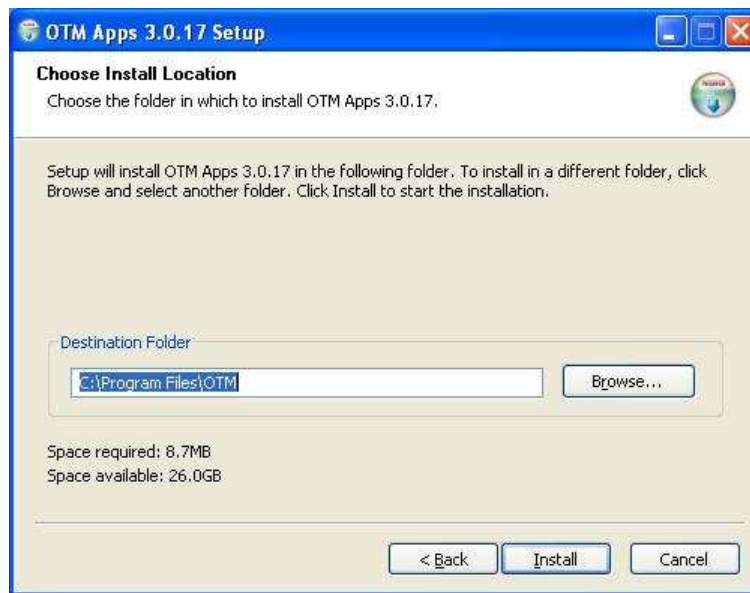
Step 1: After double clicking the driver pack, you'll see the window as below. To click "Next" to continue.



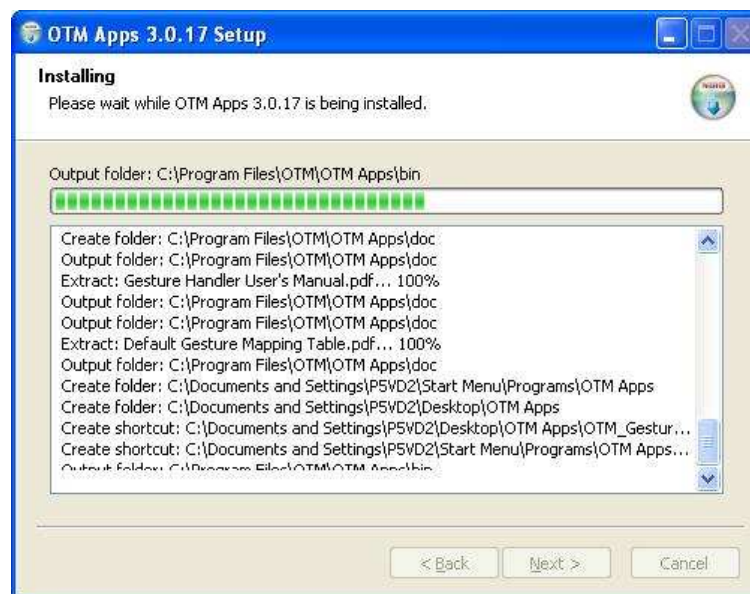
Step 2: Select components to install



Step 3: Choose the folder to install driver



Step 4: Installing



Step 5: Finish installation

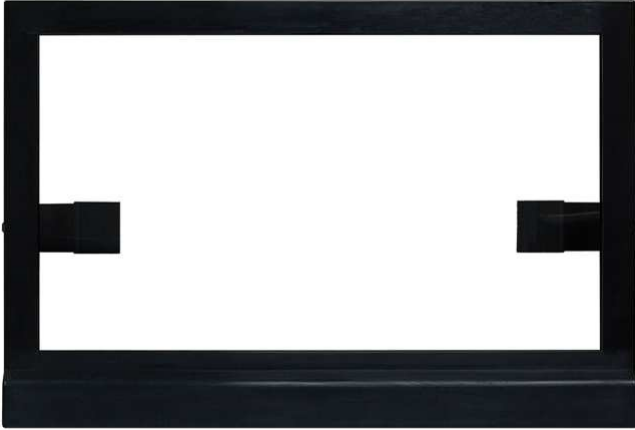


Download Windows XP/ Vista driver via the link below:

http://www.albatron.com.tw/taiwan/service/download/download_index.asp

Accessories :

(a) EM215 External Multi-Touch Module :



(b) USB Cable (Type A to Type B) :



(c) Clips x 2 :



(d) Screws x 4



Free Manuals Download Website

<http://myh66.com>

<http://usermanuals.us>

<http://www.somanuals.com>

<http://www.4manuals.cc>

<http://www.manual-lib.com>

<http://www.404manual.com>

<http://www.luxmanual.com>

<http://aubethermostatmanual.com>

Golf course search by state

<http://golfingnear.com>

Email search by domain

<http://emailbydomain.com>

Auto manuals search

<http://auto.somanuals.com>

TV manuals search

<http://tv.somanuals.com>