

# TWO PORT DVI KVM SWITCH



## USER MANUAL

### CS-1262

Read this guide thoroughly and follow the installation and operation procedures carefully in order to prevent any damage to the unit and/or any devices that connect to it.

This package contains:

- 1 CS-1262 Two Port DVI + Audio KVM Switch
- 2 Custom KVM Cables (Part No. 2L-7D02P)
- 1 Power Adapter (DC 5.3V; 2.4A)
- 1 User Manual
- 1 Quick Start Guide

If anything is damaged or missing, contact your dealer.

© Copyright 2004 - 2005 ATEN® International Co., Ltd.  
Manual Part No. PAPE-1259-100G  
Printed in Taiwan 07/2005

All brand names and trademarks are the registered property of their respective owners.

2005-07-01

**Note:** This equipment has been tested and found to comply with the limits for a Class B digital device, pursuant to Part 15 of the FCC Rules. These limits are designed to provide reasonable protection against harmful interference in a residential installation. This equipment generates, uses and can radiate radio frequency energy, and if not installed and used in accordance with the instruction manual, may cause interference to radio communications. However, there is no guarantee that interference will not occur in a particular installation. If this equipment does cause harmful interference to radio or television reception, which can be determined by turning the equipment off and on, the user is encouraged to try to correct the interference by one or more of the following measures:

- ◆ Reorient or relocate the receiving antenna;
- ◆ Increase the separation between the equipment and receiver;
- ◆ Connect the equipment into an outlet on a circuit different from that which the receiver is connected;
- ◆ Consult the dealer or an experienced radio/television technician for help.



2005-07-01

## OVERVIEW

The Master View CS-1262 DVI KVM Switch improves on previous KVM Switch designs by incorporating DVI video and audio. Now, two computers can be accessed and controlled from a single PS/2 keyboard, DVI monitor, and PS/2 mouse console.

DVI (Digital Visual Interface) supports both digital video input (flat panel displays, data projectors, plasma displays, digital TVs and set-top boxes) and analog video input (traditional monitors and TVs).

The CS-1262 is audio enabled. A single microphone can provide audio input to each of the computers, and you can listen to the audio output of each computer on a single set of speakers (on a one-at-a-time basis). With the CS-1262's independent (asynchronous) switching feature, you can even have the KVM focus on one computer while the audio focus is on the other.

Setup is fast and easy; simply plug the cables into their appropriate ports. There are no installation routines, and no software to configure.

There are two convenient methods to switch the KVM/Audio focus between the computers: manually, with the push button port selection switches located on the unit's front panel; and with *hotkey* combinations entered from the keyboard.

There is no better way to save time and money than with a Master View CS-1262 installation. Since a single console manages all of the computers, the CS-1262 setup: eliminates the expense of having to purchase separate console components for each computer; saves all the space those extra components would take up; saves on energy costs; and eliminates the inconvenience and wasted effort involved in constantly moving from one computer to another.

## **FEATURES**

- ◆ One console controls two computers
- ◆ DVI digital and analog monitor support - fully compliant with the DVI specification
- ◆ Audio enabled
- ◆ Easy to install - no software required - connecting cables to the computers is all it takes
- ◆ Easy to operate - manual and hotkey computer selection - Auto Scan function to monitor computer operation
- ◆ The KVM and audio focus can be switched together or separately (asynchronous switching)
- ◆ LED display for easy status monitoring
- ◆ Hot pluggable - add or remove computers for maintenance without powering down the switch
- ◆ Keyboard and mouse emulation for error free computer booting
- ◆ Superior video quality - up to 1600 x 1200; DDC2B
- ◆ Compatible with all PC compatible operating platforms

## HARDWARE REQUIREMENTS

### CONSOLE

- ◆ A DVI monitor
- ◆ A PS/2 mouse
- ◆ A PS/2 keyboard

### COMPUTERS

The following equipment must be installed on each computer that is to be connected to the system:

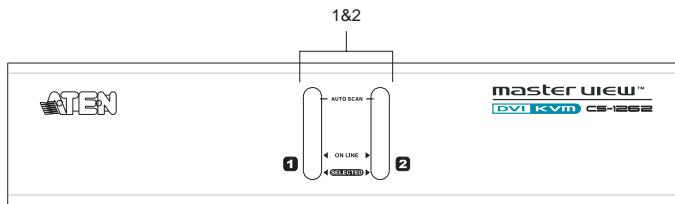
- ◆ A DVI video port
- ◆ A 6-pin mini-DIN (PS/2 style) mouse port
- ◆ A 6-pin mini-DIN (PS/2 style) keyboard port

### CABLES

Only CS Custom cable sets specifically designed to work with this switch may be used to link to the computers. For optimum signal integrity and to simplify the layout, two high quality cables sets are provided with this package.

**Note:** There are three types of DVI signals (DVI-I, DVI-A, DVI-D). The cable type must match the type of signal being used by the DVI source and the DVI display.

## FRONT PANEL



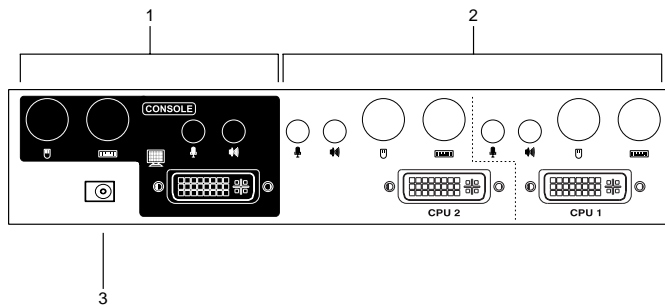
### 1. Port Selection Switches

### 2. Port LEDs

The Port LEDs are built into the Port Selection Switches. The upper ones are the On Line LEDs; the lower ones are the Selected Port LEDs:

- ◆ An *On Line* LEDs lights ORANGE to indicate that the computer attached to the corresponding port is up and running.
- ◆ A *Selected* LED lights GREEN to indicate that the computer attached to its corresponding port is the one that has the KVM focus.

## REAR PANEL



### 1. Console Port Section

The cables from your keyboard, monitor, mouse, microphone, and speakers plug in here. Each port is color coded and marked with an appropriate icon.

### 2. CPU Port Section

The cables that link the switch to your computers plug in here. Each CPU section is comprised of a keyboard, DVI video, mouse, microphone, and speaker port. Each port is color coded and marked with an appropriate icon.

### 3. Power Jack

The power adapter cable plugs into this jack.

## INSTALLATION



1. Make sure that power to each of the devices you will be connecting up has been turned off. You must unplug the power cords of any computers that have the *Keyboard Power On* function.
2. Make sure that all devices you will be connecting up are properly grounded.

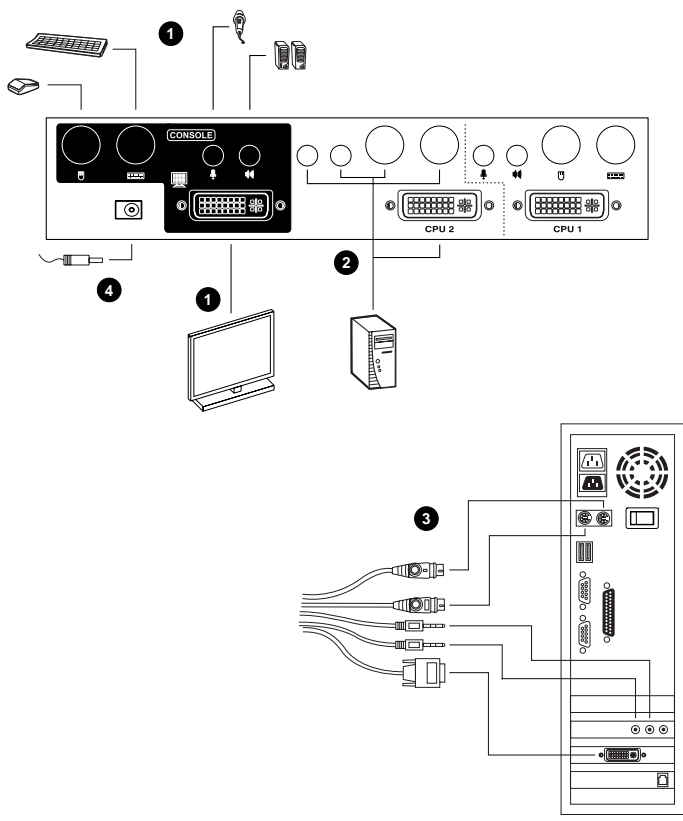
## CABLE CONNECTION

To set up your Master View CS-1262 installation, refer to the installation diagram on the following page (the numbers in the diagrams correspond to the steps, below), and do the following:

1. Plug your keyboard, DVI monitor, mouse, microphone, and speakers into the Console Ports located on the unit's rear panel.
2. Using a KVM cable set (provided with this package), plug the DVI connector into any available DVI socket in the CPU Port section of the switch, and plug the accompanying keyboard, mouse, microphone and speaker connectors into their corresponding sockets.

- Note:**
1. Use the end of the cable that has the shorter connector leads - the end with the longer leads is for plugging into the computer.
  2. Be sure that all the plugs are in the same CPU Port sockets (all in Port 1, all in Port 2, etc.).
  3. The CPU Port sockets and cable plugs are color coded and marked with an appropriate icon for easy installation.
3. At the other end of the cable, plug the keyboard, DVI monitor, mouse, microphone, and speaker connectors into their respective ports on the computer.
  4. Plug the power adapter that came with your switch into an AC power source, then plug power adapter cable into the switch's Power Jack.





## OPERATION

### HOT PLUGGING

The CS-1262 supports hot plugging - components can be removed and added back into the installation by unplugging and replugging their cables without the need to shut the unit down.

### POWERING OFF AND RESTARTING

If it becomes necessary to Power Off the Master View unit, before starting it back up you must do the following:

1. Shut down all the computers that are attached to the switch.
2. Unplug the switch's power adapter cable.
3. Wait 10 seconds, then plug the switch's power adapter cable back in.
4. After the switch is up, Power On the computers.

### THE BEEPER

The CS-1262 beeps to provide information about its operations as follows:

Beeps	Meaning
1	Manual port changes
	Start of Auto Scan Mode
	Beeper disabled
2	Power On
	End of Auto Scan Mode
	Hotkey port changes
	Beeper enabled

The Beeper can be toggled off and on with the following hotkey combination:

[Scroll Lock] [Scroll Lock] [B] [Enter]

## PORT SWITCHING

There are two convenient methods to switch the KVM and Audio focus between the computers: Manual - which involves pressing the pushbutton port selection switches located on the unit's front panel; and Hotkey - which involves entering combinations from the keyboard.

### Manual:

Press the Port Selection switches as follows:

- ◆ Press a switch for longer than two seconds to bring the KVM and audio focus to the computer attached to its corresponding port.
- ◆ Press a switch for less than two seconds to bring only the KVM focus to the computer attached to its corresponding port.
- ◆ Press switches 1 and 2 simultaneously for 3 seconds to start *Auto Scan Mode*. See p. 10 for details.

### Hotkeys:

Key in the hotkey combinations according to the information in the following table:

Hotkey	Action
[Scroll Lock] [Scroll Lock] [Enter]	Switches the KVM and audio focus from the port that currently has the KVM focus to the other port (1 to 2; 2 to 1).  Note that the KVM and audio focus both go to this port even if they were on different ports to begin with.
[Scroll Lock] [Scroll Lock] [K] [Enter]	Brings only the KVM focus from the port that currently has it to the other port. The audio focus remains where it is.
[Scroll Lock] [Scroll Lock] [S] [Enter]	Brings only the audio focus from the port that currently has it to the other port. The KVM focus remains where it is.

### Auto Scanning

The CS-1262's Auto Scan feature automatically switches the KVM focus between the two computer ports at regular intervals. This allows you to monitor the computer activity without having to take the trouble of switching from port to port manually. See the table below for details.

Hotkey	Action
[Scroll Lock] [Scroll Lock] [A] [Enter]	Starts Auto Scan Mode. The KVM focus switches from port to port at 5 second intervals.
[1, 2, 3, or 4]	Once Auto Scan Mode begins, the scan interval can be changed at any time by keying in the number that represents the desired number of seconds, as follows:  1 = 3 seconds 2 = 5 seconds 3 = 10 seconds 4 = 20 seconds).
[Esc] or [Spacebar]	Exits Auto Scan Mode.

- Note:**
1. While Auto Scan Mode is in effect, ordinary keyboard and mouse functions are suspended - only Auto Scan Mode compliant keystrokes and mouse clicks can be input. You must exit Auto Scan Mode in order to regain normal control of the console.
  2. Although the video focus switches from port to port, the keyboard, mouse, and audio do not switch. They stay at the port they were on when Auto Scanning started.

## HOTKEY SUMMARY TABLE

Hotkey	Action
[Scroll Lock] [Scroll Lock] [Enter]	Switches the KVM and audio focus from the port that currently has the KVM focus to the other port (1 to 2; 2 to 1).  Note that the KVM and audio focus both go to this port even if they were on different ports to begin with.
[Scroll Lock] [Scroll Lock] [K] [Enter]	Brings only the KVM focus from the port that currently has it to the other port. The audio focus remains where it is.
[Scroll Lock] [Scroll Lock] [S] [Enter]	Brings only the audio focus from the port that currently has it to the other port. The KVM focus remains where it is.
[Scroll Lock] [Scroll Lock] [A] [Enter]	Starts Auto Scan Mode. The KVM focus switches from port to port at 5 second intervals.
[1, 2, 3, or 4]	Once Auto Scan Mode begins, the scan time interval can be changed at any time by keying in the number that represents desired scan interval.
[Scroll Lock] [Scroll Lock] [B] [Enter]	Toggles the Beeper on and off.

## APPENDIX

### DVI PIN ASSIGNMENTS

Pin	Signal	Pin	Signal
1	TMDS Data2-	16	Hot Plug Detect
2	TMDS Data2+	17	TMDS Data0-
3	GND	18	TMDS Data0+
4	N.C.	19	GND
5	N.C.	20	N.C.
6	DDC Clock	21	N.C.
7	DDC Data	22	TMDS Clock Shield
8	Analog Vertical Sync.	23	TMDS Clock+
9	TMDS Data1-	24	TMDS Clock-
10	TMDS Data1+	C1	Analog Red
11	GND	C2	Analog Green
12	N.C.	C3	Analog Blue
13	N.C.	C4	Analog H. Sync.
14	+5V Power	C5	Analog Ground (Analog R, G, B Return)
15	Ground (return for +5V, H Sync., and V Sync.)		

## SPECIFICATIONS

Function		Specification
CPU Ports		2
Port Selection		Push button switches; Hotkeys
Console Connectors	Keyboard	1 x 6 pin mini-DIN F
	Mouse	1 x 6 pin mini-DIN F
	Video	1 x DVI-I F
	Speakers	1 x Earphone jack
	Microphone	1 x Microphone jack
CPU Port Connectors	Keyboard	2 x 6 pin mini-DIN F
	Mouse	2 x 6 pin mini-DIN F
	Video	2 x DVI-I F
	Speakers	2 x Earphone jacks
	Microphone	2 x Microphone jacks
LEDs	On Line	2 (Orange)
	Selected	2 (Green)
Power Consumption		DC 5.3V; 3.2W (max.)
Scan Interval		5 secs. (default)
KB / Mouse Emulation		PS/2
Video Resolution		1600 x 1200; DDC2B
PC Compatibility		Windows, Linux, Netware, Unix
Environment		Operating Temperature: 0 - 50° C Storage Temperature: -20 - 60° C Humidity: 0 - 85% RH, Noncondensing
Housing		Metal
Weight		0.8kg
Dimensions (L x W x H)		20.0 x 7.45 x 4.2 cm

**LIMITED WARRANTY**

IN NO EVENT SHALL THE DIRECT VENDOR'S LIABILITY EXCEED THE PRICE PAID FOR THE PRODUCT FROM THE DIRECT, INDIRECT, SPECIAL, INCIDENTAL OR CONSEQUENTIAL DAMAGES RESULTING FROM THE USE OF THE PRODUCT, DISK OR ITS DOCUMENTATION.

The direct vendor makes no warranty or representation, expressed, implied, or statutory with respect to the contents or use of this documentation, and specially disclaims its quality, performance, merchantability, or fitness for any particular purpose.

The direct vendor also reserves the right to revise or update the device or documentation without obligation to notify any individual or entity of such revisions, or update. For further inquires please contact your direct vendor.

- 14 -

2005-07-01



## Free Manuals Download Website

<http://myh66.com>

<http://usermanuals.us>

<http://www.somanuals.com>

<http://www.4manuals.cc>

<http://www.manual-lib.com>

<http://www.404manual.com>

<http://www.luxmanual.com>

<http://aubethermostatmanual.com>

Golf course search by state

<http://golfingnear.com>

Email search by domain

<http://emailbydomain.com>

Auto manuals search

<http://auto.somanuals.com>

TV manuals search

<http://tv.somanuals.com>