



NetCamera 500

A02-IPCAM5



QUICK START GUIDE A02-IPCAM5_GE01

System requirements

Before proceed with product installation, please make sure your system is in compliance with the following requirements:

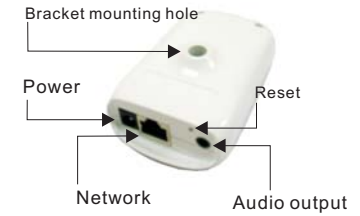
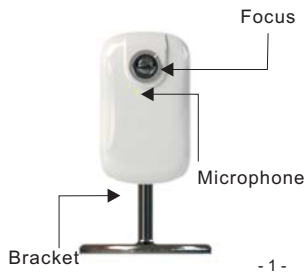
- Windows 98, ME, 2000, 2003, XP or Vista
- Internet Explorer 6.0 or later

Package contents

Before proceed with the product usage please check the package contents:

- IP Camera
- Power supply
- Mounting bracket
- Quick Start Guide
- CD-ROM

The product

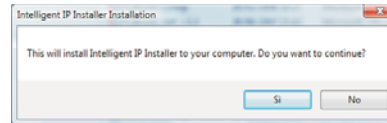


Configuration

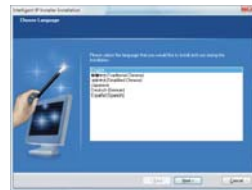
Turn on your PC and put the provided CD-Rom in your CD-Rom reader. A welcome page will appear. Select the purchased NetCamera and click on "Intelligent IP Installer" link, then follow the next steps.



1. Click **"Yes"** to proceed with the installation procedure



2. Select desired language and click **"Next"**



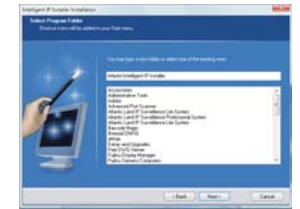
3. Click **"Next"** to go to the next step



4. Click **"Next"** to go to the next step



5. Click **"Next"** to go to the next step



6. Click **"Next"** to go to the next step



7. Click **"Install"** then **"Finish"** to complete the installation procedure.



www.atlantis-land.com

“Intelligent IP Installer” software

Launch the software just installed, then click on “**search**” button.



NOTE: The NetCamera is configured to get a dynamic IP address from a DHCP server in the network. If DHCP service is not available, the NetCamera will use an IP address in the range from 192.168.1.2 to 192.168.1.254. In this case, put 192.168.1.1 IP address in your PC network card configuration in order to start the product configuration.

The “Intelligent IP Installer” software, will automatically recognize the cameras connected to the network. Click “**Link to IE**” to open the WEB configuration page.

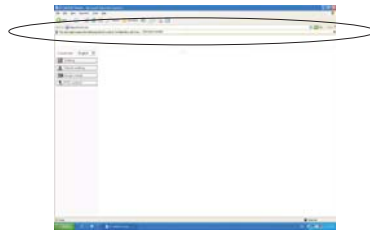
Use the following username and password to proceed with the product configuration.

Username: admin
Password: admin

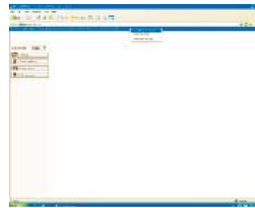
- 5 -

Viewing the images

1. During the first access, the web browser will need to install the ActiveX viewing software.

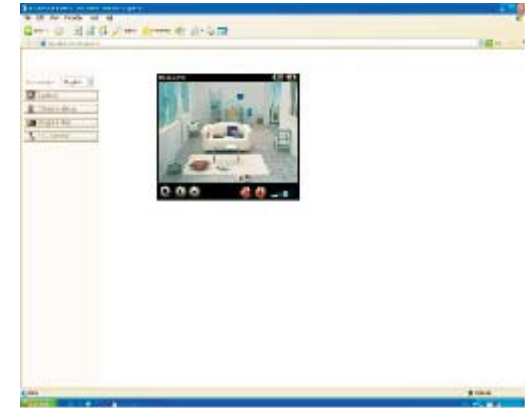


2. Click on “**Install ActiveX Control**” to proceed.
3. Click “**Install**” to install the ActiveX software.



- 6 -

4. Now you can use your NetCamera through the web browser.



- 7 -

ATTENTION

Use of audio or video equipment for recording the image or voice of a person without their knowledge and consent is prohibited in certain states or jurisdictions. Nothing herein represents a warranty or representation that the Atlantis product provided herein is suitable for the end-user's intended use under the applicable laws of his or her state. Atlantis Land SpA disclaims any liability whatsoever for any end-user use of the Atlantis product, which fails to comply with applicable state, local, or federal laws.

CE/EMC restriction of liability

The product described in this handbook was designed, produced and approved according to the EMC-regulations and is certified to be within EMC limitations.

If the product is used in an uncertified PC, the manufacturer undertakes no warranty in respect to the EMC limits. The described product in this handbook was constructed, produced and certified so that the measured values are within EMC limitations. In practice and under special circumstances, it may be possible, that the product may be outside of the given limits if it is used in a PC that is not produced under EMC certification. It is also possible in certain cases and under special circumstances, which the given EMC peak values will become out of tolerance. In these cases, the user himself is responsible for compliance with the EMC limits.

CE Mark Warning

This is a Class B product. In a domestic environment, this product may cause radio interference, in which case the user may be required to take adequate measures.

Important information for the correct recycle/treatment procedures of this equipment

The crossed-out wheeled bin symbol printed on the unit label or unit packaging indicates that this equipment must not be disposed of as unsorted municipal waste but it should be **collected separately**. The waste of electric and electronic equipment must be treated separately, in order to ensure that hazardous materials contained inside the equipment are not buried thereby providing potential future problems for the environment and human health. Moreover, it will be possible to reuse and recycle some parts of the waste of electric and electronic equipment, contributing to reduce the quantities of waste to be disposed of and the depletion of natural resources.

As user of this equipment, you are responsible to return this waste of electronic equipment to an authorised collection facility set up by your Municipality. More detailed information on your nearest collection centre can be obtained from your Municipality or from other competent local entities.

If you are replacing the old equipment with a new equivalent product, the distributor must take-back the old equipment free of charge on a one-to-one basis as long as the equipment is of equivalent type and fulfilled the same functions as the supplied equipment.

Your rôle in participating to the separate collection of waste of electric and electronic equipment is essential to ensure that environmental protection and human health objectives connected to a responsible treatment and recycling activities are achieved.

PS.: The above mentioned information are reported herewith in compliance with Directive 2002/96/CE, which requires a separate collection system and specific treatment and disposal procedures for the waste of electric and electronic equipments (WEEE). For further and more detailed information, we invite you to visit our website at www.atlantisland.com



Free Manuals Download Website

<http://myh66.com>

<http://usermanuals.us>

<http://www.somanuals.com>

<http://www.4manuals.cc>

<http://www.manual-lib.com>

<http://www.404manual.com>

<http://www.luxmanual.com>

<http://aubethermostatmanual.com>

Golf course search by state

<http://golfingnear.com>

Email search by domain

<http://emailbydomain.com>

Auto manuals search

<http://auto.somanuals.com>

TV manuals search

<http://tv.somanuals.com>