

BLACK & DECKER®

Cordless 22 inch (55.8 cm) Dual Action Hedge Trimmer

INSTRUCTION MANUAL

Date Code

Catalog Number NHT518,
NHT518G, NHT518L

THANK YOU FOR CHOOSING BLACK & DECKER!
GO TO WWW.BLACKANDDECKER.COM/NEWOWNER
TO REGISTER YOUR NEW PRODUCT.

**BEFORE RETURNING THIS PRODUCT
FOR ANY REASON PLEASE CALL
1-800-544-6986**

BEFORE YOU CALL, HAVE THE CATALOG No. AND DATE CODE AVAILABLE. IN MOST CASES, A
BLACK & DECKER REPRESENTATIVE CAN RESOLVE THE PROBLEM OVER THE PHONE. IF YOU HAVE A
SUGGESTION OR COMMENT, GIVE US A CALL. YOUR FEEDBACK IS VITAL TO BLACK & DECKER.

KEY INFORMATION YOU SHOULD KNOW:

- To operate the trimmer, the lock off button must be pushed forward.
- Charge battery for 9 hours before attempting to use your Hedge Trimmer.

SAVE THIS MANUAL FOR FUTURE REFERENCE.

Cat. No. NHT518, NHT518G, NHT518L Form No. 90526155-02 (Dec. '07)
Copyright © 2007 Black & Decker Printed in China

⚠️ WARNING: Important Safety Warnings and Instructions

TO REDUCE RISK OF INJURY:

- Before any use, be sure everyone using this tool reads and understands all safety instructions and other information contained in this manual.
- Save these instructions and review frequently prior to use and in instructing others.
- Keep long hair and loose clothing away from openings and moving parts.

⚠️ **WARNING:** When using an electric tool, basic safety precautions should always be followed to reduce risk of fire, electric shock, and personal injury, including the following.

⚠️ **WARNING:** Some dust created by this product contains chemicals known to the State of California to cause cancer, birth defects or other reproductive harm. Some examples of these chemicals are:

- compounds in fertilizers
- compounds in insecticides, herbicides and pesticides
- arsenic and chromium from chemically treated lumber

To reduce your exposure to these chemicals, wear approved safety equipment such as dust masks that are specially designed to filter out microscopic particles.

⚠️ **WARNING:** This product contains chemicals, including lead, known to the State of California to cause cancer, and birth defects or other reproductive harm. Wash hands after handling.

READ AND UNDERSTAND ALL INSTRUCTIONS BEFORE USING.

⚠️ GENERAL SAFETY WARNINGS AND INSTRUCTIONS FOR ALL TOOLS

- READ** and understand all instructions.
- A BATTERY OPERATED UNIT** with integral batteries or a separate battery pack must be recharged only with the specified charger for the battery. A charger that may be suitable for one type of battery may create a risk of fire when used with another battery.
- USE BATTERY OPERATED UNIT ONLY** with specifically designated battery pack. Use of any other batteries may create a risk of fire.
- AVOID** accidental starting. Be sure switch is in the locked or off position before inserting battery pack. Carrying units with your finger on the switch or inserting the battery pack into a unit with the switch on invites accidents.
- DO NOT** use unit if switch does not turn it on or off. A unit that cannot be controlled with the switch is dangerous and must be repaired.
- DISCONNECT** battery pack from unit or place the switch in the locked or off position before making any adjustments, changing accessories, or storing the unit. Such preventative safety measures reduce the risk of starting the unit accidentally.
- AVOID DANGEROUS ENVIRONMENT** - Do not use or charge hedge trimmers in damp or wet locations.
- DO NOT USE OR CHARGE** battery operated hedge trimmer in rain.
- DO NOT OPERATE** hedge trimmer in gaseous or explosive atmospheres. Motors in these tools normally spark, and the sparks might ignite fumes.
- KEEP CHILDREN AWAY** - All visitors should be kept at a safe distance from the work area.
- DRESS PROPERLY** - Don't wear loose clothing or jewelry. They can be caught in moving parts. Use of rubber gloves and substantial footwear is recommended when working outdoors. Wear protective hair covering to contain long hair.
- ALWAYS WEAR EYE PROTECTION** - Wear safety glasses or goggles at all times when this unit is in use. Also use face or dust mask. Safety glasses are available at extra cost at your local Black & Decker Service Center or authorized service facility.
- USE RIGHT APPLIANCE** - Do not use appliance for any job except that for which it is intended.
- AVOID UNINTENTIONAL STARTING** - Don't carry hedge trimmer with finger on switch.
⚠️ **DANGER:** Risk of cut. Keep hands away from blades. Keep both hands on handles when power is on.
- DO NOT ATTEMPT** to remove cut material or hold material to be cut when blades are moving. Make sure battery is removed when clearing jammed material from blades. Do not grasp the exposed cutting blades or cutting edges when picking up or holding the hedge trimmer.

⚠️ **CAUTION:** Blades may coast after turn off.

⚠️ **CAUTION:** NEVER use guard as a handle. Never grasp the unit by the guard. Failure to heed this warning can result in serious personal injury.

⚠️ **DON'T FORCE HEDGE TRIMMER** - It will do the job better and with less likelihood of a risk of injury at the rate for which it was designed.

⚠️ **DANGER:** If blade jams on any electrical cord or line, DO NOT TOUCH THE BLADE! IT CAN BECOME ELECTRICALLY LIVE AND VERY DANGEROUS. Release the unit in the

safest manner possible. Disconnect the damaged electrical cord or line from the power source. If possible, do so safely. If in doubt, call an electrician or the electrical contractor for assistance. Failure to heed this Danger will result in serious personal injury and possibly death.

- DON'T OVERREACH** - Keep proper footing and balance at all times.
- STAY ALERT** - Watch what you are doing. Use common sense. Do not operate hedge trimmer when you are tired.
- STORE IDLE HEDGE TRIMMER INDOORS** - When not in use, hedge trimmer should be stored indoors in a dry and high or locked-up place—out of reach of children.
- MAINTAIN HEDGE TRIMMER WITH CARE** - Keep cutting edge sharp and clean for best performance and to reduce the risk of injury. Follow instructions for lubricating. Keep handles dry, clean and free from oil and grease.

⚠️ **CAUTION:** Do not at any time let brake fluids, gasoline, petroleum based products, penetrating oils, etc., come in contact with plastic parts. They contain chemicals that can damage, weaken or destroy plastic.

- CHECK DAMAGED PARTS** - If damage to trimmer occurs, before further use of the hedge trimmer, a guard or other part that is damaged should be carefully checked to determine that it will operate properly and perform its intended function. Check for alignment of moving parts, binding of moving parts, breakage of parts, mounting and any other condition that may affect its operation. A guard or other part that is damaged should be properly repaired or replaced by an authorized service center unless otherwise indicated elsewhere in this manual.
- REMOVE BATTERY** before servicing, cleaning or removing material from the hedge trimmer. Remove battery from your hedge trimmer and carry by the front handle when not in use.
- EXERCISE CARE** in handling batteries in order not to short the battery with conducting materials such as rings, bracelets and keys. The battery or conductor may overheat and cause burns.
- DO NOT OPEN OR MUTILATE** the batteries. Released electrolyte is corrosive and may cause damage to the eyes or skin. It may be toxic if swallowed.
- GROUND FAULT CIRCUIT INTERRUPTER (GFCI)** protection should be provided on the circuit(s) or outlet(s) to be used for the hedge trimmer. Receptacles are available having built-in GFCI protection and may be used for this measure of safety.

⚠️ **WARNING:** To reduce the risk of electrical shock; do not expose to rain, do not use on wet surfaces. Store indoors.

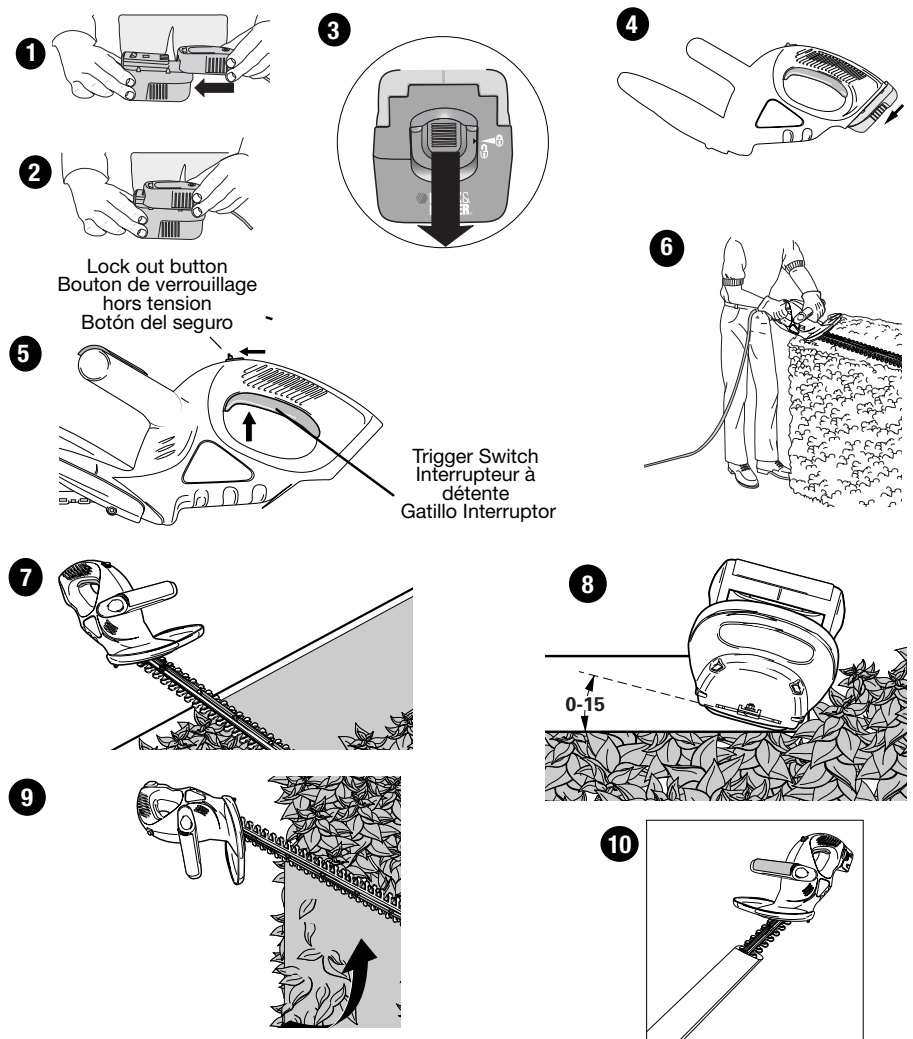
FIRST AID MEASURES FOR GEL COMPONENTS (NHT518G ONLY)

If gel within the comfort grip becomes exposed and results in skin contact wash with soap and water; for eye contact, flush with flowing water. If swallowed, seek medical attention. Material Safety Data Sheet (MSDS) available from 1-800-544-6986

SAVE THESE INSTRUCTIONS.

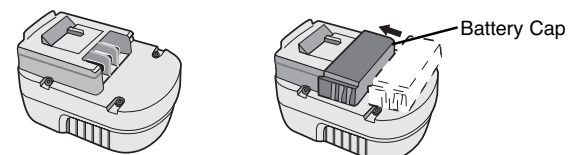
The label on your unit may include the following symbols.

V	volts	A	amperes
Hz	hertz	W.....	watts
min	minutes	~	alternating current
====	direct current	n _o	no load speed
□	Class II Construction	⊕	earthing terminal
⚠️	safety alert symbol	./min	revolutions or reciprocations per minute



BATTERY CAP INFORMATION

Battery storage and carrying caps are provided for use whenever the battery is out of the unit or charger. Remove cap before placing battery in charger or unit.



⚠️ **WARNING:** Do not store or carry battery so that metal objects can contact exposed battery terminals. For example, do not place battery in aprons, pockets, tool boxes, product kit boxes, drawers, etc. with loose nails, screws, keys, etc. without battery cap. Transporting batteries can possibly cause fires if the battery terminals inadvertently come in contact with conductive materials such as keys, coins, hand tools and the like. The US Department of Transportation Hazardous Material Regulations (HMR) actually prohibit transporting batteries in commerce or on airplanes (i.e. packed in suitcases and carryon luggage) UNLESS they are properly protected from short circuits. So when transporting individual batteries, make sure that the battery terminals are protected and well insulated from materials that could contact them and cause a short circuit."

⚠️ SAFETY WARNINGS AND INSTRUCTIONS

CHARGING THE BATTERY

- This manual contains important safety and operating instructions.
- Before using battery charger, read all instructions and cautionary markings on (1) battery charger, (2) battery, and (3) product using battery.
- ⚠️ **CAUTION:** To reduce the risk of injury, charge only Black & Decker Power Packs. Other types of batteries may burst causing personal injury and damage.
- Do not expose charger to rain or snow.

- Use of an attachment not recommended or sold by Black & Decker may result in a risk of fire, electric shock, or injury to persons.
- To reduce risk of damage to electric plug and cord, pull by plug rather than cord when disconnecting charger.
- Make sure cord is located so that it will not be stepped on, tripped over, or otherwise subjected to damage or stress.
- An extension cord should not be used unless absolutely necessary. Use of improper extension cord could result in a risk of fire, electric shock or electrocution.
 - Two-wire cords can be used with 2-wire or 3-wire extension cords. Only round jacketed extension cords should be used, and we recommend that they be listed by Underwriters Laboratories (U.L.). If the extension is to be used outside, the cord must be suitable for outdoor use. Any cord marked for outdoor use can also be used for indoor work. The letters "W" or "WA" on the cord jacket indicate that the cord is suitable for outdoor use.
 - An extension cord must have adequate wire size (AWG or American Wire Gauge) for safety, and to prevent loss of power and overheating. The smaller the gauge number of the wire, the greater the capacity of the cable; that is, 16 gauge has more capacity than 18 gauge. When using more than one extension to make up the total length, be sure each extension contains at least the minimum wire size.

CHART FOR MINIMUM WIRE SIZE (AWG) OF EXTENSION CORDS NAMEPLATE RATING AMPS – 0 – 10.0

Total Extension Cord Length (ft)	25	50	75	100	125	150
Wire Gauge	18	18	16	16	14	14

- Use only the supplied charger when charging your unit. The use of any other charger could damage the battery or create a hazardous condition.
 - Use only one charger when charging.
 - Do not attempt to open the charger or the unit. There are no customer serviceable parts inside. Return to any authorized Black & Decker service center.
 - DO NOT incinerate battery packs even if they are severely damaged or completely worn out.
 - Do not incinerate the batteries. They can explode in a fire. A small leakage of liquid from the battery cells may occur under extreme usage, charging or temperature conditions. This does not indicate a failure. However, if the outer seal is broken and this leakage gets on your skin:
 - Wash quickly with soap and water.
 - Neutralize with a mild acid such as lemon juice or vinegar.
 - If the battery liquid gets in your eyes, flush them with clean water for a minimum of 10 minutes and seek immediate medical attention.
- MEDICAL NOTE:** The liquid is a 25-35% solution of potassium hydroxide.

SAVE THESE INSTRUCTIONS

⚠ IMPORTANT CHARGING SAFETY INSTRUCTIONS

CHARGING THE POWER PACK

THE BATTERIES IN YOUR POWER PACK ARE NOT FULLY CHARGED AT THE FACTORY. BEFORE ATTEMPTING TO CHARGE THEM, THOROUGHLY READ ALL OF THE SAFETY INSTRUCTIONS.

The charger is designed to use standard household 120 volt 60 Hz power.

- Plug the charger into any standard 120 Volt 60 Hz electrical outlet. **NOTE: Do not charge by means of an engine generator or DC power source. Use only 120V AC.**
- Slide the charger onto the power pack as shown in Figure 1 & 2 and let the power pack charge initially for 9 hours. After the initial charge, under normal usage, your power pack should be fully charged in 3 to 9 hours.
- Unplug charger, and remove the power pack. **Place the power pack in the unit and be certain that it is inserted fully into the battery cavity until it "clicks" into place.** (Figure 4)

NOTE: To remove the power pack from the unit, press down on the release button on the back of the pack (Figure 3) and slide out.

IMPORTANT CHARGING NOTES

- After normal usage, your power pack should be fully charged in 3 to 9 hours. If the power pack is run-down completely, it may take up to 9 hours to become fully charged. Your power pack was sent from the factory in an uncharged condition. Before attempting to use it, it must be charged for at least 9 hours.
- DO NOT charge the power pack in an air temperature below +40°F(+4.5°C), or above +105°F (+40.5°C). This is important and will prevent serious damage to the power pack. Longest life and best performance can be obtained if power pack is charged when air temperature is about 75°F (24°C).
- While charging, the charger may hum and become warm to touch. This is a normal condition and does not indicate a problem.
- If the power pack does not charge properly—(1) Check current at receptacle by plugging in a lamp or other appliance. (2) Check to see if receptacle is connected to a light switch which turns power off when you turn out the lights. (3) Move charger and power pack to a surrounding air temperature of 40°F (+4.5°C) to 105°F (+40.5°C). (4) If the receptacle and temperature are OK, and you do not get proper charging, take or send the power pack and charger to your local Black & Decker service center. See Tools Electric in yellow pages.
- The power pack should be recharged when it fails to produce sufficient power on jobs which were easily done previously. DO NOT CONTINUE using unit with its power pack in a depleted condition.
- The power pack will reach optimum performance after being cycled 5 times during normal usage. There is no need to run the batteries down completely before recharging. Normal usage is the best method of discharging and recharging the power pack.

LEAVING THE BATTERY PACK IN THE CHARGER

The charger and battery pack can be left connected with the red light glowing indefinitely. The charger will keep the battery pack fresh and fully charged.

NOTE: A battery pack will slowly lose its charge when kept out of the charger. If the battery pack has not been kept on maintenance charge, it may need to be recharged before use. A battery pack may also slowly lose its charge if left in a charger that is not plugged into an appropriate AC source.

SWITCH

To turn the unit "ON", slide the lock off button, shown in Figure 5, forward and, squeeze the trigger switch. Once the unit is running, you may release the lock off button. In order to keep the unit running you must continue to squeeze the trigger. To turn the unit "OFF", simply release the trigger.

TRIMMING INSTRUCTIONS

- WORKING POSITION** – Maintain proper footing and balance and do not overreach. Wear safety goggles, non-skid footwear and rubber gloves when trimming. Hold the unit firmly in both hands and turn the unit ON. Always hold the trimmer, as shown in the illustrations in this manual, with one hand on the switch handle and one hand on the bail handle. (Figure 6) Never hold the unit by the blade guard.
- TRIMMING NEW GROWTH** – (Figure 8) A wide, sweeping motion, feeding the blade teeth through the twigs is most effective. A slight downward tilt of the blade, in the direction of motion gives the best cutting.

⚠ CAUTION: Do not cut stems greater than 3/4 inch (19mm). Use the trimmer only for cutting normal shrubbery around houses and buildings.

- LEVEL HEDGES** (Figure 7) – To obtain exceptionally level hedges a piece of string can be stretched along the length of the hedge as a guide.
- SIDE TRIMMING HEDGES** (Figure 9) – Hold the trimmer as shown and begin at the bottom and sweep up.

⚠ WARNING: TO GUARD AGAINST INJURY, OBSERVE THE FOLLOWING:

- READ INSTRUCTION MANUAL BEFORE USING.
- SAVE INSTRUCTION MANUAL.
- KEEP HANDS AWAY FROM BLADES.
- KEEP HANDS ON HANDLES. DON'T OVERREACH.

- ⚠ **CAUTION** – BLADE MAY COAST AFTER TURN OFF.
- DO NOT USE UNDER WET CONDITIONS.

Problem	TROUBLESHOOTING Possible Cause	Possible Solution
• Slow running, noisy or hot blades.	• Dry, corroded blades. • Blades or blade support bent.	• Lubricate blades. • Straighten blade or blade support.
• Unit does not run.	• Bent or damaged teeth. • Loose blade bolts. • Battery not making contact. • Lock off not fully operated.	• Straighten teeth. • Tighten blade bolts. • Check battery is full inserted. • Check that lock off is fully forward prior to moving main trigger.
• Battery will not charge.	• Battery not installed properly. • Battery not charged. • Battery not inserted into charger. • Charger not plugged in.	• Check battery installation. • Check battery charging requirements. • Insert battery into charger until red LED appears. • Plug charger into a working outlet. Refer to "Important Charging Notes" for more details. • Check current at receptacle by plugging in a lamp or other appliance. • Check to see if receptacle is connected to a light switch which turns power off when you turn out the lights. • Move charger and tool to a surrounding air temperature of above 40 degree F(4,5°C) or below 105 degree F (+40,5°C).
	• Surrounding air temperature too hot or too cold.	

For assistance with your product, visit our website www.blackanddecker.com for the location of the service center nearest you or call the BLACK & DECKER help line at **1-800-544-6986**.

MAINTENANCE

A vinyl sheath is supplied with your trimmer. Slip the hedge trimmer into it, as shown in Figure 10. The cutting blades are made from high quality, hardened steel and with normal usage, they will not require resharpening. However, if you accidentally hit a wire fence, stones, glass or other hard objects, you may put a nick in the blade. There is no need to remove this nick as long as it does not interfere with the movement of the blade. If it does interfere, remove the battery and use a fine toothed file or sharpening stone to remove the nick.

If you drop the trimmer, carefully inspect it for damage. If the blade is bent, housing cracked, or handles broken or if you see any other condition that may affect the trimmer's operation contact your local Black & Decker Service Center for repairs before putting it back into use. Fertilizers and other garden chemicals contain agents which greatly accelerate the corrosion of metals. Do not store the unit on or adjacent to fertilizers or chemicals. With the battery removed, use only mild soap and a damp cloth to clean the unit. Never let any liquid get inside the unit; never immerse any part of the unit into a liquid. Prevent the blades from rusting by applying a film of light machine oil after cleaning.

⚠ WARNING: DO NOT use the hedge trimmer with any type of accessory or attachment. Such usage might be hazardous.

THE RBRC™ SEAL

The RBRC™ (Rechargeable Battery Recycling Corporation) Seal on the nickel-cadmium battery (or battery pack) indicates that the costs to recycle the battery (or battery pack) at the end of its useful life have already been paid by Black & Decker. In some areas, it is illegal to place spent nickel-cadmium batteries in the trash or municipal solid waste stream and the RBRC program provides an environmentally conscious alternative. RBRC in cooperation with Black & Decker and other battery users, has established programs in the United States and Canada to facilitate the collection of spent nickel-cadmium batteries. Help protect our environment and conserve natural resources by returning the spent nickel-cadmium battery to an authorized Black & Decker service center or to your local retailer for recycling. You may also contact your local recycling center for information on where to drop off the spent battery, or call **1-800-544-6986**.



IMPORTANT

To assure product SAFETY and RELIABILITY, repairs, maintenance and adjustment should be performed by authorized service centers or other qualified service organizations, always using identical replacement parts.

SERVICE INFORMATION

All Black & Decker Service Centers are staffed with trained personnel to provide customers with efficient and reliable power tool service. Whether you need technical advice, repair, or genuine factory replacement parts, contact the Black & Decker location nearest you. To find your local service location, refer to the yellow page directory under "Tools—Electric" or call: **1-800-544-6986** or visit www.blackanddecker.com

FULL TWO-YEAR HOME USE WARRANTY

Black & Decker (U.S.) Inc. warrants this product for two years against any defects in material or workmanship. The defective product will be replaced or repaired at no charge in either of two ways.

The first, which will result in exchanges only, is to return the product to the retailer from whom it was purchased (provided that the store is a participating retailer). Returns should be made within the time period of the retailer's policy for exchanges (usually 30 to 90 days after the sale). Proof of purchase may be required. Please check with the retailer for their specific return policy regarding returns that are beyond the time set for exchanges.

The second option is to take or send the product (prepaid) to a Black & Decker owned or authorized Service Center for repair or replacement at our option. Proof of purchase may be required. Black & Decker owned and authorized Service Centers are listed under "Tools-Electric" in the yellow pages of the phone directory.

This warranty does not apply to accessories. This warranty gives you specific legal rights and you may have other rights which vary from state to state or province to province. Should you have any questions, contact the manager of your nearest Black & Decker Service Center. This product is not intended for commercial use.

FREE WARNING LABEL REPLACEMENT: If your warning labels become illegible or are missing, call **1-800-544-6986** for a free replacement.

Imported by
Black & Decker (U.S.) Inc.,
701 E. Joppa Rd.
Towson, MD 21286 U.S.A.

See 'Tools-
Electric'
– Yellow Pages –
for Service &
Sales



Free Manuals Download Website

<http://myh66.com>

<http://usermanuals.us>

<http://www.somanuals.com>

<http://www.4manuals.cc>

<http://www.manual-lib.com>

<http://www.404manual.com>

<http://www.luxmanual.com>

<http://aubethermostatmanual.com>

Golf course search by state

<http://golfingnear.com>

Email search by domain

<http://emailbydomain.com>

Auto manuals search

<http://auto.somanuals.com>

TV manuals search

<http://tv.somanuals.com>