

BOGEN[®]

COMMUNICATIONS, INC.

POWER SUPPLY

PRS-ASAC

PRS-ASAC SPECIFICATION CHART

TERMINAL	FUNCTION
1	+24VDC, 450mA
2	-24VDC, 450mA
3	Trunk T 24VDC, 35mA
4	Trunk R 24VDC, 35mA
5	AMPLIFIED SPEAKER T
6	AMPLIFIED SPEAKER R

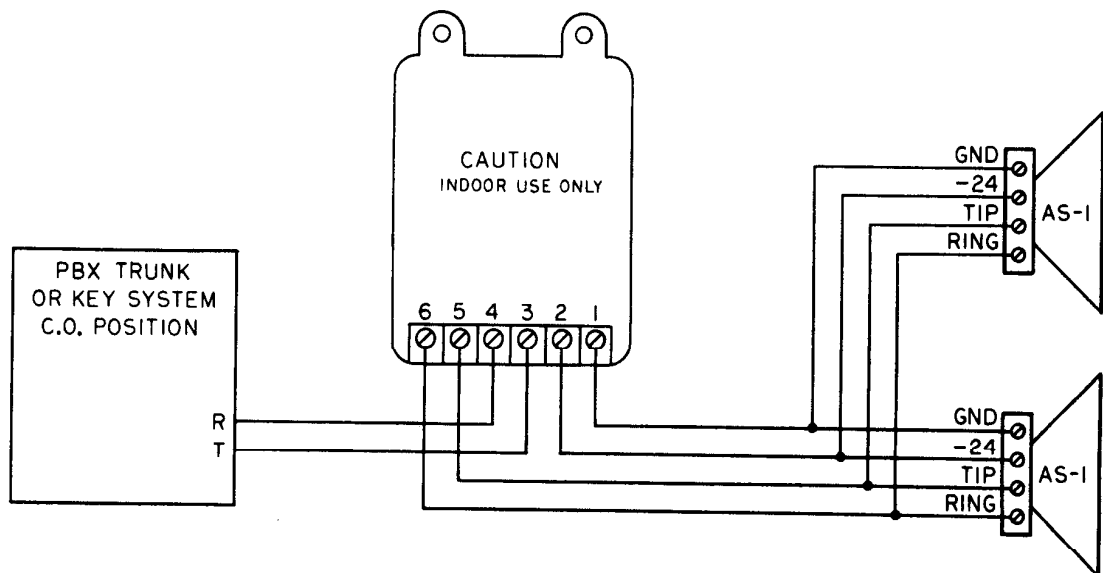
INPUT: 120VAC, 60Hz, 0.22A
OUTPUTS: 24VDC, 450mA, REG
24VDC, 35mA

CONNECTIONS

Terminals 1 and 2 provide 24VDC, 450mA power to amplified speakers or other device requiring such power.

Terminals 3 and 4 are for providing Loop Current to the TIP and RING lines of a loopstart trunk or a key-system CO line.

Terminals 5 and 6 provide DC-isolated audio from the T and R of the trunk; typically connected to an amplified speaker input terminal to provide an audio source for the amplification system.



BOGEN[®]
COMMUNICATIONS, INC.
50 SPRING STREET, P.O. Box 575
RAMSEY, NJ 07446 (201) 934-8500

Printed in U.S.A. 9001 54-5859-02

Free Manuals Download Website

<http://myh66.com>

<http://usermanuals.us>

<http://www.somanuals.com>

<http://www.4manuals.cc>

<http://www.manual-lib.com>

<http://www.404manual.com>

<http://www.luxmanual.com>

<http://aubethermostatmanual.com>

Golf course search by state

<http://golfingnear.com>

Email search by domain

<http://emailbydomain.com>

Auto manuals search

<http://auto.somanuals.com>

TV manuals search

<http://tv.somanuals.com>