



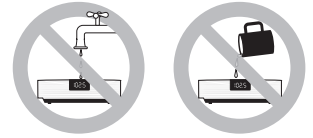
The Wave/PC™ Interactive System

Owner's Guide

April 12, 2001

PDF259774_00

⚠ WARNING: To reduce the risk of fire or electric shock, do not expose the Wave/PC™ system to rain or moisture.



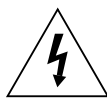
As with any electronic product, use care not to spill liquids into any part of the Wave/PC unit. Liquids can cause a failure and/or a fire hazard.

Keep the remote control lithium battery away from children. It may cause a fire or chemical burn if mishandled. Do not recharge, disassemble, heat above 100°C (212°F), or incinerate. Dispose of used battery promptly. Replace only with a battery of the correct type and model number.

	CAUTION RISK OF ELECTRICAL SHOCK DO NOT OPEN	
<p>CAUTION: TO REDUCE THE RISK OF ELECTRIC SHOCK, DO NOT REMOVE COVER (OR BACK). NO USER-SERVICABLE PARTS INSIDE. REFER SERVICING TO QUALIFIED PERSONNEL.</p>		

	AVIS RISQUE DE CHOC ÉLECTRIQUE NE PAS OUVRIR	
<p>ATTENTION : POUR RÉDUIRE LE RISQUE DE DÉCHARGE ÉLECTRIQUE, NE RETIREZ PAS LE COUVERCLE (OU L'ARRIÈRE). IL NE SE TROUVE À L'INTÉRIEUR AUCUNE PIÈCE POUVANT ÊTRE RÉPARÉE PAR L'USAGER. S'ADRESSER À UN RÉPARATEUR COMPÉTENT.</p>		

These CAUTION marks are located on the bottom of your Wave/PC unit:



The lightning flash with arrowhead symbol, within an equilateral triangle, is intended to alert the user to the presence of uninsulated dangerous voltage within the system enclosure that may be of sufficient magnitude to constitute a risk of electric shock.



The exclamation point within an equilateral triangle, as marked on the system, is intended to alert the user to the presence of important operating and maintenance instructions in this owner's guide.

⚠ CAUTION: To prevent electric shock, match wide blade of plug to wide slot, insert fully.

⚠ ATTENTION: Pour éviter les chocs électriques, introduire la lame la plus large de la fiche dans la borne correspondante de la prise et pousser jusqu'au fond.

Batteries

Please dispose of used batteries properly, following any local regulations. Do not incinerate.

Please read this owner's guide


Please take the time to follow this owner's guide carefully. It will help you set up and operate your system properly, and enjoy all of its advanced features. Save your owner's guide for future reference.

🎵 Note: No naked flame sources, such as lighted candles, should be placed on the apparatus.

🎵 Note: DO NOT place the Wave/PC unit on any heat-sensitive surface, such as the finished surface of fine furniture. Like all electrical equipment, it generates some heat.

© 2001 Bose Corporation. No part of this work may be reproduced, modified, distributed or otherwise used without prior written permission.

Bose, Wave, Wave/PC and the Wave radio design are registered trademarks of Bose Corporation. All other trademarks referenced herein are property of their respective owners.

1. **Read these instructions** – for all components before using this product.
2. **Keep these instructions** – for future reference.
3. **Heed all warnings** – on the product and in the owner's guide.
4. **Follow all instructions.**
5. **Do not use this apparatus near water or moisture** – Do not use this product near a bathtub, washbowl, kitchen sink, laundry tub, in a wet basement, near a swimming pool, or anywhere else that water or moisture are present.
6. **Clean only with a dry cloth** – and as directed by Bose® Corporation. Unplug this product from the wall outlet before cleaning.
7. **Do not block any ventilation openings. Install in accordance with the manufacturer's instructions** – To ensure reliable operation of the product and to protect it from overheating, put the product in a position and location that will not interfere with its proper ventilation. For example, do not place the product on a bed, sofa, or similar surface that may block the ventilation openings. Do not put it in a built-in system, such as a bookcase or a cabinet that may keep air from flowing through its ventilation openings.
8. **Do not install near any heat sources, such as radiators, heat registers, stoves or other apparatus (including amplifiers) that produce heat.**
9. **Do not defeat the safety purpose of the polarized or grounding-type plug. A polarized plug has two blades with one wider than the other. A grounding-type plug has two blades and a third grounding prong. The wider blade or third prong are provided for your safety. If the provided plug does not fit in your outlet, consult an electrician for replacement of the obsolete outlet.**
10. **Protect the power cord from being walked on or pinched, particularly at plugs, convenience receptacles, and the point where they exit from the apparatus.**
11. **Only use attachments/accessories specified by the manufacturer.**
12. **Use only with a cart, stand, tripod, bracket or table specified by the manufacturer or sold with the apparatus. When a cart is used, use caution when moving the cart/apparatus combination to avoid injury from tip-over.** 
13. **Unplug this apparatus during lightning storms or when unused for long periods of time** – to prevent damage to this product.
14. **Refer all servicing to qualified service personnel. Servicing is required when the apparatus has been damaged in any way: such as power-supply cord or plug is damaged; liquid has been spilled or objects have fallen into the apparatus; the apparatus has been exposed to rain or moisture, does not operate normally, or has been dropped** – Do not attempt to service this product yourself. Opening or removing covers may expose you to dangerous voltages or other hazards. Please call Bose to be referred to an authorized service center near you.
15. **To prevent risk of fire or electric shock, avoid overloading wall outlets, extension cords, or integral convenience receptacles.**
16. **Do not let objects or liquids enter the product** – as they may touch dangerous voltage points or short-out parts that could result in a fire or electric shock.
17. **See product enclosure bottom for safety related markings.**
18. **Use Proper Power Sources** – Plug the product into a proper power source, as described in the operating instructions or as marked on the product.
19. **Avoid Power Lines** – Use extreme care when installing an outside antenna system to keep from touching power lines or circuits, as contact with them may be fatal. Do not install external antennas near overhead power lines or other electric light or power circuits, nor where an antenna can fall into such circuits or power lines.
20. **Ground All Outdoor Antennas** – If an external antenna or cable system is connected to this product, be sure the antenna or cable system is grounded. This will provide some protection against voltage surges and built-up static charges.

Section 810 of the National Electrical Code ANSI/NFPA No. 70 provides information with respect to proper grounding of the mast and supporting structure, grounding of the lead-in wire to an antenna discharge unit, size of grounding conductors, location of antenna-discharge unit, connection to grounding electrodes, and requirements for the ground electrode. Refer to the antenna grounding illustration on this page.

Information about products that generate electrical noise

If applicable, this equipment has been tested and found to comply with the limits for a Class B digital device, pursuant to Part 15 of the FCC rules. These limits are designed to provide reasonable protection against harmful interference in a residential installation. This equipment generates, uses, and can radiate radio frequency energy and, if not installed and used in accordance with the instructions, may cause harmful interference to radio communications. However, this is no guarantee that interference will not occur in a particular installation. If this equipment does cause harmful interference to radio or television reception, which can be determined by turning the equipment off and on, you are encouraged to try to correct the interference by one or more of the following measures:

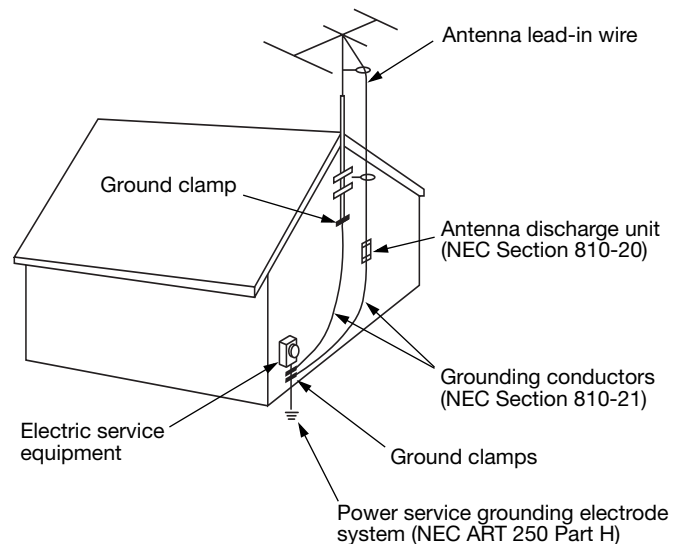
- Reorient or relocate the receiving antenna.
- Increase the separation between the equipment and receiver.
- Connect the equipment to an outlet on a different circuit than the one to which the receiver is connected.
- Consult the dealer or an experienced radio/TV technician for help.

Note: *Unauthorized modification of the receiver or radio remote control could void the user's authority to operate this equipment.*

This product complies with the Canadian ICES-003 Class B specifications.

Antenna grounding

Example of antenna grounding as per National Electrical Code, ANSI/NFPA 70.



Note to CATV system installer

This reminder is provided to call the CATV system installer's attention to Article 820-40 of the NEC (of USA) that provides guidelines for proper grounding. In particular, it specifies that the cable ground shall be connected to the grounding system of the building, as close to the point of cable entry as is practical.

System Setup	6
Before you begin	6
Installing the Wave/PC™ system hardware	7
Installing the Wave/PC application software	12
System Overview	15
The Wave/PC system controls	15
Turning your Wave/PC system on and off	15
Wave/PC application window	16
Wave/PC remote control	17
Wave/PC system audio and your computer system	17
The Wave/PC system monitor	19
Operating the CD Player/Recorder	20
Playing an audio CD	20
Recording an audio CD	22
Setting CD player/recorder setup options	24
Listening to Music Files	27
Selecting the music files player	27
Navigating the music finder	28
Maintaining your music library	31
Creating your own music playlists	32
Setting the Music Files player setup options	33
Listening to Web Radio Stations	36
Selecting the Web Radio mode	36
Setting presets to play Web radio stations	38
Setting Web radio setup options	39
Listening to AM/FM Radio Stations	40
Selecting the AM/FM radio	40
Setting presets to play AM/FM radio stations	42
Setting AM/FM radio setup options	42
General and Internet Setup Options	44
Setting general setup options	44
Setting Internet setup options	45
Using the Wave/PC Unit Controls	47
The Wave/PC unit control panel	47
The Wave/PC unit display	47
Setting the clock time	49
Using the sleep mode	49
Setting and using alarms	49
Making External Input/Output Connections	51
Connecting an external audio source to the Wave/PC unit	51
Selecting an external audio source	51
Connecting external speakers to your Wave/PC unit	51
Input connection details	52
Reference	53
Cleaning the Wave/PC unit	53
Replacing the batteries	53
Technical information	53
Warranty period	53
Troubleshooting	54
Glossary	59
Index	61

Before you begin

Thank you for purchasing the Bose[®] Wave/PC[™] interactive system. This system combines the power of your computer with the benefits of award-winning patented acoustic waveguide speaker technology to provide an entirely new way to listen to music. The Wave/PC system gives you one-touch access to your favorite AM/FM or Internet radio stations, music files, and your entire music collection in one easy-to-use package.

To fully appreciate the exciting features of this system, please take the time to read this owner's guide. It tells you how to set up and operate your Wave/PC interactive system and enjoy extraordinary sound.

System benefits

- Play and record CDs using your computer's CD-ROM drive.
- Listen to AM/FM radio with the system's high performance stereo tuner.
- Listen to Web radio stations through your Internet connection.
- Listen to music files stored on your computer's hard drive.
- Assign up to six presets for AM/FM, Web Radio, and Music Files.
- Control the system from anywhere in the room using the Wave/PC remote control.
- Set one or both of the independent alarms.
- Listen to an additional sound source, such as a tape player, through an auxiliary input.

System installation

The Wave/PC interactive system is installed in two phases. The first phase, "Installing the Wave/PC[™] system hardware" on page 7, describes setting up the hardware components of the system. The second phase, "Installing the Wave/PC[™] application software" on page 12, guides you through the software installation process.

For your records

The Wave/PC system serial number is located on the bottom of the Wave/PC unit.

Serial number: _____

Purchase date: _____

We suggest you keep your sales receipt and warranty card together with this owner's guide.

Installing the Wave/PC™ system hardware

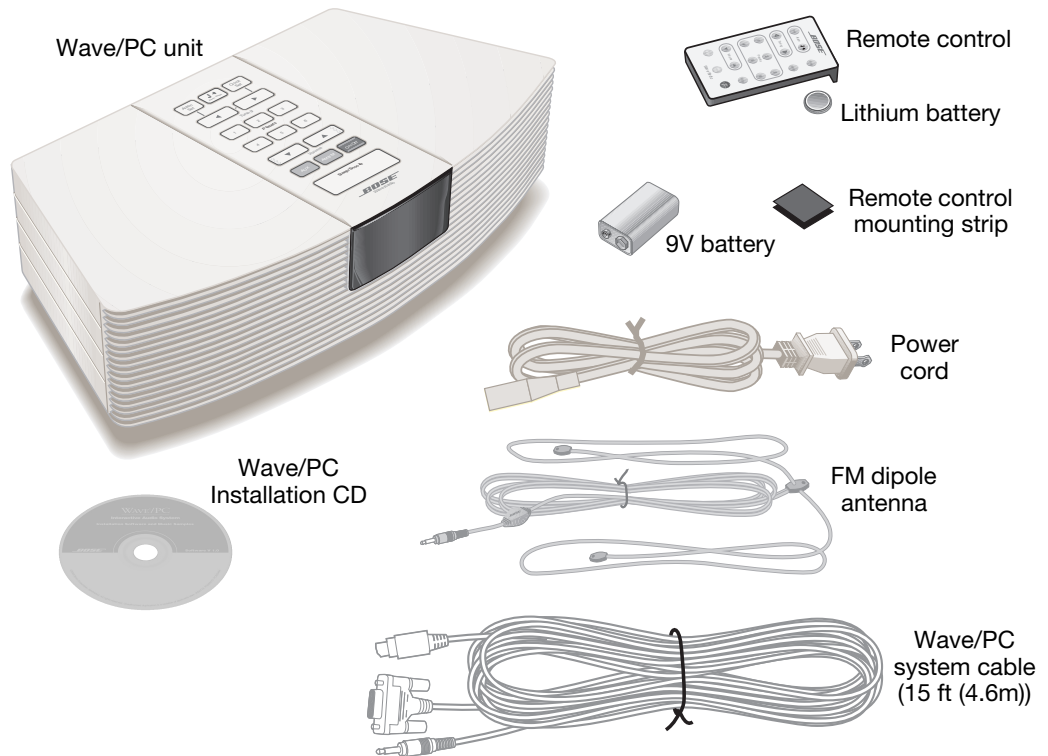
Unpacking the carton

Carefully unpack your system (Figure 1) and save all packing materials. The original packing materials provide the safest way to transport your Wave/PC system. If any part of the product appears damaged, do not attempt to use it. Notify Bose® Customer Service immediately. (See phone number listings on the inside back cover.)

🎵 **Note:** Find the serial number on the bottom of the Wave/PC unit. Write it on your warranty card and in the space provided on page 6.

Figure 1

Carton contents



Selecting a location for the Wave/PC unit

Your Wave/PC unit includes a 15 ft (4.6 m) interface cable allowing for greater flexibility in placement. Feel free to place and position the Wave/PC unit where you find the sound most pleasing. However, keep these useful guidelines in mind when selecting its location:

- 🎵 **Note:** Do not place the Wave/PC unit very close to your computer monitor. Doing so will degrade AM/FM tuner reception.
- Make sure the Wave/PC unit is within reach (15 ft (4.6m)) of your computer.
 - For best performance, place the Wave/PC unit at least 2 ft (61 cm) away from your typical seating position.
 - Do not place your Wave/PC unit on top of the monitor.
 - For best bass performance, locate your Wave/PC unit within 2 ft (61 cm) of a wall.
 - Place the Wave/PC unit on a flat surface.
 - Do not place the Wave/PC unit on a metal surface. Doing so could degrade AM reception.

Setting up the Wave/PC™ remote control

⚠ WARNING: Keep the remote control battery away from children. It may cause a fire or chemical burn if mishandled. Do not recharge, disassemble, heat above 100°C (212°F), or incinerate. Dispose of used battery promptly.

⚠ CAUTION: Danger of explosion if battery is incorrectly replaced. Replace only with the same or equivalent type.

🎵 Note: Some remote control functions will not work until your Wave/PC unit is connected to your computer and the Wave/PC software is installed.

Your remote control may be one of two types. Each is identified by the way the battery compartment unlocks to install or replace the battery (Figure 2 or Figure 3).

1. Place the remote control face down on a flat surface.
2. If your remote has a slot on the back (Figure 2), follow step A. Otherwise, follow step B and refer to Figure 3:
 - A. Insert the tip of a ballpoint pen into the slot. Push to the side (as shown) and hold. Slide the battery compartment open with your finger.
 - B. Using your finger, push the tab lock to the side (as shown) and hold. Slide the battery compartment open.

Figure 2

Locating the slot-type safety lock

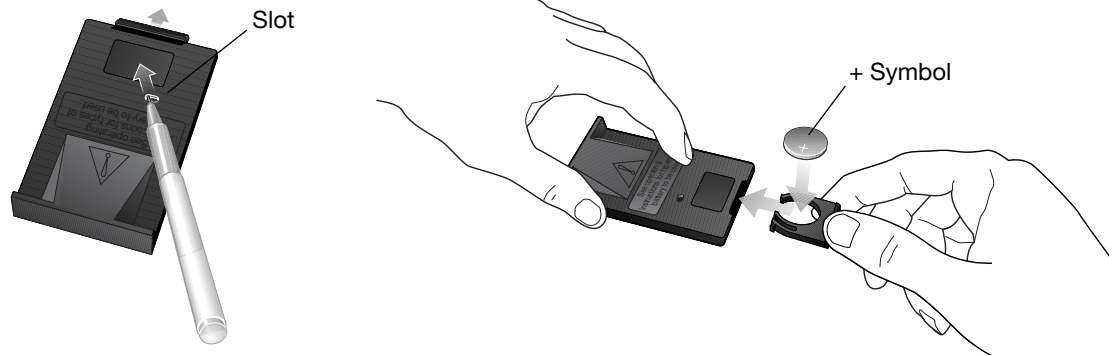
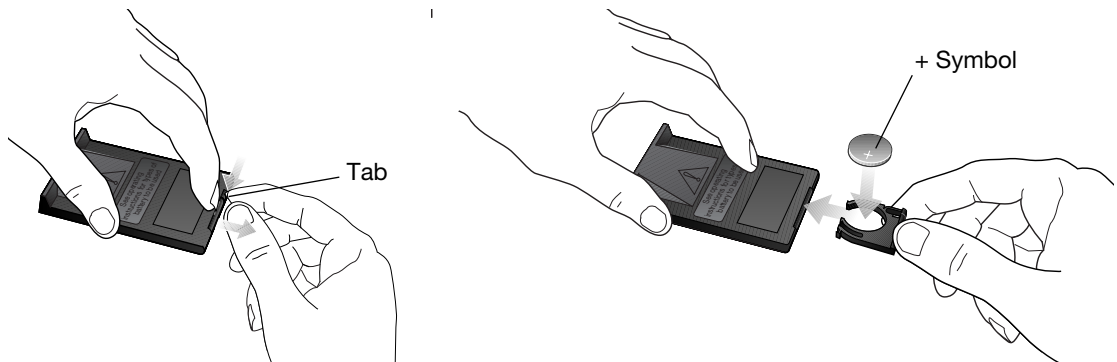


Figure 3

Locating the tab-type safety lock



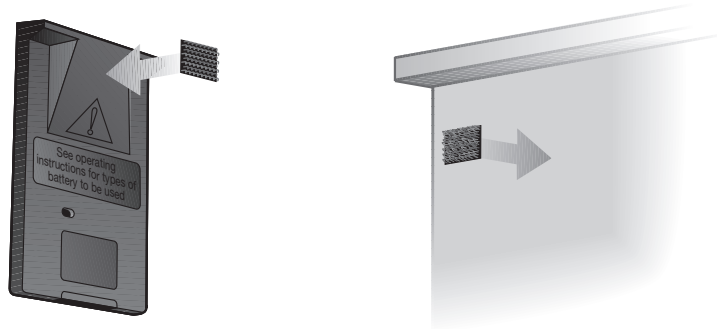
🎵 Note: Use only a Duracell, Eveready, Maxell, or Toshiba CR2032 or DL2032 lithium battery (available at electronics stores). If you have difficulty finding a replacement battery, contact Bose® Customer Service. (See phone numbers on the inside back cover.)

3. Keeping the remote control face down, insert the new battery into the compartment with the + symbol facing up.
4. Gently slide the battery compartment closed. It locks automatically.

- Use the supplied mounting strip if you want to attach the remote to a surface in your listening room. Peel off the protective backing to stick one piece to the back of the remote and the other to the selected surface (Figure 4).

Figure 4

Installing the mounting strip for the remote control



Installing the 9V battery in the Wave/PC™ unit

- WARNING:** Keep the battery away from children. It may cause a fire or chemical burn if mis-handled. Do not recharge, disassemble, heat above 100°C (212°F), or incinerate. Dispose of a used battery promptly. Replace only with a battery of the same type or equivalent.

The 9V battery maintains clock and alarm settings and operates the Wave/PC™ unit's alarm system for approximately 48 hours during a power loss, or while the radio is temporarily unplugged.

- Note:** The battery does not provide power for Wave/PC unit operation or for its display.

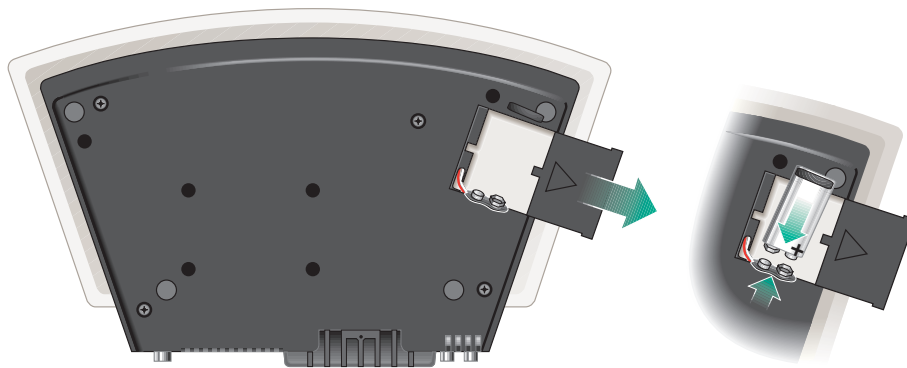
Operating without this battery results in the loss of clock and alarm settings, and preset button settings in the event of a power loss, but does not harm the radio.

Use a standard 9V battery (IEC 6F22 in Europe), available at most retail stores.

- Carefully turn the Wave/PC unit upside down.
- Locate the battery compartment on the bottom (Figure 5).
- Press the arrow on the cover to slide the compartment open.
- Lift the battery clip out of the compartment and align it with the battery as shown. Make sure you match the polarity of the battery with that of the battery clip.
- Snap the battery clip firmly onto the battery.
- Place the battery in the compartment and slide the cover closed. Then turn the Wave/PC unit right side up.

Figure 5

Installing the 9V battery



Connecting the Wave/PC™ unit to your computer

This step tells you how to connect the Wave/PC unit to your computer using the cable supplied with your Wave/PC system. Illustrations of the two most typical computer connection panels are provided (Figure 6 and Figure 7). Refer to the figure that best represents your computer and the following steps.

Note: If you are using stereo speakers with your computer, disconnect them before continuing with this procedure.

1. Turn your computer off.
2. Insert the DIN connector of the Wave/PC system cable into the DIN socket on the rear panel of the Wave/PC unit (Figure 6 or Figure 7).
3. Connect the serial data port (DB-9) connector of the Wave/PC system cable to the serial (RS232) data port of your computer (Figure 6 or Figure 7).
4. Connect the audio plug (3.5 mm) of the Wave/PC system cable to the audio output jack of your computer (Figure 6 or Figure 7).

CAUTION: Do not connect the Wave/PC unit to an AC (mains) outlet until after connecting your Wave/PC unit to your PC.

Figure 6

Example 1: Wave/PC system connections

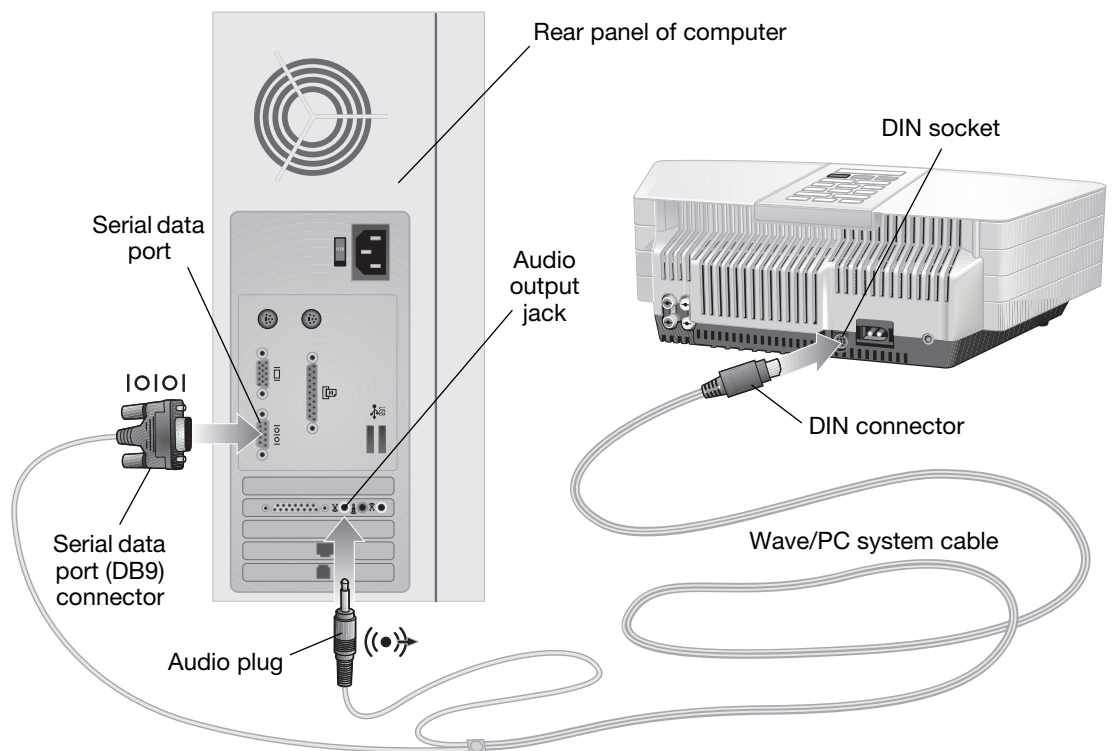
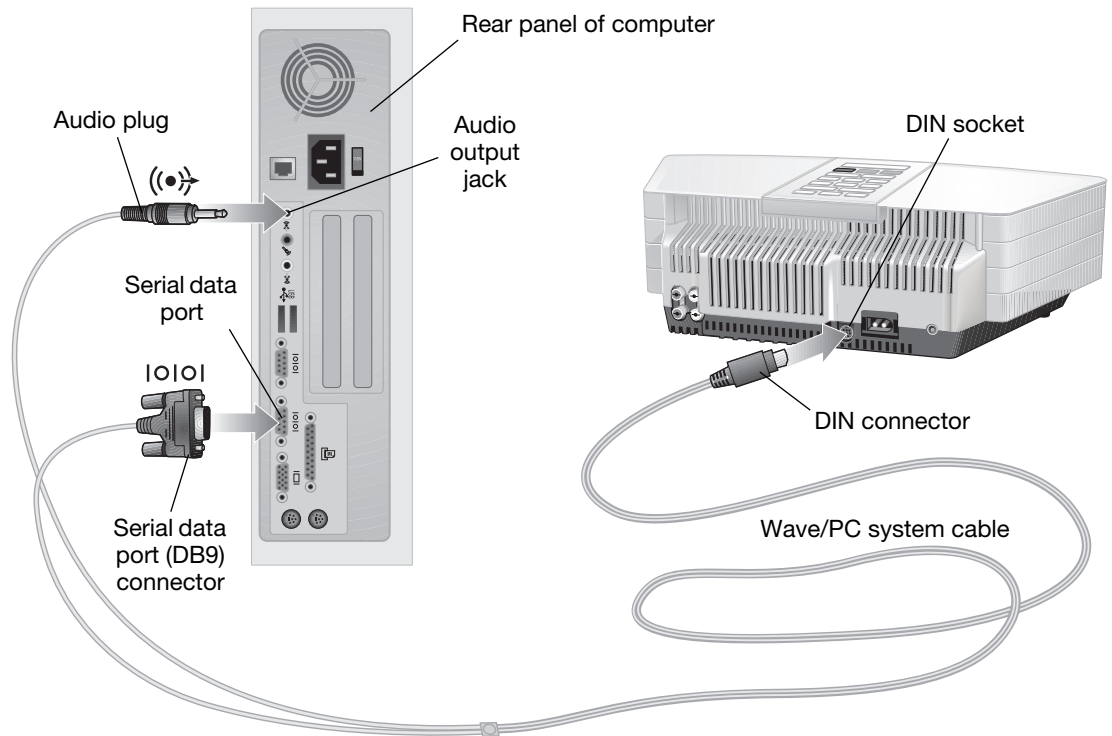


Figure 7

Example 2: Wave/PC™
system connections



Connecting the power cord to the Wave/PC unit

1. Plug the small end of the power cord into the power jack on the back of your Wave/PC unit (Figure 8). The connector is shaped to fit in only one direction. Line up the flat edge of the plug with the flat edge on the side of the jack.
2. Connect the other end of the power cord to an AC (mains) outlet. The clock time display should begin flashing. The flashing will stop during software installation when the clock is set by your computer.

Figure 8

Connecting the power cord



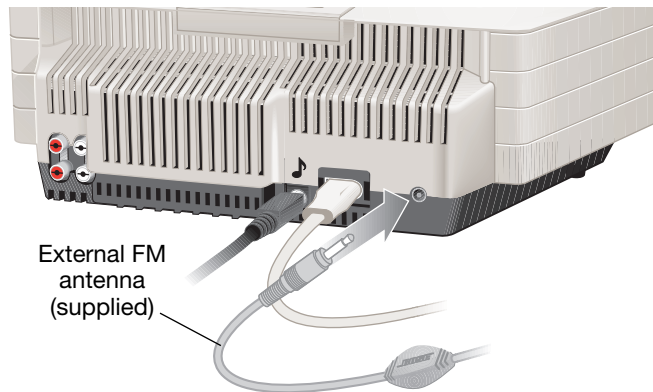
Connecting the external FM antenna

FM radio reception is improved by connecting the supplied FM antenna to the external antenna connector on the back of the Wave/PC™ unit (Figure 9).

🎵 **Note:** *If you are not using the FM dipole antenna, the power cord serves as an antenna.*

Figure 9

Location of external FM antenna connector



Installing the Wave/PC™ application software

The installation CD will install the Wave/PC application software and several music samples on your computer's hard drive. If you have any trouble with the installation, see "Installation troubleshooting" on page 58.

🎵 **Note:** *Before you install the software:*

- Make sure the Wave/PC system hardware is correctly set up before installing the application software (see "Installing the Wave/PC" system hardware" on page 7).
- Make sure your computer has at least 32 MB RAM and 200 MB of free hard drive space.
- Exit all Windows programs and turn off virus detection and screen-saver software. This frees up memory and prevents possible conflicts between the installation and other programs.
- If you are using a portable computer, or any computer with a dial-type volume control, set the volume control to maximum.

1. Turn on your computer.
2. Insert the Wave/PC software CD into your computer's CD-ROM drive. If the install program does not start automatically, go to the **Start** menu and select **Run**. In the Run window, open *d:\Setup.exe*, where *d* is the letter of your computer's CD-ROM drive.
3. Wait while the Wave/PC setup program prepares to install the software.
4. When the End User License Agreement appears, please read it. Then, select "I agree to the terms of this license agreement" and click **Next**.

🎵 **Note:** *If you do not agree with the license agreement, the setup program will not proceed.*

5. The "New Installation" dialog box appears with a description of the installation process. Click **Next** to continue.
6. In the "Directory Selection" dialog box, click **Next** to accept the default directory, or click **Browse** to select another directory, and then click **Next**.
7. In the "Bose® Music Collection" dialog box, select one of the options (to install the music files or not). Click **Next** to accept the default destination directory, or click **Browse** to select another directory, and then click **Next**.

- ♪ **Note:** If the **Next** button is not available, check to see if your computer's hard drive has at least 200 MB of free storage space.
8. In the AM/FM station tables dialog box you can choose to install station tables for the entire US (occupies an additional 150 MB of disk space) or just your local area. Select one and click **Next**. Setup proceeds to install the software and related components.
 9. Select one of the restart options. When you are ready to restart your computer, remove any disks from their drives and click **Next**.
 10. After restarting your computer, wait while the Windows operating system begins to configure your system. It may take a minute or two for the installation to continue.
- ♪ **Note:** After restart, if the Wave/PC™ system cable is not correctly installed, you are prompted to make the necessary connections before proceeding. Follow the instructions on the screen. If necessary, refer to "Connecting the Wave/PC™ unit to your computer" on page 10. When you see "Connection Established", click the **Next** button.
11. When you see the "Check your sound card connection" dialog box, you should hear music playing. If so, your audio connection is correct. If you cannot hear the music, try moving the volume slider control to raise the volume. If you still do not hear music, check your audio connection again. See "Connecting the Wave/PC™ unit to your computer" on page 10, or refer to the user's guide for your computer.
Click **Next** to start a volume calibration and continue.
 12. Choose a way to register your product:
 - Select "Connect to the Internet now. Register the product and get the latest station information now." Click **Next** to continue.

OR

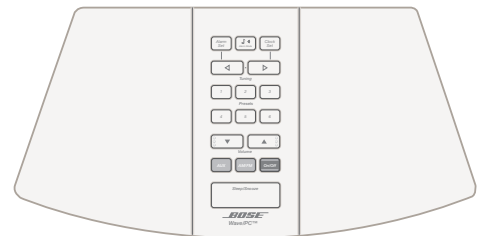
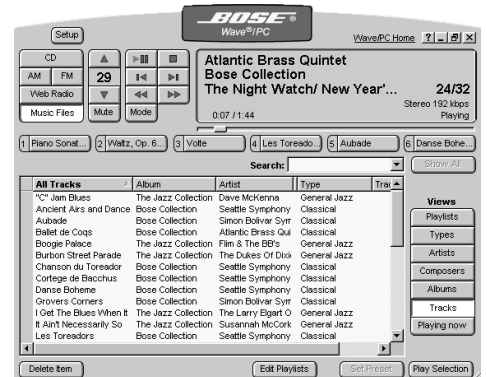
 - Select "Work offline. Establish an Internet connection later. Get station information from the installation CD." Click **Next** to continue.
- ♪ **Note:** Product registration requires an Internet connection. If you are required to launch a separate application for connecting to the Internet, do so now.
- Registration information is used to configure your Wave/PC system and provide product support. The registration process also enables some basic functionality, such as the CDDB lookup feature. If you do not register, the CDDB lookup feature will not work.*
- The information gathered during registration is for the sole use of Bose Corporation and CDDB, Inc. CDDB is a free on-line service that provides artist, title, track, and other information about the CDs you play. For more information, see "Using CDDB" on page 23.*
13. Enter your registration information.
 - A. Enter your first name, last name and E-mail address. Click **Next**.
 - B. Enter your ZIP code. All other fields are optional. Click **Next**.
 - C. Select any or all of the next four options and click **Next**.
 - D. The setup program logs on to the Bose® server and uploads the registration information. AM/FM and Web Radio station information is downloaded.
 14. When prompted, insert the Wave/PC installation CD into the CD-ROM drive to begin the CD-ROM drive test. This test determines if your CD-ROM drive supports digital audio playback and recording. When the test is finished, the results are shown. To understand the CD-ROM test results, see "To test your CD-ROM drive:" on page 26. Click **Next** when you are ready to continue.
 15. Click **Begin** to start scanning for AM/FM radio stations in your local area. When the scan is done, the program advances to the next step.

16. In this step, the setup program searches your hard drive for any music files you may already have:
 - A. Select the types of music files to include in your search. You can select MP3 or WAV. By default, only MP3 is selected.
 - B. Specify the minimum file length. When importing files, you may want to exclude short files containing operating system or game sounds. By default, the search process ignores files less than 20 seconds long.
 - C. Specify the folders or directories to search. Use the **Add Folder**, **Edit Folder**, and **Delete Folder** buttons to edit the list. Use the check boxes to the left of the directory names to temporarily select/unselect folders.
 - D. Click the **Search** button. A progress dialog box pops up to keep you informed of the search status. When finished, the progress box displays the number of files found and the number added to the music finder database. You may notice that not all files found were added to the music finder database. This can happen if the file already exists in the database or if the file length is less than the specified minimum.
 - E. Click the **Done** button when the search is complete.
17. Click **Finish** to exit the setup program and launch the Wave/PC™ application.

The Wave/PC™ system controls

You can find controls for your Wave/PC interactive system in three locations:

- **The Wave/PC software application window** – This is the main user interface for the Wave/PC system. It provides you with the controls you need to play and record CDs, create your own playlists, and maintain your music library. For more details, see “Wave/PC™ application window” on page 16.
- **The Wave/PC remote control** – The remote control provides you with the necessary controls for listening to the CD tracks, music files, AM/FM stations, or Web broadcasts that you have built into your music library. For more details, see “Wave/PC™ remote control” on page 17.
- **The Wave/PC unit control panel** – Like the remote control, this panel provides controls for selecting and listening to items from your music library. In addition, it has control buttons for setting and operating the clock and alarms. Clock and alarm times can only be set from this control panel. For more details, see “Using the Wave/PC™ Unit Controls” on page 47.



Turning your Wave/PC system on and off

There are three ways to turn your Wave/PC system on or off:

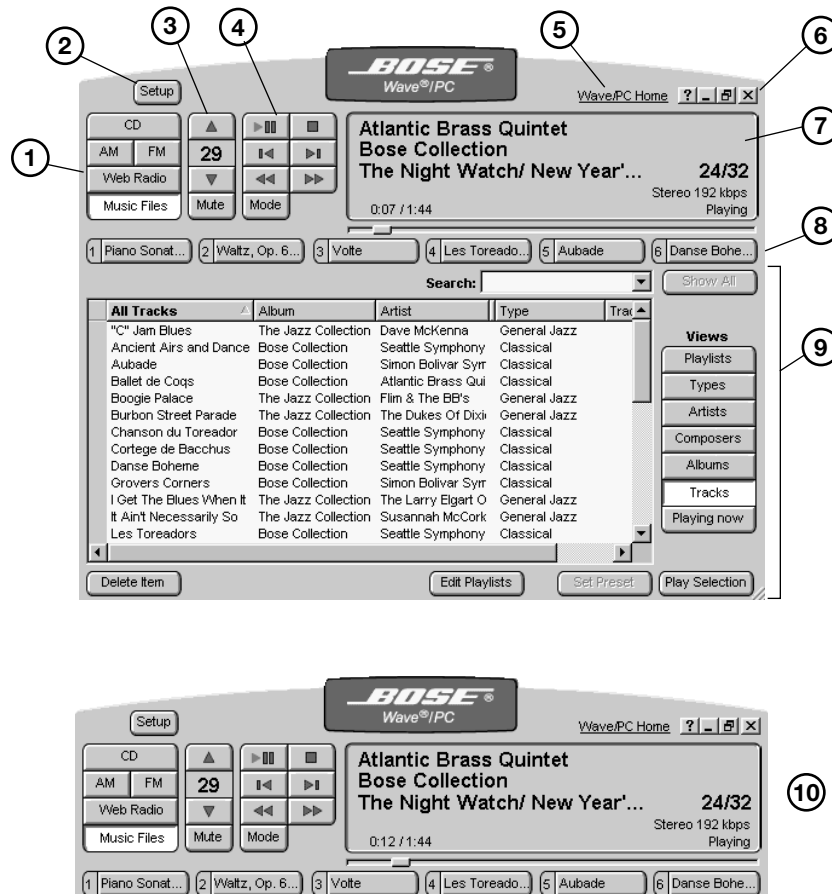
<p>1 Using the Wave/PC Application Icon</p>	<p>2 Using the Wave/PC Remote Control</p>	<p>3 Using the Wave/PC Monitor Icon</p>
<p>To turn the system on, double-click the Wave/PC application icon on the desktop. To turn the system off, click the close (X) button in the Wave/PC application window.</p>	<p>To turn the system on, point the remote control at the front of the Wave/PC unit and press the On/Off button. To turn the system off, press the On/Off button again.</p>	<p>To turn the system on, double-click the Wave/PC monitor icon in the Windows Task bar, or right-click the monitor icon and select Start Bose® Wave®/PC. To turn the system off, click the close (X) button in the Wave/PC application window.</p>


Wave/PC™ application window

Figure 10 shows you the Wave/PC application window and describes the features and controls. Controls can also be accessed using right-click menus. Right-click anywhere in the blue background of the window to open these menus.

Figure 10

The Wave/PC application window



- ① **Music source selection buttons** – Selects the CD, AM, FM, Web Radio, or Music Files music source. When a source is selected, the Wave/PC application window changes to show source-related controls.
- ② **Setup button** – Opens the setup options window for the selected source.
- ③ **Volume control buttons** – Raises, lowers or mutes the volume of the Wave/PC unit.
- ④ **Music source control buttons** – Controls the selected music source. This set of buttons changes for each source.
- ⑤ **Wave/PC Home** – Links you to the Bose® Wave/PC system owner's web site.
- ⑥ **Window control buttons** – Provides standard window control buttons: What's this? Help, Minimize, Resize and Close.
- ⑦ **Information window** – Shows you the status of the active music source.
- ⑧ **Six preset buttons** – Selects or stores up to six presets for AM, FM, Web Radio, and Music Files.
- ⑨ **Music finder window** – Shows you the music selections available for the active source and the source-related control buttons.
- ⑩ **Small application window** – Small view of the Wave/PC window, created by clicking the resize button ().

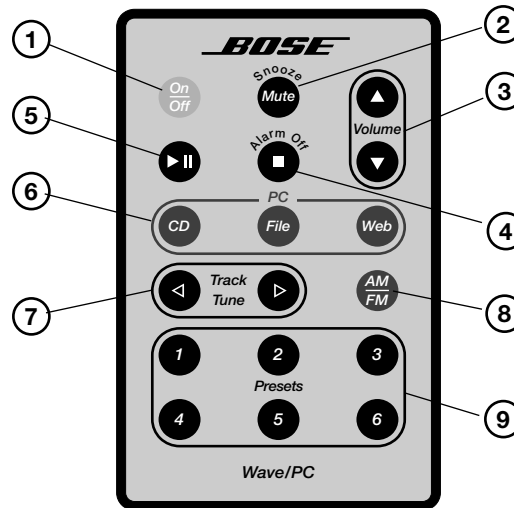
Wave/PC™ remote control

You can use the Wave/PC remote control (Figure 11) to operate some of the basic functions included in the Wave/PC system application window. Aim the remote control at the front of the Wave/PC unit and press the button for the function you want.

The remote normally works up to 20 feet (6.1 m) in front of the radio, and six feet (1.8 m) from either side. Replace the remote control battery when the remote stops operating, or its range seems reduced (normally every year or two). Keep in mind that lighting and other room conditions, in addition to battery age, can affect the operating range of an infrared remote control.

Figure 11

The Wave/PC remote control functions



-
- ① **Power On/Off** – Turns Wave/PC system on (launches application) or off (closes application).
-
- ② **Mute (Snooze)** – Silences the audio of the Wave/PC unit (pauses the alarm for 10 minutes).
-
- ③ **Volume** – Raises, lowers or mutes the volume of the Wave/PC unit.
-
- ④ **Stop (Alarm Off)** – Stops playback of the active source (turns off a sounding alarm).
-
- ⑤ **Play/Pause** – Plays/pauses a track, music file, or Web station.
-
- ⑥ **CD/File/Web music sources** – Selects one of the computer-related music sources: CD player/recorder, Music Files, or Web Radio (computer connection required).
-
- ⑦ **Track/Tune** – Tunes up/down the band for AM/FM, or selects next/previous item for CD, File, or Web.
-
- ⑧ **AM/FM** – Selects the AM or FM tuner in the Wave/PC unit.
-
- ⑨ **Presets** – Selects or stores up to six presets for AM, FM, Web Radio, and Music Files.
-

Wave/PC™ system audio and your computer system

After installing the Wave/PC interactive audio system, the Wave/PC unit becomes the default speakers for your computer. This means that sounds generated by your computer system are delivered to you through the Wave/PC unit.

Sound sources and quality

When playing an AM/FM radio station what you hear is generated by the Wave/PC unit. However, when listening to a CD, Web Radio station, or a music file, the audio you hear is generated by your computer, not the Wave/PC unit. Because the audio is computer generated, certain factors affect the sound quality. For example, when the computer is busy printing or scanning you may experience audio drop-outs.

The audio from a Web Radio station is delivered over an Internet connection. While using an Internet connection, you can experience delays, periodic drop-outs and even disconnection. This can affect the quality and continuity of Internet audio broadcasts. The ability of your Wave/PC system to play and record CDs, or play music files, is limited by the capabilities of your computer hardware and software components.

Getting the best possible sound quality

Your computer hardware is assessed during installation of the Wave/PC software. This is done to make sure that the Wave/PC system is fully operational within the limitations of your computer hardware and software components. Upgrading your computer hardware with a better sound card, more RAM, and a faster CD-ROM drive, hard drive or modem, can improve the sound quality and overall performance of your Wave/PC system. For more information, refer to your computer manufacturer.

While using the Wave/PC system, you can optimize the sound and overall performance of the system by minimizing the number of tasks being performed by your computer. Traditional background software applications, such as e-mail or web browsers, have a minimal effect on Wave/PC system performance when they are not in the process of moving large amounts of information.

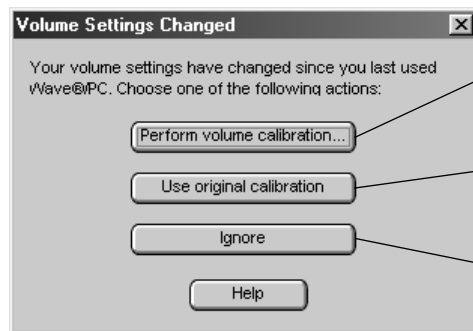
Changes in volume settings

When you installed the Wave/PC software application, the volume settings were automatically calibrated. This calibration matched the relative volume level of computer-generated audio with the audio generated by the AM/FM tuner in the Wave/PC unit. If you change the volume level on your computer (such as in the Task bar) outside of the Wave/PC application, these volume levels will no longer match.

If the volume levels are unmatched the next time you open the Wave/PC application, the dialog box in Figure 12 opens. Select the appropriate action.

Figure 12

Options when volume settings no longer match

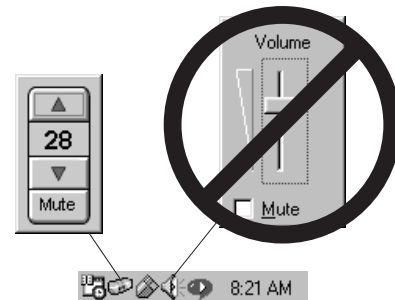


Calibrates the volume settings (see "Setting general setup options" on page 44).

Restores the volume control settings obtained from the last volume calibration.

Leaves the volume control in the current uncalibrated setting.

Note: After installing the Wave/PC system application, use the Wave/PC system volume control on your computer to adjust the volume level. Right click on the Wave/PC monitor icon in the system tray to bring up the volume control buttons.

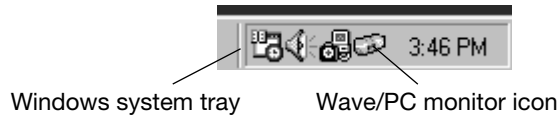


The Wave/PC™ system monitor

The Wave/PC application software includes a program called the Wave/PC Monitor which was installed during the software installation process. This program runs in the background whenever your computer is on and enables the computer-generated audio to play through your Wave/PC unit. A status icon (Figure 13) for this program appears in the portion of the Windows Task bar where the clock is located.

Figure 13

Location of the Wave/PC monitor icon



Normal operation

During normal operation, you should always see the Wave/PC monitor icon in the Windows Task bar. This icon indicates that your computer and the Wave/PC unit are synchronized, and as long as the Wave/PC monitor is running, your computer uses the Wave/PC unit for its speakers. This means that sounds generated by your computer are heard through the Wave/PC unit. You can adjust your computer's volume at any time using the volume buttons on the remote control or the Wave/PC unit control panel. Also, you can click the Wave/PC monitor icon and use the up/down buttons in the pop-up volume control. The Wave/PC system also acts as your computer speakers even when the Wave/PC application is not running.

If you right-click the Wave/PC monitor icon, you can either start the Wave/PC application, or exit the Wave/PC monitor program.

♪ **Note:** If you exit the Wave/PC monitor, the sounds played by your computer will no longer be heard through your Wave/PC unit.



If you see the icon with a yellow question mark

If you see a yellow question mark appear over the Wave/PC monitor icon, this means the Wave/PC monitor is running but it can't synchronize with the Wave/PC unit. Some possible causes for this problem are:

- The Wave/PC unit is not connected to your computer
- The Wave/PC unit is unplugged
- The serial port of your computer is disabled
- The serial port of your computer is being used by another program

♪ **Note:** Make sure your Wave/PC unit is correctly connected to your computer and a serial port is available. Click the **Setup** button and click the **General** tab. Then click the **Search for Wave/PC** button.



If you see the icon with a red exclamation mark

A red exclamation mark over the Wave/PC monitor icon means there is a software problem and the Wave/PC application cannot be launched. To try to correct this problem, restart your computer. If the problem persists, contact Bose® Customer Service.

If the Wave/PC monitor icon is missing

If the Wave/PC monitor icon is not present in the Task bar, the Wave/PC monitor is not running, and therefore, the Wave/PC unit is not synchronized with your PC. The sounds played by your computer will not be heard through your Wave/PC unit. To start the Wave/PC monitor again, double-click the Wave/PC icon on the desktop to start the Wave/PC application. The Wave/PC monitor icon should reappear in the Task bar.

Playing an audio CD

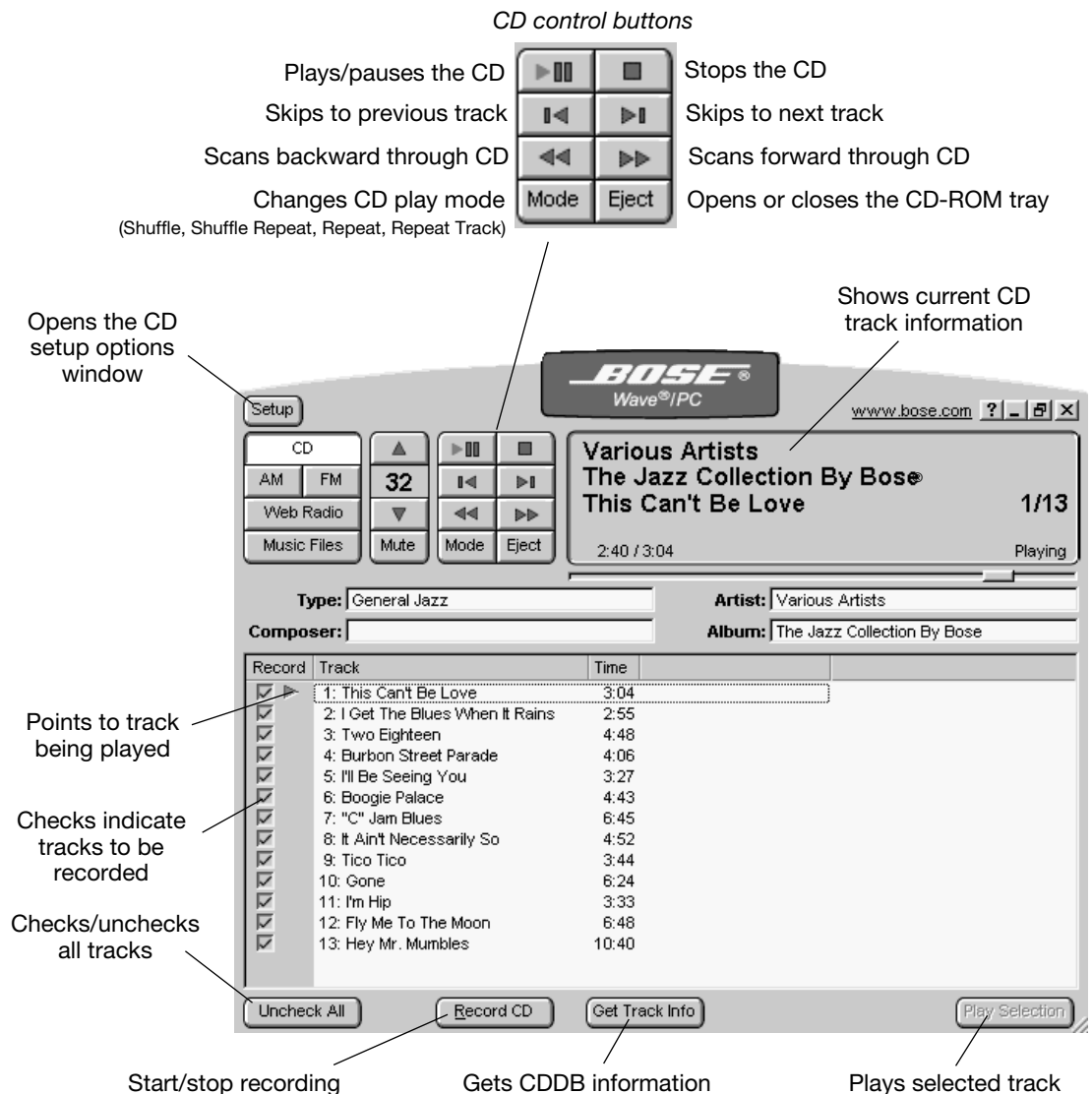
The Wave/PC™ interactive audio system can play any audio CD. Whenever you insert a CD into your computer's CD-ROM drive, the Wave/PC system automatically selects the CD player (Figure 14) and begins playing the CD.

When the Wave/PC system plays a CD for the first time, and you have an Internet connection, the application automatically links your computer to a free Internet database service, called CDDB, and downloads CD track information. CDDB is a large on-line repository that provides artist, title, track, credit, and other information about the CDs you play. For more information about CDDB, see "Using CDDB" on page 23.

Note: The check marks appearing in the check column of the music finder window are used to select tracks you want to record. To record your CD, see "Recording an audio CD" on page 22.

Figure 14

CD player/recorder window



Playing tracks from the music finder window

The music finder gives you great flexibility in playing single or multiple music selections.

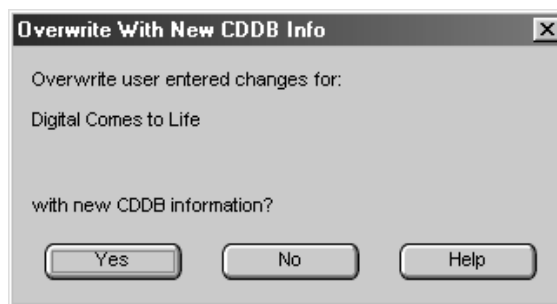
- *To start playback:* Double-click the first title you want to play, or select the first title and click the **Play/pause** (▶) button.
- *To play only a single track:* Select the title and click the **Play Selection** button.
- *To play a consecutive list of tracks:* Select the first track you want to play. While holding down the shift key, select the last track you want to play. Click the **Play Selection** button.
- *To play a non-consecutive list of tracks:* Hold down the control key on your computer keyboard and click on each song title you want to play. Click the **Play Selection** button.

Editing CD track titles

The CD track titles listed in the music finder window are from downloaded CDDB data. You can edit a CD track title by right-clicking the track title and selecting **Edit Entry**. Type the new information and press the **Enter** key when you are done. However, the next time you click the **Get Track Info** button, the Wave/PC application detects that the downloaded CDDB data does not match the information displayed for your CD. The dialog box in Figure 15 opens and asks you if you want to overwrite your CD data with new CDDB data. This can also occur if new data is available from CDDB. Click **Yes** to overwrite the title using CDDB information, or click **No** to leave the new title unchanged.

Figure 15

CDDB overwrite dialog box



Changing the CD play mode

Clicking the **Mode** button selects the play mode of the CD player. The selected mode appears in the information window and affects the whole CD or the currently selected track(s). Each click of the button cycles the mode setting through five settings:

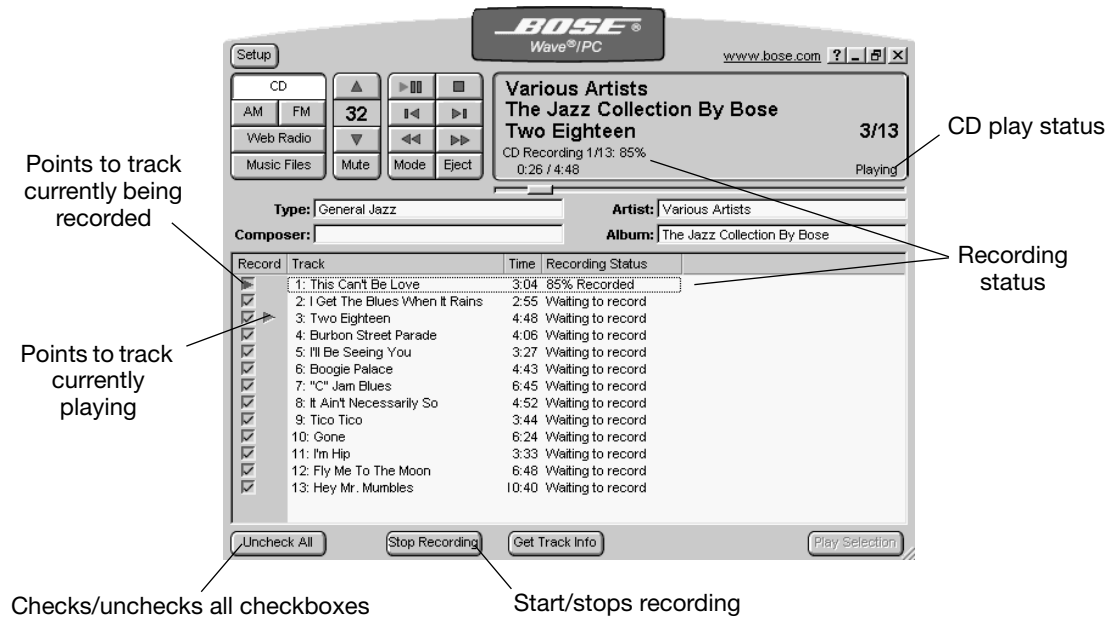
- **Shuffle CD** plays all tracks randomly
- **Shuffle Repeat CD** repeats the disc in a new random order each time
- **Repeat CD** plays the disc continuously
- **Repeat Track CD** plays the selected track continuously
- **Blank** for normal play

Recording an audio CD

In addition to playing CDs from your computer's CD-ROM drive, you can record and save them as music files on your computer's hard drive. When you insert a CD into your computer's CD-ROM drive, the Wave/PC™ software prepares itself to record all tracks on the CD. It indicates this by placing a check mark next to each track title in the music finder window (see the **Record** column in Figure 16).

Figure 16

Example of the application window when recording a CD



Before you start recording

Make sure the tracks you want to record have a check mark next to the track. If there are some tracks you do not want to record, click the checkbox beside the track to clear the check mark.

Starting the recording process

Note: A CD is recorded as a background operation. If you wish, you can listen to another source while recording your CD.

To start recording, click the **Record CD** button. During the recording process, this button becomes **Stop Recording**. You can stop recording at any time by clicking this button. To resume recording, click the **Record CD** button again.

While recording, the status of each track is reported in the **Recording Status** column:

Recording Status	Meaning
XX% Recorded	The percentage of the track recorded.
Waiting to record	The track is unrecorded. It has been selected and is waiting to be recorded.
Recorded	This track was successfully recorded during this recording session.
Error (not recorded)	This track could not be successfully recorded. Bad or dirty CD.
[Blank]	This track is not selected for recording and it has not been recorded in a previous recording session.

Recording CDs when disconnected from the Internet

If your computer is disconnected from the Internet and you insert a CD into the CD-ROM drive, the track titles are numbered because CDDB information cannot be downloaded. However, you *can* record the CD and get CDDB information the next time you go on the Internet.

The next time you connect to the Internet, select the CD player, insert any CD and click the **Get Track Info** button. This automatically updates the Wave/PC™ database with CDDB information for all previously recorded CDs. Now, when you use the Music Files player to find these recorded tracks, they will no longer be numbered, but have actual titles.

Playing your recorded CD tracks

After recording your CDs, click the **Music Files** button to find your recorded tracks and start playing them. See “Selecting the Music Files player” on page 27 for instructions.

Playing MP3 CDs

To play MP3 files from a CD, insert the CD into the CD-ROM drive and click the CD button. The MP3 files found on the CD will be displayed in the music finder window. See the example in Figure 17.

Click the plus sign [+] to open an album or collection of MP3 music. Select the file you want to play and click the **Play Selection** button. The file currently playing is highlighted.

Figure 17

Example music finder window for a data CD



Using CDDB

The Wave/PC interactive audio system uses the CDDB² Disc Recognition ServiceSM (DRS) from CDDB, Inc. to get the artist, title, track, credit, and other information about the CDs you play. This service is FREE and automatic. The first time you use the service, the Wave/PC software application automatically registers you with CDDB. You do not have to re-register, unless you want to change your registration information or settings.

To change your CDDB registration information:

Right-click on the blue background of the Wave/PC application window and select **CD info>CDDB Registration**.

To see or edit the full CDDB² information for a CD:

Right-click on the blue background of the Wave/PC application window and select **CD info>Extended information**.

For more complete instructions on using the CDDB service, see the CDDB help page (www.cddb.com/cddb2info/using.html) on the Internet.

Setting CD player/recorder setup options

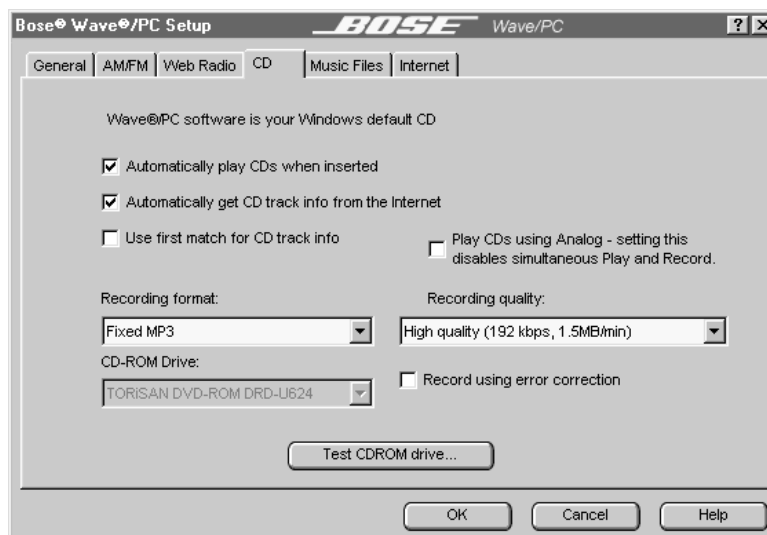
To access the CD player/recorder setup options (Figure 18) and change the configuration, click the **Setup** button and click the **CD** tab.

After selecting the options you want,

- Click the **OK** button to save your settings and close the setup window, or
- Click the **Cancel** button to close the setup window without saving any changes, or
- Click the **Help** button to open the on-line help information window.

Figure 18

CD player/recorder setup options (Wave/PC™ system is the default CD player)

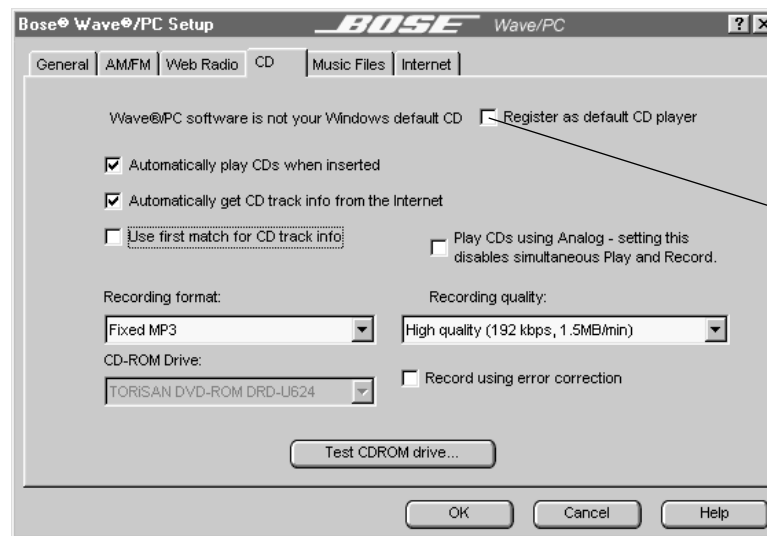


Wave@PC software is your Windows default CD

The default CD player in your computer system is the application that launches automatically, in the CD mode, when you insert an audio CD in your CD-ROM drive. If your Wave/PC system is not your default CD player, the CD setup window provides a checkbox (Figure 19) for changing this option. Click the checkbox, and then click the **OK** button to make the Wave/PC system your default CD player.

Figure 19

CD player/recorder setup options (Wave/PC system is not the default CD player)



Click this checkbox to make the Wave/PC system your default CD player.

Automatically play CDs when inserted

By default, when you insert an audio CD into your computer's CD-ROM drive, the Wave/PC™ system automatically switches to the CD mode and starts playing the CD. To disable automatic playing, remove the check next to "Automatically play CDs when inserted."

Automatically get CD track info from the Internet

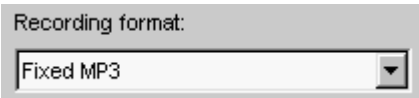
Normally, when the Wave/PC system plays a CD for the first time, the Wave/PC application downloads detailed information for that CD from the CDDB website. If you do not want the Wave/PC application to do this, remove the check next to "Automatically get CD track info from the Internet." If this option is unchecked, you can get CD information anytime by clicking the **Get Track Info** button in the CD application window.

Use first match for CD track info

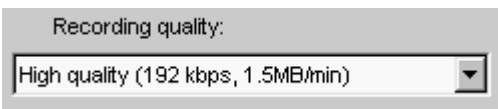
When you click the **Get Track Info** button, the CDDB Internet service may find more than one match for some of your song titles. To limit your request to only the first match found, make sure you select "Use first match for CD track info." If you choose not to select this option, you will be prompted by CDDB to select one item from the list.

Play CDs using Analog - setting this disables simultaneous Play and Record.

When this checkbox is selected, CDs are played using the analog output of the CD-ROM drive. Otherwise, digital extraction is used when playing CDs. This setting does not affect the CD recording process. However, when selected, simultaneous playback and recording of CDs is not allowed.



The recording format drop list offers you a choice of audio file formats: Fixed MP3, Variable MP3, or WAV (uncompressed). Fixed MP3 is recommended. It is more compatible with other devices, such as portable MP3 players.



The recording quality drop list allows you to select the quality level for recording. The available levels vary according to the recording format you choose. In general, the higher the bit rate, the better the sound quality but the larger the audio file size.

Quality Level	Bit Rate Encoding (kilo-bits/sec.)	MBytes per min. of play
Low	64 kbps	0.5MB/min.
Medium	128 kbps	1MB/min.
Medium-high	160 kbps	1.25MB/min.
High (default)	192 kbps	1.5MB/min.
Higher	256 kbps	2MB/min.
Highest	320 kbps	2.5MB/min.

Record using error correction

Select "Record using error correction" to decrease the probability of audio errors during recording.



The Wave/PC™ application can test your CD-ROM drive to determine its digital audio extraction speed and tell you whether or not it can support simultaneous record and playback.

To test your CD-ROM drive:

1. Insert the Wave/PC installation disk in your CD-ROM drive.
2. If you have more than one CD-ROM drive, select the drive you will use to play CDs from the CD-ROM Drive drop list. If you do not select a drive, the software will choose the drive with the lowest letter. (If you have a single drive in your computer, the drop list is hidden.)
3. Click the **Test CDROM drive** button.
4. Click the **Begin** button in the CD-ROM Drive Test window.
5. When the test is complete, the results are shown.

The results may describe one of the following three conditions:

Displayed Results	Meaning
Digital audio extraction speed [0 to <1.1]X. It appears that the CD-ROM drive does not support digital audio. You will most likely not be able to record or playback.	Your CD-ROM drive is too slow. You will need to upgrade your CD-ROM drive to record CDs.
Digital audio extraction speed [1.1 to <3]X. The CD-ROM drive supports digital audio. However, it does not appear fast enough to simultaneously record and playback.	Your CD-ROM drive is not fast enough to playback and record at the same time. In order to record your CDs, you will need to stop playback.
Digital audio extraction speed [3 and greater]X. The CD-ROM drive supports digital audio. It appears to be fast enough to simultaneously record and playback.	You can record and playback CDs at the same time.

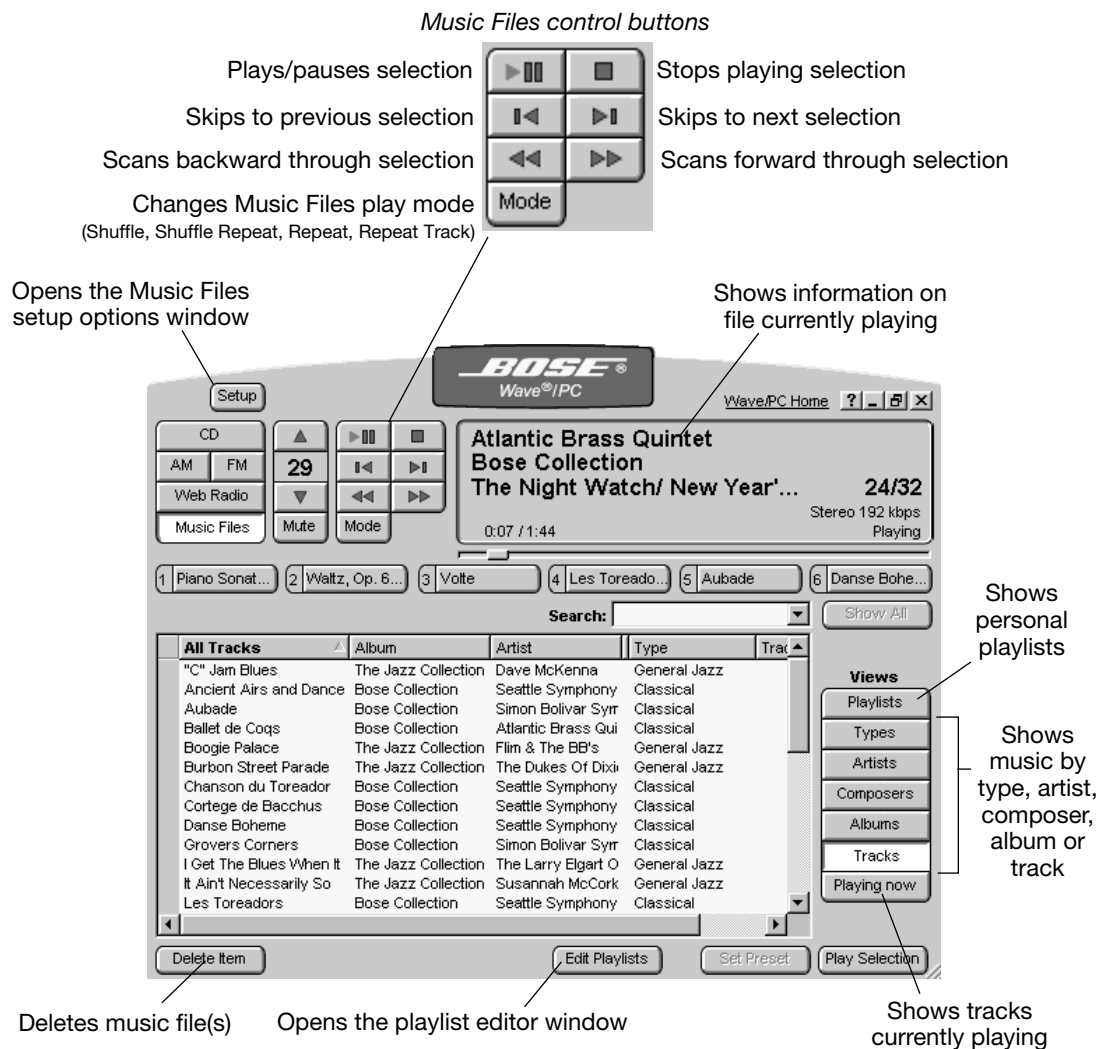
Selecting the Music Files player

The Music Files player gives you one-touch selection of any MP3 or WAV file stored on your computer's hard drive. To select the Music Files player (Figure 20), click the **Music Files** button on the Wave/PC™ application window, or press the **File** button on the remote control to start playing music recorded on your hard drive. For your convenience, the Wave/PC system also provides six preset buttons each of which can be assigned to play any music file or playlist. For example, you could assign preset button 1 to play your classical collection, preset button 2 to play your favorite artist collection, and preset button 3 to play your favorite album.

You can play music files downloaded from the Internet, or transferred from an MP3 CD. During installation, the Wave/PC software scans your computer's hard drive for any existing music files. All files found are automatically added to the Wave/PC music database.

Figure 20

Music Files player mode



Navigating the music finder

The music finder makes it easy for you to view your music database and find the music you want to hear. The music database is organized into a hierarchy of views (Figure 21) to group your music into logical collections.

- **Types** – categories or genres of music (Highest level)
- **Artists** – those who perform the music
- **Composers** – those who wrote the music
- **Albums** – names of music collections
- **Tracks** – individual songs (Lowest level)

You can view your music in each grouping by clicking the appropriate **Views** button located to the right of the music finder in the application window. For example, if you select the classical category in the Types view and then click the **Artists** button, all your classical artists appear in the music finder. If you click the **Composers** button and select a composer from the list, and then click **Albums**, all albums with music by this composer are listed. You can also skip levels. For example, if you select Classical in the Types view, you can then click the **Tracks** button to display all your classical tracks.

You can move down through the hierarchy of views quickly by double-clicking an item in the current view. For example, double-clicking the classical category in the Types view displays all your classical artists. Double-clicking one of your classical artists displays all albums containing tracks by that artist. The detailed rules for double-clicking down through the hierarchy are given in Figure 21.

Figure 21

Moving down through the Music finder views

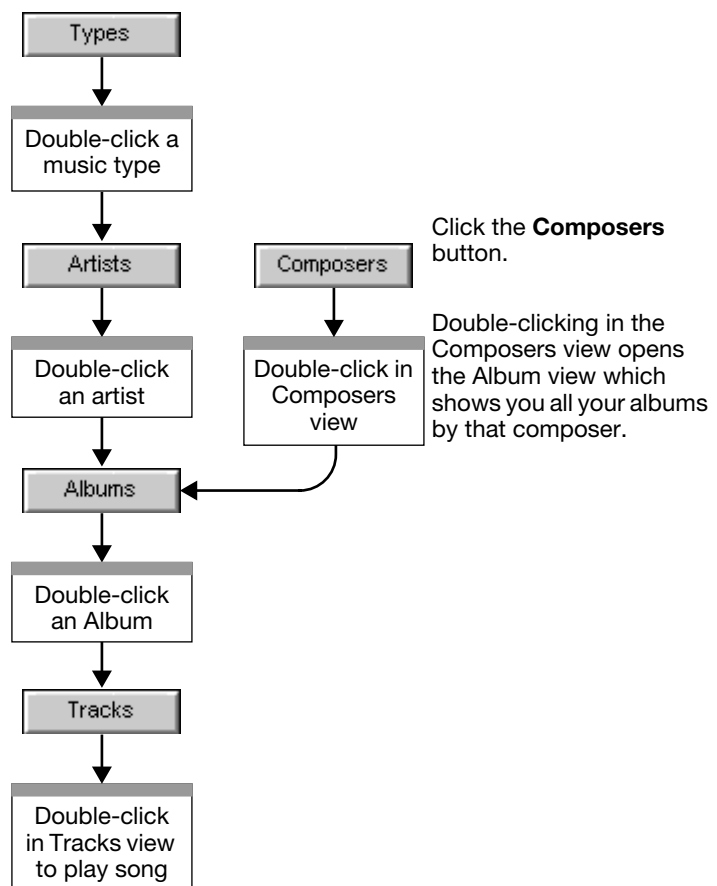
Click the **Types** button.
(Highest level)

Double-clicking in the Types view opens the Artists view which shows you artists who perform that type of music.

Double-clicking in the Artists view opens the Albums view which shows you all your albums containing tracks by that Artist.

Double-clicking in the Albums view opens the Tracks view which shows you all tracks in that album.



Double-clicking an item in Tracks view starts the song playing.



Sorting lists in the music finder window

You can sort the list in the music finder window by column heading in ascending or descending order. Click on a column heading and you'll see a small triangle appear on the right-hand side of the heading. The sorting order is indicated by the direction of the triangle. Click the heading again to change the sorting order.

Sorting Example:

- Sorting album names in ascending order: 
- Sorting album names in descending order: 

Finding music with the search function

The fastest way to find music in your database is to use the search function. The Search box is located at the upper right corner of the music finder window.

Select the view you want to use for your search. In the Search box, type the name of the artist, composer, album, or track. As you type, the music finder will display only the entries with matching text. The matching text is displayed in red.

 **Note:** Pressing **Enter** starts play at the top of the list.

Clicking the **Show All** button clears the Search box and any other search criteria in the music finder. This causes the music finder window to display all the music in the selected view.

Selecting items in the music finder window

You can make single or multiple selections in the music finder window. You can select a single item by clicking on it once. While holding down the shift key you can select a continuous range of entries. While holding down the control key you can click on items not within a continuous range and add them to the selection.

To play a specific song/track:

1. Click the **Tracks** button. A list of track titles is displayed in the music finder.
2. Click the **Show All** button. This cancels any active search criteria and ensures that the window shows all tracks.
3. Type the track name (or part of the name) in the Search box. As you type, the music finder will reduce the number of displayed tracks to only those that contain the string of characters entered in the Search box.
4. Double-click the track title, or select the track and click the **Play Selection** button.

To find and play a specific Album/CD:

1. Click the **Albums** button. A list of album titles is displayed in the music finder.
2. Click the **Show All** button. This cancels any active filtering and ensures that the window shows all albums.
3. Type the album name (or part of the name) in the Search box. As you type, the music finder will reduce the number of displayed albums to only those that contain the string of characters entered in the Search box.
4. Select the album and click the **Play Selection** button.

To find and play all music performed by a specific artist:

1. Click the **Artists** button. A list of artists' names is displayed in the music finder.
2. Click the **Show All** button. This cancels any active filtering and ensures that the window shows all artists.
3. Type the artist's name (or part of the name) in the Search box. As you type, the music finder will reduce the number of displayed artists to only those that contain the string of characters entered in the Search box.
4. Select the artists and click the **Play Selection** button.

To find and play all the music of a certain type (jazz, rock, etc.):

1. Click the **Types** button. A list of music types is displayed in the music finder.
2. Enter the music type name (or part of the name) in the Search box. As you type, the music finder will reduce the number of displayed music types to only those that contain the string of characters entered in the Search box.
3. Select the music type and click the **Play Selection** button. The Wave/PC will play all the music of the selected type.

To find and play a track within a specific music type:

1. Click the **Types** button. A list of music types is displayed in the music finder.
2. Select the type of music containing the track you want and click the **Tracks** button.
3. Double-click the track title.

Changing the music files play mode

Clicking the **Mode** button selects the play mode of the Music Files player. The selected mode appears in the information window. Each click of the button cycles the mode setting through five settings:

- **Shuffle** plays all files in the selection randomly
- **Shuffle Repeat** repeats the selection in a new random order each time
- **Repeat** plays the selection continuously
- **Repeat Track** plays the selected file continuously
- **Blank** for normal play

Setting presets to play music files

You can assign up to six presets for Music Files. Any time you click an assigned preset button, the music assigned to the button will play.

There are three ways to set presets:

- **Drag and drop** – Find and select a music file or playlist in the music finder. Drag the item out of the finder window and drop it onto any preset button. When the preset is set, the item name appears on the preset button and it begins to play automatically.

♪ **Note:** *If you drag and drop more than one item onto the same preset button, you will automatically create a playlist. For more information about playlists, see "Creating your own music playlists" on page 32.*

- **Click the Set Preset button** – Click a preset button in the Wave/PC™ application window. Select a music file or playlist in the music finder. Click the **Set Preset** button. When the preset is stored, the item name appears on the preset button and the selection starts to play.
- **Press and hold any preset button** – Find and select a music file or playlist in the music finder. Click the **Play Selection** button to begin playback. Then, press and hold for two seconds any preset button on the radio control panel, remote control or in the Wave/PC application window. When the preset is stored, the radio beeps twice and the item name appears on the preset button in the Wave/PC application window.

Maintaining your music library

To help you create and maintain your music library, the Wave/PC™ application provides the capability to add and delete files, and edit the music finder database.

Adding new music to your music finder database

There are three ways to add new music to the music finder database:

- **Searching your hard drive** – During the Wave/PC software installation process, the setup program searched your hard disk for any existing music files and added them to the Wave/PC database. You can repeat this operation whenever you want. Open the Music Files setup window and click the **Scan hard drive for music** button.
- **By default** – The Wave/PC application is configured by default to automatically incorporate any new music files which are copied to your hard drive directly into your music finder database. Just download a music file from the Internet, and it will automatically appear in the music finder.
- **Standard drag and drop** – You can also drag and drop a music file from Windows directly onto the Wave/PC application window. This adds the music file to the Wave/PC database and begins playing the file.

Deleting music files from your music finder database

You can delete any item from the music finder by selecting it and clicking the **Delete Item** button. When you do this, a dialog box pops up (Figure 22) and gives you two options for deleting this file. You can just delete the item only from the music finder, or you can delete it from the music finder and your hard drive as well. If you only delete an item from the music finder, you can put it back at a later time using the scan function in the setup menu. If you also delete the item from your hard drive, the actual music file is removed from your hard drive.

Figure 22

Delete item confirmation



Editing file information

You can change information in any music finder view. In general, any changes you make will appear in all other music finder views below the one you changed. For example, if you select the Tracks view and change a name such as “Bourbon Street Parade” to “Bourbon Street”, you will notice this change also in any other view where this name appears.

To edit information:

1. Right-click the item to edit.
2. Select **Edit Entry** from the menu.
3. Type the new information and press **Enter**.

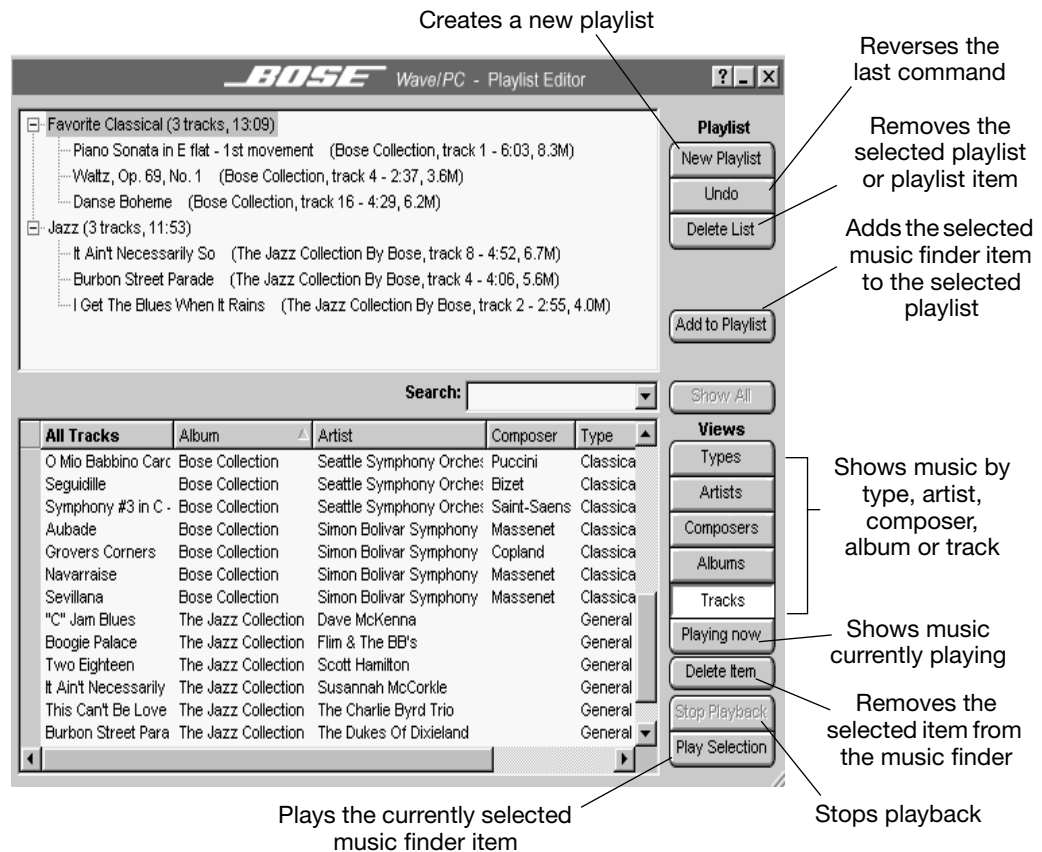
Changes made to the music finder database will be made to the individual music files themselves, unless you change the related setup option. See “Setting the Music Files player setup options” on page 33.

Creating your own music playlists

Open the Playlist Editor by clicking the **Edit Playlists** button in the Music Files player mode. The playlist editor window is divided into two views (Figure 23). The lower view displays the music files finder and the upper view displays your playlists in a tree view.

Figure 23

Playlist editor window



The tree view lists playlists by name. A closed playlist containing music files displays a plus sign [+] to the left of the name. If the playlist is empty, the plus sign is not displayed. Clicking the plus sign opens the playlist to display its contents. When opened, a minus sign is displayed to the left of the playlist name. Clicking the minus sign collapses or closes the playlist.

Playlists can be created using items from any music finder view. This means that you can create playlists of music by type, artist, composer, album or track.

To create a playlist:

1. Click the **New Playlist** button and enter the name of your new playlist. Press the Enter key on your keyboard.
2. Select a music finder view and select items to add to the playlist.
3. Click the **Add to Playlist** button, or drag and drop the item onto the playlist name.

Note: You can drag and drop items in a playlist to change the order.

To delete an item from a playlist:

1. Select the item in the playlist.
2. Click the **Delete Item** button directly below the **Undo** button.

To close the Playlist Editor:

Click the close button (**X**) to close the window and return to the Music Files player window.

Setting the Music Files player setup options

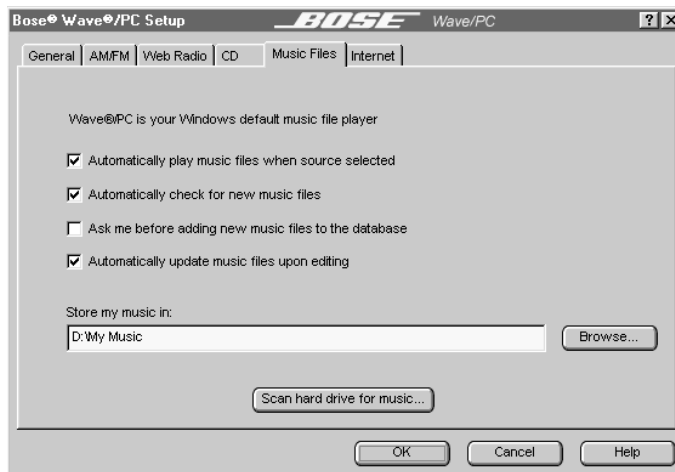
To access the Music Files player setup options (Figure 24) and change the configuration, click the **Setup** button and click the Music Files tab.

After selecting the options you want,

- Click the **OK** button to save your settings and close the setup window, or
- Click the **Cancel** button to close the setup window without saving any changes, or
- Click the **Help** button to open the on-line help information window.

Figure 24

Music Files setup options
(Wave/PC system is the
default Music Files player)

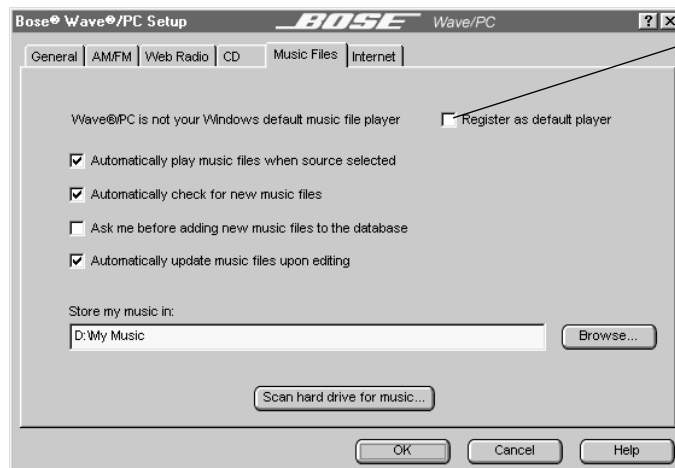


Wave@PC is your Windows default music file player

If you have been using another application as your default music files player, the Music Files setup options include a **Register as default player** selection. Check this selection to make the Wave/PC system your default Music Files player.

Figure 25

Music Files setup options
(Wave/PC system is not the
default Music Files player)



Click to make the Wave/PC system
your default Music Files player

Automatically play music files when source selected

Normally, when you select the Music Files player, it will automatically begin playing your music files. If you do not want your music files to automatically start playing when the Music Files player is selected, remove the check mark beside “Automatically play music files when source selected.”

Automatically check for new music files

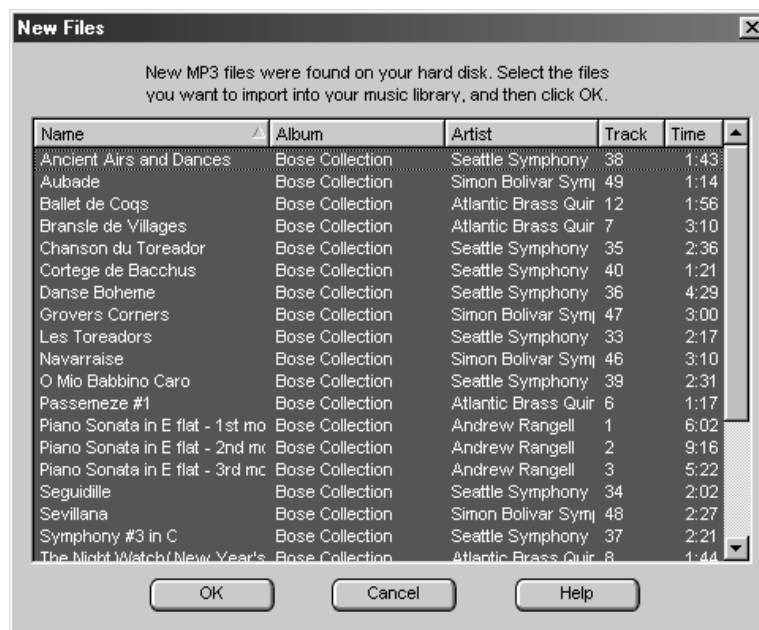
Normally, the Wave/PC™ application monitors your hard drive for new music files and adds them to the Wave/PC database. If you do not want this to happen automatically, remove the check mark beside “Automatically check for new music files.” If this box is not checked, you will need to click the **Scan hard drive for music** button to search for new music files.

Ask me before adding new music files to the database

When new music files are found they are automatically added to the database (default setting). To have the Wave/PC application ask if you want them added first, place a check beside “Ask me before adding new music files to the database.” The next time new music files are found, the dialog box in Figure 26 opens. Select the music files you want to add to the database and click **OK**. Multiple files can be selected using Control-click and Shift-click operations. Click **Cancel** to close the window without adding any new files.

Figure 26

New files found dialog box



Automatically update music files upon editing

Update music files...

The information shown in the music finder is stored in two places: (1) In the music finder database, and (2) in ID3 tags within individual music files. Editing information in the music finder window only changes the music finder database. The ID3 tags are kept up to date automatically if the “Automatically update music files upon editing” option is selected. If not selected, the setup window provides an **Update music files...** button to manually perform the update.



The “Store my music in:” edit box displays the default directory path to the storage location of recorded CD tracks. You can change the location by modifying the path string or by clicking the **Browse** button and navigating your way to a new location.

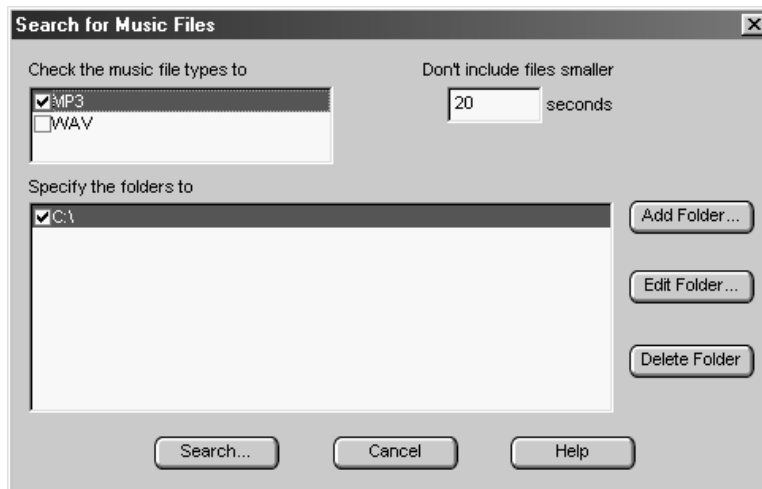
Scan hard drive for music...

To scan your hard drive for supported music files and add them to the music finder database:

1. Click the **Scan hard drive for music...** button. The dialog box shown in Figure 27 opens.
2. Select the types of music files to include in your search. You can select MP3 or WAV. By default, only MP3 is selected.
3. Specify the minimum file length. When importing files, you may want to exclude short files containing operating system or game sounds. By default, the search process ignores files less than 20 seconds long.
4. Specify the folders or directories to search. Use the **Add Folder**, **Edit Folder**, and **Delete Folder** buttons to edit the list. Use the check boxes to the left of the directory names to temporarily select/unselect folders.
5. Click the **Search** button. A progress dialog box pops up to keep you informed of the search status. When finished, the progress box displays the number of files found and the number added to the music finder database. You may notice that not all files found were added to the music finder database. This can happen if the file already exists in the database or if the file length is less than the specified minimum.

Figure 27

Search files dialog box



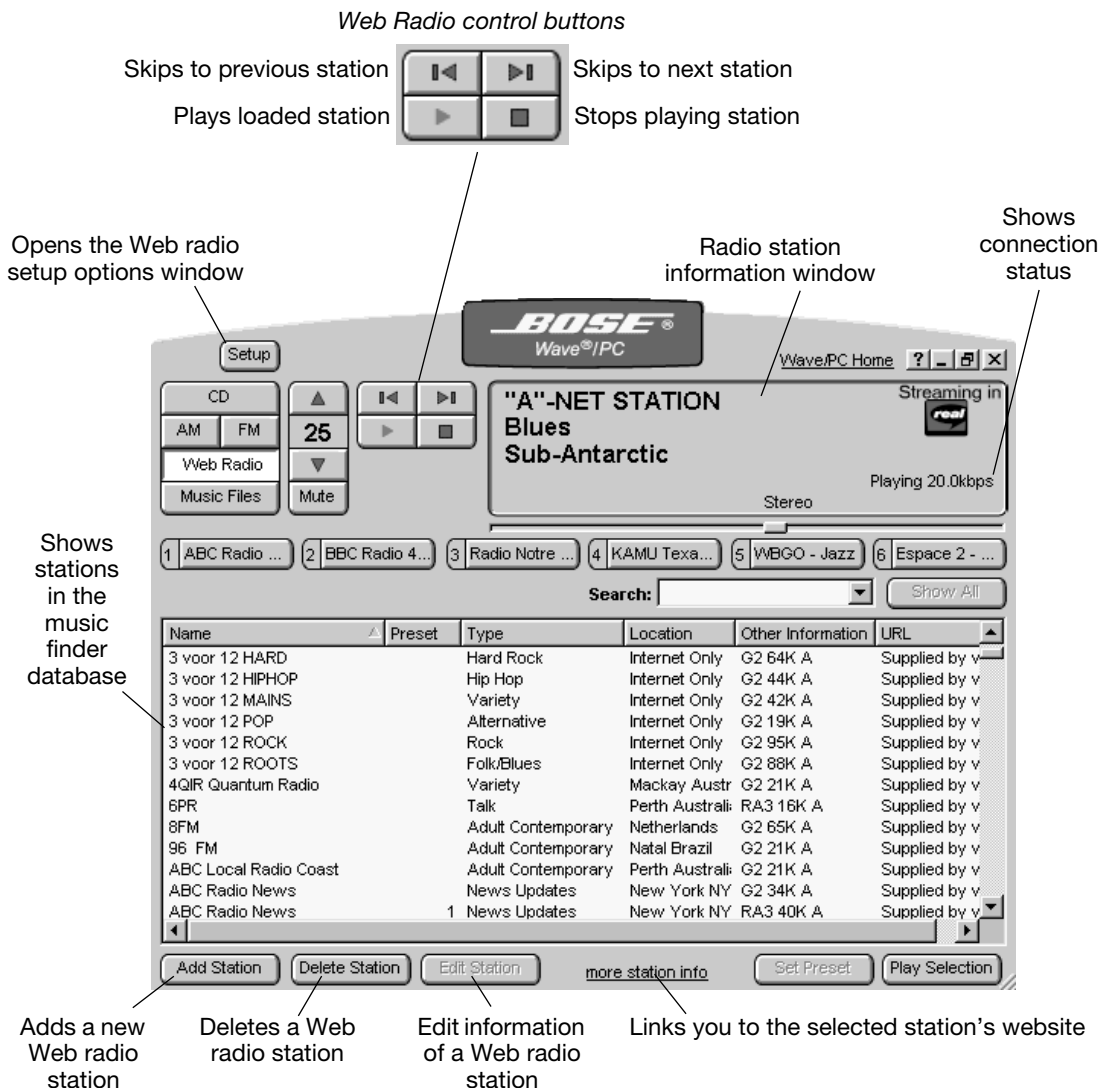
Selecting the Web Radio mode

The Web radio mode (Figure 28) allows you to listen to a variety of Internet audio broadcast stations. To listen to a Web radio station, click the **Web Radio** button. A list of Internet stations is displayed in the station finder window. When you select the Web radio mode, the last station you listened to starts playing. You can add, edit, or delete stations as you wish.

Note: To listen to Web radio, you need to have an active Internet connection.

Figure 28

Web radio controls and station finder



Playing a Web Radio station

There are four ways to play a Web Radio station:

- Double-click the station name in the station finder.
- Select the station and click the **Play Selection** button.
- Click a preset button. To set Web radio presets, see "Setting presets to play Web Radio stations" on page 38.
- Using the seek previous/next buttons, step through the station finder and stop at the station you want. The selected station will start playing after it connects with its server.

Reading the connection status

In the Web radio mode, you will experience a delay between when you select a web station and when you hear it. The connection status appears in the lower right corner of the information window (Figure 28).

- Connecting – looking for the station
- Buffering – transferring digital audio to the memory in your computer
- Playing – you are listening to the selected station
- Stopped – audio has ended or playback was interrupted

Adding a new Web Radio station

🎵 **Note:** The Wave/PC™ system only supports stations broadcasting in Real Networks format.

To add a new web station, click the **Add Station** button. This starts a short “wizard” to guide you through this three-step process (Figure 29):

1. Using your web browser, find the station you want to add. Begin listening to the station using RealPlayer®. Click **Next** when the station is playing.
2. Close the RealPlayer application (clicking the stop button is not enough) and return to the Wave/PC application. Click **Next** after RealPlayer has closed.
3. Fill in the remaining station information (optional) and click the **Finish** button. This completes the process of adding a new Web Radio station.

Figure 29

3 steps to adding a new Web Radio station

The figure displays three sequential screenshots of the 'Add Web Station' wizard interface:

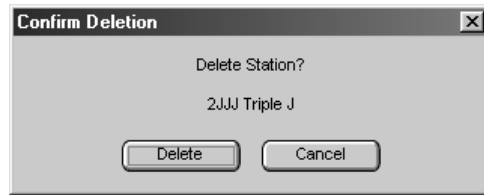
- Step 1 - Tune to the station:** The window title is 'Add Web Station'. The main text reads: 'The Wave/PC system only supports stations broadcasting in Real Networks format. Using your web browser, find the station you want to add. Then, begin listening to it using Real Player. Click Next when the station is playing.' At the bottom, there are buttons for 'Help', 'Cancel', and 'Next >'.
- Step 2 - Shutdown Real Player:** The window title is 'Add Web Station'. The main text reads: 'Now that you're listening to the station in Real Player, shutdown the Real Player application (pressing "Stop" is not enough) and return to the Wave/PC application. Click Next when Real Player is shutdown.' At the bottom, there are buttons for 'Help', 'Cancel', '< Back', and 'Next >'.
- Step 3 - Fill in remaining station information:** The window title is 'Add Web Station'. The main text reads: 'The station name and Audio URL are now available to Wave/PC. Fill in the remaining station information below and then click Finish to complete the station adding process.' The form contains the following fields:
 - Name: Smooth Jazz - Columbus
 - Audio URL: http://www.columbusjazz.com/columbusjazz.ram
 - Type: jazz
 - Location: Dublin, OH
 - Other: (empty field)
 - Home page: http://www.columbusjazz.com
 At the bottom, there are buttons for 'Help', 'Cancel', '< Back', and 'Finish'.

Deleting a Web Radio station

1. In the Wave/PC™ Web Radio mode, select a station in the station finder.
2. Click the **Delete Station** button.
3. When the delete confirmation box (Figure 30) appears, click **Delete**.

Figure 30

Web Radio delete confirmation box



Editing the information of a Web Radio station

This function is enabled *only* for user-entered stations.

1. In the Web Radio mode, select the station to edit in the station finder.
2. Click the **Edit Station** button. The Edit Web Station window (Figure 31) opens.
3. Change the information as necessary.
4. Click **OK** to create a new entry in the station finder, or click **Cancel** to close the dialog box and return to the Web radio mode.

Figure 31

Edit Web Station dialog box



Setting presets to play Web Radio stations

You can set up to six Web Radio preset stations. There are three ways to set presets:

- **Drag and drop** – Find and select a station in the station finder. Drag the Internet station out of the finder window and drop it onto any preset button. When the preset is set, the station identification appears on the preset button and it begins to play automatically.
- **Click the Set Preset button** – Click a preset button in the Wave/PC application window. Select an Internet radio station in the station finder. Click the **Set Preset** button. When the preset is set, the station identification appears on the preset button and it begins to play automatically.
- **Press and hold any preset button** – Find and listen to an Internet radio station in the music finder. Press and hold for two seconds any preset button on the radio control panel, remote control, or in the Wave/PC™ application window. When the preset is stored, the radio beeps twice and the station identification appears on the preset button in the Wave/PC application window.

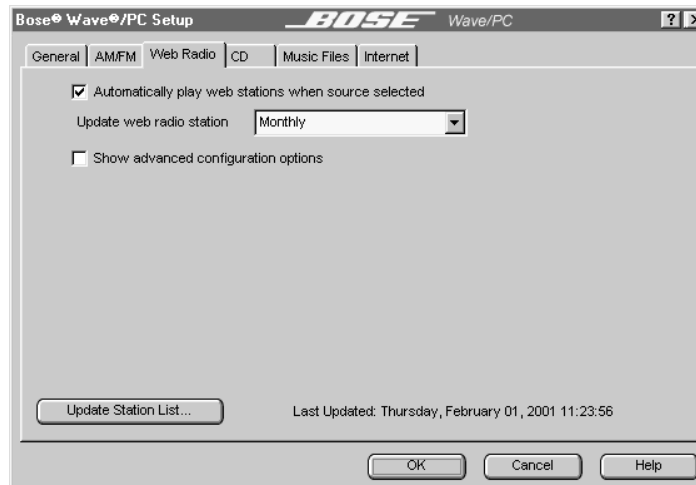
Setting Web radio setup options

To access the Web radio setup options (Figure 32) and change the configuration, click the **Setup** button and click the Web radio tab. After selecting the options you want,

- Click the **OK** button to save your settings and close the setup window, or
- Click the **Cancel** button to close the setup window without saving any changes, or
- Click the **Help** button to open the on-line help information window.

Figure 32

Web radio setup options

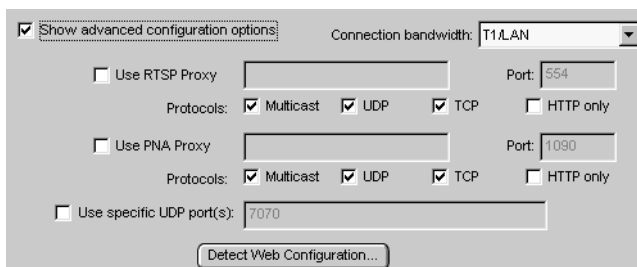


Automatically play web stations when source selected

Normally, the last Web station you listened to starts playing automatically when you select the Web Radio. If you do not want it to play automatically, remove the check mark next to “Automatically play web stations when source selected.”



The droplist selection controls how often the Web Radio station list is automatically updated. When set to Monthly or Weekly, the update process will occur every month or week automatically. Clicking the **Update Station List** button starts the same update process regardless of the droplist setting.



The software installation process sets up the Wave/PC™ system to use a standard dial-up connection. To use your Wave/PC system on a local area network, you may need to configure the advanced settings. Consult your network administrator for the correct settings.

If you are unable to connect to any Web Radio station, click the **Detect Web Configuration** button. This tells the software to examine your Internet configuration and attempt to establish a connection.

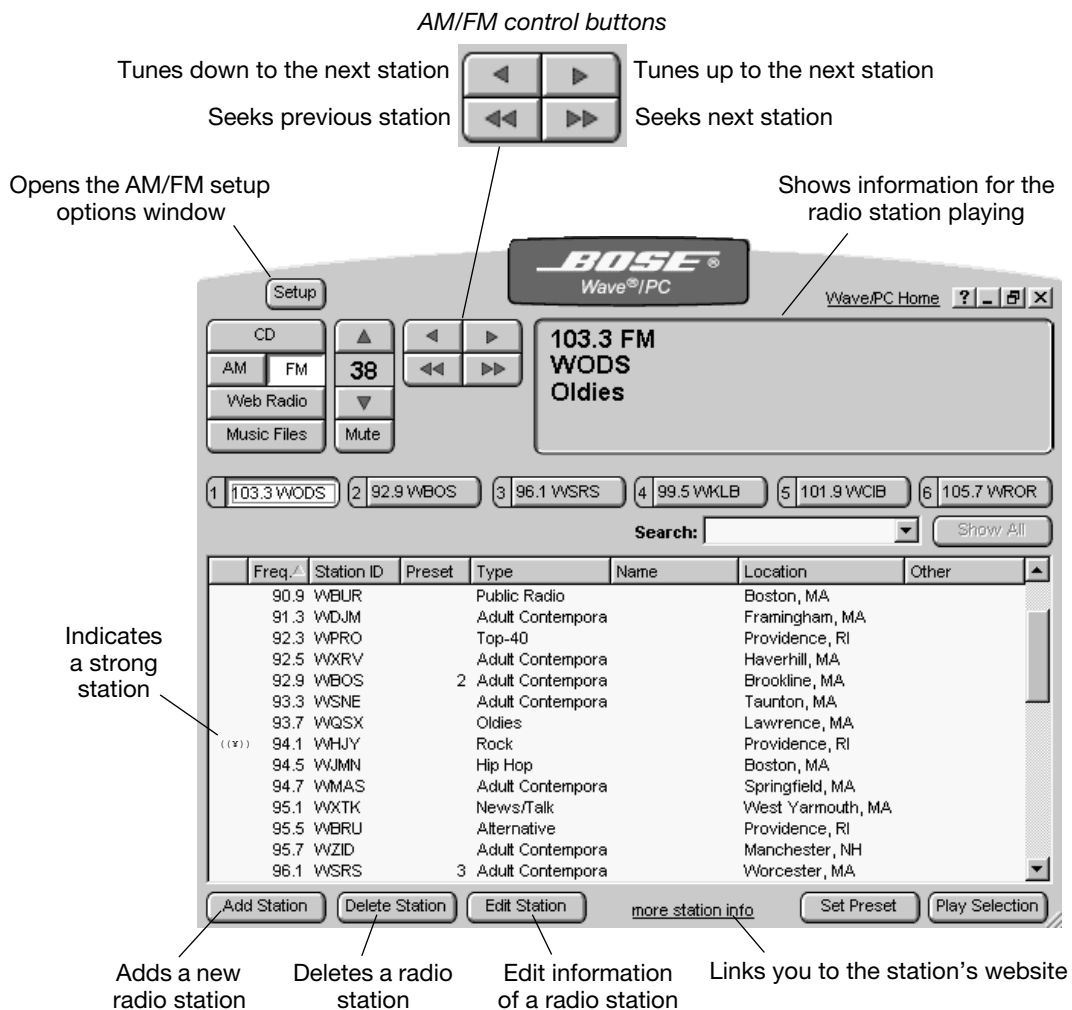
Selecting the AM/FM radio

Selecting AM/FM radio (Figure 33) allows you to listen to your local AM/FM broadcast stations using the tuner in the Wave/PC™ unit. To find a radio station, click the **AM** or **FM** button and a list of your local radio stations is displayed in the station finder. These stations were downloaded during installation according to the ZIP code you entered. In the far left-hand column of the station finder window, an indicator is displayed next to the strong stations.

♪ **Note:** FM radio reception is improved by installing the supplied FM dipole antenna. See “Connecting the external FM antenna” on page 12. If you are not using the FM dipole, the power cord serves as an antenna. Straighten the cord as much as possible for best reception.

Figure 33

AM/FM radio controls and station finder



Playing a radio station

There are five ways to tune to a radio station:

- Double-click the station name in the station finder.
- Select the station and click the **Play Selection** button.
- Click a preset button. To set AM/FM radio presets, see “Setting presets to play AM/FM radio stations” on page 42.
- Using the tune backward/forward buttons, tune the radio frequency to the station.
- Using the seek previous/next buttons, scan through the band until you find the station.

Adding a new AM/FM radio station

Tune to the station you want to add and click the **Add Station** button. The Add Radio Station dialog box (Figure 34) opens, prompting you to enter information about the radio station. Enter the information and click **OK** to create a new station in the station finder, or click **Cancel** to close the box without creating a new entry.

♪ **Note:** You must fill in the Station ID or Name field in order to create a new entry in the station finder. Also, the Frequency must not already exist in the station finder.

Figure 34

Add Radio Station dialog box

The URL used to access the station's website, the site accessed when you click the **more station info** link.

Editing a station

In AM/FM radio mode, select a station in the station finder and click the **Edit Station** button. The Edit Radio Station dialog window (Figure 35) opens in which you can change station information. Make your changes and click **OK** to update the station finder, or click **Cancel** to close the box without updating the station information.

Alternatively, you can edit station information in the station finder window. Select a radio station in the finder and right-click on any field and select **Edit Entry**. Type new text and press **Enter** on the keyboard.

Figure 35

Edit Radio Station dialog box

Deleting a station

Select the station in the station finder window. Click the **Delete Station** button. When the delete confirmation box appears, click **Delete** to remove the station from the station finder, or click **Cancel** to close the dialog box without deleting the station.

Figure 36

Delete confirmation dialog box

Setting presets to play AM/FM radio stations

You can assign up to six presets for the AM and FM radio modes. There are three ways to set presets:

- **Drag and drop** – Find and select a radio station in the station finder. Drag the station out of the finder window and drop it onto any preset button. When the preset is stored, the station identification appears on the preset button and it begins to play automatically.
- **Click the Set Preset button** – Click a preset button in the Wave/PC™ application window. Select a radio station in the station finder. Click the **Set Preset** button. When the preset is stored, the station identification appears on the preset button and it begins to play automatically.
- **Press and hold any preset button** – Play the radio station you want to assign to a preset number. Press and hold for two seconds any preset button on the radio control panel, remote control, or in the Wave/PC application window. When the preset is stored, the radio beeps twice and the station identification appears on the preset button in the Wave/PC application window.

Setting AM/FM radio setup options

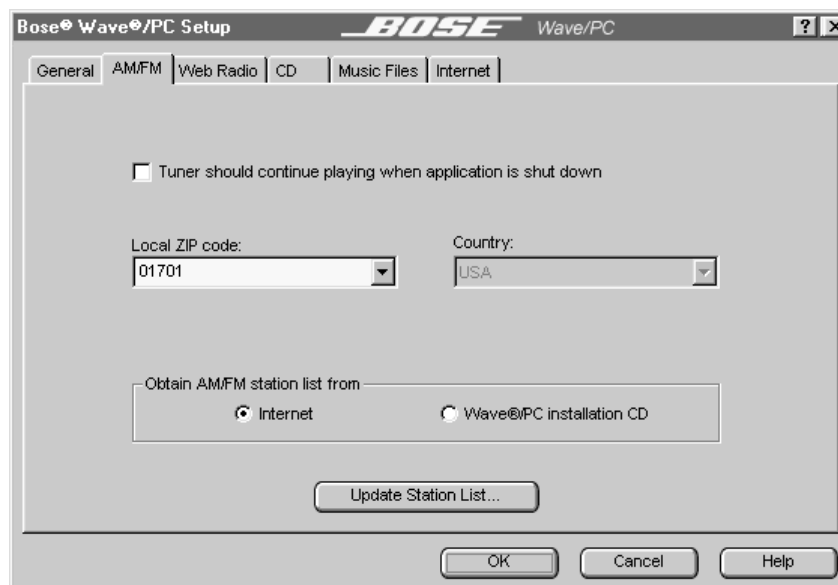
To open the AM/FM radio setup window (Figure 37) and change the configuration, click the **Setup** button and click the AM/FM tab.

After selecting the options you want,

- Click the **OK** button to save your settings and close the setup window, or
- Click the **Cancel** button to close the setup window without saving any changes, or
- Click the **Help** button to open the on-line help information window.

Figure 37

AM/FM radio setup options



Tuner should continue playing when application is shut down

Normally, if you are listening to AM/FM radio when you close the Wave/PC application, the Wave/PC tuner is turned off. If you want the radio station to continue playing when you close the Wave/PC application, place a check mark next to “Tuner should continue playing when application is shut down.”

Local ZIP code:	Country:
<input type="text" value="01701"/>	<input type="text" value="USA"/>

The station database that was built on your hard drive during software installation was determined by the ZIP code you entered. The selections you make in the **Local Zip code** and **Country** drop lists are used by the Bose Wave/PC web site to determine which stations to download when you request an update.

Obtain AM/FM station list from
<input checked="" type="radio"/> Internet <input type="radio"/> Wave@PC installation CD

For updating the stations list, you can choose between obtaining the update from the Internet, the Wave/PC™ installation CD, or a copy of the database stored on your hard drive (if selected during installation).

<input type="button" value="Update Station List..."/>

If you wish to update the AM/FM radio station list on your computer, use the **Update Station List...** button. The method you selected for obtaining the AM/FM station list determines the source of the information.

To update your station list:

1. Enter your ZIP code.
2. If connected to the Internet, click the **Internet** option under “Obtain AM/FM station list from.”

If no Internet connection is available, insert the Wave/PC installation CD and select the **Wave/PC installation CD** option.

3. Click the **Update Station List ...** button.

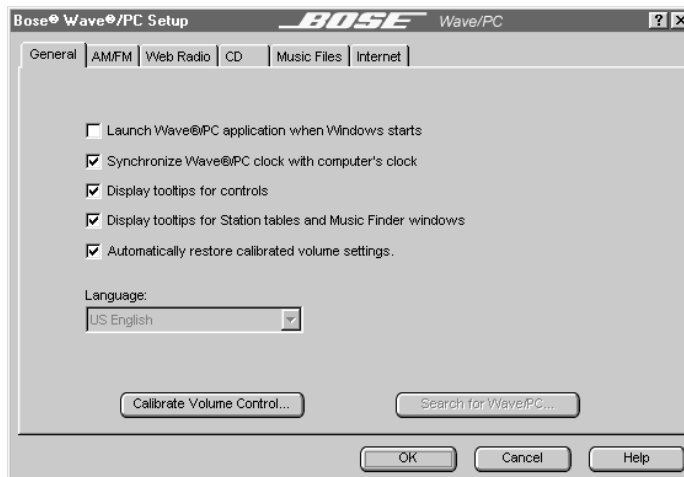
Setting general setup options

To open the General setup window (Figure 38) and change the configuration, click the **Setup** button and click the General tab. After selecting the options you want,

- Click the **OK** button to save your settings and close the setup window, or
- Click the **Cancel** button to close the setup window without saving any changes, or
- Click the **Help** button to open the on-line help information window.

Figure 38

General setup options
(default settings)



Launch Wave@PC application when Windows starts

If you want your Wave/PC system to automatically play music when you turn on your computer, place a check next to “Launch Wave/PC application when Windows starts.”

Synchronize Wave@PC clock with computer's clock

Normally, the Wave/PC clock is synchronized to your computer's clock. If you do not want these clocks synchronized, remove the check next to “Synchronize Wave/PC clock with computer's clock.” In this case, you will need to set the Wave/PC clock manually on the control panel of the Wave/PC unit. See “Setting the clock time” on page 49.

Display tooltips for controls

Display tooltips for Station tables and Music Finder windows

Tooltips are small pop-up windows that appear when you hover the cursor over a control. They contain a short description of the control. Normally, tooltips are displayed unless you deselect “Display tooltips for controls” and/or “Display tooltips for Station tables and Music Finder windows.”

Automatically restore calibrated volume settings.

When checked, the calibrated volume settings are restored whenever the Wave/PC application is launched. Volume settings were calibrated when you installed this software.



The Language drop list allows you to view the Wave/PC™ application in another language.



The **Calibrate Volume Control** button is available if your Wave/PC unit is connected to the serial port of your computer. Clicking this button calibrates system volume levels so that the output level from the AM/FM tuner is approximately the same as from the CD, Web Radio, and Music Files sources.



The Wave/PC application software communicates with the Wave/PC unit through the communications port which was configured during software installation. If you change the communications port, you will need to search for the Wave/PC unit by clicking the **Search for Wave/PC** button.

Setting Internet setup options

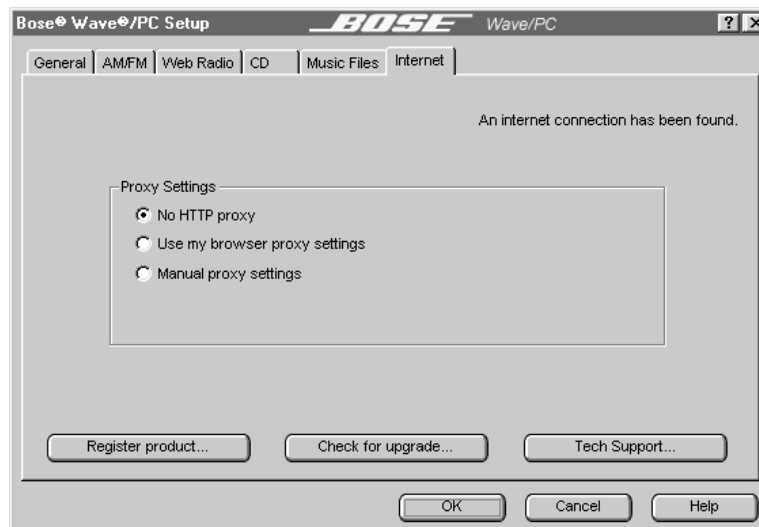
To open the Internet setup window (Figure 39) and change the configuration, click the **Setup** button and click the Internet tab.

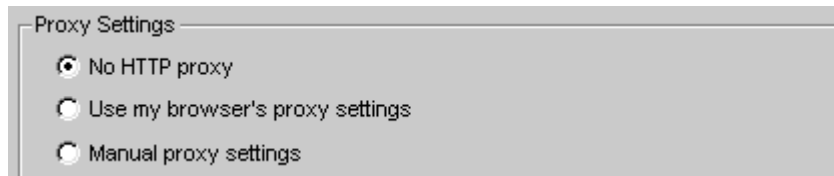
After selecting the options you want,

- Click the **OK** button to save your settings and close the setup window, or
- Click the **Cancel** button to close the setup window without saving any changes, or
- Click the **Help** button to open the on-line help information window.

Figure 39

Internet setup options





- If your computer is not part of a network, select the default setting “No HTTP proxy.”
- If your computer is part of a network and you already use a browser to access the Internet, select “Use my browser proxy settings.”
- If your computer is part of a network and you do not use a browser, select “Manual proxy settings.”



The **Register product** button is provided for registering your product or updating your registration information. Click the **Register product** button, fill in the requested information and click the **Submit** button

♪ **Note:** *If you are not automatically connected to the Internet after clicking this button, please establish an Internet connection manually.*



Clicking the **Check for upgrade** button connects your computer with the Wave/PC website and looks for a newer version of the Wave/PC application. If a newer version is found, you will be given the opportunity to download it to your computer.



Clicking the **Tech Support** button opens a window that asks you to describe the problem you are having with your Wave/PC system. Clicking the **Send** button transmits the description of the problem and your system components to a technical support website. Clicking **Cancel** dismisses the window and stops the E-mail transaction.

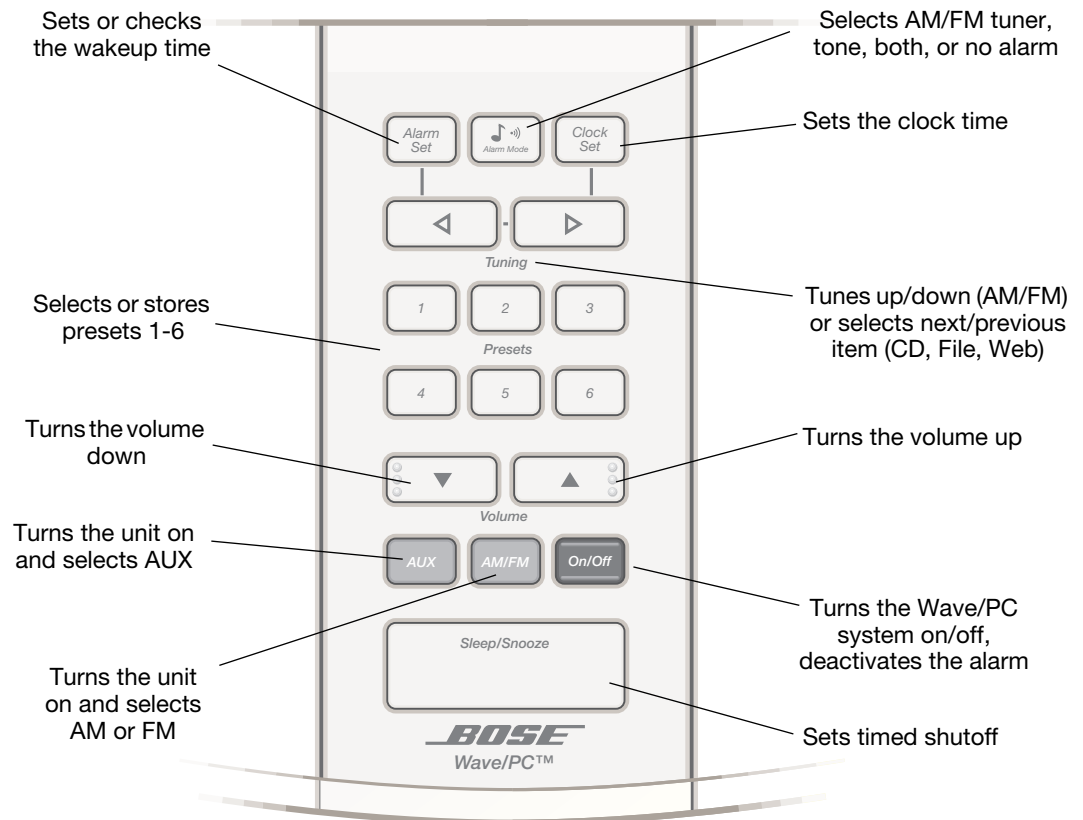
The Wave/PC™ unit control panel

The button panel functions are defined in Figure 40. You must use the control panel to change the clock and alarm settings, to select the Sleep feature time, or to select any component connected to the AUX input.

The control panel **On/Off** and **Volume** buttons have raised ridges to help you locate these frequently used buttons.

Figure 40

The Wave/PC unit control panel



Note: When the unit is on and in the clock display mode, pressing both Tuning buttons together displays the currently selected station.

The Wave/PC unit display

You can change the display mode of the Wave/PC unit to always show either the clock or the AM/FM tuner display. In the clock mode, the display shows the time while the radio is on. In AM/FM mode, the display shows the selected station frequency.

To change the display mode, turn the Wave/PC unit on. Press and hold the **Clock Set** button on the control panel and then press the **AM/FM** button to switch between clock and AM/FM tuner display modes.

Clock display mode

Figure 41 shows you the display indicators of the clock display. To view the AM/FM station frequency while in the clock mode, press both **Tuning** buttons at the same time.

Figure 41

The clock display

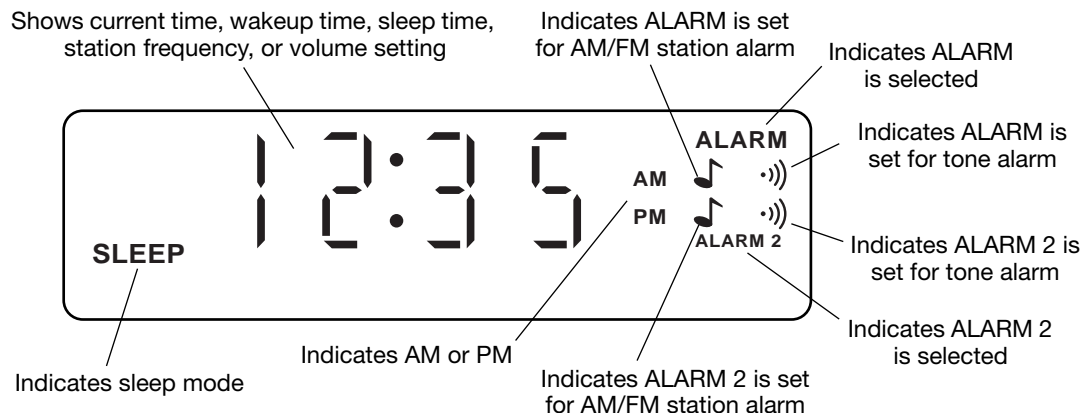
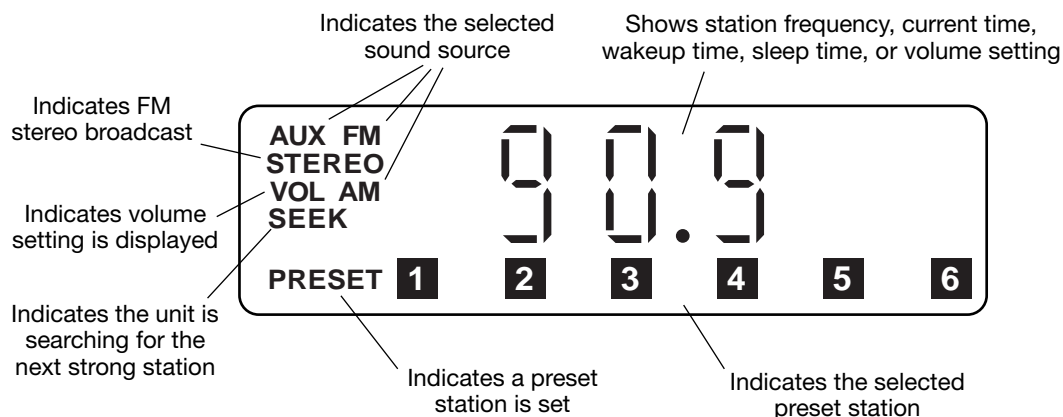
**AM/FM tuner display mode**

Figure 42 shows you the display indicators of the AM/FM tuner display.

Figure 42

The AM/FM tuner display

**Selecting AM/PM (12 hour) or Military (24 hour) time**

1. Press the **On/Off** button once to turn the Wave/PC system off.
2. Press and hold **Clock Set**, and then press **On/Off** to switch between AM/PM (12 HR) or military (24 HR) formats

Adjusting the display brightness

In low light situations, the display dims automatically. To adjust the brightness level for automatic dimming:

1. Press and hold the **Clock Set** button.
2. Press **Volume** up to view the 10 levels of increasing brightness. Use the **Volume** up or down button to select your preferred setting.
3. Release the **Clock Set** button.

In the event of a power outage, the selected setting is retained by the radio with the 9V battery backup power.

Setting the clock time

Normally, the Wave/PC™ software keeps the radio clock synchronized with the clock in your computer. If you choose to disable this option in the General setup menu, you can set the clock using the Wave/PC unit's control panel. Press and hold the **Clock Set** button and use the **Tuning** up and down buttons to change the clock time.

Using the sleep mode

To go to sleep listening to music, press the **Sleep/Snooze** button on the control panel to set the automatic shutoff time. The display shows the last setting in minutes. Press again, or press and hold to set the time until shutoff to 75, 60, 45, 30, 15, 10, 5, or 0.

You can use the Sleep mode for any music source.

Setting and using alarms

There are two alarms indicated on the clock display as **ALARM** (primary) and **ALARM 2** (secondary). You can set the wakeup time for either alarm with the Wave/PC unit on or off. The indicator for the selected alarm flashes when setting time or mode. The **ALARM 2** indicator continues flashing for 10 seconds after setting **ALARM 2**.

Selecting which alarm to set

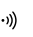

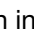
Press and hold **Alarm Set**. Press **Alarm Mode** to select **ALARM** or **ALARM 2**. The indicator flashes for the alarm you are setting.

Setting the alarm time

Press and hold **Alarm Set** and press **Tuning** up or down. The time display changes slowly at first, then more quickly. Release **Tuning** to stop.

Setting the alarm mode

After selecting the alarm, release **Alarm Set** and press **Alarm Mode** to select one of the following alarm modes:

- For tone only, press until you see the  indicator.
- For music only, press until you see the  indicator.
- For tone and music, press until you see both indicators .

Canceling the alarm mode

Follow the directions for setting the alarm mode. Press **Alarm Mode** until the display shows no alarm mode indicators.

Checking the alarm setting

Press and hold **Alarm Set** to see the ALARM wakeup time and the preset station. While holding **Alarm Set**, press **Alarm Mode** to see the ALARM 2 wakeup time and the preset station.

Waking to a preselected AM/FM station

Select **ALARM** or **ALARM 2**. Press and hold **Alarm Set**, and then press one of the six station Presets buttons (you can change between AM and FM if needed). To clear the preset, press and hold **Alarm Set** and press the button for that preset again.

Stopping the alarm

Press the **On/Off** button (or the stop ■ button on the remote). The indicators remain lit.

If you do not turn off the alarm, the tone 🎵 alarm shuts off in 30 minutes, the radio 🎵 alarm shuts off in 60 minutes. The alarm automatically resets to repeat daily.

Pausing the alarm for 10 minutes

Press the **Sleep/Snooze** button (or the **Snooze/Mute** button on the remote).

When the Alarm Mode is set for both music 🎵 and tone 🎵 alarms, press the **Sleep/Snooze** button to pause the tone for 10 minutes and turn on the music. Press again to silence the music – the tone repeats in 10 minutes.

You can repeat the snooze cycle as many times as you want. If you do not press any button while the tone is sounding, it continues for 30 minutes and then shuts off automatically.

Setting the volume of the music alarm

Press the **Volume** up or down button.

When the music alarm turns on, the alarm volume gradually increases to the last volume setting used. You can set the volume level with the Wave/PC™ unit on or off.

Setting the volume of the tone alarm

While the tone alarm is sounding, press the **Volume** up or down button.

When the tone alarm turns on, the tone alarm volume gradually increases to the last volume setting used.

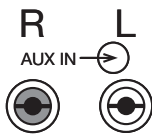
Using the alarm during a power loss

On the control panel only, press the **On/Off** button to silence the alarm.

The 9V backup battery operates only the tone alarm for approximately 48 hours following the loss of AC power. To conserve power, only the tone alarm sounds even if the radio alarm is also selected. Normal operation resumes when AC power is restored.

🎵 **Note:** *The Wave/PC system does not respond to remote control commands during an AC power outage. Be sure to replace the 9V battery after an extended power loss. For battery replacement instructions, see "Setting up the Wave/PC™ remote control" on page 8.*

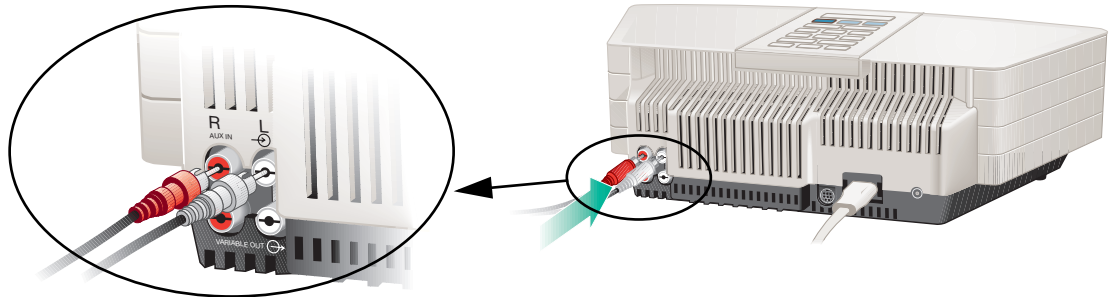
Connecting an external audio source to the Wave/PC™ unit



You can use the Wave/PC unit as extension speakers for an external audio source, such as a tape or CD player. Connect the external source to the right and left AUX IN jacks (Figure 43). Most audio cables are color coded. Match the red plug to the R (red) jack and the black or white plug to the L (white) jack. For cable information, see “Input connection details” on page 52.

Figure 43

Connecting an external component to AUX IN



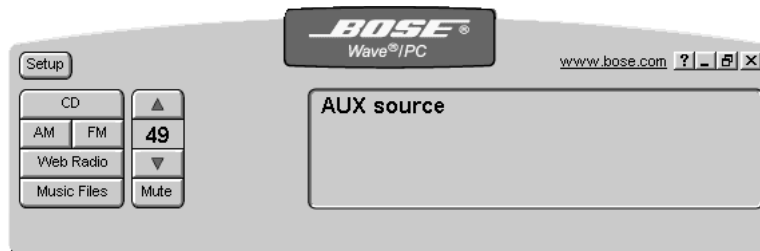
Selecting an external audio source

Right-click on the blue background of the Wave/PC application window and select **Source>Aux**, or press the **AUX** button on the control panel of the Wave/PC unit. “AUX source” should appear in the information window (Figure 44).

Adjust the listening volume with the **Volume** buttons. Control all other functions of the external source, including on/off, at the source, referring to its owner’s manual, if necessary.

Figure 44

Wave/PC application window when AUX is selected



Connecting external speakers to your Wave/PC unit



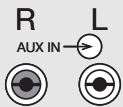
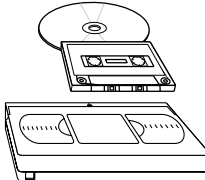


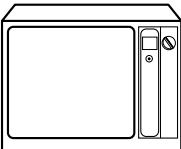
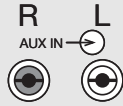





You can connect Bose® powered speakers to the right and left VARIABLE OUT jacks (located below the AUX IN jacks) on the rear panel of the Wave/PC unit. Most audio cables are color coded. Using the cable you received with the speakers, connect the red plug to the R (red) jack and the black or white plug to the L (white) jack. If your speaker cable has three connectors on each end, use only the two connectors that look alike. **DO NOT USE THE THIRD CONNECTOR.**

🎵 **Note:** Connecting cables to the VARIABLE OUT jacks shuts off the speakers in the Wave/PC unit.

Input connection details

Audio cables for connecting external components to the Wave/PC™ system are available at electronics stores, or by calling Bose® Customer Service.

Source	Cable	Connection at source	Wave/PC connection	Notes
Portable CD or tape player 	One miniplug-to-stereo audio cable 	Headphone jack For best sound, set the player volume control to approximately 3/4 of maximum volume.	AUX IN jacks 	
CD player, tape deck, or VCR 	One stereo audio cable 	Audio output jacks If there are two sets of outputs (fixed and variable), use fixed so that the volume can be controlled from the radio.	AUX IN jacks 	Recording from the Wave/PC system unit is not recommended because connecting cables to the VARIABLE OUT jacks shuts off the radio speakers, preventing you from monitoring the recording volume.
Television 	Use a standard RCA cable for a TV with stereo output jacks. Use a standard “Y” adapter for a TV with a single (mono) audio output jack. You may need a special adapter (such as a miniplug stereo audio cable) for a TV with a headphone output jack.	Audio output jacks If there are two sets of outputs (fixed and variable), use fixed so that the volume can be controlled from the radio.	AUX IN jacks 	To make sure the sound seems to come from the screen, place the Wave/PC unit close to the TV. The Wave/PC unit is magnetically shielded and will not interfere with your TV.
Bose® Lifestyle® music system 	Stereo cable with male-to-male RCA plugs. 	TAPE (REC) jacks	AUX IN jacks 	


Cleaning the Wave/PC™ unit

Use only a dry cloth to clean the outside of the Wave/PC unit. If necessary, you may use a soft-bristled attachment to gently vacuum the front of the radio.

Do not use any solvents, chemicals, or cleaning solutions containing alcohol, ammonia, or abrasives. Do not allow liquids to spill into any openings on the radio.

If liquids get into the product, turn the radio off. Call Bose® Customer Service as soon as possible to arrange for service. (See phone numbers on inside back cover.)

Replacing the batteries

 **WARNING:** Keep the remote control battery away from children. It may cause a fire or chemical burn if mishandled. Do not recharge, disassemble, heat above 100°C (212°F), or incinerate. Dispose of used battery promptly. Replace only with a battery of the correct type and model number.

To ensure correct operation of the Wave/PC unit's alarm system, replace the 9V battery every year and following an extended power loss. A dead battery may leak and cause damage. Do not unplug the Wave/PC unit from the power outlet while replacing the battery. If you do unplug it, you will need to reset the clock, alarm settings, and station presets. For further information on replacing the 9V battery, see "Installing the 9V battery in the Wave/PC™ unit" on page 9.

For information on replacing the remote control battery, see "Setting up the Wave/PC™ remote control" on page 8.

Technical information

Computer system requirements

- 200 MHz, minimum, Pentium processor or equivalent
- CD-ROM drive
- 32 MB RAM, minimum
- 200 MB, minimum, available hard drive space
- Sound card and available serial port
- Internet connection
- Microsoft Windows® 98, Windows® 98 SE, Windows® 2000, or Windows® ME

Wave/PC unit specifications

- AC Power rating (USA/Canada): 120V \sim AC, 50/60 Hz
- Dimensions: 14"W x 8 $\frac{1}{4}$ "D x 4 $\frac{3}{16}$ "H (35.6 cm x 21.0 cm x 10.6 cm)
- Weight: 6.8 lb (3.1 kg)

Warranty period

The Bose Wave/PC system is covered by a limited 1-year transferable warranty. Details of the warranty are provided on the warranty card that came with your radio. Please fill out the information section on the card and mail it to Bose.

Troubleshooting

If you need additional help in solving problems, contact:

Bose Customer Service, 1-800-851-2673

You can also request technical support using the Wave/PC™ system application. Click the **Setup** button and click on the **Internet** tab. Click the **Tech Support** button and follow the instructions.

Table 1: General Troubleshooting

Problem	What to do
Wave/PC system unit does not function	<ul style="list-style-type: none"> • Make sure the power cord connector is inserted securely into the Wave/PC unit, matching the flat side of the connector to the flat side of the jack. • Make sure the power cord is fully plugged into an operating AC wall outlet.
Remote control is inconsistent or does not work	<ul style="list-style-type: none"> • Check battery and its polarity (+ and –). • Replace the battery, if necessary (See “Replacing the batteries” on page 53.). • Operate the remote control closer to the radio. • Check for interference from room lighting or sunlight, or dust or dirt on the lens. Try the radio in a different location.
AM/FM stations play OK, but no audio for CDs, Web Radio, or Music Files. No computer tones.	<ul style="list-style-type: none"> • Check the interface cable connection between your computer and the Wave/PC system unit. • Close all other programs that use the serial port. • Close the Wave/PC monitor and launch the Wave/PC application again. • Click the Setup button and click on the General tab. Click the Search for Wave/PC button. • Save all your work and restart your computer. If problem still persists, contact Bose Customer Service.
A yellow question mark appears over the Wave/PC system monitor icon in the Task Bar.	
No audio from my computer and the Wave/PC monitor icon in the Task Bar appears normal.	<ul style="list-style-type: none"> • Check the audio connection to the sound card of your computer. • Check the volume calibration. Click the Setup button and click on the General tab. Click the Calibrate Volume Control button. • If you are using a portable computer, or any computer with a dial-type volume control, make sure the volume level is set to maximum.
Other music sources are heard when listening to AM/FM radio.	Switch to another source and then return to AM/FM radio. A Wave/PC system command may have been ignored while the computer was busy with other activities.
No audio after launching application.	Re-calibrate the Wave/PC system volume:
The volume control of the computer is reset every time the application is launched.	<ol style="list-style-type: none"> 1. Click the Setup button and click on the General tab. 2. Click the Calibrate Volume Control button. 3. Wait for the process to complete 4. Click the OK button.
The computer audio is much louder/softer than AM/FM radio audio.	
The display on the Wave/PC™ unit sometimes flashes “no PC” or “PC.”	Wait. The computer may be busy performing other tasks. This problem should disappear after the computer returns to normal operation. If not, contact Customer Service.
The time displayed on Wave/PC unit is incorrect.	Adjust the time of the clock in your computer. By default, the Wave/PC application synchronizes the Wave/PC system clock to the clock in your computer. If you want to set the Wave/PC system clock independently, click the Setup button and click the General tab. Disable the clock synchronization option.

Table 1: General Troubleshooting

Problem	What to do
No computer sounds until Wave/PC™ system application is launched.	Re-install the Wave/PC software application.
The Wave/PC system application window looks strange. Colors are not smooth and the information window contains blocks.	Go to the Control Panel of your computer. Open the display properties and change the color setting (if supported) from 256 to a greater color depth.
When the Wave/PC system is off, I still hear sounds generated by other applications. Why?	Although the Wave/PC application is not running, the Wave/PC unit is still used as computer speakers. To turn off all computer sounds, click the Mute button, or right-click on the Wave/PC monitor icon and select Exit .
Tone alarm is sounding and I cannot activate the snooze function using the remote.	On the Wave/PC unit, press the Snooze button or the On/Off button to turn the alarm off.

Table 2: AM/FM troubleshooting

Problem	What to do
The AM/FM buttons in the application window are grayed and clicking on them has no effect.	<ul style="list-style-type: none"> • Check the interface cable connection between your computer and the Wave/PC system unit. • Close all other programs that use the serial port. • Close the Wave/PC monitor and launch the Wave/PC application again. • Click the Setup button and click on the General tab. Click the Search for Wave/PC button. • Save all your work and restart your computer. If problem still persists, contact Bose Customer Service.
Poor AM and FM reception.	<ul style="list-style-type: none"> • Move the Wave/PC system unit away from the computer monitor. • If possible, connect the Wave/PC system unit to an AC outlet not used by your computer system. • To improve AM reception, turn the radio slightly. • To improve FM reception if you are not using an external antenna, straighten the power cord as much as possible. • For improved FM reception, connect the supplied FM dipole antenna to the external FM antenna jack on the back of the Wave/PC unit.
When tuning to a station having a strong signal indicator, I get static.	
When seeking next higher/lower station, the seek operation never stops.	
Cannot update my station list from the Bose® server.	Check your internet connection.
A station in my local area is not listed in the Station Finder, or the station information is incorrect.	<ul style="list-style-type: none"> • Update the station list from the Bose server. • Manually edit the information. • Send an e-mail to Bose with the correct information so that the Bose server can be updated. Click the Setup button and click on the Internet tab. Click the Tech Support button. Enter your message and click the Send button.
The AM/FM radio turns off when I close the Wave/PC system application or when I shut down my computer.	By default, the Wave/PC system automatically turns off the radio when the application is closed. To change this setting: <ol style="list-style-type: none"> 1. Click the Setup button and click the AM/FM tab. 2. Select, "Tuner should continue playing when application is shut down."
Partial or missing information for a station in the Station Finder.	Click the Edit Station button and edit the station information.

Table 3: Web Radio troubleshooting

Problem	What to do
I cannot connect to any stations. I keep getting "Cannot connect to server" messages.	<ul style="list-style-type: none"> • Make sure you have an active Internet connection. • Open RealPlayer and go to View, Preferences. Click the "Transport" tab and click "Auto Configure." When finished, close RealPlayer®. If problem persists, contact Bose Customer Service.
I cannot connect to some stations.	<ul style="list-style-type: none"> • Try connecting at another time. • Some Internet stations do not broadcast 24 hours a day.
Unable to add a new Web Radio station to the Station Finder using the instructions in the owner's guide.	<p>Click the Add Station button. This starts a short "wizard" to guide you through this three-step process:</p> <ol style="list-style-type: none"> 1. Using your web browser, find the station you want to add. Begin listening to the station using RealPlayer®. Click Next when the station is playing. 2. Close the RealPlayer application (clicking the stop button is not enough) and return to the Wave/PC application. Click Next after RealPlayer® has closed. 3. Fill in the remaining station information (optional) and click the Finish button. This completes the process of adding a new Web Radio station.
Some stations play at a slow speed.	Contact your computer manufacturer.
The same station is assigned to multiple presets and I cannot erase any of them.	You cannot erase a preset, but you can overwrite it. Drag a new station from the Station Finder and drop it on the preset button you want to change.
When I switch to Web Radio, it automatically begins to connect to a station before I decide what I want.	Click the Setup button and then click the Web Radio tab. Deselect the "Automatically begin playing when source is selected" option.
Web Radio stations do not work after running "Detect Web configuration" in the setup options.	Open RealPlayer® and go to View, Preferences. Click the "Transport" tab and click "Auto Configure." When finished, close RealPlayer. If problem persists, contact Bose Customer Service.
I cannot connect to any Web Radio station after uninstalling RealPlayer.	Re-install RealPlayer®. The Wave/PC™ system application requires this for accessing Web Radio. RealPlayer can be installed by re-installing the Wave/PC software.

Table 4: CD troubleshooting

Problem	What to do
CD audio is too loud or soft compared to AM/FM, Web Radio, and Music Files.	Double-click the speaker icon in the Task Bar and adjust the CD volume level until it is at approximately the same level as other sources. If the CD volume is not affected by adjusting the CD level, the CD recording could be too loud or too soft.
Information displayed for a CD is incorrect.	Click on the field and edit the information. Not all CDDB information is correct.
Information for a CD is not found within CDDB.	Click on the field and enter the information. CDDB does not have information for some CDs.

Table 4: CD troubleshooting

Problem	What to do
Information downloaded from CDDB is for another CD.	<ol style="list-style-type: none"> 1. Click the Setup button and click on the CD tab. 2. Deselect the "Use first match for CD track info" option. 3. Click the OK button and then click the Get Track Info button. CDDB should provide all matches available. 4. Select the appropriate match from the list.
When playing a CD, I always get the message "Unknown Artist" followed by "CDDB service not available."	Make sure there is an active Internet connection to your computer. If you did not register during installation, re-install the software and make sure you provide a valid e-mail address.
CDDB information is not automatically downloaded when I insert a CD, even though I have selected the option to do this.	On your computer, open the Control Panel and then open Internet Options. Select the option, "Automatically Connect to the Internet."
The Record CD button is grayed and does not respond when I play a CD.	Your CD-ROM drive does not support simultaneous play and record. Stop playback of CD and button should become available. If the Record CD button is still grayed, your CD-ROM drive may not support digital audio extraction.
Audio CDs do not play automatically when inserted and the application is closed.	Click the Setup button and click on the CD tab. Select the "Automatically play CDs when inserted" option.
Another application is launched when I insert an audio CD.	Click the Setup button and click on the CD tab. Click the "Register as CD default player" checkbox to register the Wave/PC™ system as your default CD player.
When trying to record a CD track, an "Error" message appears in the status column.	Try cleaning the CD. If problem persists, the CD is probably scratched.
CD stops playing in middle of track.	Clean the CD and try again. If problem persists, click the Setup button and click on the CD tab. Select the "Analog" mode.

Table 5: Music Files troubleshooting

Problem	What to do
Another application is launched when I double-click on an MP3 or WAV file.	Click the Setup button and click on the Music Files tab. Click the "Register as default player" checkbox to register the Wave/PC system as your default MP3 and WAV files player.
After re-importing my music, all the changes I made were erased.	All changes made to music file information are retained within the Wave/PC system database. In order to make these changes a permanent part of the MP3 file header:
After copying my music files to another computer, and scanning the hard drive for files, the changes I made were not present.	<ol style="list-style-type: none"> 1. Click the Setup button. 2. Click on the Music Files tab. 3. Click the "Automatically update music files upon editing" checkbox.
The play mode (Repeat, Repeat Track, Shuffle, Shuffle Repeat, Normal) is changing automatically.	This can happen when switching from one preset to another. Each preset can be set independently to its own play mode. If you are not playing any presets, you can switch the play mode by clicking the Mode button.

Table 5: Music Files troubleshooting

Problem	What to do
I inserted a CD with music files and then scanned for music, but the files did not appear in the Music Finder.	Files cannot be directly imported from a CD. To import these files: <ol style="list-style-type: none"> 1. Play the CD from the CD display screen. 2. Copy the files to the hard drive and then scan the hard drive for music files.
While playing a music file I try to delete it but cannot do it.	You cannot delete a file that is currently being played. Click the Stop button, or switch to another file, and then delete the item.

Table 6: Installation troubleshooting

Problem	What to do
The installation did not begin after inserting the Wave/PC™ software CD.	Go to the Start menu and select Run . In the Run window, open <i>d</i> :\ Setup.exe , where <i>d</i> is the letter of your computer's CD-ROM drive.
The install program will not proceed beyond the "End User License Agreement" screen.	Make sure you read the terms of agreement and click on "I Agree" before clicking the Next button.
The install program stops at the "Connect the Wave/PC unit to your computer" screen.	<ul style="list-style-type: none"> • Check the interface cable connection between your computer and the Wave/PC unit. • Make sure that the serial port is not busy with another application. • Disconnect/reconnect the power cable to the Wave/PC™ unit.
No audio heard at the "Connect the Wave/PC unit to your computer" screen.	<ul style="list-style-type: none"> • Make sure that the stereo mini-plug on the Wave/PC system interface cable is connected to the audio output connector on your computer. • Move the volume slider control on the screen to the right. • If your soundcard has a manual volume control, set it to maximum.
A "Registration Error" appears during installation.	<ul style="list-style-type: none"> • Make sure you have an Internet connection. • Try again later, server may be busy. • If problem still persists, contact Bose® Customer Service.
The CD recording test reports that my CD-ROM drive can record at a much slower speed than its specified speed.	CD recording speed is a function of many factors in your computer. For example, your CD-ROM may be able to read at 32X, but your computer may not be able to record and encode into MP3 at that speed.
My presets and playlists are gone after re-installing the Wave/PC software.	To keep all presets and playlists when re-installing the software, select the "Refresh" option on the installation screen. Selecting the "Re-install" option automatically erases all user-entered information from the previous software version.

B

Bit rate – The digital representation of an audio signal expressed in bits per second (bps). The bit rate often determines the quality and size of an MP3 file. Higher bit rates create larger but better-sounding files. The most common bit rate for MP3 is 128kbps. This gives you near-CD quality at about a 10:1 compression ratio.

Browser – A short name for your Internet browser.

C

CDDB – An on-line repository of audio CD information provided by CDDB, Incorporated. Your Wave/PC™ software can access CDDB automatically to get album title and track information when you load an audio CD into your CD-ROM drive.

Check box – A graphic element in a display that enables you to select a combination of choices by clicking a box.

D

Default – Refers to the preset value assumed by your computer unless you change it.

Destination directory – The path which determines where your downloaded files are stored on your hard drive.

E

Encoding – In this context, encoding is the process of compressing a ripped audio file into the MP3 format.

G

Genre – A type or category of music, such as Classical, Country, Pop, Jazz, etc.

I

ISP – Internet Service Provider. This is the dial-up service you use to connect to the Internet if you don't have a permanent network connection.

M

MP3 – An audio file format also known as MPEG 1 Layer 3. Audio files of this type are identified by their “.mp3” filename extension. Because audio files can be very large, an MP3 file is compressed so that it occupies less storage space on your hard drive. Although it is compressed, it has little or no loss in sound quality.

MPEG – The Moving Picture Experts Group is a name for a set of standards for the compression and playback of digital audio and video. MP3 is one of these standards.

Music file – A computer file used in the digital music industry. It could be encoded in one of several formats identified by its filename extension (such as *.mp3).

Music finder – A Wave/PC software feature that allows you to find music files located on your computer's hard drive.

P

Playlist – A file containing a customized list of music files compiled from your music library.

Pushbutton – A graphic element in a display which, when clicked (depressed), performs an action.

R

Radio button – A graphic element in a display which when clicked, allows you to select only one alternative from a group.

Ripping – The process of extracting digital audio files from a CD.

S

Station finder – A Wave/PC™ software feature that allows you to find an AM/FM broadcast radio station in the database.

Streaming – A name given to the media that allows you to play audio or video directly from the Internet, without first saving it to your hard drive. Its main advantage is that you can start listening to your selections right away, without having to wait for a file to finish downloading. Two popular streaming formats are Real Audio and SHOUTcast.

U

URL – Uniform Resource Locator. The complete address which tells your browser where to look for information.

W

Web radio – Broadcast radio programs available through the world wide web.

Web station finder – A Wave/PC software feature that allows you to find a Web Radio station in the database.

A

acoustic waveguide 6
 ALARM 48, 49
 ALARM 2 48, 49
 alarm check 49
 Alarm Mode 49
 Alarm Off 17
 Alarm Set 49
 AM 17, 47, 48
 AM/FM 17
 AM/FM radio 40

- adding a station to 41
- controls 40
- deleting a station from 41
- editing a station in 41
- setting presets for 42
- setup 42

 application window 15
 automatic dimming 48
 automatic play 25
 automatic shutoff 49
 AUX 17, 47, 48
 AUX IN jacks 51, 52

B

backup battery power 9, 48, 50, 53
 battery (9V) installation 9
 battery (9V) replacement 53
 battery (remote control) installation 8
 battery (remote control) replacement 8, 53, 54
 battery disposal 2, 8, 9, 53

C

cable connections 10
 CD 17

- audio 20
- MP3 23

 CD player 52
 CD player/recorder

- recording 22
- setup 24

 CDDB 23
 CD-ROM test 26
 cleaning 53
 clock mode 47
 Clock Set 48
 close button 15
 computer, connecting to 10
 creating playlists 32
 Customer Service 8, 53

D

default player

- CD 24

dimensions 53

F

features 6
 File 17
 FM 17, 47, 48
 FM antenna installation 12
 functions 17

G

General setup 44

H

heat from radio 2

I

Icons

- can't synchronize 19
- normal operation 19
- software problem 19
- Wave/PC Application 15
- Wave/PC Monitor 15

 infrared remote control 17
 installation 6

- hardware 7
- software 12

 interference 54
 Internet setup 45

L

lithium battery 8
 location 7, 54

M

moisture 2
 mounting strip 9
 MP3 files 23
 Music files

- searching 29
- sorting 29

 Music Files player 27

- presets 30
- setup 33

 music finder navigation 28
 music library 31
 Mute 17

O

On/Off 15, 17, 47, 48, 50

P

Play/Pause 17
 playlists 32
 power connector 11
 power cord 11, 54

power loss 9, 50
 power rating 53
 powered speakers 51
 PRESET 48
 Presets 17
 presets 48, 50

R

radio alarm 17, 47
 recording format 25
 recording quality 25
 reduced application window 16
 registering 33
 remote control 8, 9, 15, 17, 54

S

safety information 2
 SEEK 48
 serial number 7
 Setup button 16
 SLEEP 48
 Sleep 17
 Sleep/Snooze 47, 49, 50
 Snooze 17
 sound quality 17
 source selection buttons 16
 Start Bose® Wave®/PC 15
 station frequency 48
 station presets 17, 47, 48
 STEREO 48
 Stop 17
 system audio 17
 system controls

- application window 16
- location 15
- sources 16
- Volume 16

 system monitor 19
 system on/off controls 15

T

tape player 52
 television 52
 Time 17
 time, AM or PM 48
 tone alarm 17, 47
 tone alarm volume 50
 Track/Tune 17
 troubleshooting

- AM/FM radio 55
- CD 56
- general 54
- installation 58
- Music Files 57
- Web radio 56

 Tuning 17, 47

U

unit control panel 15
unmute 17
unpacking 7

V

VOL 48
Volume 17, 18, 47

W

wakeup time 17, 47, 48
warranty 53
warranty card 7, 53
Wave/PC™ unit
 12/24 hr. time 48
 alarms 49
 cleaning 53
 clock display 48
 controls 47
 display 47
 display brightness 48
 setting the time of 49
 tuner display 48
Wave/PC unit, connecting to 11
Web 17, 36
Web Radio 36
 adding stations to 37
 controls 36
 deleting a station from 38
 presets 38
 setup 39
Web radio
 editing a station in 38
weight 53

Bose Corporation

USA & Canada Service

Bose Corporation, The Mountain
Framingham, MA 01701-9168
1-800-851-2673

World Wide Web

www.bose.com

BOSE[®]
Better sound through research[®]

©2001 Bose Corporation
The Mountain, Framingham, MA 01701-9168 USA
PDF259774_00 JN10648 April 12, 2001

Free Manuals Download Website

<http://myh66.com>

<http://usermanuals.us>

<http://www.somanuals.com>

<http://www.4manuals.cc>

<http://www.manual-lib.com>

<http://www.404manual.com>

<http://www.luxmanual.com>

<http://aubethermostatmanual.com>

Golf course search by state

<http://golfingnear.com>

Email search by domain

<http://emailbydomain.com>

Auto manuals search

<http://auto.somanuals.com>

TV manuals search

<http://tv.somanuals.com>