

Driver Installation Guide

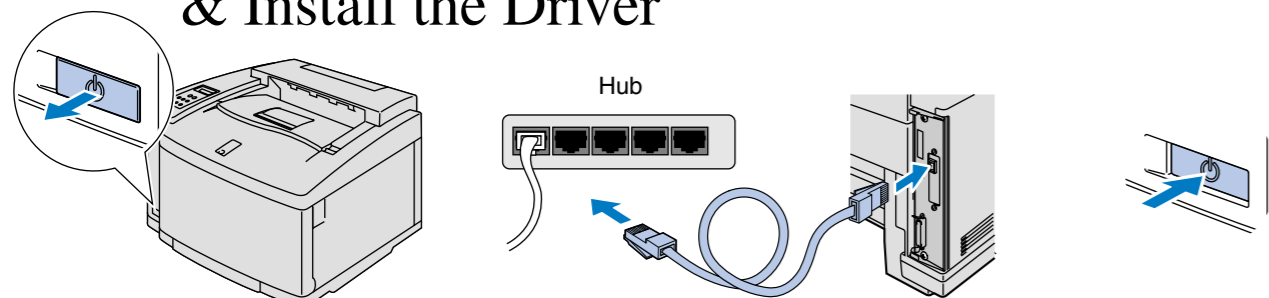
Windows® For Network Users

- Before you continue, please ensure that the administrator has configured the network printer settings correctly.
- Follow the instructions in this guide for your network type and operating system.
- Some illustrations are based on the HL-2600CN series.

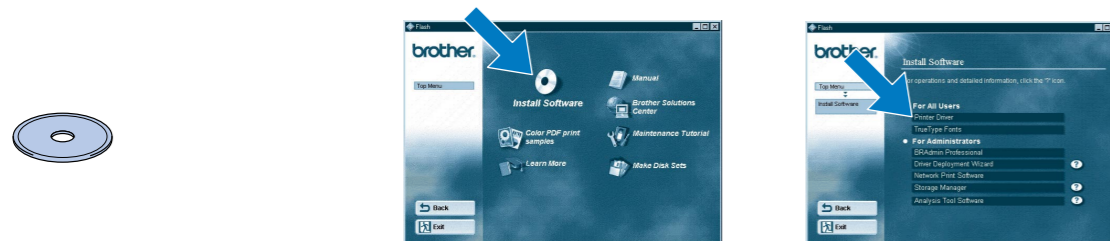
Steps 1 to 5 Follow these steps in the Quick Setup Guide first.

For All Network Users

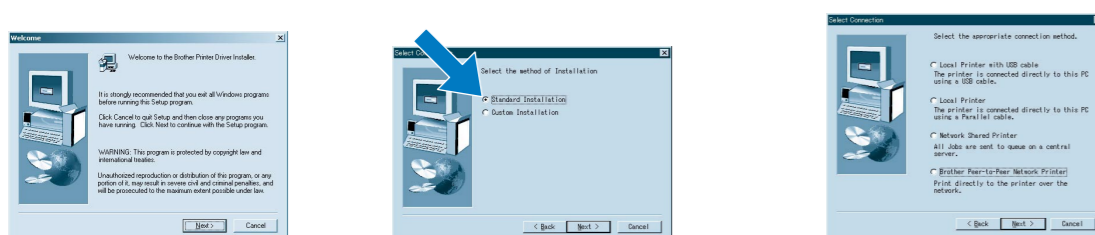
Step 6 Connect the Printer to Your Network & Install the Driver



- 1 Turn off the printer power button.
- 2 Connect the network cable to your printer, and then connect it to a free port on your hub.
- 3 Turn on the printer power button.



- 4 Insert the CD-ROM into your CD-ROM drive. The opening screen will appear automatically. Follow the instructions on the screen.
- 5 Click the Install Software icon on the Menu screen.
- 6 Click "Printer Driver."



- 7 Click the Next button. Follow the instructions on the screen.
- 8 Select "Standard Installation," and then click the Next button.
- 9 Select "Network Shared Printer" or "Brother Peer-to-Peer Network Printer," and then click the Next button.

Go to Step 7.*1

*1 Follow the instructions for the appropriate network connection style and your operating system.

For Network Shared Printer Users

Step 7 Select the Appropriate Printer Queue or 'Sharename'

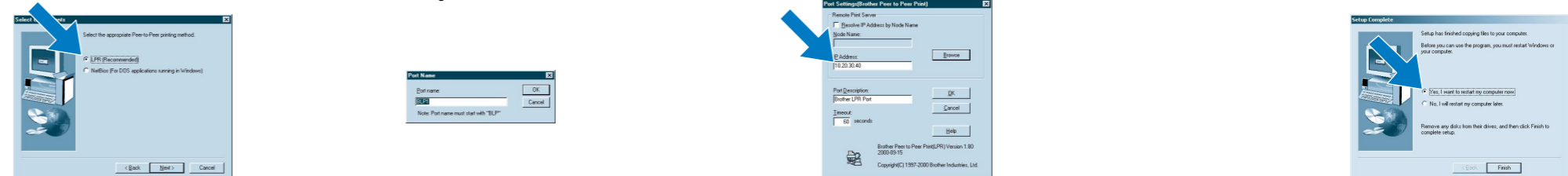


- 1 Select your printer's queue, and then click the OK button.
- 2 When the appropriate queue is specified, the printer driver will be installed.

The setup is now complete.

For Brother Peer-to-Peer Network Printer Users (LPR- Recommended Peer-to-Peer Printing Method)

Step 7 Configuring the LPR Port For Windows® 95/98/Me Users Only



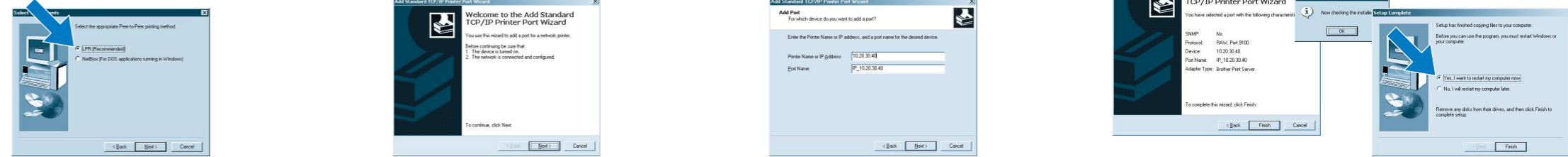
- 1 Select "LPR (Recommended)," and then click the Next button.
- 2 Enter your unique port name (ex. **BLP1**), and then click the OK button.
- 3 Specify your printer's IP Address (or click the Browse button to see a list of printers), and then click the OK button.
- 4 Click the Finish button to restart your PC. **After your PC has restarted, setup will be complete.**

For Windows NT® 4.0 Users Only

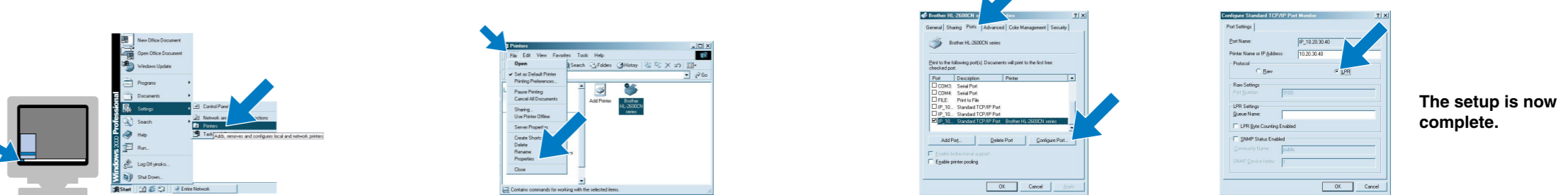


- 1 Select "LPR (Recommended)," and then click the Next button. **Note:** If this screen appears, insert the Windows NT® 4.0 CD-ROM into your CD-ROM drive.
- 2 Enter your printer's IP Address and the queue name **BINARY_P1**, and then click the OK button.
- 3 Click the Finish button to restart your PC. **After your PC has restarted, setup will be complete.**

For Windows® 2000 Users Only



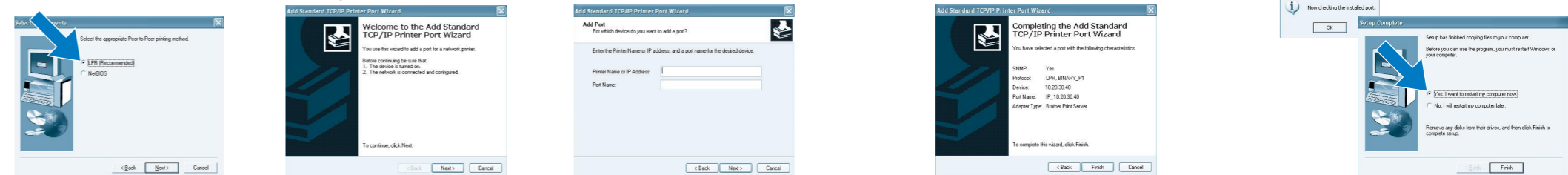
- 1 Select "LPR (Recommended)," and then click the Next button.
- 2 Click the Next button.
- 3 Enter your printer's IP Address and your unique port name, and then click the Next button.
- 4 Click the Finish button, and then click the OK button. Click the Finish button again to restart your PC.



- 5 After your PC has restarted, click **Start, Settings and Printers**.
- 6 Select the Brother HL-2600CN series or Brother HL-3450CN series icon. From the File menu, select **Properties** to open the driver properties.
- 7 Click the **Configure Port...** button in the Ports tab.
- 8 Select "LPR" on protocol, and then click the OK button. Close the driver properties.

The setup is now complete.

For Windows® XP Users Only



- 1 Select "LPR (Recommended)," and then click the Next button.
- 2 Click the Next button.
- 3 Enter your printer's IP Address and your unique port name, and then click the Next button.
- 4 Click the Finish button.
- 5 Click the OK button. Click the Finish button to restart your PC. **After your PC has restarted, setup will be complete.**

Driver Installation Guide

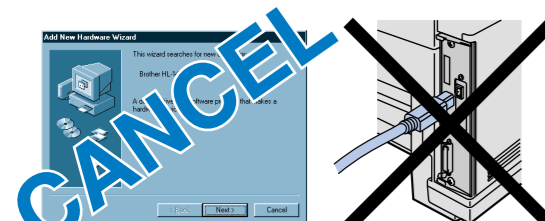
Windows® For non-Network Users

- Follow the instructions in this guide for your interface cable.
- Some illustrations are based on the HL-2600CN series.

Steps 1 to 5 Follow these steps in the **Quick Setup Guide** first.

For USB Interface Cable Users Only

Step 6 Install the Driver & Connect the Printer to Your PC

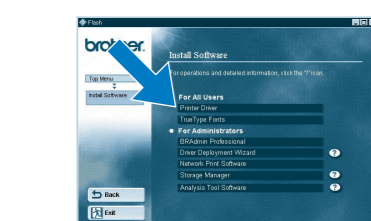


Note: When the "Add New Hardware Wizard" appears on your PC, click the Cancel button.
Note: Make sure the USB interface cable is **NOT** connected to the printer, and then begin installing the driver. If you have already connected the cable, remove it.

1 Insert the CD-ROM into your CD-ROM drive. The opening screen will appear automatically. Follow the instructions on the screen.



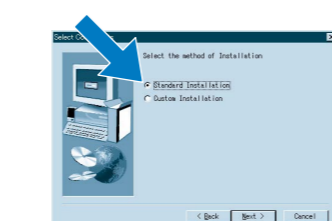
2 Click the Install Software icon on the Menu screen.



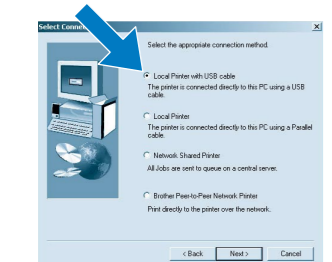
3 Click "Printer Driver."



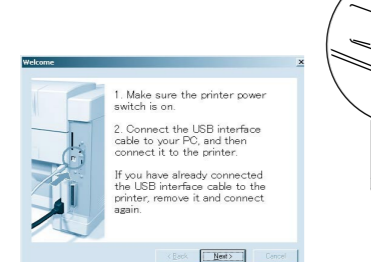
4 Click the Next button. Follow the instructions on the screen.



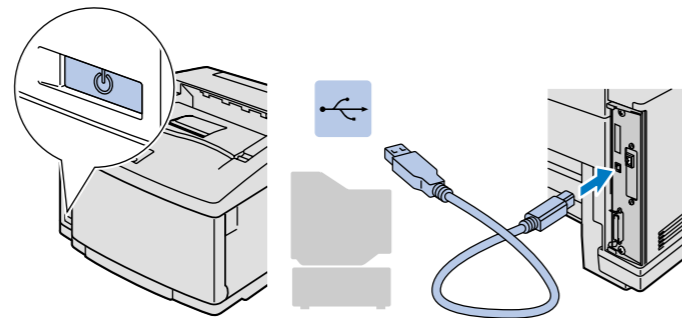
5 Select "Standard Installation," and then click the Next button.



6 Select "Local Printer with USB cable," and then click the Next button.



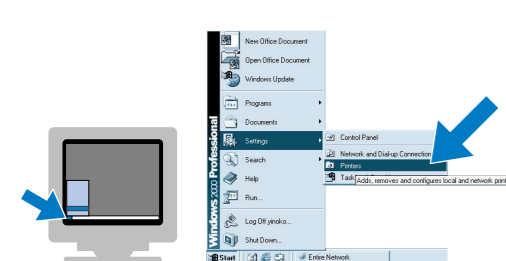
7 When this screen appears, make sure the printer power button is on. Connect the USB interface cable to your PC, and then connect it to the printer. Click the Next button.



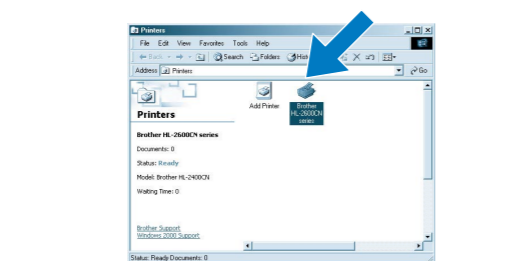
8 Click the Finish button. **The setup is now complete.** *1

*1 Please follow the steps below when the printer is not set as the default printer.

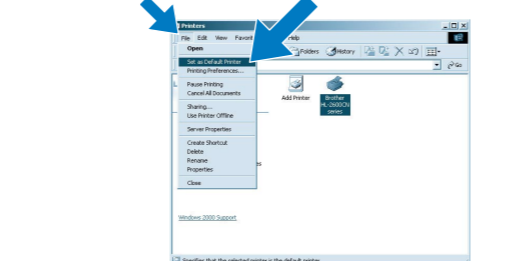
Note: Setting Your Printer as the Default Printer (For Windows® 2000/XP users only)



1 Click Start, Settings and Printers.



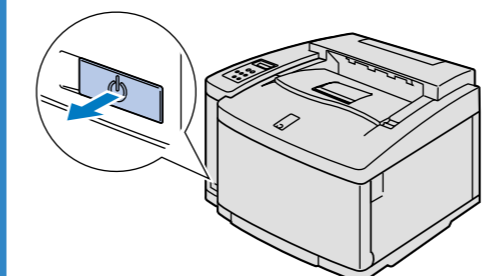
2 Select the Brother HL-2600CN series or HL-3450CN series icon.



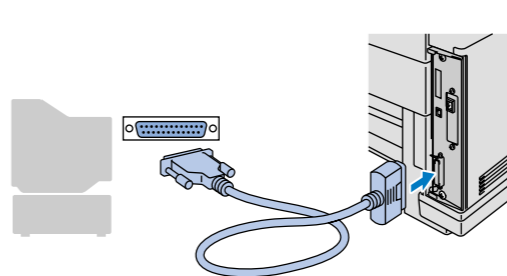
3 From the File menu, select Set as Default printer.

For Parallel Interface Cable Users Only

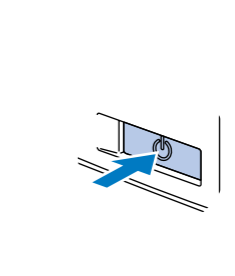
Step 6 Connect the Printer to Your PC & Install the Driver



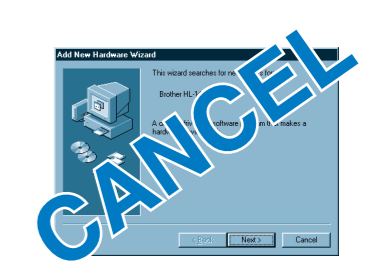
1 Turn off the printer power button.



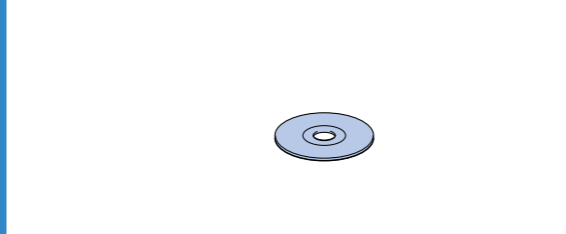
2 Connect the parallel interface cable to your PC, and then connect it to your printer.



3 Turn on the printer power button.



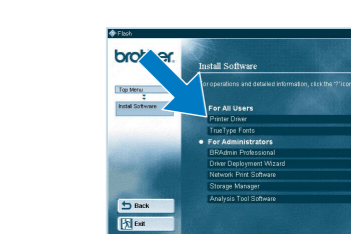
Note: If the "Add New Hardware Wizard" appears on your PC, click the Cancel button.



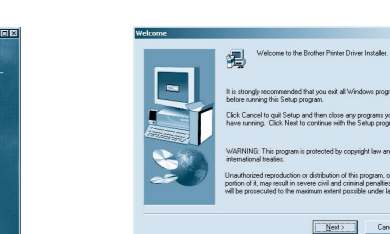
4 Insert the CD-ROM into your CD-ROM drive. The opening screen will appear automatically. Follow the instructions on the screen.



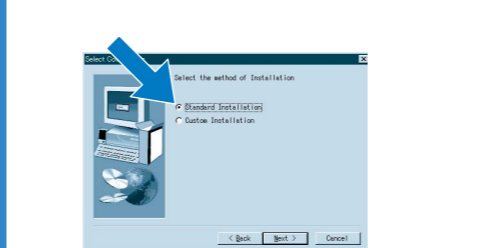
5 Click the Install Software icon on the Menu screen.



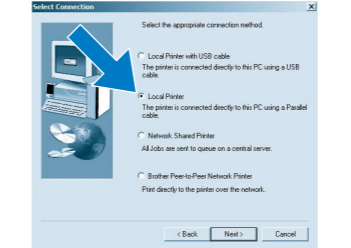
6 Click "Printer Driver."



7 Click the Next button.



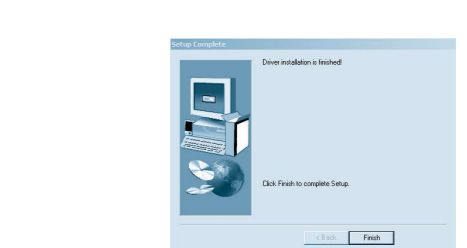
8 Select "Standard Installation," and then click the Next button.



9 Select "Local Printer," and then click the Next button.



10 Select the port where your printer is connected, and then click the Next button.



11 Click the Finish button. **The setup is now complete.**

Control Panel



For more information, see "CONTROL PANEL OPERATION" in Chapter 4 of the User's Guide on the supplied CD-ROM.

LEDs	
Power (Green)	Lights when the printer power is on.
Ready (Green)	Lights when the printer is ready to print or is printing.
Data (Orange)	Lights when data remains in the printer buffer.
	Blinks when the printer is receiving or processing the data.
Alarm (Red)	Lights when the printer has a problem (Operator Call, Error, Service Error) and suspends printing.

Buttons	
Go	Exit from the control panel menu, Reprint settings or clear error messages. Pause / Continue printing.
Job Cancel	Stop and cancel the printer operation in progress.
Secure Print	Print secure documents.
Reprint	Select the Reprint menu.
Menu	+ Move forward through menus.
	- Move backward through menus.
	Set Select the control panel menu. Set the selected menus and settings.
Back	Go back one level in the menu structure.

Language Setting (Default is English)

- Select the **SETUP** mode by pressing the **+** button, and then press the **Set** button.
- Check that the **LANGUAGE** message appears, and then press the **Set** button.
- Choose your language by pressing the **+** or **-** button, and then press the **Set** button. An asterisk mark (*) appears at the end of the display.

(You can return to the **READY** status by pressing the **Go** button.)

Note 1. A real-time clock is built into this printer. Set the time referring to Chapter 4 of the User's Guide on the CD-ROM. You need to set the time before you can use the log management and Reprint functions.
 2. Please enhance the RAMDISK size when you want to use the Reprint functions without the optional HDD or CompactFlash.
 See RAM expansion. In the HL-2600CN User's Guide (Chapter 5) or in the HL-3450CN User's Guide (Chapter 6).

Free Manuals Download Website

<http://myh66.com>

<http://usermanuals.us>

<http://www.somanuals.com>

<http://www.4manuals.cc>

<http://www.manual-lib.com>

<http://www.404manual.com>

<http://www.luxmanual.com>

<http://aubethermostatmanual.com>

Golf course search by state

<http://golfingnear.com>

Email search by domain

<http://emailbydomain.com>

Auto manuals search

<http://auto.somanuals.com>

TV manuals search

<http://tv.somanuals.com>