



USER GUIDE

3-PORT FIREWIRE® PCI CARD

Model: 29970

TABLE OF CONTENTS

Introduction.....	2
Features.....	3
System Requirements.....	4
Package Contents.....	5
Device Installation.....	6
Driver Installation-Windows 98SE/ME/Windows 2000.....	8
Driver Installation-Windows XP.....	10
Driver Installation-Windows Vista/Windows 7.....	12
Troubleshooting.....	14
Cables To Go One Year Warranty.....	15

INTRODUCTION

Thank you for purchasing the 3-Port FireWire PCI Card. This product conveniently adds three 400 Mbps 6-pin ports to your PC or Mac desktop computer with this easy-to-use FireWire PCI controller card. This 32-bit card is fully hot-swappable and daisy-chainable up to 63 devices in peer-to-peer configuration. Plug-and-play so you can download and edit your digital video (DV) for cameras/camcorders; or use with hard disks, scanners, set-top boxes and other high-tech appliances. **We recommend that you read this manual thoroughly and retain for future reference.**

FEATURES

- ❖ Supports 100/200/400 Mbps transfer rate
- ❖ Compliant to IEEE 1394-1995 and 1394a supplement
- ❖ 32-bit PCI Card compliant
- ❖ Supports up to 63 devices in peer-to-peer configuration
- ❖ Compliant with Open Host Controller Interface (OHCI) 1.0 specification

SYSTEM REQUIREMENTS

❖ Windows® 98SE/Me/2000/XP/Vista/7 and Mac® OS 10.X.X or higher

PACKAGE CONTENTS

- ❖ (1) 3-Port FireWire PCI Card
- ❖ User Manual

DEVICE INSTALLATION

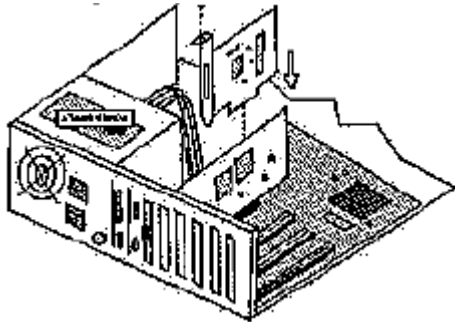
This section will explain how to install the FireWire card into your computer.

Step 1

Power off the computer, then disconnect the power cord.

Step 2

Remove each screw found on the back of the computer and remove the shell from the computer.



Step 3

With the power cord disconnected from your computer, you can touch the metal part of the case to ground yourself. This will discharge any static electricity which can damage your computer.

Step 4

Locate an available PCI slot. This will be in the area of your computer where other cards that look similar to this one are installed.

Step 5

Visually confirm that the Firewire 1394 port will fit into the available slot you have chosen.

DEVICE INSTALLATION

Step 6

If necessary, remove the knockout on the back of the computer which corresponds to the PCI slot you have confirmed as your selection. If there is a screw, place it in a safe spot as you will be using it to attach the FireWire 1394 Port.

Step 7

Push the FireWire 1394 Port card firmly into the PCI slot. Apply pressure as needed until the edge connector is completely sealed.

Step 8

Once the FireWire 1394 is fully seated, the gold edge connectors are completely in the slot.

Step 9

Mount the 1394 Port in place with a screw. Make sure the screw is firmly tightened so the 1394 Port does not slide out of its seated position.

Step 10

Replace the computer's shell and screw it in place.

Step 11

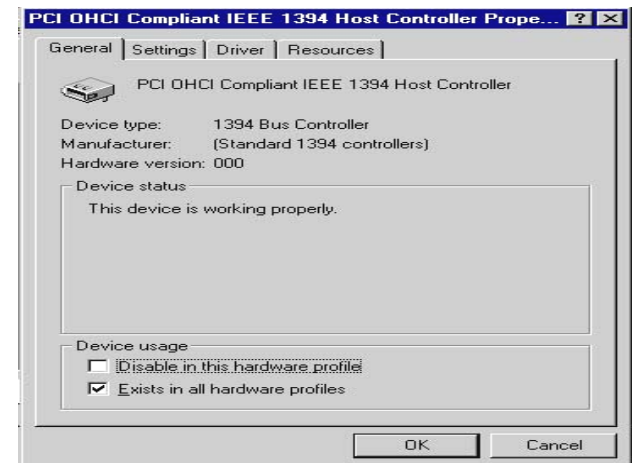
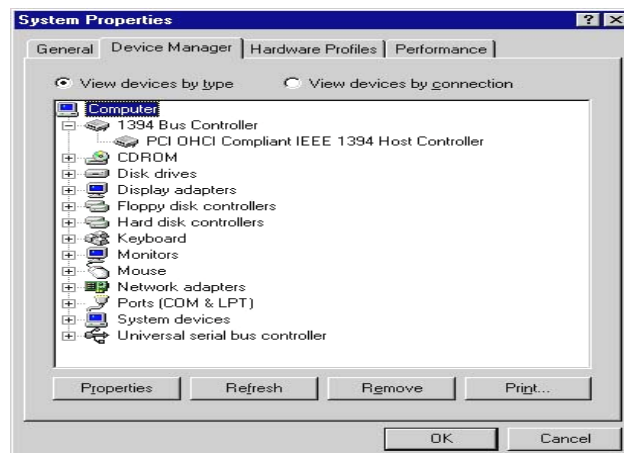
Now that your FireWire 1394 card is installed and the shell is in place, you can safely connect the power cable.

DRIVER INSTALLATION-WINDOWS 98SE/ME/WINDOWS 2000

When you initially connect your FireWire 1394 card, Windows will automatically detect you have a new device the first time you power on your computer and thus request the device software drivers. Please follow the step-by-step instructions below to install the drivers.

Step 1

At the Add New Hardware Wizard, click on **“Next”**



Step 2

Select the option **“Search for the best driver for your devices (Recommend)”**, and click on **“Next”**.

Step 3

Select the option **“CD-ROM driver”** then click on **“Next”**.

DRIVER INSTALLATION-WINDOWS 98SE/ME/WINDOWS 2000

Step 4

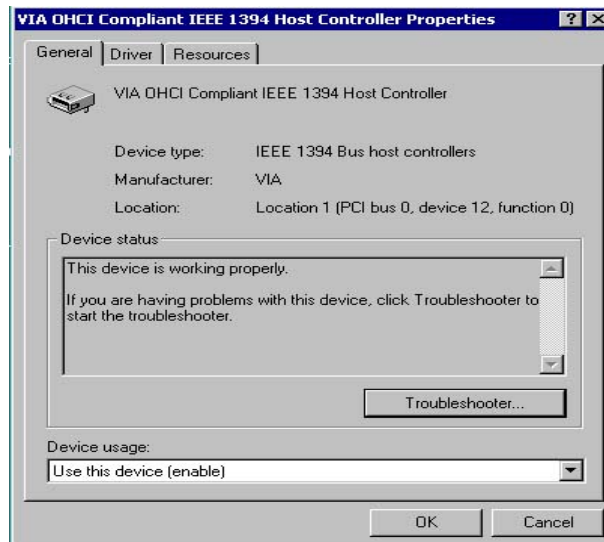
Click “Next” and then “Finish” respectively.

Step 5

Reboot your computer for setup to take effect.

Verify Installation

From the main desktop, click on My Computer, then double-click on Control Panel → System → Device Manager and you will see the FireWire card listed in the device list.



DRIVER INSTALLATION-WINDOWS XP

Step 1

At the Add New Hardware Wizard, click on **“Next”**

Step 2

Select the option **“Search for the best driver for your devices (Recommend)”**, and click on **“Next”**

Step 3

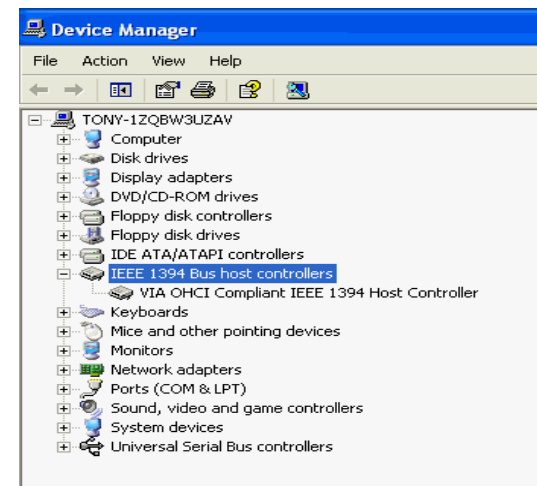
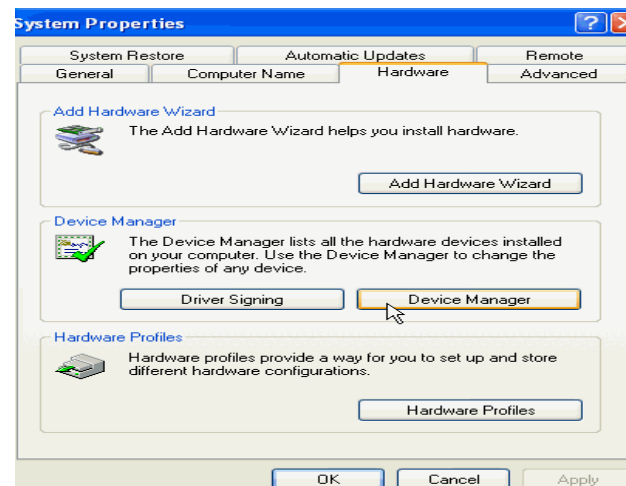
Select the option **“Specify the location”**, and type in C: then click on **“Next”**

Step 4

Click **“Next”** and then **“Finish”** respectively.

Step 5

Select **“Yes”** to reboot the computer for the setup to take effect



DRIVER INSTALLATION-WINDOWS XP

Verify Installation

From the main desktop, click on **“My Compute”**, and then double-click on **“Control Panel”**, **“System”**, and **“Device Manager”**.

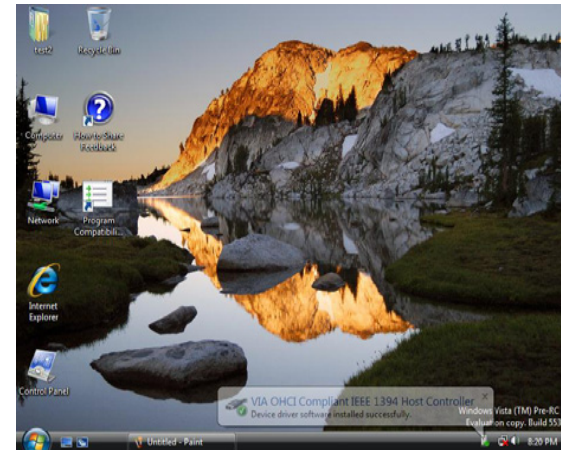
DRIVER INSTALLATION-WINDOWS VISTA/ WINDOWS 7

Step 1

Start power to run Windows Vista or Windows 7

Step 2

Windows will automatically detect you have a new device the first time you power on your PC and thus request the devices software drivers.



Step 3

Detect you have device to Install device software

DRIVER INSTALLATION-WINDOWS VISTA/ WINDOWS 7

Step 4

Install the driver “**VIA OHCI Compliant IEEE 1394 Host ontroller**”

Step 5

Check “**Device Manager**” to “**IEEE 1394 Bus host controllers**” and the “**VIA OHCI Compliant IEEE 1394 Host Controller**”



TROUBLESHOOTING

If after installing the drive and loading the software and you find that the PCI 1394 card is not functional, try these suggestions first.

- Are ports active on the card conflicting with equivalent ports in the computer?
- Is the card inserted snugly into the slot on the main board?

CABLES TO GO™ ONE YEAR WARRANTY

At Cables To Go, we want you to be totally confident in your purchase. That is why we offer a one year warranty on this device. If you experience problems due to workmanship or material defect for the duration of this warranty, we will repair or replace this device. To request a Return Merchandise Authorization (RMA) number, contact customer service at 1-800-506-9606 or www.cablestogo.com.



Cables To Go
3555 Kettering Blvd.
Moraine, OH 45439
1-800-506-9607
www.cablestogo.com

©2010. Cables To Go. Microsoft , XP, and Vista are either registered trademarks or trademarks of Microsoft Corporation in the United States and/or other countries. Mac is either a registered trademark or trademark of Apple. This product is not endorsed or manufactured by Microsoft Corporation or Apple.

For more information on this product or to check for updated drivers, manuals or frequently asked questions please visit our website.

www.cablestogo.com



VER. 1.0.3.22.10

Free Manuals Download Website

<http://myh66.com>

<http://usermanuals.us>

<http://www.somanuals.com>

<http://www.4manuals.cc>

<http://www.manual-lib.com>

<http://www.404manual.com>

<http://www.luxmanual.com>

<http://aubethermostatmanual.com>

Golf course search by state

<http://golfingnear.com>

Email search by domain

<http://emailbydomain.com>

Auto manuals search

<http://auto.somanuals.com>

TV manuals search

<http://tv.somanuals.com>