

Contents

Introduction	2
1. Making the physical connection.....	3
2. Setting up IP addresses for network devices	4
3. Setting up your PC - Windows 2000	4
How do I get my PC on to a network using Dynamic IP addressing?	
3.1 Setting up a Dynamic IP address.....	4
How do I get my PC on to a network using Static IP addressing?	
3.2 Setting up a Static IP address.....	5
How do I get my 640H on to a network?	
3.3 Setting up the IP address for the 640H	6
How do I test that my PC and 640H are correctly networked?	
3.4 Testing your Network configuration	7
How do I get my PC to share my music folder over a network?	
3.5 Setting up your PC to share music over a network.....	7
How can I test to see if my music folder is shared on the PC where it is located?	
3.6 Testing your Music folder to see if it is Shared over a Network	8
How do I access/change the name of the 640H?	
3.7 Changing the 640H Name.....	8
How do I get the Guest account in Windows turned on?	
3.8 Enabling the Guest Account	9
How do I get my 640H to access the music folder on my PC?	
3.9 Adding Content to your 640H from your PC.....	10
How do I access the 640H from a PC?	
3.10 Accessing the 640H from a PC.....	11
4. 640H network advice.....	12
5. Lead descriptions.....	14

Introduction

The 640H has many extra features which can be accessed by connecting it to the internet, or connecting it to a computer network. To a novice, this can be a complicated process. However, with the help of this guide, we aim to take you through it step-by-step.

The procedure for connecting to a network is broken down into the following steps:

- Making the physical connection (i.e. cable)
- Setting up the IP address for the PC
- Setting up the IP address for the 640H
- Testing the Network configuration

The procedure of adding content from a PC to the 640H is as follows:

- Setting up a shared folder on the PC
- Naming your PC
- Testing the shared folder
- Naming the 640H
- Enabling the PC's guest account
- Displaying the PC's content on the 640H
- Accessing the 640H from a PC

1. Making the physical connection

This document explains how to connect your 640H to a network. Networking (i.e. connecting devices together) can allow you to expand the overall capabilities of your 640H. By networking your 640H to a PC, Mac or other device, you will be able to have access to (and play) music files stored on other devices. You can also access the internet for CD database lookup and internet radio.

Before setting up your network, we encourage you to read through the entire section and then decide on the network layout that you wish to implement. We advise this because different network layouts require different setups of your 640H and your computer.

Network connection selection

There are many network variations you can make with your 640H, but to keep things simple we will be explaining some basic network types:

Network Type A: "Basic" Wired Network via Cable set-top box modem



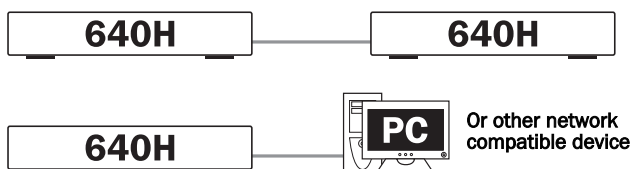
If you have a broadband (internet connection) service supplied by your telecom provider but you do not have a PC/Mac, you can connect directly to the built in modem in your Cable set top box to access the CD recognition and internet radio (iRadio) features on the 640H.

Your modem plugs into the telephone or cable TV sockets (for DSL and cable broadband modems respectively), and converts the incoming signals into Ethernet format.

While your set top box and 640H are switched off, make a wired connection between the two units via an Ethernet cat5e lead (see the '640H network advice' section for more information). Switch on the modem and follow your broadband connection set up and set top box instruction manual to check it has a connection to the internet. Once you have confirmed this, switch on the 640H. When the 640H has finished its start up checks and has the UI (User Interface) displayed, check the Ethernet connection on the rear panel of the 640H. If the green LED above it is lit, there is a good physical connection to the modem.

Note: It is also possible to add a cable broadband router to the set top box, and plug the 640H into the router (see Network Type C).

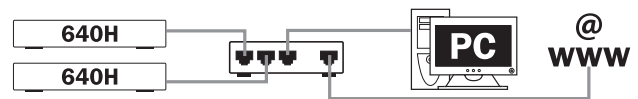
Network Type B: "Peer to Peer" Wired Network with no Router, Hub or Switch



This involves connecting one 640H to another 640H or network compatible device (i.e. a PC/Mac). This is a network where only two units are connected directly to each other with no router, hub or switch. When networked, the 640H can play, burn a copy or transfer music from the other device.

To connect the two devices together, you must use an Ethernet cross-over lead (see the '640H network advice' section for more information). Plug one end of the lead into the 640H Ethernet port and the other end into the other devices' Ethernet port. If the green LED above the 640H Ethernet port is lit, there is a good physical connection to the other device.

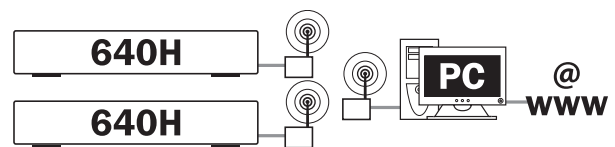
Network Type C: "Home" Wired network via a Router, Hub or Switch



This is the most common network where a router (a device that routes signals from the phone line to multiple network devices on a network), hub or switch (devices that allow data to be shared between many network devices) is used to connect multiple devices together. These could be one or more 640H's, PC's, Macs and network devices. Each 640H can then play back or move content from/to other devices. If connected to the internet (via a router or PC/Mac), the 640H can also access the CD recognition and internet radio (iRadio) features. Using a router is the recommended way to connect 640H's to other 640H's and network devices.

If you already have an existing home network, then adding the 640H to it is simple via an Ethernet cat5e lead from the 640H to the router, hub or switch. If you do not currently have a network, then we recommend you seek expert help on computer networking configuration.

Network Type D: "Wireless" Network



The 640H supports wireless networking via its Ethernet port. To make the 640H wireless, you need to purchase a "Wireless Ethernet Bridge" (a device that converts an Ethernet wired connection to a wireless connection) from any good IT retailer. The 640H is connected to the bridge via an Ethernet Cat5e lead.

Although these devices operate wirelessly, they appear to the 640H as a normal Ethernet connection, and therefore the 640H is setup in the same way as the wired networks described above. The 640H is compatible with the wireless 802.11b and 802.11g standards.

Note: The Wireless Ethernet Bridge that you purchase will need setting up according to your network setup and the instructions that come with the bridge. Before connecting the bridge to the 640H, it is always best to test that the bridge is fully set up to your network according to the bridges' user instructions.

2. Setting up IP addresses for network devices

Once your network connections have been made, for the connected devices to communicate to each other you will need to specify the unique "IP address" for the device (i.e. like a house number, and street name so the house can be identified for posting letters).

There are two types of IP address; DHCP (Dynamic Host Configuration Protocol), which is more commonly known as dynamic addressing, and static. Dynamic is used when you have a router, set-top box modem or a PC/Mac with DHCP server enabled, as they can automatically give each device an IP address upon physical connection. We encourage the use of dynamic addressing as this is the default mode of the 640H, and therefore no further setup would be required for the 640H.

Note: With a DHCP assigned IP address, it is possible that the 640H will have a different IP address assigned to it, if left switched off over night. This is normal and will not cause a problem.

We recommend using static IP addressing for peer-to-peer networking only. The static address will not change unless you manually change it. This is particularly useful for network troubleshooting.

3. Setting up your PC - Windows 2000

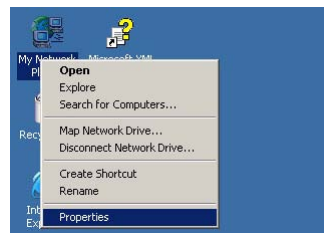
These instructions are for setting up your 640H network with a PC using Windows 2000.

If your network is connected to a Domain (Domain Name Controller - i.e. when you are required to state a domain name when you log on to a Windows PC) you need to turn to the "640H network advice" (4.) section before continuing.

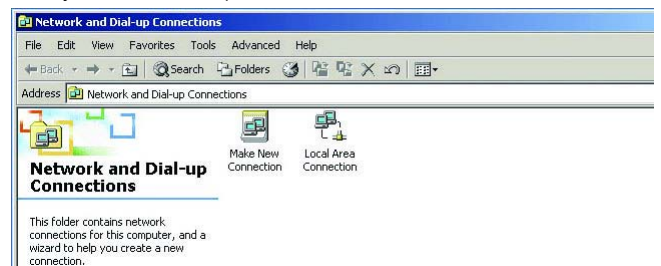
Note: If you are using a wireless network, please consult the manual of your wireless network adaptor for setting up an IP address for your PC and skip to the "Testing your Network configuration" (3.4) section.

3.1 Setting up a Dynamic IP address

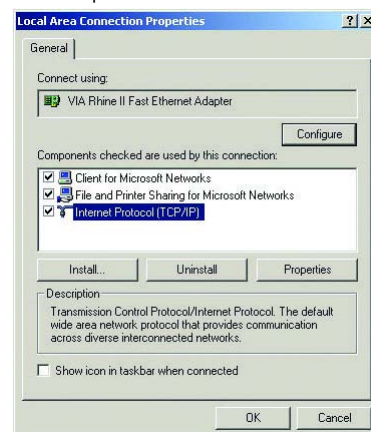
1. Right click on "My Network Places" and select "Properties": "My Network Places" can be found in one of two locations - the desktop of your PC or in control panel. In the control panel it is called "Network and Dial-up Connections" and here you need to double left click.



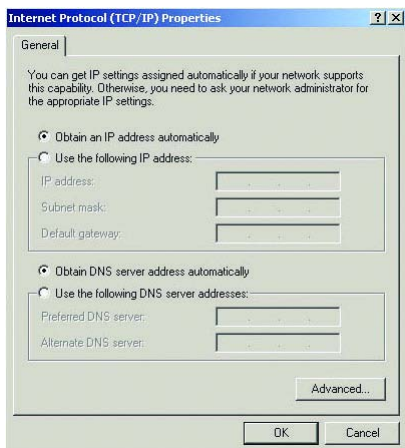
2. Right click on the network connection corresponding to the Ethernet port on your PC (the one that is connected to the 640H via the Ethernet cat5e lead) and select "Properties". In most situations this connection is called "Local Area Connection" however it may be called "Local Area Connection 1", "Local Area Connection 2" etc depending on your network setup:



3. In the window that appears, select "Internet Protocol (TCP/IP)" and then click on the "Properties" button:



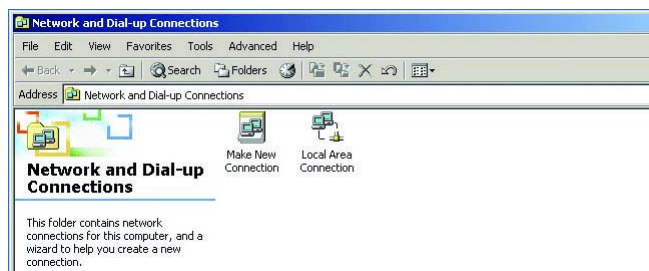
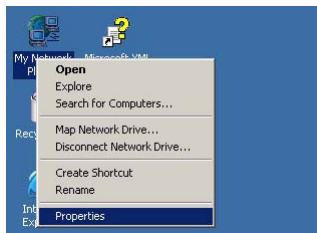
4. The following window that appears is split up into two sections; The IP address setup and DNS setup. In the IP address setup there are two options; "Obtain an IP address automatically" and "Use the following IP address". The DNS set up should be as specified by your ISP.
5. Select "Obtain an IP address automatically" and click "OK". **Note:** The PC may take a while to update. Close the window. Click "OK" on the next window and close all the other windows:



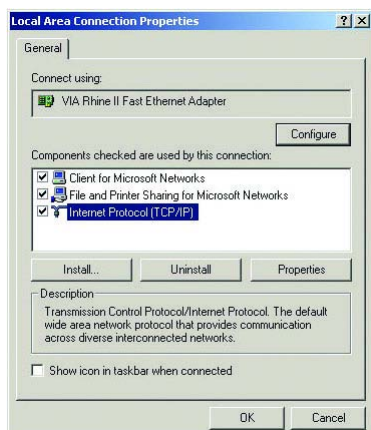
This process is now complete.

3.2 Setting up a Static IP address

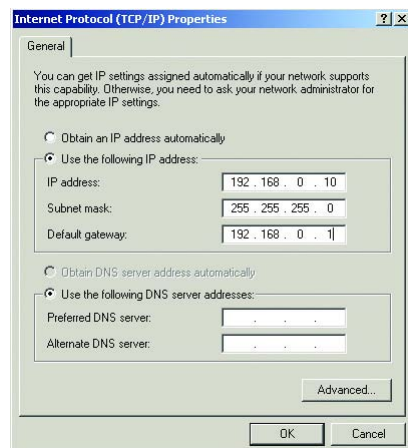
- Right click on "My Network Places" and select "Properties": "My Network Places" can be found in one of two locations - the desktop of your PC or in control panel. In the control panel it is called "Network and Dial-up Connections" and here you need to double left click.
- Right click on the network connection corresponding to the Ethernet port on your PC (the one that is connected to the 640H via the Ethernet cat5e lead) and select "Properties". In most situations this connection is called "Local Area Connection" however it may be called "Local Area Connection 1", "Local Area Connection 2" etc depending on your network setup:



- In the window that appears, select "Internet Protocol (TCP/IP)" and then click on the "Properties" button:



- The following window that appears is split up into two sections; The IP address setup and DNS setup. In the IP address setup there are two options; "Obtain an IP address automatically" and "Use the following IP address". The DNS set up should be as specified by your ISP.
- Select the option "Use the following IP address".
- This should then un-grey the following input boxes: "IP address," "Subnet mask" and "Default gateway."
- The IP address can be entered to be any numbers as long as they match the rest of your network. The preferred method is 192.168.0.X where X is a number unique to the device, i.e. PC, between 1 and 254. The full stop's (.) are in the text box by default.
- The Subnet mask should be set to 255.255.255.0. Windows should set this by default when selected. The full stop's (.) are in the text box by default.
- The Default gateway is the device that is controlling the internet connection. In the text box, you need to type the IP address of this device. By convention, X for the default gateway is 1. So using 192.168.0.X, the Default gateway should be set to 192.168.0.1 in the text box:



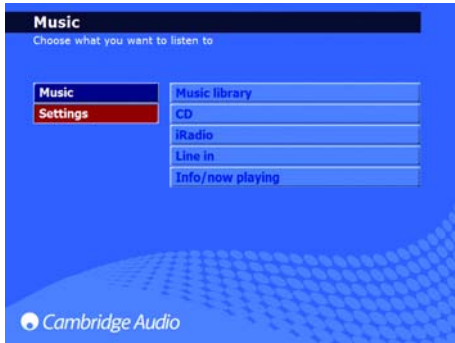
- Click "OK" and the window will close (this may take a little time as the computer needs to set the information you have provided). Click "OK" on the corresponding windows.

This process is now complete.

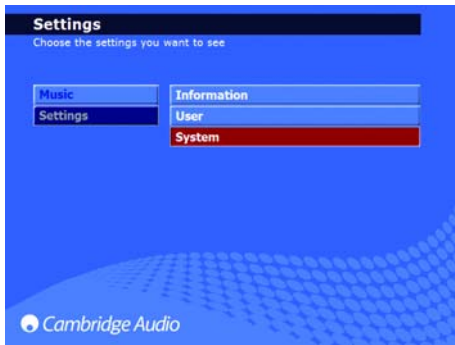
3.3 Setting up the IP address for the 640H

If you are using Dynamic DHCP IP addressing, the 640H is defaulted to receive an IP address and you can skip this step. If you wish to set up a static IP for the 640H, then follow these instructions:

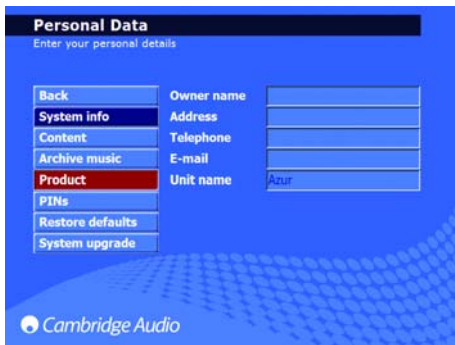
1. In the main menu, select "Settings" in the left hand menu:



2. In the right hand menu that appears, select "System":



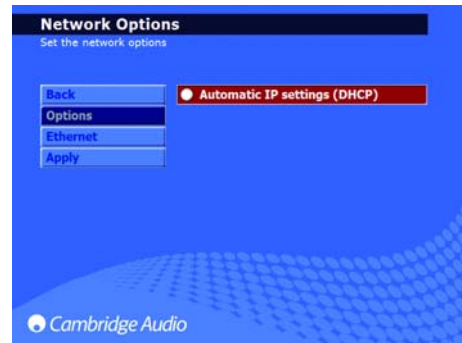
3. Now select "Product":



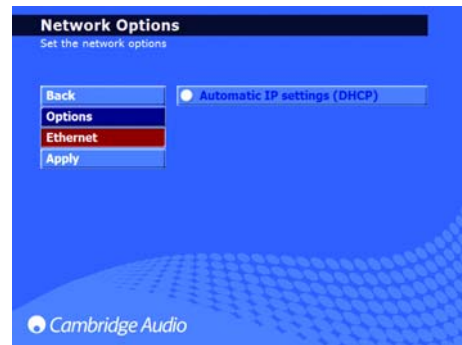
4. Select "Network":



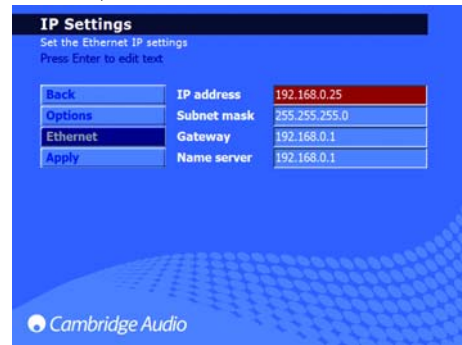
5. In the "Network Settings" page that now appears, there is a menu item called "Automatic IP settings (DHCP)". Deselect this and click apply. This now turns off Dynamic DHCP addressing. The request could take a few seconds to take effect:



6. When Dynamic DHCP addressing has been turned off, select the "Ethernet" menu item:



7. This brings up four text input boxes that you can change: IP address, Subnet mask, Gateway and Name server. As with your computer setup, the IP address should be 192.168.0.X where X is a number between 1 and 254 that is unique to the 640H. The Subnet mask should be set to 255.255.255.0. The Gateway and Name server should be set to the IP address of the device controlling your internet connection (i.e. router). If you are using a network with no internet connection, the Gateway and Name server should be set to the IP address of the network device you are connecting to (i.e. PC/Mac or another 640H etc):



8. After you have entered the correct information, click "Apply" to store the settings. This may take a few seconds to take effect:



The process is now complete.

3.4 Testing your Network configuration

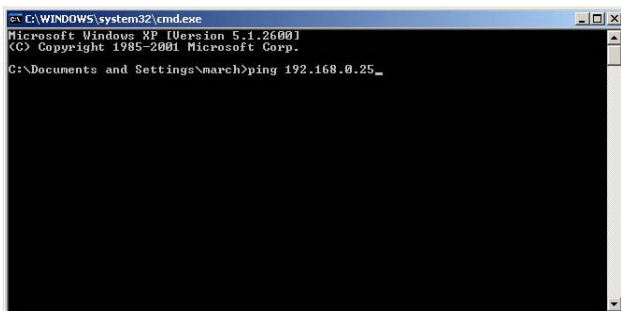
Now you have set up a basic network, it is strongly recommended to make sure it is working before continuing. To do this you need to "ping" (Packet InterNet Groper) the 640H from your PC. Ping is the most basic form of communication between two devices, as it is just a confirmation tool that the link is working correctly.

Ping a 640H from a Windows PC

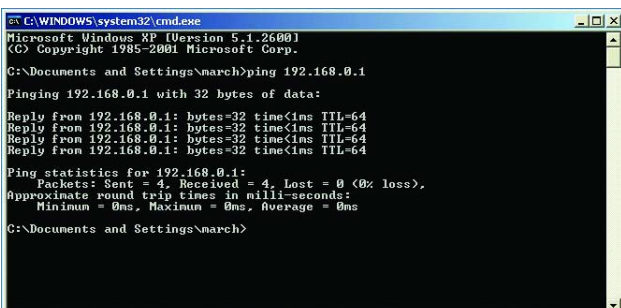
1. Click "Start".
2. Select "Run".
3. Type "cmd" and press the "Enter" key. This will bring up a black command prompt window:



4. In the command prompt, type "ping IP address" followed by the enter key, where IP address is the IP address of the 640H (see above under "Setting up the IP address for the 640H" to find out the IP address of your 640H):



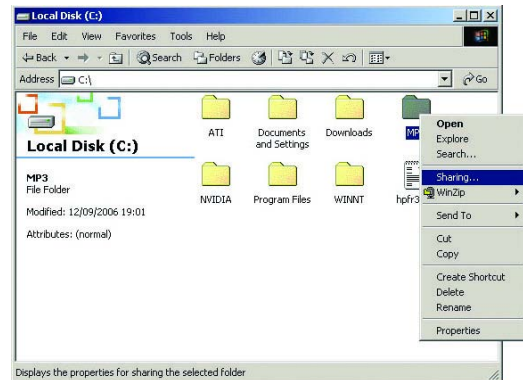
5. When the "Enter" key has been pressed one of three messages could appear:
 - a. Destination Host Unreachable.
 - b. Request Time Out.
 - c. Reply from (IP address here): bytes=32, time (time in ms), TTL=64



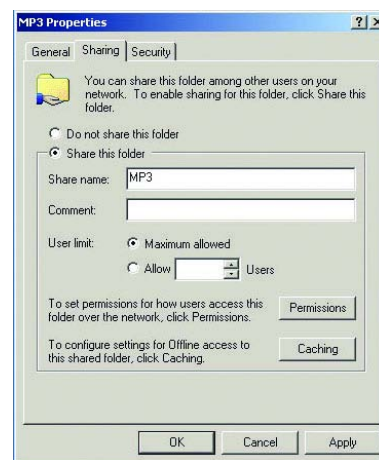
6. If you get one of the first two messages, please check your leads and computer setup by going through the procedures listed above again. If you see the third message then the network has been setup correctly. Type "exit" in the command prompt and press the "Enter" key. This will close the command prompt.

3.5 Setting up your PC to share music over a network

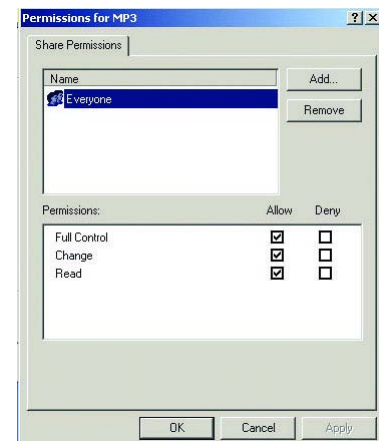
1. If you are using iTunes or other ripping software that has a default folder where your MP3's are stored, please check the folder is shared by following steps three to six below.
2. It is however recommended to create a folder in your root directory, (i.e. C:\ drive if on the same hard drive as windows or alternate suffix if your music is on a different hard drive, i.e. D:\, E:\ and so on) called MP3. All your music should be placed in this folder.
3. If you right click on the folder, select "Sharing" from the menu. This will un-grey the rest of the window:



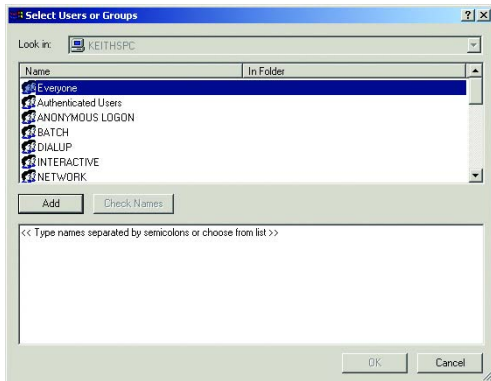
4. In the properties window that now appears, you need to select the button labelled "Share this folder". In the "Share name" text box type "MP3". Ignore the comment text box and in the user limit section, select the "Maximum Allowed" button:



5. Now press the "Permissions" button.
6. Select "Everyone" in the window that appears and set the permissions to allow everybody "Full control", "Change" and "Read" in the buttons below:

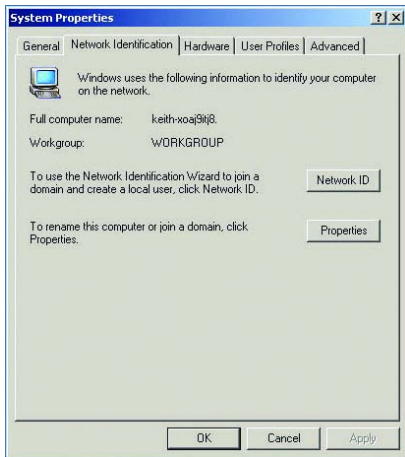


7. If "Everyone" is not listed in the window, press the "Add" button. Select "Everyone" and press "OK". Repeat step 6 above:

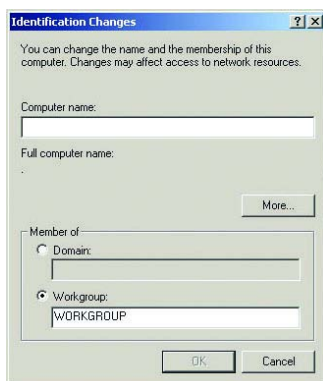


8. Close all the windows by pressing OK.

9. To be able to access your MP3's from other network devices, you need to know the name of your PC. To do this, on the "My Computer" icon, right click the icon and select "Properties". In the Properties window that now appears, select the "Network Identification" tab:



10. Note the "Full computer name" in the new window. This should be a simple one word name with no spaces or special characters; we recommend the room where your PC is. To change the name of your computer, click the "Properties" button, type the new name in the "Computer name" text box and press "OK". Press "OK" again:



You may be prompted to restart your computer for the changes to take effect. If this is the case, restart your PC.

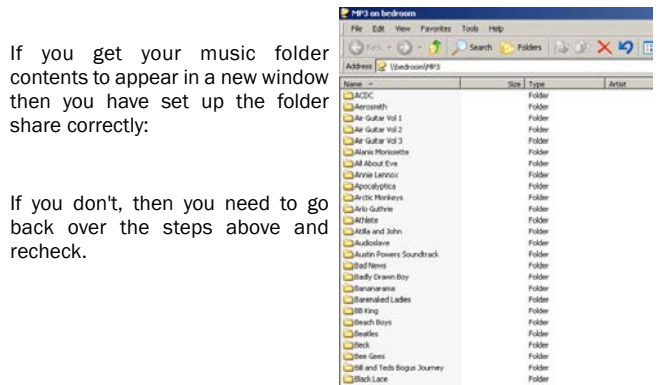
3.6 Testing your Music folder to see if it is shared over a Network

On the PC where you have just set up your music folder to be shared, you can test whether it has been shared by carrying out the following:

1. Select "Start" and then select "Run":



2. In the run prompt type: \\computer name\music folder name where the computer name is the name you have given to the PC as described above, and the music folder name is the shared name of your music folder as described above:



If you get your music folder contents to appear in a new window then you have set up the folder share correctly:

If you don't, then you need to go back over the steps above and recheck.

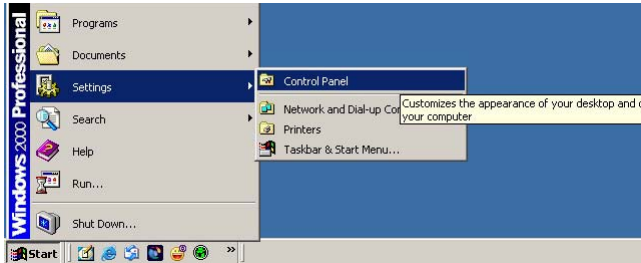
3.7 Changing the 640H name

As with a PC, the 640H needs to have a unique name over the network. This name by default is "Azur" and is located in Settings/System/System Info/Unit Name menu of the 640H. It is recommended to change this name to a simple one word name with no spaces or special characters, i.e. the room where the 640H is situated (loungue). If the 640H and PC are in the same room, then please use a suitable one word alternative.

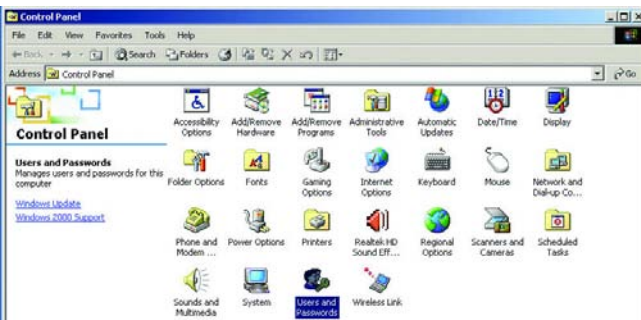
Note: By default, the folder where all your music content is placed is called "media". Please see "Accessing the 640H from a PC" section for more.

3.8 Enabling the Guest Account

1. Go to "Control Panel" either by double clicking on the "My Computer" icon on the desktop and double click on "Control Panel", or click the "Start" button, select "Settings" then "Control Panel":



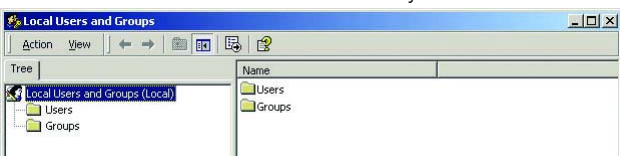
2. Double click on the "Users and Passwords" icon:



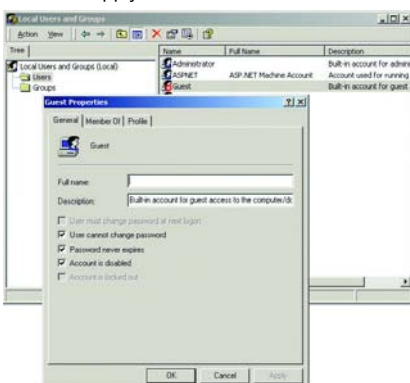
3. Select the "Advanced" tab and in the "Advanced User Management section", click "Advanced":



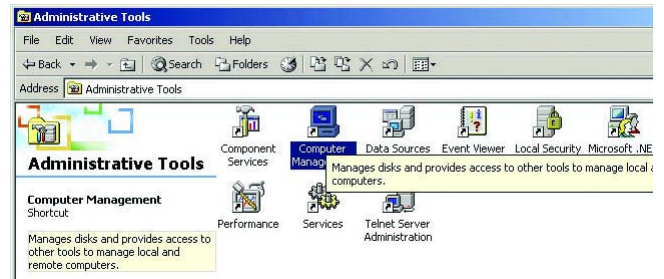
5. Select the "Users" folder. All users on the system will be listed:



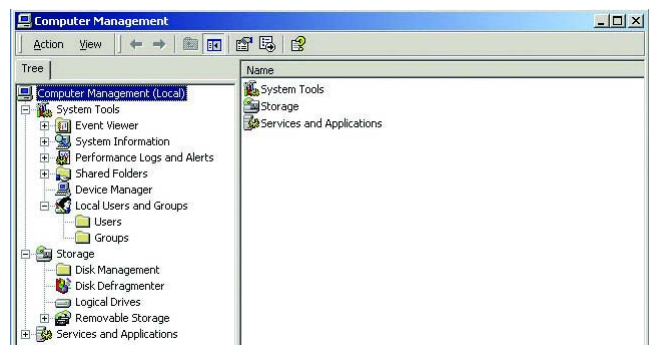
6. Right-click the Guest account and select "Properties".
7. In the window that now appears, un-tick the box labelled "Account is disabled" and click "Apply":



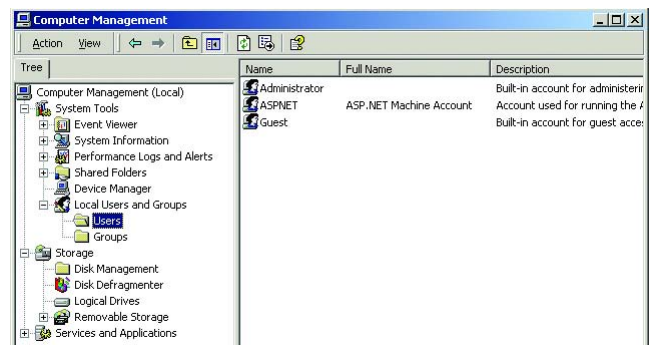
8. Close all windows until you get back to the "Control Panel" window.
9. To make sure the guest account has been activated, double left click on the "Administrative Tools" icon.
10. Double left click on the "Computer Management" icon:



11. In the new window that appears, expand the "Local Users and Groups" tree on the left hand side of the window:



12. Select the "Users" folder.
13. On the right hand window that now appears, there should be a list of all the user accounts on your PC:

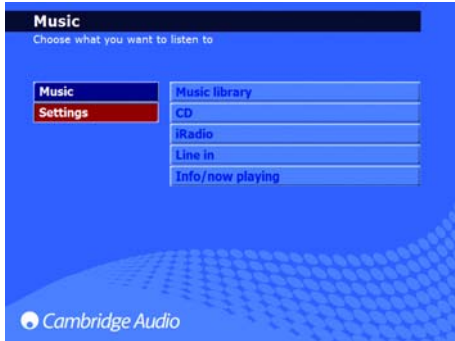


14. If the Guest Account icon has a red cross on it, it hasn't been activated. To activate the account, double left click on the icon. If the icon doesn't have the red cross in it, close all windows and skip Step 15 below.
15. In the window that now appears, un-tick the box labelled "Account is disabled" and click OK.
16. Close all opened windows.

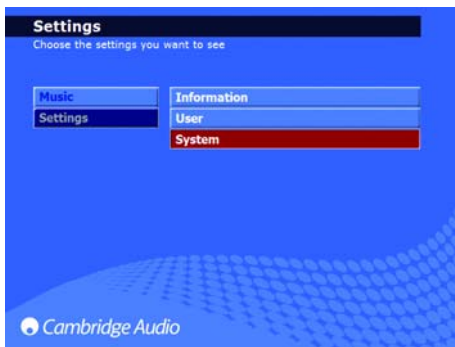
3.9 Adding Content to your 640H from your PC

Now your 640H and PC are set up for network communications, the last step is to actually get the content of your PC accessible via the 640H.

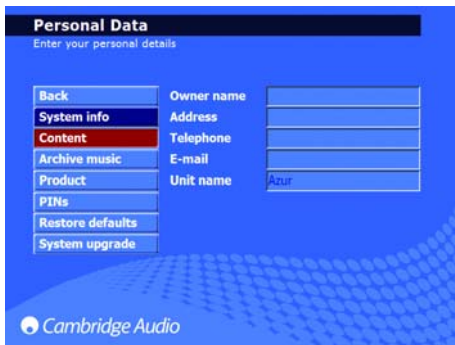
1. In the main menu of the 640H, select "Settings" in the left hand menu:



2. In the right hand menu that appears, select "System":



3. Now select "Content":



4. In the "Content Settings" menu (rescan location), select "Add Location":



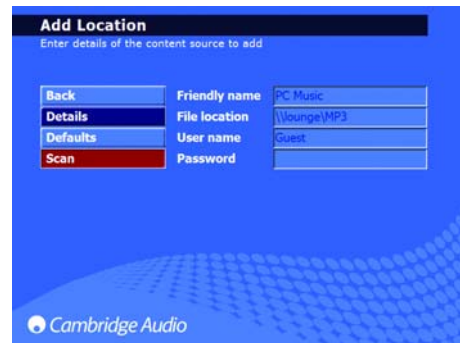
5. This now brings up four settings that you can change: Friendly name, File location, User name and Password.

6. For the Friendly name, you can enter anything you like to denote what your selection is. For example, if you have chosen to add your whole collection to the 640H, it could be "My PC Music." If you only add a particular artist, album etc, then it could be the name of the artist or album.

7. The File location, as the name suggests, is where you enter the location of your MP3 music on your computer. The way you enter the file location is as follows: \\computer name\MP3 share folder name, i.e. \\lounge\MP3. The computer name and MP3 share folder name is as described in the "Setting up your PC to share music over a network" section earlier.

8. It is possible to add many locations to your 640H either from different network devices or from the same network device (i.e. PC). This also means you can add different folders to your 640H content from within your main MP3 folder. To do this, for example, say you have music on your main computer in folders called "Aerosmith" and "Robbie Williams," that exist in your MP3 folder, if you want to add these folders individually, you enter (using the lounge\MP3 example above): \\lounge\MP3\Aerosmith and \\lounge\MP3\Robbie Williams. **Note:** you have to go through the process "Adding Content to your 640H from your PC" as described here for each location you want to add.

9. The username should be left as default "Guest" and the password should be left as default blank (no text):



10. Select the "Scan" button and then select "Start." This will then scan your computer and create a database in the 640H listing the contents of the PC. Note: The actual music file does not get transferred. This is done in two stages: "Scanning content" and "Updating the database". Both can take a long time depending on the amount of songs you have in your collection. When the process is completed, you will see the computer contents in your music library:



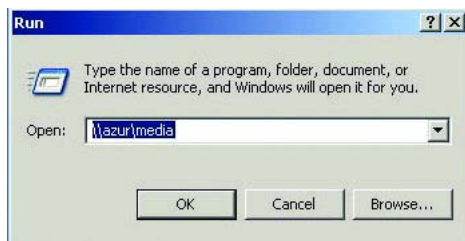
3.10 Accessing the 640H from a PC

If you wish to play content on your 640H but from your PC, you need to do the following:

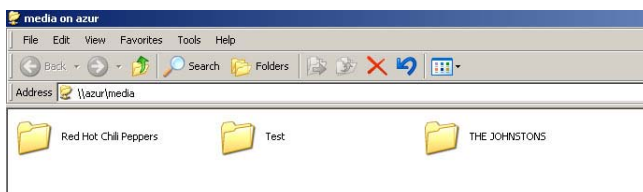
1. Press "Start".
2. Select "Run":



3. Type \\640H Name\media, where 640H name is the "Unit name" you have assigned to the 640H located in Settings/System/System Info/Unit name on the 640H:



4. Press the "Enter" key.
5. A new window will now appear showing the contents of the 640H:



You have now finished setting up your 640H to work over a network.

4. 640H network advice

4.1 Virus's and Spy-ware

Virus's and spy-ware are the biggest security risks facing computer systems today. It is recommend to periodically update your anti-virus and anti spy-ware software then scan your PC/Mac hard drive for potential infections. Such infections can bring down your internet and network connections with dire consequences. Please also make sure that your computer operating system is always fully up-to-date!

4.2 Privacy filter / Firewall

If you have a Firewall on your router or a privacy filter/Firewall on your computer, you may need to set the permissions on the Firewall to allow traffic to and from your computer and the 640H. Please see the instructions of your firewall/privacy filter for guidance.

4.3 640H content management

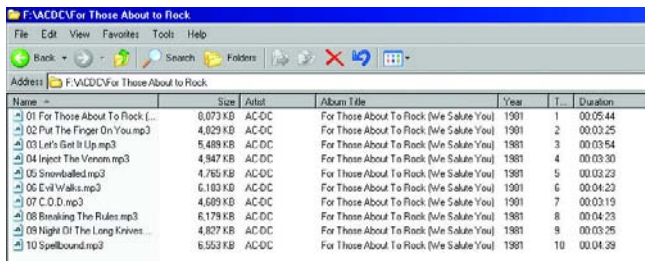
The 640H creates its database of content on your PC/Mac based on the artist, album name, track name and genre of each track. As you rip CD's, the 640H stores the CD contents on the 640H Hard Drive in a series of folders. It does this in the order of Artist, Album and Track Name (track name as a file). If the 640H scans for content from USB devices or over a network, the 640H adds their content to its database based on the file name you give for the MP3s and also their Genre, Artist, Album and Description (Title) tags.

MP3, WMA, AAC and other compressed audio formats have the above tags embedded into them. This allows the track number, year of release, track name, album name and artist name to be stored in the file itself. The 640H uses some of this information when creating its database of stored and scanned content.

When ripping CD's from the 640H, the automatic freedb lookup (freedb is the online service that holds a database of artists, albums and tracks) will fill in the details for you. If you put the information in by hand, the 640H will assign the album name, artist name and genre for each track based on what you enter.

For the 640H database to be accurate when you scan content from USB sticks or over a network, some rules must be observed:

1. Make sure the artist name for each song in the album is the same. If you are ripping a compilation album where the artist of each track is listed individually, then this must be changed to Various, Various Artists etc.
2. Make sure the album name and genre for each track within the album are the same.
3. Make sure each track file name starts with the track number. Tracks 1-9 need to be labelled as 01, 02, 03 etc as apposed to 1, 2, 3 etc.
4. A good example of what the data should look like is shown here:



Name	Size	Artist	Album Title	Year	T	Duration
01 For Those About To Rock (...)	6,073 KB	AC/DC	For Those About To Rock (We Salute You)	1981	1	00:05:44
02 Put The Finger On You.mp3	4,829 KB	AC/DC	For Those About To Rock (We Salute You)	1981	2	00:03:25
03 Let's Get It Up.mp3	5,488 KB	AC/DC	For Those About To Rock (We Salute You)	1981	3	00:03:54
04 Inject The Venom.mp3	4,947 KB	AC/DC	For Those About To Rock (We Salute You)	1981	4	00:03:30
05 Scrembled.mp3	4,765 KB	AC/DC	For Those About To Rock (We Salute You)	1981	5	00:03:23
06 Evil Walks.mp3	5,183 KB	AC/DC	For Those About To Rock (We Salute You)	1981	6	00:04:23
07 C.O.D. mp3	4,689 KB	AC/DC	For Those About To Rock (We Salute You)	1981	7	00:03:19
08 Breaking The Rules.mp3	6,178 KB	AC/DC	For Those About To Rock (We Salute You)	1981	8	00:04:28
09 Night On The Long Knives...	4,827 KB	AC/DC	For Those About To Rock (We Salute You)	1981	9	00:03:26
10 Spellbound.mp3	6,553 KB	AC/DC	For Those About To Rock (We Salute You)	1981	10	00:04:39

If these rules are not followed, then the 640H will not store each album in its database correctly and therefore will display incorrect information.

If you wish to alter the content of your 640H via a PC or Mac (i.e. names of files, album art, tags etc) then it is recommended to do this periodically (i.e. when you have a large amount of albums that need to be changed) instead of doing it for each album at a time. This is because when you alter the 640H from another device, you have to "Rescan" the 640H via Settings/System/Product/Rescan so the 640H can go over its database to see what has changed and alter it accordingly.

In each folder on your 640H, there are two files; cddb.nfo and attributes.txt. These two files are not to be changed or deleted under any circumstances. They are important files required for your 640H to display information correctly. If any of these files are deleted, you need to immediately rescan the database. Rescan can be found in; Settings/System/Content/Rescan.

4.4 Music transfer limit

When transferring music from a 640H to another device (PC, USB Hard Drive etc) or vice versa, the 640H does this at a maximum of 2000 tracks at a time. If you wish to transfer any content, you can do this by either, album, artist, playlist, tracks or genre.

To transfer music from your 640H to a PC/Mac, or vice versa, you first need to add the PC/Mac as a location on the 640H (see "Adding Content to your 640H from your PC/Mac" sections earlier). You then need to go to the music library and select what album, artist, playlist, tracks or genre you want to transfer. When you have done this, select the "Send to..." button and choose the destination. When you have done this, select "Start" and the transfer process will begin. When the transfer is complete, the message "Music sent successfully" will appear on the top left hand corner of the 640H screen.

If you want to transfer music from your 640H to a USB flash device/external hard disk drive or vice versa, you need to go to the music library and select what album, artist, playlist, tracks or genre you want to transfer. When you have done this, select the "Send to..." button and choose either the "Hard Disk Drive" (for the 640H) or "Portable Device" (for a USB device). When you have done this, select "Start" and the transfer process will begin. When the transfer is complete, the message "Music sent successfully" will appear on the top left hand corner of the 640H screen.

4.5 USB devices

The 640H also has the ability to access content situated on USB 2.0 flash "sticks" and USB 2.0 external hard drives.

Note: Only USB 2.0 certified products with the USB 2.0 logo on them and "Mass Storage Devices" are supported by the 640H. Please either consult the manufacturer of the USB 2.0 product to make sure it is properly certified, or go to www.usb.org for a list of approved products, before purchase. We cannot be held responsible for any incompatibility issues.

To access the USB device's content; plug it into one of the USB ports on the 640H. The 640H will then scan its contents and add it to the 640H database automatically.

4.6 NAS Drives

There is now a new kind of "external" hard drive called a NAS (Network Attached Storage) drive. Even though most NAS drives come with a USB 2.0 and Ethernet socket, they are not External Hard Drives. This means that plugging a NAS drive directly into a 640H via either the USB or Ethernet socket will not work.

If you wish to use a NAS drive then plug the NAS drive into a PC or Mac and share it over a network in the normal way (see "Setting up your PC/Mac to share music over a network" sections earlier on). Depending on your NAS drive, you may also need to install drivers on your PC/Mac and go through a specific set up procedure. Please read the instruction manual that came with your NAS drive for guidance.

Note: The NAS drive will need to be reformatted to the FAT32 file system (if it came preset as NTFS) for the 640H to access it.

4.7 Using a broadband modem connected to a PC as an Internet connection

If you have the unusual setup of a broadband modem connected to a PC directly and a 640H connected to the PC via the Ethernet port, but want the 640H to access the internet through the PC, you need to carry out the following:

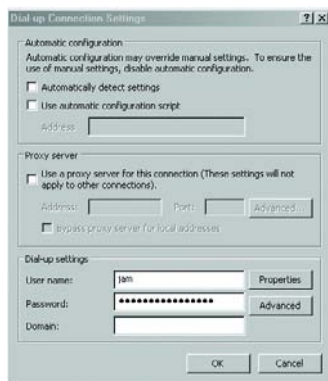
1. On your PC, open up Internet Explorer.
2. Select "Tools" at the top of the window and select "Internet Options":



3. Select the "Connections" tab.
4. Now select your modem connection and press the "Settings" button:



5. In the window that now appears, press the "Properties" button:

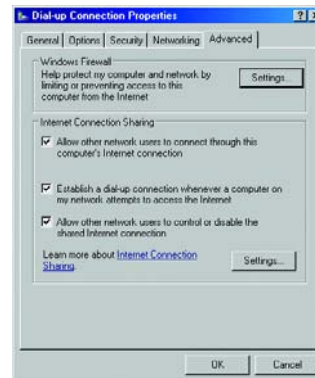


6. In the next window, select the "Advanced" tab:



7. Select the box labelled "Allow other network users to connect through this computers' Internet connection".

8. Keep the other two boxes ticked:

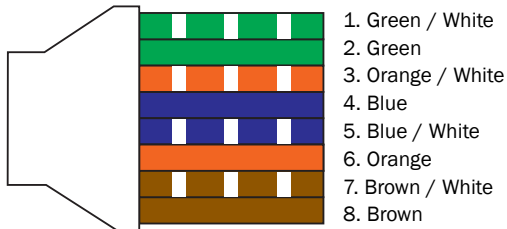


9. Close all the windows by clicking OK and then close Internet Explorer. The process is now complete.

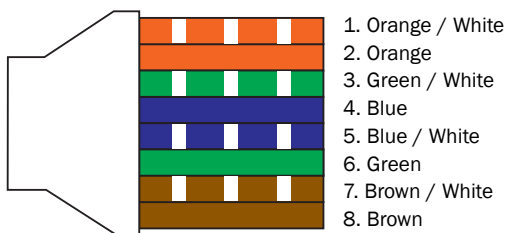
5. Lead descriptions

The below diagrams show the different types of Ethernet network cable that can be used to network the 640H. Please see "Making the Physical Connection" section of this document for more information.

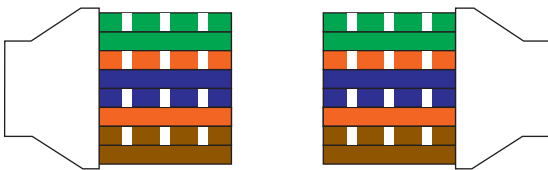
5.1 Cat5 568A RJ-45 cable jack



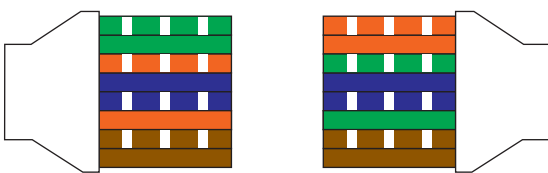
5.2 Cat5 568B RJ-45 cable jack



A straight-thru one-to-one (patch) cable has identical ends (568A-568A):

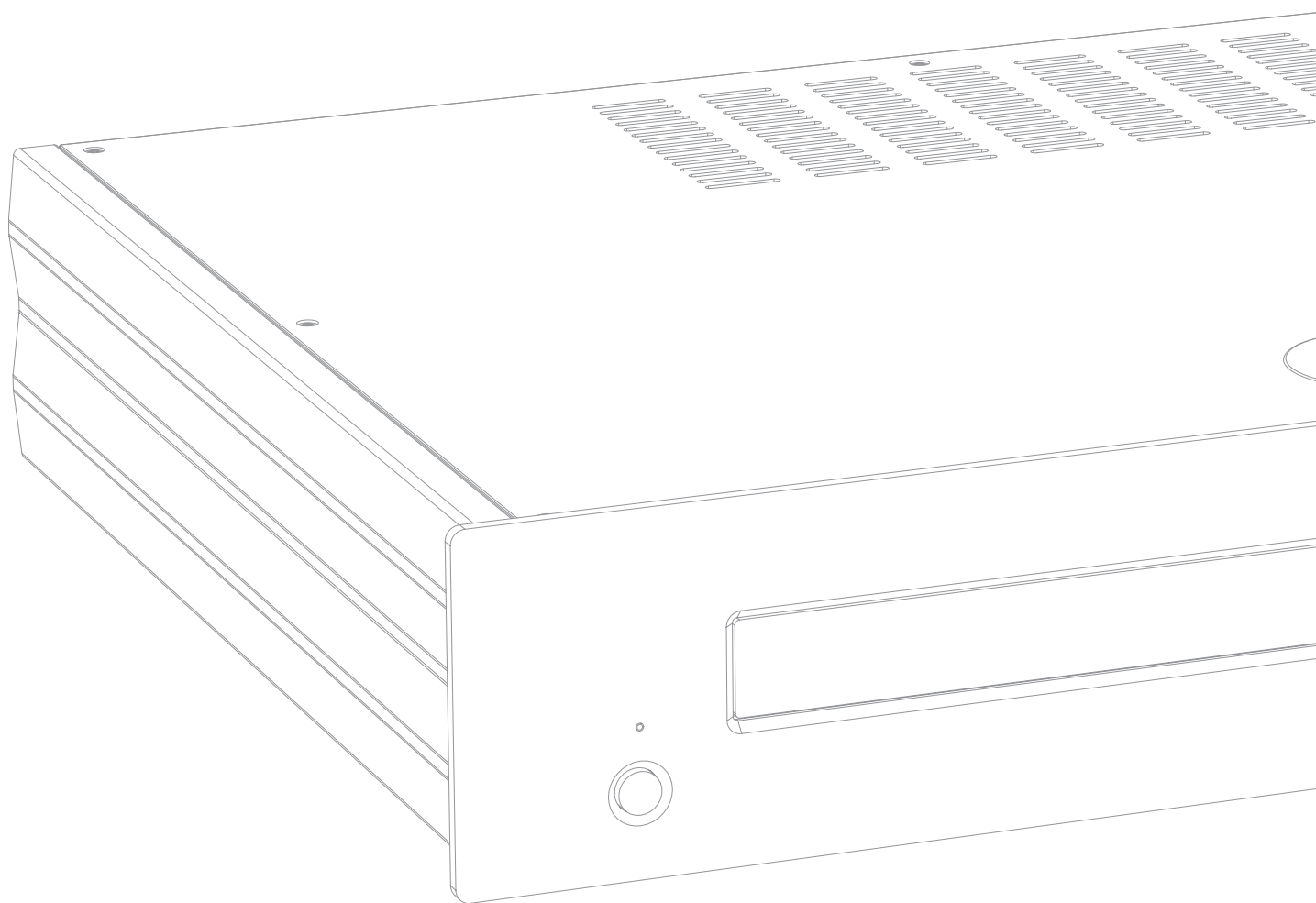


A crossover cable has different ends (568A-568B):



Cambridge Audio
Gallery Court
Hankey Place
London SE1 4BB
England

www.cambridge-audio.com



Free Manuals Download Website

<http://myh66.com>

<http://usermanuals.us>

<http://www.somanuals.com>

<http://www.4manuals.cc>

<http://www.manual-lib.com>

<http://www.404manual.com>

<http://www.luxmanual.com>

<http://aubethermostatmanual.com>

Golf course search by state

<http://golfingnear.com>

Email search by domain

<http://emailbydomain.com>

Auto manuals search

<http://auto.somanuals.com>

TV manuals search

<http://tv.somanuals.com>