

CURTIS



VR245
Digital Video Camera
Instruction Manual

Contents

Contents.....	1
Function Description:	2
Notice for use.....	2
System requirements.....	4
Start to use.....	5
1. Appearance and Buttons.....	5
2. Basic operation.....	7
Application of Attached ArcSoft VideoImpression.....	14
Introduction interface for software installation.....	14
Xvid codec Installation.....	15
MediaImpression Installation and Use.....	17
Product specifications.....	23
Standard accessories.....	24

Function Description

Welcome to purchase and use this digital video camera. Before use, please read this user manual carefully.

With this digital video camera, you can take video clips and still photo. With the playback function, you can playback the taken video with this digital video camera; in addition, you can download the video from the digital video camera into your PC. When prepared, this user manual refers to the latest information. The screens and illustrations etc in this user manual are to particularly and visually detail the operation of the digital video camera. Due to technology development and different production batches, the digital video camera herein may be different from that you buy and use.

Notice for use

General:

1. Never open the housing of the digital video camera; otherwise, some parts may cause electric shock.
2. Damp, pressure, collision and overheat may damage this digital video camera.

Memory and storage:

1. SD/MMC/SDHC can be used (but not included in the packing list and maximal capacity 16GB).
2. When buying SD/MMC/SDHC card, be sure to take the digital video camera with you so as to ensure compatibility.
3. When SD/MMC/SDHC card is inserted, the memory of the digital video camera will not function.
4. SD card has a write-protect switch, which can be used to prevent wrong deletion of data. When this switch is pushed to the bottom and locked, the data in the card will be protected. However, when the card is in write-protect state, it cannot be used for shooting or deletion etc.

5. These memory cards cannot be used for permanent storage of data. You must copy the documents in the digital video camera in the proper storage position.
6. When storing documents into the memory or the memory card, make sure that the size of the documents does not exceed the capacity of the memory.

Maintenance and care:

1. In use, always wear the wrist band so as to prevent slip.
2. Use proper protection sheath to avoid scratching the lens and screen.
3. To clean the lens, firstly blow away the dust on its surface, then use proper cloth or tissue for optical devices to clean the lens. If necessary, use lens cleanser. Never use organic cleanser to clean the digital video camera.
4. Never touch the lens with fingers.
5. When left idle for long, keep the digital video camera with the battery taken out in dry and dark place.

Other notices:

1. When switching video output between LCD display and video devices, be sure to exit from the play or record state.
2. This digital video camera is suitable the environment between 0°- 40° (32°-104°). Never keep the digital video camera in the place at extremely high temperature, such as in the car parking under the burning sun, or with much damp. In order to prevent the digital video camera from condensation, when moving from a cold place to a warm place, be sure to keep it in sealed plastic bag, and open the bag and take it out when the digital video camera reaches the indoor temperature.
3. TV programs, movies, music, images and other resources may be protected by copyright; therefore, without prior permission, the shooting/use of these resources may violate copyright laws and regulations related. Please note that the resources under the protection of copyright can be used within the permission of related laws and regulations.

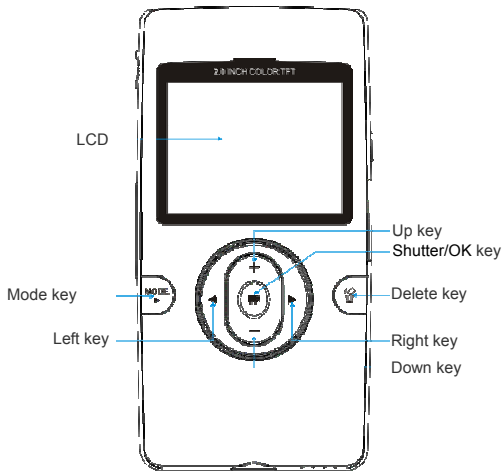
System requirements

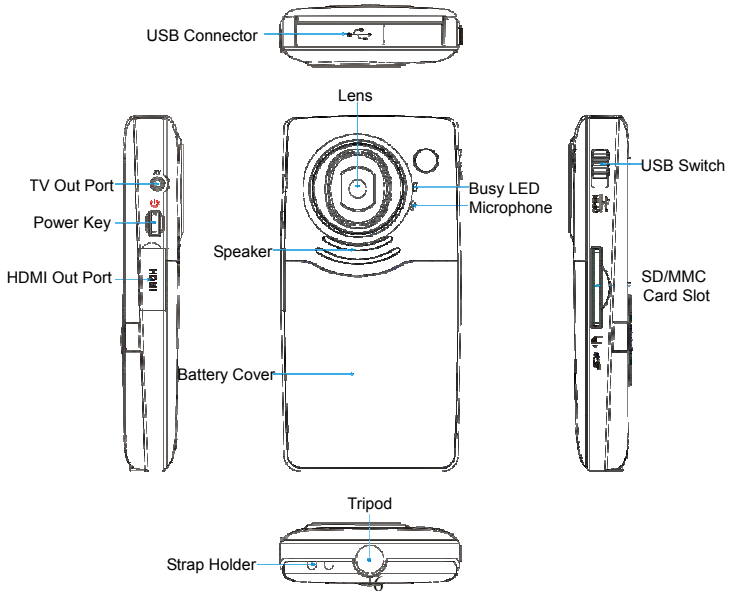
When operating and using this digital video camera, be sure to meet the requirements on the basic system for computer. It is strongly recommended to use the best computer units to operate the camera so as to bring its functions into full play. Below are the requirements on the basic system:

Operation System	Microsoft Windows 2000,XP, vista, Windows7
CPU	Above Intel PIII667 or CPU of equal performance
Memory	Above 128 MB
Sound card and display card	DirectX8 or above.
CD-ROM	4× speed or above
Hard Disk	1 GB space above useable
Other	One standard USB 1.1 or USB 2.0 port

Start to use

1. Appearance and Buttons

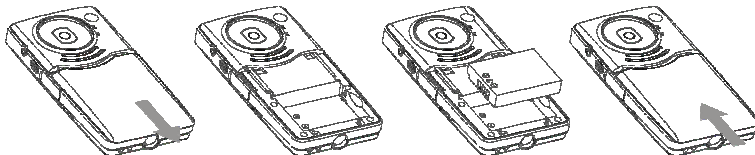




2. Basic operation

2.1 Install battery

Press / slide down the Battery Cover and insert lithium battery. Align with correct polarity of battery terminals. Close the Battery Cover.



2.2 Charge Battery

1. Power off the camera.

2. Connect the camera to the computer USB port or the power adapter (not include) with USB cable to charge the battery.

3. During charging, Busy light is on and will be off when the battery is fully charged.

2.3 Use SD/MMC/SDHC card

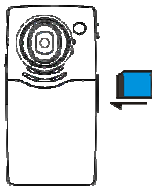
Insert the SD Memory card into the SD/MCC/SDHC Card Slot. Push it down until the card stays latched. Do not force – check card's position according to the position mark on the

camera.

Push and release inserted card if you wish to remove or replace the card.

Turn your camcorder OFF before inserting / removing the SD Card.

- Note that the SD Card has a tiny LOCK switch on the side. Set the switch to un-LOCK position to be able to store recorded videos, still pictures on inserted SD Memory Card.



2.4 Power on/off



In power-off state, press and hold the power key to power on the camera.



In power-on state, press the power key to power off the camera.

In power-on state, let the camera idle for 1 minute (default) to power off the camera automatically.


In power-on state, when battery level is very low, the camera will turn off after several seconds. You must replace the batteries.

2.5 Setup menu

In power-off state, **press and hold Shutter key**  **then press POWER key**  **turn on the camera, until enter set day and time mode, then press the Left/Right key to move the cursor,**

press the up key  or down key  to adjust the value. at this mode, you can view the Firmware version too.

2.6 Change mode

After power on, it will enter video record mode, press MODE key  to change mode between video record, Still photo record, Playback;

2.7 Video record

In Video record mode, press shutter key to start video recording, While recording, press the shutter key again to stop recording.

At preview mode, press Left or Right key can change the video size between HD(1280x720), D1(720x480), VGA(640x480); Press up key or down key can zoom in or zoom out the image.

2.8 Still photo record

In Still photo record mode, Press Shutter key can snap one photo,

At preview mode, press Left or Right key can change the video size between 3.1M(2048X1536), 1.3M(1280x960), VGA(640x480); Press up key or down key can zoom in or zoom out the image.

Note:

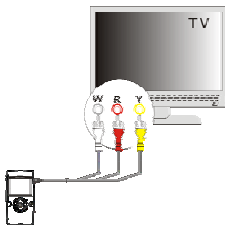
- While the memory is full or the SD card was locked, when you press the Shutter key, the camera will not recording.
- Before insert or remove the card, please turn off the camera first.

2.9 Playback videos or photos

Press mode key continuously to change playback mode, press ◀ key or ▶ key to select another file.

After you select one video file, Press OK key to begin play video, during playing video, press and hold ▶ or ◀ key to fast forward or backwards playing video, press OK key pause/resume playing, press the Delete key again to stop play video.

Press up key or down key can zoom in or zoom out the image; at zoom in mode, press OK key can enter pan mode, at this time you can press direction key to move the photo to view in LCD.



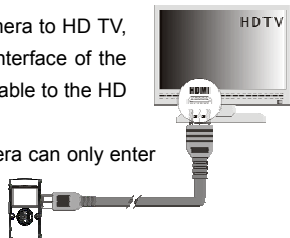
2.10 V output

After the camera is powered on, insert the terminal of the TV cable into the TV output port of the camera, the yellow port of the other terminal should be connected to VIDEO IN port of TV, red(or white) port of the other terminal should be connected to AUDIO IN port of TV.


2.11 HDMI output

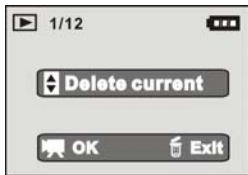
If you want to output the image and sound in video camera to HD TV, please insert the HDMI cable (Optional) to the HDMI interface of the video camera, connect the other terminal of the HDMI cable to the HD TV.

Note: During the period of HDMI output, the video camera can only enter playback mode.



3 Delete files

When in preview or playback mode. Press the Delete key  will enter Delete menu mode, use direction key of Up or Down to select "Delete current" or "Delete all" . Select "Delete current" then press OK key will delete current image; if select "Delete all" the press OK key will delete all images, if press Delete key will exit deletion.

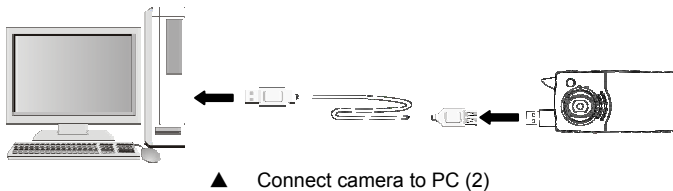
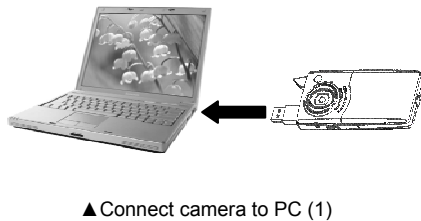
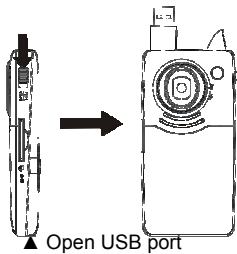


4 Connect to PC

1. Slide the USB Switch UP to extend the USB connector. And turn the camcorder ON.
2. Insert camcorder USB connector into computer's USB port, or use supplied USB extension cable to make connection.

5 Download files from camera to PC

1. After connecting to computer, go to "My Computer" and open the "Removable Disk." The videos will be saved in the \DCIM\ 100MEDIA folder in the removable disk. Choose the desired video in the 100MEDIA folder and copy (drag with mouse) it into the target folder in the HD of the computer.
2. You can use ArcSoft VideoImpression to edit videos.
3. ArcSoft VideoImpression can be installed from CD attached.



Application of Attached ArcSoft MediaImpression

There are two software in CD provided for image processing: Xvid codec, MediaImpression

Introduction interface for software installation

Put the CD attached into the CD-ROM of the computer, then the following menu will occur:



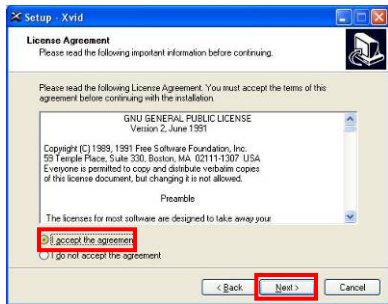
- If the CD driver does not automatically carry out or close such function, please click **autorun.exe**

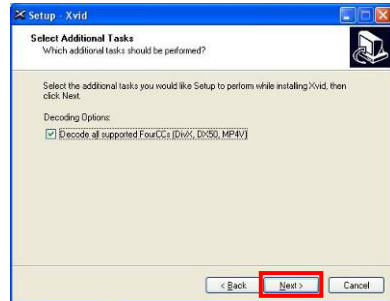
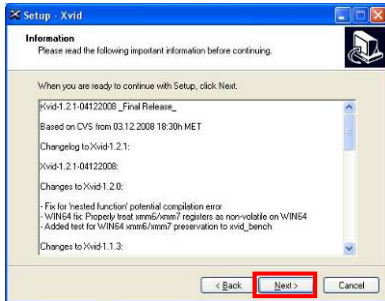
program under the root directory of the CD.

Xvid codec Installation

Instal Xvid codec:

Click " Install Xvid codec " button and complete the installation as per the tips.







Notice:

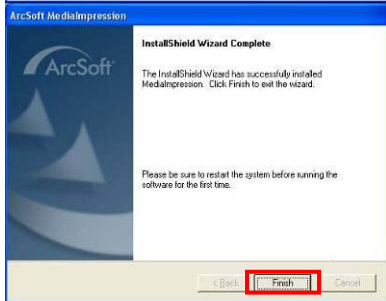
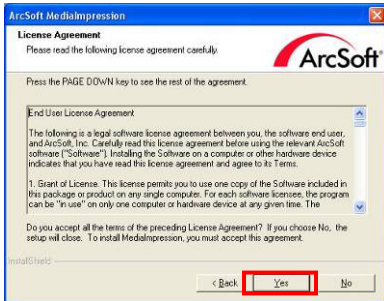
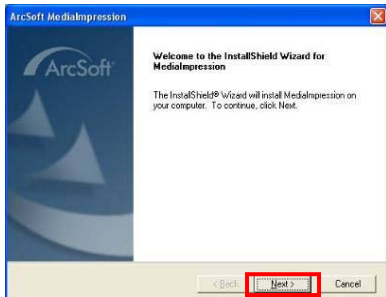
This software can be find in attached CD,

If you want to play recorded video on your computer, please install Xvid codec, if your computer have install Xvide codec, this operation may do not it.

MediaImpression Installation and Use:

Install Mediaimpression:

Click "Install MediaImpression" button and complete the installation as per the tips.



18

After installation, please restart the computer.

Run MediaImpression :

Double click the



icon on the desktop or follow "Start → Programs" to open:

MediaImpression



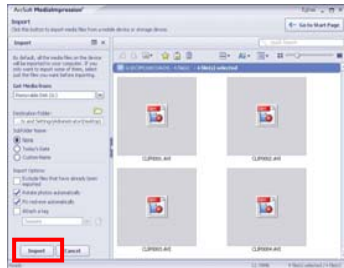
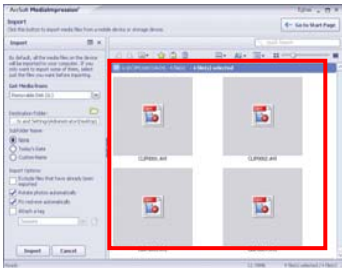
After starting MediaImpression, click the "Import" to import the media.



Choose the video camera storage and choose the output location.



Choose require file and click the import, selected file will be stored in the output location.



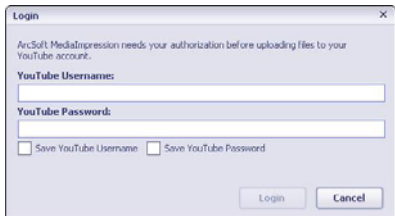
Click “Go to start page” to return the main screen, click the “Video” or “All media” to use the “You Tube” function.



Choose file and click the “upload to YouTube.”



Enter you username and password to login the You Tube, execute upload.



Product specifications:

Image sensor	1.3 Mega Pixels
Function mode	Record video, Record still photo, playback, mobile disk,
Lens	F2.8, f=3.1mm
Focus range	120cm~infinite
Digital focusing	4×
Shutter	Electronic
LCD display	2.0 inch TFT Display
Resolution	Video: HD(1280x720), D1(720x480), VGA(640x480) Still photo: 3.1M(2048X1536), 1.3M(1280x960), VGA(640x480)
White balance	Automatic
Exposure	Automatic
File format	AVI (Xvid)
Video out	TV out, HD TV out
Storage media	SD/MMC/SDHC card(max. 16GB)
USB port	USB2.0 port
Dimension (LxWxH)	110mm × 57mm × 19.5mm

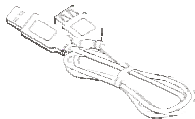
Standard accessories:



Installation CD



User manual



USB extension cable



TV cable



Hand Strap



Carrying Pouch

Free Manuals Download Website

<http://myh66.com>

<http://usermanuals.us>

<http://www.somanuals.com>

<http://www.4manuals.cc>

<http://www.manual-lib.com>

<http://www.404manual.com>

<http://www.luxmanual.com>

<http://aubethermostatmanual.com>

Golf course search by state

<http://golfingnear.com>

Email search by domain

<http://emailbydomain.com>

Auto manuals search

<http://auto.somanuals.com>

TV manuals search

<http://tv.somanuals.com>