

# Dell™ Wireless Dock

## User Manual

**Model Name: E16WD01**  
**Model Type: E16WD01001**

# Notes, Cautions, and Warnings



**NOTE:** A NOTE indicates important information that helps you make better use of your computer.



**CAUTION:** A CAUTION indicates potential damage to hardware or loss of data if instructions are not followed.



**WARNING:** A WARNING indicates a potential for property damage, personal injury, or death.

---

**Information in this document is subject to change without notice.**

**© 2009 Dell Inc. All rights reserved.**

Reproduction of these materials in any manner whatsoever without the written permission of Dell Inc. is strictly forbidden.

Trademarks used in this text: *Dell* and the *DELL* logo are trademarks of Dell Inc.; *Microsoft*, *Windows*, *Windows Vista*, and *Aero* are either trademarks or registered trademarks of Microsoft Corporation in the United States and/or other countries; *Wi-Fi* is a registered trademark of the Wi-Fi Alliance.

Other trademarks and trade names may be used in this document to refer to either the entities claiming the marks and names or their products. Dell Inc. disclaims any proprietary interest in trademarks and trade names other than its own.

Model E16WD01

September 2009

P/N 0HPCH

Rev. A00


# Contents

|   |                                                                          |    |
|---|--------------------------------------------------------------------------|----|
| 1 | About Your Dell Wireless Dock . . . . .                                  | 5  |
|   | <b>Front and Back View.</b> . . . . .                                    | 6  |
| 2 | Configuring Your Dell Wireless Dock . . . . .                            | 7  |
|   | <b>Installing the Software</b> . . . . .                                 | 7  |
|   | <b>Turning Your Dell Wireless Dock On</b> . . . . .                      | 16 |
|   | <b>Associating Your Dell Wireless Dock.</b> . . . . .                    | 16 |
|   | Associating Your Dell Wireless Dock<br>Using Cable Association . . . . . | 17 |
|   | Associating Your Dell Wireless Dock<br>Using PIN Association . . . . .   | 19 |
|   | <b>Setting Up Your Dell Wireless Dock</b> . . . . .                      | 21 |
| 3 | Using the Dell Wireless<br>USB Manager . . . . .                         | 25 |
|   | Connection Manager . . . . .                                             | 25 |
|   | UWB Radio and Host Settings . . . . .                                    | 26 |
| 4 | Resetting the Dell Wireless Dock . . . . .                               | 29 |

|   |                                                                                                        |    |
|---|--------------------------------------------------------------------------------------------------------|----|
| 5 | Troubleshooting . . . . .                                                                              | 31 |
|   | <b>General</b> . . . . .                                                                               | 31 |
|   | <b>Video Output</b> . . . . .                                                                          | 32 |
|   | <b>Audio Output</b> . . . . .                                                                          | 33 |
| 6 | Specifications . . . . .                                                                               | 35 |
| 7 | General Safety Information . . . . .                                                                   | 37 |
|   | <b>General Power Safety</b> . . . . .                                                                  | 38 |
|   | <b>Earphone and Headphone Safety</b> . . . . .                                                         | 39 |
|   | <b>Ergonomic Instructions</b> . . . . .                                                                | 39 |
|   | <b>Environmental Information</b> . . . . .                                                             | 39 |
|   | Recycling Information . . . . .                                                                        | 39 |
|   | Waste Electrical and Electronic<br>Equipment (WEEE) Directive . . . . .                                | 39 |
|   | Registration, Evaluation, and Authorization<br>of Chemicals (REACH) . . . . .                          | 40 |
|   | <b>Finding Additional Information</b> . . . . .                                                        | 40 |
|   | <b>Export Regulations</b> . . . . .                                                                    | 40 |
|   | <b>Additional Country-Specific Safety, Regulatory,<br/>    and Environmental Information</b> . . . . . | 41 |
|   | Korea (Korean) . . . . .                                                                               | 41 |
|   | China (S. Chinese). . . . .                                                                            | 41 |


# About Your Dell Wireless Dock


The Dell™ Wireless Dock enables you to connect USB peripherals such as external storages, printers, keyboards, mice, etc. to your notebook through the wireless USB technology. You can also extend your notebook's audio and video support by connecting an external display and speakers.

 **NOTE:** The Dell Wireless Dock supports a screen resolution of up to 1680x1050 (wide screen) or 1600x1200 (standard screen) through a DVI-I connector. If you need to connect a VGA display, you must use a DVI to VGA adapter.

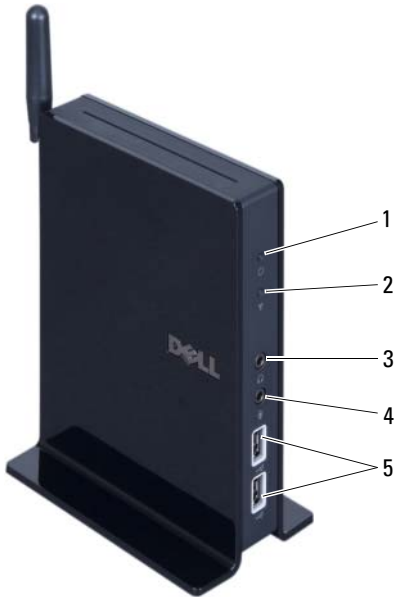
Wireless USB technology performs best within a one-meter range; generally within a single room environment. The technology is different from Wi-Fi® technology and is not discoverable by any Wi-Fi device.

You can associate up to sixteen different notebooks with the Dell Wireless Dock. However, you can connect the Dell Wireless Dock to only one of the associated hosts at a given time.

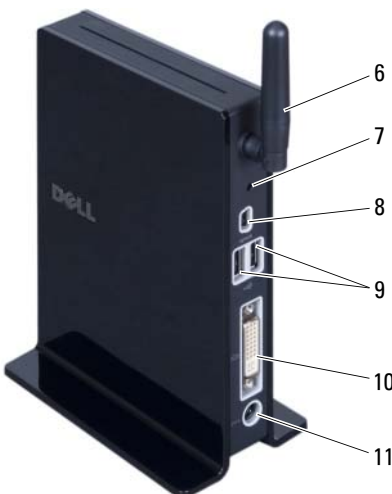
 **NOTE:** When the seventeenth host is associated, the first associated host will no longer be associated with the Dell Wireless Dock.

 **NOTE:** The Dell Wireless Dock provides integrity checking along with AES-128/CCM encryption.

# Front and Back View



- 1 power light
- 2 wireless link and activity light
- 3 line out (speaker)
- 4 line in (microphone)
- 5 USB connectors (2)
- 6 antenna
- 7 reset button
- 8 mini-USB connector for cable association
- 9 USB connectors (2)
- 10 DVI-I connector
- 11 DC-IN connector



# Configuring Your Dell Wireless Dock

## Installing the Software

The *Drivers and Utilities* media that ships with your Dell™ Wireless Dock contains the software required for installing and associating your Dell Wireless Dock.

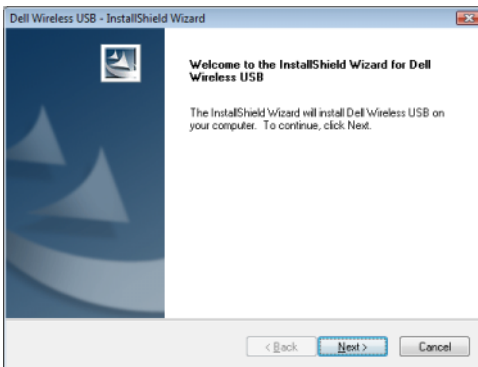


**NOTE:** You must install the software and drivers before you begin to use your Dell Wireless Dock.

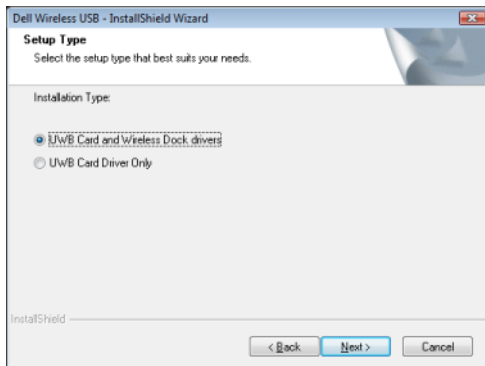


**NOTE:** Ensure your notebook's video card drivers are installed before continuing with the installation.

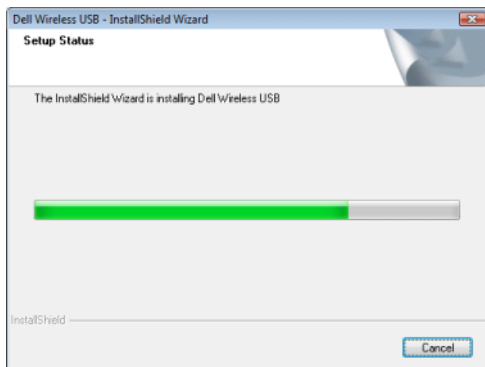
- 1 Insert the *Drivers and Utilities* media for Dell Wireless Dock into your notebook's CD/DVD drive. The installation wizard appears.
- 2 Click **Next** to continue.



- 3 Select **UWB Card and Wireless Dock drivers** and click **Next** to continue.

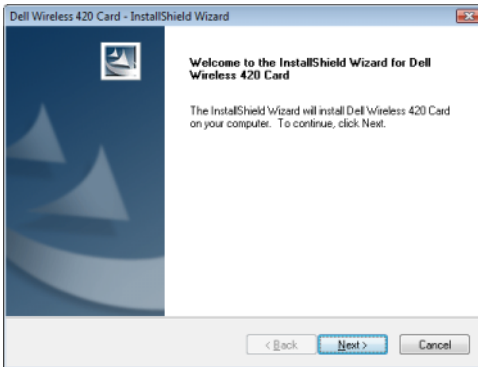


- 4 The Dell Wireless USB card installation begins. This may take several minutes.

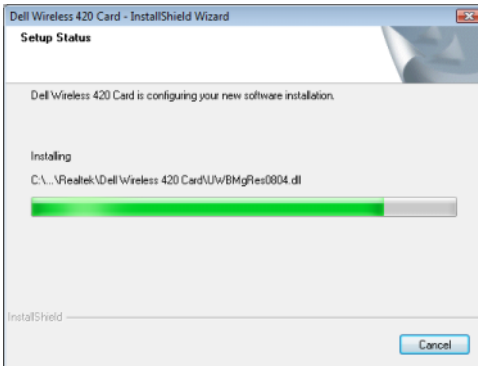




- 5 Click Next to install the Dell Wireless USB card.



- 6 The Dell Wireless USB card installation continues. This may take several minutes.

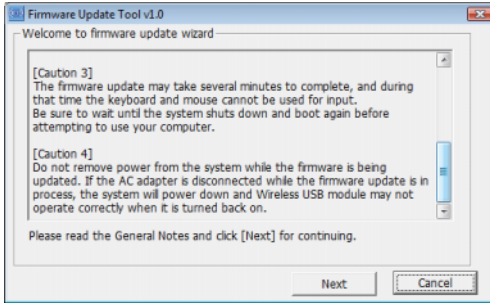


7 The Dell Wireless USB card firmware update wizard appears.

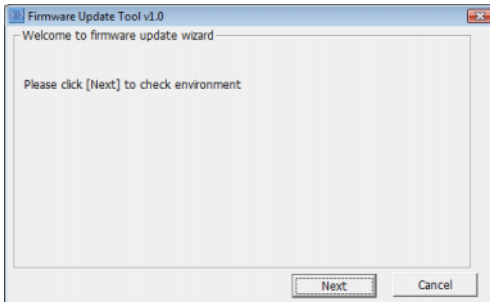


**NOTE:** The installer will skip this step if your firmware is already up to date.

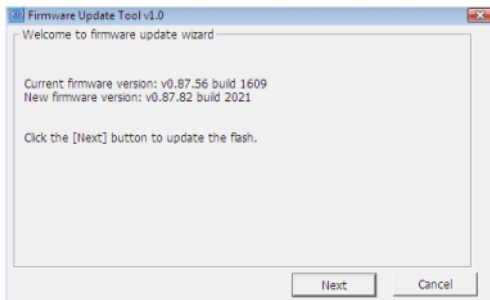
a Scroll and read the **General Notes** section and then click **Next**.



b Click **Next** to continue.

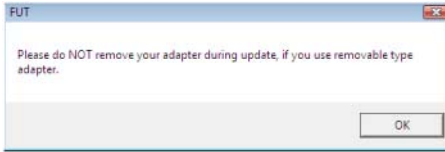


c Click **Next** to update the Wireless USB card firmware.

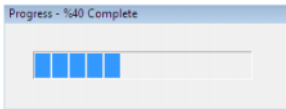


**CAUTION:** Do not disconnect your AC adapter during the firmware update.

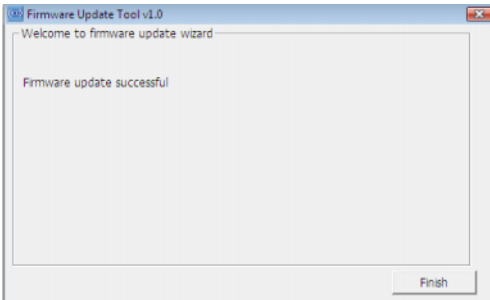
- d Click **OK**.



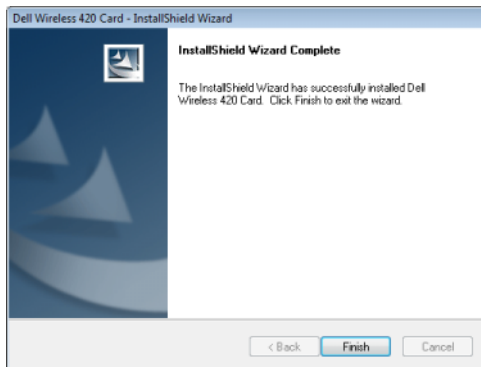
- e The firmware update for the Wireless USB card begins. This may take several minutes.



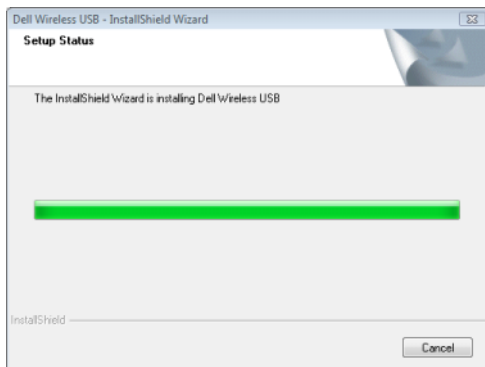
- f Click **Finish** to close the firmware update wizard.



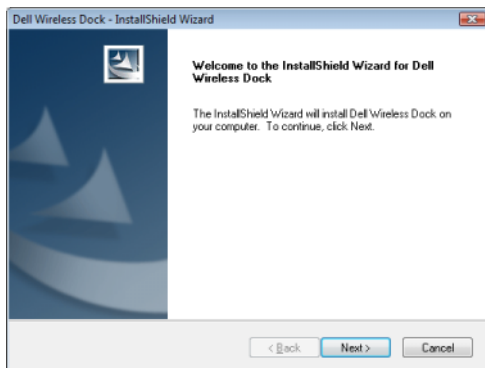
- 8 Click **Finish** to continue.



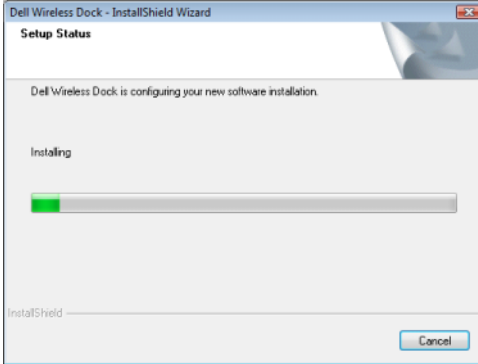
9 The Dell Wireless USB installation continues. This may take several minutes.




10 Click **Next** to install the Dell Wireless Dock software.



- 11** The Dell Wireless Dock installation begins. This may take several minutes.



 **NOTE:** Your notebook's display may flicker or go blank for a few seconds during the installation of the Dell Wireless Dock device drivers.

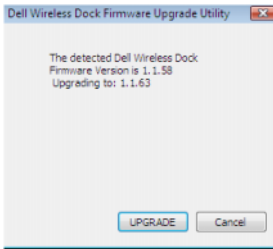
- 12** The Dell Wireless Dock Firmware Upgrade Utility appears.
- a** Connect the AC adapter to the Dell Wireless Dock and the notebook. Then connect the USB cable, shipped with the Dell Wireless Dock, from the mini-USB connector of the Dell Wireless Dock to the USB connector of the notebook.



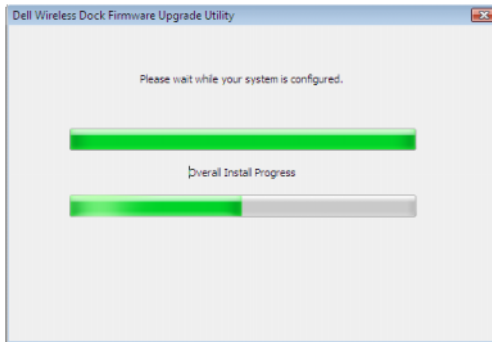
- b** If you have the latest Dell Wireless Dock firmware, click **Finish**.



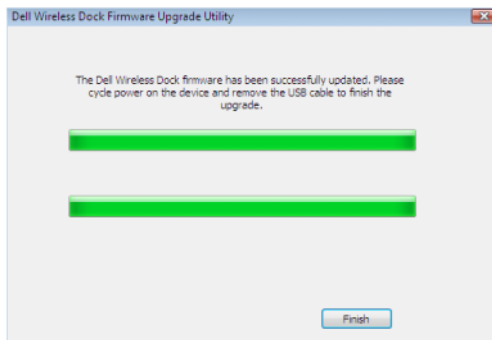
- c If you do not have the latest Dell Wireless Dock firmware, click **Upgrade**.



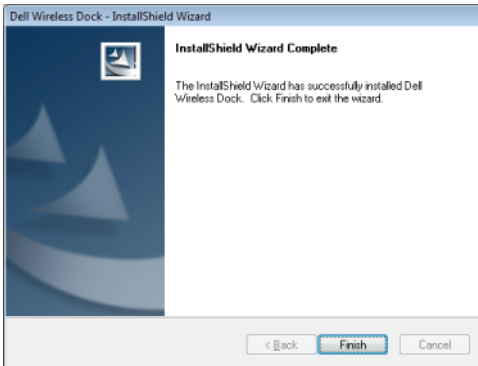
- i The firmware update begins.



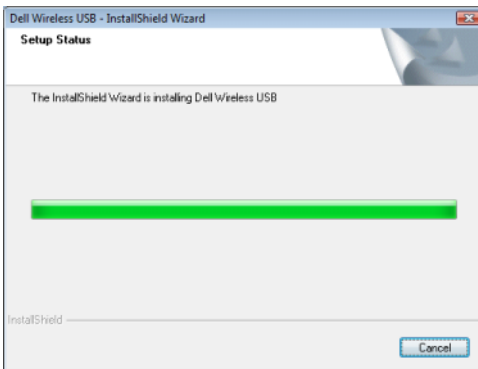
- ii Click **Finish**. Disconnect the AC adapter and the USB cable connecting the Dell Wireless Dock to the notebook.



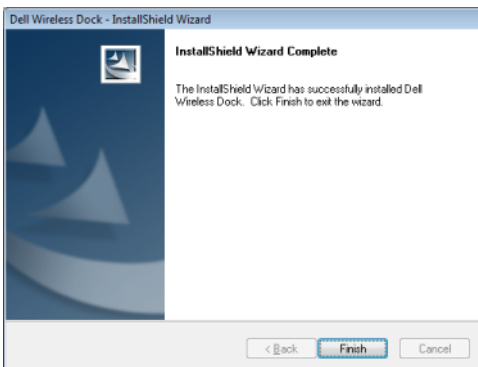
**13** Click **Finish** to continue.




**14** The Dell Wireless Dock installation continues. This may take several minutes.



**15** Click **Finish**.



## Turning Your Dell Wireless Dock On

 **WARNING:** Use only the AC adapter shipped with your Dell Wireless Dock to avoid damage to the docking station.

Connect the AC adapter to the DC-IN connector on the Dell Wireless Dock and an electrical outlet. The power light on the Dell Wireless Dock turns on.



## Associating Your Dell Wireless Dock

You can associate your Dell Wireless Dock with your notebook using one of the following methods:


- **Cable association** — Completes the association process using a one-time cable connection to the Dell Wireless Dock.
- **PIN association** — Completes the association process wirelessly by entering the PIN code found on the label located on the bottom of the Dell Wireless Dock.

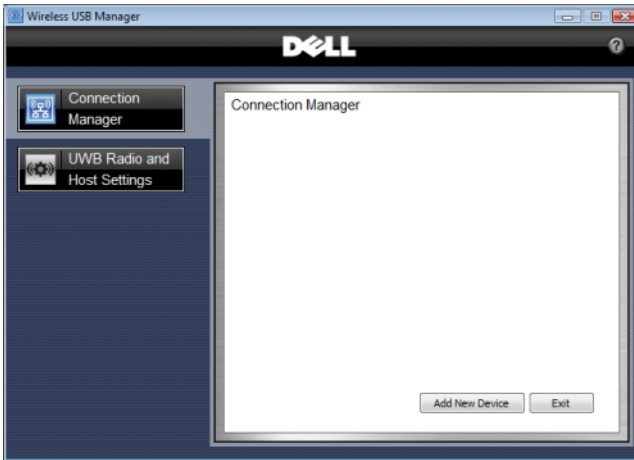


**NOTE:** Ensure that your notebook has a wireless USB card installed (includes hardware and software) and that the card is enabled.



## Associating Your Dell Wireless Dock Using Cable Association

- 1 Double-click the Wireless USB Manager icon  located on the taskbar. The Dell Wireless USB Manager window appears.



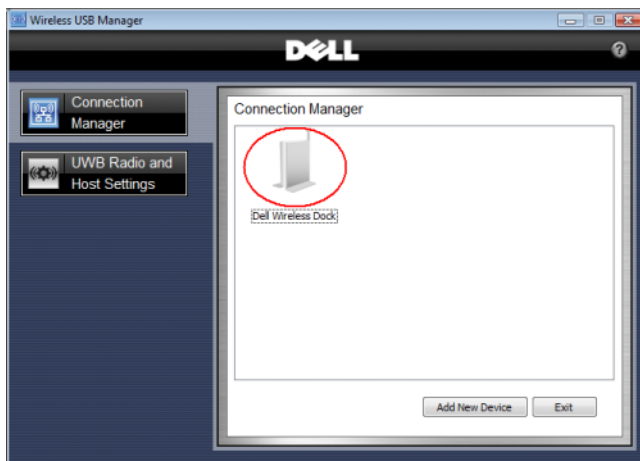
- 2 Turn on your Dell Wireless Dock.



**NOTE:** The Dell Wireless Dock does not have a power button. You must connect or disconnect the power cable to turn on or turn off the device.

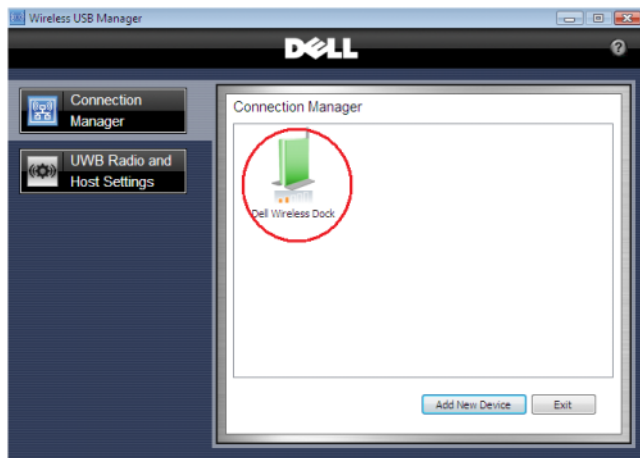
- 3 Connect one end of the USB cable, shipped with the Dell Wireless Dock, to the mini-USB connector on the Dell Wireless Dock and then connect the other end of the USB cable to any of the USB connectors of the notebook.

The association process begins and the Dell Wireless Dock icon appears in the **Connection Manager** window.



- 4 Disconnect the USB cable connecting your notebook to the Dell Wireless Dock.

The Dell Wireless Dock icon turns green indicating a successful wireless connection has been established. The icon remains gray if the connection is not established.




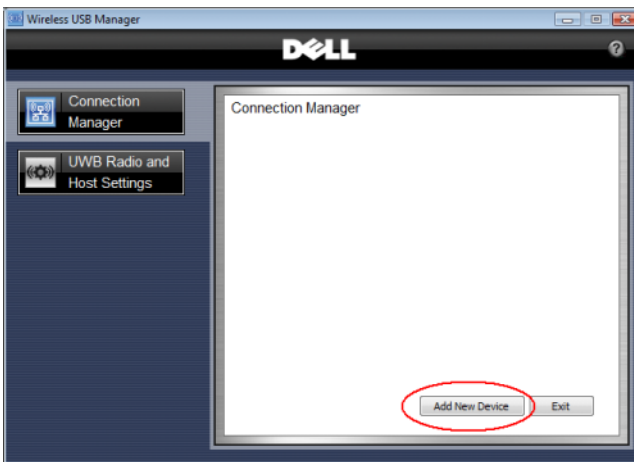
## Associating Your Dell Wireless Dock Using PIN Association

- 1 Turn on your Dell Wireless Dock.



**NOTE:** The Dell Wireless Dock does not have a power button. You must connect or disconnect the power cable to turn on or turn off the device.

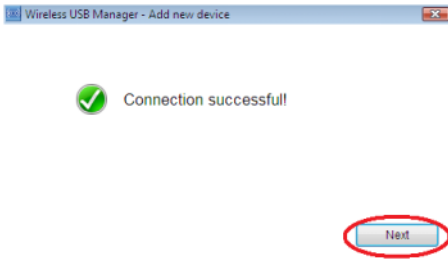
- 2 Double-click the Wireless USB Manager icon  located on the taskbar. The Dell Wireless USB Manager window appears.
- 3 On the Wireless USB Manager screen, click **Add New Device**. The notebook scans for wireless devices.



- 4 The **Add new device** window appears. Enter the PIN code found on the label located on the bottom of your Dell Wireless Dock then click the **Connect** button.



A **Connection successful!** message appears. Click **Next**.



If the PIN code is incorrect, a **PIN association failed** message appears. Click **OK** and repeat step 3 to step 6 to try again.

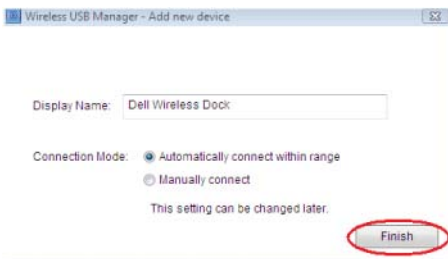
If the notebook does not detect your Dell Wireless Dock, a **No wireless devices found** message appears. Move your notebook closer to the Dell Wireless Dock and repeat step 3 to step 6 to try again.

**5** Type the **Display Name** and select **Connection Mode**.

Select **Automatically connect within range** to connect the Dell Wireless Dock automatically when your notebook is within range. Select **Manual connect** to manually connect to the Dell Wireless Dock.

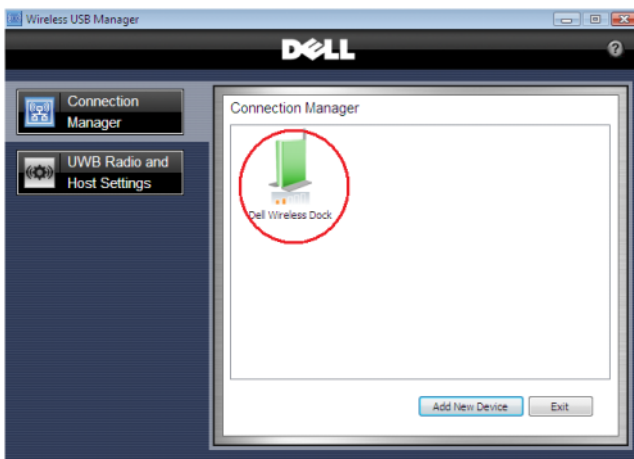


**NOTE:** You can modify the Connection mode and Display Name in the **Connection Manager** after setup completes.




## 6 Click Finish.


The Dell Wireless Docking icon turns green indicating that a successful wireless connection has been established.



## Setting Up Your Dell Wireless Dock

 **NOTE:** You can connect devices to the Dell Wireless Dock while your notebook is turned on.

### Adjusting Your Display Settings (If a Monitor is Connected)

- 1 Right-click the Wireless USB Display icon  located on the taskbar.
- 2 Select the display mode:
  - **Extend mode** — Provides additional screen space for you to use.
  - **Mirror** — Duplicates the notebook screen on the monitor (default mode).
  - **Set as Main Monitor** — Disables the notebook monitor and moves the display to the external monitor.
  - **Off** — Disables the external monitor.

- 3 Select the desired screen resolution.
- 4 Set other display options:
  - **Updates** — Checks for available software updates for the Wireless USB display.
  - **Color Quality** — Choose between Medium (16-bit) and Highest (32-bit).
  - **Screen Rotation** — Rotates the monitor left, right, or upside-down.
  - **Extend to** — Extends your monitor to the left, right, above, or below when in Extend mode.
  - **Advanced** — Opens your notebook operating system's display properties settings window.

### Adjusting the Antenna Position

It is recommended that you keep the antenna in the upright position for best video performance.



### Positioning the Dell Wireless Dock

It is recommended that you place the Dell Wireless Dock next to a monitor, as shown in Figure (a). Do not place the Dell Wireless Dock behind a monitor or any other object, as shown in Figure (b).

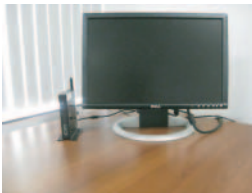



Figure (a)



Figure (b)

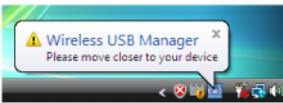
When the wireless link between the notebook and the Dell Wireless Dock becomes weak, move the notebook closer to the Dell Wireless Dock or rotate the notebook to find a position with a stronger wireless link. For example, if you find that the wireless signal strength is reduced when the notebook lid is closed, you can try to rotate the notebook to find the best reception.

 **NOTE:** The wireless connection works best if there is a clear line-of sight between your notebook and the Dell Wireless Dock.

### Moving an Associated Notebook

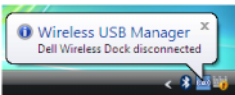
You can move an associated notebook anywhere within a range of one meter from the Dell Wireless Dock.

When the notebook is wirelessly connected and is moved away from the Dell Wireless Dock, you may see the following message appear in the taskbar.

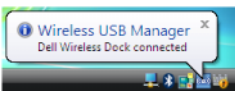


This indicates that the range between the Dell Wireless Dock and the notebook is near the maximum allowable distance for maintaining a connection.

If you intend to continue using the Dell Wireless Dock, you must move your notebook closer to the Dell Wireless Dock. Otherwise, the wireless connection drops and the following message appears:



To reconnect, move the notebook closer to the Wireless Docking. If you chose **Automatically connect within range** during setup, the wireless connection automatically re-establishes. Otherwise, you must manually establish the connection again.



### **Working With Your Notebook Lid Closed**

The wireless connection between your notebook (with the lid closed) and the Dell Wireless Dock depends on your notebook's power settings.

If the power option is set to Hibernate or Standby, then the wireless connection will disconnect.

If the power option is set to **Do Nothing**, the notebook will retain the wireless connection even when the lid is closed.



**NOTE:** When the lid is closed, the performance and maximum range may reduce. If you need to use the Dell Wireless Dock for high performance or long range applications, it is recommended to use the notebook with the lid open.



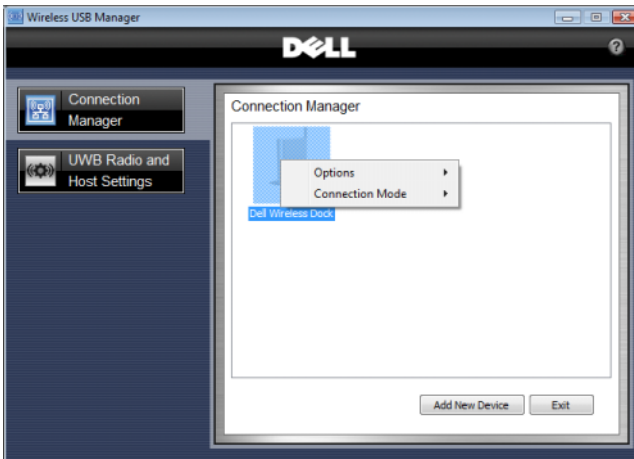
# Using the Dell Wireless USB Manager

The Dell™ Wireless USB Manager interface allows you to monitor the connection status of the Dell Wireless Dock. It also allows you to change settings on your notebook and the Dell Wireless Dock, as well as other devices that have been associated to your notebook.

## Connection Manager

The **Connection Manager** section allows you to:

- Observe the connection status of the Dell Wireless Dock
- Modify the connected device name
- Change the connection mode
- Disconnect the device
- Delete the device



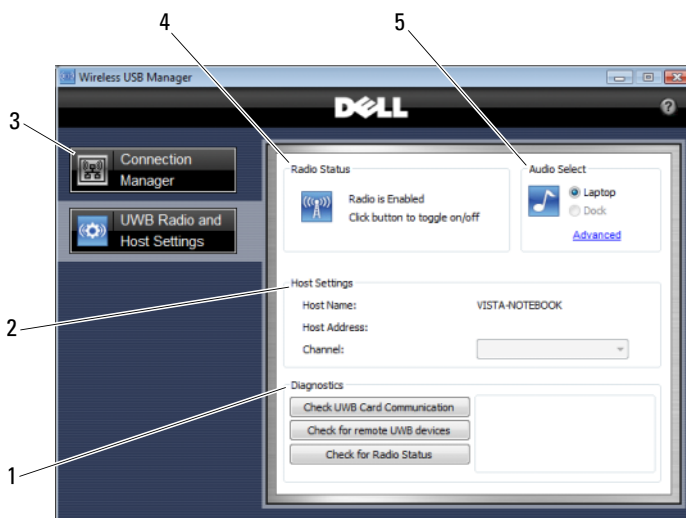
| <b>To</b>                   | <b>Do</b>                                                                                                                                                                                                                                                                                                                                  |
|-----------------------------|--------------------------------------------------------------------------------------------------------------------------------------------------------------------------------------------------------------------------------------------------------------------------------------------------------------------------------------------|
| Rename                      | Click the device icon, expand the <b>Options</b> menu and select <b>Rename</b> . This allows you to change the name that is displayed under the device icon.                                                                                                                                                                               |
| Delete                      | Click the device icon, expand the <b>Options</b> menu and select <b>Delete</b> . The device associated will be deleted and you will no longer be able to connect the device to the notebook unless you re-associate the device with the notebook.                                                                                          |
| Disconnect                  | Click the device icon, expand the <b>Options</b> menu and select <b>Disconnect</b> . The device will disconnect from the notebook and the connection mode will automatically change to <b>Manual</b> . To re-establish a connection to the device, you must click the device icon and select <b>Connect</b> under the <b>Options</b> menu. |
| Connect                     | This will only be enabled under the <b>Options</b> menu if the Dell Wireless Dock is in the manual connection mode. Select <b>Connect</b> to manually connect the device to the notebook.<br><br><b>NOTE:</b> Both notebook and the Dell Wireless Dock must be turned on to establish the connection.                                      |
| Connection Mode - Automatic | Select this if you want the Dell Wireless Dock to connect automatically to the notebook any time both the notebook and the Dell Wireless Dock are turned on and within range of each other.                                                                                                                                                |
| Connection Mode - Manual    | Select this if you do not want the Dell Wireless Dock to connect automatically. To connect your Dell Wireless Dock to the notebook in this mode, you must click the Dell Wireless Dock icon and select <b>Connect</b> under the <b>Options</b> menu.                                                                                       |

## **UWB Radio and Host Settings**

The UWB Radio and Host Settings section allows you to:

- Enable or disable the Wireless USB radio.
- Select audio output

- Change wireless USB channels
- Run diagnostics




- 1 **Diagnostics** section allows you to run device diagnostics.  
Click **Check UWB Card Communication** button to check if your notebook is working properly.  
Click **Check for remote UWB devices** button to check for other Wireless USB Devices.  
Click **Check for Radio Status** button to see what channel is running at the moment.
- 2 **Host Settings** section displays the **Host Name** and **Host Address** (Media Access Control address), and allows you to change channels. For optimized performance, it is recommended to set the channel to **Auto**.
- 3 Move your mouse cursor on this area to change channel, select audio output, turn radio on/off and run diagnostics.
- 4 **Radio Status** allows you to enable or disable the Wireless USB radio.
- 5 **Audio Select** allows you to send audio output to your notebook or to external speakers connected to your Dell Wireless Dock.



## Resetting the Dell Wireless Dock

To delete all associations stored on your Dell™ Wireless Dock, press and hold down the reset button for 10 seconds. All notebook-to-dock associations will be lost and you will have to re-establish a connection.

To re-establish a connection to a notebook, you must repeat the association process. For more information, see the "Associating Your Dell Wireless Dock" on page 16.

 **NOTE:** The previously associated device entries will remain in the **Connection Manager** on your notebook, but will be grayed out. Delete these device entries to avoid confusion.






# Troubleshooting

## General

| Problem                                                                                  | Possible Solution                                                                                                                                                                                                                                                                                                                                                                                                                                                                                                                                                                                                                                                                                                                                                                                                                                                                                                                                                                                                                                                                                                                                                                                                                                                                                                                 |
|------------------------------------------------------------------------------------------|-----------------------------------------------------------------------------------------------------------------------------------------------------------------------------------------------------------------------------------------------------------------------------------------------------------------------------------------------------------------------------------------------------------------------------------------------------------------------------------------------------------------------------------------------------------------------------------------------------------------------------------------------------------------------------------------------------------------------------------------------------------------------------------------------------------------------------------------------------------------------------------------------------------------------------------------------------------------------------------------------------------------------------------------------------------------------------------------------------------------------------------------------------------------------------------------------------------------------------------------------------------------------------------------------------------------------------------|
| <p>The Dell™ Wireless Dock power light is Off.</p>                                       | <ul style="list-style-type: none"> <li>• Ensure that the AC adapter shipped with the Dell Wireless Dock is connected to the docking station and to a working electrical outlet.</li> <li>• Disable and enable the Dell Wireless Dock in Microsoft® Windows® device manager.</li> </ul>                                                                                                                                                                                                                                                                                                                                                                                                                                                                                                                                                                                                                                                                                                                                                                                                                                                                                                                                                                                                                                            |
| <p>My notebook will not connect to the Dell Wireless Dock and the power light is on.</p> | <div data-bbox="431 657 812 896" data-label="Image"> <p>The screenshot shows the Windows Device Manager window. The 'Dell Wireless Dock' device is selected under 'Universal Serial Bus controllers'. A context menu is open over the device, showing options: 'Update Driver Software...', 'Disable', 'Uninstall', 'Scan for hardware changes', and 'Properties'.</p> </div> <ul style="list-style-type: none"> <li>• Ensure that the notebook is within six meters of the Dell Wireless Dock and there are no objects obstructing the line of sight between them.</li> <li>• Ensure that the wireless USB radio is on by checking the wireless USB manager's <b>UWB Radio and Host Settings</b> window.</li> <li>• Ensure that the Dell Wireless Dock has an icon in the <b>Connection Manager</b>.</li> <li>• If there is a device icon in the <b>Connection Manager</b> for your Dell Wireless Dock, click on the icon and select <b>Connect</b> under the <b>Options</b> menu or select <b>Automatically connect within range</b> under <b>Connection Mode</b>.</li> <li>• If you continue to have connection problems, press and hold the reset button for 10 seconds to reset the Dell Wireless Dock to the original factory settings. This deletes all associations. You must associate all the devices again.</li> </ul> |

# Video Output

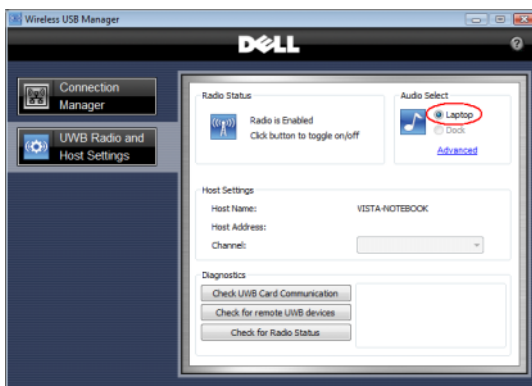
| Problem                                                                                   | Possible Solution                                                                                                                                                                                                                                                                                                                                                                                                                                                                                                                                                                                                                                                                                                                                                                                                                                                                                                                   |
|-------------------------------------------------------------------------------------------|-------------------------------------------------------------------------------------------------------------------------------------------------------------------------------------------------------------------------------------------------------------------------------------------------------------------------------------------------------------------------------------------------------------------------------------------------------------------------------------------------------------------------------------------------------------------------------------------------------------------------------------------------------------------------------------------------------------------------------------------------------------------------------------------------------------------------------------------------------------------------------------------------------------------------------------|
| The monitor is blank.                                                                     | <ul style="list-style-type: none"><li>• Ensure that the notebook connected to the Dell Wireless Dock is functioning properly and is not in <b>Standby</b> or <b>Hibernate</b> mode. When the notebook is in <b>Standby</b> and <b>Hibernate</b> mode, the display is always blank.</li><li>• Ensure that the AC adapter is connected to the Dell Wireless Dock and to a working electrical outlet.</li><li>• Ensure that the video cable is securely connected to the DVI connector and is secured with the fixing screws on both sides.</li><li>• Ensure that the drivers and utilities for Dell Wireless Dock software are installed. The Wireless USB display icon  for the docking station should be visible in the taskbar.</li><li>• If the problem persists, disconnect and reconnect the AC adapter from the Dell Wireless Dock.</li></ul> |
| My monitor is not correctly displaying videos and images from my Windows Vista® notebook. | <p>To correctly display video and images in Windows Vista, you must set the notebook to Windows Aero® mode.</p> <p>To enable Aero:</p> <ol style="list-style-type: none"><li><b>1</b> Right-click the desktop background and select <b>Personalize</b> to open the <b>Personalize appearance and sounds</b> window.</li><li><b>2</b> Click <b>Window Color and Appearance</b>.</li><li><b>3</b> Select <b>Windows Aero</b> from the <b>Color Scheme</b> list and click <b>OK</b>.</li></ol>                                                                                                                                                                                                                                                                                                                                                                                                                                         |
| The video playback on my external monitor is choppy or is dropping frames.                | <p>To improve video playback performance, ensure that:</p> <ul style="list-style-type: none"><li>• The notebook is within the maximum operating range of the Dell Wireless Dock.</li><li>• The notebook has a clear line-of-sight to the Dell Wireless Dock.</li><li>• The window size of the video being played is smaller than 50% of the external monitor's viewable area.</li></ul>                                                                                                                                                                                                                                                                                                                                                                                                                                                                                                                                             |



| <b>Problem</b>                                                                       | <b>Possible Solution</b>                                                                                                                                                                                                                                                                                                                                                                                                                                                                                                                                                                                                         |
|--------------------------------------------------------------------------------------|----------------------------------------------------------------------------------------------------------------------------------------------------------------------------------------------------------------------------------------------------------------------------------------------------------------------------------------------------------------------------------------------------------------------------------------------------------------------------------------------------------------------------------------------------------------------------------------------------------------------------------|
| When I close the lid of my notebook, the display of the external monitor goes blank. | <p>By default, most notebooks go into <b>Standby</b> or <b>Hibernate</b> mode when the lid is closed.</p> <p>To change this setting:</p> <p>Open the <b>Control Panel</b> and select <b>Power Options</b>.</p> <ul style="list-style-type: none"> <li>• <i>Windows Vista</i>: Select <b>Choose what closing the lid does</b> on the left column. Select the <b>When I close the lid</b>, and then select <b>Do nothing</b>.</li> <li>• <i>Windows XP</i>: Select the <b>Advanced</b> tab. In the <b>Power buttons</b> section, under the option <b>When I close the lid of my computer</b>, select <b>Do nothing</b>.</li> </ul> |

## Audio Output

| <b>Problem</b>                                                                                                                           | <b>Possible Solution</b>                                                                                                                                                                                                                                                                                                                                                                                                                                                                                                                                             |
|------------------------------------------------------------------------------------------------------------------------------------------|----------------------------------------------------------------------------------------------------------------------------------------------------------------------------------------------------------------------------------------------------------------------------------------------------------------------------------------------------------------------------------------------------------------------------------------------------------------------------------------------------------------------------------------------------------------------|
| I cannot hear anything through my notebook speakers and my built-in microphone does not work after connecting to the Dell Wireless Dock. | <p>By default, most notebooks send the audio output to the Dell Wireless Dock when associated, thereby disabling your notebook's built-in speakers and microphone.</p> <p>To enable the speakers and microphone:</p> <ol style="list-style-type: none"> <li>1 Open the <b>UWB Radio and Host Settings</b> window in the <b>Wireless USB Manager</b>.</li> <li>2 Select <b>Laptop</b> to enable the speakers and microphone on your notebook.</li> </ol> <p><b>NOTE:</b> You must restart the application currently using the audio device to enable this change.</p> |





# Specifications

---

## Physical

|        |          |
|--------|----------|
| Height | 172 mm   |
| Depth  | 26–80 mm |
| Width  | 116 mm   |
| Weight | 320 g    |

---

## I/O Connectors

|          |                                                                                                                                       |
|----------|---------------------------------------------------------------------------------------------------------------------------------------|
| USB      | Four 4-pin USB 2.0 compliant connectors                                                                                               |
| mini-USB | One mini-USB connector for cable association                                                                                          |
| Audio    | Speaker and microphone connectors                                                                                                     |
| Video    | DVI-I connector.<br>Maximum resolution supported:<br>1680x1050 — wide screen aspect ratio<br>1600x1200 — standard screen aspect ratio |

---

## AC Adapter Power

|               |                       |
|---------------|-----------------------|
| Input Voltage | 100–240 VAC, 50/60 Hz |
| Wattage       | 65 W                  |
| Amperage      | 1.5 A                 |

---

## System Level Operational Specifications

|                               |                           |
|-------------------------------|---------------------------|
| Temperature (system external) | 0°C–35°C, typical at 25°C |
| Temperature ramp rate         | 0°C/hr–35°C/hr            |
| Humidity (non-condensing)     | 10%–80%                   |
| Humidity ramp rate            | 20%/hr maximum            |
| Altitude                      | 0–3048 m                  |
| Operating Range               | 1 meter (optimum)         |

---

**System Level Non-Operational and Shipping Specifications**

---

|                               |                |
|-------------------------------|----------------|
| Temperature (system external) | -40°C to 65°C  |
| Temperature ramp rate         | 0°C/hr–20°C/hr |
| Humidity (non-condensing)     | 5%–95%         |
| Humidity ramp rate            | 20%/hr maximum |
| Altitude                      | 0–10670 m      |

# General Safety Information

Use the following safety guidelines to help ensure your own personal safety, and to help protect your equipment and working environment from potential damage.

You can find additional Safety Best Practices information on the Regulatory Compliance Homepage at [www.dell.com/regulatory\\_compliance](http://www.dell.com/regulatory_compliance).



**NOTE:** In this document, the terms *product*, *equipment*, and *device* are used interchangeably and refer to all portable devices (such as notebooks, port replicators, media bases, docking stations, and similar devices), desktop computers, printers, and monitors.



**WARNING:** Use of controls, adjustments, procedures, connections, or signal types other than those specified in your documentation may result in exposure to shock, electrical hazards, and/or mechanical hazards.



**CAUTION:** Dell products are not intended for use in patient healthcare environments unless specially designated.



**CAUTION:** Dell products are not designed for use in flammable or explosive environments.

When setting up the equipment for use:

- Place the equipment on a hard, level surface.
- Do not stack the equipment, place it in an enclosed space, or otherwise install it where it is subject to heated air. The equipment should have at least 10.2 cm (4 in) of clearance on all vented sides to permit the airflow required for proper ventilation. Restricting airflow can damage the equipment or cause overheating.

When operating your equipment:

 **WARNING: Do not use your equipment in a wet environment. Protect equipment from liquid intrusion.**

- Do not use damaged equipment, including exposed, frayed, or damaged power cords.
- Disconnect your device and all peripherals (including an integrated or optional modem or TV tuner) from any wall connections during an electrical (lightning) storm, or when you will be away for extended periods.
- Do not push any objects into the air vents or openings of your equipment. Doing so can cause fire or electric shock by shorting out interior components.
- Do not allow your notebook or adapter to operate with the base resting directly on exposed skin for extended periods of time. The surface temperature of the base will rise during normal operation, particularly when AC power is present. Allowing sustained contact with exposed skin can cause discomfort or burn.
- Contact Dell (or an authorized dealer or service center for retail purchases) if your equipment does not operate normally.


## General Power Safety

Observe the following guidelines when connecting your equipment to a power source.

If your equipment uses an AC adapter:

- Use only the Dell provided AC adapter approved for use with this device: E16WD01:PA-2E. Use of another AC adapter may cause a fire or explosion.
- Place the AC adapter in a ventilated area, such as a desk top or on the floor, when you use it to run the Dell Wireless Dock.
- The AC adapter may become hot during normal operation of your Dell Wireless Dock. Use care when handling the adapter during or immediately after operation.

## Earphone and Headphone Safety

 **WARNING: Excessive sound pressure from earphones or headphones can cause hearing damage or loss. Adjustment of the volume control and/or the equalizer to settings other than the center position may increase the earphones or headphones output voltage, and therefore the sound pressure level.**

The use of factors influencing the earphones or headphones output other than those specified by the manufacturer (e.g. operating system, equalizer software, firmware, driver) may increase the earphones or headphones output voltage and therefore the sound pressure level.

The use of earphones or headphones other than those specified by the manufacturer may lead to heightened sound pressure level.

## Ergonomic Instructions

For information concerning ergonomics, please go to the Regulatory Compliance Homepage at [www.dell.com/regulatory\\_compliance](http://www.dell.com/regulatory_compliance).

## Environmental Information

### Recycling Information

Dell recommends that customers dispose of their used computer hardware, monitors, printers, and other peripherals in an environmentally sound manner. Potential methods include reuse of parts or whole products and recycling of products, components, and/ or materials.

For specific information on Dell's worldwide recycling programs, see [www.dell.com/recyclingworldwide](http://www.dell.com/recyclingworldwide).

### Waste Electrical and Electronic Equipment (WEEE) Directive



In the European Union, this label indicates that this product should not be disposed of with household waste. It should be deposited at an appropriate facility to enable recovery and recycling. For information on how to recycle this product responsibly in your country, visit [www.euro.dell.com/recycling](http://www.euro.dell.com/recycling).

## **Registration, Evaluation, and Authorization of Chemicals (REACH)**

REACH is the European Union chemical substances regulatory framework. Information on substances of very high concern contained in Dell products in a concentration above 0.1% weight by weight (w/w) can be found at [www.dell.com/reach](http://www.dell.com/reach).

## **Finding Additional Information**

For additional user information about your Dell Wireless Dock and individual components (such as storage drives, PC cards, and other peripherals), see the Dell Support website at [support.dell.com/manuals](http://support.dell.com/manuals).

For additional Safety Best Practices and Regulatory information, see the Regulatory Compliance Homepage at [www.dell.com/regulatory\\_compliance](http://www.dell.com/regulatory_compliance).

For additional recycling information, see the Global Recycling Homepage at [www.dell.com/recyclingworldwide](http://www.dell.com/recyclingworldwide).

## **Export Regulations**

Customer acknowledges that these Products, which may include technology and software, are subject to the customs and export control laws and regulations of the United States ("U.S.") and may also be subject to the customs and export laws and regulations of the country in which the Products are manufactured and/or received. Customer agrees to abide by those laws and regulations. Further, under U.S. law, the Products may not be sold, leased or otherwise transferred to restricted end-users or to restricted countries. In addition, the Products may not be sold, leased or otherwise transferred to, or utilized by an end-user engaged in activities related to weapons of mass destruction, including without limitation, activities related to the design, development, production or use of nuclear weapons, materials, or facilities, missiles or the support of missile projects, and chemical or biological weapons.



# Additional Country-Specific Safety, Regulatory, and Environmental Information

## Korea (Korean)

### Energy Statement

Power consumption of this product can be 0 if it is unplugged.

## China (S. Chinese)

### China RoHS

In accordance with China's Administrative Measures on the Control of Pollution Caused by Electronic Information Products (also known as China RoHS), the following information is provided regarding the names and concentration levels of toxic and/or hazardous substances which may be contained in Dell products. The China RoHS requirements can be found in Chinese MII MCV standard: "Requirements for Concentration Limits for Certain Hazardous Substances in Electronic Information Products."

| Part Name                       | Toxic or Hazardous Substances and Elements |              |              |                             |                                |                                       |
|---------------------------------|--------------------------------------------|--------------|--------------|-----------------------------|--------------------------------|---------------------------------------|
|                                 | Lead (Pb)                                  | Mercury (Hg) | Cadmium (Cd) | Hexavalent Chromium (Cr VI) | Polybrominated biphenyls (PBB) | Polybrominated diphenyl ethers (PBDE) |
| Chassis/Bezel                   | X                                          | 0            | 0            | 0                           | 0                              | 0                                     |
| Printed Circuit Assembly (PCA)* | X                                          | 0            | 0            | 0                           | 0                              | 0                                     |
| Cables/Cords/ Connectors        | X                                          | 0            | 0            | 0                           | 0                              | 0                                     |
| Power Supply/ Power Adapter     | X                                          | 0            | 0            | 0                           | 0                              | 0                                     |

\* Printed Circuit Assembly includes all Printed Circuit Boards (PCBs) and their respective population of discrete components, ICs, and connectors.

"0" indicates the hazardous and toxic substance content of the part is lower than the threshold defined by the MCV Standard.

"X" indicates the hazardous and toxic substance content of the part is over the threshold defined by the MCV Standard. In all cases where an X is shown, Dell uses an allowable exemption per EU RoHS.



## Free Manuals Download Website

<http://myh66.com>

<http://usermanuals.us>

<http://www.somanuals.com>

<http://www.4manuals.cc>

<http://www.manual-lib.com>

<http://www.404manual.com>

<http://www.luxmanual.com>

<http://aubethermostatmanual.com>

Golf course search by state

<http://golfingnear.com>

Email search by domain

<http://emailbydomain.com>

Auto manuals search

<http://auto.somanuals.com>

TV manuals search

<http://tv.somanuals.com>