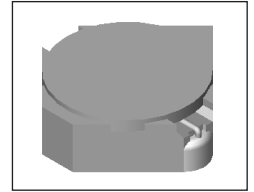


SMT Power Inductor

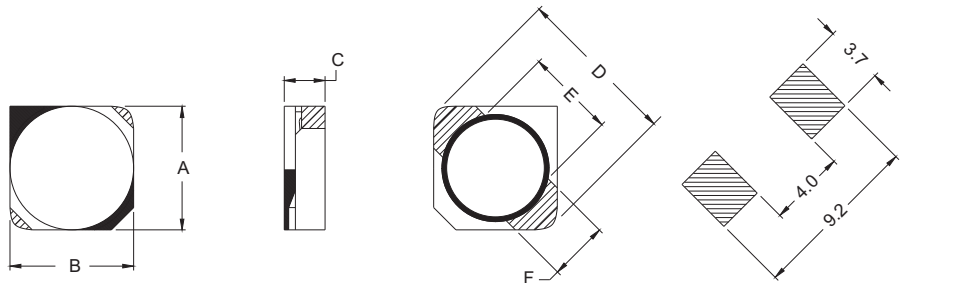
SILM720 Type

Features

- RoHS compliant.
- Low profile, SMD type.
- Magnetically shielded, suitable for high density mounting.
- High energy storage and low DCR.
- Provided with embossed carrier tape packing.
- Ideal for power source circuits, DC-DC converter, DC-AC inverters inductor applications.
- In addition to the standard versions shown here, customized inductors are available to meet your exact requirements.



Mechanical Dimension:



UNIT : mm/inch
 A = 7.0 / 0.276 Max.
 B = 7.0 / 0.276 Max.
 C = 2.0 / 0.079 Max.
 D = 8.5 / 0.335 Max.
 E = 4.8±0.3 / 0.189±0.012
 F = 3.0±0.2 / 0.118±0.008

Electrical Characteristics: 25°C: 100KHz, 0.1V

PART NO.	L ¹ (uH)	DCR (Ω) MAX	I _{rated} ² (A _{dc})
SILM720 - 4R7	4.7	0.070	2.40
SILM720 - 100	10.0	0.150	1.80
SILM720 - 300	30.0	0.420	1.03

1. Tolerance of inductance: ±30%.
2. I_{rated} is the DC current which cause the inductance drop 35% of its nominal inductance without current and the surface temperature of the part increase less than 45°C.
3. Operating temperature : -20°C to 105°C (including self-temperature rise).



DELTA ELECTRONICS, INC.

(TAOYUAN PLANT CPBG) 252, SAN YING ROAD, KUEISAN INDUSTRIAL ZONE, TAOYUAN SHIEN, 333, TAIWAN, R.O.C.
 TEL: 886-3-3591968; FAX: 886-3-3591991
<http://www.deltaww.com>

Free Manuals Download Website

<http://myh66.com>

<http://usermanuals.us>

<http://www.somanuals.com>

<http://www.4manuals.cc>

<http://www.manual-lib.com>

<http://www.404manual.com>

<http://www.luxmanual.com>

<http://aubethermostatmanual.com>

Golf course search by state

<http://golfingnear.com>

Email search by domain

<http://emailbydomain.com>

Auto manuals search

<http://auto.somanuals.com>

TV manuals search

<http://tv.somanuals.com>