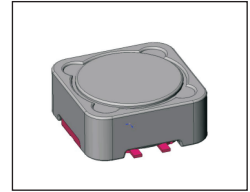


# SMT Power Inductor

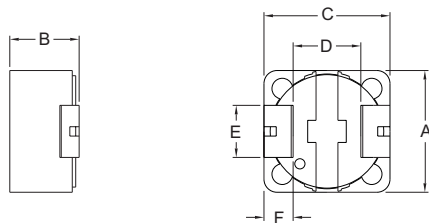
## SIQ1048 Type

### Features

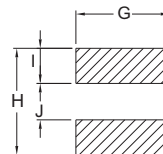
- RoHS compliant.
- Low profile (4.8mm max. height), high current(13.6A) SMD type.
- Magnetically shielded, suitable for high density mounting.
- High energy storage and low DCR.
- Provided with embossed carrier tape packing.
- Ideal for power source circuits, DC-DC converter, DC-AC inverters inductor applications.
- In addition to the standard versions shown here, customized inductors are available to meet your exact requirements.



### Mechanical Dimension:



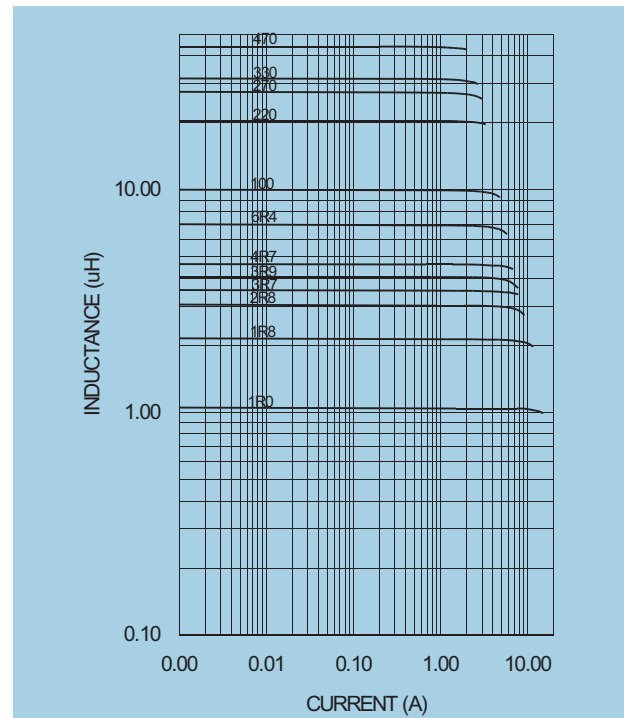
### RECOMMENDED PAD PATTERNS



UNIT:mm/inch  
 A = 10.0 ± 0.3 / 0.394 ± 0.012  
 B = 4.8 / 0.189 MAX.  
 C = 10.0 ± 0.3 / 0.394 ± 0.012  
 D = 6.4 ± 0.3 / 0.252 ± 0.012  
 E = 4.6 ± 0.2 / 0.181 ± 0.008  
 F = 1.7 ± 0.2 / 0.067 ± 0.008  
 G = 5.4 / 0.213  
 H = 10.8 / 0.425  
 I = 2.9 / 0.114  
 J = 5.0 / 0.197

### Electrical Characteristics: 25°C: 100KHz, 0.1V

PART NO.	L <sup>1</sup> (uH)	DCR (Ω) TYP.	Isat (Adc)	I <sub>rms</sub> <sup>3</sup> (Adc)
SIQ1048 - 1R0	1.0	0.0070	13.6	9.7
SIQ1048 - 1R8	1.8	0.0110	10.4	9.5
SIQ1048 - 2R8	2.8	0.0120	8.3	6.1
SIQ1048 - 3R7	3.7	0.0160	7.0	5.3
SIQ1048 - 3R9	3.9	0.0160	7.0	7.0
SIQ1048 - 4R7	4.7	0.0185	6.1	5.2
SIQ1048 - 6R4	6.4	0.0280	5.2	4.8
SIQ1048 - 100	10.0	0.0360	4.3	4.5
SIQ1048 - 220	22.0	0.0780	3.0	3.0
SIQ1048 - 270	27.0	0.0920	2.7	2.7
SIQ1048 - 330	33.0	0.1050	2.4	2.4
SIQ1048 - 470	47.0	0.1550	1.8	1.8



1. Tolerance of inductance: 1.0~1.8uH ±30%, 2.8~470uH ±20%.
2. Irated is the DC current which cause the inductance drop 20% typical of its nominal inductance without current and the surface temperature of the part increase less than 45°C.
3. Operating temperature: -20°C to 105 (including self-temperature rise).



**DELTA ELECTRONICS, INC.**

(TAOYUAN PLANT CPBG) 252, SAN YING ROAD, KUEISAN INDUSTRIAL ZONE, TAOYUAN SHIEN, 333, TAIWAN, R.O.C.

TEL: 886-3-3591968; FAX: 886-3-3591991

<http://www.deltawww.com>

## Free Manuals Download Website

<http://myh66.com>

<http://usermanuals.us>

<http://www.somanuals.com>

<http://www.4manuals.cc>

<http://www.manual-lib.com>

<http://www.404manual.com>

<http://www.luxmanual.com>

<http://aubethermostatmanual.com>

Golf course search by state

<http://golfingnear.com>

Email search by domain

<http://emailbydomain.com>

Auto manuals search

<http://auto.somanuals.com>

TV manuals search

<http://tv.somanuals.com>