

Fast Ethernet 3 Parallel ports Print Server

PS-3103P

User's Manual

Version 1.1 / October, 2008





Copyright© by Edimax Technology Co, LTD. all rights reserved. No part of this publication may be reproduced, transmitted, transcribed, stored in a retrieval system, or translated into any language or computer language, in any form or by any means, electronic, mechanical, magnetic, optical, chemical, manual or otherwise, without the prior written permission of this company.

This company makes no representations or warranties, either expressed or implied, with respect to the contents hereof and specifically disclaims any warranties, merchantability or fitness for any particular purpose. Any software described in this manual is sold or licensed "as is". Should the programs prove defective following their purchase, the buyer (and not this company, its distributor, or its dealer) assumes the entire cost of all necessary servicing, repair, and any incidental or consequential damages resulting from any defect in the software. Further, this company reserves the right to revise this publication and to make changes from time to time in the contents hereof without obligation to notify any person of such revision or changes.

The product you have purchased and the setup screen may appear slightly different from those shown in this QIG. For more detailed information about this product, please refer to the User's Manual on the CD-ROM. The software and specifications are subject to change without notice. Please visit our web site www.edimax.com for the update. All right reserved including all brand and product names mentioned in this manual are trademarks and/or registered trademarks of their respective holders.

Federal Communication Commission Interference Statement

This equipment has been tested and found to comply with the limits for a Class B digital device, pursuant to Part 15 of FCC Rules. These limits are designed to provide reasonable protection against harmful interference in a residential installation. This equipment generates, uses, and can radiate radio frequency energy and, if not installed and used in accordance with the instructions, may cause harmful interference to radio communications. However, there is no guarantee that interference will not occur in a particular installation. If this equipment does cause harmful interference to radio or television reception, which can be determined by turning the equipment off and on, the user is encouraged to try to correct the interference by one or more of the following measures:

1. Reorient or relocate the receiving antenna.
2. Increase the separation between the equipment and receiver.
3. Connect the equipment into an outlet on a circuit different from that to which the receiver is connected.
4. Consult the dealer or an experienced radio technician for help.

Please check the declaration of conformity on www.edimax.com

DISCLAIMER

This company makes no representations or warranties, either expressed or implied, with respect to the contents hereof and specifically disclaims any warranties, merchantability or fitness for any particular purpose. Any software described in this manual is sold or licensed "as is". Should the programs prove defective following their purchase, the buyer (and not this company, its distributor, or its dealer) assumes the entire cost of all necessary servicing, repair, and any incidental or consequential damages resulting from any defect in the software. Further, this company reserves the right to revise this publication and to make changes from time to time in the contents hereof without obligation to notify any person of such revision or changes.

Contents

1.	INTRODUCTION.....	1
1.1	Product Introduction.....	2
1.2	Product Package	3
1.3	Network Printing Architecture	4
1.3.1	Print Server Network Functions.....	5
1.3.2	Network Printing Functions for Clients.....	5
1.3.3	Network Printing Functions for Network Server.....	8
1.4	Network Printing Environment	9
1.5	Contents of the User's Manual	11
1.6	Firmware & Printing Function	13
2.	HARDWARE INSTALLATION.....	14
3.	WINDOWS PEER-TO-PEER NETWORK.....	15
3.1	System Architecture.....	16
3.2	Installation Wizard.....	18
3.3	Administrator Installation and Setup	19
3.4	Administrator Utilities	26
3.5	Client Installation and Setup	27
3.6	Client Utilities	32
3.6.1	Network Ports Quick Setup	33
3.6.2	Remote Ports (Utility).....	35
3.7	Windows Add Printer Procedure.....	37
3.7.1	Windows Vista.....	37
3.7.2	Windows XP	41
4.	WINDOWS NT/2000/2003 NETWORK	45
4.1	System Architecture.....	46
4.2	Windows NT/2000/2003 Server Installation and Setup .	47
4.3	User Installation and Setup.....	49

5.	NETWARE NETWORK	50
5.1	System Architecture.....	51
5.2	NetWare 3.x/4.x/5.x Installation & Setup	53
5.2.1	Installation Using PCONSOLE	53
6.	UNIX SYSTEM NETWORK.....	57
6.1	Introduction	58
6.2	Enable Print Server's TCP/IP Support.....	59
6.3	Setup Print Server's IP Address	60
6.3.1	ARP & Ping Assignment	60
6.3.2	DHCP.....	61
6.3.3	BOOTP	62
6.3.4	RARP.....	64
6.4	Verify Print Server's IP Address	65
6.5	Configure Remote lpd Printing on the Host	66
6.6	Print a Test Page	69
7.	CONFIGURATION UTILITY	70
7.1	Introduction	71
7.2	Search for All Available Print Server.....	73
7.3	Status of Print Server.....	74
7.4	Setup the Print Server	76
7.5	General Configuration.....	78
7.6	TCP/IP Configuration.....	79
7.7	Netware Print Server Configuration	81
7.8	AppleTalk Configuration	82
7.9	SNMP Configuration	83
7.10	SMB Configuration.....	84
7.11	System Configuration	85
7.12	Wizard.....	87
7.13	Report.....	91

8.	WEB MANAGEMENT	92
8.1	Introduction	93
8.2	Getting Print Server Information	96
8.3	Getting Printer Status	97
8.4	Getting NetWare Information	98
8.5	Getting DHCP Status	99
8.6	Changing Device Configuration	100
8.7	Setting IP Address	102
8.8	Configuring DHCP Parameters.....	103
8.9	Configuring E-Mail Printing	105
8.10	Configuring SMB.....	107
8.11	Configuring AppleTalk	108
8.12	Configuring SNMP Parameters	109
8.13	System Utilities	110
8.14	Firmware Upgrading	112
9.	IPP PRINTING.....	113
9.1	Introduction	114
9.2	System Setup	115
9.2.1	Print Server Side	115
9.2.2	Client Side.....	115
10.	LPR PRINTING	120
10.1	Introduction	121
10.2	Standard LPR Settings in Windows XP	122
11.3	Standard LPR Settings in Windows Vista	129
11.4	Standard LPR Settings in MAC OS 10.x	135
11.4.1	MAC 10.4.x	135
11.4.2	MAC 10.3.x	136
12.	WINDOWS XP SP2 SETUP	140

1. Introduction

1.1 Product Introduction

Thank you for purchasing and using our print server. This print server allows your printer to become a shared device on the network. It offers printing flexibility and manageability on your Local Area Network at an extremely low cost and with an absolute minimum setup and maintenance required.

This print server provides a network port (10/100Mbps Ethernet) and three printer ports.

This print server supports IPX/SPX, NetBEUI, TCP/IP and AppleTalk protocols. It is the best network printing solutions for various common network operating systems such as Windows 98SE/Me/NT/2000/XP/2003/Vista, NetWare, Unix/Linux and MAC OS, etc.

With the help of Installation Wizard, you can easily and instantly complete the settings for the printing environment, and start enjoying the fantastic features provided by the print server.

In the following chapters, we will introduce in detail the printing features, installation methods, and system configuration for different network environments.

If you would like to set up and install print server quickly, please refer to the Quick Installation Guide that comes along with this print server.

1.2 Product Package

This package contains the following components:

One Print Server

One Power Adapter

One Quick Installation Guide

One CD (Utility, Multi-language Quick Installation Guide & User Manual)

1.3 Network Printing Architecture

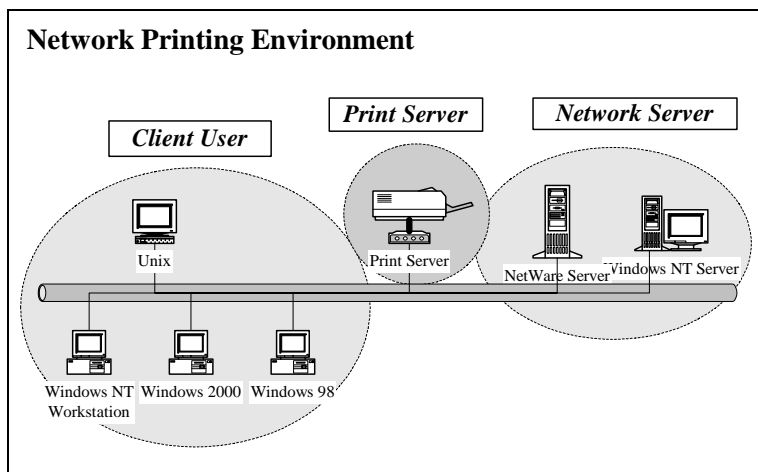
This section illustrates how print server functions and operates on the network. Before you install and use print server, it is strongly recommended that you read this section completely, and select only the chapters you need according to your network operating system by “Contents of the User’s Manual” in next section.

This section will first introduce the role every component plays in the network-printing environment.

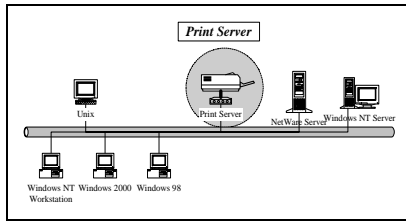
Print Server

Client User

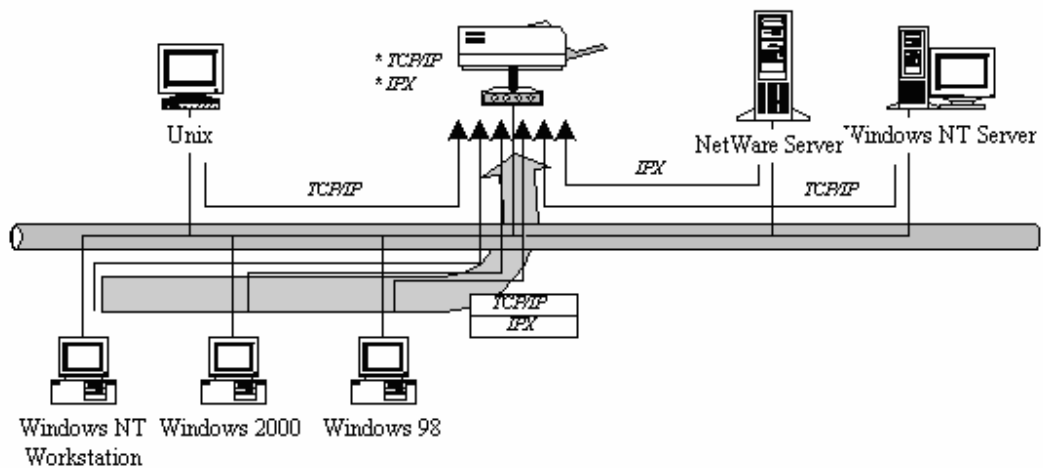
Network Server (optional)



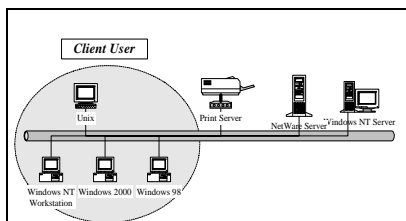
1.3.1 Print Server Network Functions



Because print server supports IPX/SPX, NetBEUI, TCP/IP and AppleTalk network protocols, any networked computer can directly print to the print server from any of its installed protocol.



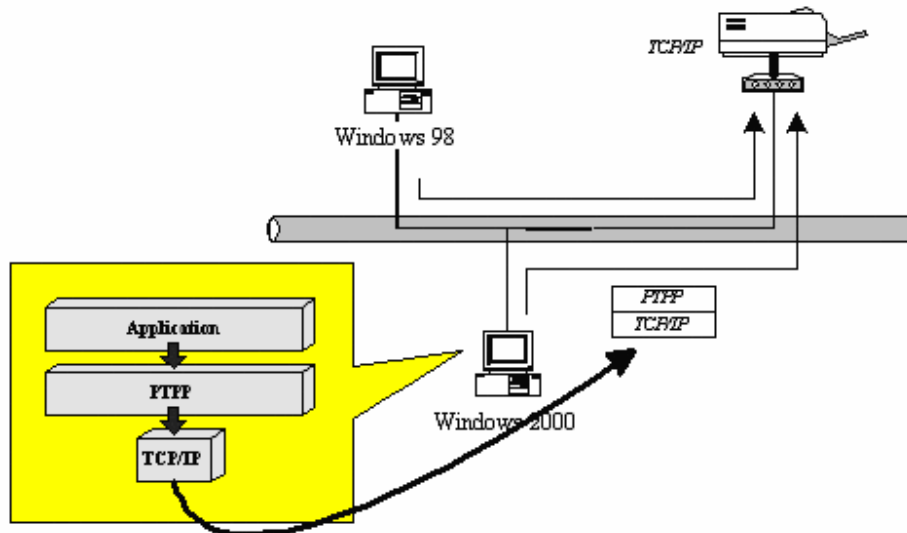
1.3.2 Network Printing Functions for Clients



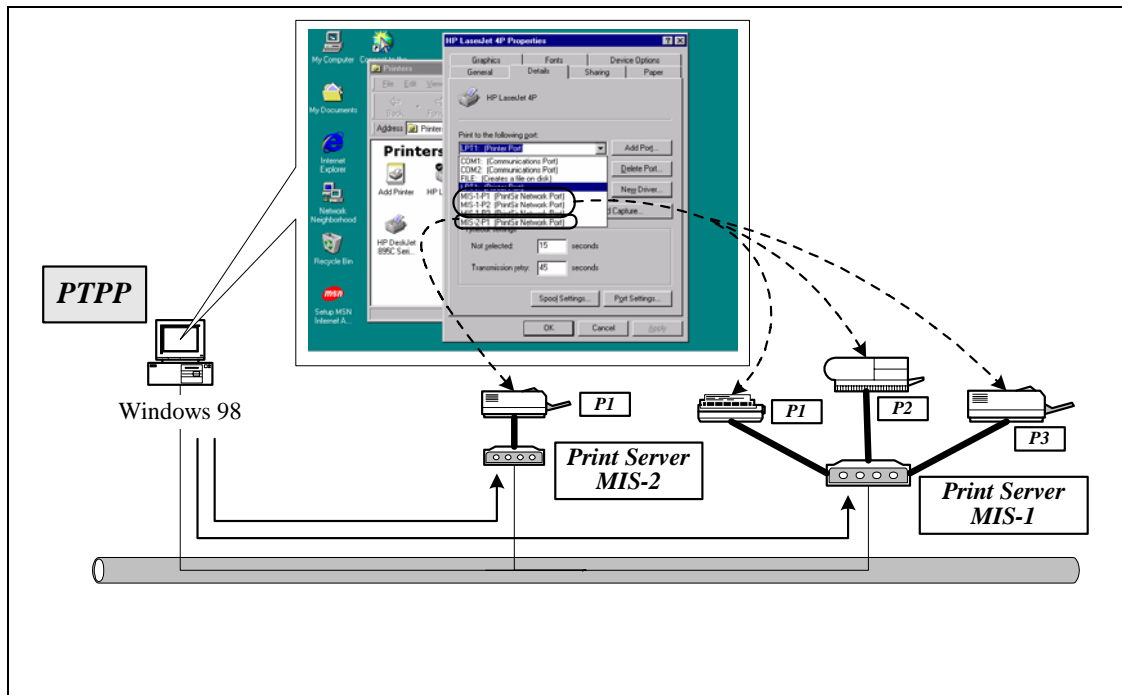
Common operating systems for clients are classified as following:

Windows 98SE/Me/NT/2000/XP/2003/Vista

Our print server system provides PTPP (Peer-to-Peer Printing) driver and utilities for Windows 98SE/Me/NT/2000/XP/2003/Vista users. PTPP (Peer-to-Peer Printing) supports TCP/IP protocol.



In the client installation procedure, after PTPP (Peer-to-Peer Printing Driver) is installed into Windows, the system will automatically (manual configuration is also allowed) search all the print servers on the network, and then add their printing ports into Windows' printing port (see below).



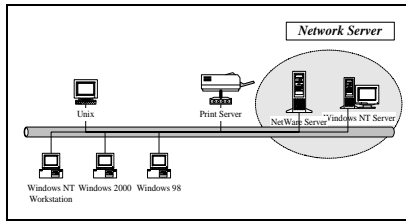
UNIX / Linux

UNIX (include HP/UX, SCO Unix, SunOS, Solaris, Unixware DECUnix, IBM AIX and others) and Linux use the system-standard LPR to print through print server.

MAC OS

MAC OS can use the system-standard AppleTalk network to print through print server.

1.3.3 Network Printing Functions for Network Server



Common network servers are classified as following:

Windows NT/2000/2003

Our print server system provides PTPP (Peer-to-Peer Printing) driver and utilities for Windows NT/2000/2003. After PTPP is installed, the server can directly print through print server. Adding this printing function into Windows NT/2000/2003 Server allows print queue, user authority management, and many other advanced features to be used.

NetWare 3.x/4.x/5.x

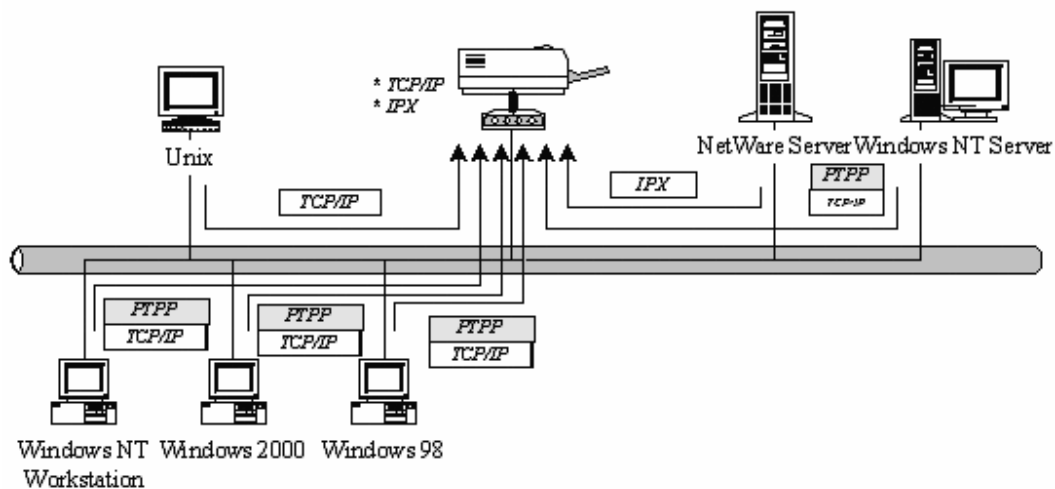
In NetWare environment, print server offers various printing modes like print queue, remote printer, etc.

1.4 Network Printing Environment

Common network environment are classified as following:

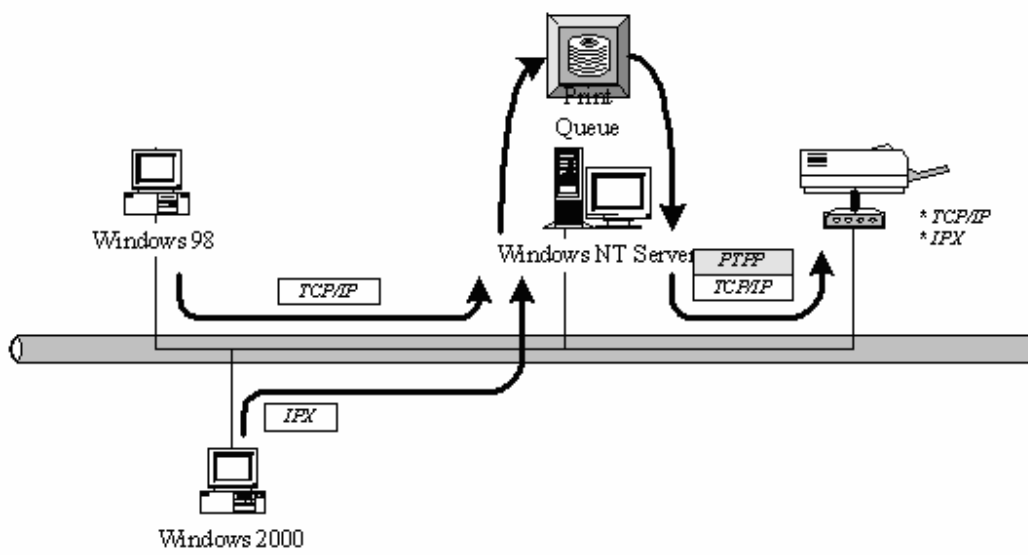
Windows Peer-to-Peer Network

The client's PTPP driver will use TCP/IP protocol to print through print server.

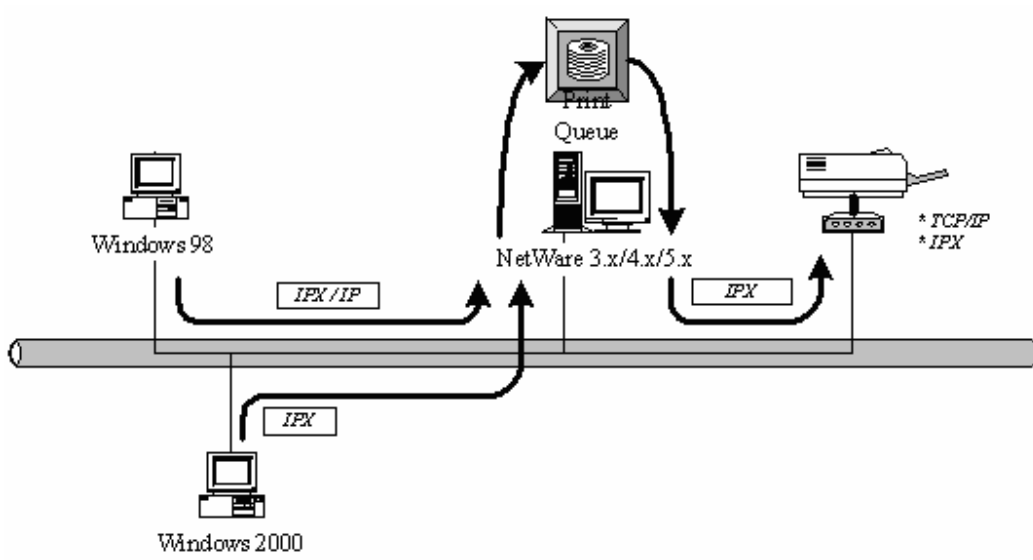


Windows NT/2000/2003 Network

Network printing function will become available after PTPP driver is installed into Windows NT/2000/2003. Adding this printing function into Windows NT/2000/2003 Server allows print queue, user authority management, and many other advanced features to be used.



NetWare Network (see below)



1.5 Contents of the User's Manual

Chapter 2 explains print server's hardware installation and configuration. It is strongly recommended for you to read.

The following chapters 3, 4, 5, and 6 introduces:

Chapter 3. Windows Peer-to-Peer Network

Chapter 4. Windows NT/2000 Server-Based Network

Chapter 5. NetWare Network

Chapter 6. UNIX System Network

You may select the appropriate chapters and sections to read depending on your network printing's requirement.

Chapter 7 and chapter 8 introduce print server's management and configuration utilities on Windows and Web Browser's environment respectively. You may select the appropriate management utility according to the administrator's computer platform.

Chapter 9 introduces Print Server's Email Printing function and setup procedure. The Email Printing provides a new way to print documents across the Internet by the Email.

Chapter 10 introduces Print Server's IPP Printing function and setup procedure. The IPP Printing provides a convenient way to print documents across the Internet by the IPP protocol.

Chapter 11 introduces Print Server's LPR Printing function and Windows XP/Vista and MAC OS 10.x standard setup procedures. The LPR Printing (Line Printer Remote technology) allows users to connect to printers via TCP/IP for printing sharing.

Chapter 12 In Windows XP SP2, you may not find any print server listed on the "Available Ports" in "Network Ports Quick Setup". Please follow the instruction in this chapter and resolve the problem.

1.6 Firmware & Printing Function

The print server provides a complete network printing solution. The feature set is listed below:

PTPP (Peer-to-Peer-Printing)

TCP/IP (LPR)

IPP Printing

NetWare Bindery Printing

AppleTalk

SMB Printing

2. Hardware Installation

1. Unpack the print server package and verify that all the items listed in the section 1.2 are provided.
2. Connect the print server to the printer you want to share on the network by standard Parallel cable.
3. Connect the print server to your network by attached the network cable to the UTP port of the print server.
4. Connect the power adapter to the print server. The print server will perform the Power-On-Self-Test (POST) after it is powered on. During the POST, the status LED will flash. When the status LED is unlighted, the print server is ready.

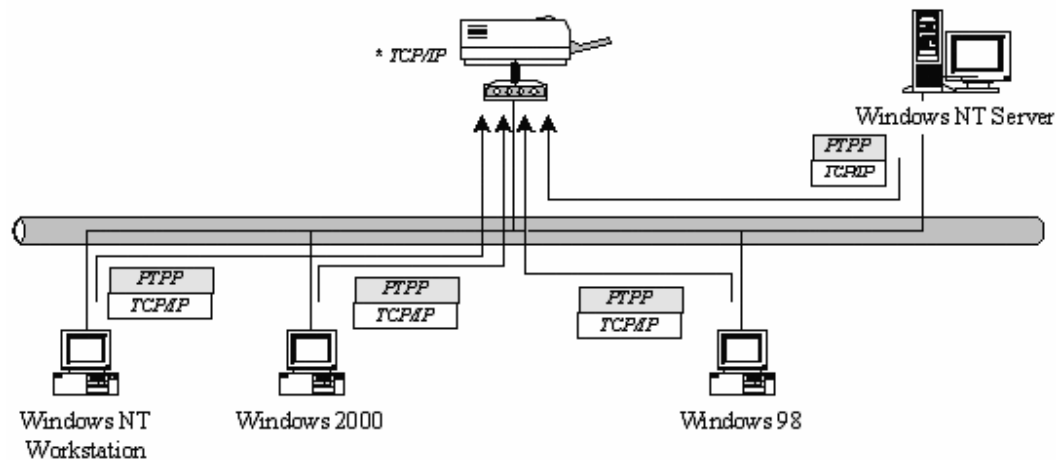
NOTE1: MUST use the power adapter shipped with the print server, do NOT use any other power adapter from any sources.

NOTE2: To prevent the compatibility problem between print server and a few printer, it is recommended that you power on the print server before the printer.

3. Windows Peer-to-Peer Network

3.1 System Architecture

Print server supports Windows Peer-to-Peer network printing mode, which is suitable for most medium and small network environments. Through quick and simple installation procedure, users can immediately enjoy the convenience of network printing.



Installation procedure is separated into following two parts:

1. Administrator Installation and Setup (refer to section 2 for more detailed information).

System administrators must:

Install administrator's utilities into his/her computer.

Configure print server from administrator's configuration utility.

2. Client Installation and Configuration (refer to section 3 for more detailed information).

Client users must install Windows PTPP driver (Peer-to-Peer Printing) for network printing.

In addition, after PTPP is installed, the system will automatically search for all print servers on the network, and add the printing port of the print servers into Windows' printing port (refer to Network Printing Architecture in section 1.4 for more detailed information).

3.2 Installation Wizard

This wizard can be run in Windows 2000/XP/Vista. **The following procedures are operated in Windows XP.**



If you lose the CD ROM or you prefer the traditional setup procedure, please follow the instruction as following step in this quick installation guide.

3.3 Administrator Installation and Setup

****PLEASE FIND THE UTILITY MANUALLY FROM CD-ROM DRIVE'S ROOT DIRECTORY OR DOWNLOAD IT FROM EDIMAX WEBISTE. IF YOU HAVE ANY QUESTION PLEASE CHECK WITH EDIMAX LOCAL TECHNICAL SUPPORT TEAM.**

The Administrator Installation Program executes a wizard-driven procedure that performs the following tasks:

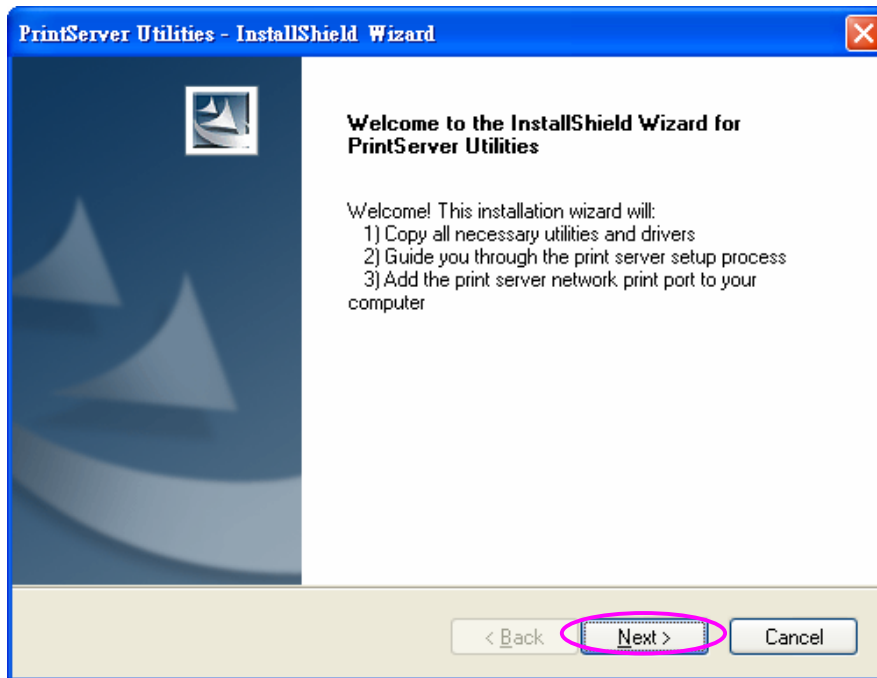
- Install all necessary utilities and drivers in your PC (including the client utilities).
- Prompt to configure the print server (including the print server name and IP Address).
- Add the network port of the print server to your PC.

After the installation, perform the standard "Add Printer" procedure and choose the print server's "Network Port" in the "Available Ports" list. Then, you can test printing function from the Administrator PC.

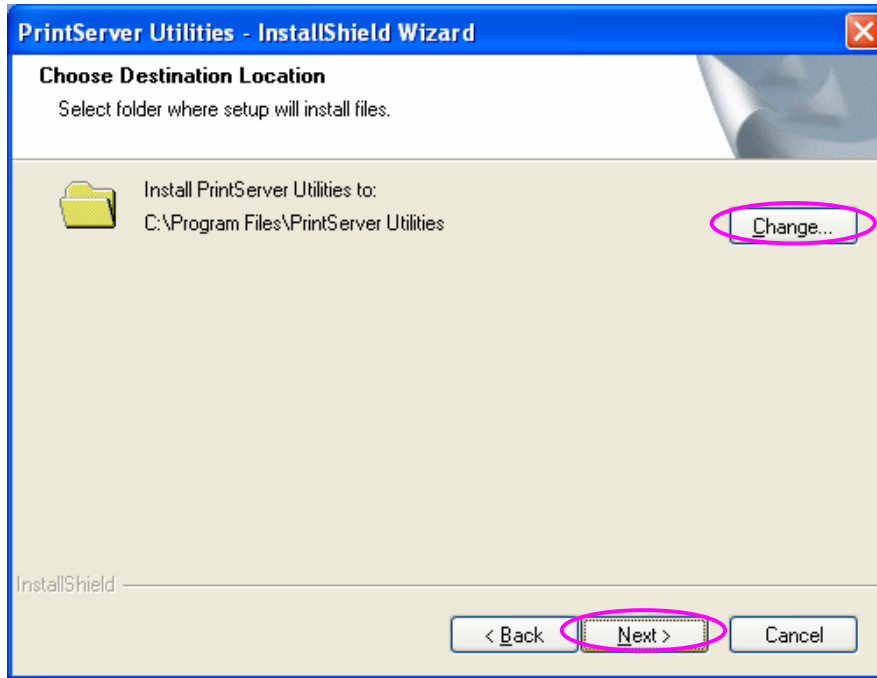
The Administrator Installation can be performed on Windows 2000/XP/2003/Vista with the same user interface. Before the installation, please verify that your network protocol is installed on your PC (TCP/IP, IPX and/or NetBEUI). Note that the following steps are running in Windows XP, for other Operation Systems the procedures are similar.

1. Please execute the Administrator installation software manually.

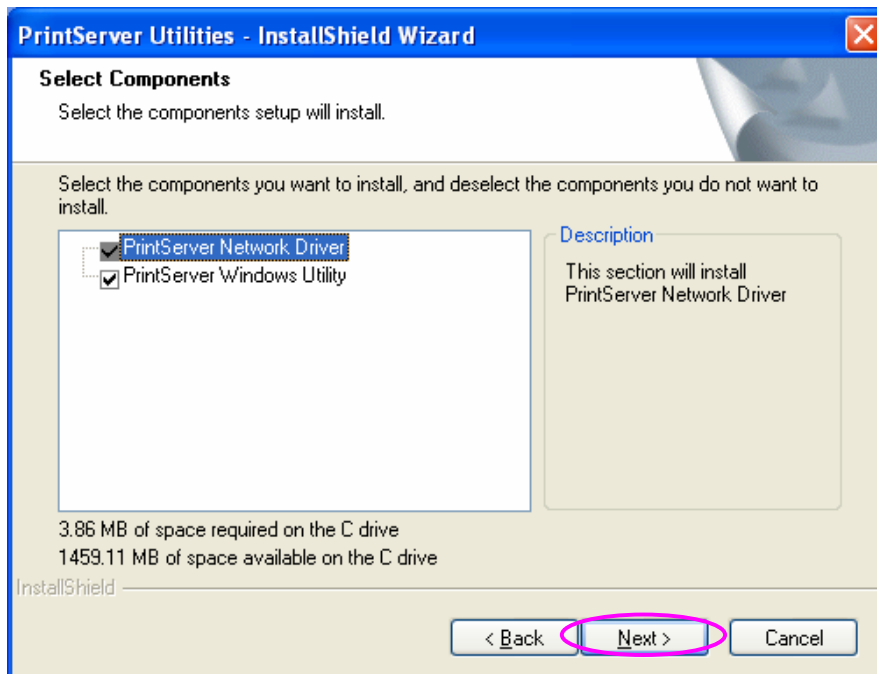
2.The “Print Server Utilities” window will be displayed. Click “Next”.



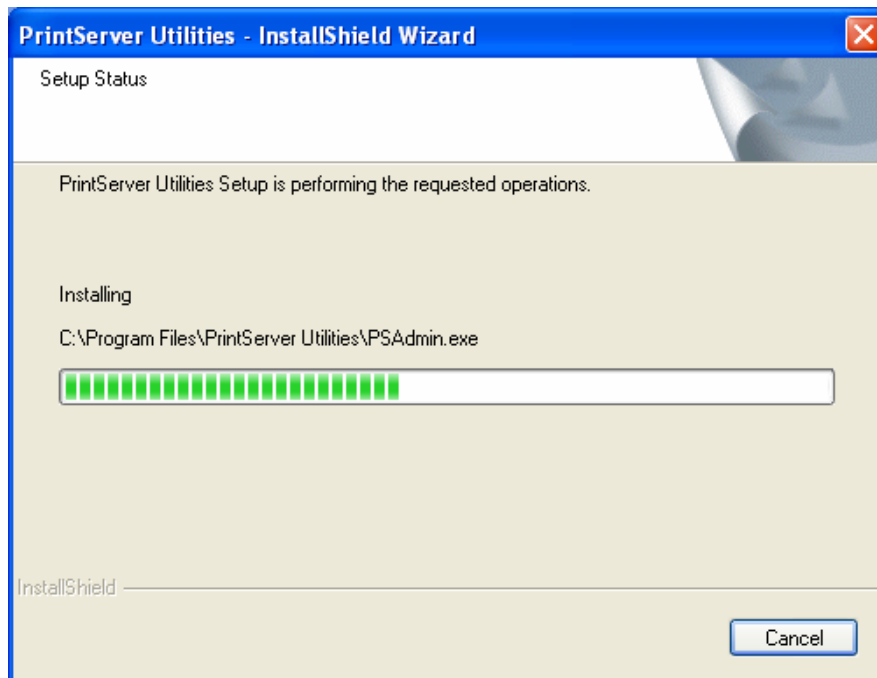
3.Click “Next” to install the utilities in the default folder or click “Change” to specify the destination folder where you would like to install the utilities.



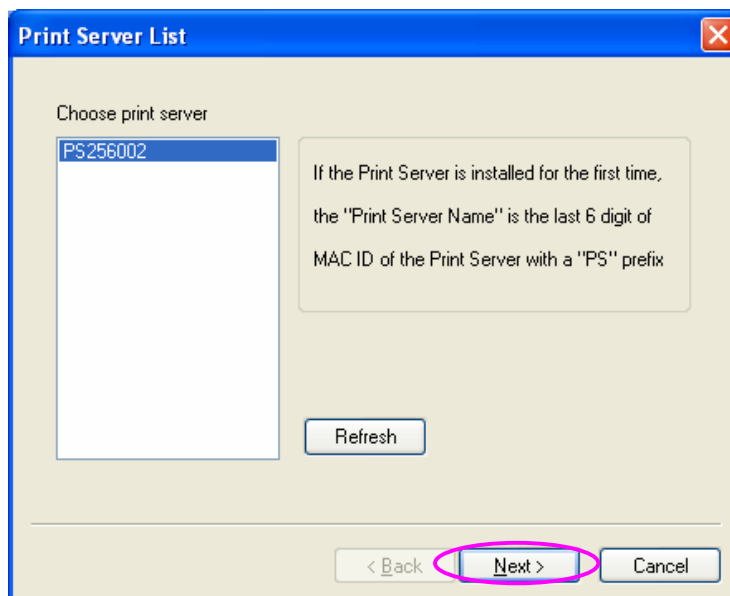
4. Select the components you want to install. It is highly recommended to install all provided components. Click "Next" to continue.



5. The system will start to install the utilities automatically.



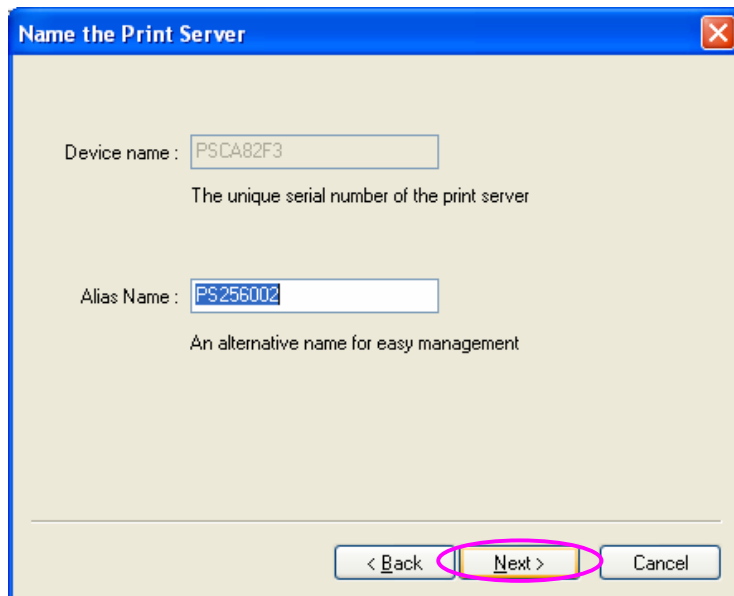
6. You have completed the installation phase and prepare to configure the Print Server. The “Choose Print Server” will list all Print Servers within the network. Select the Print Server you would like to configure and click “Next”.



NOTE 1: If this is the first time you configure the Print Server, the “Print Server Name” is the last 6-digit of MAC ID with prefix “PS”. Please check the MAC ID on the print server.

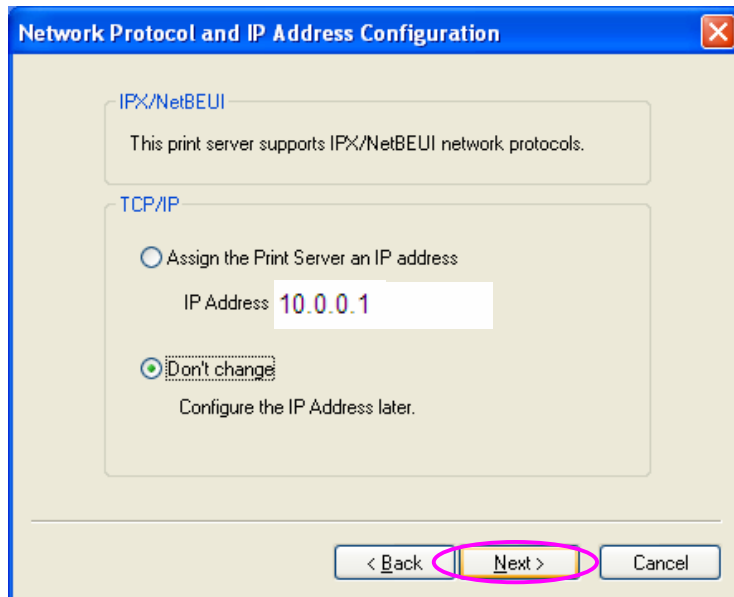
NOTE 2: The list can only display the devices from the same manufacturer.

7. Specify a recognizable name for the Print Server and click “Next”.

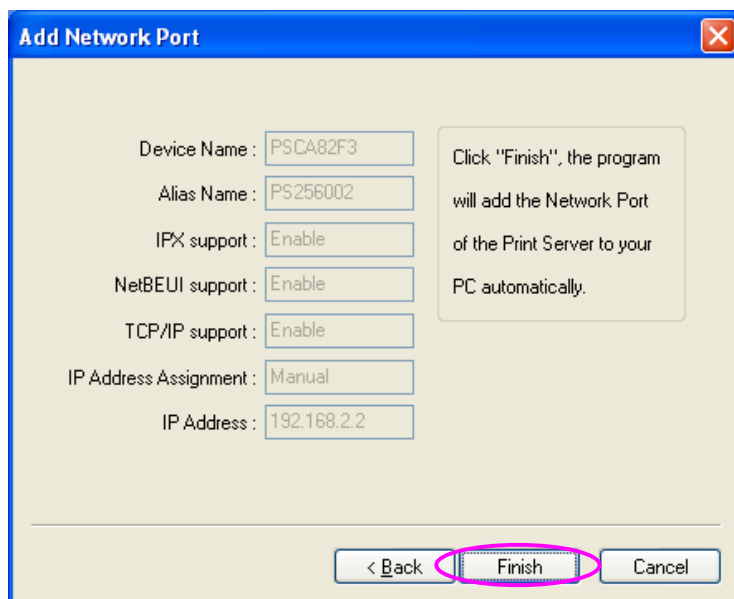


The screenshot shows a dialog box titled "Name the Print Server". It has two input fields: "Device name" with the value "PSCA82F3" and "Alias Name" with the value "PS256002". Below the "Device name" field is the text "The unique serial number of the print server". Below the "Alias Name" field is the text "An alternative name for easy management". At the bottom of the dialog box are three buttons: "< Back", "Next >", and "Cancel". The "Next >" button is highlighted with a pink oval.

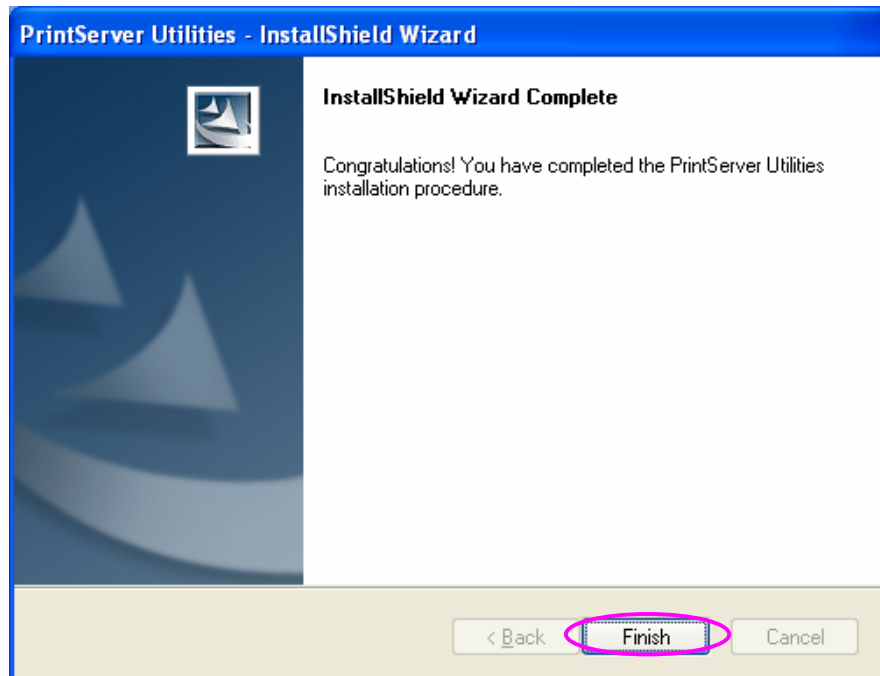
8. Specify the IP Address for the Print Server manually or click “Next” to keep default IP Address, i.e. 10.0.0.1



9. The configuration summary is displayed in the window. Now, you have completed the Print Server setup. Click “Finish” and your system will add network port of the Print Server to your PC automatically.



10. The Administrator Installation procedure is totally completed. Click “Finish”.



The Administrator Installation Program have executed the installation procedure that performs the following tasks:

Install all utilities and drivers to the administrator’s PC.

Configure the print server (including the print server name and network protocol)

Add the network port of the print server to the administrator’s PC.

If you want to print from this administrator’s PC to the print server, all you need to do is to perform Windows’ standard “Add Printer” procedure (please refer to Section 3.6).

3.4 Administrator Utilities

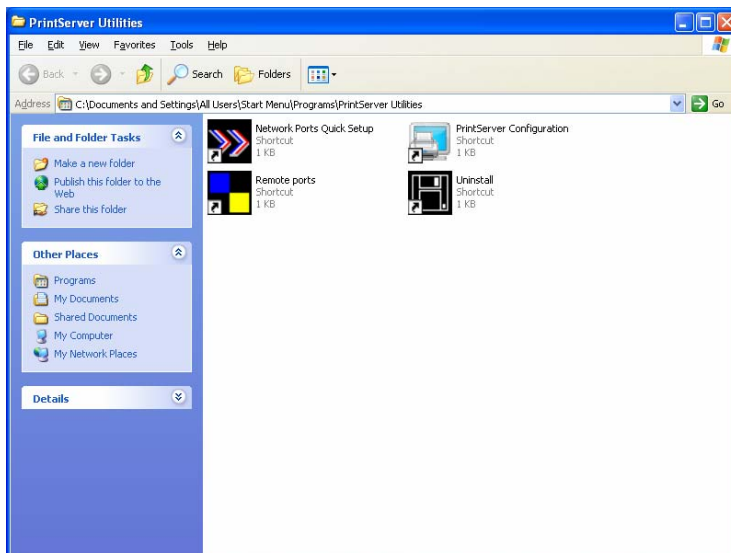
After Administrator Installation is completed, there will be four utilities in print server's Program folder.

Network Ports Quick Setup – Add the network ports of print servers within the network to your PC.

Print Server Configuration – Allows you to configure the print server's IP Address, network protocols and other advanced functions. Please refer to Chapter 7 for the detail instruction of the configuration.

Remote Ports – Add the network port of remote printer server to your PC.

Uninstall – Assistant for removing all installed administrator software.



3.5 Client Installation and Setup

*PLEASE FIND THE UTILITY MANUALLY FROM CD-ROM DRIVE'S ROOT DIRECTORY OR DOWNLOAD IT FROM EDIMAX WEBISTE. IF YOU HAVE ANY QUESTION PLEASE CHECK WITH EDIMAX LOCAL TECHNICAL SUPPORT TEAM.

The Client Installation Program is a wizard driven procedure which will perform the following tasks:

- Install client utilities and drivers into your PC.
- Automatically add all Network Ports to your PC.

The network port driver supports network protocol auto-detection. It will automatically select an available network protocol (TCP/IP, IPX or NetBEUI) of the client computer to connect to the print server.

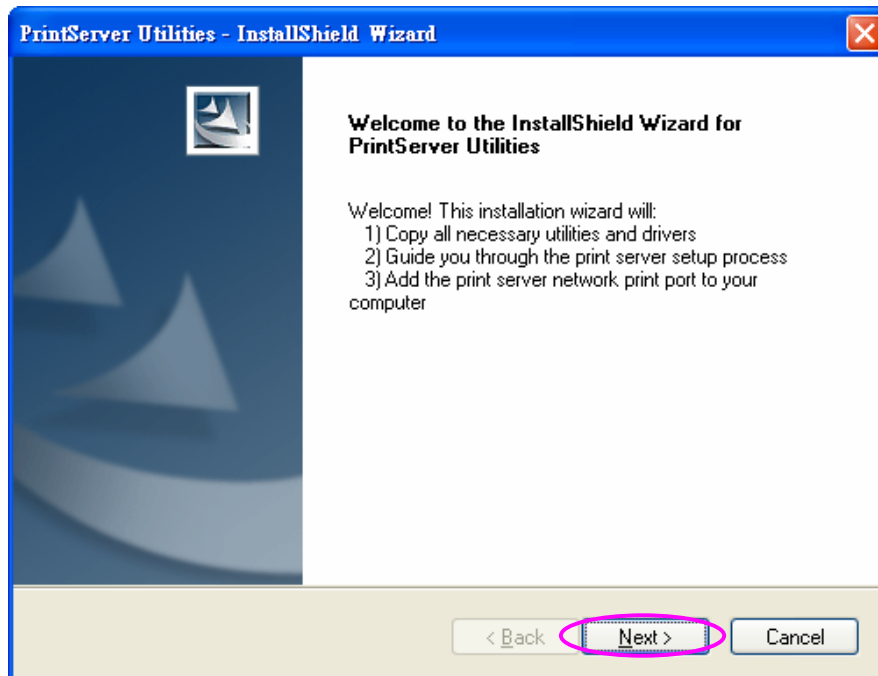
Since both the print server side and client side support multi-protocols, the configuration process of the client side is fully automatic.

After the installation, perform the standard "Add Printer" procedure and choose the print server's "Network Port" in the "Available Ports" list. You can test printing from the PC to the print server as your local printer.

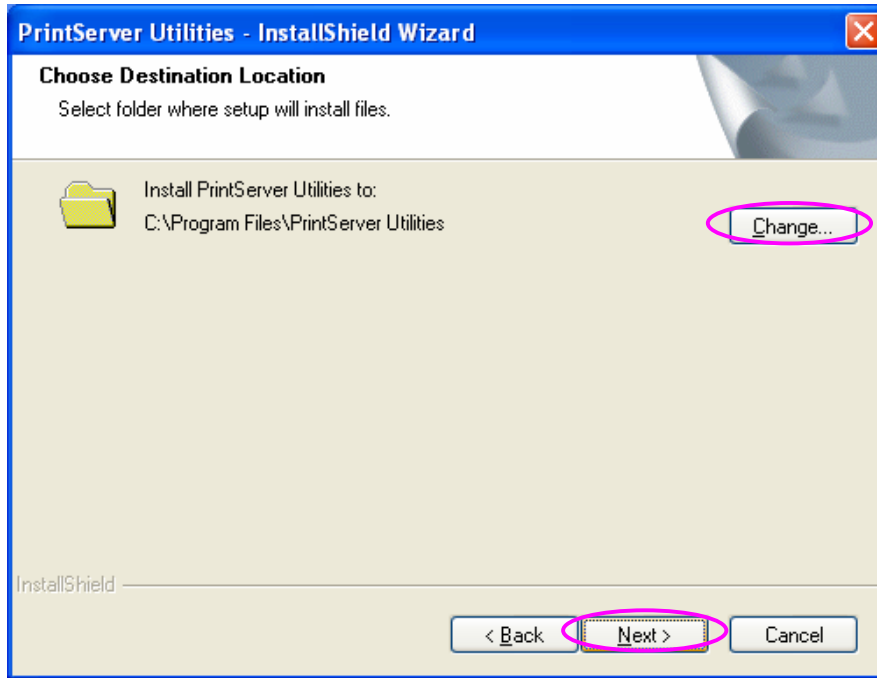
The Client Installation can be performed on Windows 2000/XP/2003/Vista with the same user interface. Before installation, please confirm that your PC has already connected to the network and installed at least one network protocol. Note that the following steps are running in Windows XP, for other Operation Systems the procedures are similar.

1. Please execute the Client installation software manually.

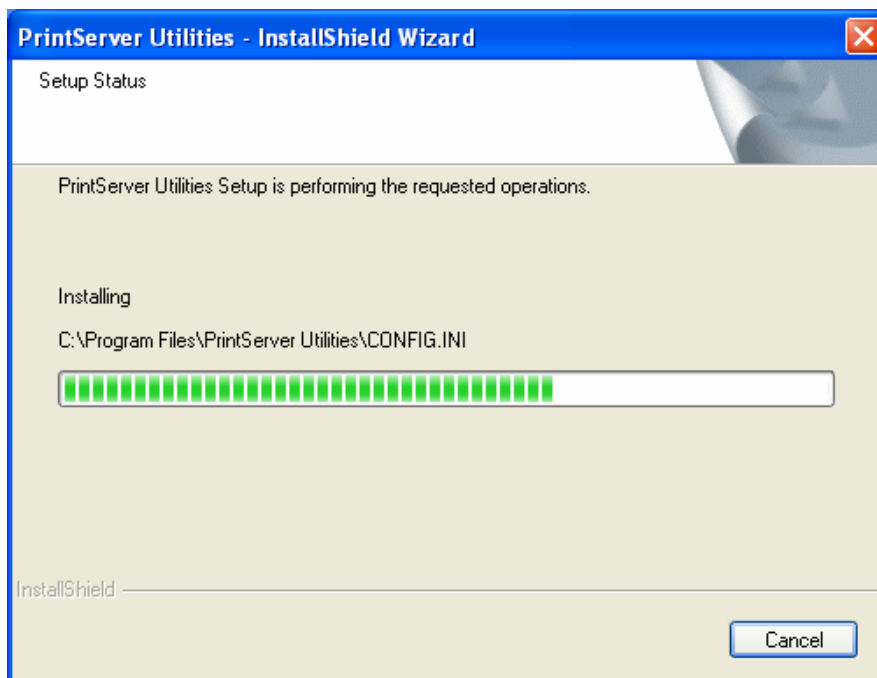
2.The “Print Server Utilities” window will be displayed. Click “Next”.



3.Click “Next” to install the utilities in the default folder or click “Browse” to specify the destination folder where you would like to install the utilities.

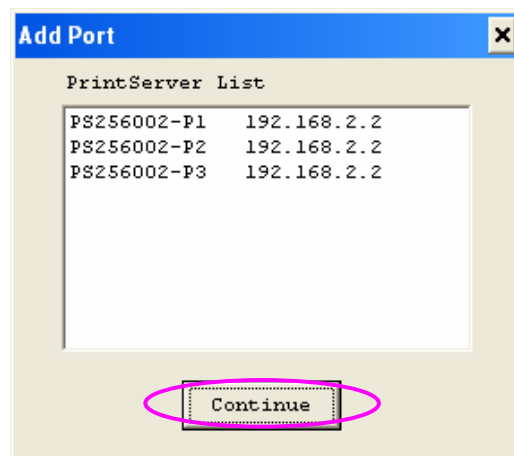


4. The system will start to install the utilities automatically.

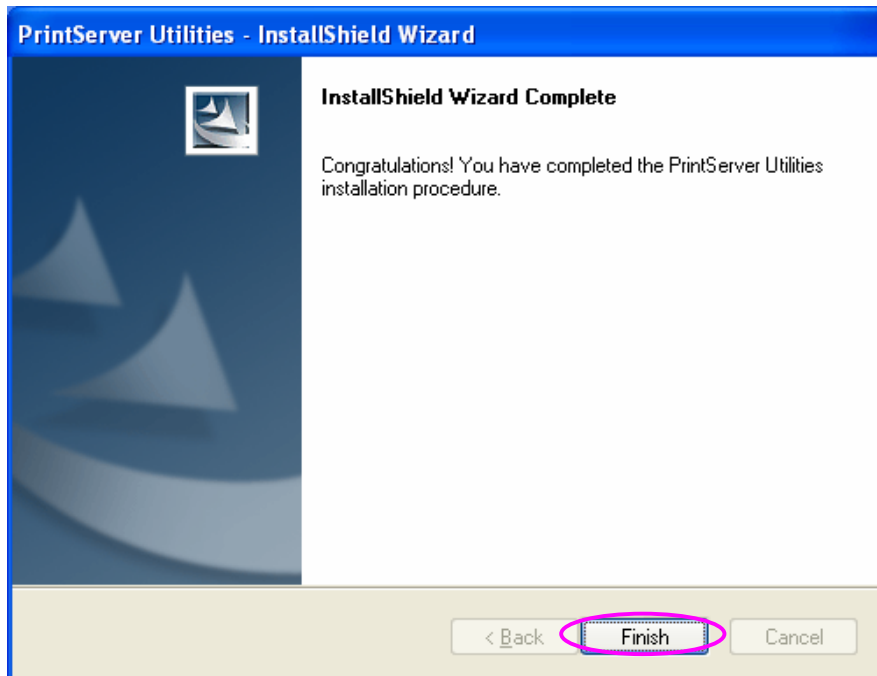


5. Now, the installation procedure is completed, you are ready to set up the client's computer. All network ports of the Print Servers detected on the network will be added to your PC automatically, click "Continue".

Note that if there are no print servers detected in the network currently, please click "Continue" to finish the installation. Please refer to Section 3.5.1 to add network ports of print servers manually.



6.The Client Installation procedure is completed. Click “Finish”.



After the installation, you have completed the following tasks:

Install all utilities and drivers to the client’s PC.

Add all the print server’s network ports of the network to the client’s PC.

You can then perform the Windows’ standard “Add Printer” procedure to add network printers to your PC. Please refer to Section 3.6.

3.6 Client Utilities

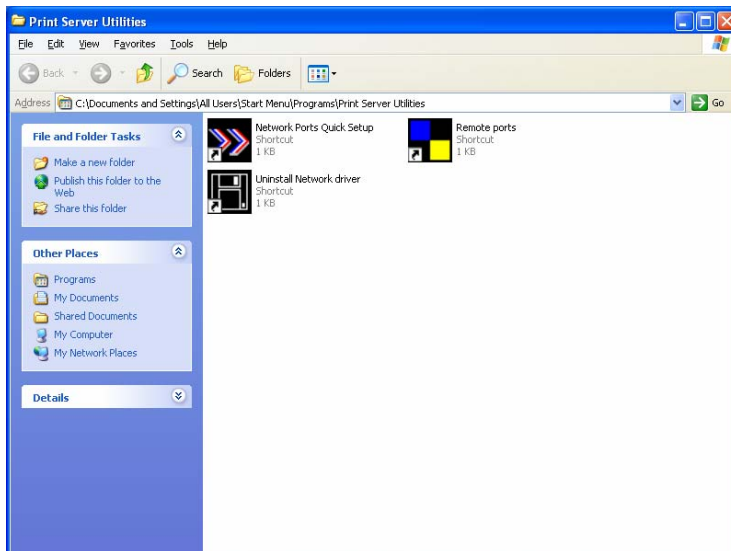
After Client Installation is completed, there will be three tools in print server's Program folder.

Network Ports Quick Setup

Remote Ports

Uninstall Network Driver

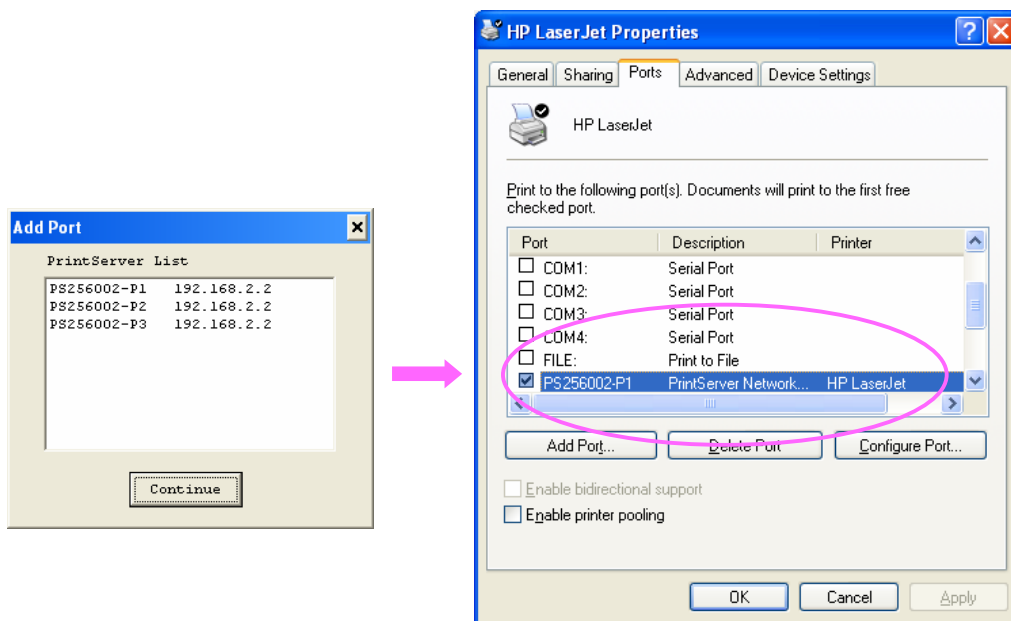
The Uninstall Network Driver will assist you in removing all installed client software. The other two tools are described as follows.



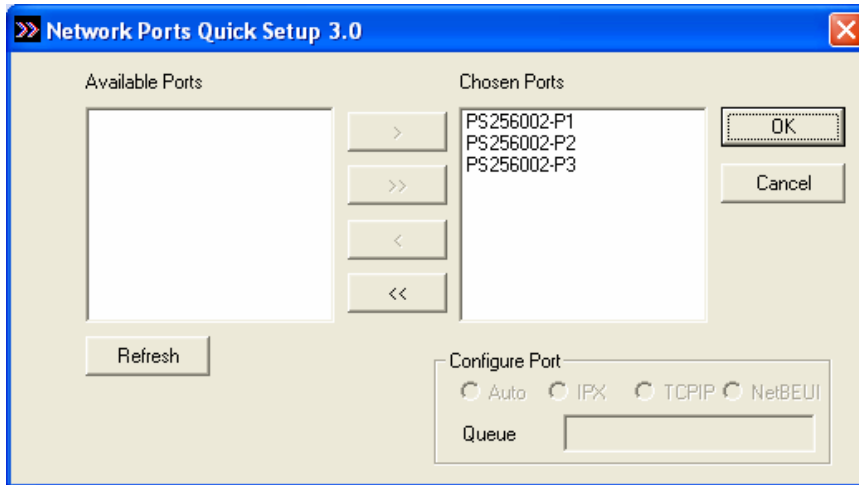
3.6.1 Network Ports Quick Setup

Network Ports Quick Setup Utility offers a very simple method to add or remove print server's printer port from the client's computer.

During the client's installation procedure, the system will automatically search for all print servers on the network, and add them into the printer ports of the client's computer (see below).



If you have just installed another new print server in the network, you must run this program first. This program will search for new print servers and allow you to add the new network printer port into client's computer conveniently. Perform the standard Add Printer procedure, then you can print directly to the printer through the newly installed print server.



Please be aware that Network Ports Quick Setup Utility can only detect and configure all print servers on the same network, it cannot search and configure print servers on other subnets across network segments. You must use Remote Ports Utility described in the next section to manage remote (across network segments) print servers.

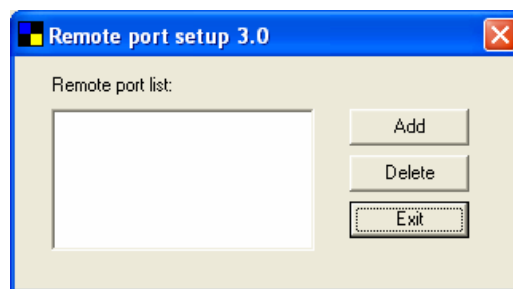
Select the network ports in the “Available Ports” list and click “>” to add ports. If you want to add all available ports, please click “>>”. To cancel some of the network ports or all ports from the “Chosen Ports” list, please click “<” or “<<”.

3.6.2 Remote Ports (Utility)

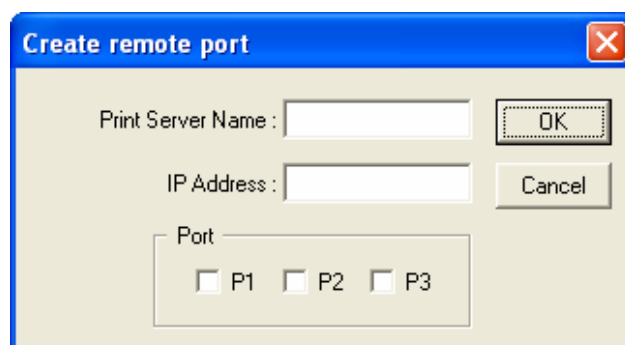
Remote Ports Utility offers a convenient way for you to manage and add printer port of the remote print server. From the assistant of this utility, you can print to other print servers outside the subnet across network segment. However, please note that this function only supports TCP/IP network protocol.

Please follow the procedures described below:

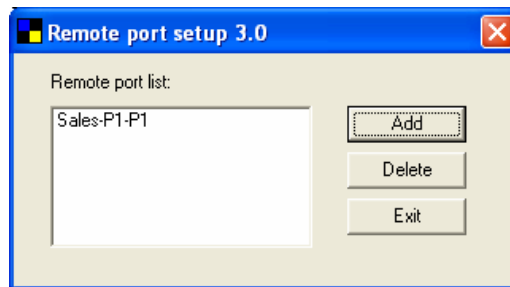
Step1. Run Remote Ports Utility. Clicks “Add” to add a remote print port.



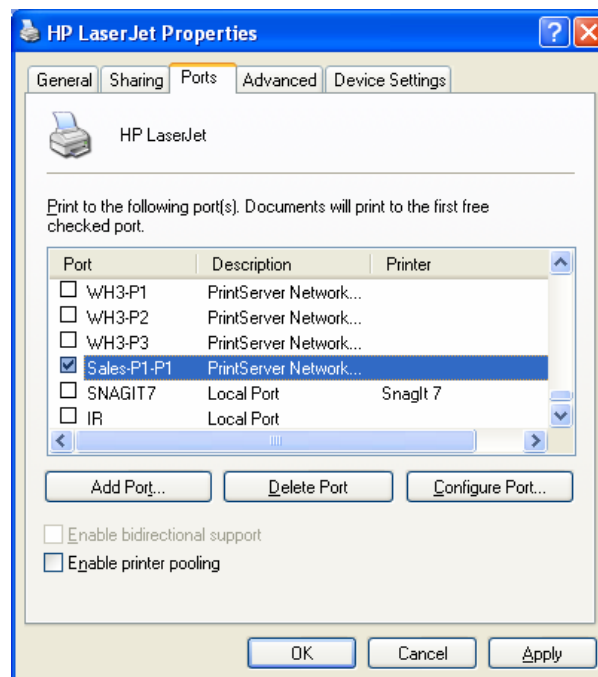
Step2. Enter print server's name, IP address, select used ports, and enter LPR queue name of each port. Click “Ok”.



Step3. The new remote print port is displayed as follows.



In order to use the remote printing function, you will have to proceed with normal Add Printer procedure and select your printer port as the newly added remote printer port.



3.7 Windows Add Printer Procedure

After adding a “Network Port” of the print server to your PC by Administrator or Client Installation Program, you can follow the procedures described in the following sections to add printer to the Windows.

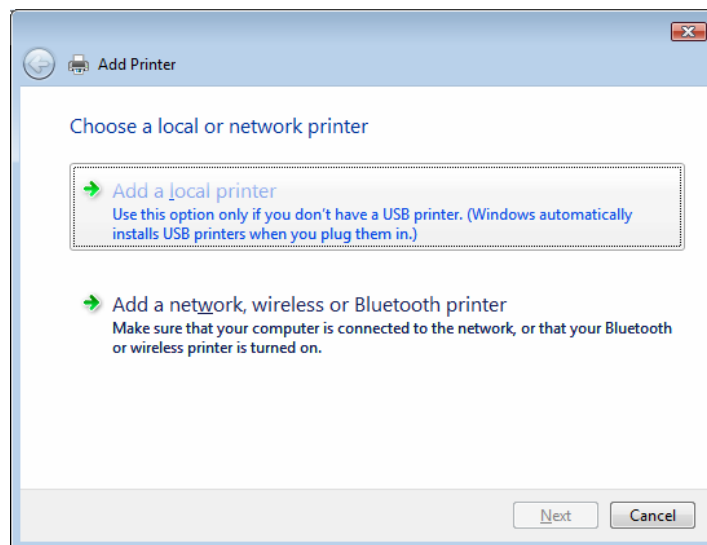
3.7.1 Windows Vista

The following “Add Printer” steps are running in Windows Vista.

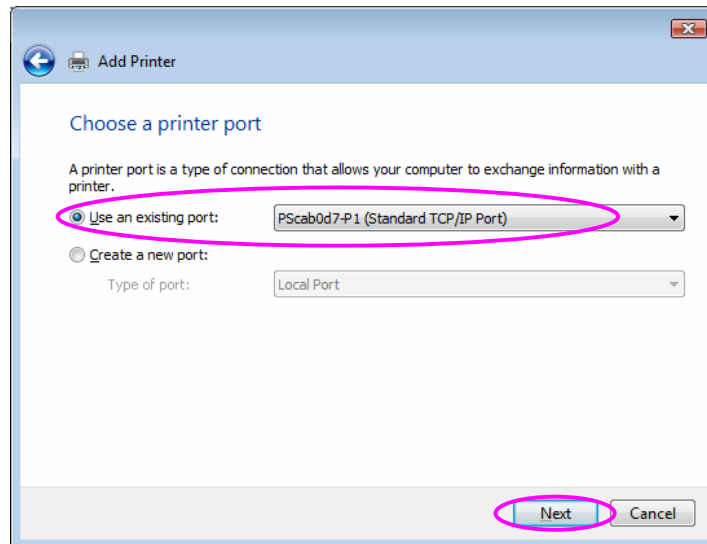
Click “Start”, select “Settings\Printers”.

Click “Add a Printer”.

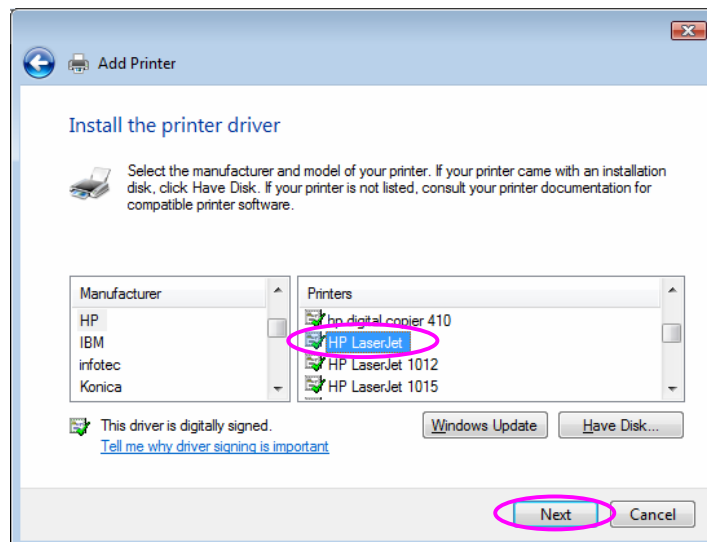
The “Add Printer” wizard is displayed. Select “Add a local printer”.



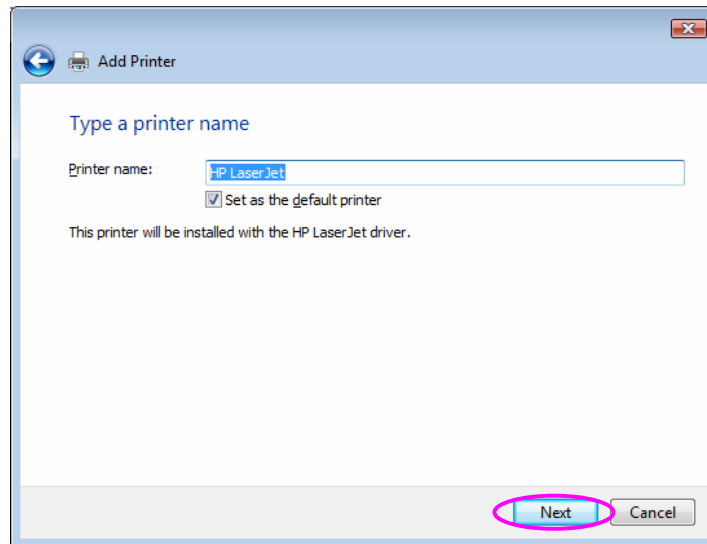
Choose the suitable printer port which was created by the installation process and click “Next”.



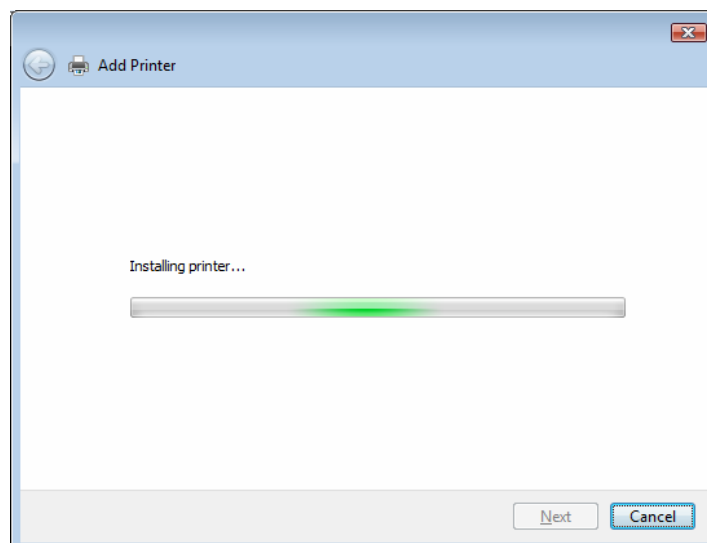
Select the printer manufacturer and the printer model and click “Next”. If your printer is not in the list, click “Have Disk...” to install the driver of the printer. After installation, the printer model will be added to the list.



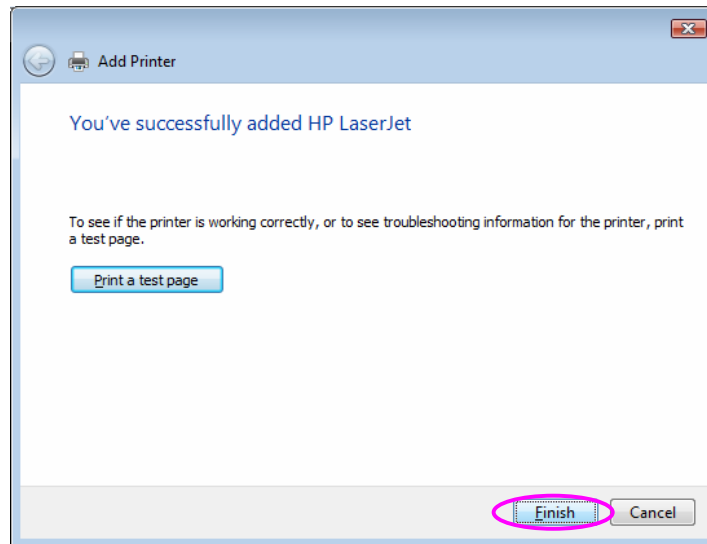
Name your printer and set the default printer, click “Next”.



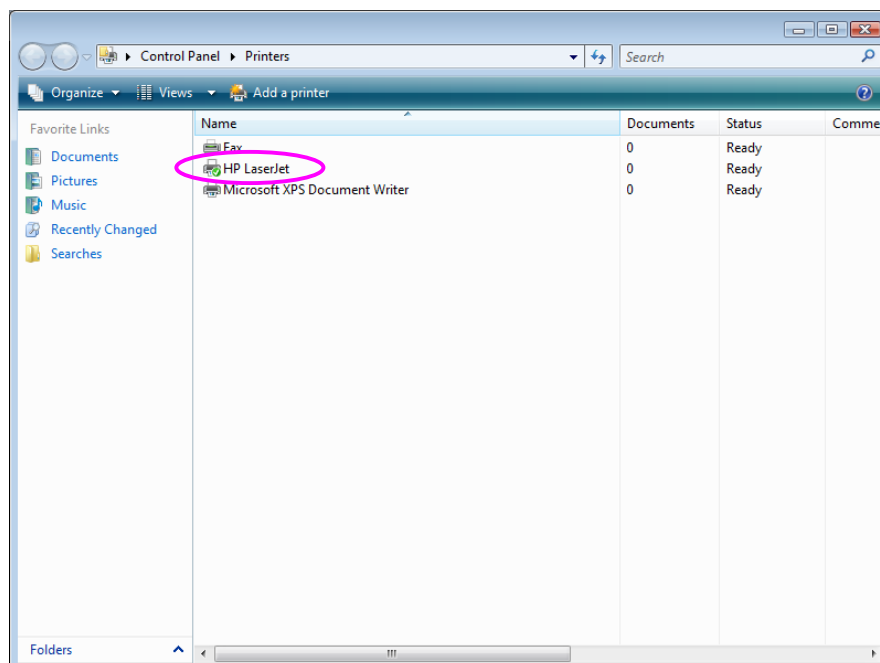
The printer drivers are being installed.



It is recommended to print a test page. Click “Finish”.



The printer is added to “Printers” page, you have added the printer to your computer successfully. Now you can start to print from your computer to the print server.



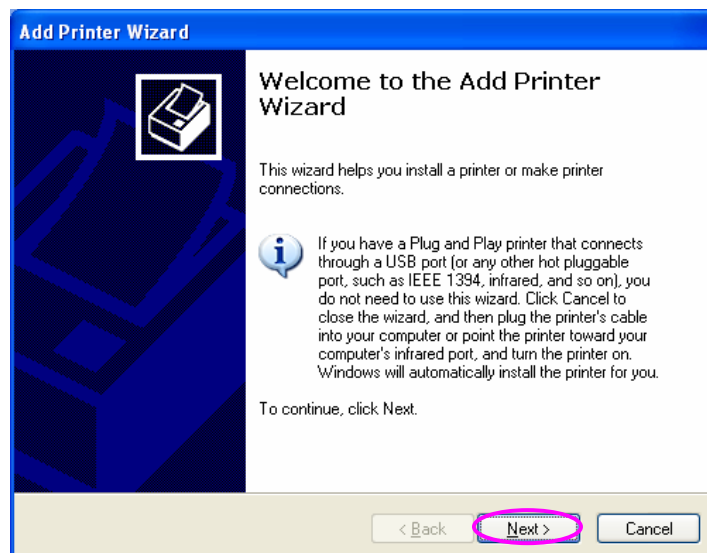
3.7.2 Windows XP

The following “Add Printer” steps are running in Windows XP, the steps in other Operating Systems such as Windows 98SE/Me/2000 are similar.

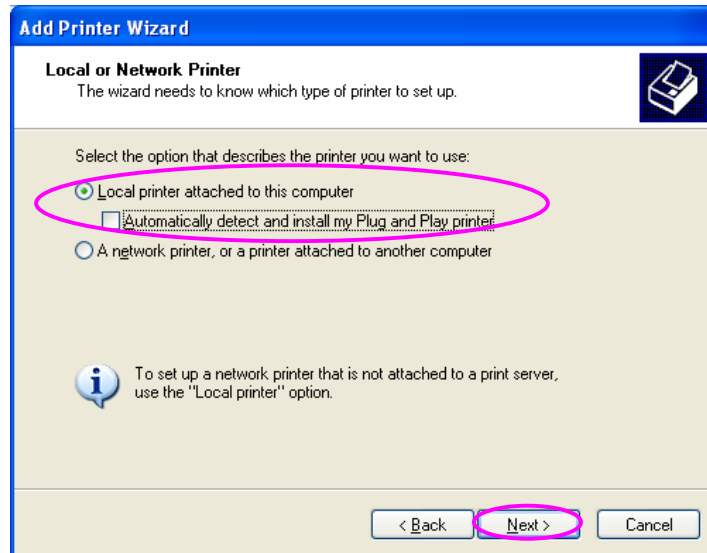
Click “Start”, choose “Settings” and select “Printers and Faxes”.

Click “Add a Printer”.

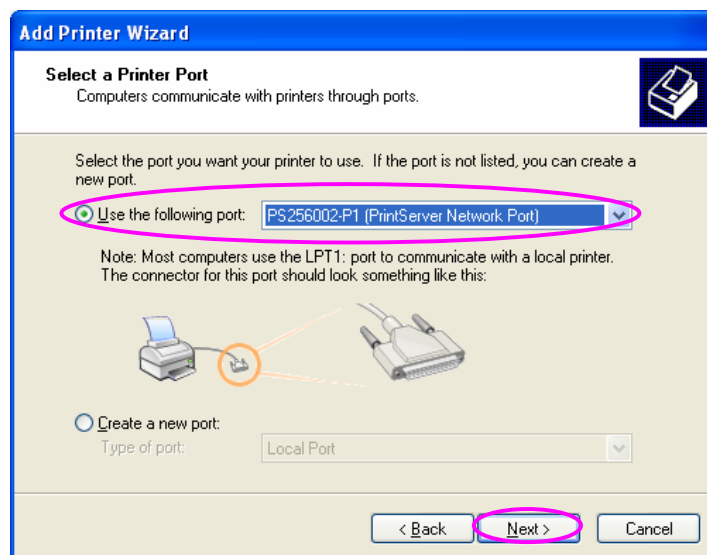
The “Add Printer Wizard” is displayed. Click “Next”.



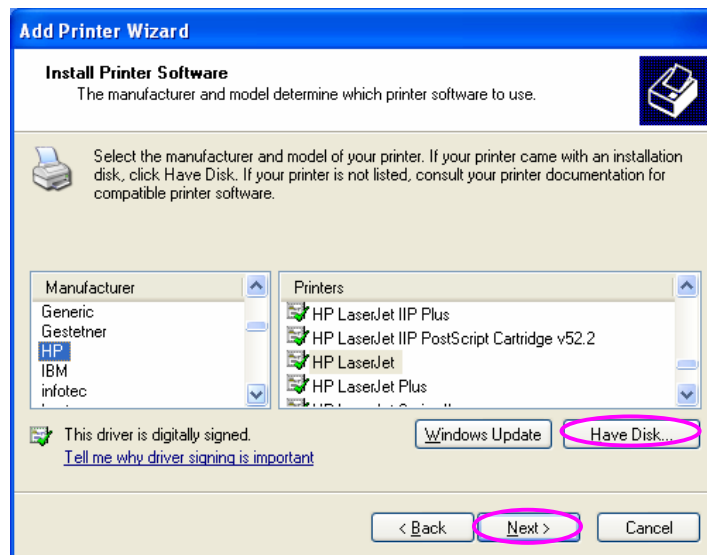
Select “Local printer attached to this computer” and make sure that “Automatically detect and install my Plug and Play printer” is not selected. Click “Next”.



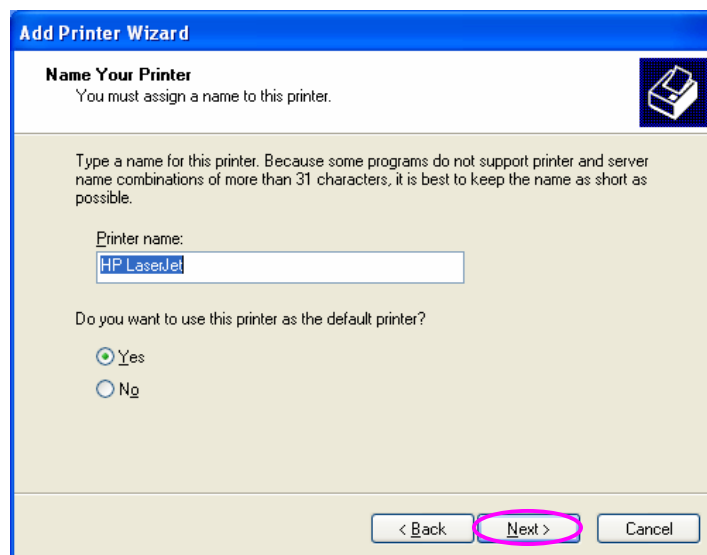
Choose the suitable “Print Server Network Port” which was created by the Administrator Installation or Client Installation process and click “Next”.



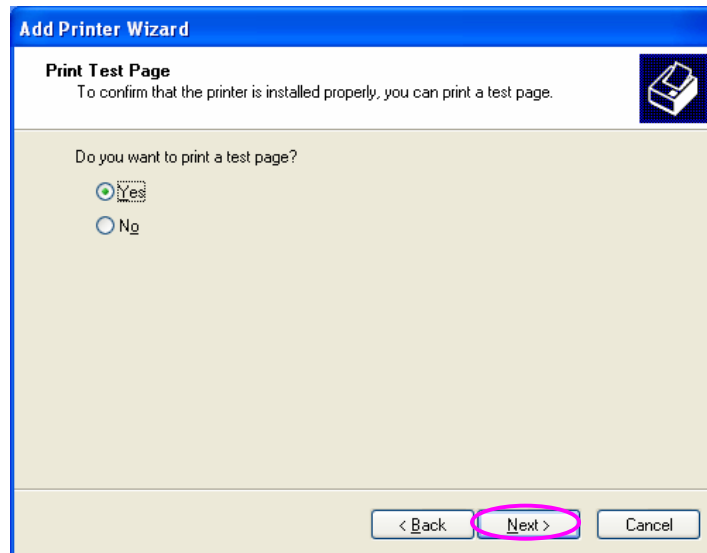
Select a suitable printer manufacturer and the printer model and click “Next”. If your printer is not in the list, click “Have Disk...” to install the driver of the printer. After installation, the printer model will be added to the list.



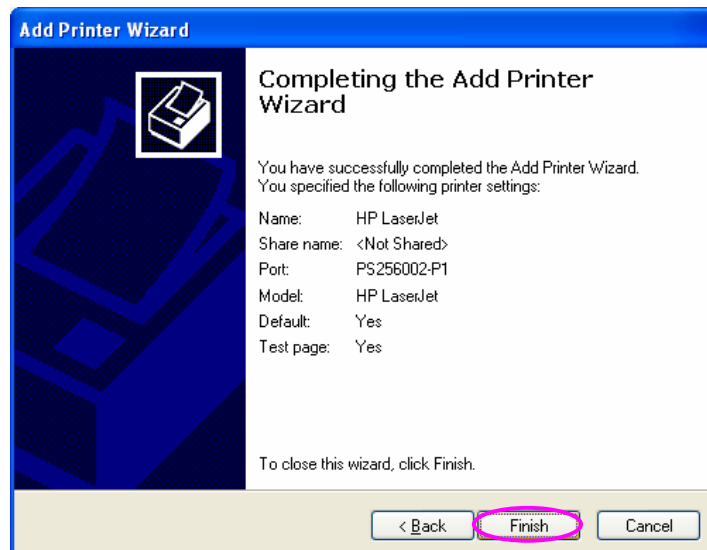
Name your printer and setup the default printer, click “Next”.



Choose to print the test page or not. It is recommended to print a test page. Click “Next”.



You have added the printer to the PC successfully. The information of the printer is displayed in the windows. Click “Finish”.

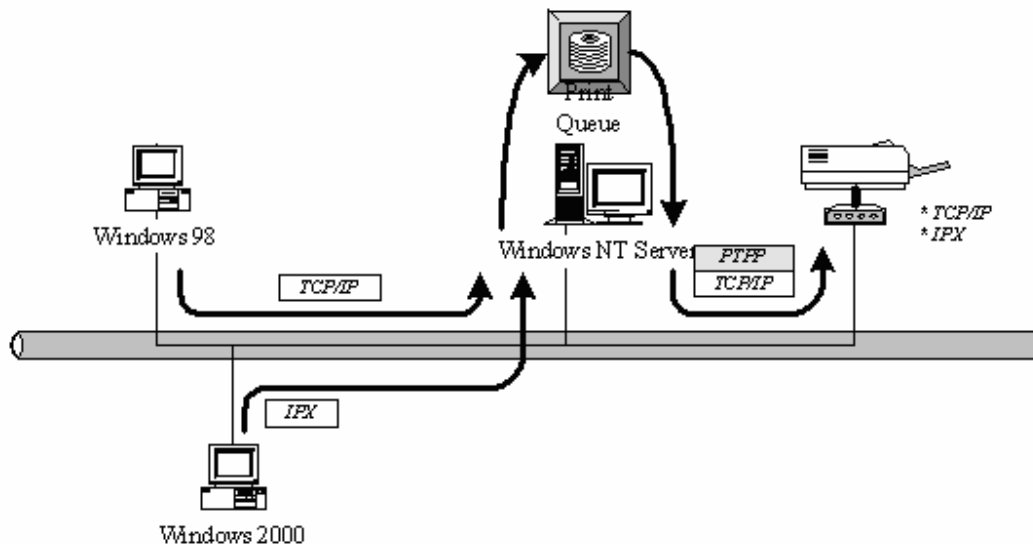


Now you can start to print from your PC to the print server.

4. Windows NT/2000/2003 Network

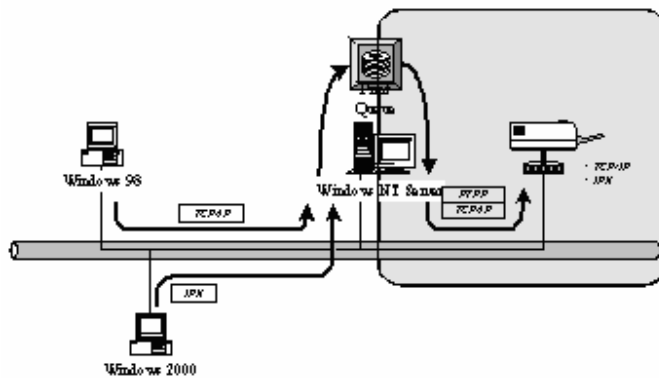
4.1 System Architecture

In Windows network environment, other than the Peer-to-Peer network printing architecture described in the previous chapter, we also offer the Server-Based Printing architecture for Windows NT/2000/2003 server. Only one Windows NT/2000/2003 is required to have Windows PTPP (Peer-to-Peer Printing) driver installed and share the printing service on the network. Other network users can simply connect to the server and access the shared printer (see below).



4.2 Windows NT/2000/2003 Server Installation and Setup

Please follow the procedures described below for installation and construct a peer-to-peer connection (PTPP) between Windows NT/2000/2003 Server and Print Server.



Step1.

If this is your first time installing print server, please install the administrator software on Windows NT/2000/2003 server first. Refer to section 3.2 for installation instructions.

If your network has already installed a working print server and your Windows NT/2000/2003 server has not yet installed the PTPP driver, please install the client software. Refer to section 3.4 and 3.5 for installation instructions.

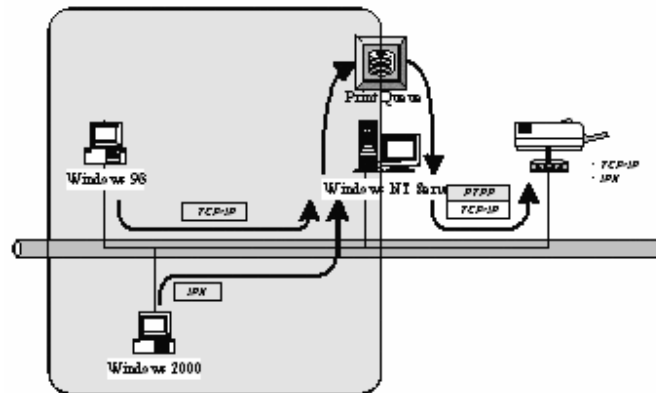
Step2.

Please add/configure the Peer-to-Peer Printing of the Windows NT/2000/2003 network printer and verify that you can print from Windows NT/2000/2003 to the print server by the installed PTPP driver.

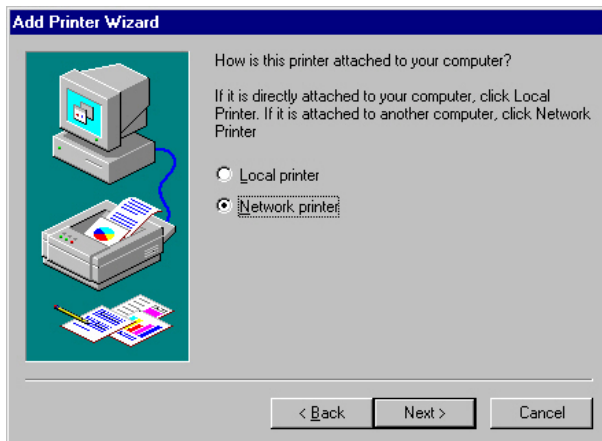
Step3.

Share the above server's printer to the network by performing the standard Windows printer sharing process.

4.3 User Installation and Setup



After server side's installation is completed, client side will be able to find the server's shared printer in Network Neighborhood. You only need to perform Window's standard **Add New Printer** procedure, select "**Network Printer**" shown in the screen below, and complete the configurations afterwards to access the shared printer.

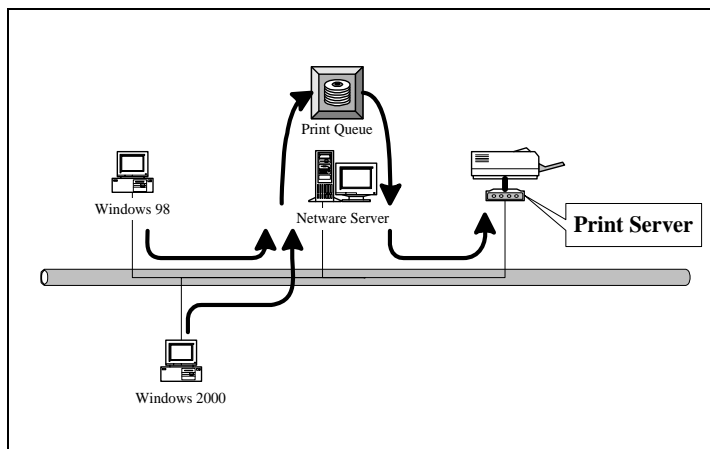


5. NetWare Network

5.1 System Architecture

We implemented NetWare printer sharing functionality into the print server itself, thus allowing one or more printers attached by a print server to be connected to the network. We have developed the print server to support NetWare print server.

Embedded print server, which emulates the “queue management functionality” of NetWare print server, PSERVER program running on the NetWare server. A user first prints a job at a workstation, the job is routed to a NetWare server, the NetWare server stores the job in a print queue and then the print server gets the print job from the queue to printers.



Compare with NetWare printing functionality, the advantages of embedding the NetWare network printing functionality in the print server include:

Installation is easier and quicker.

Network management is easier.

Printing performance is enhanced.

Relieve NetWare file server's burden.

Relieve the need of a workstation running the remote printer utility.

Improve productivity by locating the printer near the workgroup.

Each print server should log into a NetWare server before servicing the print jobs. Each print server will occupy a user account with which it can log into the NetWare server.

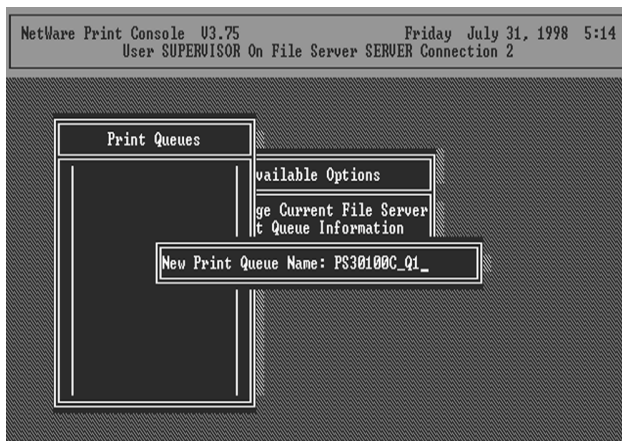
5.2 NetWare 3.x/4.x/5.x Installation & Setup

Once your print server is connected to your Ethernet network, you can set it up for use with your networking software.

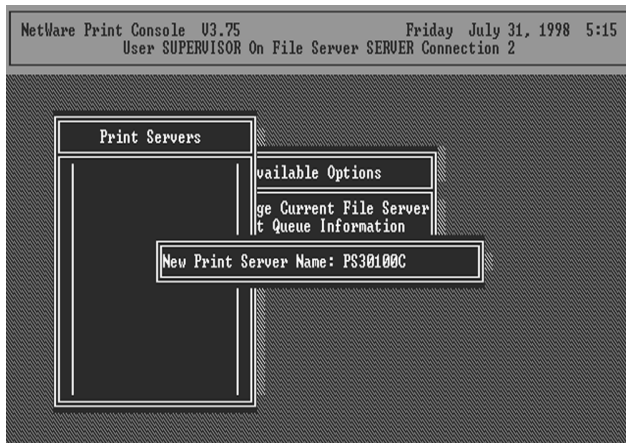
5.2.1 Installation Using PCONSOLE

5.2.1.1 Configuring as Print Server Mode

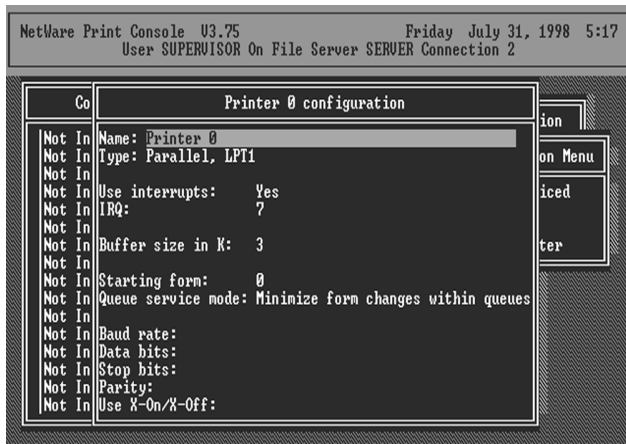
1. Run the NetWare PCONSOLE program.
2. Change the current file server, if necessary, using the Change Current File Server menu selection.
3. Choose the Print Queue Information menu selection.
4. Press the Insert key to add a new print queue.
5. Type in a print queue name, such as "PQ" or "Q1".



6. You have now successfully created the print queue that your print server will serve. Press the Escape key until the Available Options main menu is displayed.
7. Select Print Server Information.
8. Press the Insert key to add a new NetWare print server object. The print server name can be identical to the PSxxxxxx name printed on the label of the print server.



9. Press Enter to select the newly created print server.
10. Select Print Server Configuration.
11. Select Printer Configuration.
12. Select Printer 0 (or Printer 1, Printer 2), and press Enter, then select LPT1 (or LPT2, LPT3) in the Type field. If your print server is with only one port, you do not need to configure this Type field.



13. Press Escape, and answer Yes to the Save Changes question.

14. Select Queues Serviced by Printer, then select Printer 0 (or Printer 1, Printer 2) and press Enter.

15. Press *Insert* and add your newly created print queue to the list of queues serviced by the printer. Enter a priority number for the queue service, or press Enter to accept the default.



16. Repeatedly press Escape to exit the PCONSOLE program.

17. Reset the print server to have the changes take effect.

NOTE: If the print server you have is with multiple printer connectors, you may create multiple print queues and printer objects.

Your print server should now be ready to use. You should be able to redirect printing to your print server using a CAPTURE command such as the one shown in the previous section.

6. UNIX System Network

6.1 Introduction

The print server is available for TCP/IP printing by Unix LPD (Line Printer Daemon) protocol. The LPD protocol originated with Unix release is based on the BSD version of Unix and supported under most versions of Unix.

This chapter explains how to configure the print server for TCP/IP operation, and how to modify configuration files on your Unix system to allow printing to the print server. The configuration examples in this manual follow the syntax for BSD based Unix systems. Please refer to the related system documentation for the correct syntax of your systems.

To configure the print server for LPD printing, perform the procedures below:

1. Enable Print Server's TCP/IP Support.
2. Set up Print Server's IP address.
3. Verify Print Server's IP Address.
4. Configure remote LPD printing on the host.
5. Print a test page.

In the next sections, we will describe these five procedures step by step.

6.2 Enable Print Server's TCP/IP Support

The default configuration of the print server is with TCP/IP support enabled. Anyway, you can configure the print server to enable TCP/IP support using the configuration program.

6.3 Setup Print Server's IP Address

The print server must have a unique IP address in order to be recognized by the network.

You can set up the IP address on the various Unix systems using any one of the following methods:

1. ARP & Ping Assignment (Recommend for Unix)
2. DHCP (Dynamic Host Configuration Protocol)
3. BOOTP (Bootstrap Protocol)
4. RARP (Reverse Address Resolution Protocol)

The print server will use the last three methods to obtain its IP address automatically if its IP address is configured as Auto (0.0.0.0).

6.3.1 ARP & Ping Assignment

You can use ARP and Ping commands with a web browser to complete print server's IP address setting.

Parameters for the commands are as follows:

```
arp -s <IP Address> <Ethernet ID>
```

```
ping <IP Address>
```

For example, a print server with the following configuration:

```
Node ID: 0000B4010101
```

(the Node ID is printed on the rear side of the print server)

Assign IP address: 203.66.191.12

```
arp -s 203.66.191.12 00-00-B4-01-01-01
```

```
ping 203.66.191.12
```

At the mean time, print server's IP will "temporarily" be set to 203.66.191.12 (will restore after reboot). Therefore, you need to run your web browser to set a permanent IP address (refer to section 8.3.7 for detailed IP configuration).

6.3.2 DHCP

There are many Unix systems that support DHCP protocol, and the procedures to configure the DHCP server database are different. This manual does not describe the DHCP server configuration on the Unix systems. It is highly recommended that the DHCP server should be located on the same network as the print server.

6.3.3 BOOTP

If you have the BOOTP daemon, `bootpd`, running on your UNIX system that is accessible by the print server, you can use the BOOTP protocol to set up the IP address of the print server. We recommend that the BOOTP server should be located on the same subnet as the print server. If you use Network Information Services (NIS) in your system, you may need to rebuild the NIS map with the BOOTP services before doing the following BOOTP configuration. To rebuild the NIS map, please refer to your system documentation.

To configure the IP address data for the BOOTP server, you will need to log in the host of BOOTP server as the superuser (`root`). Perform the following steps to add address entries,

1. Optionally, assign a name corresponding to the print server's IP address. You can add this address to the `/etc/hosts` file, by adding a line such as:

```
203.66.191.12      pserver
```

2. Add an entry to the host's `/etc/bootptab` file, similar to the following:

```
hostname:\
:ht=1:\
:ha=print_server_ethernet_address:\
:ip=print_server_ip_address:
```

Lines should be indented with tabs.

Where hostname is the device name of a print server, the ht=1 tag specifies the hardware type is Ethernet, the ha= tag specifies the Ethernet address of a print server, which is the Node ID located on the print server. The ha tag must be preceded by the ht tag. The ip= tag should correspond to the IP address you want to assign to the print server.

For example, a print server with the following configuration:

Node ID: 0000B4010101 (this implies Ethernet
address is 0000B4010101),

IP address: 203.66.191.12

The entry for this print server in the /etc/bootptab file should be:

```
PS010101:\  
    :ht=1:\  
    :ha=0000B4010101:\  
    :ip=203.66.191.12:
```

6.3.4 RARP

The procedure below enables the RARP daemon running on your system to respond to a RARP request from the print server and to assign the IP address to the print server.

1. Log in the host of RARP server as the superuser (root).
2. Assign a name corresponding to the print server 's IP address. You can add this address to the /etc/hosts file, by adding a line such as:

```
203.66.191.12          pserver
```

3. Add the Ethernet address and the host name for the print server to the /etc/ethers file, by adding a line such as:

```
00:00:B4:01:01:01 pserver
```

Where the Ethernet address of the print server is the Node ID located on the print server.

4. If your system uses Network Information Services (NIS), you will need to make changes to the NIS host and ethers databases.
5. Check if the RARP daemon is running using the ps and grep commands. If the RARP daemon is not running on your host, type “rarpd -a” to run the RARP server.

6.4 Verify Print Server's IP Address

To verify that your print server is responding to the newly assigned IP address using a PING command:

```
ping ip-address
```


6.5 Configure Remote lpd Printing on the Host

The procedure you use to configure your Unix host(s) to allow printing to your network remote print server varies between different varieties of Unix. The procedure below can be used for Unix variants that are related to BSD Unix, such as SunOS or Linux. For other versions of Unix, consult your system documentation, keeping in mind that:

1. The print server should be treated as a BSD networked print server host.
2. The host name should be the name (or IP address) that you have assigned to the print server.
3. The printer name (or queue name) on the remote host should be lpt1, lpt2 or lpt3, the name of the printer port on the print server.

You will need to perform the tasks below, logged in as the superuser (root). To configure your Unix host for printing,

1. Optionally, assign a name corresponding to the print server's IP address. You can add this address to the `/etc/hosts` file, by adding a line such as:

```
203.66.191.186      pserver
```

2. Create a spool directory for the printer in the same directory where spool directories are normally kept on the machine, such as `/var/spool` or `/var/spool/lpd`:

```
mkdir /var/spool/lpd/pserverd
```

```
chown daemon /var/spool/lpd/pserverd
```

```
chgrp daemon /var/spool/lpd/pserverd
```

```
chmod 775 /var/spool/lpd/pserverd
```

3. Add an entry to the host's /etc/printcap file, similar to the following:

```
printer-name:\  
  
    :lp=:\  
  
    :rm=203.66.191.186:\  
  
    :rp=lpt1:\  
  
    :lf=/var/spool/lpd/pserverd.log:\  
  
    :sd=/var/spool/lpd/pserverd:\  
  
    :mx#0:
```

Lines should be indented with tabs. More than one printer name can be used, with variants separated by vertical bars (name1|name2).

The rm= entry should correspond to the IP address you have assigned to the print server. You can also use a host name if you have assigned one in the /etc/hosts file.

The sd= entry should correspond to the spool directory you created in the previous step.

The `rp=` entry should correspond to the port name of the remote printer. The values should be one of `lpt1`, `lpt2` or `lpt3` depends on the printer port.

The print server should now be available for printing from your Unix host.

6.6 Print a Test Page

To print to the print server, you can use the `lpr` command:

```
lpr -Pprinter-name file ...
```

or, you can use the `lp` command on SCO Open Server:

```
lp -d printer-name file ...
```

Where `printer-name` is one of the names for the printer in the `/etc/printcap` file, which you created in the previous step.

Consult your system documentation for more information about printer configuration and administration and about `lpr` and other printing commands.

7. Configuration Utility

7.1 Introduction

This chapter introduces print server's system configuration utility in Windows environment. This utility is automatically installed during Windows Administrator Utility installation procedure - refer to section 3.2 and 3.3.

This utility provides the most complete management and configuration functions on the print server side. This utility only provides configuration functions for print server itself; it does not include configuration functions for client side or other file server or NetWare server in the network environment.

The Configuration Utility provides the following configuration and management functions:

Search Print Server: Search All Available Printer Servers on the Network.

Print Server Status: Display Print Server Network Status.

General Configuration: General Information of print server.

TCP/IP Configuration: IP Address and DHCP Server Configuration.

NetWare Configuration: NetWare Printing Configuration.

AppleTalk Configuration: AppleTalk Protocol Setting.

SNMP Configuration: SNMP Information Configuration.

SMB: Configure the SMB Group Name.

System Configuration: Print Server Network Ability Setting and Firmware Upgrade.

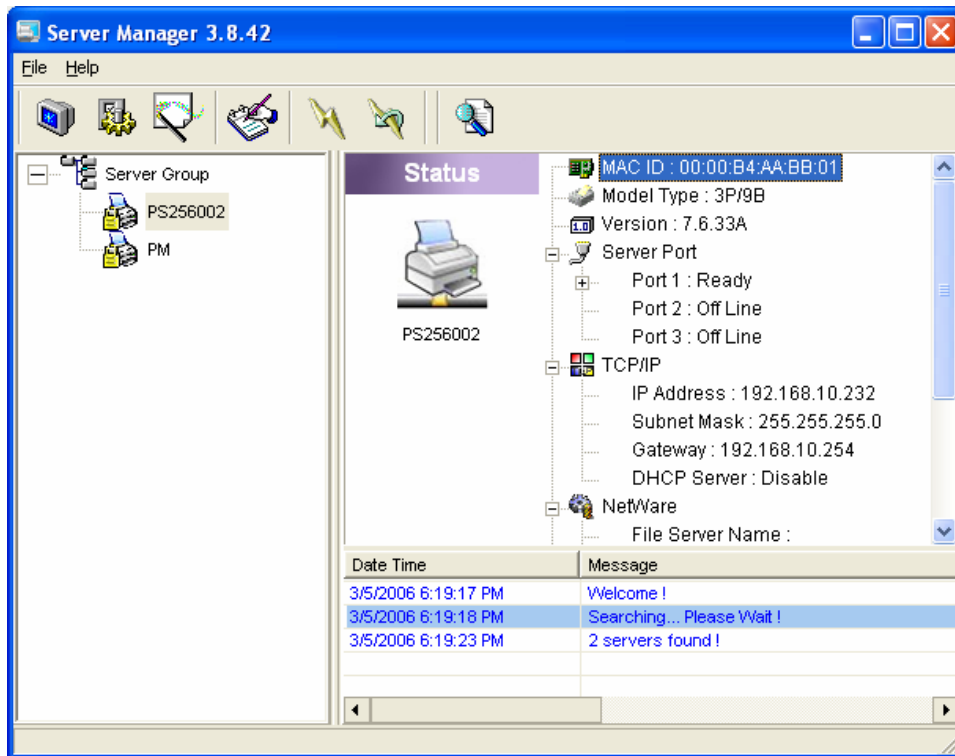
E-Mail Printing: E-Mail Printing configuration. Please refer to Chapter 9.


Setup Wizard: Guide You Through All the Settings.

Report: List the Status of All Available Print Servers on the Network.

We will explain each function separately in the following section.

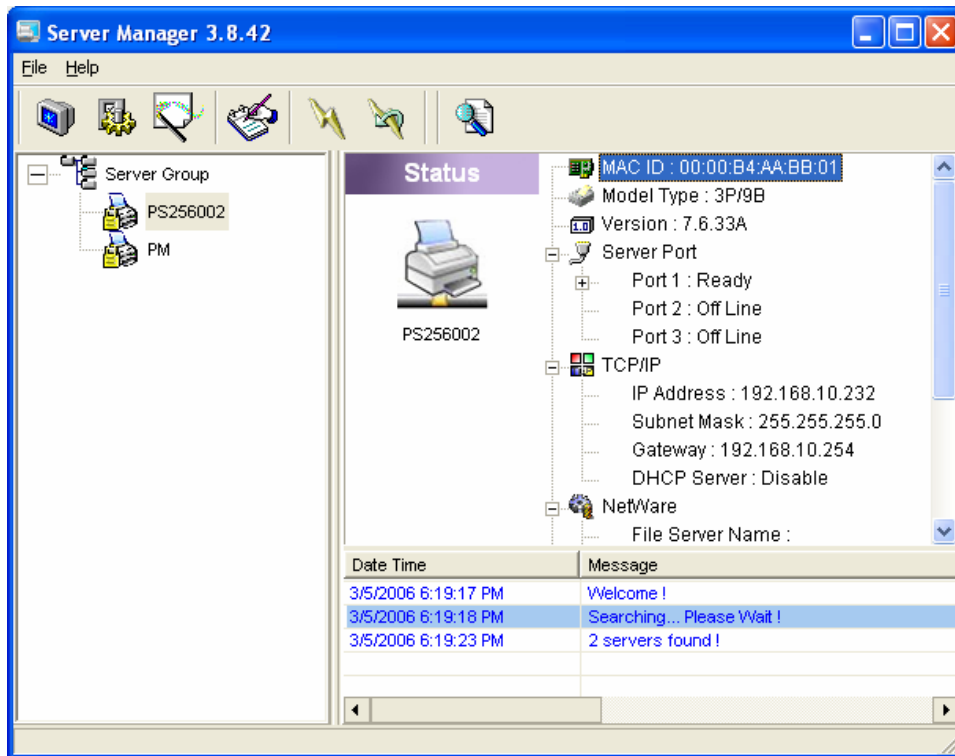
7.2 Search for All Available Print Server




Every time when you run print server's configuration utility, click the "Search" icon  on the tool bar. The configuration utility will delay for several seconds because the utility is using system's available network protocols to search for all print servers on the network. All available print servers will be listed under "Print Server Group" on the left side of the window.


You must select the print server you would like to configure from the list. The system will, at the same time, display the selected print server's status on the right side of the window.


7.3 Status of Print Server



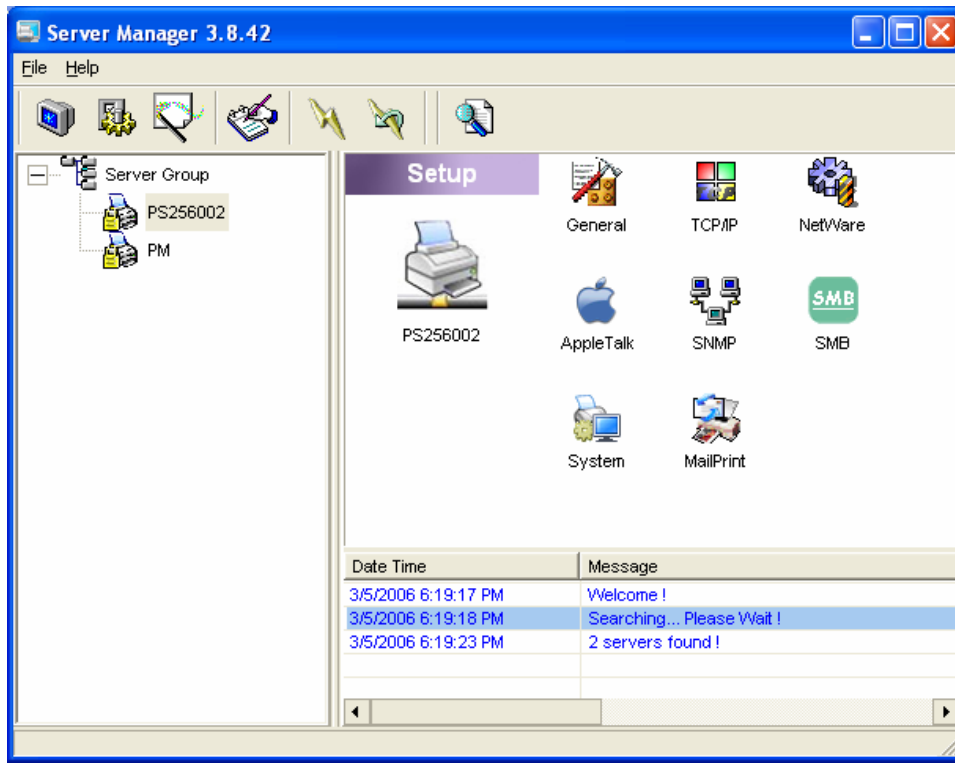
Click “Status” icon  on the tool bar, the status of the current selected print server will be showed on the right side of the window.


The information of the print server displayed are MAC ID, Model Type, Firmware Version, status of each printer port, NetWare file server name, NetWare file server polling interval, NetWare printer queue names, IP address, subnet mask, default gateway, AppleTalk printer type, AppleTalk zone and print server printing ability...etc.

You can refresh the print server’s status by pressing the “Refresh” button .

You can restart the print server by pressing the “Reboot”
button .

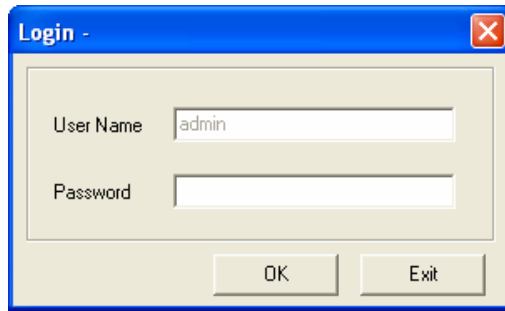
7.4 Setup the Print Server



Click "Setup" icon  on the tool bar, the setup items of the current selected print server will be showed on the right side of the window.

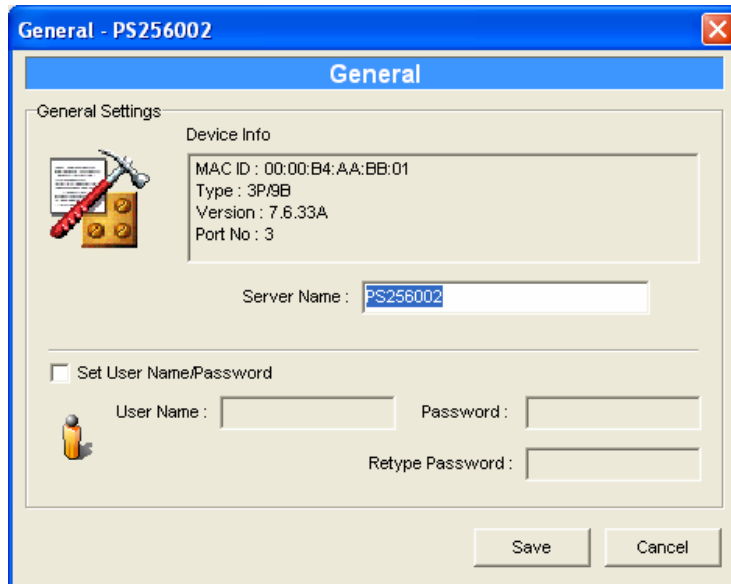
Double click one of the icons to set up the selected print server. A screen will pop up to verify "User Name" and "Password" of the print server. The default values are as follows.

- User Name: admin
- Password: no password (keep it blank)



A screenshot of a Windows-style login dialog box. The title bar is blue and contains the text "Login -" and a red close button. The main area has a light beige background. It contains two text input fields: the first is labeled "User Name" and contains the text "admin"; the second is labeled "Password" and is empty. At the bottom, there are two buttons: "OK" and "Exit".

7.5 General Configuration



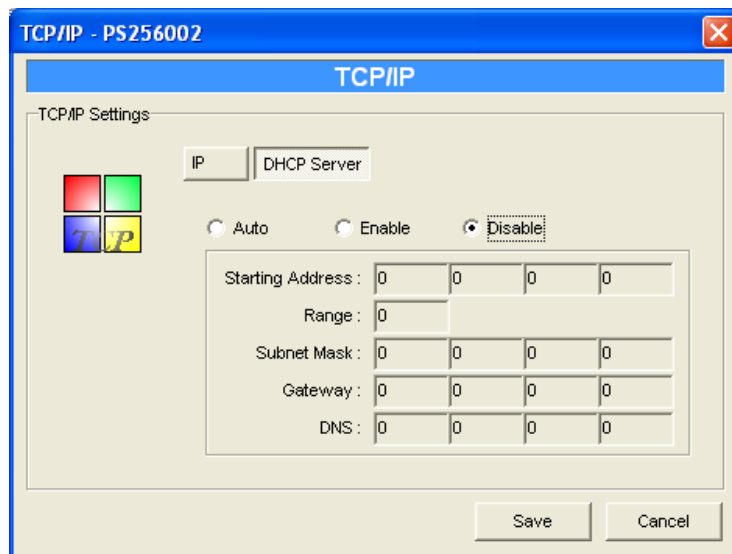
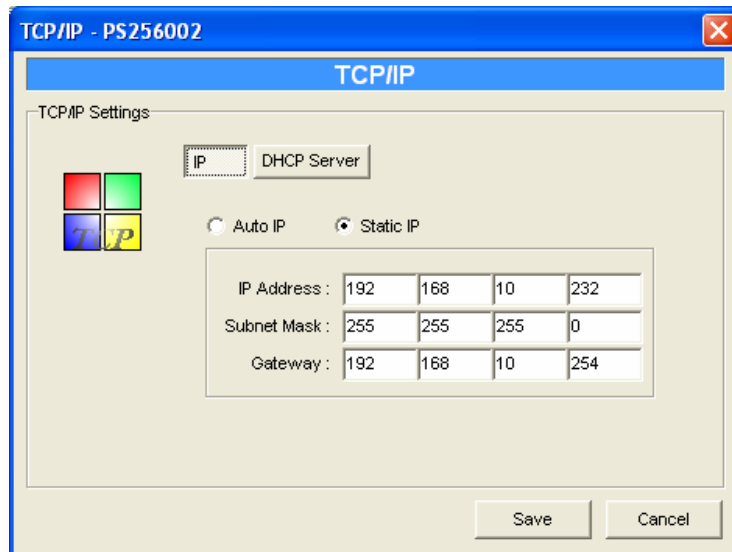
Double Click “General” icon and the General configuration window will pop-up.

You can see basic print server information in this page. You also can configure the “Print Server Name”, “SMB Group Name”, “User Name” and “Password” here.

Server Name, the name of the print server. You can use this name to identify the print server when you are searching for the print server by the administration and client utilities.

User Name / Password is used to authenticate the administrator by the Web administration tool.

7.6 TCP/IP Configuration



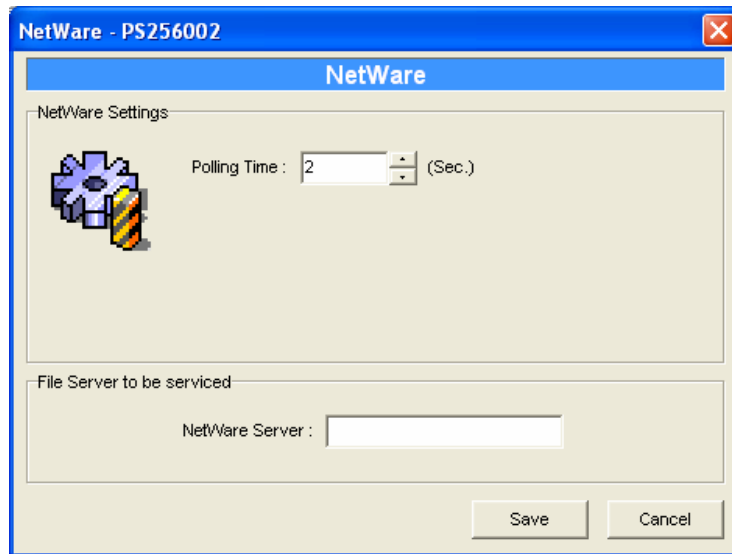
Double Click "TCP/IP" icon and the TCP/IP configuration window will pop-up.

You can configure the print server to automatically get IP from DHCP server or manually specify static IP. The print server also has a built-in DHCP server. You can enable this DHCP server and let it manages IP for you.

Click the “IP” button to enter the IP setting page. If you need the print server to automatically get an IP from DHCP server, select “Auto IP”. You also can select “Static IP” to manually assign “IP Address”, “Subnet Mask” and “Gateway” for the print server.

Click the “DHCP Server” button to enter the DHCP server’s setting page. You can “Enable/Disable” the DHCP server or set “Auto” and assign a range of IP addresses here. The DHCP server is disabled by default. If Auto is selected, the DHCP Server of print server will be enabled only when there is no other DHCP Server within the network. When “Enable” or “Auto” is selected, you have to configure “Starting Address”, “Range”, “Subnet Mask”, “Gateway” and “DNS”. The print server will assign a unique IP for each client.

7.7 NetWare Print Server Configuration



Double Click “NetWare” icon and the NetWare configuration window will pop-up.

This print server supports NetWare Bindery Printing method. The print server periodically polls the NetWare server printer queues for printing jobs. You have to assign the NetWare server name, print server polling interval and the name of queue on the NetWare server for each printer port.

Polling Time is the polling interval of the print server for waiting printing jobs on the NetWare server.

NetWare Server is the name of the NetWare file server that provides printer queues.

7.8 AppleTalk Configuration



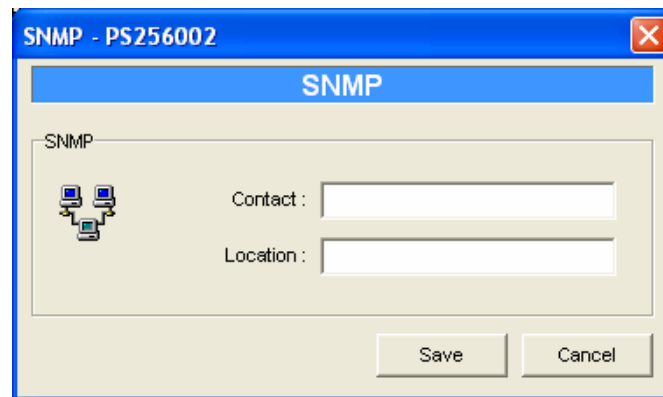
Double Click “AppleTalk” icon and the AppleTalk configuration window will pop-up.

AppleTalk is a data communication protocol often used by Macintoshes. The print server can use these parameters to join the AppleTalk network and share the printer to other AppleTalk workstations. You have to setup the “Zone Name” and “Printer Type” for each printer port of this print server.

Zone Name: Print server has to join zones of AppleTalk before it can be shared to other workstations. Only workstations in the same zone can share the printer. If you want to share the printer to all workstations in all Zones, you should enter only “*” in the “Zone Name” field.

Printer Type, the type of printer attached to each printer port. You can get the printer type from the manufacturer of the printer.

7.9 SNMP Configuration

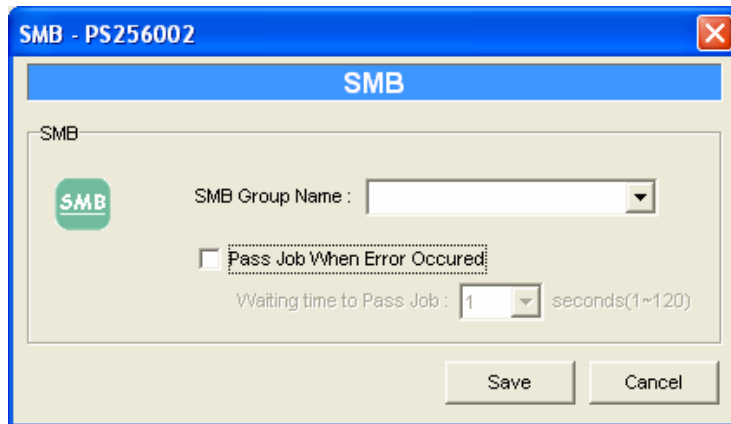


Double Click "SNMP" icon and the SNMP configuration window will pop up.

Contact: You can enter the print server administrator's contact information here. This information will be displayed in the SNMP management tool.

Location: You can enter the installed location of the print server here. This information will be displayed in the SNMP management tool.

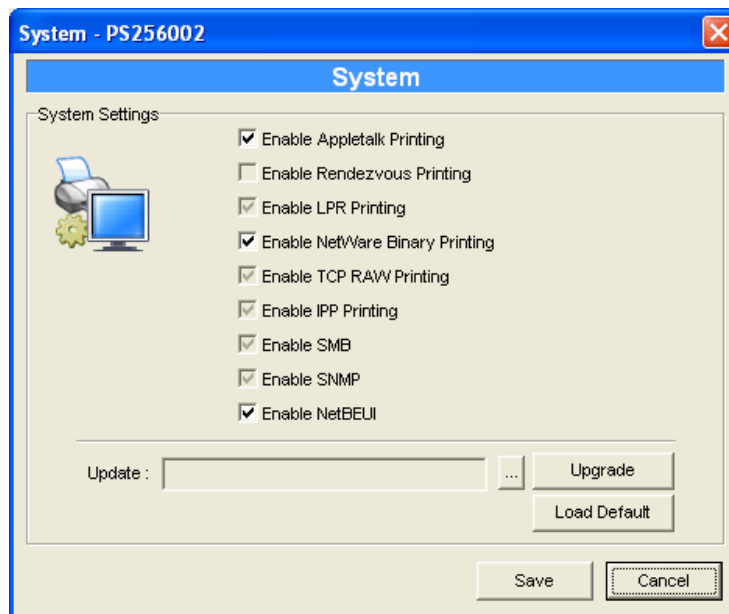
7.10 SMB Configuration



SMB Group Name, the name of SMB group that this print server belongs to. All PC should join the same group before they can use this print server by SMB protocol.

Pass Job when Error Occured: When the printer is interrupted because of paper out or off line while printing, user can set the interval time to bypass the current printing job. Or the printing document will not be printed completely or with unformatted messages. The range is from 1 to 120 seconds.

7.11 System Configuration



Double Click “System” icon and the System configuration window will pop-up.

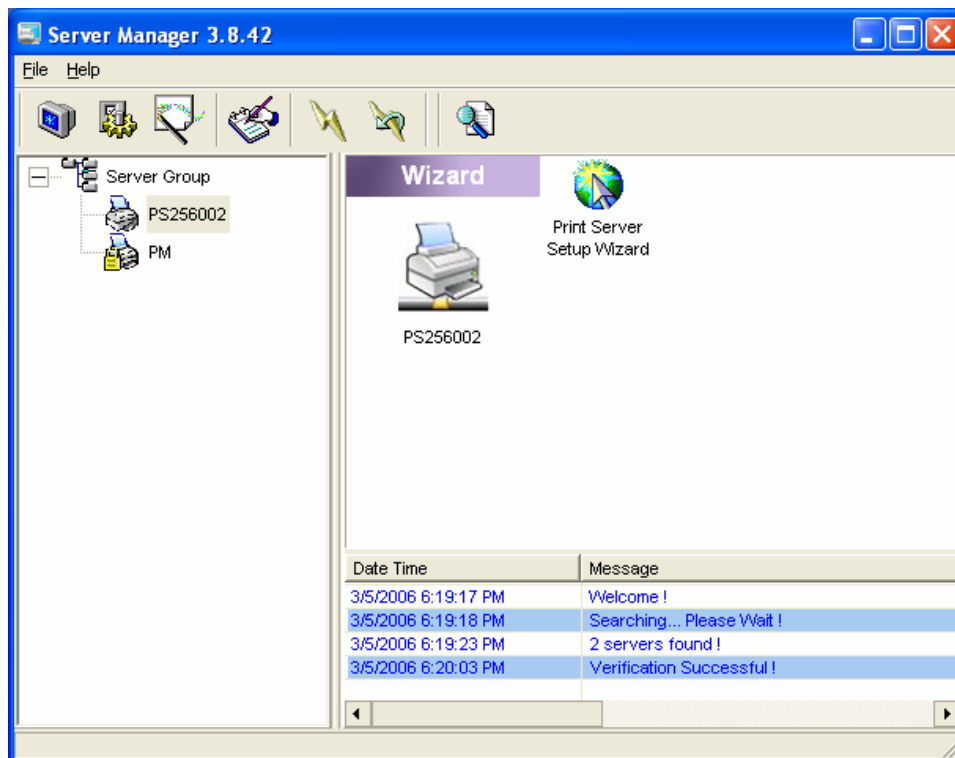
In the System configuration page, you can select to enable/disable each printing or management protocol, assign name for each printer port of this print server, and upgrade the new firmware for this print server.


Upgrade Firmware: You can use this “Upgrade Firmware” tool to update the newest firmware of the print server.

Click “...” button and select the correct firmware in your PC. After selecting the firmware file, click the “Upgrade” button to finish the firmware update process. If you want to reset the Print Server to default factory settings, please click “Load Default”.

Note that before you upgrade the firmware please make sure that the IP Address settings of the MFP Server are in the same network as your computer.

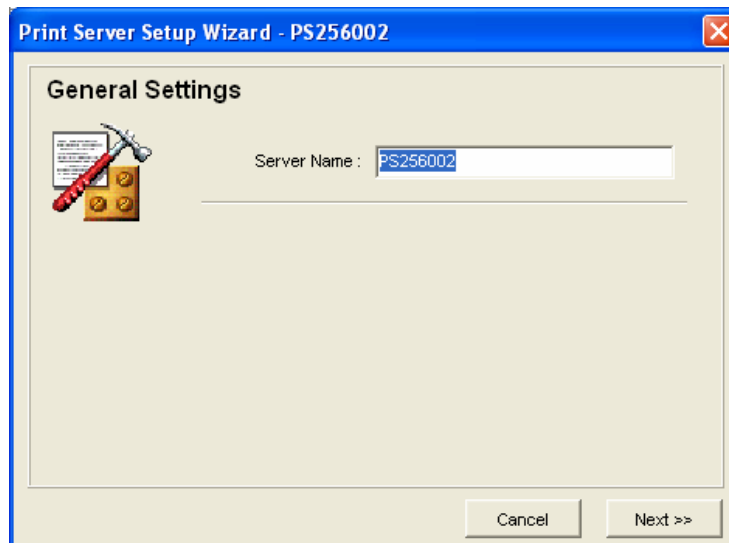
7.12 Wizard



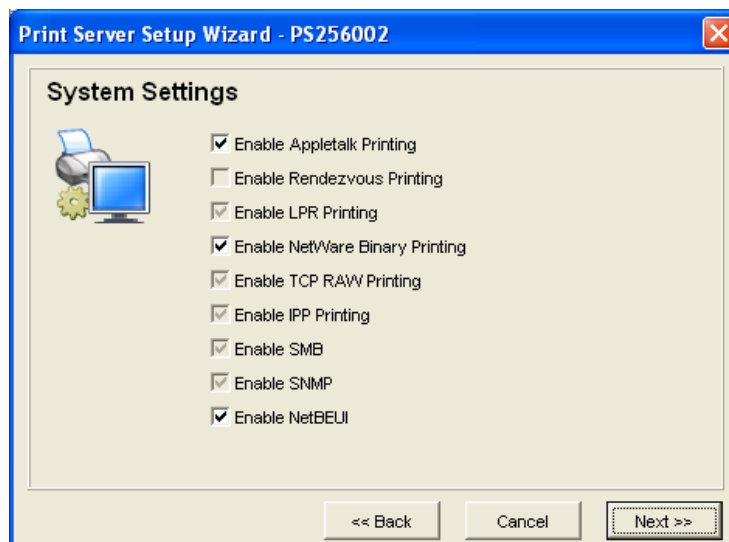
Click “Wizard” icon  on the tool bar, the setup wizard item of the current selected print server will be showed on the right side of the window.

Double click the “Print Server Setup Wizard” the setup wizard will guide you through all the setup process.

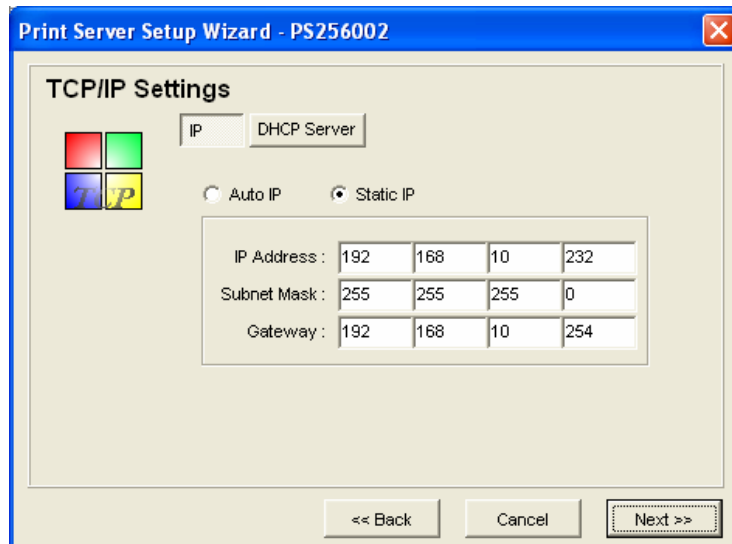
Step 1: Set up the name of this print server.



Step 2: Select to enable required printing protocol. Please refer to section 7.11 for detail information.



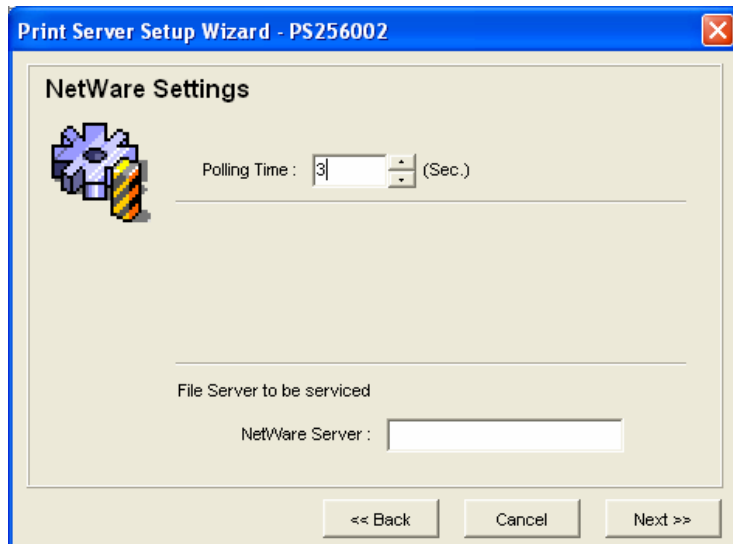
Step 3: Setup the IP of this print server and the DHCP server. Please refer to section 7.6 for detail information.



Step 4: Setup the AppleTalk printing. Please refer to section 7.8 for detail information.



Step 5: Setup the NetWare printing. Please refer to section 7.7 for detail information.



Step 5: Click “Save” to finish setting.



8. Web Management

8.1 Introduction

Print server can be configured and managed on the Web. Through Local Area Network, or even Internet, administrator can easily configure and manage print server's various main functions in browsers. Simply enter print server's IP address into your browser's address field to manage a print server by print server's built-in Web Server. The default IP Address is 10.0.0.1. If the configuration requires you to enter user name and password, please enter "Admin" as user name and let the password blank by default.

Print Server's management screen contains three frames:

Control Panel :

On the top, which contains several HyperText links that links to an information or configuration page respectively.

Status Line :

On the bottom, which is used to display warning or error message.

Configuration Pages :

In the middle, which contains several information pages about print server and its attached printer(s), and several configuration pages used to set up print server.

The browser will group the configuration items into the following topics,

Print Server Info: General Information of print server.

Printer Status: Current status of the attached printers.

NetWare Status: Print Server connection information of NetWare.

DHCP Status: Current IP Address and DHCP server status and information.

Device Cfg: Device configuration.

IP Cfg: IP configuration.

DHCP Cfg: DHCP parameter configuration.

Mail Print Cfg: Email printing configuration.

SMB: SMB group configuration.

AppleTk Cfg: AppleTalk parameter configuration.

SNMP Cfg: SNMP Information configuration.

Utilities: Some utilities for print server.

Upgrade: Upgrade the new firmware of the print server.

In order to protect your print server, you can get all information pages at any time you like, but you can not save the configuration pages before password verification. You will be asked to check username and password when you want to save a configuration page and you have not been verified yet. Please ignore the username and enter

password at that moment and reload the configuration pages again. The configuration pages will now be displayed in the browser window.

8.2 Getting Print Server Information

Each time you run browser to connect to a print server, you will get this print server information page initially. The print server information page displays some general information of print server.

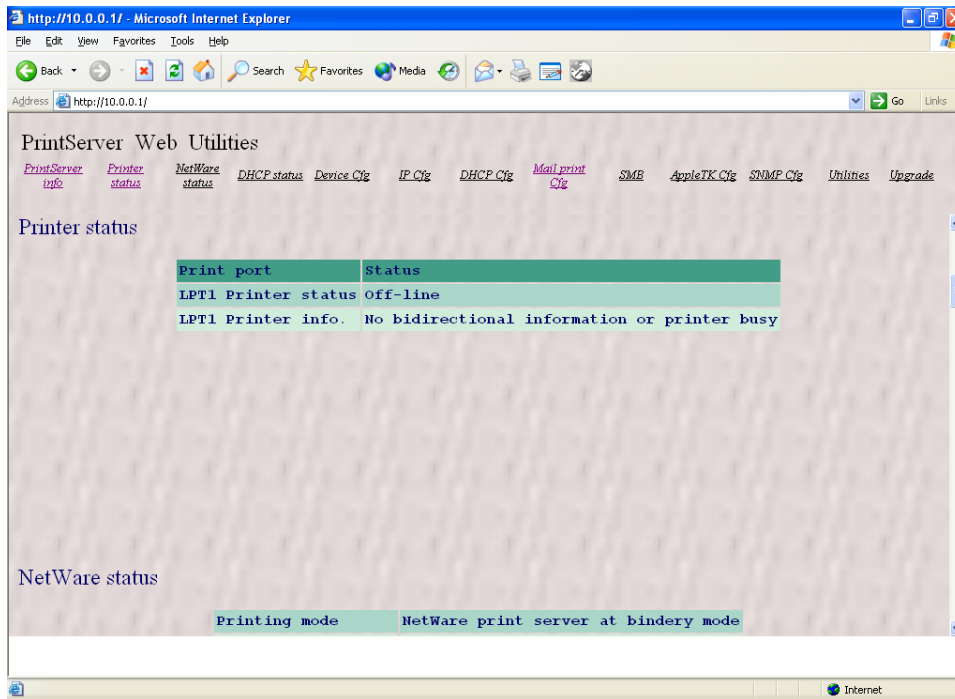


The screenshot shows a Microsoft Internet Explorer browser window with the address bar set to `http://10.0.0.1/`. The page title is "PrintServer Web Utilities". A navigation menu includes links for [PrintServer info](#), [Printer status](#), [NetWare status](#), [DHCP status](#), [Device Cfg](#), [IP Cfg](#), [DHCP Cfg](#), [Mail print Cfg](#), [SMB](#), [AppleTK Cfg](#), [SNMP Cfg](#), [Utilities](#), and [Upgrade](#). The main content area is titled "PrintServer information" and contains a table with the following data:

Device name	PS4AFD9F
Alias name	PS629565
Model	1P/9E-7.5.18A
Ethernet ID	00:00:B4:4A:FD:9F
Frame type	Ethernet II, 802.2, 802.3, SNAP
Protocols support	IPX/SPX & TCP/IP & SNMP & NetBEUI & AppleTalk
NetBEUI	Active
Applications	print server/LPD/POP3/PTPP Printing
Network speed	10/100 Mbps
Diagnostic printout	Disable

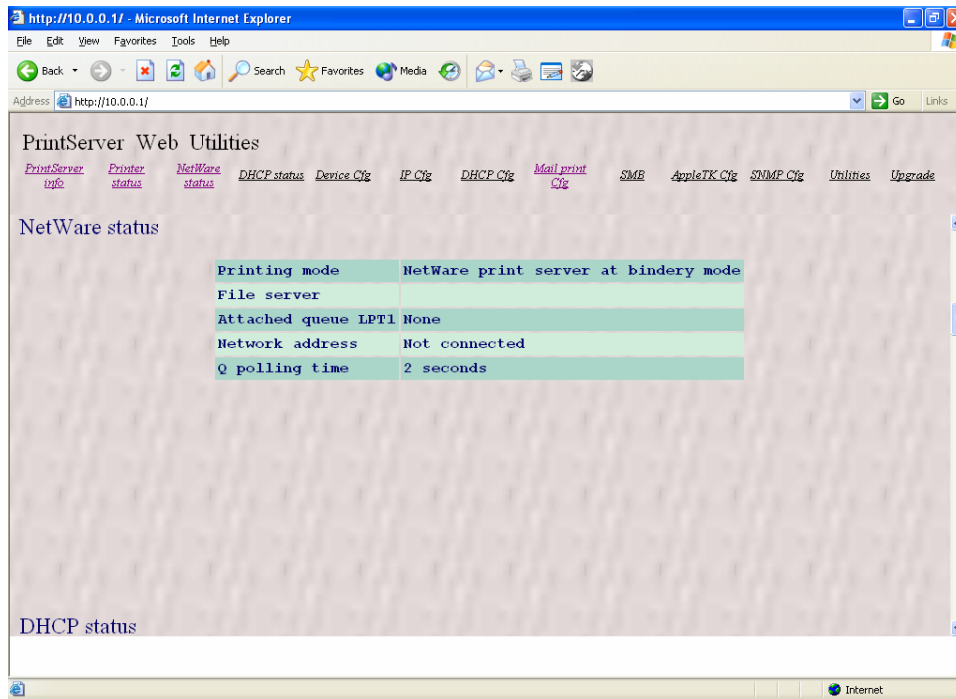
8.3 Getting Printer Status

The Printer status page can be used to display the status of attached printer(s) for each port.



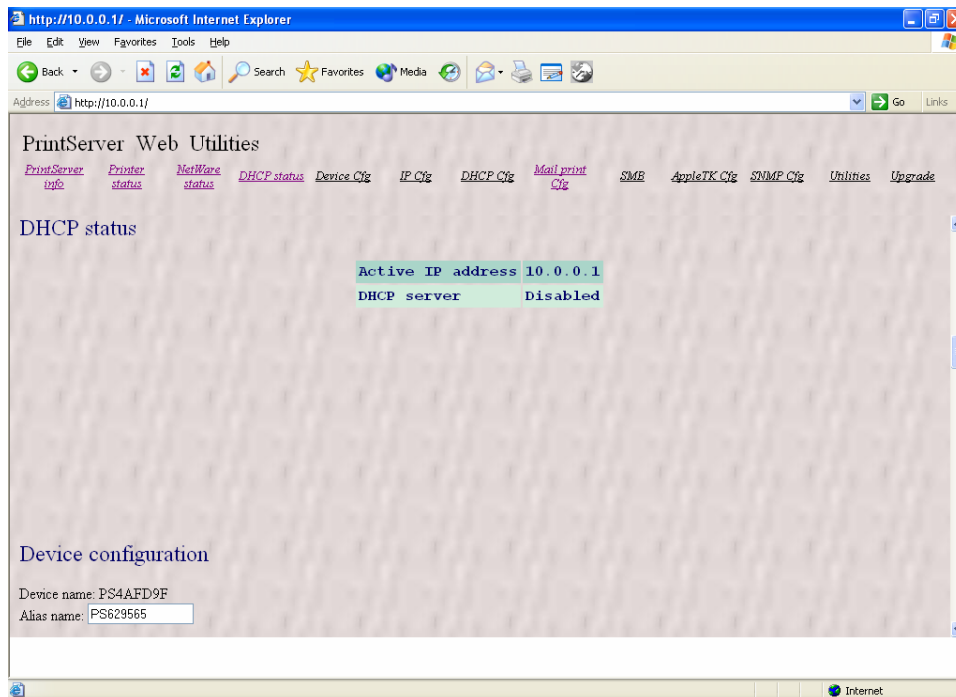
8.4 Getting NetWare Information

The NetWare status page displays the NetWare connection information of the print server.

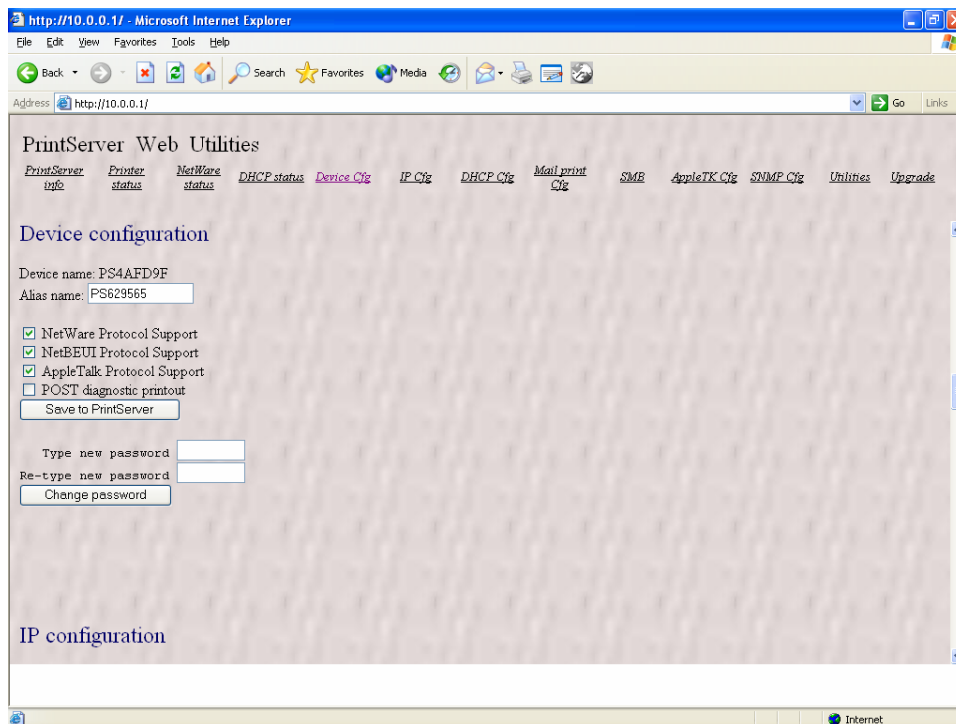


8.5 Getting DHCP Status

The DHCP status page can be used to display the print server's IP address and the DHCP Server information.



8.6 Changing Device Configuration



The Device Cfg page allows you to set:

Alias name, an alternate name by which the print server can be called (in addition to the PSxxxxxx name printed on the label).

NetWare Protocol Support, which determines whether or not the print server support NetWare printing function.

NetBEUI Protocol Support, which determines whether or not the print server support NetBEUI network protocol.

POST diagnostic printout, which determines whether or not a diagnostic printout should be printed to the attached printer.

Save to Print Server button: save the configuration to the print server.

Type new password, change to new password.

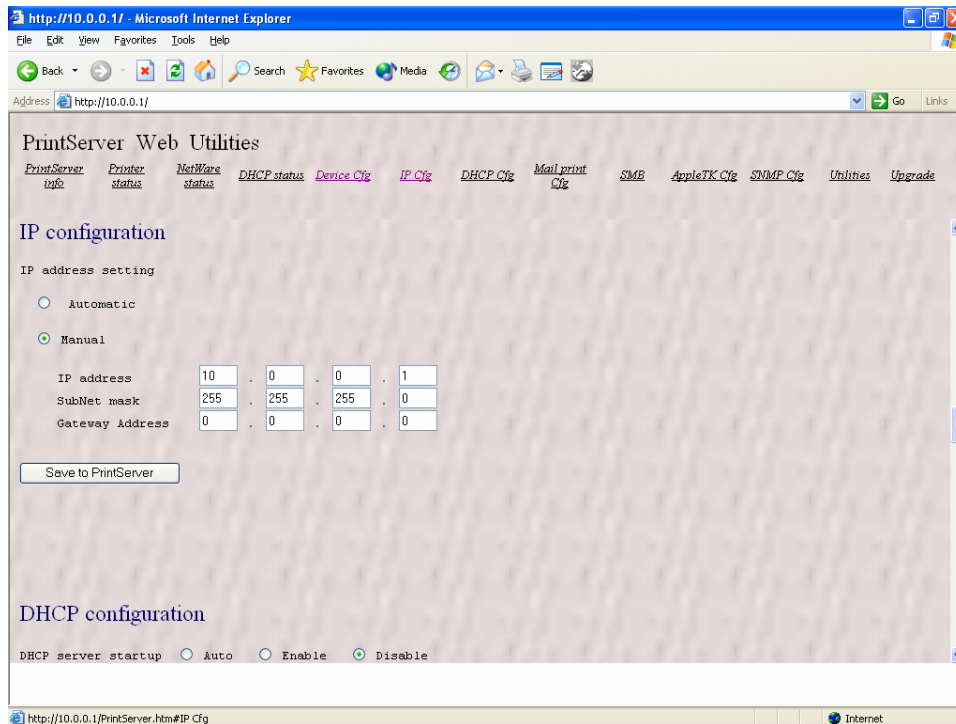
Re-type new password, confirm the new password.

Change password button: save the new password to the print server.

The print server will verify your password (it will ignore the User Name item) when you save the configuration.

Make sure to reset the print server (described in section 8.13) to let the changes take effect.

8.7 Setting IP Address

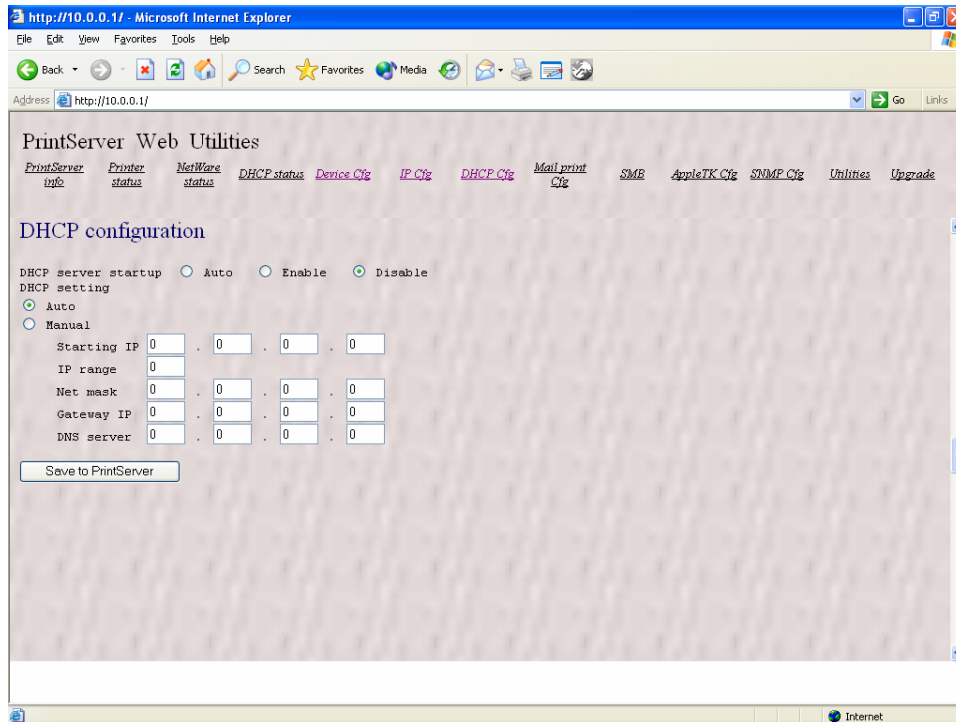


The IP Cfg page allows you to configure the IP address where the print server is to be located. The print server will obtain its IP address automatically by the protocol DHCP, BOOTP, RARP if you configure the IP address as Automatic. Click Save to print server button to save the configuration to the print server.

The print server will verify your password (it will ignore the User Name item) when you save the configuration. Make sure to reset the print server (described in section 8.13) to let the changes take effect.

8.8 Configuring DHCP Parameters

The print server can be configured as DHCP server to provide dynamic IP addresses assignment. The DHCP Cfg page allows you to set.



The DHCP server startup, which determine if the print server will act as DHCP server. If this item is set to Auto, the print server will detect if there is any other DHCP server on the network when it boots up. If there is no DHCP server on the network, then the print server will configure as DHCP server itself; otherwise it will disable this function.

DHCP setting is used to configure TCP/IP parameters that will be assigned to a DHCP client. If this item is set to Auto, the print server will determine all TCP/IP parameters

automatically; otherwise you will configure the following parameters:

Starting IP: specifies the starting IP address for assigning to DHCP clients.

IP range: specifies how many IP addresses are available to DHCP clients.

Net mask: gives the network mask.

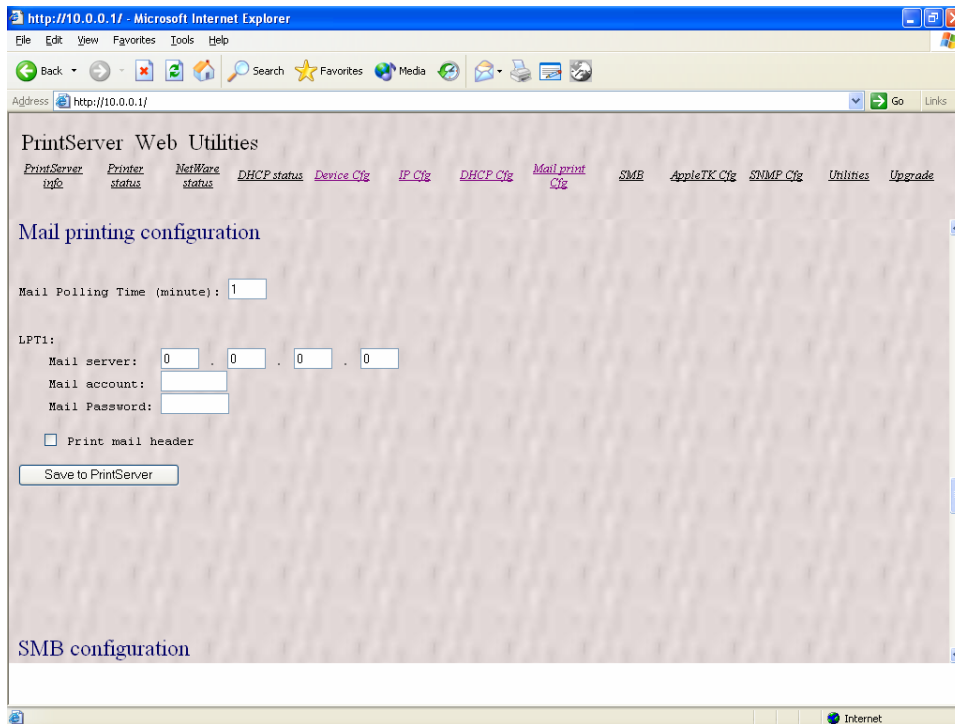
Gateway IP: gives the IP address of the default gateway.

DNS server: gives the IP address of the domain name server.

Save to Print Server button: save the configuration to the print server.

Make sure to reset the print server (described in section 8.13) to have the changes take effect.

8.9 Configuring E-Mail Printing



Using print server's email printing function, the client user on the Internet can email the printing file to a dedicate mailbox, print server will automatically get the email from that mailbox and print it to the attached printer. The detail function description is described in the Email Printing Chapter.

The page allows you to set:

Mail Polling Time, default value is one minute. It means the system polling time for getting the email from mail server.

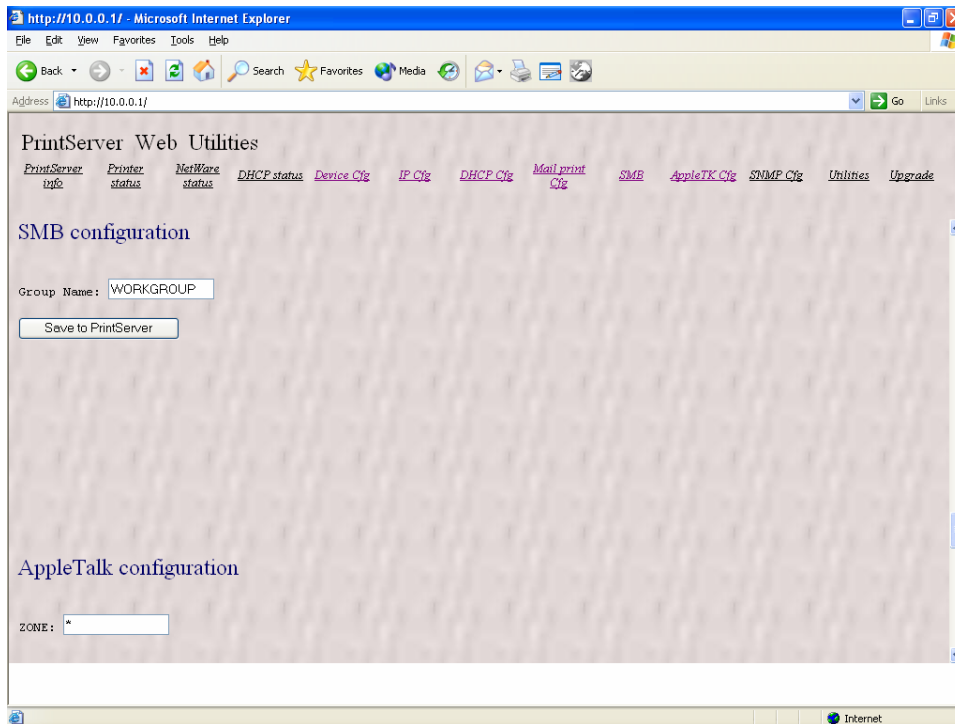
Mail Server, the mail server IP address of the mailbox located.

Mail Account, the account of the mailbox in the mail server.

Mail Password, the password of the mail account.

Print Mail Header, which determines whether or not the printing job will print out the mail header.

8.10 Configuring SMB



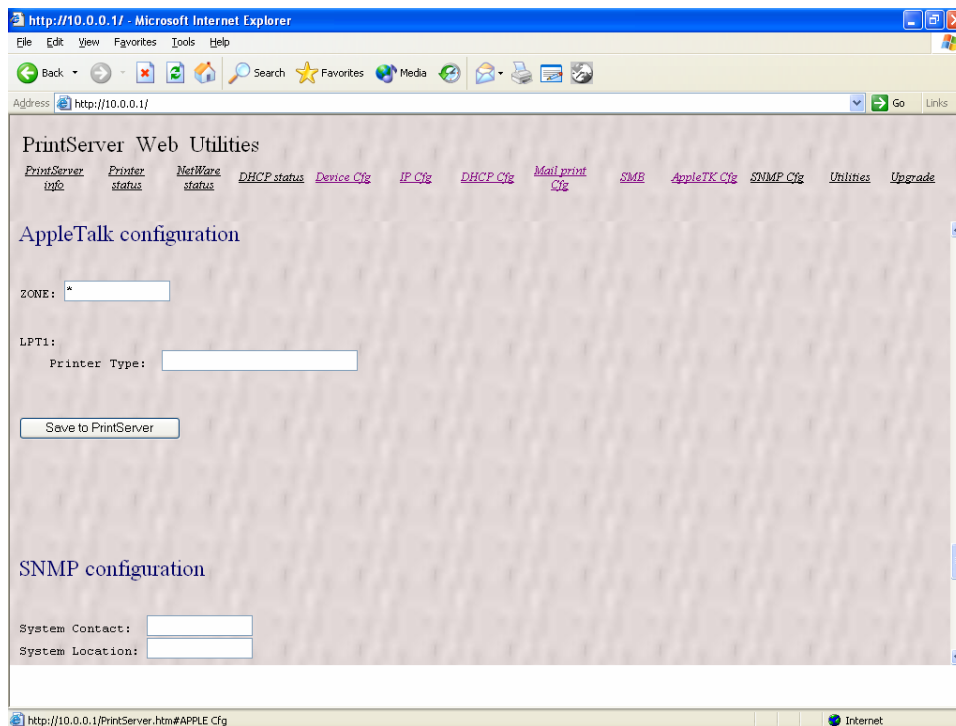
All PC should join the same group before they can use this print server by SMB protocol.

SMB Group Name, the name of SMB group that this print server belongs to.

Save to Print Server, save the configuration to the print server.

Make sure to reset the print server (described in section 8.13) to have the changes take effect.

8.11 Configuring AppleTalk



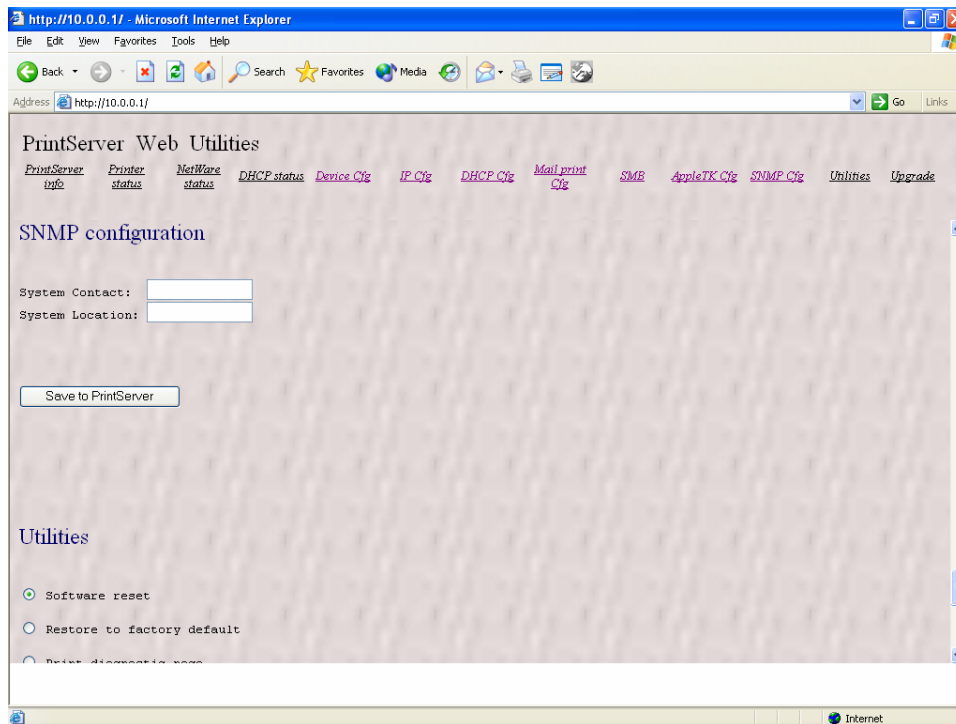
AppleTalk is a data communication protocol often used by Macintoshes. The print server can use these parameters to join the AppleTalk network and share the printer to other AppleTalk workstations. You have to setup the “Zone Name” and “Printer Type” for each printer port of this print server.

Zone Name: Print server has to join zones of AppleTalk before it can be shared to other workstations. Only workstations in the same zone can share the printer. If you want to share the printer to all workstations in all Zones, you should enter only “*” in the “Zone Name” field.

Printer Type, the type of printer attached to each printer port. You can get the printer type from the manufacturer of the printer.

8.12 Configuring SNMP Parameters

The SNMP Cfg page allows you to configure the SNMP parameters of this print server. These information can be browsed by the SNMP MIB browser.



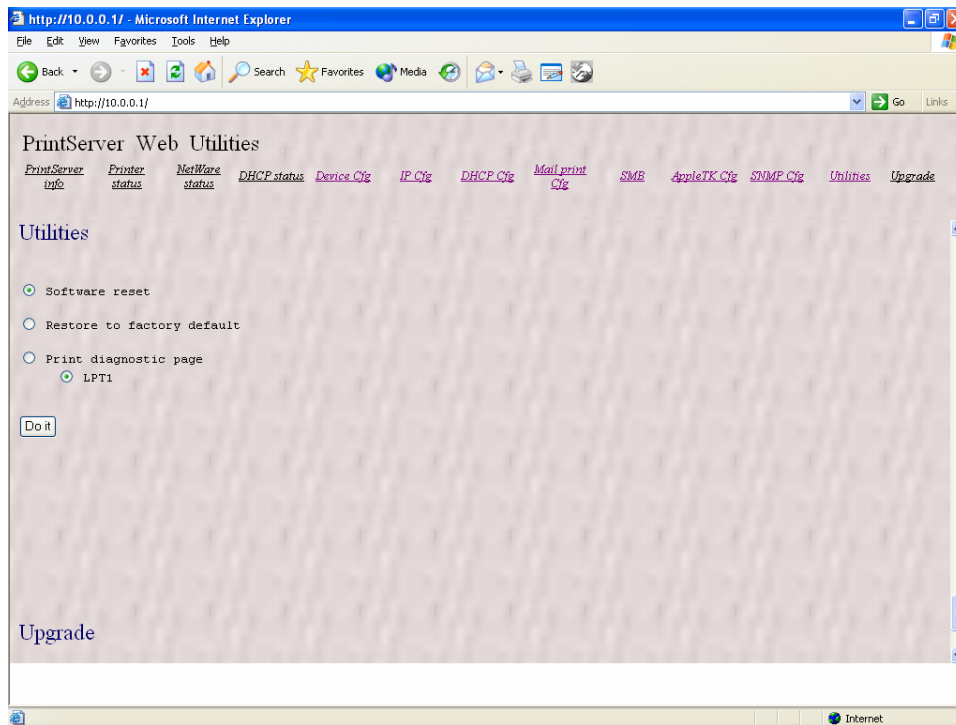
The page allows you to set:

System Contact, the system Administrator information of this print server.

System Location, the System location of this print server.

8.13 System Utilities

You can perform several tasks from this Utilities page, as described below:



The Software reset: which determines whether or not to reset the print server.

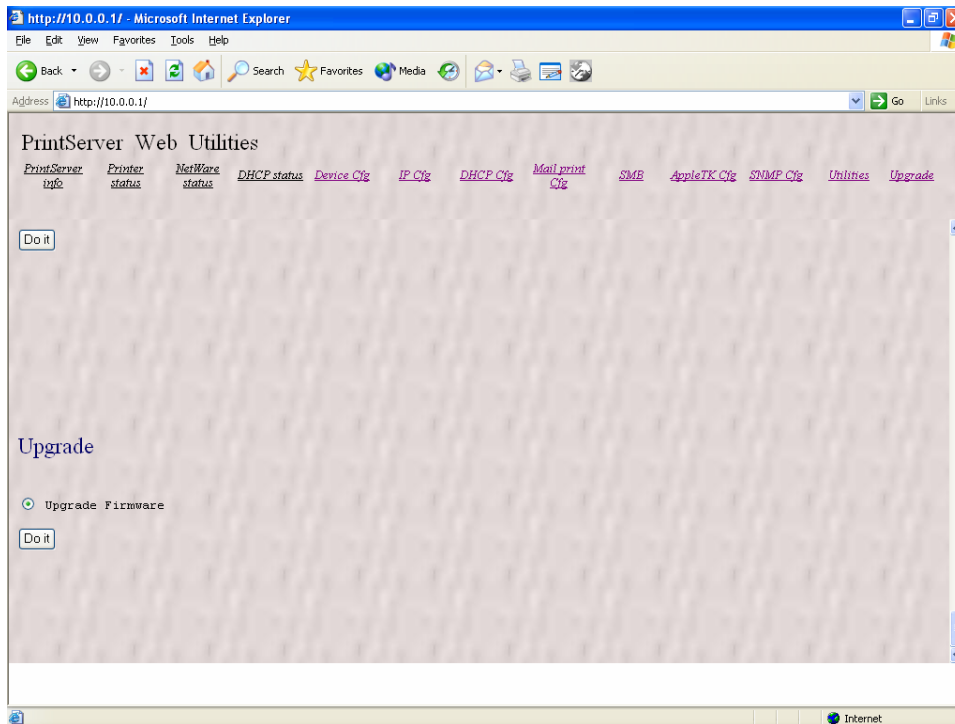
The Restore to factory default: which determines whether or not to erase all of the print server's setting and restore to the default configuration the print server had when it was shipped from the factory.

The Print diagnostic page: which determines whether or not to print a diagnostic page to an attached printer connected at either LPT1, LPT2 or LPT3 of the print server. This feature can be used to test the print server to

make sure it is operating properly, or to isolate any installation problems.

The Do it button: do the action specified in the above.

8.14 Firmware Upgrading



The page allows you to upgrade firmware of the print server. Click “Do it” button and enter the password, the system will guide you to finish the firmware upgrading. Be aware that if you have started upgrading firmware, you have to follow all the upgrading steps or the print server can’t turn back to normal configuration.

9. IPP Printing

9.1 Introduction

IPP (Internet Printing Protocol) Printing provides a convenient way of remote printing service by TCP/IP. The print server can support IPP printing by default. It is needless to do any setting. Any PC that can support IPP printing, for example Windows 2000/XP, can directly uses the print server by IP. By using the IPP printing, you can share the printer to all the PC's that can access the print server by IP. You can even share your printer to Internet users.

9.2 System Setup

9.2.1 Print Server Side

It is needless to do any setting on the print server side. Make sure the print server has correct IP settings. If you want to share the printers to Internet users, you have to set a real IP to the print server. You also have to make sure that any gateway; router or firewall does not block IPP protocol if you have these gateway devices installed in your network.

9.2.2 Client Side

You only need to perform Window's standard **Add New Printer** procedure.

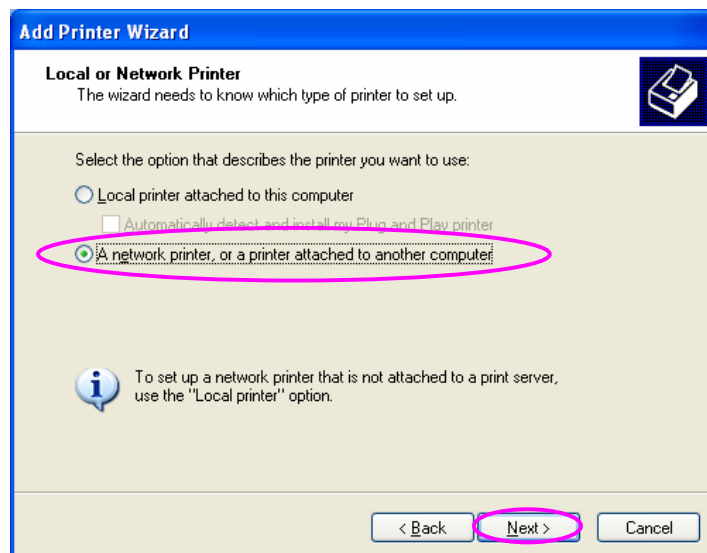
Step1. Click "Start", choose "Settings" and select "Printers and Faxes".

Step2. Click "Add a Printer".

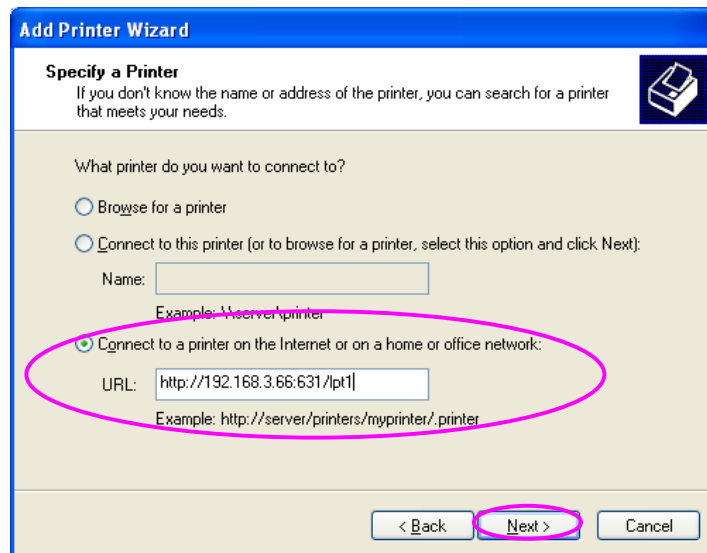
Step3. The “Add Printer Wizard” is displayed. Click “Next”.



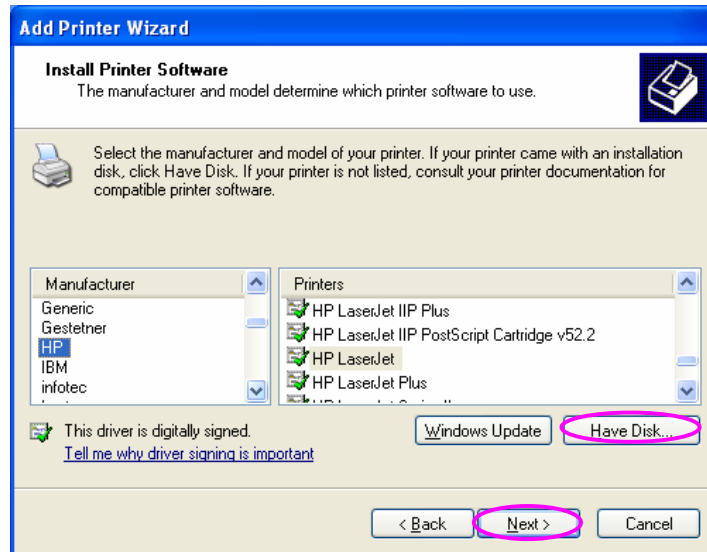
Step4. Select “A network printer, or a printer attached to another computer”. Click “Next”.



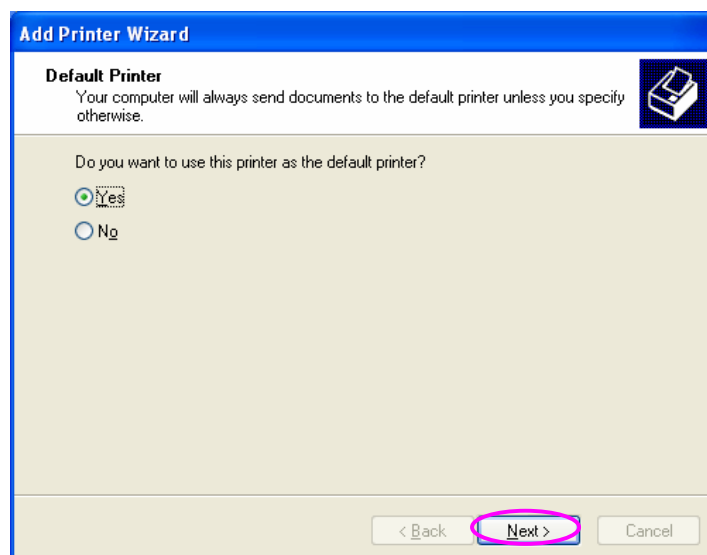
Step5. Select “Connect to a printer on the Internet or on a home or office network” and enter the URL of print server. The URL format is “http://IP:631/Port Name”. The IP should be the print server’s IP. The number 631 is IPP standard port number. Port Name is the port name of print server that your printer is connected to. The default port name is “lpt1”. One example of the URL is http://192.168.3.66:631/lpt1. After entering the URL of print server, click “Next”.



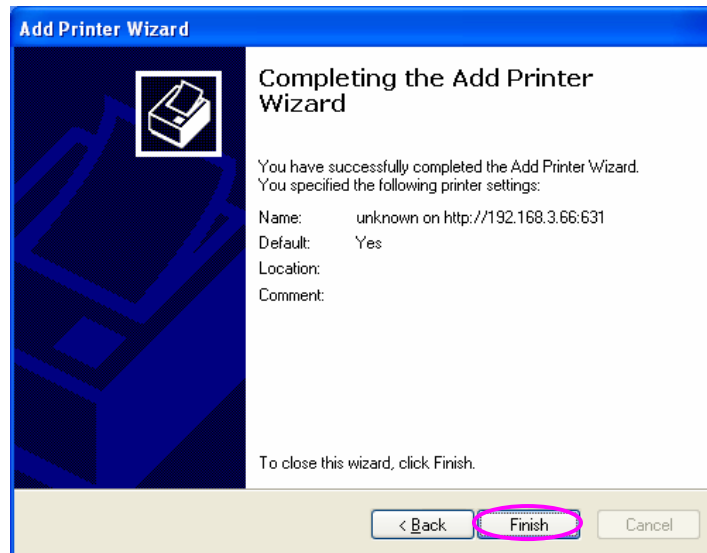
Step6. Select a suitable printer manufacturer and the printer model and click “Next”. If your printer is not in the list, click “Have Disk...” to install the driver of the printer. After installation, the printer model will be added to the list.



Step7. Choose to set the print whether as a default printer or not. Click “Next”.



Step8. You have added the network printer to the PC successfully. The information of the printer is displayed in the windows. Click “Finish”.



10. LPR Printing

10.1 Introduction

LPR Printing (Line Printer Remote technology) allows users to connect to printers via TCP/IP for printing sharing. The computer with Windows 98SE/Me/NT/2000/XP/2003, Windows Vista and MAC OS 10.x Operating Systems can use the protocol to share printing in the network. Print Server can support LPR printing by default.

If you install the Print Server in Windows 98SE/Me/NT, the Print Server provides a tool “Network Ports Quick Setup” that helps to add the LPR protocol to users’ computer easily. Please refer to Section 3.6.1.

To configure the LPR setting in Windows 2000/XP/Vista and MAC OS 10.x, please follow the procedures describe in the following sections.

10.2 Standard LPR Settings in Windows XP

To configure the LPR setting in Windows XP, please follow the steps below. The LPR setup procedures in Windows 2000 and 2003 are similar.

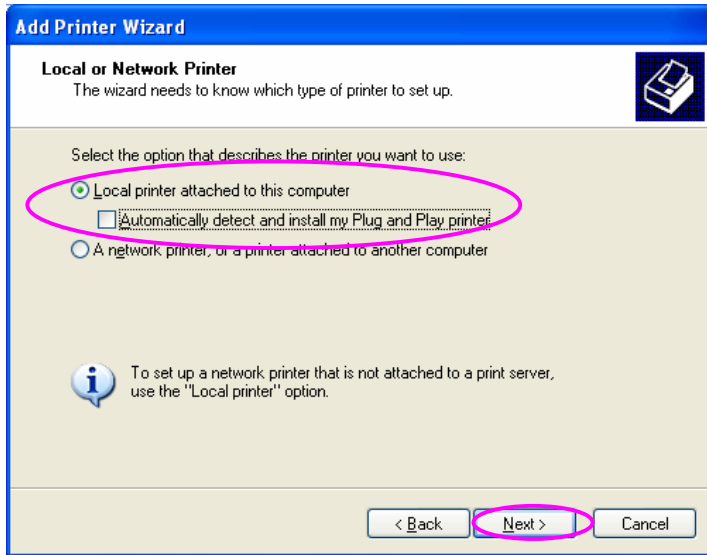
Click “Start”, choose “Settings” and select “Printers and Faxes”.

Click “Add a Printer”.

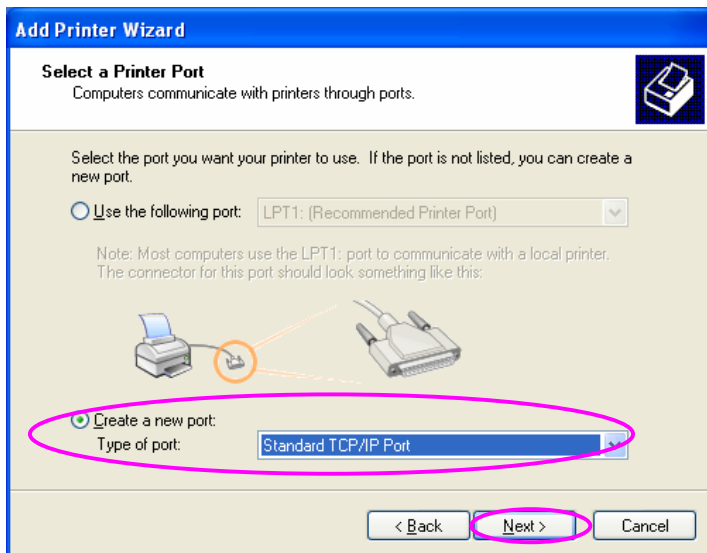
The “Add Printer Wizard” is displayed. Click “Next”.



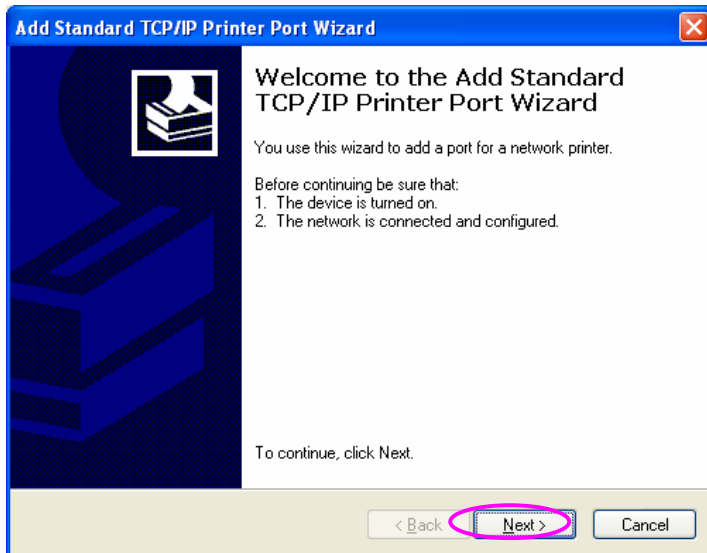
Select “Local Printer attached to this computer” and click “Next”.



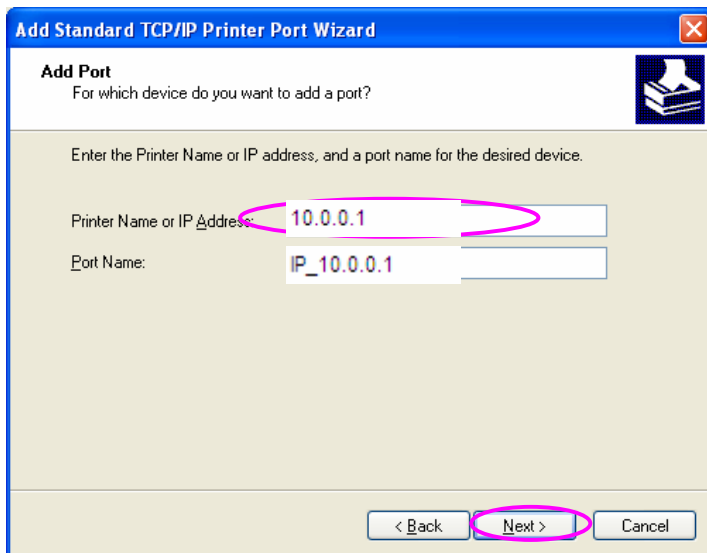
Choose “Create a new port” and “Standard TCP/IP Port”. Click “Next”.



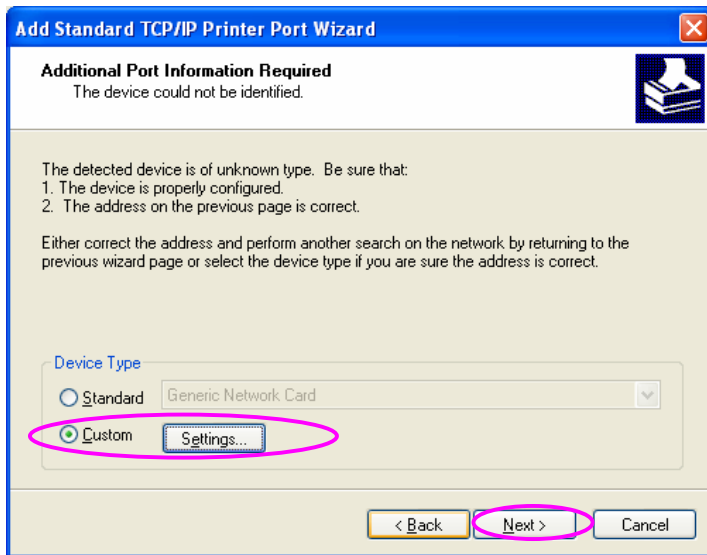
Please make sure that the Print Server and the Printer have turned on and connected to the network correctly before you continue. Click “Next”.



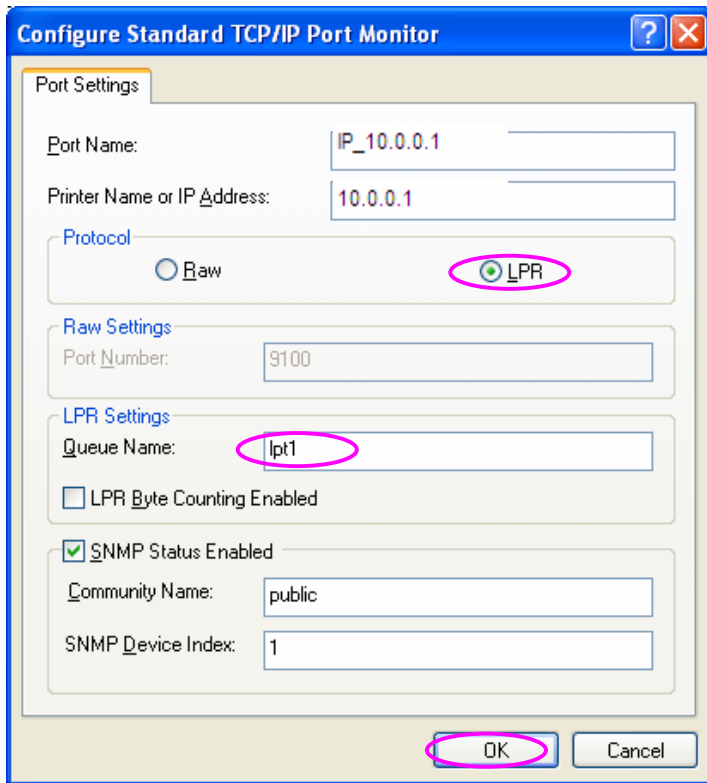
Enter the IP Address of the Print Server in the “Printer Name or IP Address”. Click “Next”.



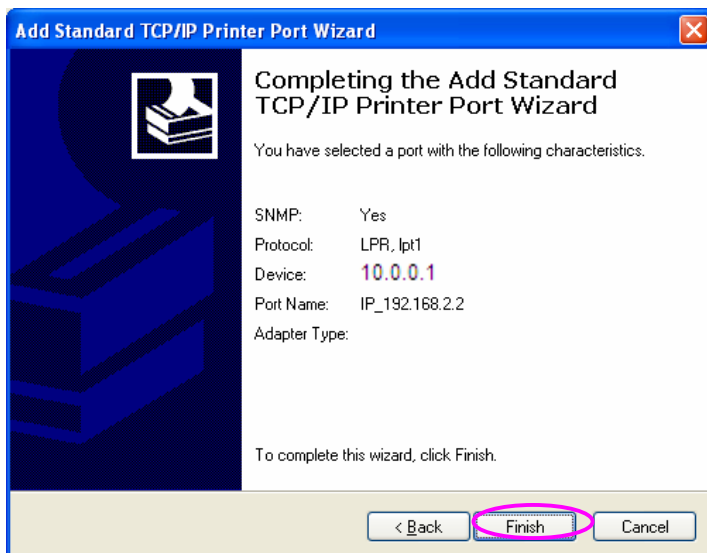
Select “Custom” and click “Settings”. When you have finished the settings at step 9, click “Next” to continue.



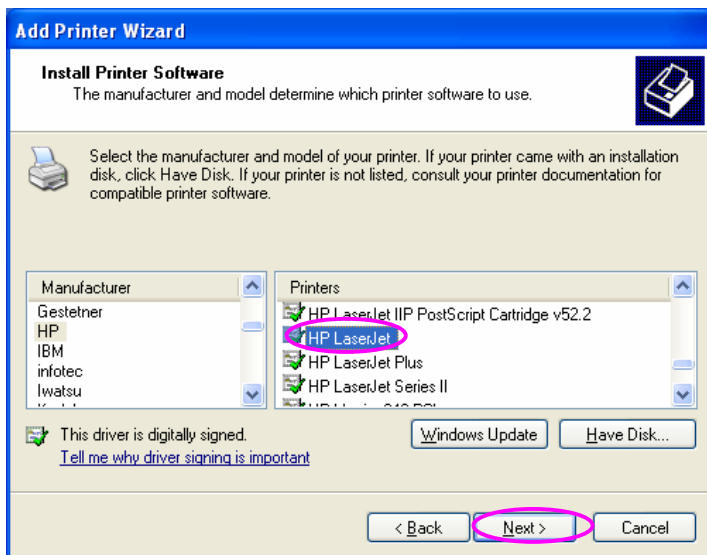
Select “LPR” and enter “lpt1” in the “Queue Name”, click “OK”. By default the queue name of the Print Server is “lpt1”.



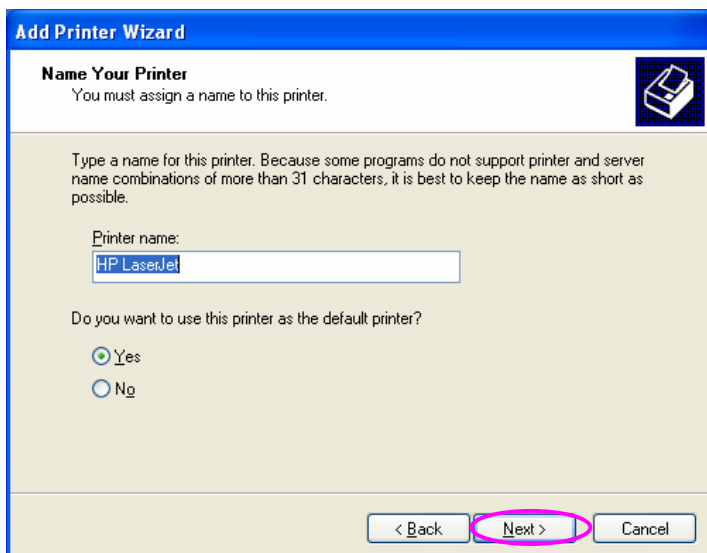
Click "Finish".



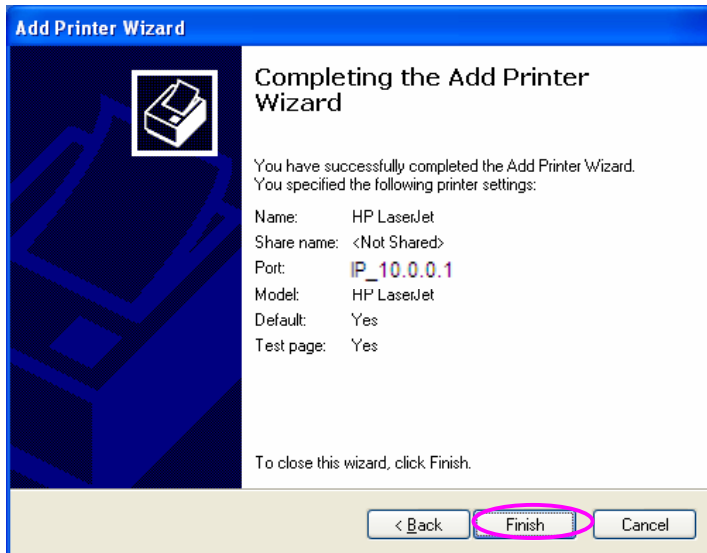
Select a suitable printer manufacturer and the printer model and click “Next”. If your printer is not in the list, click “Have Disk...” to install the driver of the printer. After installation, the printer model will be added to the list.



Choose to set the print whether as a default printer or not. Click “Next”.



You have added the network printer to the PC successfully. The information of the printer is displayed in the windows. Click “Finish”.



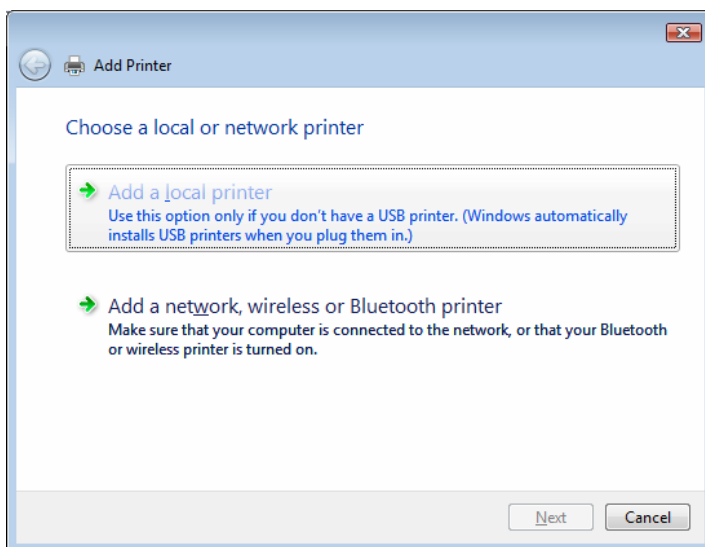
11.3 Standard LPR Settings in Windows Vista

To configure the LPR setting in Windows Vista, please follow the steps below.

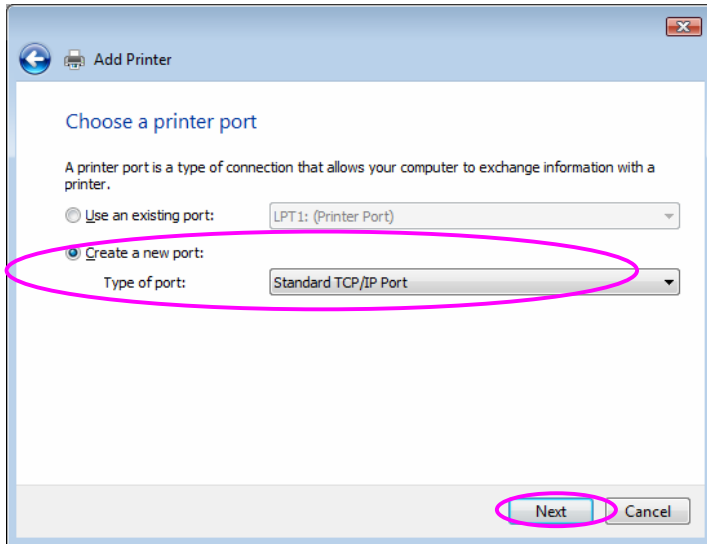
Click “Start”, select “Settings\Printers”.

Click “Add a Printer”.

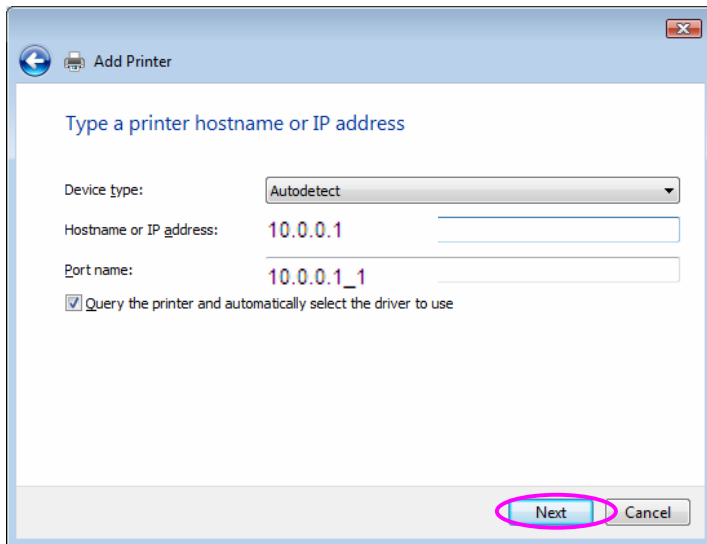
The “Add Printer” wizard is displayed. Select “Add a local printer”.



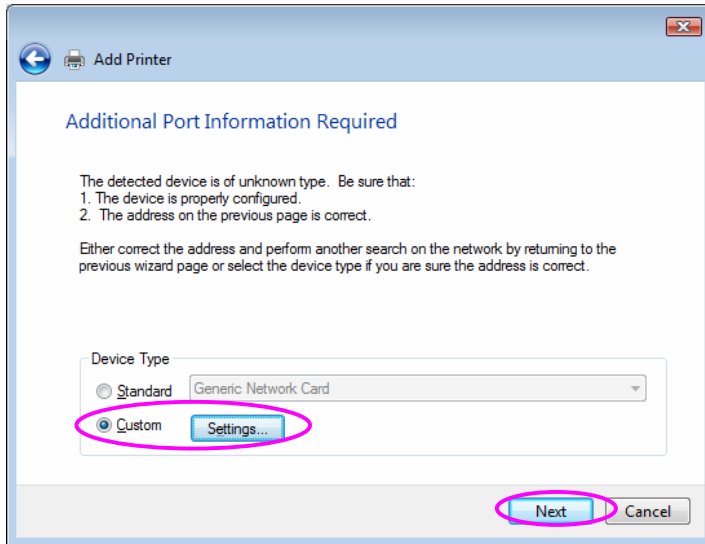
Choose “Create a new port” and select “Standard TCP/IP Port”. Click “Next”.



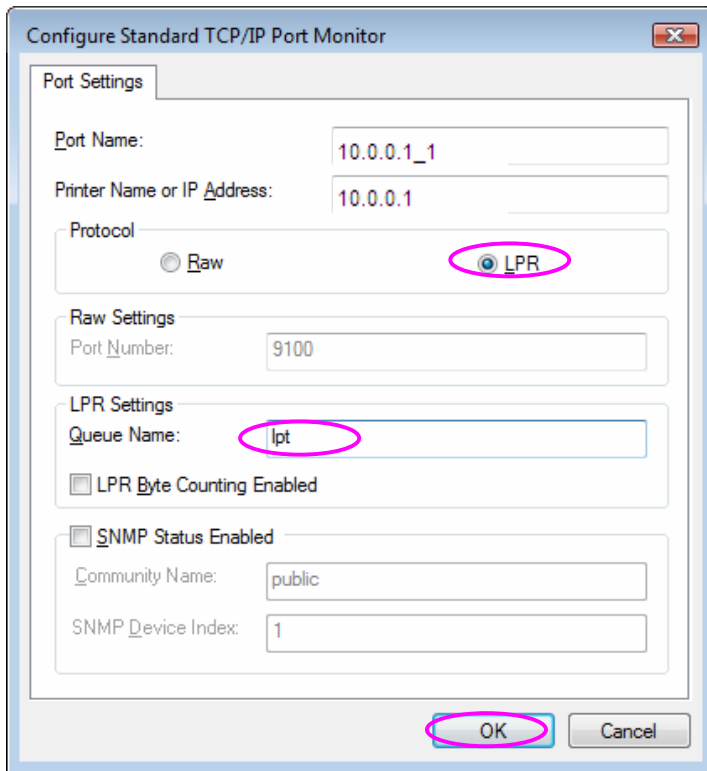
Enter the IP Address of the Print Server in the “Hostname or IP address” field. Click “Next”.



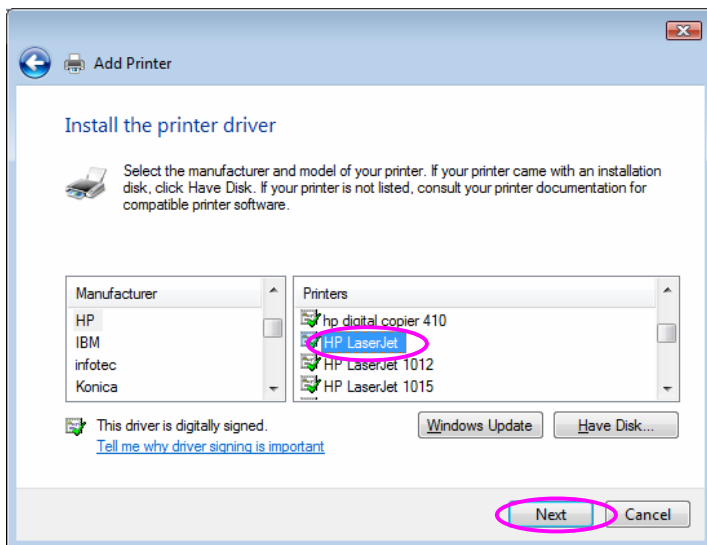
Select “Custom” and click “Settings”. When you have finished the settings at step 7, click “Next” to continue.



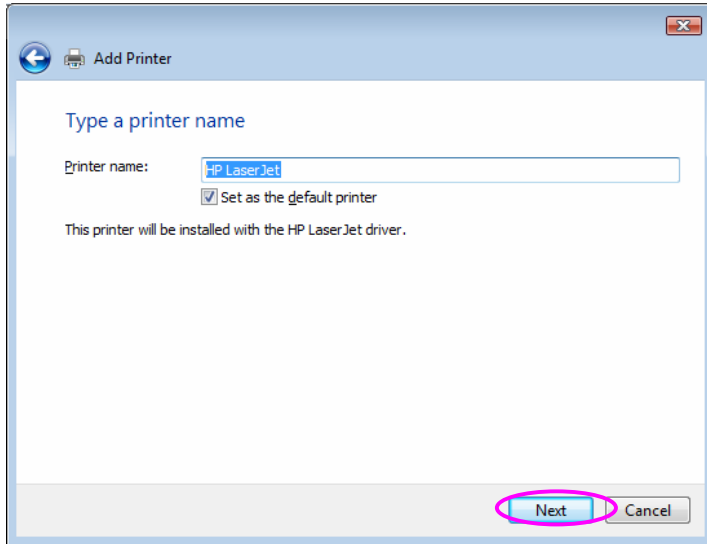
Select “LPR” and enter “lpt1” in the “Queue Name”, click “OK”. By default the queue name of the Print Server is “lpt1”.



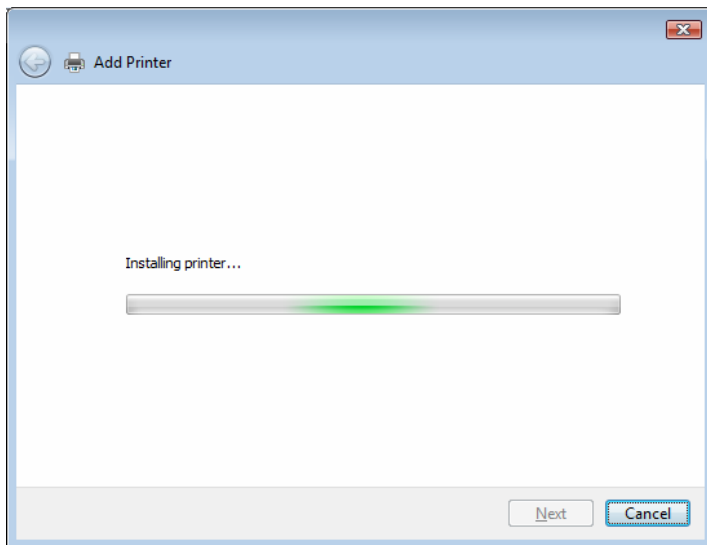
Select the printer manufacturer and the printer model and click “Next”. If your printer is not in the list, click “Have Disk...” to install the driver of the printer. After installation, the printer model will be added to the list.



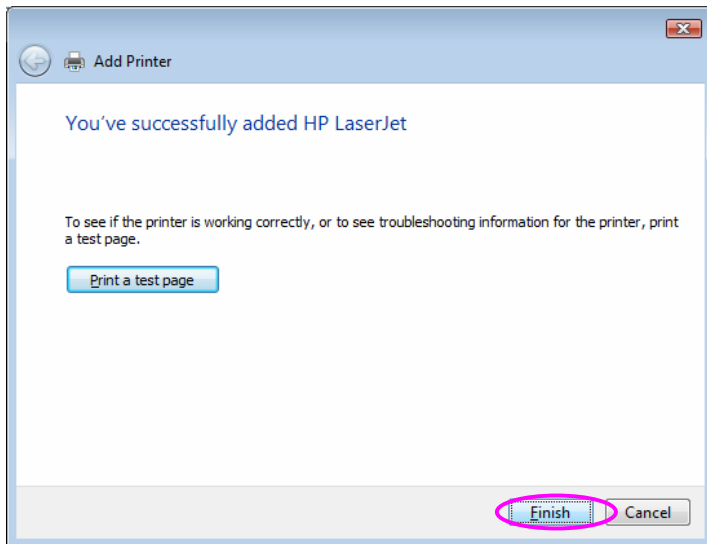
Name your printer and set the default printer, click “Next”.



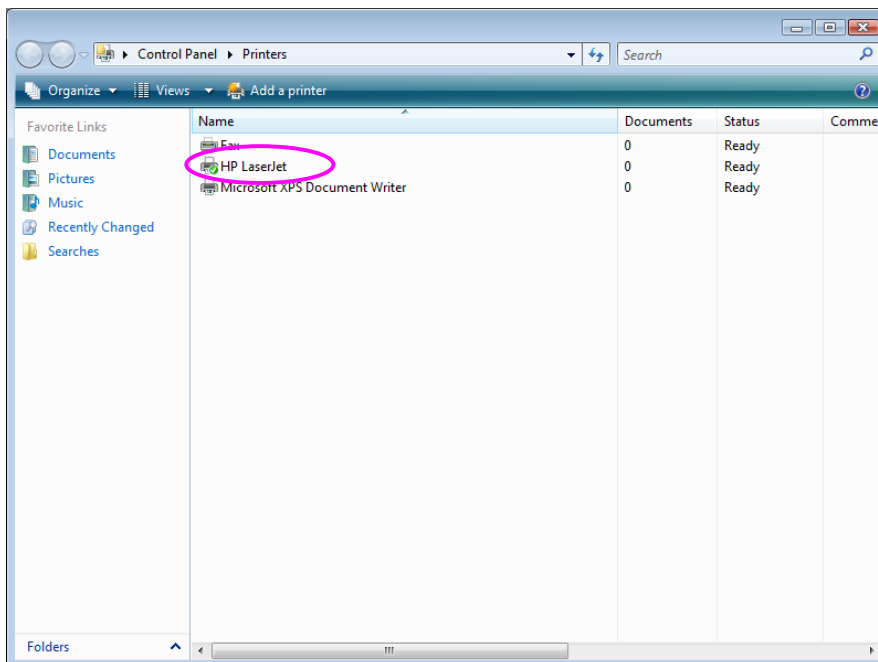
The printer drivers are being installed.



It is recommended to print a test page. Click “Finish”.



The printer is added to “Printers” page, you have added the printer to your computer successfully. Now you can start to print from your computer to the print server.



11.4 Standard LPR Settings in MAC OS 10.x

11.4.1 MAC 10.4.x

To enable LPR Printing in Macintosh 10.4.x, please follow the procedures below.

Open Print and Fax from the System Preferences.

With the Printing tab selected, click the “Add” button.

When the Printer Browser opens, select “IP Printer”.

In the “IP Printer” screen, please configure as below.

Protocol: Select Line Printer Daemon - LPD as the Protocol.

IP Address: Set the address to the Print Server's IP Address, for example: 192.168.2.2.

Queue: Set the queue name to lpt1.

Name: You can designate a name for the printer.

Location: You can enter the location of the printer.

Printer: Select the printer model that is attached to the Print Server.

Click “Add” to complete the printer installation.

11.4.2 MAC 10.3.x

To enable LPR Printing in Macintosh 10.3.x, please follow the procedures below.

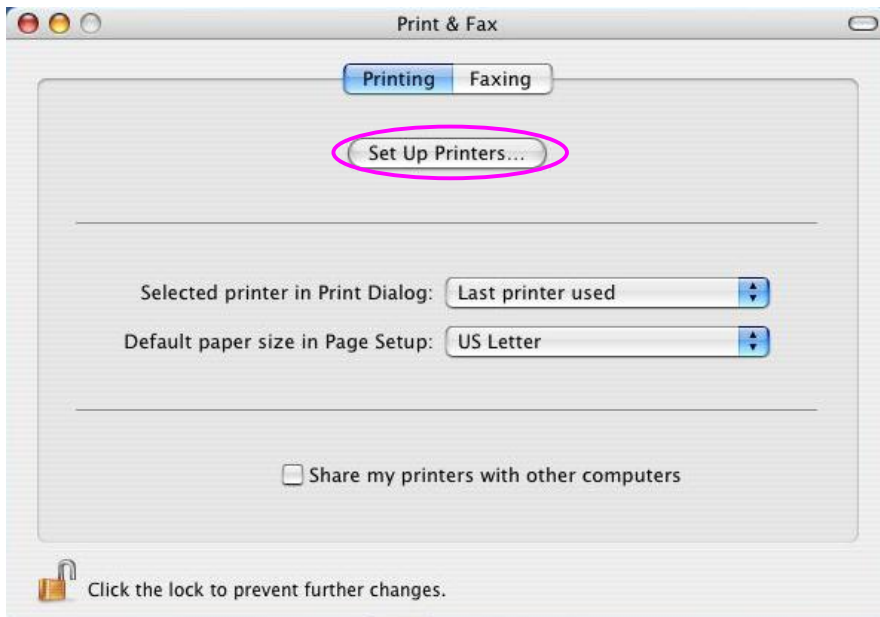
In the Desktop, click “System Preferences”.



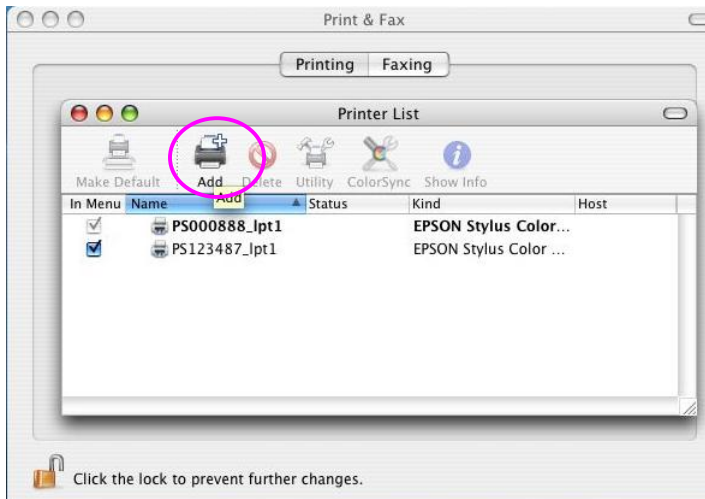
Click “Print & Fax”.



From the “Print & Fax” screen, click “Set Up Printers...”.



Click “Add” to add the new Print Server through TCP/IP.



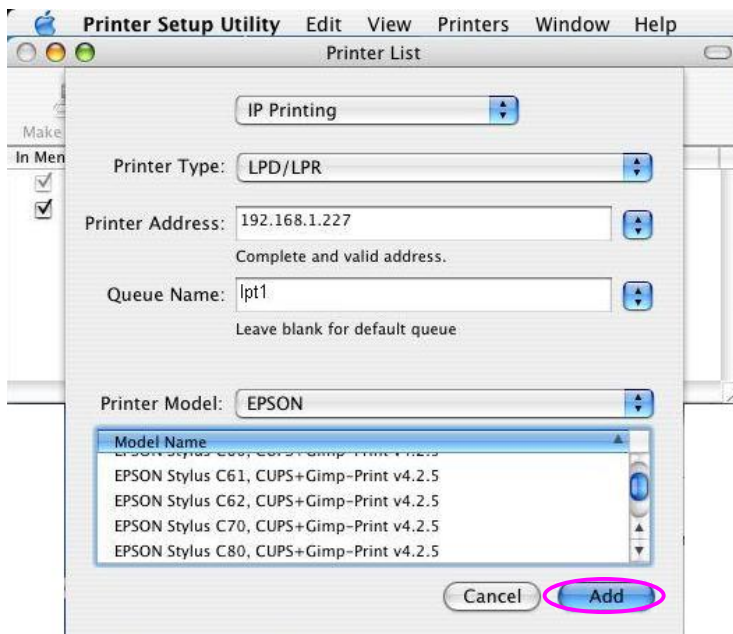
Enter the “Printer Type”, “Printer Address” and “Queue Name” and select the “Printer Model” to setup the Print Server. Click “Add” to continue.

Printer Type: LPD/LPR

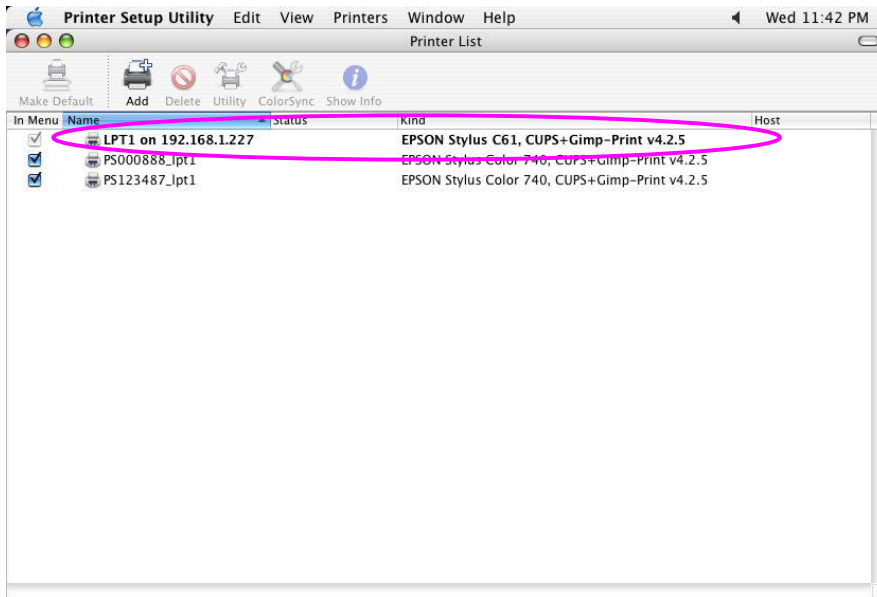
Printer Address: Input the IP Address of the Print Server

Queue Name: The queue name of the Print Server is “lpt1”.

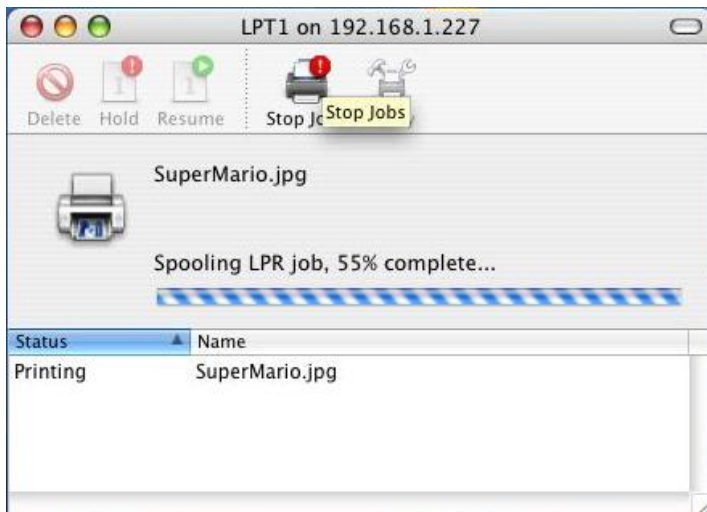
Printer Model: Select the Printer Model that is attached to the Print Server.



The Print Server is installed completely. You can see it in the “Printer List”.



You can print a file to check whether the Print Server is installed successfully.



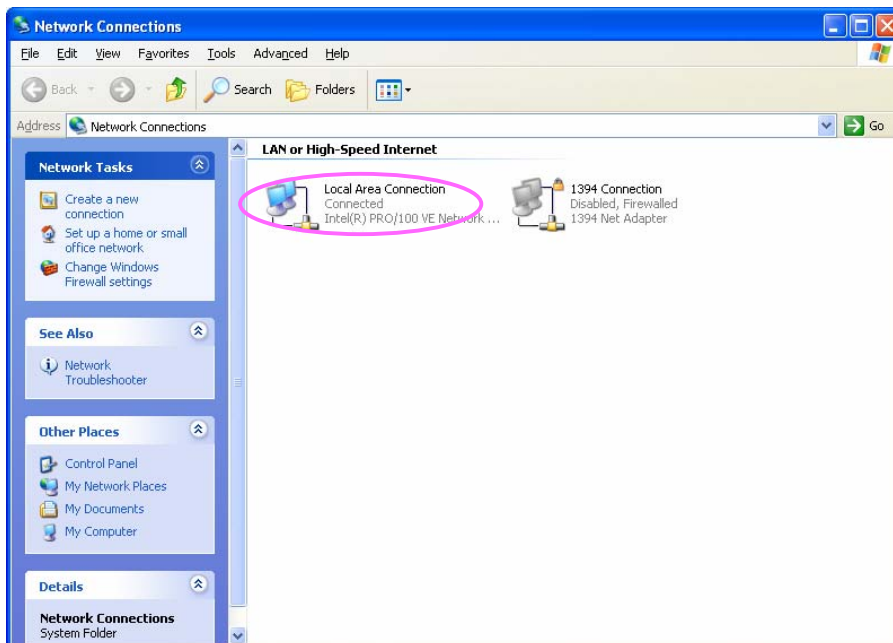
12. Windows XP SP2 Setup

In Windows XP SP2, XP SP2's firewall would block the unknown communications. This print server has allowed the communications data passed through the XP SP2's firewall.

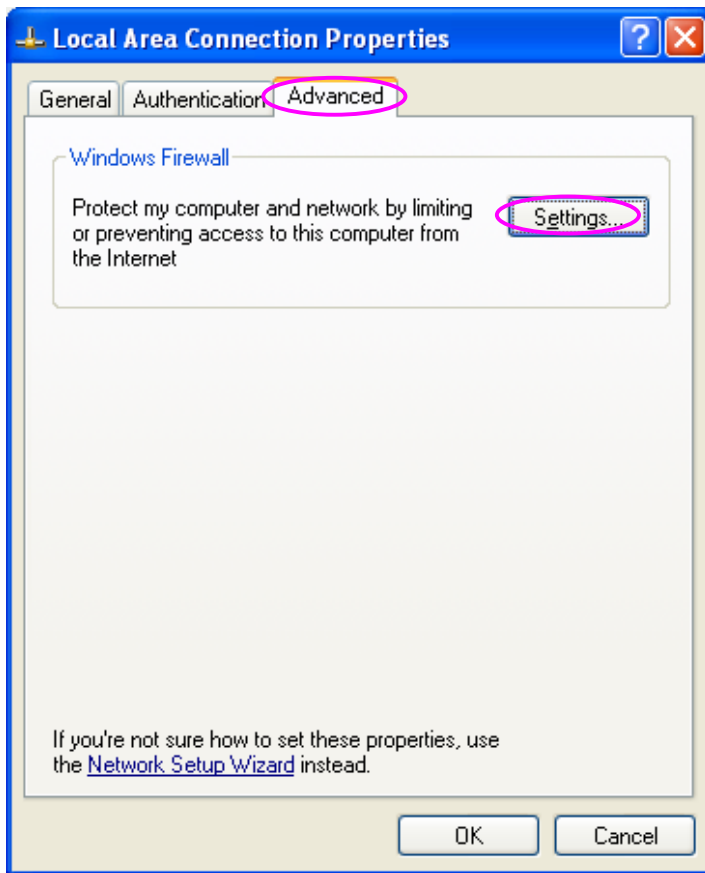
In case that you do not find any print server listed on the "Available Ports" in "Network Ports Quick Setup", please follow the steps below.

Step1. Click "Start", choose "Settings" and select "Network Connections".

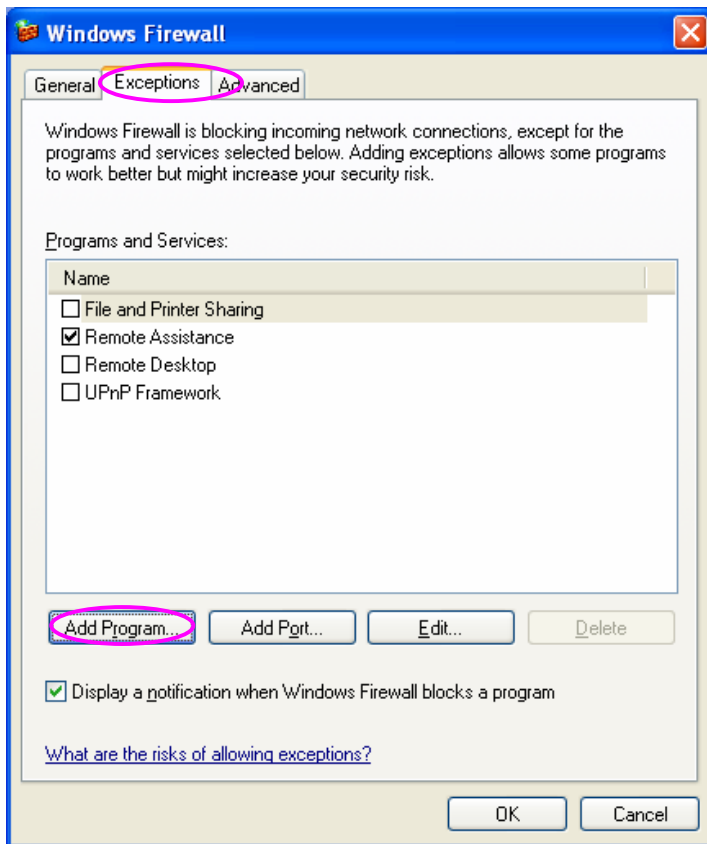
Step2. Right click "Local Area Connection" and select "Properties".



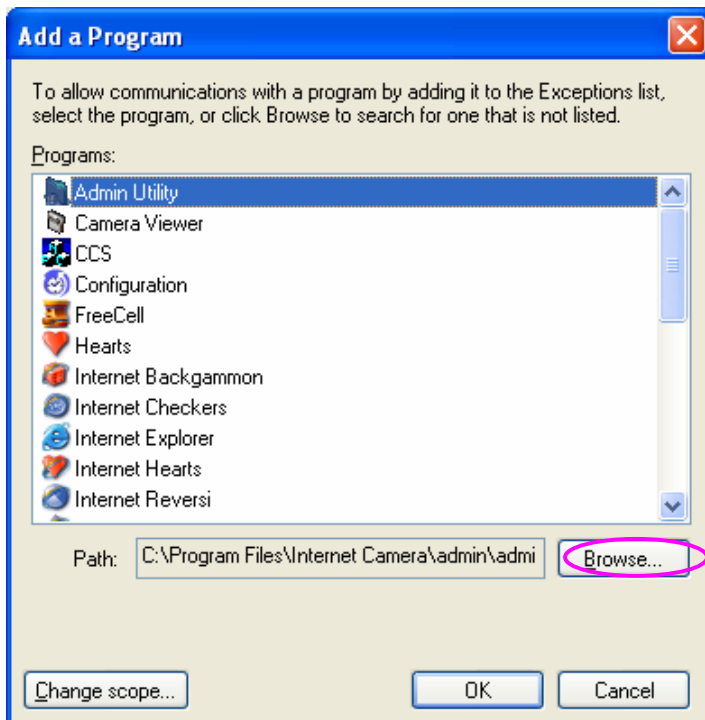
Step3. Select “Advanced” tab and click “Settings...”.



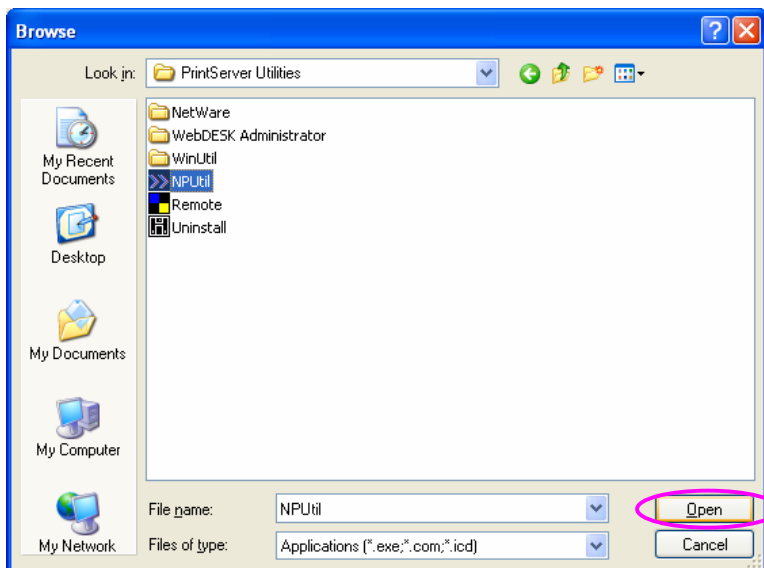
Step4. Select “Exceptions” tab and click “Add Program...”.



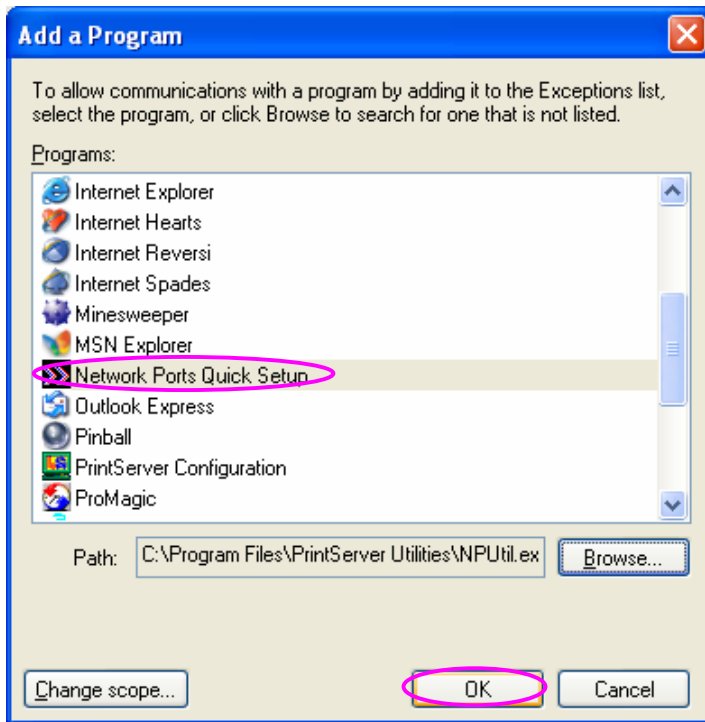
Step5. Click “Browse” to add a new program.



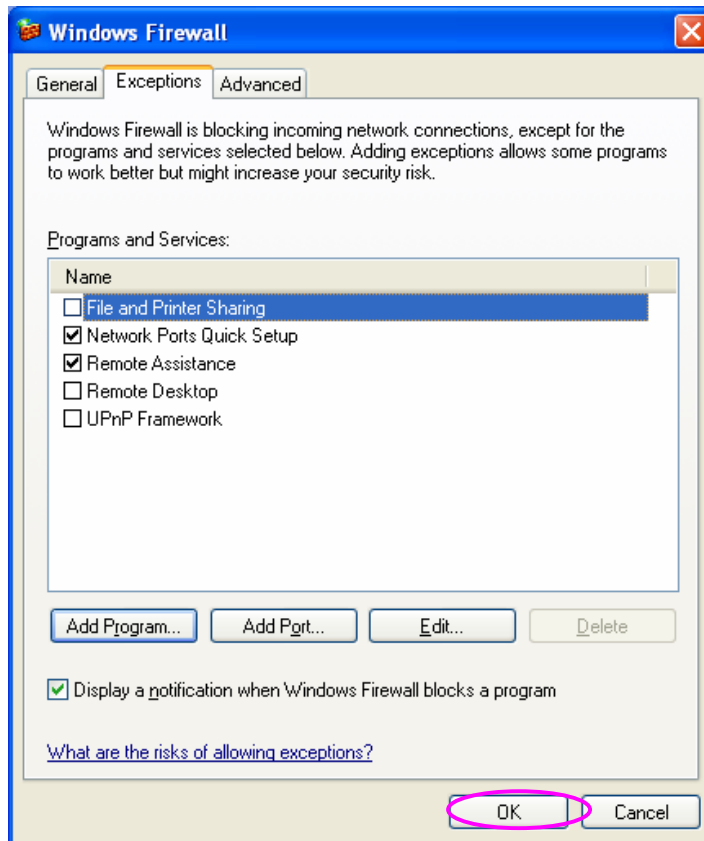
Step6. Open the “NPUtil” file from “C:\Program Files\PrintServer Utilities” (where C:\ is the system drive).



Step7. A new program “Network Ports Quick Setup” is displayed in the list, click “Ok”.



Step8. Click “Ok”. You have completed the setting. The Windows XP SP2 will allow the incoming network connections activated by the program.





EDIMAX Technology Co., Ltd.
www.edimax.com

Free Manuals Download Website

<http://myh66.com>

<http://usermanuals.us>

<http://www.somanuals.com>

<http://www.4manuals.cc>

<http://www.manual-lib.com>

<http://www.404manual.com>

<http://www.luxmanual.com>

<http://aubethermostatmanual.com>

Golf course search by state

<http://golfingnear.com>

Email search by domain

<http://emailbydomain.com>

Auto manuals search

<http://auto.somanuals.com>

TV manuals search

<http://tv.somanuals.com>