



AR-7025Um

ADSL USB Modem

Quick Installation Guide

December 2006



Copyright© by Edimax Technology Co, LTD. all rights reserved. No part of this publication may be reproduced, transmitted, transcribed, stored in a retrieval system, or translated into any language or computer language, in any form or by any means, electronic, mechanical, magnetic, optical, chemical, manual or otherwise, without the prior written permission of this company.

This company makes no representations or warranties, either expressed or implied, with respect to the contents hereof and specifically disclaims any warranties, merchantability or fitness for any particular purpose. Any software described in this manual is sold or licensed "as is". Should the programs prove defective following their purchase, the buyer (and not this company, its distributor, or its dealer) assumes the entire cost of all necessary servicing, repair, and any incidental or consequential damages resulting from any defect in the software. Further, this company reserves the right to revise this publication and to make changes from time to time in the contents hereof without obligation to notify any person of such revision or changes.

The product you have purchased and the setup screen may appear slightly different from those shown in this QIG. For more detailed information about this product, please refer to the User's Manual on the CD-ROM. The software and specifications subject to change without notice. Please visit our web site www.edimax.com for the update. All right reserved including all brand and product names mentioned in this manual are trademarks and/or registered trademarks of their respective holders.

Linux Open Source Code

Certain Edimax products include software code developed by third parties, including software code subject to the GNU General Public License ("GPL") or GNU Lesser General Public License ("LGPL"). Please see the [GNU](http://www.gnu.org) (www.gnu.org) and [LPGL](http://www.gnu.org) (www.gnu.org) Web sites to view the terms of each license.

The GPL Code and LGPL Code used in Edimax products are distributed without any warranty and are subject to the copyrights of their authors. For details, see the GPL Code and LGPL Code licenses. You can download the firmware-files at <http://www.edimax.com> under "Download" page.

- ※ The product you have purchased and the setup screen may appear slightly different from those shown in this QIG. For more detailed information about this product, please refer to the User's Manual on the CD-ROM.
- ※ Software and specifications subject to change without notice. Please visit our web site for the update.
- ※ All rights reserved. Trademarks or registered trademarks are the property of their respective

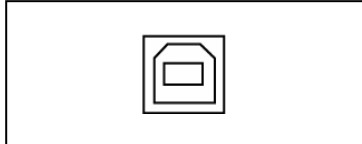
1. Hardware Indicators

1.1 LED Descriptions

- When modem is establishing the connection, the LED will be blinking.
- When modem is connected, the LED will be on steadily.

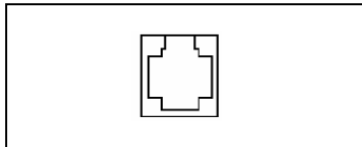
1.2 Front Panel

Connect this connector with Type-B end of USB cable.



1.3 Rear Panel

Connect this connector with RJ-11 cable.



2. Package Contains

Open the shipping carton and carefully remove all items. In addition to this quick installation guide, ascertain that you have:

- ADSL Modem
- RJ-11 Cable
- USB Cable
- Software driver CD

3. Hardware Installation

- 1) Connect the provided RJ-11 cable into **LINE** port on the rear panel of the modem and insert the other end to splitter or wall phone jack.
- 2) Connect the provided USB cable into **USB** port on the front panel of the modem and insert the other end to PC or Notebook.

4. Driver Installation

4.1 Before You Start

The following information may be required for software installation. Contact your DSL service provider before proceeding with software installation.

- IP Address Settings – the software installation process allows the server to dynamically assign IP Address settings. If your application requires static setting of specific address information you will need to know:

IP Address

Subnet Mask (for Bridged Ethernet applications only)

Default Gateway (for Bridged Ethernet applications only)

- Name Server Information – the software installation process allows the server to dynamically assign Name Server Address settings. If your application requires static setting of specific address information you will need to know:

Primary DNS Address

Secondary DNS Address

Primary WINS Address

Secondary WINS Address

- Type of Driver to be installed – WAN and LAN software drivers are supported.

Note: Required if not using default value

- ATM Virtual Path ID (VPI)

Note: Required if not using default value

- ATM Virtual Circuit ID (VCI)

Note: Required if not using default value

- Encapsulation type

Note: Required if not using default value

- Modulation type

Note: Required if not using default value

- User Name (for PPP applications only)

- Password (for PPP applications only)

4.2 Installing USB ADSL Modem

Step 1: When system detect new hardware, the Microsoft Windows “**Found New Hardware Wizard**” will be displayed, click “**Cancel**”.



Step 2: Insert “ADSL MODEM Driver CD”, the front page of Easy Setup window will be appeared,



Install Driver: Click here to install USB ADSL modem driver.


User Manual “Conexant AccessRunner USB ADSL”: Click here to read user’s manual.

Acrobat: Click here to install Acrobat Reader 6.0.

Panda: Click here to start Anti Virus program.

Step 3: Click “Install Driver”, and then select the country you are at,



PS. If your country is not on the list, please click “” to next page. Select “Other”, and then go to **Step 10** to set your modem.



Step 4: After country selecting, the window below will appear. Select the appropriate ISP, and then click “▶▶” to next page.



Step 5: Enter your account “User Name, Password and Password Confirm” then click “▶▶” to next page,



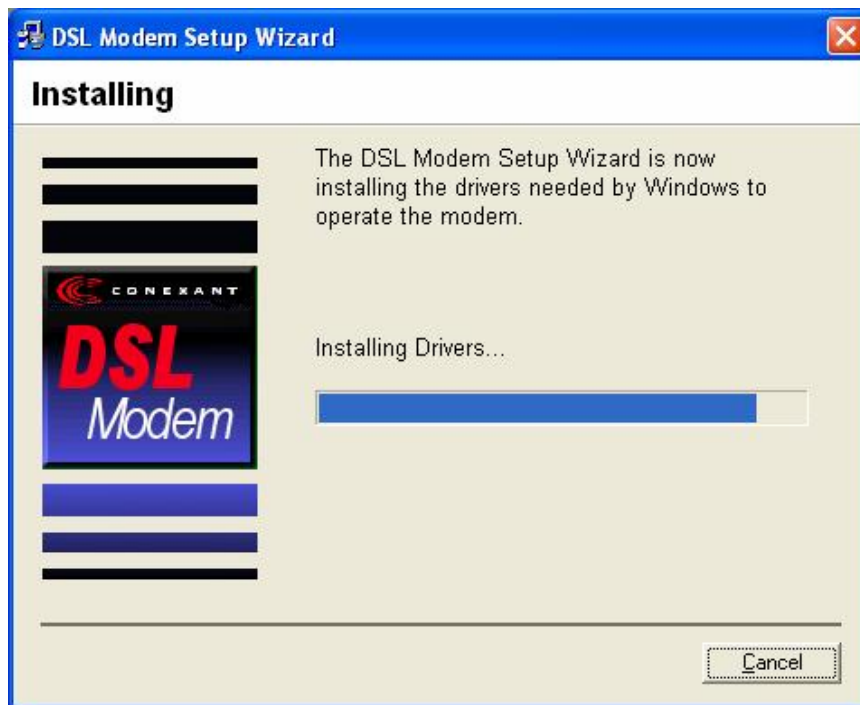
Step 6: Confirm modem settings and click “▶▶” to next page,



Step 7: Software kit searches available USB modem,



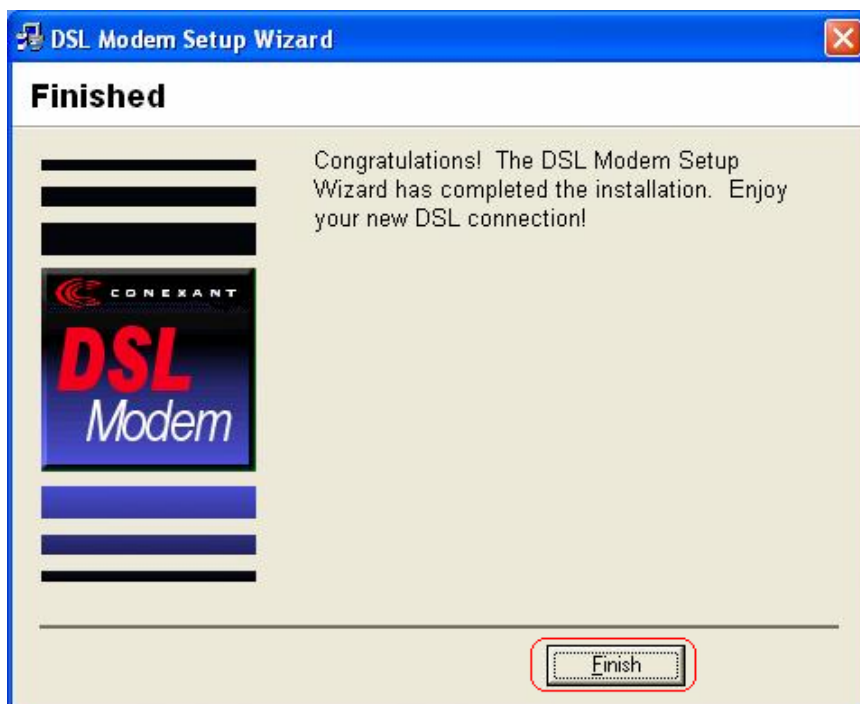
Step 8: The **Installing** window will be displayed indicating that the drivers are being installed.



Step 9: The system must be rebooted to have the new settings take effect.

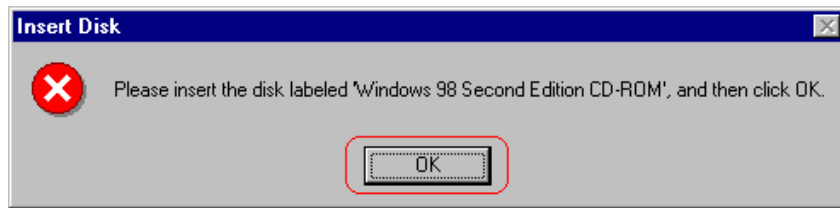
[For Windows XP, 2000, and ME]

In **Windows XP, 2000, and ME** Operating System, the Easy Setup program will automatically reboot your computer. Once the PC has rebooted, Installation of the USB Modem is completed. The **Finished** window will be displayed indicating the installation has been completed. Click "**Finish**".

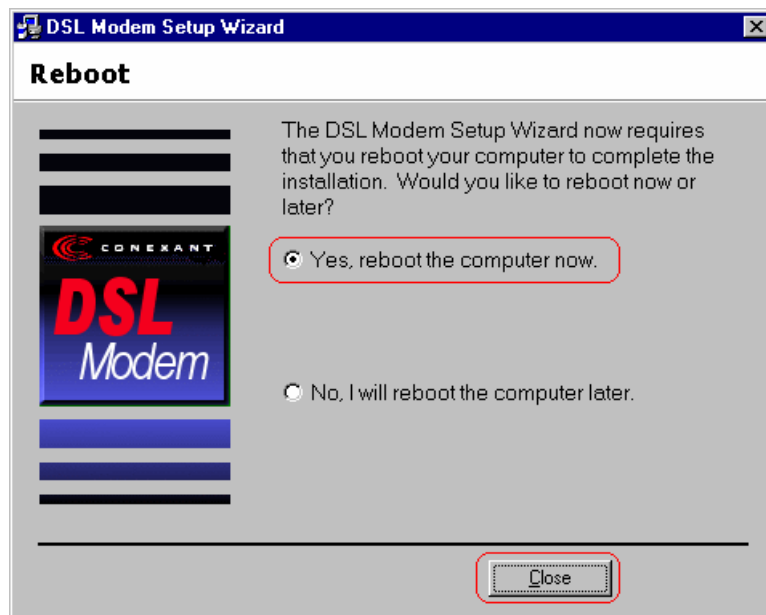


[For Windows 98SE]

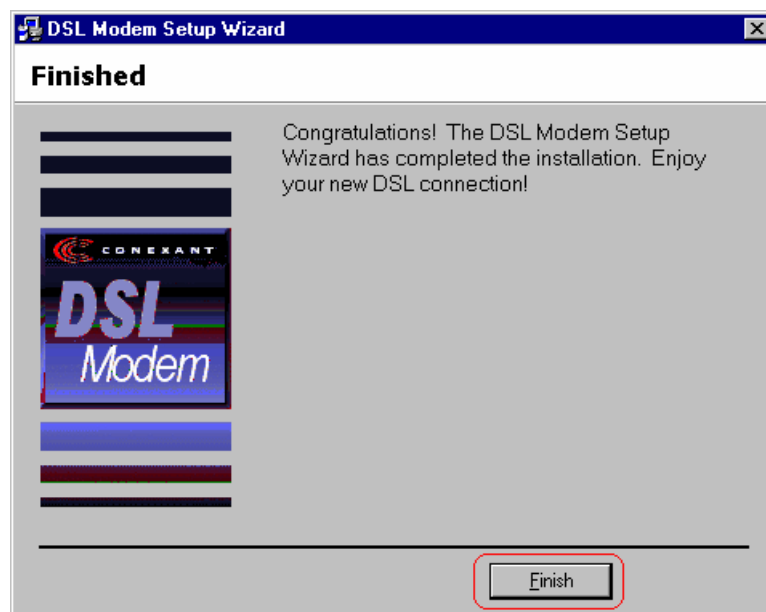
For **Windows 98SE**, during the installation process, the system will ask you to insert Windows 98SE installation CD, please insert the CD and click **“OK”**.

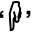


The **Reboot** window will appear. Remove all disks from their drives, select **“Yes, reboot the computer now”**, and click **“Close”** to reboot.



Once the PC has rebooted, the **Finished** window will be displayed indicating the installation has been completed. Click **“Finish”**.

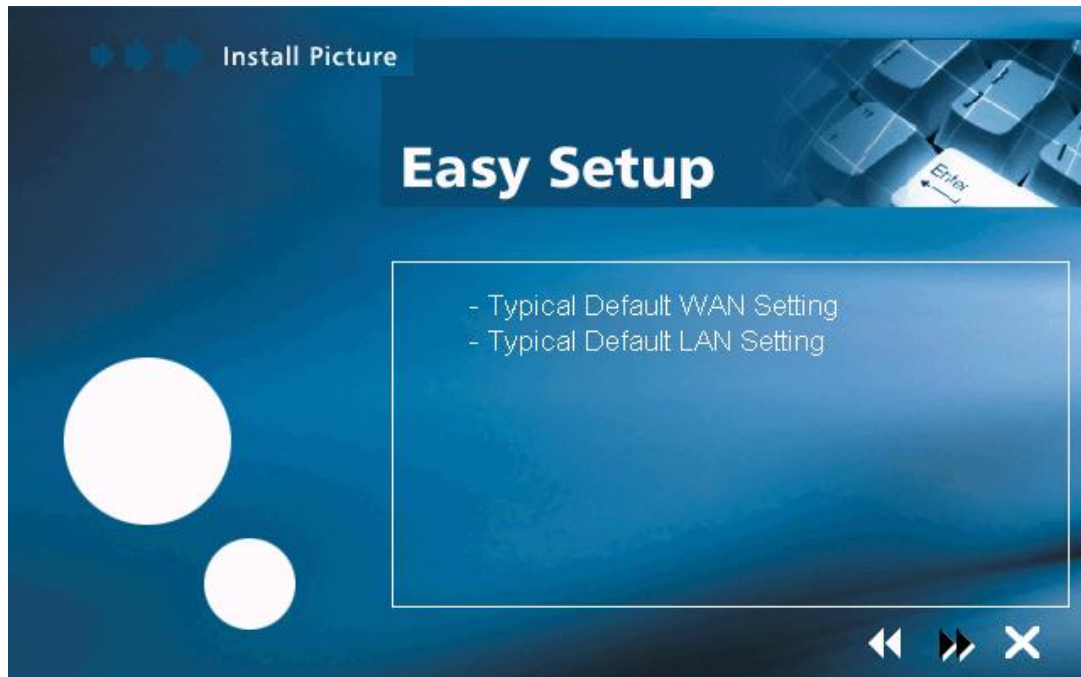


Step 10: If your country is not on the list, please click “” to next page and select “**Other**”,



a) After you select ”**Other**”, the window below will appear, you must refer to the following table before you select the connection type,

Connection Type	Encapsulation and Multiplexing method	Network Information
WAN	PPP over ATM LLC (RFC 2364) PPP over ATM NULL (RFC 2364) PPP over Ethernet (RFC 2516)	Internet Account information: ● User name ● Password
LAN	Classical IP over ATM (RFC 1577) IP over ATM Bridged LLC (RFC 2684) IP over ATM Bridged VC (RFC 2684) IP over ATM Routed LLC (RFC 2684) IP over ATM Routed VC (RFC 2684)	TCP/IP information: ● IP address ● Subnet mask ● DNS ● Gateway



- b) After you select the connection type, the window below will appear, and then confirm modem settings. All settings here are default, it **might not** correct settings for your connection, double check your ISP for the settings and go to **“Accessing Communication Settings on Windows”** to modify the settings.

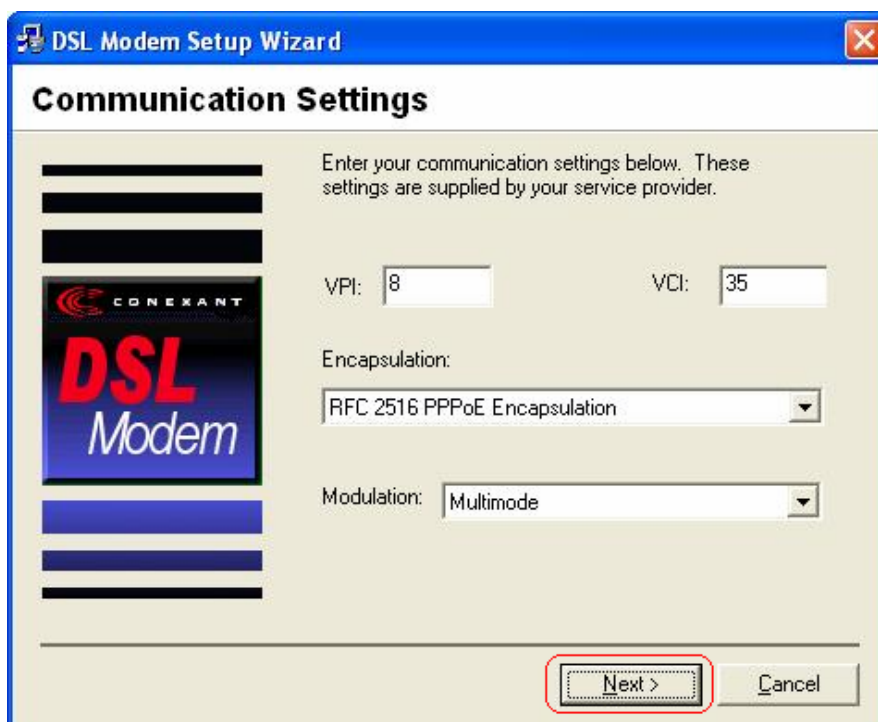


4.3 Accessing Communication Settings on Windows

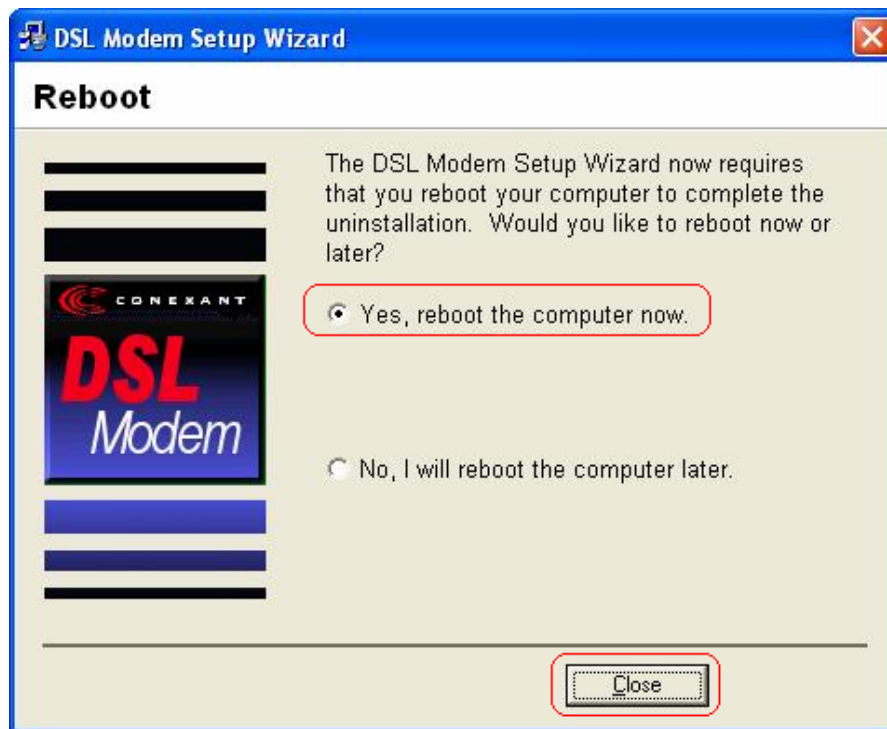
Step 1: From your PC desktop, click **Start**→**Program**→**Conexant DSL Modem**→ **Configure**.



Step 2: The “**Communication Settings**” Window will be displayed. Make the necessary changes to the VPI, VCI, Encapsulation type and/or Modulation type and click “**Next>**”.



Step 3: The system must be rebooted to have the new settings take effect, therefore the **Reboot** window will appear. Remove all disks from their drives, select “**Yes, reboot the computer now**”, and click **Close** to reboot.



PS. For the detail information, please refer to the manual in the provided CD.

Federal Communication Commission Interference Statement

FCC Part 68

This equipment complies with Part 68 of the FCC Rules. On the bottom of this equipment is a label that contains the FCC Registration Number and Ringer Equivalence Number (REN) for this equipment. You must provide this information to the telephone company upon request. The REN is useful to determine the quantity of devices you may connect to the telephone line and still have all of those devices ring when your number is called.

In most, but not all areas, the sum of the REN of all devices connected to one line should not exceed five (5.0). To be certain of the number of devices you may connect to your line, as determined by the REN, you should contact your local telephone company to determine the maximum REN for your calling area.

If the modem causes harm to the telephone network, the telephone company may discontinue your service temporarily. If possible, they will notify you in advance.

But if advance notice isn't practical, you will be notified as soon as possible. You will be advised of your right to file a complaint with the FCC.

The telephone company may make changes in its facilities, equipment, operations, or procedures that could affect the proper operation of your equipment.

If they do, you will be notified in advance to give you an opportunity to maintain uninterrupted telephone service.

If you experience trouble with this modem, please contact your dealer for repair/warranty information. The telephone company may ask you to disconnect this equipment from the network until the problem has been corrected or you are sure that the equipment is not malfunctioning.

This equipment may not be used on coin service provided by the telephone company. Connection to party lines is subject to state tariffs.

FCC Part 15

This equipment has been tested and found to comply with the limits for a Class B digital device, pursuant to Part 15 of FCC Rules. These limits are designed to provide reasonable protection against harmful interference in a residential installation. This equipment generates, uses, and can radiate radio frequency energy and, if not installed and used in accordance with the instructions, may cause harmful interference to radio communications. However, there is no guarantee that interference will not occur in a particular installation. If this equipment does cause harmful interference to radio or television reception, which can be determined by turning the equipment off and on, the user is encouraged to try to correct the interference by one or more of the following measures:

- 1.Reorient or relocate the receiving antenna.
- 2.Increase the separation between the equipment and receiver.
- 3.Connect the equipment into an outlet on a circuit different from that to which the receiver is connected.
- 4.Consult the dealer or an experienced radio technician for help.

FCC Caution

This equipment must be installed and operated in accordance with provided instructions and a minimum 20 cm spacing must be provided between computer mounted antenna and person's body (excluding extremities of hands, wrist and feet) during wireless modes of operation.

This device complies with Part 15 of the FCC Rules. Operation is subject to the following two conditions: (1) this device may not cause harmful interference, and (2) this device must accept any interference received, including interference that may cause undesired operation.

Any changes or modifications not expressly approved by the party responsible for compliance could void the authority to operate equipment.

Federal Communication Commission (FCC) Radiation Exposure Statement

This equipment complies with FCC radiation exposure set forth for an uncontrolled environment. In order to avoid the possibility of exceeding the FCC radio frequency exposure limits, human proximity to the antenna shall not be less than 20cm (8 inches) during normal operation.

The antenna(s) used for this transmitter must not be co-located or operating in conjunction with any other antenna or transmitter.

R&TTE Compliance Statement

This equipment complies with all the requirements of DIRECTIVE 1999/5/EC OF THE EUROPEAN PARLIAMENT AND THE COUNCIL of March 9, 1999 on radio equipment and telecommunication terminal Equipment and the mutual recognition of their conformity (R&TTE).

The R&TTE Directive repeals and replaces in the directive 98/13/EEC (Telecommunications Terminal Equipment and Satellite Earth Station Equipment) As of April 8, 2000.

Safety

This equipment is designed with the utmost care for the safety of those who install and use it. However, special attention must be paid to the dangers of electric shock and static electricity when working with electrical equipment. All guidelines of this and of the computer manufacture must therefore be allowed at all times to ensure the safe use of the equipment.

EU Countries Intended for Use

The ETSI version of this device is intended for home and office use in Austria, Belgium, Denmark, Finland, France, Germany, Greece, Ireland, Italy, Luxembourg, the Netherlands, Portugal, Spain, Sweden, and the United Kingdom.

The ETSI version of this device is also authorized for use in EFTA member states: Iceland, Liechtenstein, Norway, and Switzerland.

Free Manuals Download Website

<http://myh66.com>

<http://usermanuals.us>

<http://www.somanuals.com>

<http://www.4manuals.cc>

<http://www.manual-lib.com>

<http://www.404manual.com>

<http://www.luxmanual.com>

<http://aubethermostatmanual.com>

Golf course search by state

<http://golfingnear.com>

Email search by domain

<http://emailbydomain.com>

Auto manuals search

<http://auto.somanuals.com>

TV manuals search

<http://tv.somanuals.com>