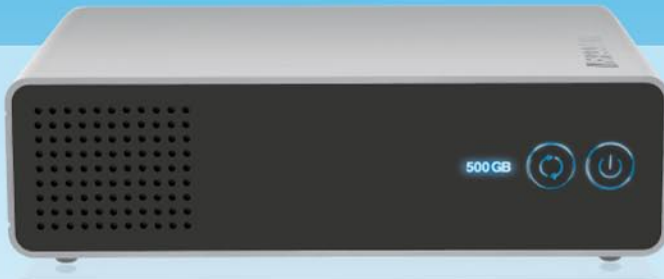


// Freecom

MANUAL



HARD DRIVE PRO

EXTERNAL HARD DRIVE / 3.5 " / USB 2.0 / ESATA
WIN & MAC

Dear user!

Thank you for choosing the **Freecom Hard Drive Pro** external hard drive. For optimal use and performance we advise you to read this manual carefully before using this product.

Freecom Technologies • Germany
www.freecom.com

Contents of the box

Please check the contents of the box. The following items should be included:

- Freecom Hard Drive Pro
- power adaptor & power cord
- eSATA interface cable
- USB interface cable
- CD with manual, application software and safety manual
- Quick Install Guide

Warning !

All rights reserved. The products named in this manual are only used for identification purposes and may be trademarks or registered trademarks of the respective companies. This device was designed for home or office use.

Warning! This device is equipment complying with EN55022 class B.

Freecom cannot be made liable for any damages, loss of data or damage following thereof -whatsoever (including, without limitation, damages for loss of business profits, business interruption, loss of business information, or other pecuniary loss) arising out of the use of or inability to use this Freecom product, even if Freecom has been advised of the possibility of such damages.

We reserve the right to upgrade our products in keeping with technological advances.

User manual

General Information.....	page 4
Precautionary measures	page 5
Freecom Hard Drive Pro external hard drive	page 6

Chapter 1:

Installation of the Freecom Software (PC).....	page 7
--	--------

Chapter 2:

Hardware installation.....	page 12
----------------------------	---------

Chapter 3:

Driver installation	page 14
---------------------------	---------

Chapter 4:

Daily use of the Freecom Hard Drive Pro with Freecom Personal Media Suite software	page 14
---	---------

Chapter 5:

The User Interface of the Freecom Personal Media Suite (PC).....	page 15
--	---------

Chapter 6:

Using the Freecom Backup Software (PC).....	page 29
---	---------

Chapter 7:

Partitioning your Freecom Hard Drive Pro (PC).....	page 41
Partitioning your Freecom Hard Drive Pro (Mac).....	page 49

Chapter 8:

Troubleshooting	page 50
-----------------------	---------

General Information

The following hardware and software requirements must be fulfilled to ensure trouble-free operation.

System requirements

To use the Freecom Hard Drive Pro, you will require the following components:

PC:

- Intel/AMD CPU 700 MHz or higher
- 256 MB RAM or higher
- CD-ROM drive for installing software
- Available eSATA, USB 2.0 or USB 1.1 port*
- Internet connection for online warranty registration, driver/software updates and downloads
- Operating system: Windows 2000, Windows XP

Mac:

- Mac G3/G4/G5 or Power Book G3/G4 or higher with USB interface or eSATA
- 256 MB RAM or higher
- CD-ROM drive for installing software
- Available eSATA, USB 2.0 or USB 1.1 port*
- Internet connection for online warranty registration, driver/software updates and downloads
- Operating system: Mac OS X v10.1 or higher

* USB 2.0 is downwards compatible to USB 1.1.

Precautionary measures

To ensure that your Freecom Hard Drive Pro functions properly, please take note of the following precautions. If these are not followed, you may void your warranty and damage the Freecom Hard Drive Pro.

- Safely remove the Freecom Hard Drive Pro via your operating system (the "unplug or eject hardware" option in the Windows taskbar) before disconnecting the USB cable or power cable and before switching off the device. Failing to do so may result in data loss.
- Do not drop the Freecom Hard Drive Pro or expose it to other kinds of sudden mechanical shocks as this may result in data loss and damage to the hard drive.
- Do not use the Freecom Hard Drive Pro when the ambient temperature is below 10°C or above 35°C.
- If the Freecom Hard Drive Pro is moved from a cool environment to a warmer environment, please allow the drive to acclimatize to the ambient temperature before operating the device. Failing to do so may lead to condensation within the drive enclosure, which in turn may cause the drive to malfunction.
- Do not place liquids or drinks on the Freecom Hard Drive Pro. When liquids are spilled and get in contact with the electronics within the drive enclosure, it will damage the drive and will cause the drive to malfunction.
- Do not use the Freecom Hard Drive Pro in a dusty environment. Dust inside the enclosure may damage the internal electronics and result in drive malfunction.
- Only use the power adapter that was supplied with the Freecom Hard Drive Pro.
- Opening the Freecom Hard Drive Pro will void the warranty.
- Since USB 2.0 is backwards compatible with USB 1.1, the Freecom Hard Drive Pro can be connected to all USB ports. When connected to a USB 1.1 port, however, the performance (data transfer rate) of the Freecom Hard Drive Pro will be much lower than when the drive is connected to a USB 2.0 port.
- When using the Freecom Personal Media Suite software, please be aware that all files in the SYNC folder on the Freecom Hard Drive Pro are linked to the original files on your PC or network. If you delete a file in the SYNC folder, its original will be deleted during the next synchronization, too! To avoid this, you have to 'Split From Original' the file prior to deleting it. Please refer to chapter 5 for further information on Freecom SYNC and Microsoft Briefcase.

Freecom Hard Drive Pro external hard drive

For your convenience, the Freecom Hard Drive Pro has been partitioned (1 partition) and pre-formatted (FAT32 file system). The FAT32 format ensures maximum interchangeability of the Freecom Hard Drive Pro between different computers. Should you choose to format the Freecom Hard Drive Pro in another file system (e.g. NTFS), please be aware of possible problems when connecting the Freecom Hard Drive Pro to another computer than the one you used for formatting.

The Freecom Hard Drive Pro features a super fast eSATA connection which allows transfer speeds up to 3Gbit/s. For connectivity, a hi-speed USB 2.0 interface is added, allowing you to connect the Freecom Hard Drive Pro over USB whenever an eSATA connection is not available. The combination of having an eSATA and USB 2.0 interface on the Freecom Hard Drive Pro makes it ideally suitable for data-storage, file sharing, backup, archiving, audio and video playback and editing and all applications that need fast file access.

Recommended sequence of installation

1. Install Freecom Personal Media Suite Software. (PC)
2. Connect the interface cable and the power cable to the drive and plug the power supply unit into the socket. Plug the interface cable into the appropriate slot of your computer.
3. Switch on the Freecom Hard Drive Pro.

Please refer to chapters 1-5 for a detailed description of the hardware and software installation.

Chapter 1: Installation of the Freecom software (PC)

Before you can use the Sync button on your Freecom Hard Drive Pro, you need to install the Freecom Personal Media Suite software first.

Note: To use the functions of the Freecom Personal Media Suite described in this handbook, your Freecom Hard Drive Pro has to be connected to your PC.

The sync button will only work with certain eSATA host controllers when connected over eSATA. In some cases the sync button will not work when the device is connected via eSATA to the computer. This is related to a compatibility issue of the eSATA host controller. Should this be the case, the synchronization process can be initiated from the Freecom Personal Media Suite by clicking the "sync now" button. When connected over USB, the sync button works on all USB hosts that have the bundled Freecom Personal Media Suite installed.

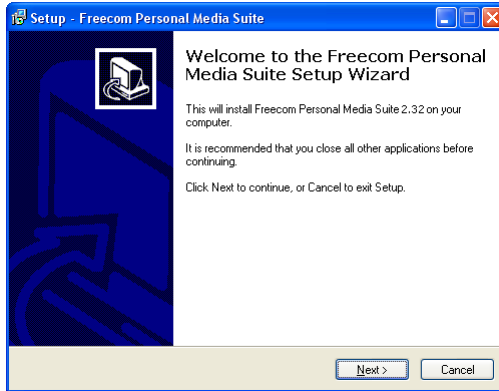
1.1 Installation of the Freecom Personal Media Suite

1. Insert the Freecom Hard Drive Pro Software & Manual CD into your CD drive. The Freecom start menu opens:

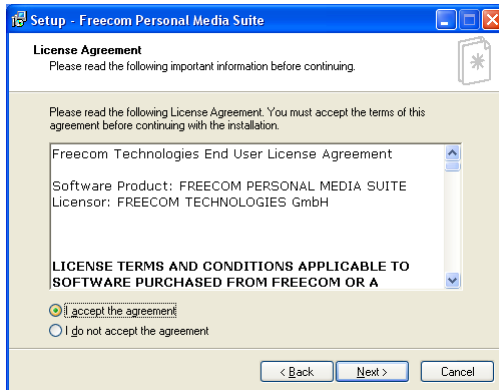


In case the software does not open automatically, please click on "Start.exe" in the main directory of the CD.

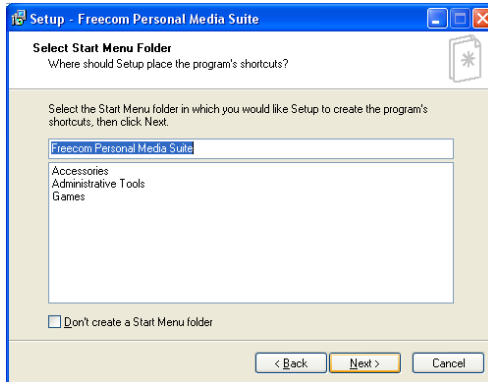
2. Click on "Software Installation" and then "Personal Media Suite". The installation of the Freecom Personal Media Suite starts now. Follow the instructions on the screen, confirm with "Next" in order to continue with the installation.



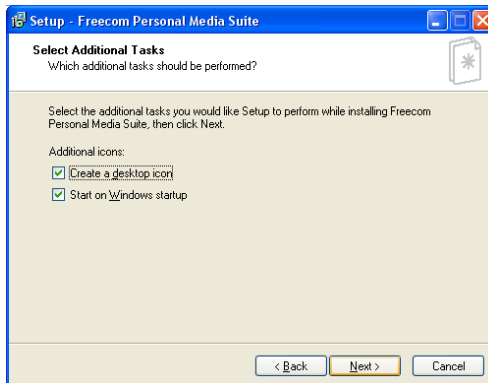
3. Please read the license agreement carefully. To accept the license agreement, confirm with "Yes". Note: Clicking on "No" ends the installation. Select the target folder and program folder in the start menu in which the Freecom Personal Media Suite symbol is to appear.



4. You can select a different target folder for the program files by selecting another folder on your hard drive.



- In the dialogue "Options" you can select whether to create a link to the Freecom Personal Media Suite Software on the desktop and whether the program should be started automatically when starting Windows. It is recommended to select both options for better operation of the Freecom Personal Media Suite.



- Click on "Next" to start the installation. All necessary program files are now written on the hard drive of your computer.
- In the last window, you will be asked whether you want to start Freecom Personal Media Suite now. It is recommended to select this option so that you can configure the software for your Freecom Hard Drive Pro. Please click on "Finish".

1.2 Deinstallation of the Freecom Personal Media Suite

In order to remove the Freecom Personal Media Suite from your computer, please proceed as follows:

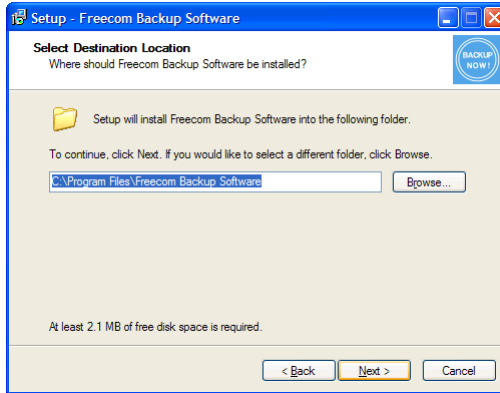
- In the "Start" menu, please click on "Program files" - "Freecom Personal Media Suite".
- Select "Uninstall Freecom Personal Media Suite". The software is now removed from your computer.

1.3 Installation of the Freecom Backup Software

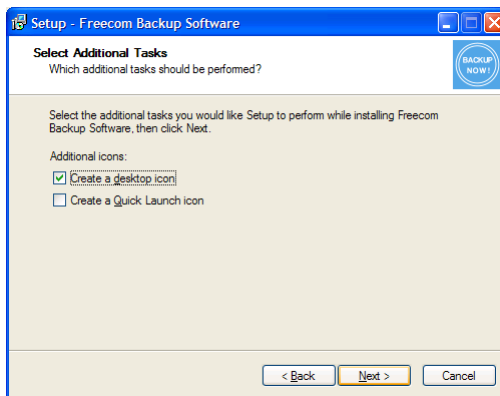
1. Insert the Software & Manual CD into your CD drive. The Freecom start menu opens.
In case the software does not open automatically, please click on "Start.exe" in the root directory of the CD.
2. Click on "Software Installation" and then "Backup Software". The installation of the Freecom Backup Software is started then. Follow the instructions on the screen, confirm with "Next" in order to continue with the installation.



3. Please read the licensing agreement carefully. To accept the licensing agreement, confirm with "Yes". Note: Clicking on "No" ends the installation. Select the target folder and program folder in the start menu in which the Freecom Backup Software symbol is to appear.
4. You can select a different target folder for the program files by selecting another folder on your hard disk.
5. In the "Options" dialogue you can select whether to create a link to the Freecom Backup Software on the desktop and whether a symbol should be placed for the program in the Quick Launch bar. It is recommended to select both options for better operation of the Freecom Backup Software.



6. Click on "Next" to start the installation. All necessary program files are now written to the hard disk of your computer.
7. In the last window, you are asked if you want to start Freecom Backup Software now. If you want to create a backup of your data right away, click on "Finish". If you want to start the software later, then remove the check mark at "Start Freecom Backup Software" and then click on "Finish".



1.4 Uninstallation of the Freecom Backup Software

In order to remove the Freecom Backup Software from your computer, please proceed as follows:

1. In the "Start" menu go to "Settings" – "Control Panel" – "Software".
2. Select the "Freecom Backup Software" entry and then click on "Remove". Acknowledge that you really want to remove the software. The Freecom Backup Software is now removed from your computer.

Chapter 2: Hardware Installation

Before connecting the cables make sure the Freecom Hard Drive Pro is switched off (See Chapter 2.2).



1. Connect the interface cable (USB or eSATA) to the Freecom Hard Drive Pro.



2. Connect the cable of the power supply to the Freecom Hard Drive Pro and the power supply itself to the socket.



3. Connect the interface cable to the interface port of your computer.



4. Switch on the Freecom Hard Drive Pro by pushing the power button located at the front of the device.

Note: Since USB 2.0 is backwards compatible with USB 1.1, the Freecom Hard Drive Pro can be connected to all USB ports. When connected to a USB 1.1 port, however, the performance (data transfer rate) of the Freecom Hard Drive Pro will be much lower than when the drive is connected to a USB 2.0 port.

For optimal performance, the Freecom Hard drive pro should be connected to an eSATA port.

2.1 Sync Button

The front panel of the Freecom Hard Drive Pro contains the Sync button.



2.2 Power Button

To turn on the Freecom Hard Drive Pro, push the power button located on the front panel of the device. Note that the device will only turn on if the following conditions are met: the device is powered by the power adapter; it is connected with the interface cable (eSATA / USB) to a computer; the computer is running. The Freecom Hard Drive Pro will turn off automatically when the computer it is connected to is turned off or when the interface or power cable is disconnected. On top of that the device can also be turned off manually by pressing and holding the power button for 3 consecutive seconds. The device can manually be turned on again by pressing the power button once, but only when the computer it is connected to is running.



Attention! (only USB) Before switching off the Freecom Hard Drive Pro manually, make sure to safely remove the Freecom Hard Drive Pro via your operating system (the „unplug or eject hardware“ option in the Windows taskbar). Failing to do so may result in loss of data.

Chapter 3: Driver installation

Under Windows 2000 / XP and Mac OS X a separate Freecom driver is not required. The drivers will be installed automatically by the operating system after plugging in the Freecom Hard Drive Pro into the USB/eSATA port of the computer.

Chapter 4: Daily use of the Freecom Hard Drive Pro

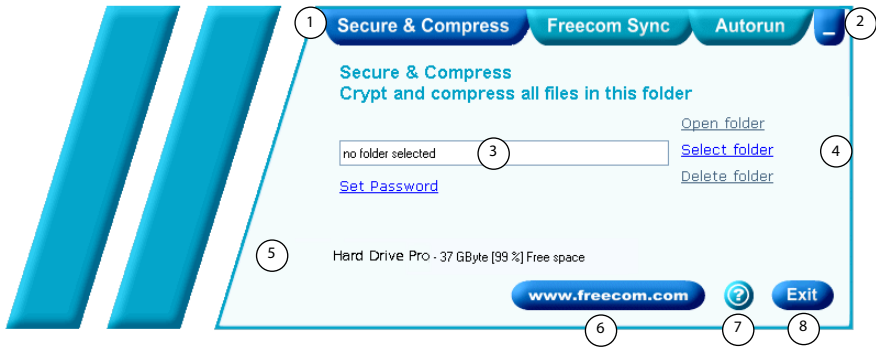
The combination of having an eSATA and USB 2.0 interface on the Freecom Hard Drive Pro makes it ideally suitable for data-storage, file sharing, backup, archiving, audio and video playback and editing and all applications that need fast file access.

4.1 Daily use of the Freecom Hard Drive Pro with Freecom Personal Media Suite software (PC)

Creating a SYNC folder (PC)

After the installation of the Freecom Hard Drive Pro is finished, the Freecom SYNC folder will be created automatically when Freecom Personal Media Suite was installed before. If not, please refer to the paragraph "Creating a new SYNC folder" in Chapter "The User Interface of the Freecom Personal Media Suite".

Chapter 5: The User Interface of the Freecom Personal Media Suite (PC)



- 1 Tabs for configuration of the Freecom Personal Media Suite components
 - Secure & Compress
 - Freecom SYNC
 - Autorun
- 2 Minimizes Freecom Personal Media Suite in the taskbar
- 3 Input field (also shows the selected folder)
- 4 User menu
- 5 Connected Freecom Hard Drive Pro (drive letter + available memory capacity)
- 6 Link to www.freecom.com. Click on this to access the Freecom homepage. Here you can find further information about your Freecom Hard Drive Pro.
- 7 Quick Help for Freecom Personal Media Suite
- 8 Minimizes Freecom Personal Media Suite in the system tray.

5.1 Configuration

To open the configuration menu, please right-click on the Freecom Personal Media Suite icon in the system tray and select "Configuration":

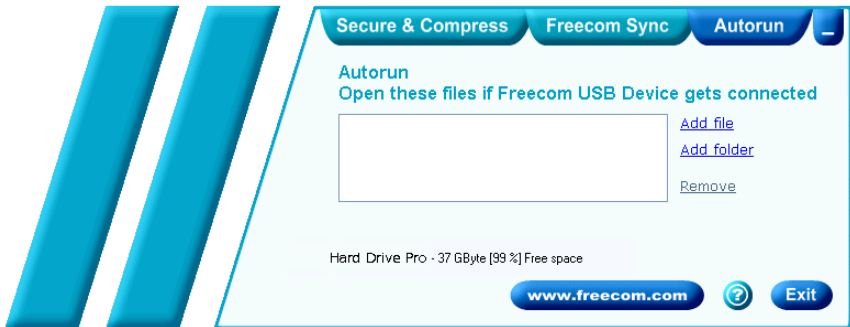
1. "Show splash screen": Deactivate this function to prevent the display of the start screen when starting the program.
2. "Start program on Windows start": Starts the Freecom Personal Media Suite in the background with every Windows start. You will know this by the icon of the Freecom Personal Media Suite in the system tray.

Important: We recommend to leave the function "Start program on Windows start" activated under all circumstances in order to be able to use all the functions of the Freecom Personal Media Suite (e.g. "Autorun", "SYNC on Freecom device plug-in")!

5.2 Autorun

The "Autorun" function enables you to open or start documents, files or programs automatically when your Freecom Hard Drive Pro is connected to your PC.

Automatically start, for example, the last document you were working on, MP3 play lists, your favourite film and much more. These files do not have to be on your Freecom Hard Drive Pro for this.



5.2.1 Adding files / folders

1. Open the Freecom Personal Media Suite and select the "Autorun" tab.
2. Add files, folders and programs to the Autorun list by either clicking on "Add file" and selecting the corresponding file or by pulling the files into the Autorun list field using drag&drop.
3. For folders, please select "Add folders" or pull a folder into the Autorun list field using drag&drop.
4. Alternatively, you can create a new folder on your Freecom Hard Drive Pro using the "Add folder" function by clicking on "Create new folder", naming the folder and selecting it.

5.2.2 Removing files / folders from the Autorun list

1. Open the Freecom Personal Media Suite and select the "Autorun" tab.
2. Select the file or the folder to be removed in the Autorun list field.
3. Click on "Remove". The corresponding entry is removed from the list.

5.3 Secure&Compress

The Secure&Compress function serves to compress and encrypt your documents. Unauthorized access to your personal data is therefore impossible.



5.3.1 Add / Select Folders

1. Open the Freecom Personal Media Suite and select the tab "Secure&Compress".
2. Click on "Change folder" and select the folder on your Freecom Hard Drive Pro whose content is to be compressed and encrypted.
3. Alternatively, you can create a new folder to be encrypted on your Freecom Hard Drive Pro using the "Change folder" function by clicking on "Create new folder", naming the folder (e.g. "Secure") and selecting it.

In the selected folder, all files - even in sub-directories - are compressed and then encrypted.

The active Secure&Compress folder is easily recognised on your Freecom Hard Drive Pro by the "Padlock".

5.3.2 Opening the Secure&Compress folder

1. Open the Freecom Personal Media Suite and select the tab "Secure&Compress".
2. Click on "Open folder" in order to open the Secure&Compress folder.
3. If the Freecom Personal Media Suite is already open and has started minimised in the taskbar, you can also open the Secure&Compress folder with a right-click on the taskbar symbol of the Freecom Personal Media Suite:

Open
Open Secure & Compress folder «Secure»
Configuration
Exit

4. Of course you can also open the Secure&Compress folder over the Windows Explorer.

5.3.3 Encrypting files and folders

1. Open the Secure&Compress folder.
2. Pull the files or folders to be encrypted in the Secure&Compress folder using the drag&drop function. Each file is now compressed and then encrypted.
3. The first time you will be requested to enter and confirm a password. Select "Save password on this computer" if you do not want to be requested to enter a password again.
4. Alternatively, you can also right-click on the files or folders and select the Secure&Compress folder in the context menu under "Send to ...".

5.3.4 Decrypting files and folders

In order to decrypt files and folders which are in the Secure&Compress folder, please proceed as follows:

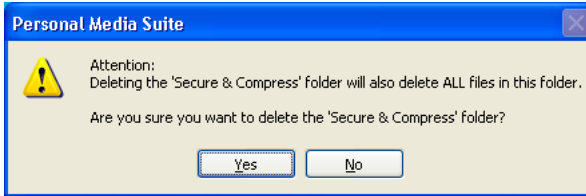
1. Open the Secure&Compress folder.
2. Select the file(s) or folder(s) to be decrypted and pull them into the target folder (e.g. with the Windows Explorer) using drag&drop.
3. Your files are now decrypted and decompressed. The encrypted original remains on the Freecom Hard Drive Pro.

5.3.5 Deleting the Secure&Compress folder

Click on "Delete folder" in order to delete the selected Secure&Compress folder.

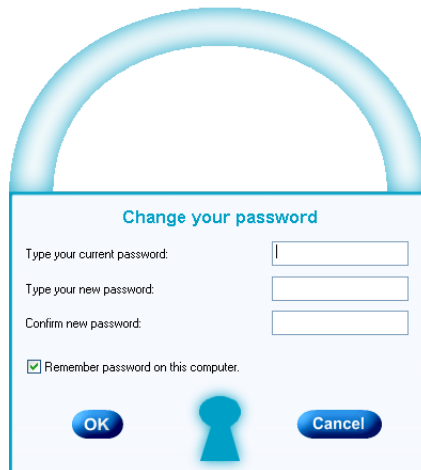
ATTENTION: All files in the folder are irrevocably deleted!

Before the deletion, a security request is carried out whether you really want to delete the folder:



5.3.6 Changing the password

1. Open the Freecom Personal Media Suite and select the tab "Secure&Compress".
2. Click on "Change password". The following window opens:



3. Please enter your current password in the top input field. Enter your new password in the middle input field and confirm it in the bottom input field.

Please note: Your changed password applies to all files and folders encrypted from the time of the change. For files and folders which were encrypted before, the password which was used for encryption remains.

Changes of the password do not apply to files and folders already encrypted!

5.4 Freecom SYNC

5.4.1 What is Freecom SYNC?

The Freecom SYNC integrated in the Freecom Personal Media Suite is a program for synchronizing files. The computer serves as origin of the data. This data can be processed on any number of other computers.

Example:

You create a document at work and want to work on it at home (Freecom Personal Media Suite is installed on your PC at work):

- Copy the document from the PC at work to your Freecom SYNC folder on your Freecom Hard Drive Pro.
- Open the document at home directly out of the Freecom SYNC folder. Work on it and save it in the Freecom SYNC folder.
- Connect the Freecom Hard Drive Pro to your PC at work and click "Sync now" in the Freecom Personal Suite. The document will now be synchronized between your PC at work and the Freecom Hard Drive Pro. While synchronizing, only modified files will be replaced by newer files.



5.4.2 Creating a new SYNC folder

1. Open the Freecom Personal Media Suite and select the tab "Freecom SYNC". Click on "Select folder" and select a folder on your Freecom Hard Drive Pro.
2. Alternatively, you can create a new SYNC folder on your Freecom Hard Drive Pro using the "Select folder" function by clicking on "Create new folder", naming the folder (e.g. "SYNC") and selecting it.
3. Click on "Complete" so that the new folder is created. Then opens the Freecom SYNC folder.

Important: The selected folder may not contain any files or folders!

5.4.3 Opening the SYNC folder

1. Open the Freecom Personal Media Suite and select the tab "Freecom SYNC".
2. Click on "Open folder" in order to open the SYNC folder.
3. If the Freecom Personal Media Suite is already open and has been started minimised in the taskbar, you can also open the SYNC folder through a right-click on the taskbar symbol of the Freecom Personal Media Suite.

5.4.4 Adding files into the SYNC folder

1. Open the SYNC folder.
2. Pull the respective files or folders in the SYNC folder using the drag&drop function.
3. Alternatively, you can also right-click on the file(s) or folder(s) and select the SYNC folder in the context menu under "Send to ...". Your files/folders are now copied into the SYNC folder.

5.4.5 Changing the SYNC folder

1. Open the Freecom Personal Media Suite and click on the tab "Freecom SYNC".
2. Click on "Change folder" to select a new folder for data synchronization.

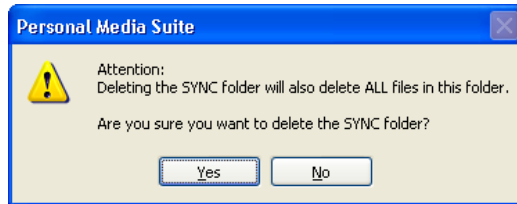
Important: The selected folder may not contain any files or folders!

5.4.6 Deleting the SYNC folder

1. Open the Freecom Personal Media Suite and click on the tab "Freecom SYNC".
2. Click on "Delete folder" in order to delete the active SYNC folder.

ATTENTION: All files in the folder are irrevocably deleted!

Before the deletion, a security request is carried out whether you really want to delete the folder:



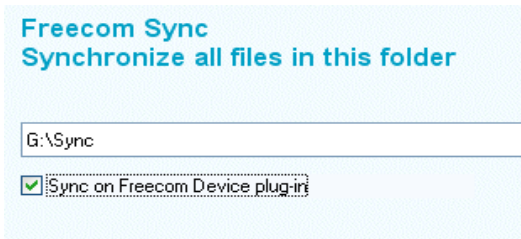
5.4.7 Synchronisation of files and folders

There are three possibilities for the synchronization of your files:

1. Press the SYNC button of your Freecom Hard Drive Pro. Your data is now synchronised.
2. Synchronisation of the data when your Freecom Hard Drive Pro is connected to your computer.

For this, please proceed as follows:

- a) Open the Freecom Personal Media Suite and click on the tab "Freecom SYNC".
- b) Select a SYNC folder if you have not yet done so.
- c) Activate the function "Sync on Freecom device plug-in" in the tab "Freecom SYNC":



Your files are now synchronized each time when you connect your Freecom Hard Drive Pro to your computer (Freecom Personal Media Suite has to be started).

This function is activated by default when a SYNC folder is created!

3. Starting the synchronization manually
 - a) Open the Freecom Personal Media Suite and click on the tab "Freecom SYNC".
 - b) Select a SYNC folder if you have not yet done so.
 - c) Click on "Sync now!" to start the data synchronization.
 - d) Alternatively, right-click on the system tray icon of the Freecom Personal Media Suite and select "Start synchronization" there.

5.4.8 Usage of the SYNC folder with other computers

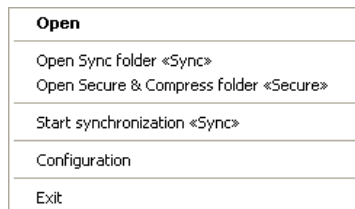
Please follow these instructions if you want to use the SYNC folder with another (second) computer.

All files you want to work with on another computer have to be opened directly out of the Freecom SYNC folder! You should not copy them to another hard disk, as this might cause a later synchronization to perform incorrectly.

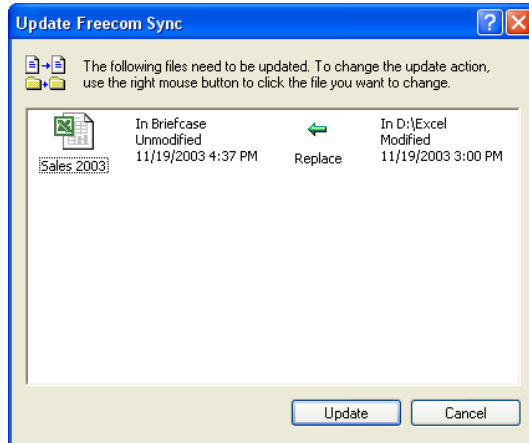
5.4.9 Synchronization of new or changed files

This example shows how you can synchronize files which were changed or created on the Freecom Hard Drive Pro, with the original files on the primary computer.

1. Connect the Freecom Hard Drive Pro with the primary computer.
2. Open the context menu on the SYNC icon in the taskbar and click on "Start synchronization".

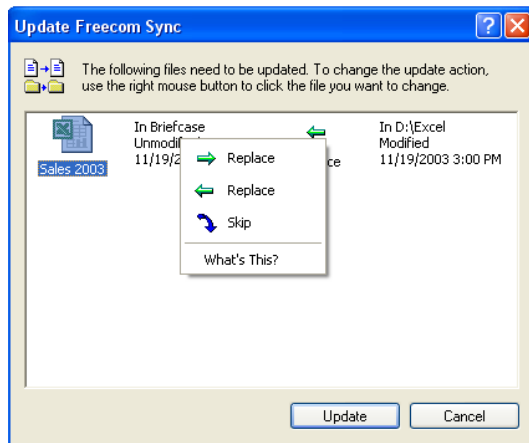


3. A status window appears. Please select "Update" if you wish to synchronize the file or otherwise select "Cancel". If you choose not to synchronize the file (Cancel) you will be able to synchronize this file during the next synchronization.



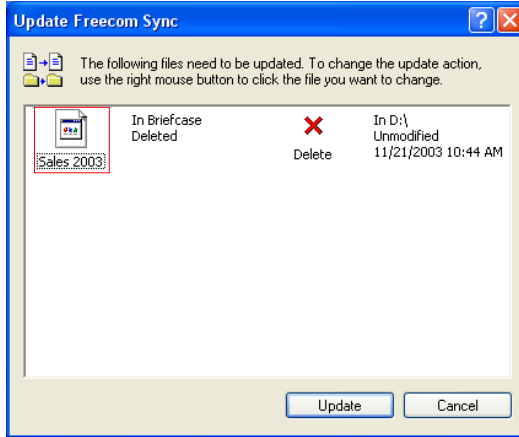
5.4.10 Skip files during synchronization

If you want to skip just one file out of many, please click on this file with the right mouse button and select "Skip". The green arrow next to the selected file changes to a blue one, indicating that this file will not be synchronized. You will be able to synchronize this file during the next synchronization.



5.4.11 Handling deleted files

Deleting files on either the primary computer or the SYNC folder on the Freecom Hard Drive Pro results in a red X next to the file during the next synchronization.

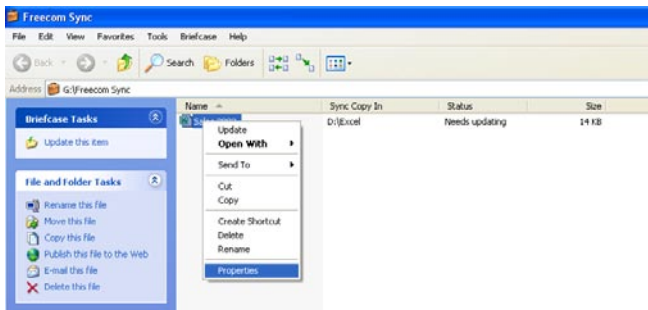


This indicates that the file has been deleted and that its counterpart will be deleted, too. Please select "Update" to proceed.

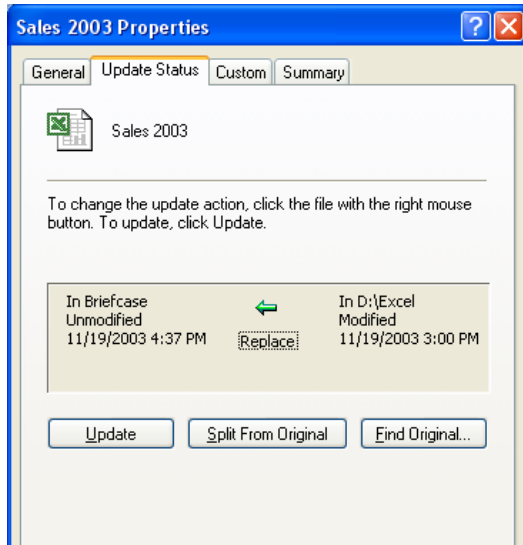
If you wish to keep the file, please click with the right mouse button on the file and select "Don't Delete". The file will not be deleted and will be disregarded during the next synchronization.

If you want to delete a file on either the primary computer or in the SYNC folder and do not want to affect its counterpart, it is necessary to "Split From Original" the files. Please follow the instructions:

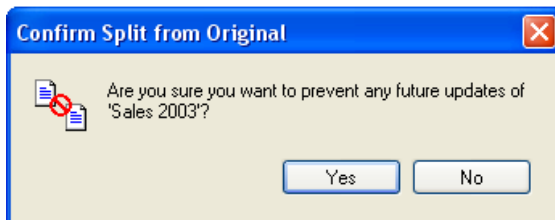
1. Select the file or folder you want to delete.
2. Choose "Properties" in the context menu.



3. Select "Update" and "Split From Original".



4. Select "Yes".



5.4.12 Office use

The Freecom Hard Drive Pro is ideal for making a local backup, which stores your data independently from your network or local computer. Simply 'send to' your important files and directories to the SYNC folder on the Freecom Hard Drive Pro and update your backup from time to time click "Sync now". This is extremely easy and very fast, because the SYNC tool only backups changed files via the fast USB 2.0/eSATA connections.

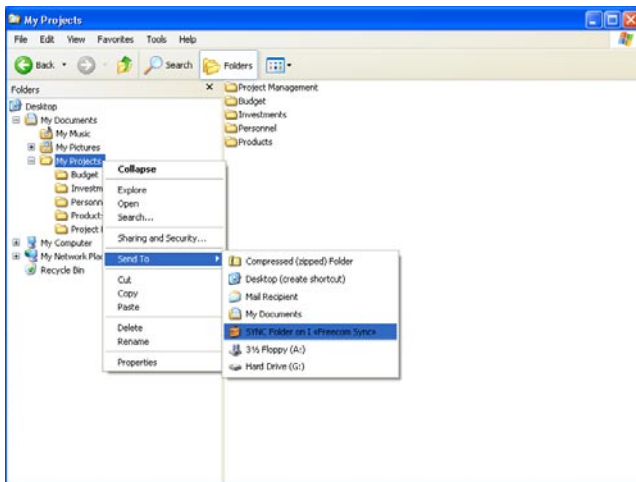
The best thing is, even when your network or local computer is not working, you can take your Freecom Hard Drive Pro to any other computer (equipped with an USB port) and continue. Even at your home-office, where you can be close to the people you love and still having all your business data available. Simply click "Sync now" before you leave the office and you are always up to date and can work with the data on the Freecom Hard Drive Pro.

The Freecom Hard Drive Pro vides a vast amount of memory – more than most computers are equipped with. It is ideal for storing large graphics or videos are be edited directly from the Freecom Hard Drive Pro, as its USB 2.0 and eSATA connections are fast enough by far.

Copying files into the SYNC folder

Mark the files and folders you want to copy to the SYNC folder. Click with the right mouse button on the files and folders and select 'Send to SYNC folder..' Done.

Now all your valuable data has been copied to the Freecom Hard Drive Pro. Every time you click "Sync now", all changed or added / deleted files and folders from the selected folders will be synchronized with the data on the Freecom Hard Drive Pro.



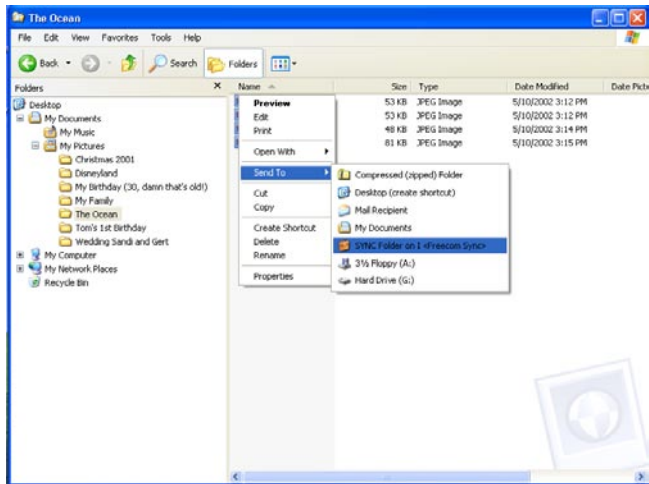
5.4.13 Home use

At the office, there is always a backup of your important business data. But how about your data at home? All the memories stored in digital photo's made during your last holiday? Or the first pictures and movies of your children! You do not want to loose those! The Freecom Hard Drive Pro is ideal for making a safety backup, which stores your data independently from your computer. Simply 'send to' your important files and directories to the SYNC folder on the Freecom Hard Drive Pro and update your backup from time to time click "Sync now". This is extremely easy and very fast, because the SYNC tool only backups changed files via the fast USB 2.0/eSATA connections. And all your memories are safe.

Copying files into the SYNC folder

Follow the instruction in the manual to install the Freecom Hard Drive Pro and the SYNC folder. Mark the files and folders you want to copy to the SYNC folder. Click with the right mouse button on the files and folders and select 'Send to SYNC folder..'!Done.

Now all your valuable data has been copied to the Freecom Hard Drive Pro. Every time click "Sync now", all changed or added / deleted files and folders from the selected folders will be synchronized with the data on the Freecom Hard Drive Pro.

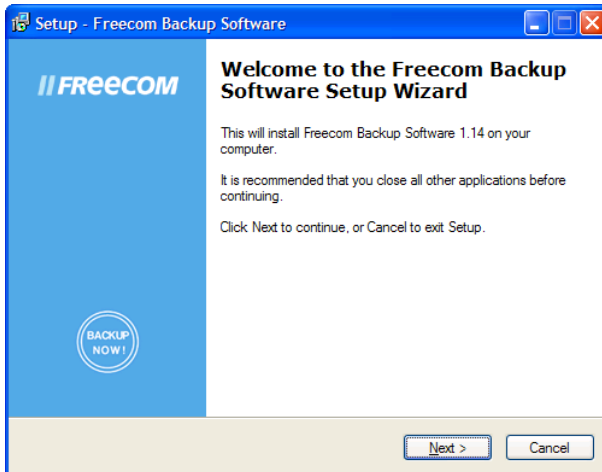


Chapter 6: Using the Freecom Backup Software (PC)

The "Freecom Backup Software" serves to backup personal and business data from internal file media (e.g. hard disk) onto external Freecom drives. It makes it possible to back up all data from individual hard disks, as well as data or data types individually specified by the user. This can be carried out as a full backup or in incremental backups (to save time). There are two user interfaces available:

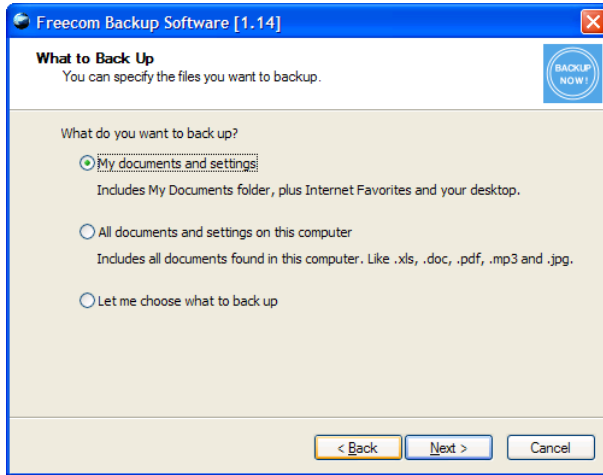
1. The **Wizard Mode** for quick and easy backup of the data.
2. The **Advanced Mode** with advanced configuration possibilities.

6.1 Wizard Mode



In this window you can specify whether the software should always start in **Wizard Mode** or in **Advanced Mode**.

6.1.1 Selection of the files to back up

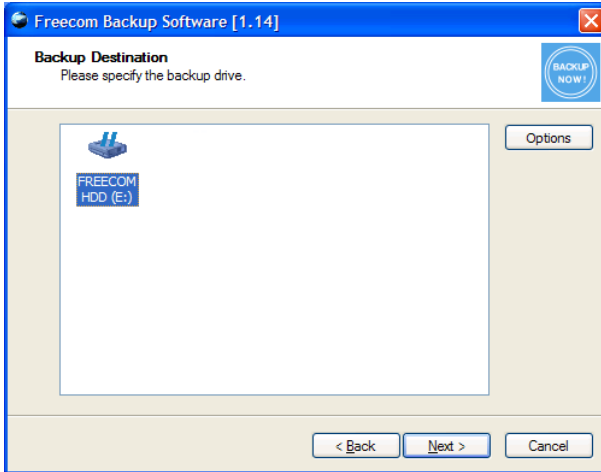


For selecting the files to be backed up, there are three different options available:

1. **My documents and settings** contains the "My Documents" folder, Internet Favourites, as well as the desktop of the logged-in user.
2. **All documents and settings on this computer** backs up the files of all users on your computer.
3. **Let me choose what to back up** gives you the possibility to carry out a user-specified backup. You can select specifically which types of files and directories you want to back up and which files should be excluded from the backup.

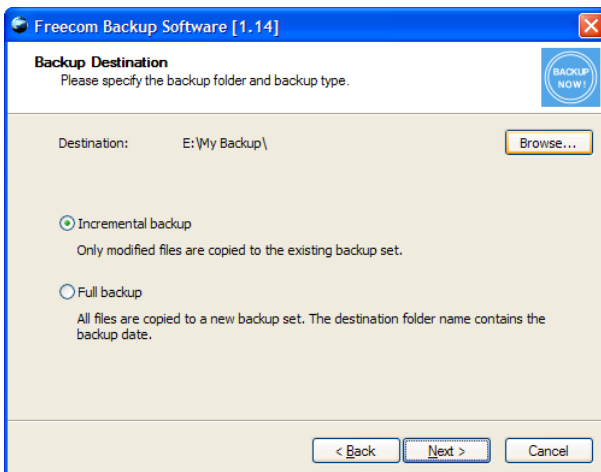
6.1.2 Predefined backup

Select either **My documents and Settings** or **All documents and settings on this computer** and then click on "Next". A list of available Freecom drives is displayed then:



Select the drive to which you want to back up your data. You can open the advanced backup options by clicking on the Options button.

6.1.3 Backup options



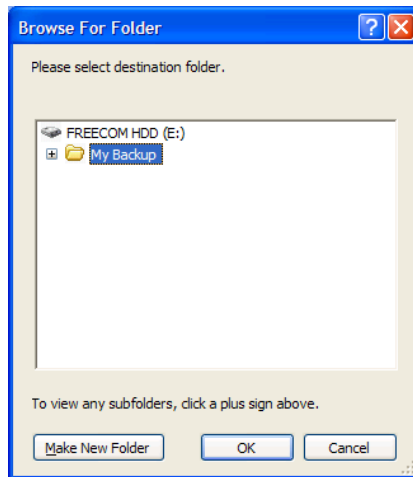
The modes **Full backup** (complete data backup) and **Incremental backup** (appending data backup) are available.

1. **Full backup** means that at every backup a new directory is created with all data to be backed up.
2. **Incremental backup** means that an already existing backup set is opened and only that data is backed up that has been created or modified since the last backup. An incremental backup is significantly faster than a full backup, because not all data needs to be backed up.

Click on "Next" to continue.

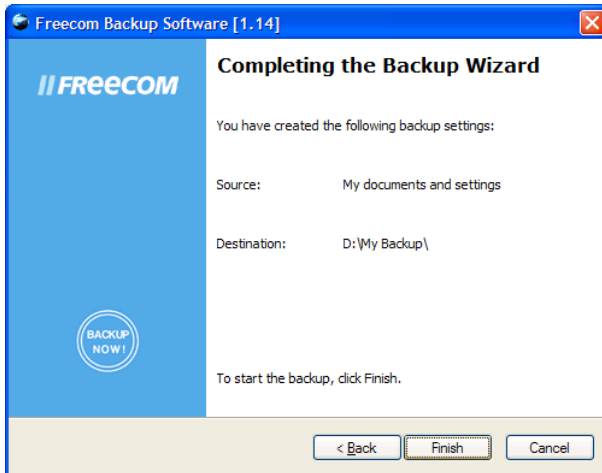
6.1.4 Select a directory

The target folder for your backup can be either the suggested folder name (e.g. "My Backup") or you can select your own target folder. Click on "Browse" for this and select a backup folder. Then click on "Next".



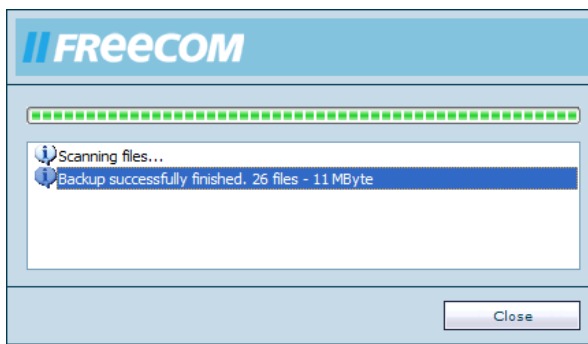
6.1.5 Summary of the settings made

A summary of the settings you made is displayed then. Click on "Back" to make changes or click on "Complete" to accept the settings and to start the backup.



6.1.6 Backup

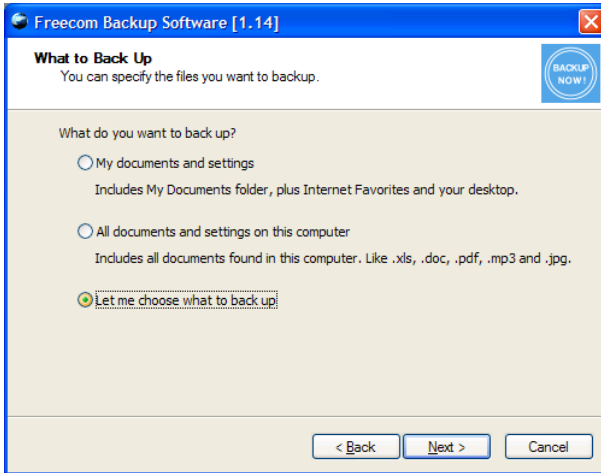
While the backup is in progress a window is displayed showing the status of the backup. A bar indicates the progress of the backup. Furthermore the number of backed up files and the total size of the backup is listed after the completion of the backup.



After the end of the backup click on "Close" and you are returned to the main window.

6.1.7 User-defined backup

Select "Let me choose what to backup" if you would rather determine yourself which files should be backed up.

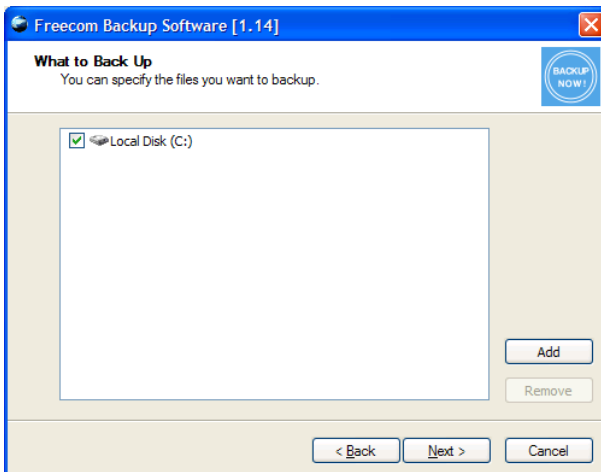


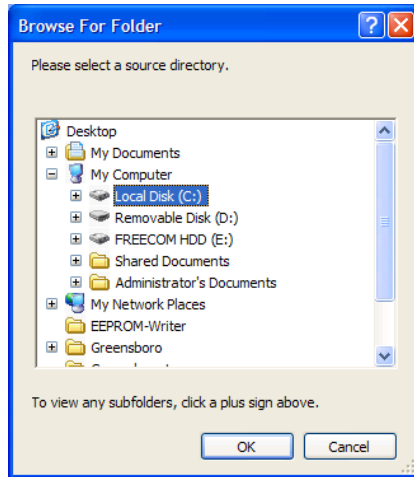
6.1.8 Select drives

This window lists the drives from which a backup can be made. By clicking on "Add" you can select further folders. With "Remove" you can take folders/drives from the list.

All the drives or folders that have a check mark are included in the backup. Remove the check mark from drives or folders that you do not want to back up.

Then click on "Next".

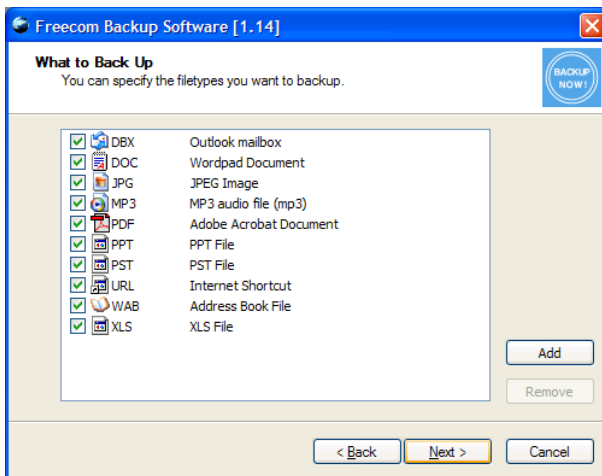




6.1.9 File types to back up

In the following window you can select which types of files should be backed up. This prevents unwanted files (such as temporary files) from being backed up.

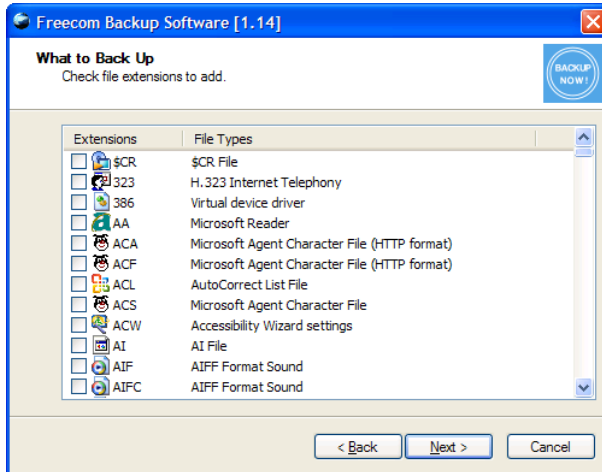
A list of the most common file types is presented. Click the "Add" button to add a further file types.



Click on "Next" to continue.

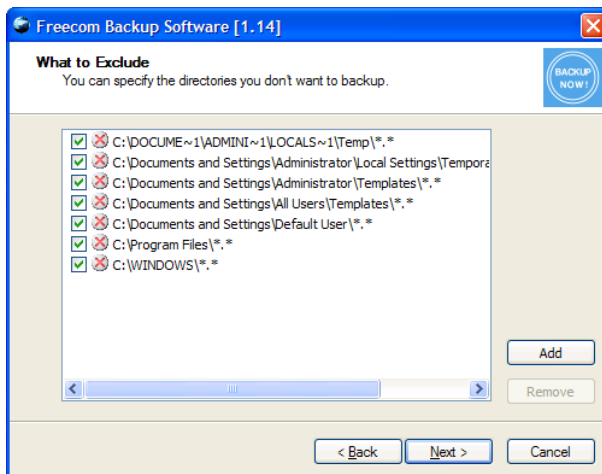
6.1.10 Add extensions

When you click on "Add" a list of all known file types is displayed. Select the file types you need. In case the file name extension you are looking for is not on the list, then you can define it yourself. For this go to the end of the list and select "Click here to add your own extension".



6.1.11 Folders that should not be backed up

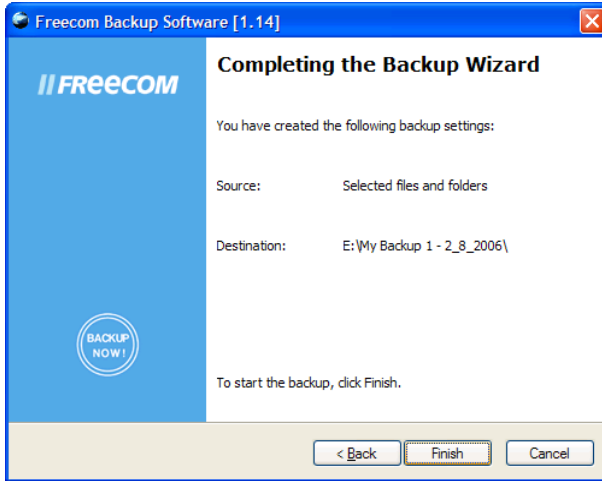
In the following window you can exclude folders from being backed up. By default various folders of the system drive are selected. Click the "Add" button to add a further directories. To remove directories from the list, select the directory to be omitted and then click on "Remove".



Then click on "Next".

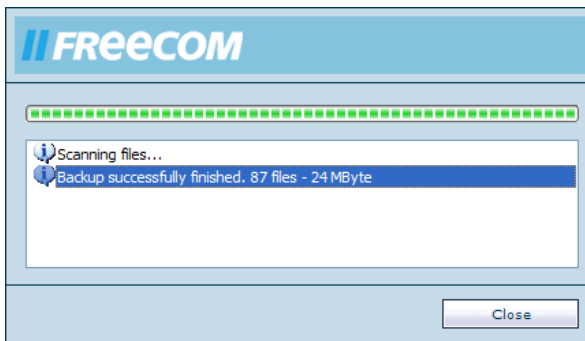
6.1.12 Summary of the settings made

The settings you have made are now listed for review. Click on "Back" if you want to make changes or click on "Complete" to start the backup.



6.1.13 Backup

While the backup is in progress a window is displayed showing the status of the backup. A bar indicates the progress of the backup. Furthermore the number of backed up files and the total size of the backup is listed after the completion of the backup.

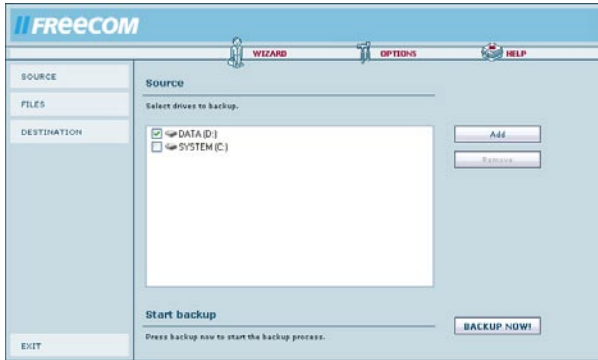


After the end of the backup click on "Close" and you are returned to the "Advanced Mode" window.

6.2 Advanced Mode

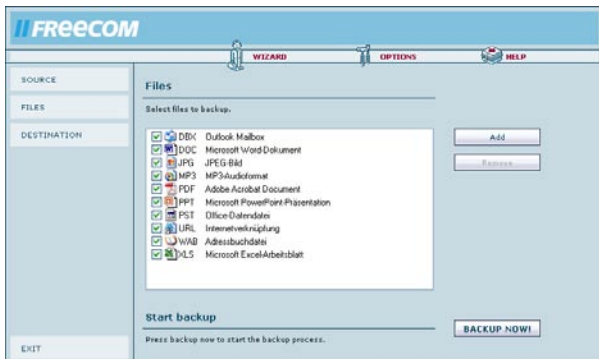
6.2.1 Select source

In Source the source drives or folders can be specified from which a backup should be made.



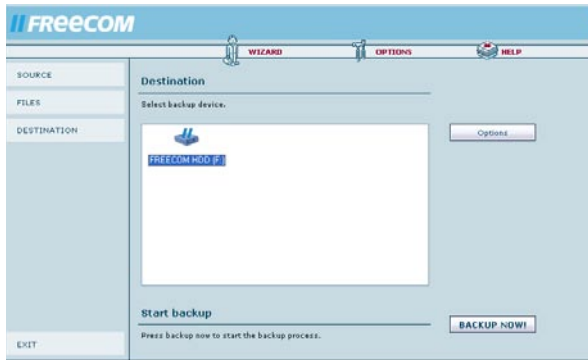
6.2.2 File types to back up (extensions)

File types can be selected in the Files window that should be included in the backup.



6.2.3 Selecting the target drive

In this window you can select the target drive for the backup.



6.2.4 Select backup mode

In the Destination window under **Options** the modes **Full backup** (complete data backup) and **Incremental backup** (appending data backup) are available.

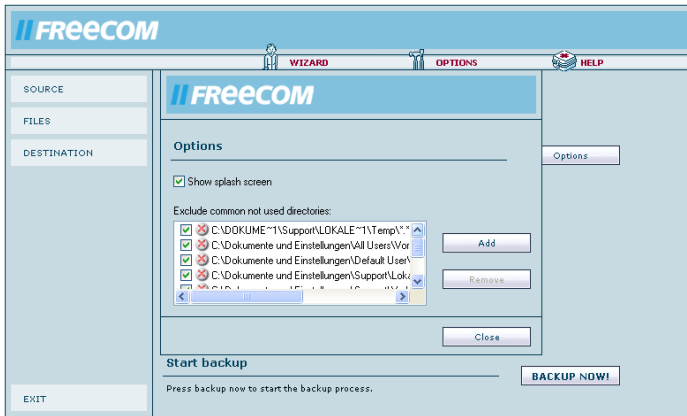
1. **Full backup** means that at every backup a new directory is created with all data to be backed up.
2. **Incremental backup** means that an already existing backup set is opened and only that data is backed up that has been created or modified since the last backup. An incremental backup is significantly faster than a full backup, because not all data needs to be backed up.



6.2.5 Options

Under **Options** in the main window the splash screen can be activated or deactivated that appears when the software is started.

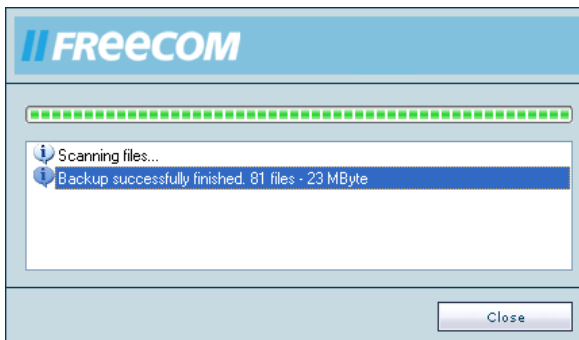
Furthermore folders can be selected that should not be included in the backup.



Click on "Backup Now" to start the backup.

6.2.6 Backup

While the backup is in progress a window is displayed showing the status of the backup. A bar indicates the progress of the backup. Furthermore the number of backed up files and the total size of the backup is listed after the completion of the backup.



Once the backup is completed press the "Close" button and you are returned to the main menu.

Chapter 7: Partitioning your Freecom Hard Drive Pro

7.1 General information

Your Freecom Hard Drive Pro was partitioned and formatted to provide you with the maximum available capacity and compatibility. FAT32 was chosen as file system to assure that you will be able to read your files on any PC. It is recommended not to change the current configuration of your Freecom Hard Drive Pro.

For some users another file system might fit better for their needs. This manual describes current limitations of most common file systems and Instructions to enable you to adapt the Freecom Hard Drive Pro to your needs.

7.2 File System features

Please refer to the tables below for an overview:

File systems supported by different operating systems

File system / Operating system	FAT	FAT32	NTFS	HFS+
Windows 2000	yes	yes	yes	no
Windows XP	yes	yes	yes	no
MacOS X	yes	yes	yes (only read)	yes

Maximum size of a partition

File system / Operating system	FAT	FAT32	NTFS	HFS+
Windows 2000	4 GB*	32 GB	16 TB	-
Windows XP	4 GB*	32 GB	16 TB	-
Mac OS X 10.1.x	-	128 GB	-	2 TB
Mac OS X 10.2.x	-	128 GB	-	8 TB
Mac OS X 10.3.x	-	(-> 128 GB)	-	16 TB
Mac OS X 10.4.x	-	(-> 128 GB)	-	16 TB

* FAT partitions larger than 2 GB can only be administrated by Windows 2000/XP.

Example for different partitions with different file systems on one Freecom Hard Drive Pro

File system	NTFS	FAT32
Total size of Freecom Hard Drive Pro	200 GB	300 GB

Note: Writing to hard disks with NTFS formatting is only possible under Windows 2000/XP.

The example above is a good solution for Windows 2000/XP users who sometimes exchange data with Windows 98SE/ME PCs.

For storing data under Windows 2000/XP both partitions can be used. As the NTFS file system is not recognized by Windows 98SE/ME data to be used on these operating systems must be stored on the FAT32 partition.

Please follow the steps below to adapt the Freecom Hard Drive Pro for your needs.

7.3 Partitioning your Freecom Hard Drive Pro under Windows XP / 2000

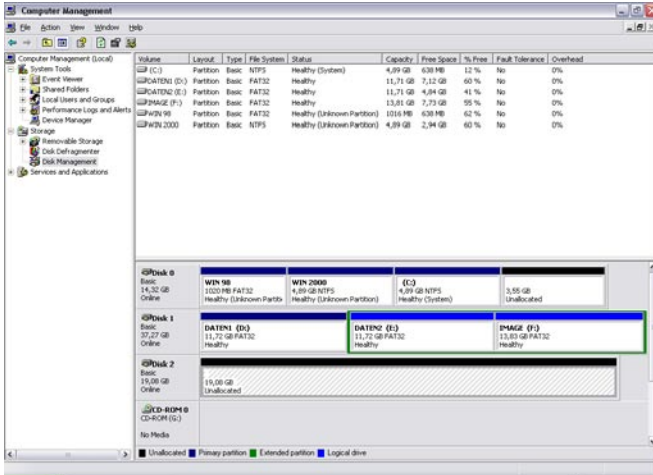
7.3.1 Deleting a partition on the Freecom Hard Drive Pro under Windows XP / 2000

1. Click with the right mouse button on the "My Computer" icon on your desktop.
2. Select the option "Manage".
3. Select the option "Storage" -> "Disk Management".
4. Choose your external hard drive and right-click on the partition.
5. Select "Delete Partition" and confirm by clicking on "Yes". The partition will be deleted now.

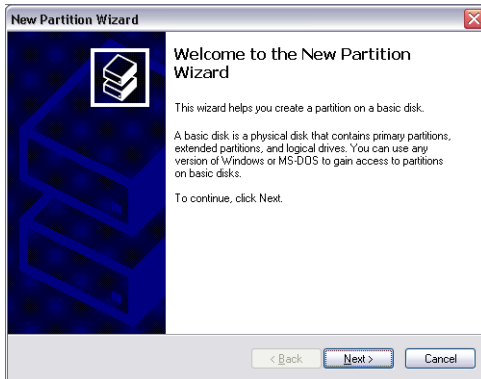
7.3.2 Creating a partition on the Freecom Hard Drive Pro under Windows XP / 2000

The following steps will guide you through the process of creating partitions on your Freecom Hard Drive Pro. After this procedure your Freecom Hard Drive Pro will be ready for use and it will be allocated a drive letter.

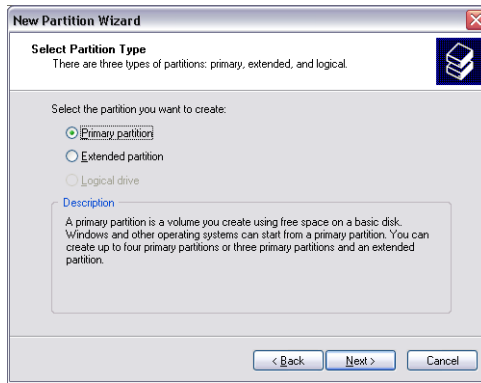
1. Click with the right mouse button on the "My Computer" icon on your desktop.
2. Select the option "Manage".
3. Select the option "Storage" -> "Disk Management".
4. Choose the hard disk, which is "unallocated". Ensure that the entire drive is "unallocated".



- Click with the right mouse button on the "unallocated" area and select the option "New Partition" (Windows 2000: "Create Partition Wizard"). The "New Partition Wizard" opens. Click on "Next".



6. Select "Primary partition" and click on "Next".

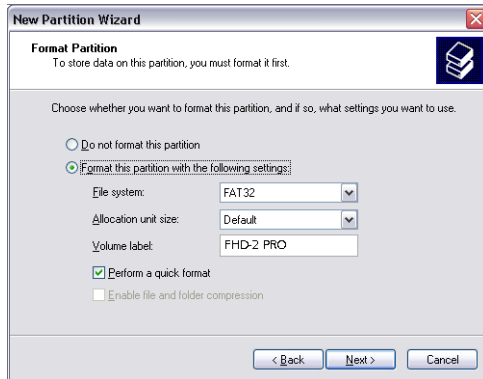


7. Now you can adjust the size of your partition. Click on "Next" if only one partition is to be created. See next chapter (Creating two or more partitions on the Freecom Hard Drive Pro under Windows XP/2000) how to create more than one partition.

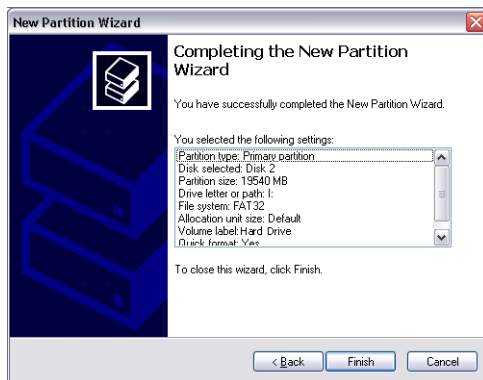


8. Assign a drive letter to your hard disk. Normally you can use the default options. Click on "Next".

9. Select the formatting option. Choose either "FAT32" or "NTFS"; the "Allocation Unit Size" should remain on "Default". Finally select "Perform Quick Format" and click on "Next".

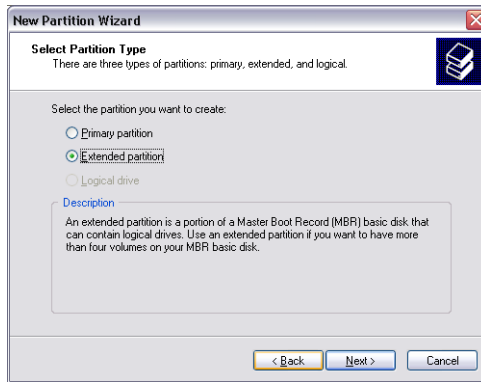


10. Click on "Finish" to complete the partitioning of your Freecom Hard Drive Pro. Your Freecom Hard Drive Pro will be formatted now and is ready-to-use afterwards.

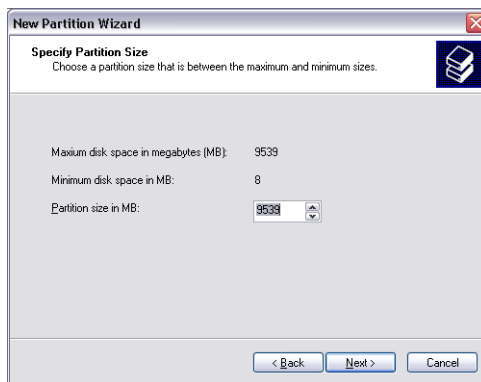


7.3.3 Creating two or more partitions on the Freecom Hard Drive Pro under Windows XP / 2000

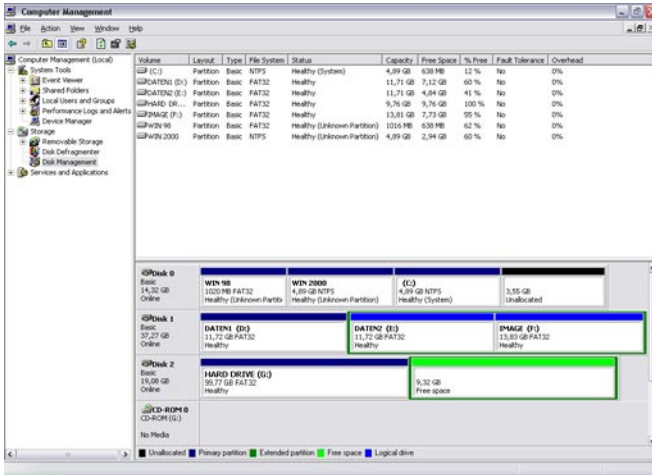
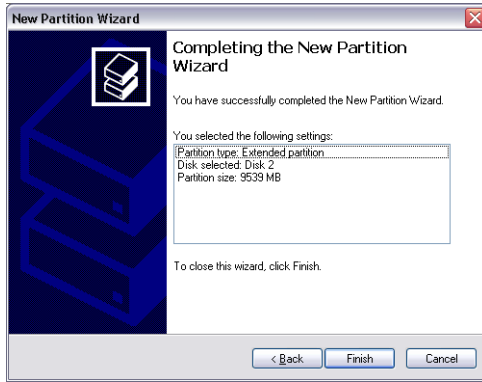
1. Repeat the steps from the previous chapter (Creating a partition on the Freecom Hard Drive Pro under Windows XP/2000) for creating the first partition.
2. Click with the right mouse button on the "My Computer" icon on your desktop.
3. Select the option "Manage".
4. Select the option "Storage" -> "Disk Management".
5. Right-click on the unallocated space of your Freecom Hard Drive Pro and select the option "New partition" (Windows 2000: "Create partition"). The "New Partition Wizard" (Windows 2000: "Create Partition Wizard") opens. Click on "Next".
6. Select "Extended partition" and click on "Next".



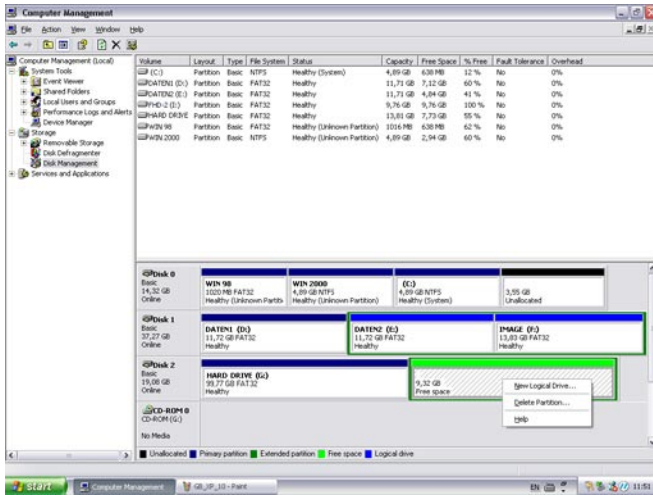
7. Now you can adjust the size of your partition. Enter the size and click on "Next".



- Click on "Finish" to create the "Extended partition". The unallocated space now changed to "Free space".



- Right-click on "Free Space" and select "New Logical Drive" (Windows 2000: "Create Logical Drive"). The "New Partition Wizard" (Windows 2000: "Create Partition Wizard") opens. Click on "Next".

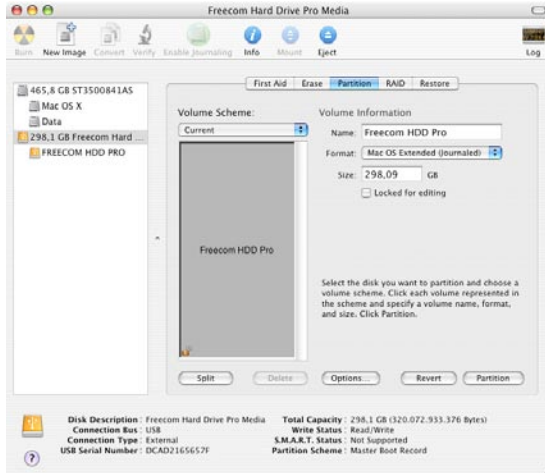


- "Logical drive" is already selected. Click on "Next".
- Specify the partition size and click on "Next".
- Assign a drive letter and click on "Next".
- Select the formatting option. Choose either "FAT32" or "NTFS", the "Allocation Unit Size" should remain on "Default". Finally select "Perform Quick Format" and click on "Next".
- Click on "Finish" to complete partitioning. Your partition will be formatted now and is ready-to-use.

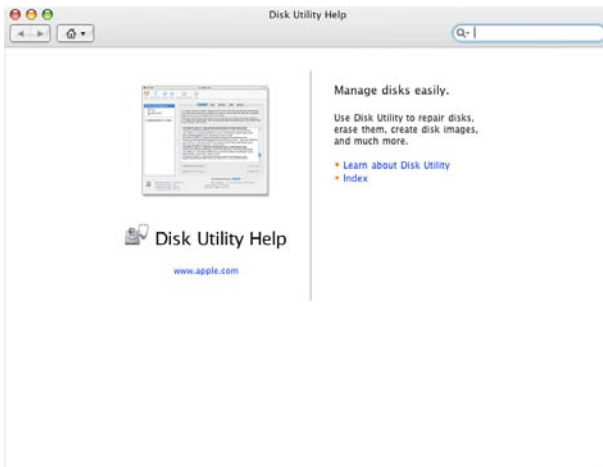
Attention: If you select NTFS as file system, the data on your Freecom Hard Drive Pro is read-only under Mac OS X. It is not possible to write data.

7.4 Partitioning your Freecom Hard Drive Pro under Mac OS X

1. Open the "Disk Utility". This can be found in "Applications" —> "Utilities".
2. Click on the tab "Partition".



Here you can setup the partition settings and partition the drive according to your settings. Detailed information how to use the Disk Utility can be found in the help:



Chapter 8: Troubleshooting

Issue	Solution
After I connected the Freecom Hard Drive Pro to my computer for the first time no Freecom SYNC folder has been created automatically.	<ul style="list-style-type: none"> • Install the Freecom Personal Media Suite software and safely remove and reconnect the Freecom Hard Drive Pro • Follow the instructions on chapter 5.4.2 Creating a new SYNC folder.
After installation of Freecom Personal Media Suite, the message "No Freecom Hard Drive Pro external hard drive found" appears.	<ul style="list-style-type: none"> • Connect the Freecom Hard Drive Pro to your computer. • Check all connections between the Freecom Hard Drive Pro, the power supply and the computer. • Safely remove and reconnect the Freecom Hard Drive Pro.
Files deleted in the SYNC folder are still appearing during the synchronization.	You have to "Split From Original" the files from their counterparts before you may delete them. Please refer to chapter 5.4.11. Handling deleted files.
An empty folder is not synchronized.	Empty folders are not taken into account during synchronization.
If you are working with the program "Total Commander" and are using the "send to" dialog to add items to the SYNC folder, the message "The briefcase is in use on another computer" could appear.	The SYNC folder is opened by another program. Please close all applications which are using the SYNC folder.
Not enough memory on the target drive (Freecom Hard Drive Pro) during creation of SYNC folder.	Delete files on the target drive (Freecom Hard Drive Pro) or select less files.
Not enough memory on the target drive (Freecom Hard Drive Pro) during synchronization.	Delete files on the target drive (Freecom Hard Drive Pro).
Data on the Freecom Hard Drive Pro can be read, but not written.	Check with which file system the Freecom Hard Drive Pro was formatted. Only with FAT 32 data on the drive under different operating systems can be read and written.
There is no response when I press the sync button.	Make sure PMS is installed, make sure the device and computer are on. When connected over eSATA in some cases the sync button may not function due to a known compatibility issue of the eSATA host. In this case the sync process can also be initiated from the PMS by clicking "sync now" or you can use the USB 2.0 connection.

WARRANTY

(valid in Europe/Turkey only)

We thank you for purchasing this Freecom product and hope you will enjoy using it. In order to avoid unnecessary inconvenience on your part, we suggest reading the quick install guide, instruction manual and any additional electronic and or printed manuals. When problems occur we have a database with Frequently Asked Questions (FAQ) on our Freecom website (www.freecom.com), please check this site before you contact the helpdesk.

Your Guarantee

All Freecom products come with unlimited technical phone and web support. By this Guarantee, Freecom warrants their products to be free from defects in material and workmanship for a period listed below from the date of its original purchase. If during this period of guarantee the product proves defective due to improper materials or workmanship, Freecom will, without charge for labour or parts, at its sole discretion, repair or replace the product or its defective parts upon the terms and conditions set out below.

Conditions

This guarantee will be granted only when the original invoice or sales receipt (indicating the date of purchase, product and serial number) is presented together with the defective product and a Freecom RMA number received from the Freecom Website or given by a Freecom Service Center. Freecom reserves the right to refuse the free-of-charge guarantee services when the date of purchase of the product cannot be proven. This guarantee will not apply if the RMA number is missing, the serial number on the product has been altered, removed or made illegible.

This guarantee covers only the hardware components packaged with the product. This guarantee covers none of the following: (a) any consumable supplied with the product, such as media or batteries; (b) damage to or loss of any software programs, data or removable storage media; (c) any damage resulting from adaptations, changes or adjustments, which may have been made to the product, without the prior written consent of Freecom; (d) attempted repair by any party other than authorized by Freecom and (e) accidents, lightning, water, fire or any other such cause beyond the reasonable control of Freecom.

With respect to all services provided, Freecom is not responsible for any damage to or loss of any programs, data or other information stored on any media or any part of any product serviced. Freecom is not liable for the consequence of business loss in case of system failure. Be sure to exclude all parts not covered by this guarantee prior to returning the product to Freecom. Freecom is not liable for any loss or damage to these items. If during the repair of the product the contents of the hard drive are altered, deleted or in any way modified, Freecom is not liable whatsoever.

Repair parts and replacement products will be provided on an exchange basis and will be either new, equivalent to new or reconditioned. All replaced parts and products become the property of Freecom. The period of guarantee for any product or part repaired or replaced in warranty shall be the balance of the original guarantee. Repairs or replacements on product or parts out of warranty carry **6 (six)** months guarantee.



Free Manuals Download Website

<http://myh66.com>

<http://usermanuals.us>

<http://www.somanuals.com>

<http://www.4manuals.cc>

<http://www.manual-lib.com>

<http://www.404manual.com>

<http://www.luxmanual.com>

<http://aubethermostatmanual.com>

Golf course search by state

<http://golfingnear.com>

Email search by domain

<http://emailbydomain.com>

Auto manuals search

<http://auto.somanuals.com>

TV manuals search

<http://tv.somanuals.com>