



HWU54DM

Hi-Gain™ Mini USB Wireless-G Adapter



User's Manual



Website: www.hawkingtech.com
Email: techsupport@hawkingtech.com

© Copyright 2005 Hawking Technologies, Inc. All Rights Reserved.

Trademarks & Copyright

Windows 95/98/ME and Windows NT/2000/XP are registered trademarks of Microsoft Corp. All other brands and product names are trademarks of their respective companies.

No part of this publication may be reproduced in any form or by any means or used to make any derivative (such as translation, transformation or adaptation) without the express written consent of the manufacturer as stipulated by the United States Copyright Act of 1976.

FCC Warning

This equipment has been tested and found to comply with the regulations for a Class B digital device, pursuant to Part 15 of the FCC Rules. These limits are designed to provide reasonable protection against harmful interference when the equipment is operated in a commercial environment. This equipment generates, uses, and can radiate radio frequency energy and, if not installed and used in accordance with this user's guide, may cause harmful interference to radio communications. Operation of this equipment in a residential area is likely to cause harmful interference, in which case the user will be required to correct the interference at his/her own expense.

CE Mark Warning

This is a Class B product. In a domestic environment, this product may cause radio interference, in which case the user may be required to take adequate measures.

HAWKING LIMITED WARRANTY

Hawking Technology guarantees that every HWU54DM Hi-Gain Mini USB Wireless-G Adapter is free from physical defects in material and workmanship under normal use for two (2) years from the date of purchase. If the product proves defective during this two-year warranty period, call Hawking Customer Service in order to obtain a Return Authorization number. Warranty is for repair or replacement only. Hawking Technology does not issue any refunds. **BE SURE TO HAVE YOUR PROOF OF PURCHASE. RETURN REQUESTS CAN NOT BE PROCESSED WITHOUT PROOF OF PURCHASE.** When returning a product, mark the Return Authorization number clearly on the outside of the package and include your original proof of purchase.

IN NO EVEN SHALL HAWKING TECHNOLOGY'S LIABILITY EXCEED THE PRICE PAID FOR THE PRODUCT FROM DIRECT, INDIRECT, SPECIAL, INCIDENTAL OR CONSEQUENTIAL DAMAGES RESULTING FROM THE USE OF THE PRODUCT, ITS ACCOMPANYING SOFTWARE OR ITS DOCUMENTATION. Hawking Technology makes no warranty or representation, expressed, implied or statutory, with respect to its products or the contents or use of this documentation and all accompanying software, and specifically disclaims its quality, performance, merchantability, or fitness for any particular purpose. Hawking Technology reserves the right to revise or updates its products, software, or documentation without obligation to notify any individual or entity. Please direct all inquiries to: techsupport@hawkingtech.com

CONTENTS

1 INTRODUCTION	1
1.1 Features.....	1
1.2 Specifications.....	1
1.3 Package Contents.....	2
1.4 Wireless Network Options / Quick Tutorial	2
The Peer-to-Peer Network (also known as Ad-Hoc Mode)	2
The Access Point Network	3
2 INSTALLATION PROCEDURE	4
2.1 Verify Device Installation.....	3
3 NETWORK CONNECTION	4
In Windows 98SE/ME	4
In Windows 2000/XP	6
4 CONFIGURATION UTILITY	9
4.1 Accessing the Configuration Utility.....	9
4.2 Site Survey.....	10
4.3 Profile	11
4.3.1 Configure the Profile (Add/Edit a Profile).....	11
4.3.2 Authentication vs. Security.....	13
4.3.3 Enable WPA in Windows XP	15
4.4 Link Status	20
4.5 Reading the Link Status Page and Obtaining the Strongest Connection.....	21
4.6 Statistics.....	22
4.7 Advanced.....	22
4.8 About	24
5 UNINSTALLATION	25
6 TROUBLESHOOTING	26

1 Introduction

Thank you for purchasing the Hawking Technologies Hi-Gain Mini USB Wireless-G Adapter . The HWU54DM complies with the IEEE 802.11g standard, which supports up to 54Mbps high-speed wireless networking. It is also backwards compatible with IEEE 802.11b devices. The HWU54DM is a high quality, high performance wireless product that has been designed with Hawking's Hi-Gain Technology for improved distance and throughput. Using a unique swivel-and-rotate design paired with a 5dB/5dB Patch antenna, the adapter ensures you'll get the greatest signal coverage wherever you are. The antenna itself is uniquely designed to get up to 300% increase in signal reception compared to standard wireless adapters. Just point the unit in the direction of the wireless signal source and you're sure to get the highest signal strength. The LED Signal Strength Indicator provides you the information you need to make sure you're getting the most from your wireless connection.

For piece-of-mind wireless security, the HWU54DM supports 64/128-bit WEP data encryption that protects your wireless network from eavesdropping. It also supports the WPA and WPA2 (Wi-Fi Protected Access) security standards that combines IEEE 802.1x and TKIP (Temporal Key Integrity Protocol) technologies. Client users are required to authorize before accessing to APs or AP Routers, and the data transmitted in the network is encrypted/decrypted by a dynamically changed secret key.

1.1 Features

- Works with both IEEE 802.11b and IEEE 802.11g products.
- Rotate and Swivel design for maximum reception adjustability
- Designed with Hawking Hi-Gain Technology
- Signal Strength Indicator shows current wireless signal reception information
- Directional 5dBi/5dBi Dual Hi-Gain Antenna design for increased Wireless Distance and elimination of wireless interference from laptop components
- High-speed transfer data rate - up to 54Mbps.
- High throughput allows for the transfer of data heavy multi-media files.
- Supports 64/128-bit WEP, WPA (TKIP with IEEE 802.1x) and AES functions for the highest level of security.
- Automatic fallback increases data security and reliability.
- Supports the most popular operating systems: Windows 98SE/Me/2000/XP.
- USB2.0 Compliant & Bus powered

1.2 Specifications

- Standard: IEEE 802.11b/g
- Interface: USB 2.0
- Frequency Band: 2.4000 ~ 2.4835GHz (Industrial Scientific Medical Band)
- Modulation: OFDM with BPSK, QPSK, 16QAM, 64QAM (11g)
BPSK, QPSK, CCK (11b)
- Data Rate: 54/48/36/24/18/12/11/9/6/5.5/2/1Mbps auto fallback

- Security: 64/128-bit WEP Data Encryption, WPA, WPA2, AES and IEEE 802.1x
- Antenna: Hi-Gain 5dBi/5dBi Antenna (Rotate and Swivel)
- Drivers: Windows 98SE/Me/2000/XP
- LEDs: Power, Link, Signal Strength indicators (5) :

Red	Bad
Orange	Poor
Yellow	Good
Blue	Very good
Blue	Excellent
Orange	Link / Activity
Blue	Power

- Transmit Power: 16dB m~18dBm (Before Antenna)
- Gain: Dual 5dBi
- Dimension: 4.36(H) x 1.36(W) x 0.5(D) inches
- Temperature: 32~131° F (0 ~55°C)
- Humidity: Max. 95% (NonCondensing)
- Certification: FCC, CE

1.3 Package Contents

Before you begin the installation, please check the items of your package. The package should include the following items:

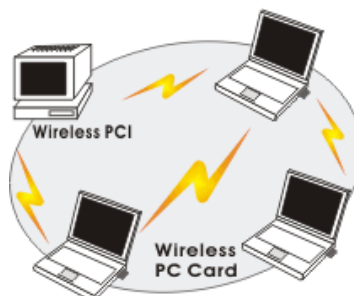
- One Hi-Gain Mini USB Wireless-G Network Adapter
- One USB Base Stand for desktop PCs
- One CD (Driver/Utility/User's Manual.)
- One Quick Installation Guide

If any of the above items is missing, contact your supplier as soon as possible.

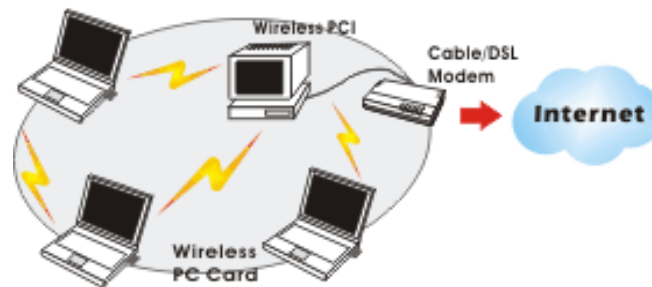
1.4 Wireless Network Options / Quick Tutorial

The Peer-to-Peer Network (also known as Ad-Hoc Mode)

This network installation lets you set a small wireless workgroup easily and quickly. Equipped with wireless PC Cards, wireless PCI, or Wireless USB adapters, you can share files and printers directly between each PC and laptop.

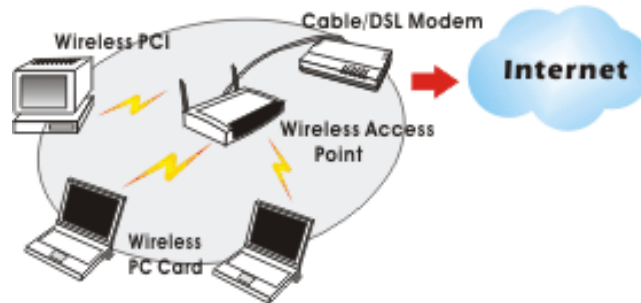


You can also use one computer as an Internet Server to connect to a wired global network and share files and information with other computers via a wireless LAN.



The Access Point Network

The network installation allows you to share files, printers, and Internet access much more conveniently. With Wireless LAN Cards, you can connect to the internet or with your network through a wireless access point.



2 Installation Procedure

Before you proceed with the installation, please notice following descriptions.

Note1: Please do not install the HWU54DM into your computer before installing the software program from the CD.

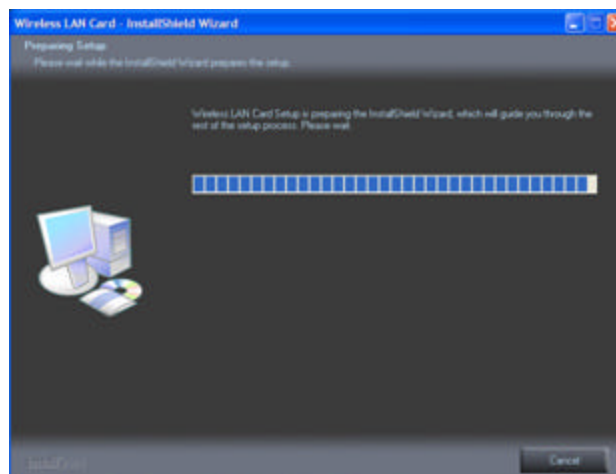
Note2: The following installation was operated under Windows XP. (Procedures are similar for Windows 98SE/Me/2000.)

Note3: If you have installed the Wireless adapter driver & utility before, please uninstall the old version first.

A. Insert the Installation CD into your CD-ROM Drive. The Utility splash screen will appear. Click **Driver & Utility Setup** to begin setup initialization.

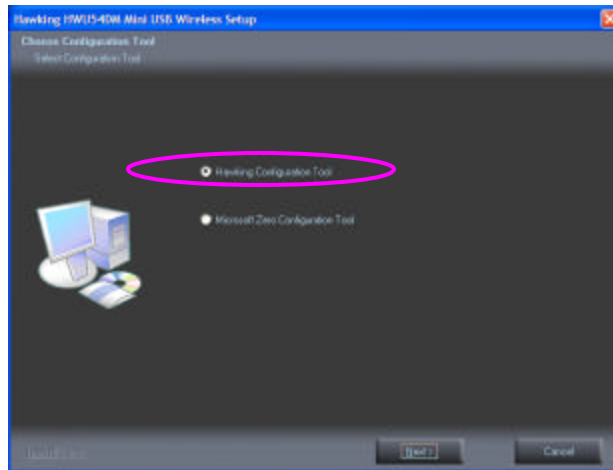


B. Setup will initialize automatically.

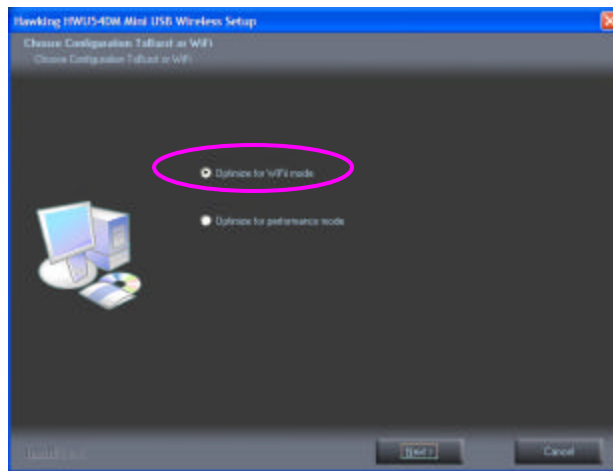


C. Setup will ask prompt you to accept the Licensing agreement. Select **Yes** to continue.

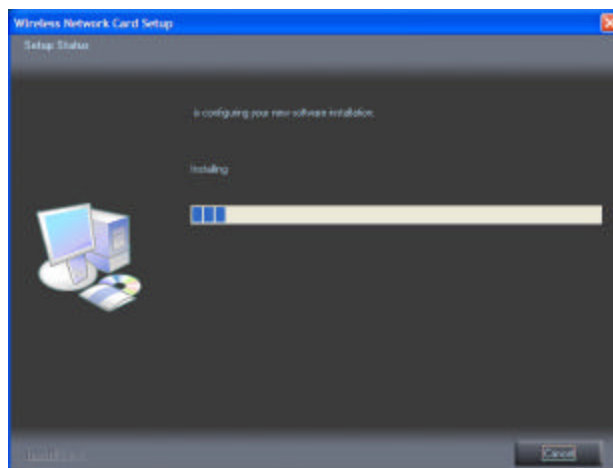
D. Choose “**Hawking Configuration Tool**” and click **Next**



E. Select “**Optimize for WiFi Mode**” and click **Next**.

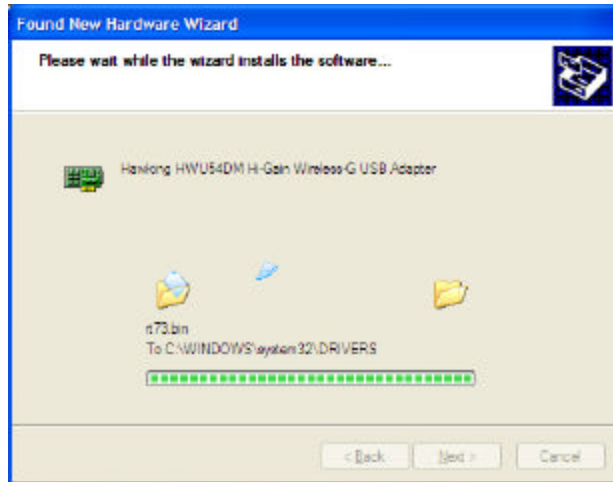


F. The system will begin to install the software utility for the HWU54DM. Follow the instruction of the program to plug in the Mini USB Adapter into the USB port of your desktop or laptop computer.

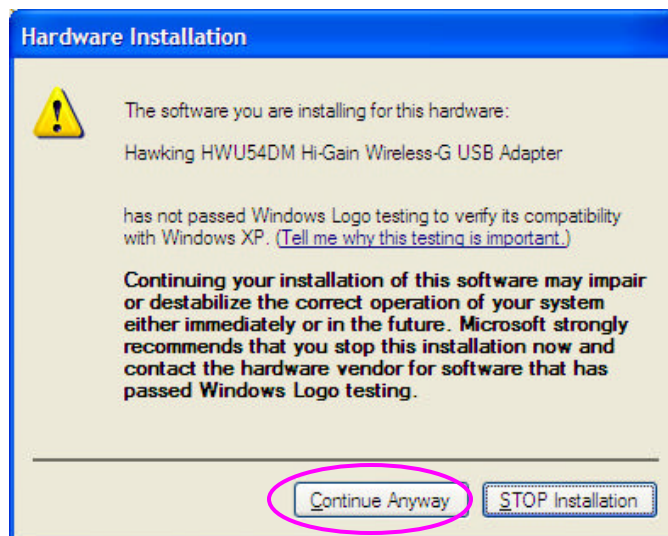




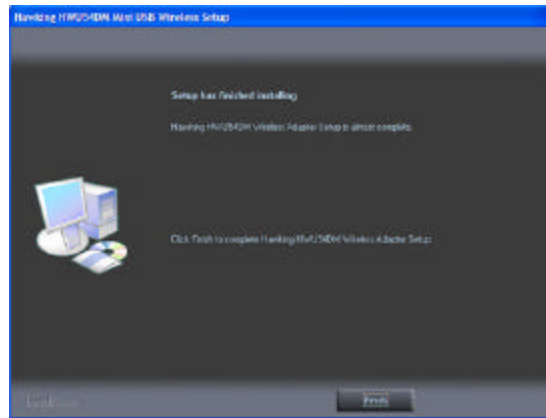
G. The system will automatically detect the Mini USB Adapter and copy the necessary driver files over.



H. Windows Hardware may prompt you with a hardware installation warning message. This message is standard issue. Please disregard the message by selecting “**Continue Anyway**” to continue the HWU54DM setup.



- I. When the following screen appears, click **Finish** to complete the software and driver installation.



2.1 Verify Device Installation

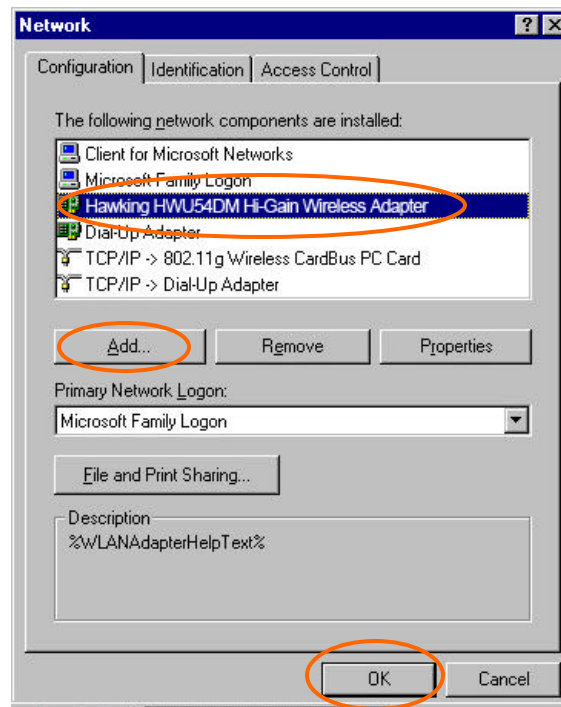
To verify that the device has been properly installed in your computer and is enabled, go to **Start → Settings → Control Panel → System (→ Hardware) → Device Manager**. Expand the **Network adapters** item. If the **Hawking HWU54DM Mini USB Adapter** is listed, it means that your device is properly installed and enabled.

3 NETWORK CONNECTION

Once the driver has been installed, you will need to make adjustments to your network settings.

In Windows 98SE/ME

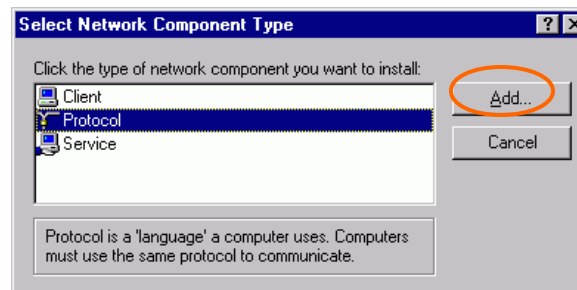
1. Go to **Start** → **Settings** → **Control Panel** → **Network**.
2. Make sure that you have all the following components installed.



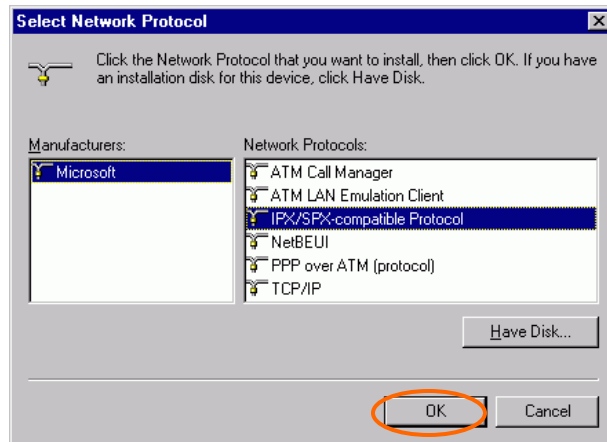
- Hawking HWU54DM Hi-Gain Wireless Adapter
- IPX/SPX-compatible Protocol
- NetBEUI
- TCP/IP

If any components are missing, click on the **Add** button to install them. All of the protocols and clients required (listed above) are provided by Microsoft.

3. Next, highlight the specific network component you need, click **Add**.

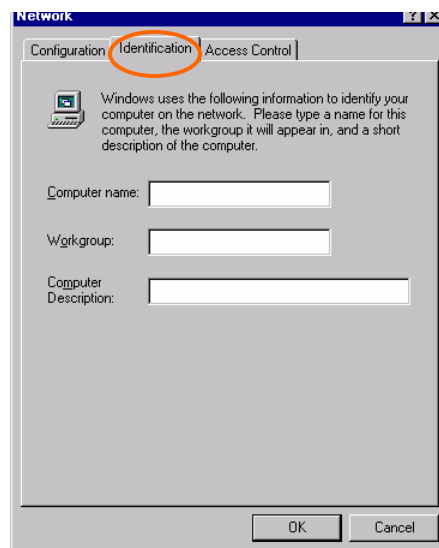


4. Highlight **Microsoft**, and then double click on the item you want to add. Click **OK**.

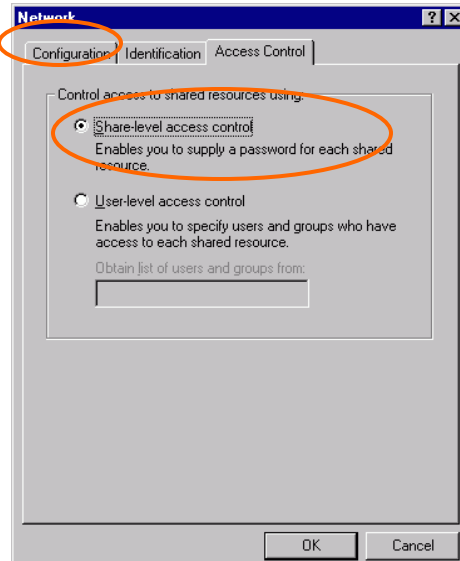


After returning to the Network screen, you can make your computer is visible on the network by enabling the **File and Print Sharing**.

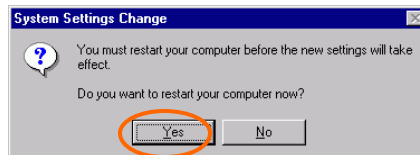
5. Click the **Identification** tab. Enter a name that is unique on the network. Type the name of your workgroup, which should be the same name used by all of the other PCs on the network.



6. Click the **Access Control** tab. Make sure that "**Share-level access control**" is selected. If connecting to a Netware server, share level can be set to "**User-level access control**."



- When finished, restart your computer to activate the new device.



- Once the computer has been rebooted, a **Logon** window will appear and will require you to enter a username and password. Enter a username and password and click **OK**. Do not click the **Cancel** button, or you won't be able to log onto the network.
- Double-click the **Network Neighborhood** icon on the windows desktop, and you should see the names of the other PCs on the network.

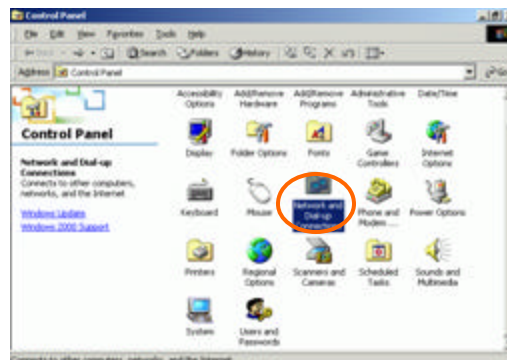
In Windows 2000/XP

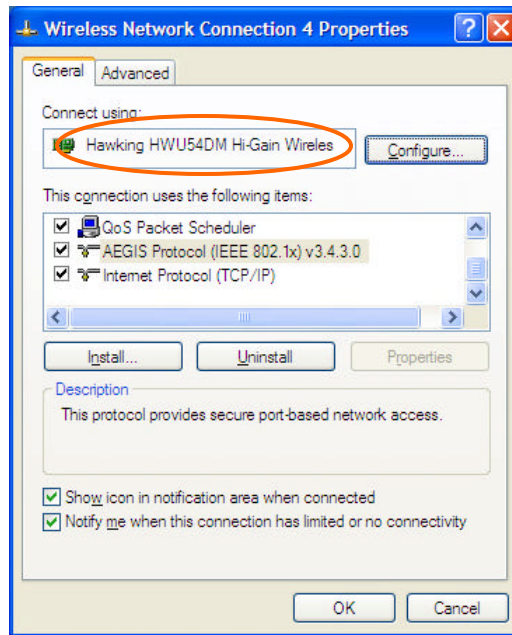
- [In Windows 2000]

Go to **Start** → **Settings** → **Control Panel** → **Network and Dial-up Connections** → **Local Area Connection** → **Properties**.

[In Windows XP]

Go to **Start** → **Control Panel** → **Network Connections** → **Wireless Network Connection** → **Properties**.



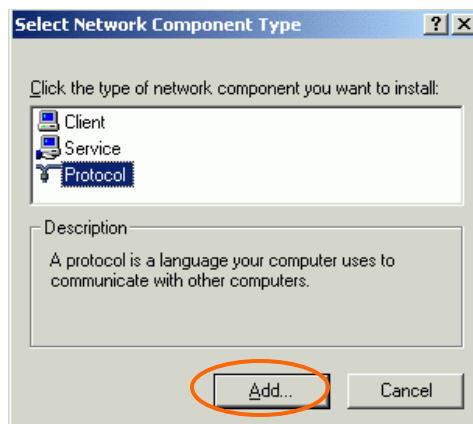


2. Make sure that you have all the following components installed.

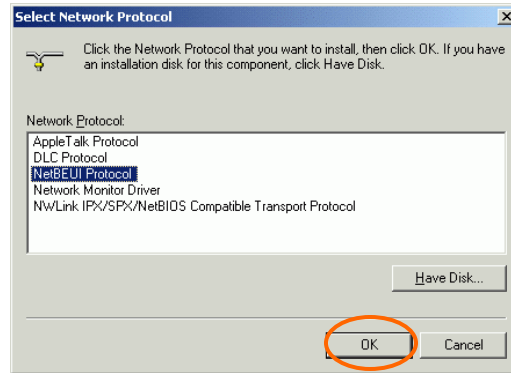
- **Client for Microsoft Networks**
- **NWLink NetBIOS**
- **NWLink IPX/SPX/NetBIOS Compatible Transport Protocol**
- **Internet Protocol (TCP/IP)**

If any components are missing, click on the **Install...** button to select the **Client/Service/Protocol** required.

3. After selecting the component you need, click **Add...** to install.



4. Select the network protocol you wish to add and click **OK**. This will return you to the **Local Area Connections Properties** window.



5. To allow your computer to be visible on the network, make sure you have checked off the **File and Printer Sharing for Microsoft Networks**.

When finished, you must **restart** your computer to complete the installation

4 Configuration Utility

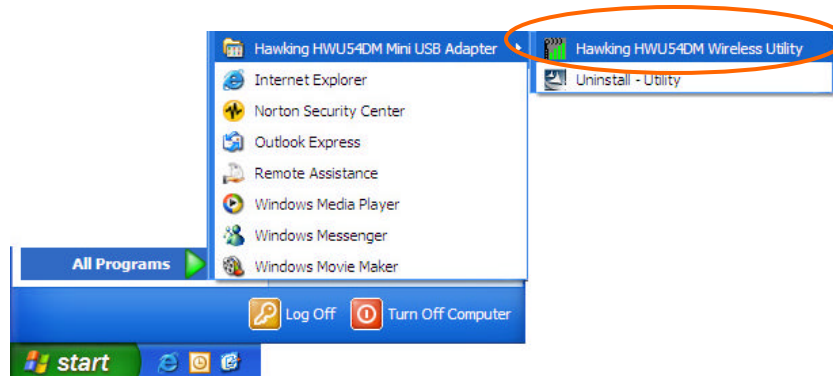
The Hawking Wireless Configuration Utility is a powerful application that helps you configure the HWU54DM and monitor the link status and statistics of your wireless connection. The Configuration Utility appears as an icon on the system tray of your Windows operating system while the adapter is running. You can open it by double-clicking on the icon.



You may also “Right-click” the icon, which will bring up the following options:

- **Launch Config Utilities**
Select “**Launch Config Utilities**” to open the Configuration Utility tool.
- **Use Config as Configuration Utility** or **Use Zero Configuration Utility as Configuration Utility**
Select which of the two configuration modes you would like to use. The Zero Configuration Utility automatically configures your adapter to work with any wireless network. If you would like to manually tweak your network connection settings, please select Config as Configuration Utility.
- **Exit**
Select “Exit” to close the Configuration Utility tool

NOTE If the icon is not present on the taskbar, you can launch the wireless utility from the Start Menu. If the icon doesn’t appear automatically, go to **Start → Programs → Hawking HWU54DM Wireless Configuration Utility → Hawking Wireless Configuration Utility**, it will appear in the task bar.

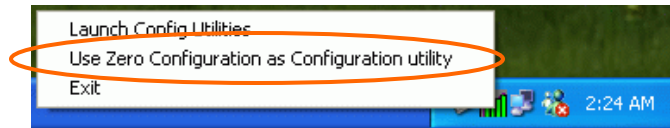


4.1 Accessing the Configuration Utility

All settings are categorized into 6 Tabs:

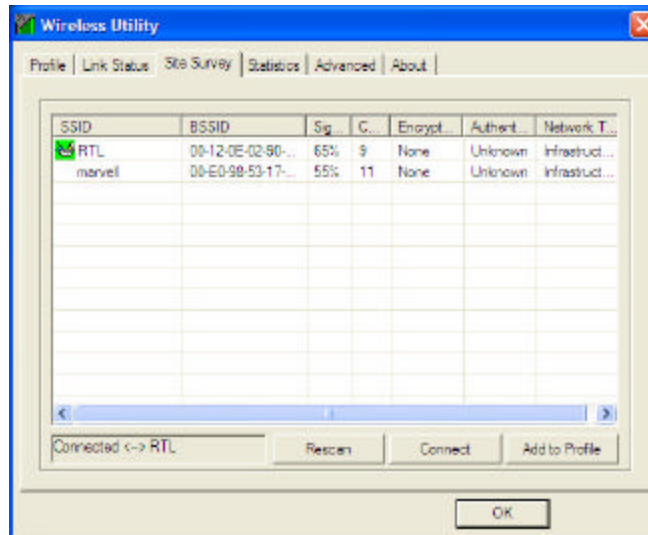
- Profile**
- Link Status**
- Site Survey**
- Statistics**
- Advanced**
- About**

Note: Only one configuration utility can be active at a time. When the ZCU is set to be the active utility, opening the TI utility - by double-clicking on the utility icon in the system tray or by right-clicking the icon and selecting Open - launches the ZCU instead of the TI utility.



4.2 Site Survey

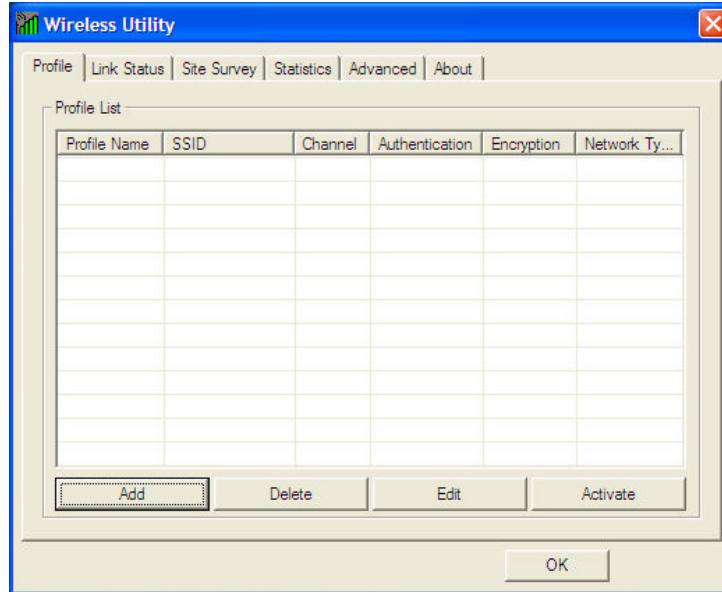
When you open the Configuration Utility, the system will scan all wireless channels to find all access points/stations within the accessible range of your card and automatically connect to the wireless device with the highest signal strength. When using the “Site Survey” option, all nearby networks will be listed. You can change your connection to another network or you may add one of the networks to your own profile list.



Parameter	Description
Available Networks	This list shows all available wireless networks within range of your card. It also displays the information of the networks including the SSID, BSSID, Signal Strength, Channel, Encryption, Authentication and Network Type. If you want to connect to any networks on the list, double-click the item on the list, and the card will automatically connect to the selected network.
Rescan Button	Click “Rescan” button to collect the information of all the wireless networks nearby.
Connect Button	Click “Connect” to connect to the selected network.
Add to Profile Button	Add the selected network to Profiles list.

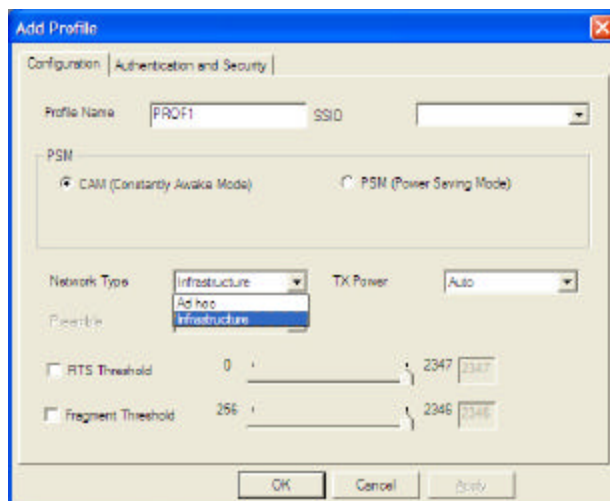
4.3 Profile

The “Profiles List” is for you to manage the networks you connect to frequently. You are able to Add/Delete/Edit/Activate a profile.



Parameter	Description
Profiles List	The profiles list display all the profiles and the relative information including Profile Name, SSID, Channel, etc.
Add/Delete/Edit Button	Click these buttons to add/delete/edit the selected profiles.
Activate Button	Click “Activate” to connect to the selected profile.

4.3.1 Configure the Profile (Add/Edit a Profile)

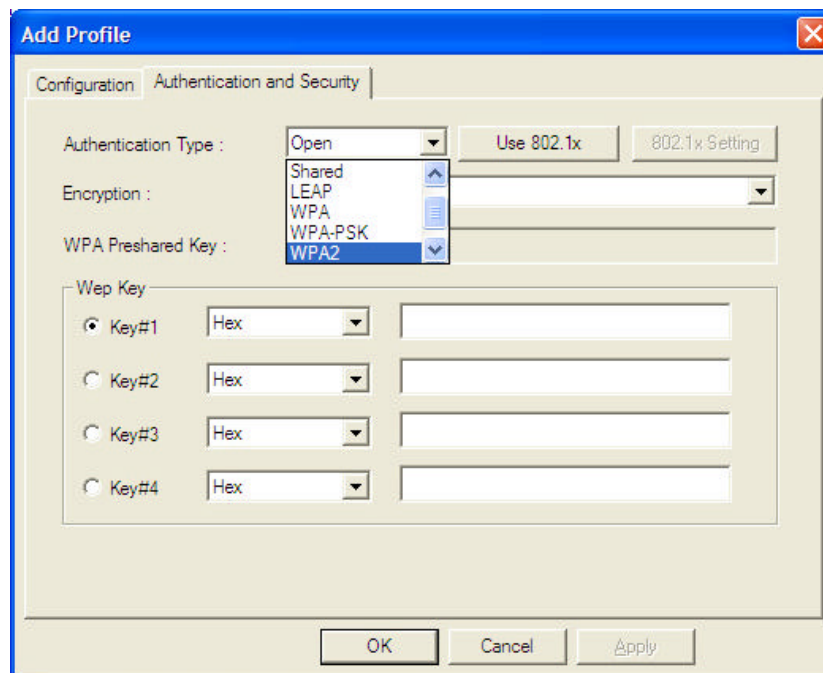


System Configuration

Parameter	Description
Profile Name	Define a recognizable profile name for you to identify the different networks.
SSID	<p>The SSID (up to 32 printable ASCII characters) is the unique name identified in a WLAN. The ID prevents the unintentional merging of two co-located WLANs.</p> <p>You may specify a SSID for the adapter and then only the device with the same SSID can interconnect to the adapter. If you want to add one of the networks nearby to the profile list, pull down the menu, all the networks nearby will be listed and you can add one of them to the profile list.</p>
Power Saving Mode	<p>The power saving function is only available when the network type is in Infrastructure.</p> <p>CAM(Constantly Awake Mode) – The adapter will always be set in active mode.</p> <p>Power Saving Mode – Place the adapter into power saving mode when it is idle.</p>

Parameter	Description
Network Type	<p>Infrastructure – This operation mode requires the presence of an 802.11 Access Point. All communication is done via the Access Point or Router.</p> <p>Ad-Hoc – Select this mode if you want to connect to another wireless station in the Wireless LAN network without going through an Access Point or Router. Peer to Peer.</p>
Transmit Power	If you wish to lower the transmit power of the card to save the power of your system, you can select the lower percentages from the list.
11B Preamble Type	<p>The preamble defines the length of the CRC block for communication among wireless stations. This option is only active in the Ad Hoc network.</p> <p>There are two modes including Auto and Long Preamble. If “Auto“ mode is selected, the card will auto switch the preamble mode depending on the wireless stations which the card is connecting to.</p>

RTS Threshold	Minimum packet size required for an RTS (Request To Send). For packets smaller than this threshold, an RTS is not sent and the packet is transmitted directly to the wireless network. Select a setting within a range of 0 to 2312 bytes. Minor change is recommended.
Fragment Threshold	The value defines the maximum size of packets; any packet size larger than the value will be fragmented. If you have decreased this value and experience high packet error rates, you can increase it again, but it will likely decrease overall network performance. Select a setting within a range of 256 to 2312 bytes. Minor change is recommended.
Channel	This setting is only available for Ad Hoc mode. Select the number of the radio channel used for the networking. The channel setting should be the same with the network you are connecting to.



4.3.2 Authentication vs. Security

Under the profiles tab, you are able to specify the type of security/authentication mode used to connect with a wireless network. To access, create a new profile or click “edit” on one of the profiles and select the “Authentication and Security” tab.

Parameter	Description
Authentication Type	<p>This setting has to be consistent with the wireless networks that the adapter intends to connect to. All security keys within a network must match to allow successful communications.</p> <p>Open – No authentication is needed among the wireless network.</p> <p>Shared – Only wireless stations using a shared key (WEP Key identified) are allowed to connecting each other.</p> <p>LEAP – Lightweight Extensible Authentication Protocol. Allows dynamic WEP keys and mutual authentication between a wireless client and a RADIUS server. LEAP allows for clients to reauthenticate frequently, upon each successful authentication, the clients acquire a new WEP key</p> <p>WPA-PSK –It is a special mode designed for home and small business users who do not have access to network authentication servers. In this mode, known as Pre-Shared Key, the user manually enters the starting password in their access point or gateway, as well as in each wireless stations in the network. WPA takes over automatically from that point, keeping unauthorized users that don't have the matching password from joining the network, while encrypting the data traveling between authorized devices. The encryption methods are including TKIP and AES. Note that this option is only available for Windows XP.</p> <p>WPA2 – This mode complies with the 802.11i standard. Option available on Windows XP computers only.</p>

Parameter	Description
Encryption Mode	<p>None – Disable the WEP Data Encryption.</p> <p>WEP – Enable the WEP Data Encryption. When the item is selected, you have to continue setting the WEP Encryption keys.</p> <p>TKIP – TKIP (Temporal Key Integrity Protocol) changes the temporal key every 10,000 packets (a packet is a kind of message transmitted over a network.) This insures much greater security than the standard WEP security.</p> <p>AES – AES has been developed to ensure the highest degree of security and authenticity for digital information and it is the most advanced solution defined by IEEE 802.11i for the security in the wireless network.</p>

Note: All devices in the network should use the same encryption method to ensure the communication.

WPA Pre-Shared Key

The WPA-PSK key can be from eight to 64 characters and can be letters or numbers. This same key must be used on all of the wireless stations in the network.

WEP Key (Key1 ~ Key4)

The WEP keys are used to encrypt data transmitted in the wireless network. There are two types of key length: 64-bit and 128-bit. Select the default encryption key from Key 1 to Key 4 by selected the radio button.

Fill the text box by following the rules below.

64-bit – Input 10-digit Hex values (in the “A-F”, “a-f” and “0-9” range) or 5-digit ASCII characters (including “a-z” and “0-9”) as the encryption keys . For example: “0123456aef” or “test1”.

128-bit – Input 26-digit Hex values (in the “A-F”, “a-f” and “0-9” range) or 13-digit ASCII characters (including “a-z” and “0-9”) as the encryption keys . For example:
“01234567890123456789abcdef” or “administrator”.

4.3.3 Enable WPA in Windows XP

You can opt to use the XP’s builtin wireless **Zero Configuration Utility (ZCU)** to control your wireless adapter settings and to enable security with full WPA and WEP authentication. This option disables Hawking’s wireless utility settings.

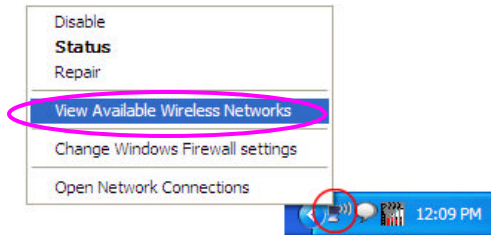
NOTE: These instructions assume you are running Windows XP with SP2. SP1 users may see slight changes in appearance of menu options.

Wi-Fi Protected Access (WPA) is a specification of standards-based, interoperable security enhancement that strongly increases the level of data protection (encryption) and access control (authentication) for existing and future wireless LAN systems. The technical components of WPA include Temporal Key Integrity Protocol (TKIP) for dynamic key exchange, and 802.1x for authentication.

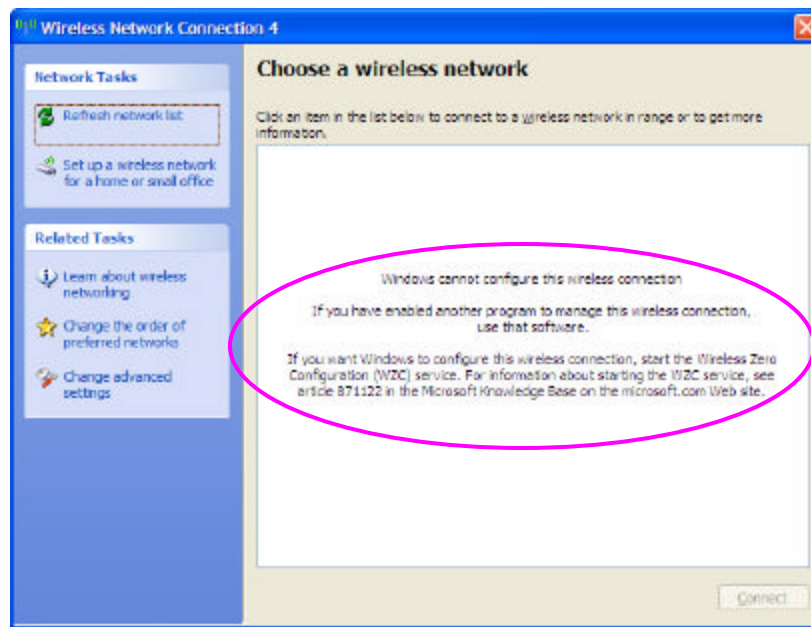
There are two types of WPA security: WPA-PSK (no server) and WPA (with server). WPA requires a Radius Server to complete authentication among wireless stations and Access Points. Typically, this mode is used in an enterprise environment. WPA-PSK uses a so-called pre-shared key as the security key. A pre-shared key is a password that every wireless station must use to access the network. Typically, this mode will be used in a home environment.

To enable the WPA function in Windows XP, the following software systems are required:

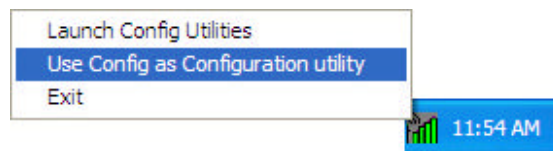
1. Right-click the **Windows wireless networks icon** located on your taskbar as shown below.



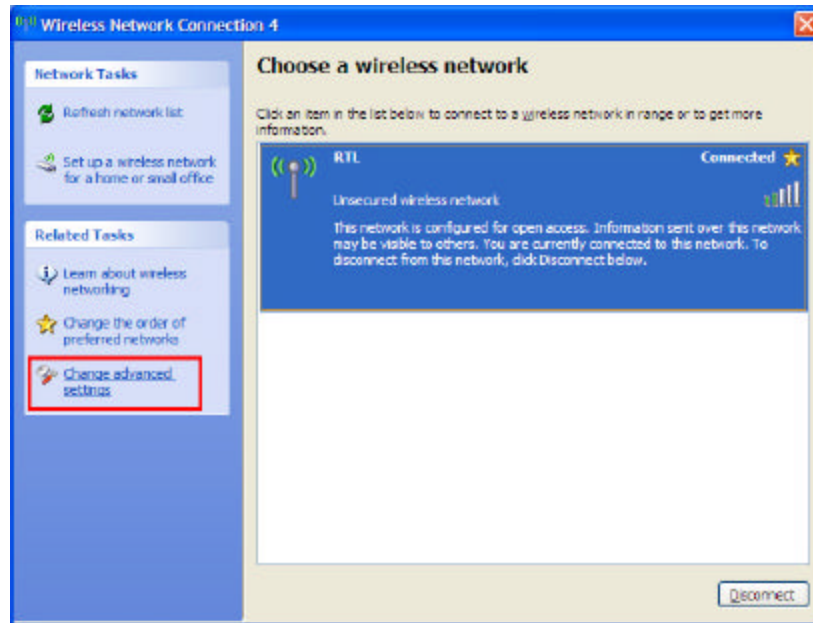
Select **“View Available Wireless Networks”** to open up the Wireless Networks window. If you get the following message below, please follow the next step. If not, skip to Step 3.



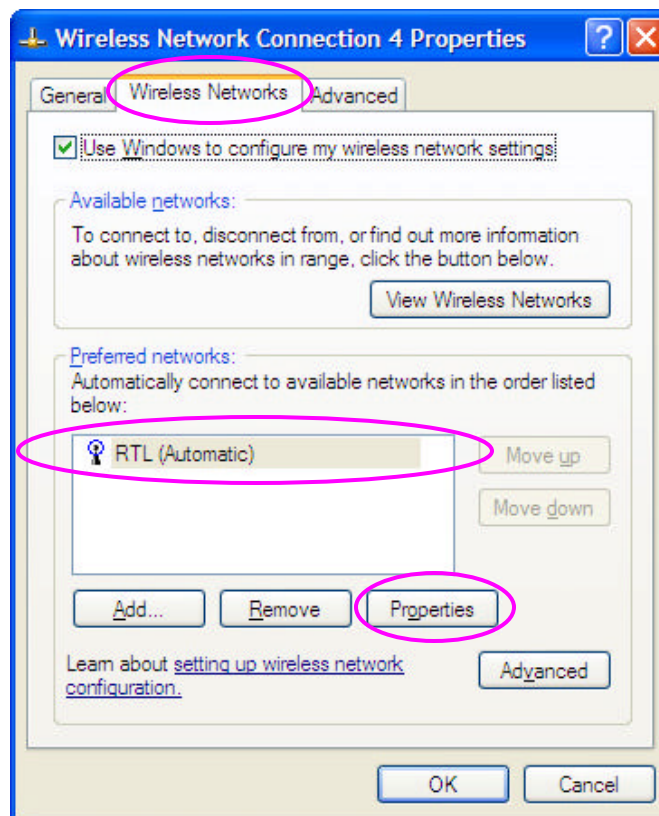
2. Right-click the **Hawking Wireless Configuration Utility icon** on the taskbar. To turn on ZCU, make sure **“Use Config as Configuration Utility”** is selected on the menu. It should look like this:



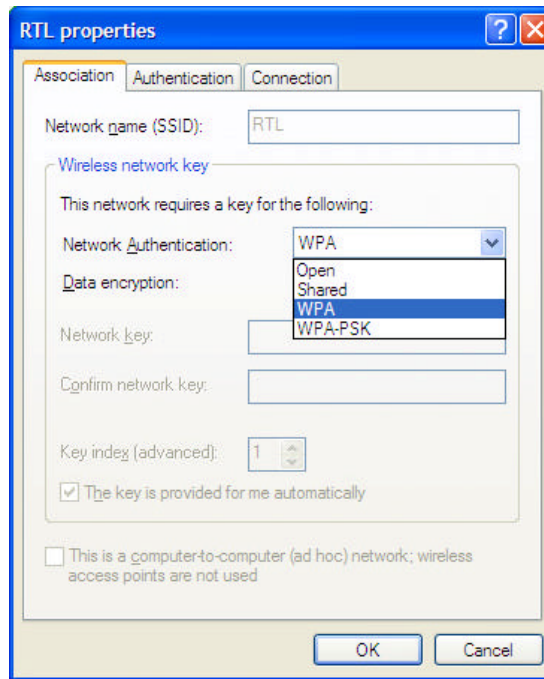
3. Go back to the Window Wireless Network window. Choose **“Change Advanced Settings”** from the left menu pane.



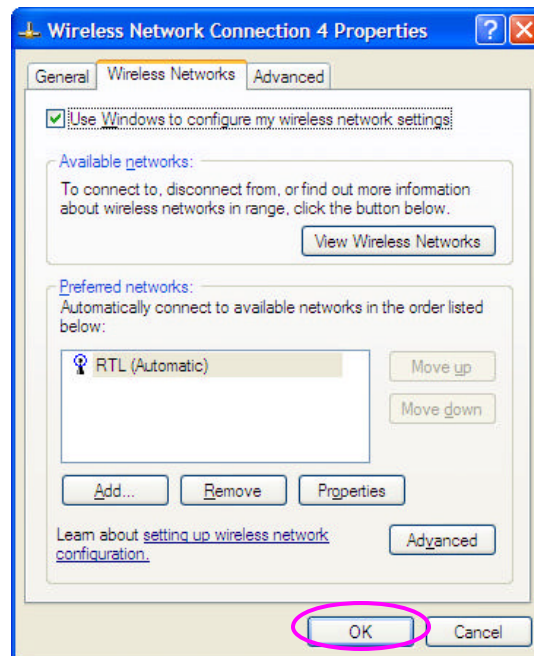
4. In the Wireless Networks tab, select your preferred wireless network you are connected to and click on **"Properties"**.



- Under the **Association** tab, select the type of Network Authentication your wireless network uses and determine the type of data encryption, if available. Ask your administrator for network information, if you need help. A list of network authentication terms is described on the next page.



- If you need to configure network authentication, go to the **Authentication** tab.
- Click **OK** once finished to complete the advanced setup. Then press OK again to close the window properties.

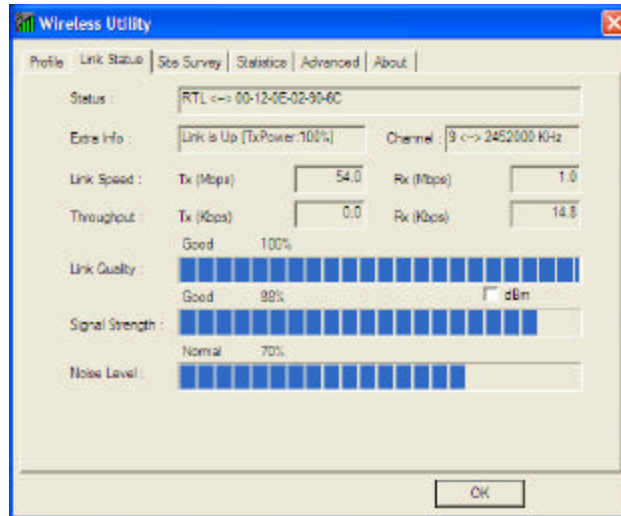


Parameter	Description
Network Authentication	<p>Open—No authentication is needed among the wireless network.</p> <p>Shared— Only wireless stations using a shared key (WEP Key identified) are allowed to connecting each other.</p> <p>WPA – This mode is for enterprise with an authentication server (Radius Server), WPA-enabled access point, and a WPA-enabled client. Once WPA is enabled, all clients and access points on the network must be WPA-enabled in order to access the network.</p> <p>WPA-PSK – It is a special mode designed for home and small business users who do not have access to network authentication servers. In this mode, known as Pre-Shared Key, the user manually enters the starting password in their access point or gateway, as well as in each PC on the wireless network. WPA takes over automatically from that point, keeping unauthorized users that don't have the matching password from joining the network, while encrypting the data traveling between authorized devices.</p>

Parameter	Description
Data Encryption	<p>WEP – In WPA or WPA-PSK mode, WEP is also able to be the encryption method for the transmission data.</p> <p>TKIP – TKIP (Temporal Key Integrity Protocol) changes the temporal key every 10,000 packets (a packet is a kind of message transmitted over a network.) This insures much greater security than the standard WEP security.</p> <p>AES – AES has been developed to ensure the highest degree of security and authenticity for digital information and it is the most advanced solution defined by IEEE 802.11i for the security in the wireless network.</p> <p>Note: All devices in the network should use the same encryption method to ensure the communication.</p>

4.4 Link Status

From the “Link Status” option, you can view all the information of the network you are connecting to. You can use this tool in while at the same time repositioning the Hi-Gain antenna to find the optimal location for antenna placement.



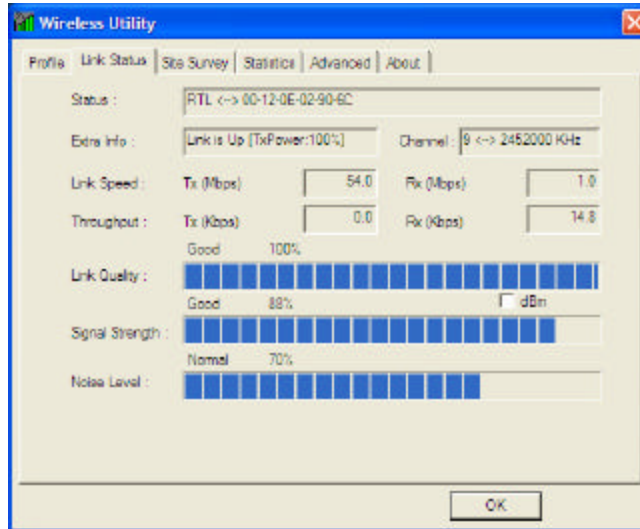
Parameter	Description
Status	Displays the SSID and MAC ID of the network the adapter is connected to.
Current Channel	Display the number of the radio channel and the frequency used for the networking.

Parameter	Description
Link Speed	Display the transmission and receive rate of the network. The maximum transmission rate is 54Mbps.
Throughput (Kbits/sec)	Display the speed of data transmitted and received.
Link Quality	This bar indicates the quality of the link. The higher the percentage, the better the quality.
dBm	If you want to know the signal strength in the unit of dBm, select this check box.
Signal Strength	This bar shows the signal strength level. The higher percentage shown in the bar, the more radio signal been received by the card. This indicator helps to find the proper position of the wireless device for quality network operation.

Noise Level

Measures the level of signal interference within a wireless network. The lower the noise level value, the better the connection.

4.5 Reading the Link Status Page and Obtaining the Strongest Connection



The Link Status page gives you information regarding your current wireless channel, transmit rate (speed) and link/signal quality. You will use this utility to figure out which antenna position results in the best performance and connection.

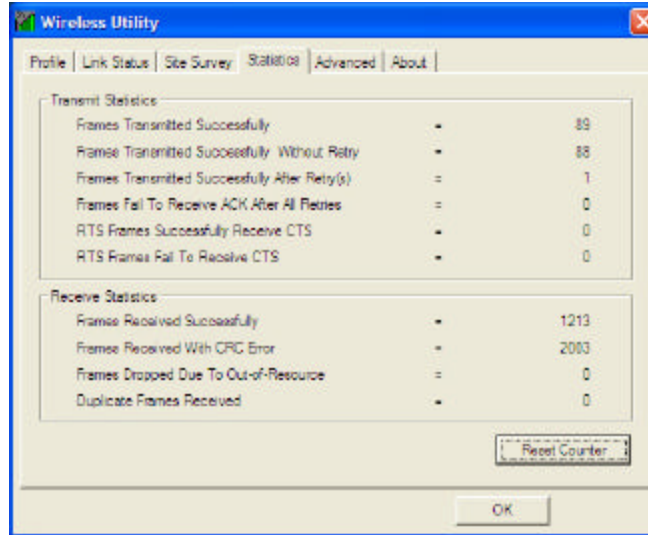
- 1) First you must determine where the location of your Wireless Access Point is within your network.
- 2) Position the directional antenna towards the location of the Access Point.
- 3) While viewing your Link Status utility, rotate the antenna clockwise and counter-clockwise slowly to figure out which position gives you the highest Link Quality and Signal Strength. Once you have determined which position gives you the best signal, leave the antenna in that orientation.



- 4) When you are not using the Hi-Gain Mini USB Wireless-G Adapter, carefully pull out the unit from the computer's USB port and put it in a safe place.

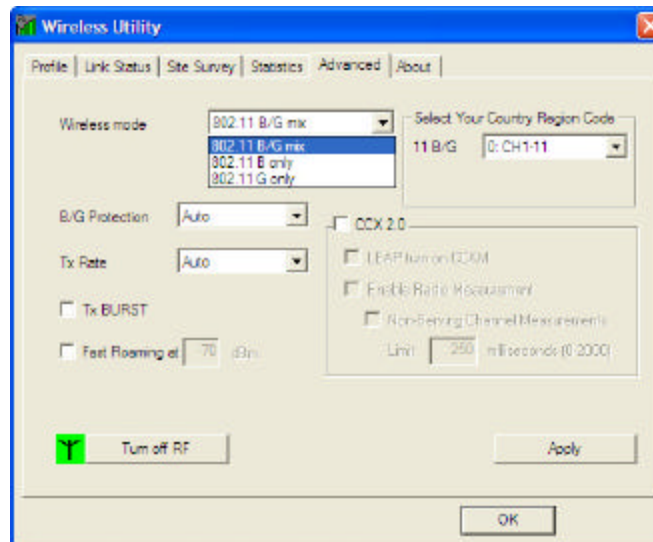
4.6 Statistics

This option enables you to view the available statistic information with its Tx counts (Tx success, Tx error, RTS Success and RTS Failed), and its Rx counts (Rx success, Rx error). You may reset the counters by clicking "Reset Counter".



4.7 Advanced

This option enables you to configure more advanced settings, for example: wireless mode, protection mode and etc.



Parameter	Description
Wireless Mode	802.11 B/G mix – If you have a mix of 802.11b and 802.11g wireless stations in your network, it is recommended to setting the card to this mode. This mode is also the default setting.

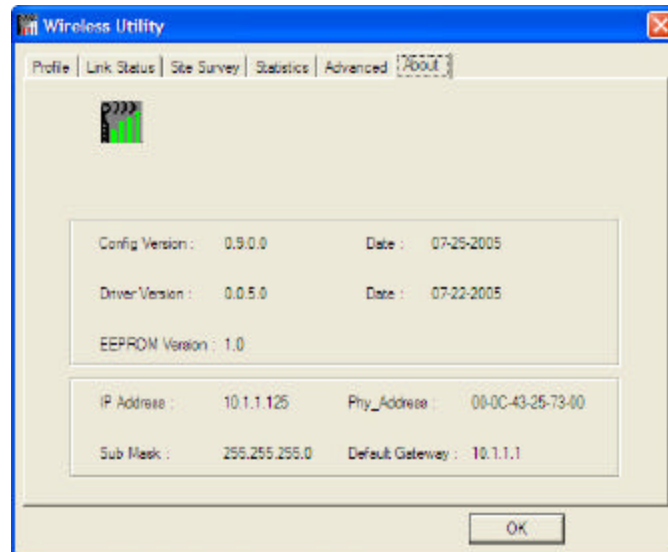
	<p>802.11 B or G only – This card can be compatible with both 802.11g and 802.11b wireless stations. If there are only 802.11b wireless stations in the network, you can set the card to this mode. The same goes with 802.11g only wireless stations.</p>
Tx BURST	<p>Tx Burst enables the card to deliver the better throughput in the same period and environment.</p>
B/G Protection	<p>If you have a mix of 802.11b and 802.11g wireless stations in the network, it is recommended that you enable the protection mechanism. This mechanism can decrease the rate of data collisions between 802.11b and 802.11g wireless stations. When the protection mode is enabled, the throughput of the card will be a little lower due to more complex data packets that must be transmitted.</p> <p>Auto – Based on the status of the network and automatically disable/enable protection mode.</p> <p>On – Always enable the protection mode.</p> <p>Off – Always disable the protection mode.</p>
Fast Roaming	<p>These settings should only be used for advanced system administrators only.</p>

Tx Rate	<p>There are several options including Auto/1/2/5.5/11/6/9/12/18/24/36/48/54Mbps for you to select. When the “Auto” is selected, the device will choose the most suitable transmission rate automatically. The higher data rate you designated in the network, the shorter distance is allowed between the card and the wireless stations.</p> <p>When the wireless mode is “802.11 B only”, the maximum data rate is 11Mbps (11b) so that there are only “Auto/1/2/5.5/11Mbps” options you can select.</p>
Turn Off RF Button	<p>If you want to turn off the radio of the card temporarily, click this button. To turn on the radio, click this button again.</p>
CCX 2.0	<p>Support Cisco Compatible Extensions function:</p> <ol style="list-style-type: none"> 1. LEAP turn on CCKM 2. Enable Radio Measurement: can channel measurement every 0~2000 milliseconds. 3. Enable QOS: enable Quality of Service. <p>NOTE: These settings should only be used for advanced system administrators only..</p>

When settings have been made, select "**Apply**" to place the changes into effect.

4.8 About

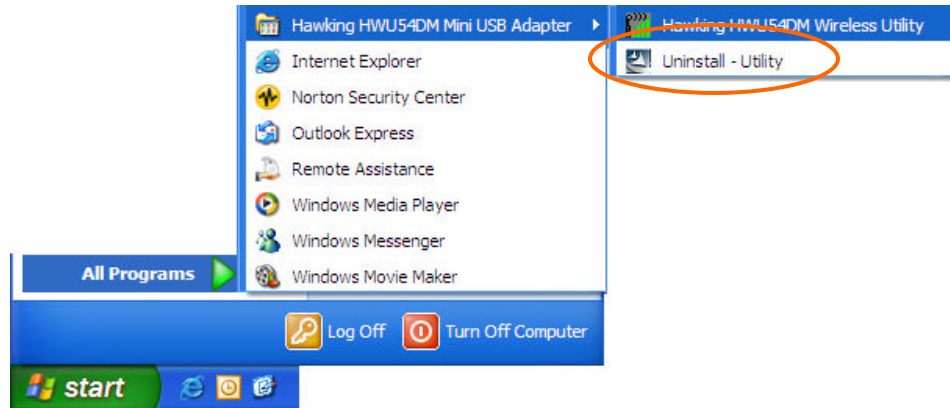
By choosing this option, you can click view software and driver version information, IP address and gateway address. The MAC Address of the network adapter is displayed in the screen as well.



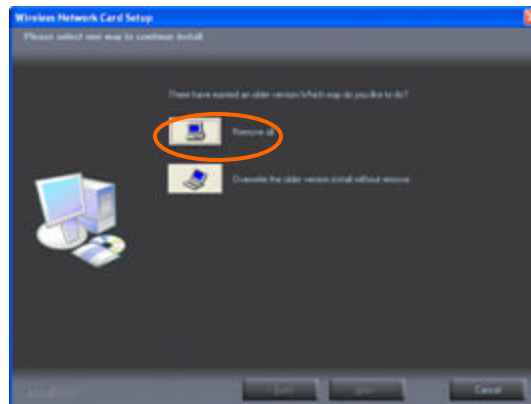
5 UNINSTALLATION

In case you need to uninstall the Utility and driver, please refer to below steps. (As you uninstall the utility, the driver will be uninstalled as well.)

1. Go to **Start** → **Programs** → **Wireless BETA** → **Uninstall - Utility**.



2. Click **Remove all** to complete the un-installation procedure.



6 Troubleshooting

This chapter provides solutions to problems usually encountered during the installation and operation of the adapter.

1. What is the IEEE 802.11g standard?

802.11g is the new IEEE standard for high-speed wireless LAN communications that provides for up to 54 Mbps data rate in the 2.4 GHz band. 802.11g is quickly becoming the next mainstream wireless LAN technology for the home, office and public networks.

802.11g defines the use of the same OFDM modulation technique specified in IEEE 802.11a for the 5 GHz frequency band and applies it in the same 2.4 GHz frequency band as IEEE 802.11b. The 802.11g standard requires backward compatibility with 802.11b.

The standard specifically calls for:

- A. A new physical layer for the 802.11 Medium Access Control (MAC) in the 2.4 GHz frequency band, known as the extended rate PHY (ERP). The ERP adds OFDM as a mandatory new coding scheme for 6, 12 and 24 Mbps (mandatory speeds), and 18, 36, 48 and 54 Mbps (optional speeds). The ERP includes the modulation schemes found in 802.11b including CCK for 11 and 5.5 Mbps and Barker code modulation for 2 and 1 Mbps.
- B. A protection mechanism called RTS/CTS that governs how 802.11g devices and 802.11b devices interoperate.

2. What is the IEEE 802.11b standard?

The IEEE 802.11b Wireless LAN standard subcommittee, which formulates the standard for the industry. The objective is to enable wireless LAN hardware from different manufactures to communicate.

3. What does IEEE 802.11 feature support?

The product supports the following IEEE 802.11 functions:

- CSMA/CA plus Acknowledge Protocol
- Multi-Channel Roaming
- Automatic Rate Selection
- RTS/CTS Feature
- Fragmentation
- Power Management

4. What is Ad-hoc?

An Ad-hoc integrated wireless LAN is a group of computers, each has a Wireless LAN adapter, Connected as an independent wireless LAN. Ad hoc wireless LAN is applicable at a departmental scale for a branch or SOHO operation.

5. What is Infrastructure?

An integrated wireless and wireless and wired LAN is called an Infrastructure configuration. Infrastructure is applicable to enterprise scale for wireless access to central database, or wireless application for mobile workers.

6. What is BSS ID?

A specific Ad hoc LAN is called a Basic Service Set (BSS). Computers in a BSS must be configured with the same BSS ID.

7. What is WEP?

WEP is Wired Equivalent Privacy, a data privacy mechanism based on a 40 bit shared key algorithm, as described in the IEEE 802.11 standard.

8. What is TKIP?

TKIP is a quick-fix method to quickly overcome the inherent weaknesses in WEP security, especially the reuse of encryption keys. TKIP is involved in the IEEE 802.11i WLAN security standard, and the specification might be officially released by early 2003.

9. What is AES?

AES (Advanced Encryption Standard), a chip-based security, has been developed to ensure the highest degree of security and authenticity for digital information, wherever and however communicated or stored, while making more efficient use of hardware and/or software than previous encryption standards. It is also included in IEEE 802.11i standard. Compare with AES, TKIP is a temporary protocol for replacing WEP security until manufacturers implement AES at the hardware level.

10. Can Wireless products support printer sharing?

Wireless products perform the same function as LAN products. Therefore, Wireless products can work with Netware, Windows 2000, or other LAN operating systems to support printer or file sharing.

11. Would the information be intercepted while transmitting on air?

WLAN features two-fold protection in security. On the hardware side, as with Direct Sequence Spread Spectrum technology, it has the inherent security feature of scrambling. On the software side, WLAN series offer the encryption function (WEP) to enhance security and Access Control. Users can set it up depending upon their needs.

12. What is DSSS? What is FHSS? And what are their differences?

Frequency-hopping spread-spectrum (FHSS) uses a narrowband carrier that changes frequency in a pattern that is known to both transmitter and receiver. Properly synchronized, the net effect is to maintain a single logical channel. To an unintended receiver, FHSS appears to be short-duration impulse noise. Direct-sequence spread-spectrum (DSSS) generates a redundant bit pattern for each bit to be transmitted. This bit pattern is called a chip (or chipping code). The longer the chip is, the greater the probability that the original data can be recovered. Even if one or more bits in the chip are damaged during transmission, statistical techniques embedded in the radio can recover the original data without the need for retransmission. To an unintended receiver, DSSS appears as low power wideband noise and is rejected (ignored) by most narrowband receivers.

13. What is Spread Spectrum?

Spread Spectrum technology is a wideband radio frequency technique developed by the military for use in reliable, secure, mission-critical communication systems. It is designed to trade off bandwidth efficiency for reliability, integrity, and security. In other words, more bandwidth is consumed than in the case of narrowband transmission, but the trade off produces a signal that is, in effect, louder and thus easier to detect, provided that the receiver knows the parameters of the spread-spectrum signal being broadcast. If a receiver is not tuned to the right frequency, a spread –spectrum signal looks like background noise. There are two main alternatives, Direct Sequence Spread Spectrum (DSSS) and Frequency Hopping Spread Spectrum (FHSS).

14. What is Hi-Gain and dBi?

Hi-Gain is Hawking Technologies high performance wireless distance extending product line. It encompasses a group of products and technologies used to help solve distance issues accompanied with WiFi products. A unit of measurement on antenna strength and power is dBi. The higher the dBi or gain level of an antenna the more powerful it is.

15. What is the difference between directional and omni-directional antennas?

Directional and omni-directional antennas determine the wireless output pattern of antennas. In standard installations it is normally the wireless access point that uses the omni-directional antenna (360 degree wireless output) while the clients (desktop or laptops) that use the directional antennas (concentrated narrow wireless signal) to create a stronger link directly to the access point.

16. How do I get an Optimal Wireless Connection with the HWJ54DM?

If pointing the antenna directly at the access point is not providing a sufficient signal connection then you can try bouncing the signals off walls. Wireless signals can reflect off walls or through windows to get to their desired location so try different positions to find the best antenna orientation for your network.

Free Manuals Download Website

<http://myh66.com>

<http://usermanuals.us>

<http://www.somanuals.com>

<http://www.4manuals.cc>

<http://www.manual-lib.com>

<http://www.404manual.com>

<http://www.luxmanual.com>

<http://aubethermostatmanual.com>

Golf course search by state

<http://golfingnear.com>

Email search by domain

<http://emailbydomain.com>

Auto manuals search

<http://auto.somanuals.com>

TV manuals search

<http://tv.somanuals.com>