

### Service Center

#### USA

Hyundai ImageQuest America  
3101 North First Street San Jose, CA 95134  
Hyundai tech support  
Tel : +800-568-0061, 408-232-8654  
Fax : +408- 232-8146  
e-mail : syuen@hyundaiqa.com

#### AVC USA, INC.

777 Mark Street, Wood Dale, IL 60191  
Tel : 630-595-0123 / 800-568-0060  
Fax : 630-595-2345 / 800-784-9422  
e-mail : avctech@avcusa.com

#### NEW ZEALAND

**TRANSTECH DISTRIBUTORS Ltd.**  
PO Box 12985 Penrose,  
Auckland New Zealand  
Tel : 09-571-0775  
Fax : 09-571-0776  
e-mail : LouisG@Transtech.co.nz  
WWW : www.transtech.co.nz

#### AUSTRALIA

**Thomas Electronics Australia Pty Ltd.**  
3 Sheridan Close  
Milperra NSW 2214, Australia  
Tel : +61 2 9773 7400  
Fax : 61 2 9773 7177  
Attn : Ms. Shiely Poniman

#### GERMANY

**Hyundai ImageQuest Europe GmbH**  
Geheimrat Hummel Platz 2  
65239, Hochheim, Germany  
Tel : 06146 / 904 444  
Fax : 06146 / 904 410  
e-mail : service@hyundaiq.de  
WWW : www.hyundaiq.com

#### JAPAN

**Hyundai ImageQuest JAPAN**  
Shin-Hibiya Bldg, East 5F 1-3-6  
Uchisaiwai-Cho, Chiyoda-ku,  
Tokyo, Japan 100-0011  
Tel : 03-5157-2286  
Fax : 03-5157-2284  
e-mail : pjkim@iqt.co.kr  
C/S P.J.Kim

[www.hyundaiQ.com](http://www.hyundaiQ.com)



Model. HQL260WR/320WR

## User's Guide

\* The above image may look different from the real product.

# FCC Information

## User Instructions

The Federal Communications Commission Radio Frequency Interference Statement includes the following warning :

**NOTE :** This equipment has been tested and found to comply with the limits for a Class B digital device pursuant to Part 15 of the FCC Rules.

These limits are designed to provide reasonable protection against harmful interference in a residential installation. This equipment generates, uses, and can radiate radio frequency energy and, if not installed and used in accordance with the instructions, may cause harmful interference to radio communications. However, there is no guarantee that interference will not occur in a particular installation.

If this equipment does cause harmful interference to radio or television receptions, which can be determined by turning the equipment off and on, the user is encouraged to try to correct the interference by one or more of the following measures :

- Reorient or relocate the receiving antenna.
- Increase the separation between the equipment and receiver.
- Connect the equipment into an outlet on a circuit different from that to which the receiver is connected.
- Consult the dealer or an experienced radio/TV technician for assistance.

## User Information

Changes or modifications not expressly approved by the party responsible for compliance could void the user's authority to operate the equipment.

Connecting of peripherals requires the use of grounded shielded signal cables.

## HYUNDAI LCD TV HQL260WR/320WR

## DECLARATION OF CONFORMITY

WE HYUNDAI ImageQuest CO., LTD.  
Ami-ri Bubal-Eub Ichon-Si Kyungki-Do  
467-860 KOREA

declare under our sole responsibility that the product:

Kind of equipment : LCD TV

Type-Designation : LT26AW000 / LT32AW000

to which this declaration relates is in conformity with the following standard(s) or other normative document(s)

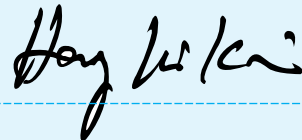
Safety : EN 60065 : 1998 / IEC60065 : 1998  
EMC : EN 55013 / 1990+A12 : 1994+A13 : 1996+A14 : 1999  
EN 55022 : 1998+A1 : 2000 Class B  
EN 55024 : 1998+A1 : 2001  
EN 55020 : 1994+A11 : 1996+A13 : 1996+A14 : 1999+A12 : 1999  
EN 61000-3-2 : 2000, EN 61000-3-3 : 1995+A1 : 2001

following the provisions of the Low Voltage Directive 73/23/EEC,  
93/68/EEC and the EMC Directive 89/336/EEC.

Accredited testlaboratory:  
TÜV Rheinland  
Am Grauen Stein  
51105 Köln

KOREA /MAY. 15, 2004  
*Place and date of issue*

HONG KI, KIM  
*(Name and signature of  
authorized person)*



## Important Tips

### Image Retention Effect(Image Sticking) —

#### 1. Cause :

- If LCD TV displays the same pattern for a long period of time, Image Retention Effect may develop due to the LCD structure.
- This is a common phenomenon that occurs in all LCD products on current market.

#### 2. Prevention :

- To avoid this matter, use the product after reducing brightness and contrast, especially when a still image is displaying for a long time. (Example : Contrast 50, Brightness 50 - See the page 36)  
Once Image retention occurs, change the mode into Video mode which displays more motion pictures. It will help reduce this effect, but cannot completely eliminate the effect once it occurs. When a fixed pattern is displayed often, screen brightness may get worse.

#### 3. Solution :

- Displaying a full white pattern for around 10 hours might help reduce latent image effect temporarily.
- It is not possible to permanently prevent Image Sticking Effect using current technology.

#### 4. Notice :

- It is very important to notify every buyer/customer of this information and all distributors/buyers/customers should be fully aware of this.
- A manufacturer cannot provide a technical support of Image Sticking Effect of LCD TV. And Warranty does not include Image Sticking Effect.

### Second Tip —

#### • Pixel Defect:

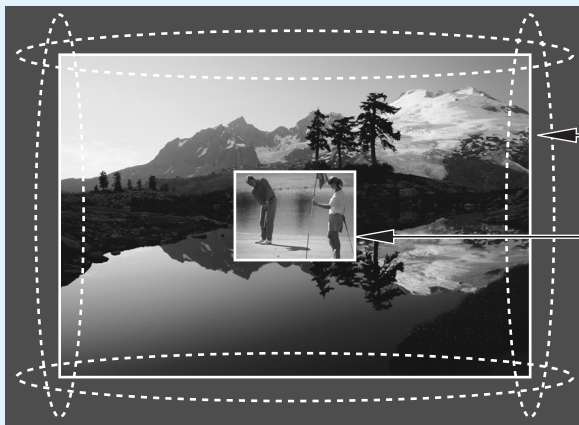
LCD TV panel is made of a group of refined pixels (cells). Due to the technological constraints of building an LCD chip, manufacturers can only guarantee that approximately 99.9% of pixels will be functional. Only a few of abnormal pixels may appear but this has no influence upon LCD TV's performance.

*\* Specification on 'dead pixel' of LCD panel complies to ISO13406-2 Standard.*



## Image Sticking Precaution

### Still Image/Panorama/Wide/4:3 in Motion Image —



Panorama, Wide, 4:3 aspect ratio

Box or Still image

- **Precaution :**

- Image Sticking could be come from Still Image and Boundary line for a long time display and Brightness gap in Boundary.
- This Matter(Image Sticking) is same thing under the other LCD's Company.
- Still Image/Letter in watching TV also will be effect to Image sticking.
- \*This matter(Image Sticking) is out of warranty.

## Features

### **A Wide Array of Screen Settings**

You can choose different screen settings depending on the type of program you are watching or the surrounding conditions (the lighting or the outside weather conditions).

You can switch among Standard, Sport, Natural and Mild, or you can configure the screen settings for yourself.

### **A Wide Array of Sound Settings**

You can choose an optimal sound setting for the type of program you are watching.

You can switch among Standard, Music, Film and Speech, or you can configure the settings for yourself.

### **Favorite Channel Memory**

You can store your favorite channels in the order of preference for easy channel selection.

### **Teletext Function**

You can display teletext information at any time on your TV.

### **SRS WOW(Surround) Audio Function**

You can listen to dynamic and surround sound only with ordinary speakers.

### **Variable Aspect Ratio**

You can adjust Aspect Ratio as you want

### **Auto ON/OFF Function**

This function allows you to turn on/off your LCD TV at the preset time.

# Table of Contents

## General Information

Safety Precaution .....	5
Contents of the Package .....	11
Separately Sold Products .....	11
How to Use the Kensington Security Slot .....	12
How to Use the Rear Cap and Cable Holder .....	13
How to Adjust the View Angle .....	14
How to Install Wall Mount Support .....	15
How to Install Wall Mount Frame .....	16
Parts Names and Functions .....	17
Remote Control .....	19

## Connections

Connecting Indoor/Outdoor TV Antenna (UHF/VHF) .....	23
Connecting to the antenna input connection on the external equipment .....	24
Before connecting the video connections to external devices .....	25
Connecting VCR, Cable/Satellite Receiver .....	26
Connecting a DTV Receiver or DVD Player .....	27
Playing back a tape recorded on a camcorder .....	28
Connecting to a PC .....	29
Resolutions Supported in PC .....	30
Scart Connection to the External Input/Output .....	31
Scart Pin Specifications .....	32

## Picture Setup

How to Select the Picture Mode .....	35
How to Set the Desired Picture .....	36
How to Set PIP [Mode] .....	37
Supported PIP Table .....	38
How to Set the Geometry (In PC mode) .....	39
How to Set the Geometry (In DTV mode) .....	40

## Sound Setup

How to Select the Audio Mode .....	43
How to Select the Desired Mode .....	44
How to Select the Balance, Volume and Sound Source .....	45
How to Select SRS WOW(Surround) .....	46
How to Listen to Stereo Sound/Dual Sound .....	47

## Channel Setup

How to Store Program Automatically .....	51
How to Edit Program Manually .....	52
Teletext Feature .....	55
Displaying the Teletext Information .....	56

## Function Setup

How to Select the Aspect Ratio .....	59
How to Freeze Picture .....	60
How to Set Key-Lock .....	61
How to Set OSD(On-Screen-Display) Display Time .....	62
How to Set No Key Operation Auto Power Off.....	63
How to Set No Signal Timeout .....	64
How to Set Your Favorite Channels .....	65
How to Set Noise Reduction and Use Factory Preset .....	66
Displaying Information and Clock .....	67
Choosing Your Language .....	68

## Clock Setup

How to Set Date and Clock .....	71
How to Set On/Off Time .....	72
How to Set Update Program .....	74
How to Set Sleep Time .....	75

## Appendix

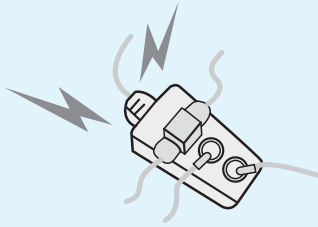
Glossary .....	77
Troubleshooting .....	79
Care and Cleaning .....	81
Product Specifications .....	82



# Safety Precaution

The contents of this section are provided for the safety of users and their property. Please read the instructions carefully before using.

## WARNING



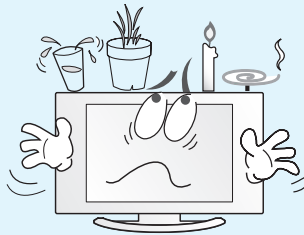
**Do not connect multiple electrical appliances to a single outlet.**  
- It may cause a fire due to overheating from the outlet.

If there is a persistent accumulation of dusts or water on the plug, please make sure to wipe it off using a dry cloth.

- It may cause a fire or an electric shock.



## WARNING



**Do not put a water bowl, vase, candle, bug repellent, smoke, cigarette, plants, or heavy thing on the LCD TV.**  
- It may cause electric shock or fire and also heavy things may cause injury when they fall.

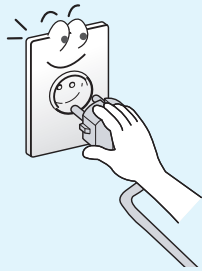
Do not install in a place where there is oil, smoke, excessive humidity, or where water may be sprinkled, dripped, splashed on it.

- This may cause electric shock or fire.



Safety instructions are divided into "Warning" and "Alert". Their meanings are as follows.

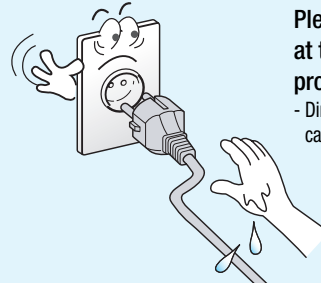
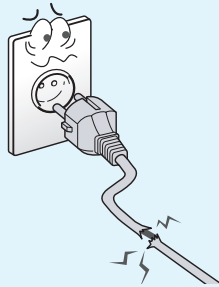
- ⚠ This icon is intended to alert the user to the presence of potential danger and important operating instructions.
- ⚠ **Warning** : When there is a possibility of serious injury or death if not observed.
- ⚠ **Alert** : When there is a possibility of slight injury or product damage if not observed.



**Firmly plug in the power cord so that it does not pull out.**  
- An unstable connection may cause fire.

**Do not use a damaged power cord or plug, or loose outlet.**

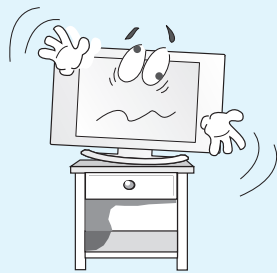
- They may cause electric shock or fire.



**Never touch the power plug or outlet with wet hands.**  
- This may cause electric shock.

**Please avoid touching the panel at the rear of LCD TV as it is producing high temperature.**

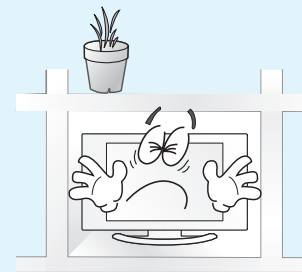
- Direct contact with the hot surface may cause physical burns.



**Do not install on an unstable place or small support.**  
- This may cause the LCD TV to fall, resulting in serious injury to a child or adult.

**Do not use or store a flammable spray or inflammable things near the LCD TV.**

- They may cause explosion or fire.



**Do not install the LCD TV in a bookshelf, closet, or a place where there is poor air circulation.**

- Fire may be caused due to the rise of internal temperature.

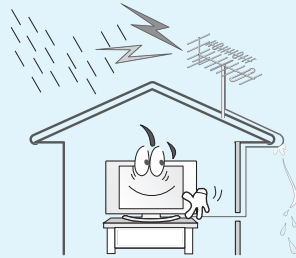




# Safety Precaution .....Continued from previous page

The contents of this section are provided for the safety of users and their property. Please read the instructions carefully before using.

## WARNING



Make the antenna cable loop at the entrance of the building. Any necessary action such as making the antenna cable loop at the entrance of the building should be taken to prevent rainwater on the outdoor antenna cable from possibly running into the indoor.  
- If raindrop gets into the LCD TV, it may cause a fire or an electric shock.

**Never attempt to open, fix, or modify the LCD TV.**

- When there is a need for fixing, call a service center. Fire or electric shock may be caused.



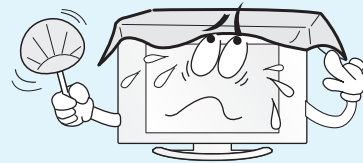
## WARNING



**Do not place any heat sources such as radiators and heat registers, etc. on or near the LCD TV.**  
- It may cause a fire.

**Do not block ventilating slits.**

- Blocking the ventilation slits prevents inner heat from escaping, which may lead to a fire.



Safety instructions are divided into “Warning” and “Alert”. Their meanings are as follows.

- ⚠ This icon is intended to alert the user to the presence of potential danger and important operating instructions.
- ⚠ **Warning** : When there is a possibility of serious injury or death if not observed.
- ⚠ **Alert** : When there is a possibility of slight injury or product damage if not observed.

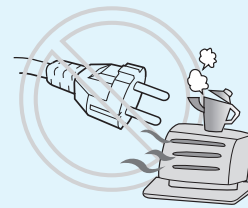


Do not put a metallic object like chopstick, wire, or puncher or inflammables like paper or a match in a vent, headphone jack, or AV jacks of the LCD TV.

- Electric shock or fire may be caused.

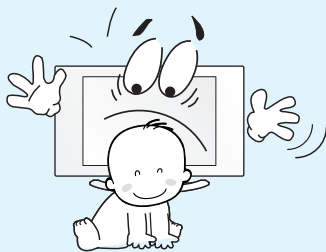
When the LCD TV produces abnormal noise, burning smell, or smoke, unplug the LCD TV immediately and call a service center.

- Electric shock or fire may be caused.



Ensure the power cord doesn't trail across any hot objects like a heater.

- This may cause a fire or an electric shock.

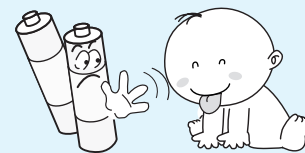
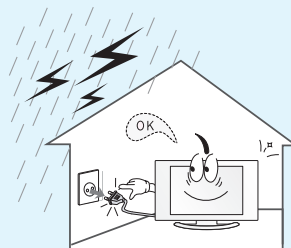


Do not install the product on the floor.

- If it falls over, your child may be injured.

Unplug the product during lightning or thunderstorms and never touch the antenna cable.

- It may cause a fire or an electric shock.



Keep the remote control batteries out of sight and out reach of children.

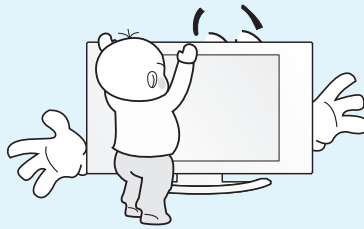
- If your child swallows a battery, see your doctor immediately.



# Safety Precaution .....Continued from previous page

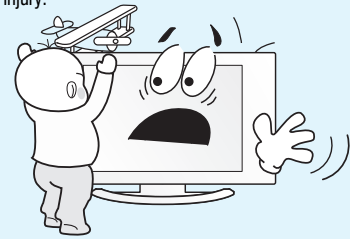
The contents of this section are provided for the safety of users and their property. Please read the instructions carefully before using.

## WARNING

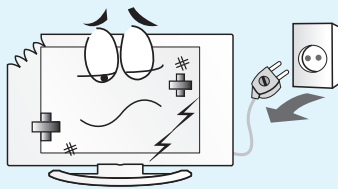


**Do not allow children to climb or play on the LCD TV.**  
- If it falls over on children, it may cause serious injury.

Do not place toys and cookies, etc. on the LCD TV, which may attract children's attention. Children will climb on the LCD TV to reach whatever they have their eyes on.  
- If it falls over on children, it may cause serious injury.



## ALERT



**In the event of damaging or dropping the product, switch off the power and remove the plug.**  
- Using a damaged product may cause an electric shock or a fire.  
- Contact your local service center.

**Unplug when you do not use your LCD TV for a long time.**  
- If dust is stacked on the LCD TV, electric shock or fire may be caused from heat, fire, or deterioration of insulation.



## HYUNDAI LCD TV HQL260WR/320WR

Safety instructions are divided into "Warning" and "Alert". Their meanings are as follows.

- ⚠ This icon is intended to alert the user to the presence of potential danger and important operating instructions.
- ⚠ **Warning** : When there is a possibility of serious injury or death if not observed.
- ⚠ **Alert** : When there is a possibility of slight injury or product damage if not observed.

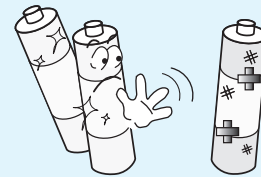
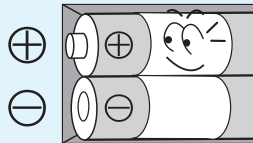


When cleaning the LCD TV, make sure to disconnect the power plug and use a dry, soft cloth for a cleanup.

- Please avoid using chemicals such as wax, benzene, alcohol, thinner, mosquito spray, air freshener, lubricant or synthetic detergent.

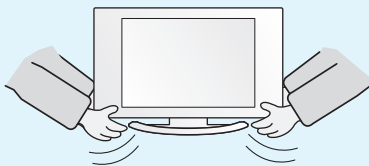
When replacing batteries, make sure to match the batteries to the (+) and (-) marks in the battery compartment.

- Mismatching of polarities may result in internal damage to batteries, fire due to leakage or contamination.



Always use the standard batteries and avoid using old batteries together with new ones.

- Otherwise it may result in internal damage to batteries, fire due to leakage or contamination.

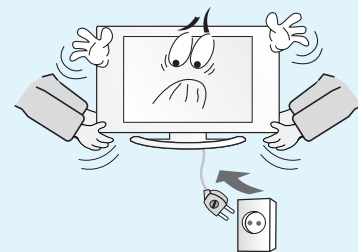


When moving the LCD TV, 2 or more people are advised to carry it.

- Injury or damage may be caused when the LCD TV falls.

Consult a service center or customer service for inside cleaning about once a year.

- When dust is piled inside the LCD TV for a long time, fire or malfunction may be caused.



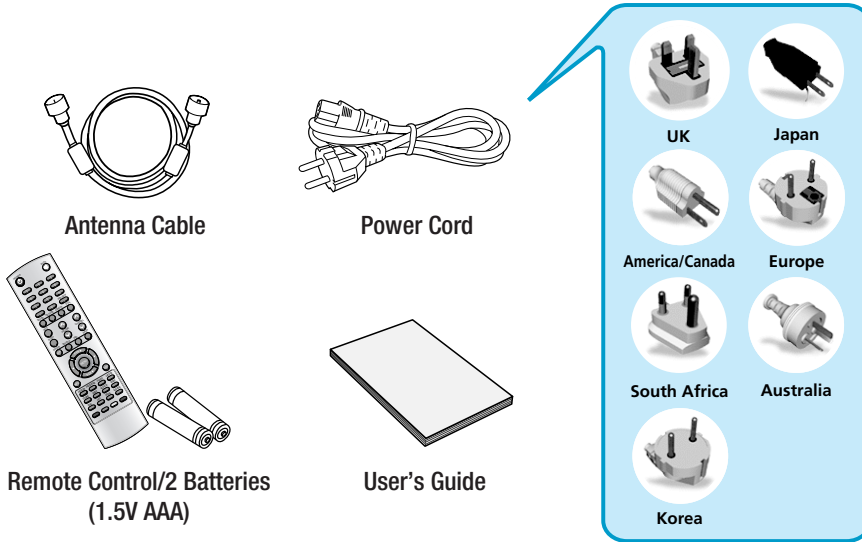
Before moving your LCD TV, ensure to switch off the power and unplug all the electrical cords and the external connection cords such as an antenna cable and other source connections, etc.

- An electrical cord(s) may be damaged resulting in a fire or an electrical shock.



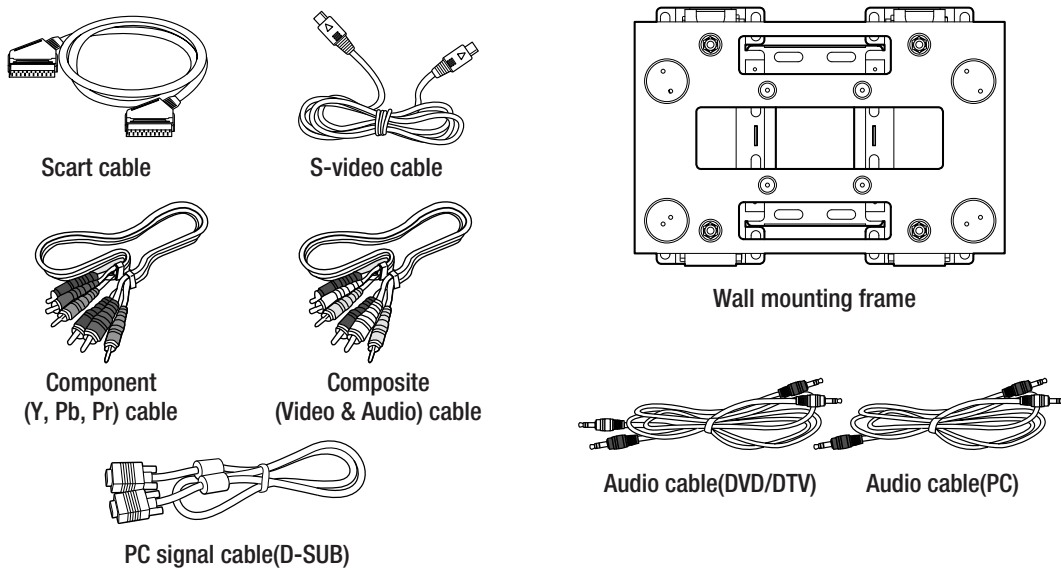
## Contents of the Package

To purchase additional parts, consult a distributor or selling agent.



## Products Sold Separately

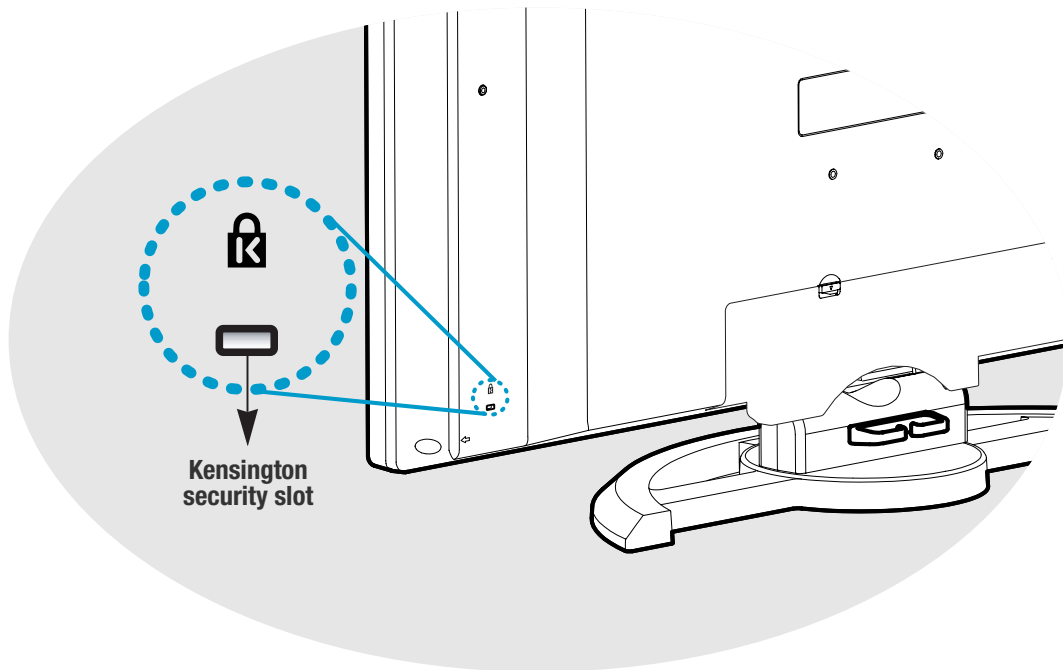
If you want to purchase separately sold products, consult a service center, electronics shops, or parts seller.





## How to Use the Kensington Security Slot

- This display unit supports a Kensington-type security device to secure your LCD TV. Kensington lock is not included.
- To purchase and install the Kensington locking device, please refer to the following contact information.



### \* Kensington Technology Group

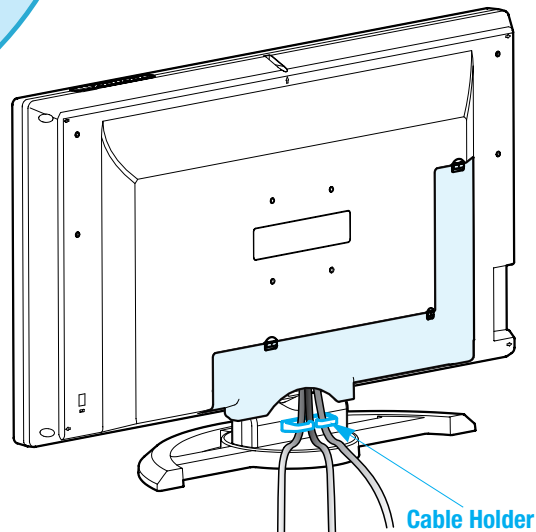
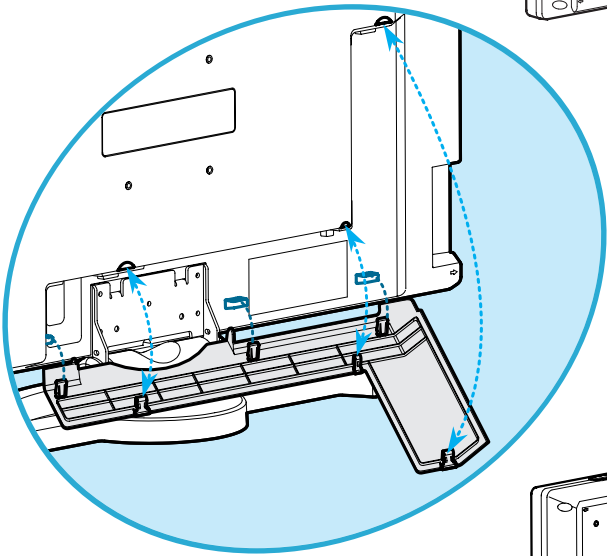
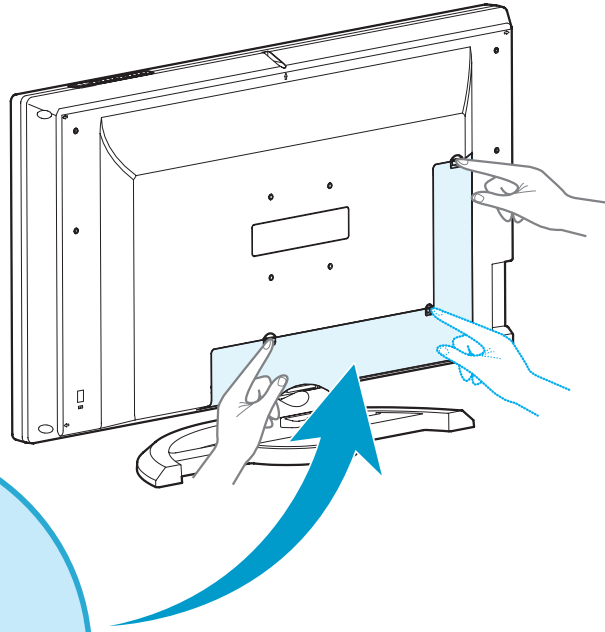
- Address : 2000 Alameda de las Pulgas 2F san mateo, California 94403-1289
- Tel : +1 650 572 2700      • Fax : +1 650 572 9675
- Web-site : [www.kensington.com](http://www.kensington.com)



## How to Use the Rear Cap and Cable Holder

The Rear Cap and Cable Holder allow you to organize the connection cables on the rear of the product.

1. Pressing and pulling the three hooks on the rear can detach the Rear Cap.
2. Connect your cables to the terminals of the rear.
3. Organize the connected cables neatly using the Cable Holder.
4. Align the rear cover with three guide holes on the bottom of the TV and push the cover firmly toward the front of the TV until the latches click into the locked position.



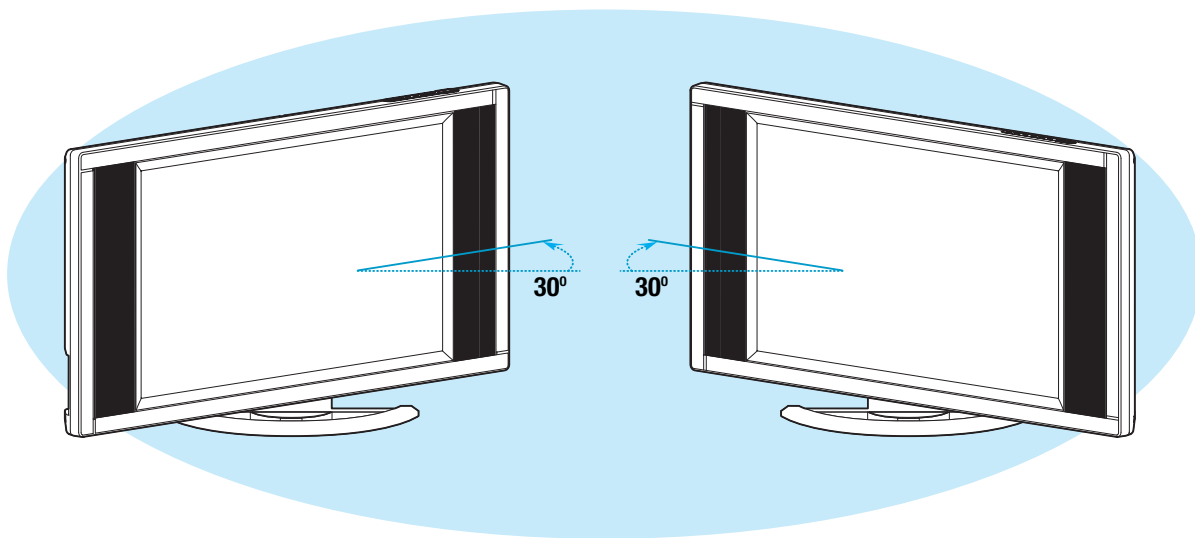
# HYUNDAI LCD TV HQL260WR/320WR

GENERAL INFORMATION

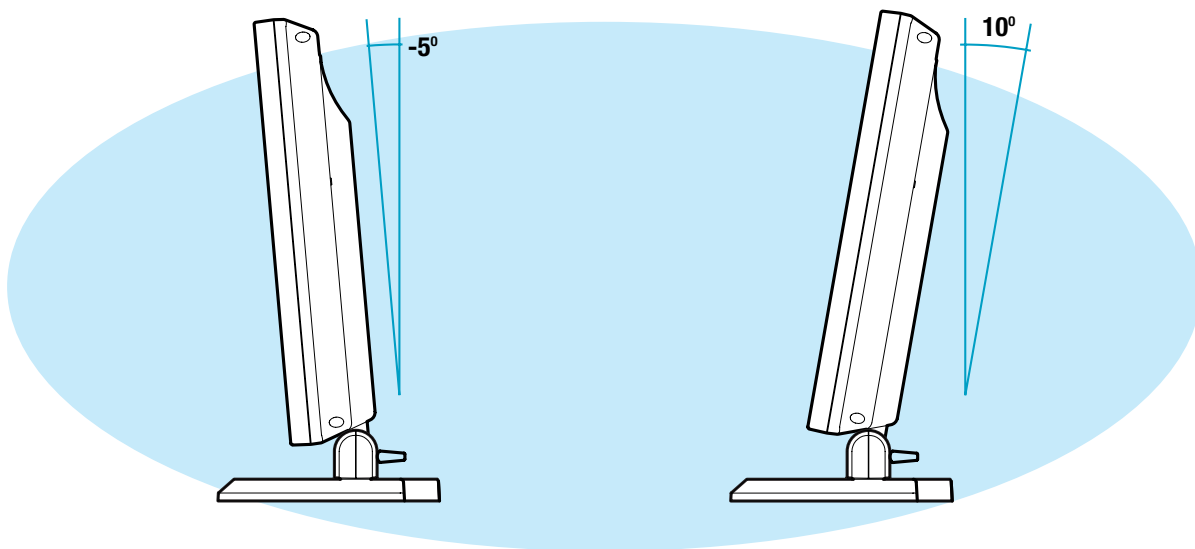
## How to Adjust the View Angle

You can adjust the angle of the view for the desired view angle.

You can adjust any angle within a range of 30° to the left or right.



You can adjust the tilt of the TV from -5° to 10° after the installation.



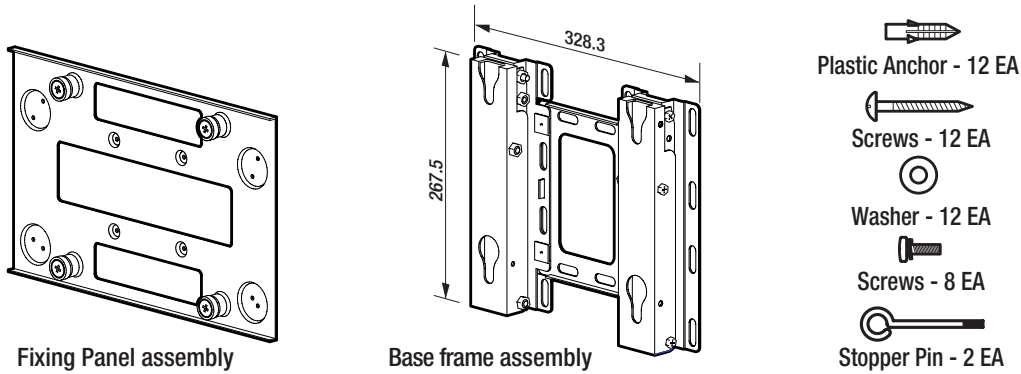


# How To Install Wall Mount Support

## 1. Caution

1. Install on the vertical wall surface only.
2. Do not install on the following places to protect the performance of LCD TV and to prevent malfunction.
  - Near sprinkler Detector,
  - Near heating devices,
  - Places where vibration or shock may be applied ,
  - Near high voltage electric power line
3. Install in a proper method with the structural materials of the wall. If the wall is not strong enough to stand weight of TV set, reinforce the wall surface before installation.
4. Do not install within a wall.

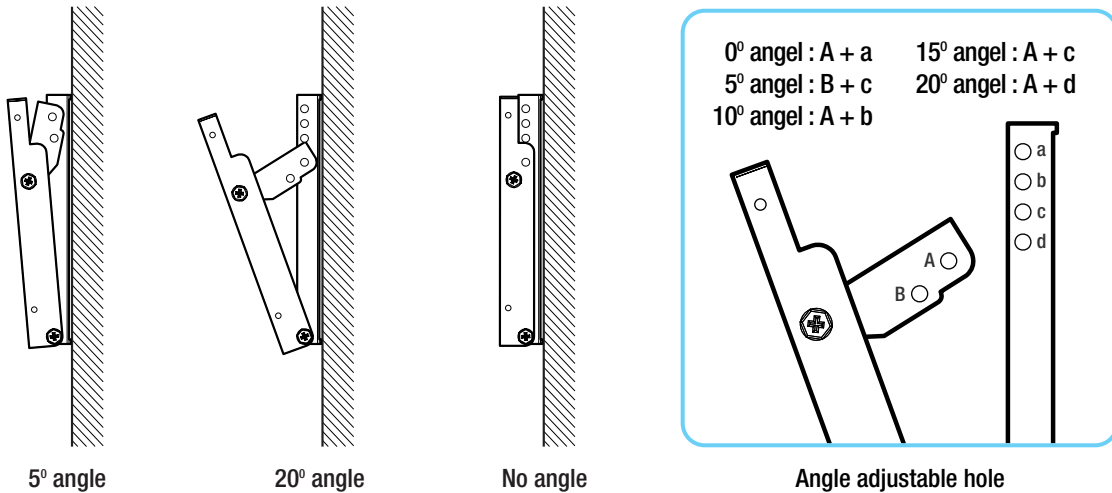
## 2. Parts configuration chart



\* The above image may look different from the real product.

## 3. Angle Adjustment(Optional)

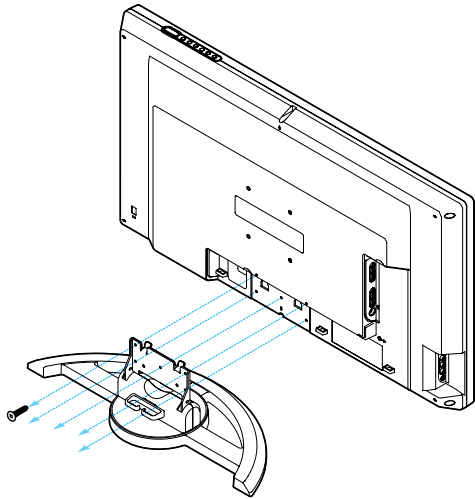
The angle of LCD TV may be adjusted from 0 degree to 20 degree in 5 steps with 5 degrees. Use the angle adjustable hole on the side of fixing panel when adjustment is needed.



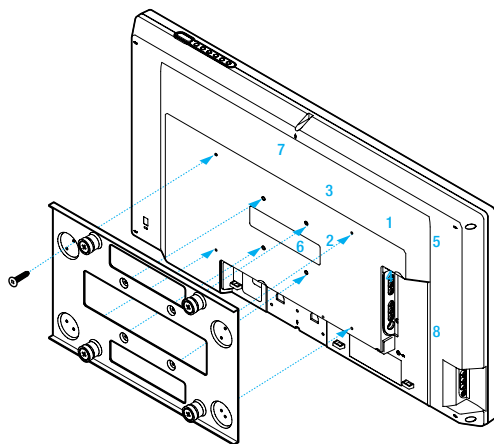
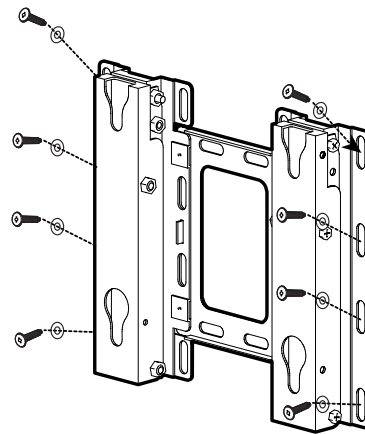
## How To Install Wall Mount Frame

### 4. Installation Method

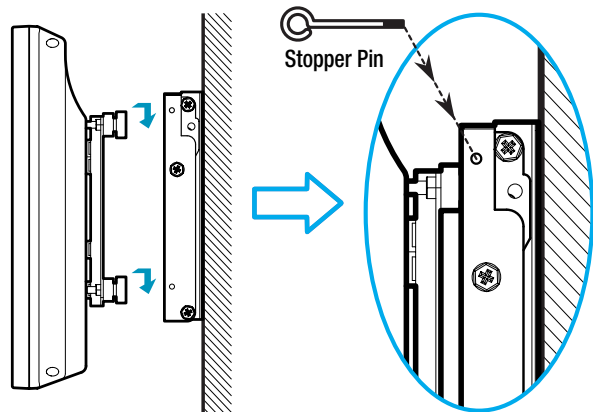
1. Unscrew screws fasted on 5 spots on the stand of LCD TV.



3. Fix the Base Frame Assy on the wall with screws or nails.



2. Fasten the Fixing Panel assembly on the back of LCD TV as shown on the picture. (Numbering step)



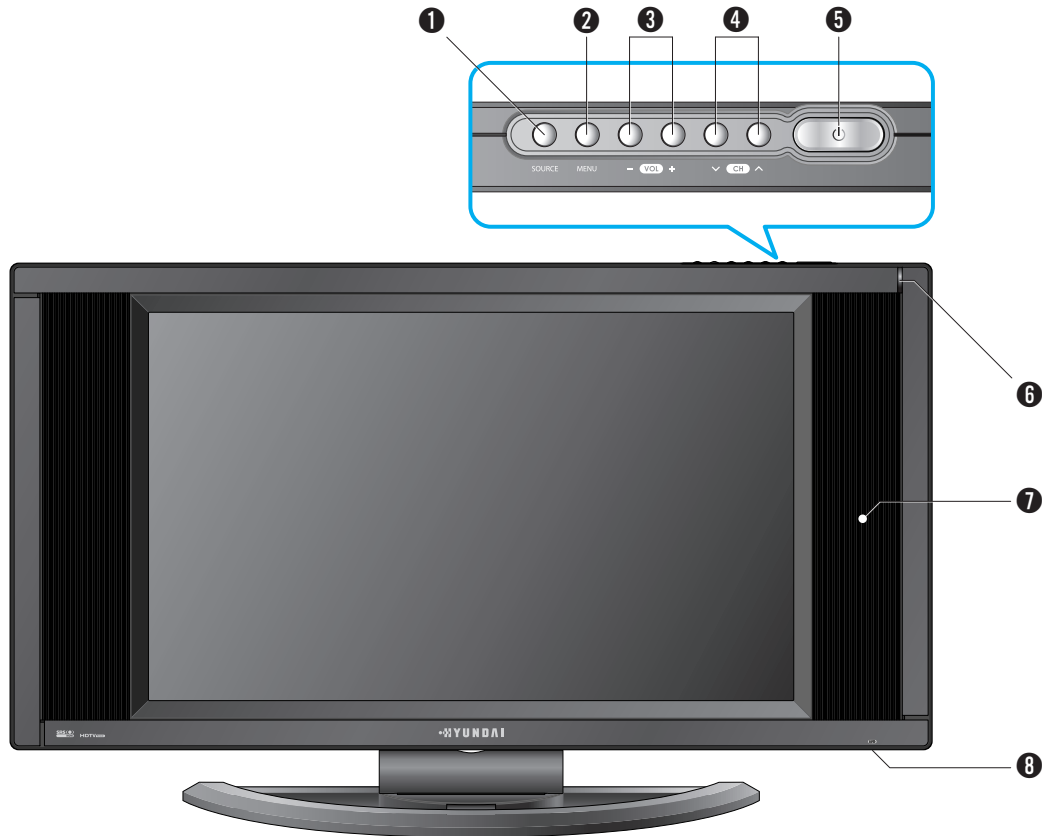
4. Hang the LCD TV assembled the Fixing Panel Assy on the Base Frame Assy. (Tighten the Stopper Pin as shown so that the LCD TV cannot be separated from the Base Frame Assembly.)





## Parts Names and Functions

### Front View



\* The above image may look different from the real product.

- 1 Source button**  
Use this button to switch among inputs connected to the LCD TV.
- 2 Menu button**  
Use this button to display or exit from menus.
- 3 Volume buttons**  
Use these buttons for your desired sound level. These buttons also serve as the cursor of Select/Adjust when in Menu mode.
- 4 Channel buttons**  
Use these buttons to change channels. These buttons also serve as the cursor of Down and Up buttons when in Menu mode.

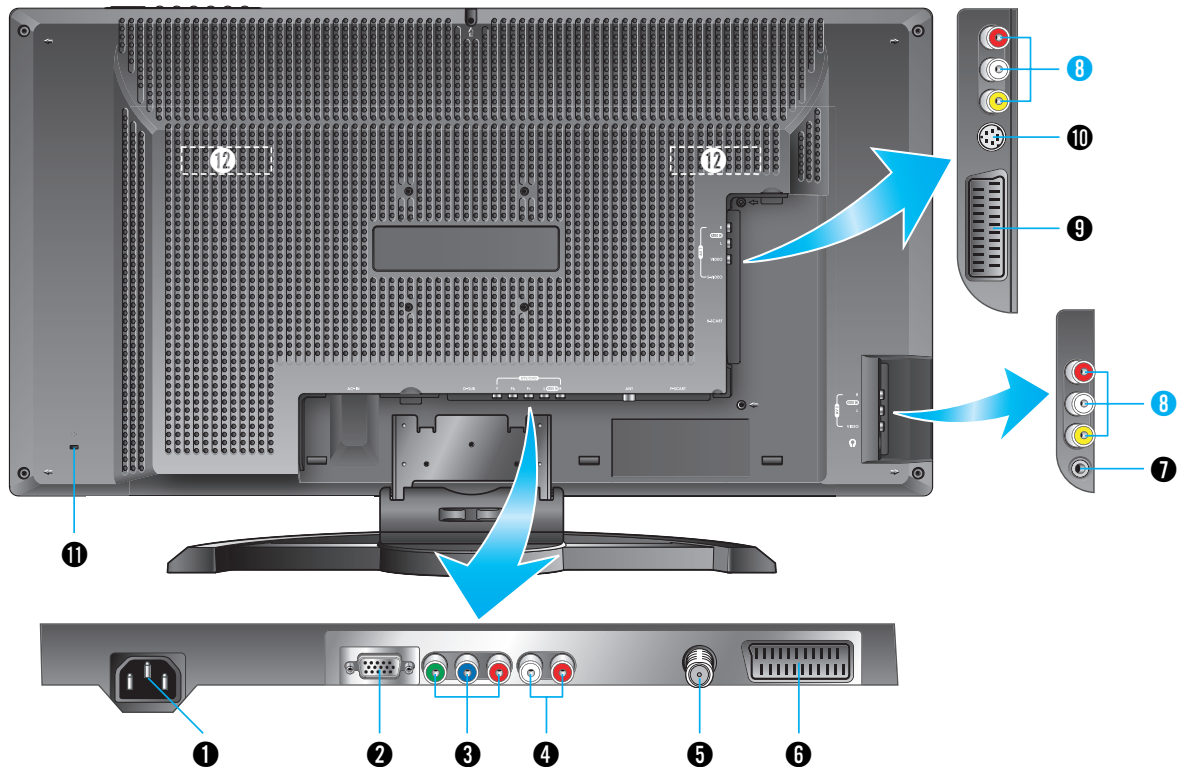
- 5 Standby/On button**  
Use this button to turn on or off the LCD TV.
- 6 Remote sensor and power LED.**  
- Point the remote control toward here.  
- It displays standby or operation status.

- 7 Speaker**
- 8 Power Switch (For 32" TV only)**  
- Power Indicator Status -

Indicator	Status
Red	Stand-by
Green	Power on
Green blinking	Remote control

## HYUNDAI LCD TV HQL260WR/320WR

## Rear View



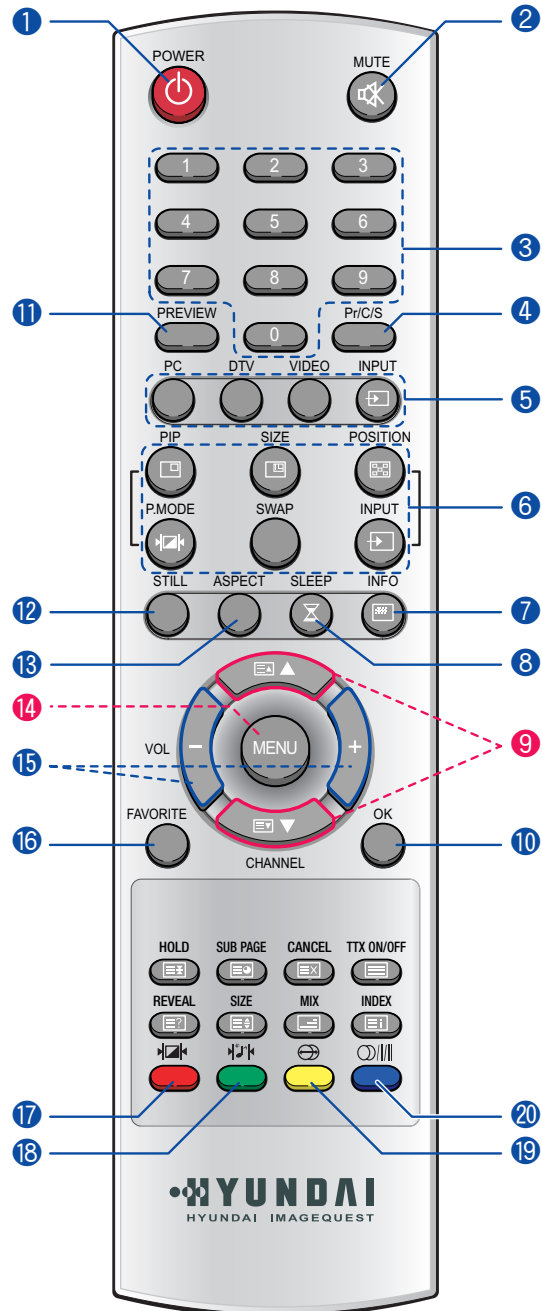
\* The above image may look different from the real product.

- 1 Power input terminal**  
Power cord is connected here.
- 2 D-SUB input terminal**  
Connect to the DTV Receiver with D-Sub terminal or to RGB output terminal of a PC.
- 3 Component input terminal for DVD or DTV**  
Connect to the Component output terminal of DVD player/DTV receiver.
- 4 Audio input terminal for PC, DVD or DTV**  
Connect to the audio output terminal of PC/DVD player/DTV receiver.
- 5 ANT. input**  
This allows you to connect your antenna.
- 6 F SCART input terminal**  
For Composite Video/Audio or R,G,B inputs used in the European area.
- 7 Headphone Jack**  
Connect to the Headphone.
- 8 Video Composite input terminal for VCR**  
Connect to the Composite Video output terminal of VCR or DVD player.
- 9 H SCART input terminal**  
For Composite Video input and audio inputs used in the European area.
- 10 S-Video input terminal**  
Use this for the better video quality than Composite Video input terminal.
- 11 Kensington security slot**  
This display unit supports a Kensington-type security device to secure your LCD TV. Kensington lock is not included.
- 12 Handgrip for carrying(For 32" TV only)**



## Remote Control

- 1 **POWER/STANDBY**  
Use this button to turn the TV set on or off.
- 2 **MUTE**  
Use this button to turn the sound off completely.
- 3 **NUMERIC KEYS**  
- Use these buttons to select channels and input digit.
- 4 **Pr/C/S(Program/Broadcast Channel/Cable Channel)**  
Use this button to select TV input source.
- 5 **EXTERNAL SOURCE INPUT SELECTION**  
Use this button to display the available video sources.  
(TV, Video1-2, S-Video, DTV/DVD, PC, H Scart, F Scart)
- 6 **PIP FUNCTIONS (→ P. 37)**  
- PIP : Use this button for PIP On/Off.  
- SIZE : Use this button to select Size.  
- POSITION : Use this button to select Position.  
- P.MODE : Use this button to select Picture Mode.  
- SWAP : Use this button to swap between main picture and sub-picture.  
- INPUT : Use this button to select the Input Source.
- 7 **INFOMATION (→ P. 67)**  
Use this button to display resolution or various program information.
- 8 **SLEEP (→ P. 75)**  
Use this button to allow your TV to turn off automatically at designated time.
- 9 **CHANNEL SELECTION**  
- Use these buttons to select channels. You can also use these buttons when changing pages in TTX mode.  
- Use these buttons to move each item of menu you want to choose.  
- Use these buttons to jump back to TV mode from other mode.
- 10 **OK**  
- Use this button to select each item of menu.  
- Use this button to display clock.
- 11 **PREVIEW**  
Use this button to return to the previous channel.
- 12 **STILL (→ P. 60)**  
Use this button to freeze a picture.
- 13 **ASPECT RATIO (→ P. 59)**  
Use this button to change the picture size.
- 14 **MENU**  
Use this button to bring up the OSD on the screen and jump back to the previous menu.
- 15 **SELECT/ADJUST**  
- Use this button to select or adjust each item of menu.  
- Use this button to quickly adjust volume.
- 16 **FAVORITE (→ P. 65)**  
Use this button to select the favorite channel.

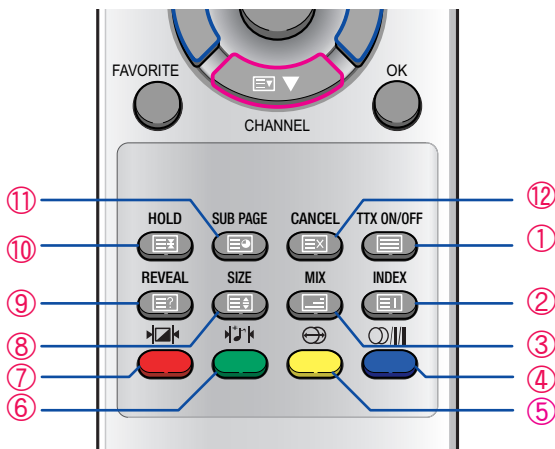


# HYUNDAI LCD TV HQL260WR/320WR

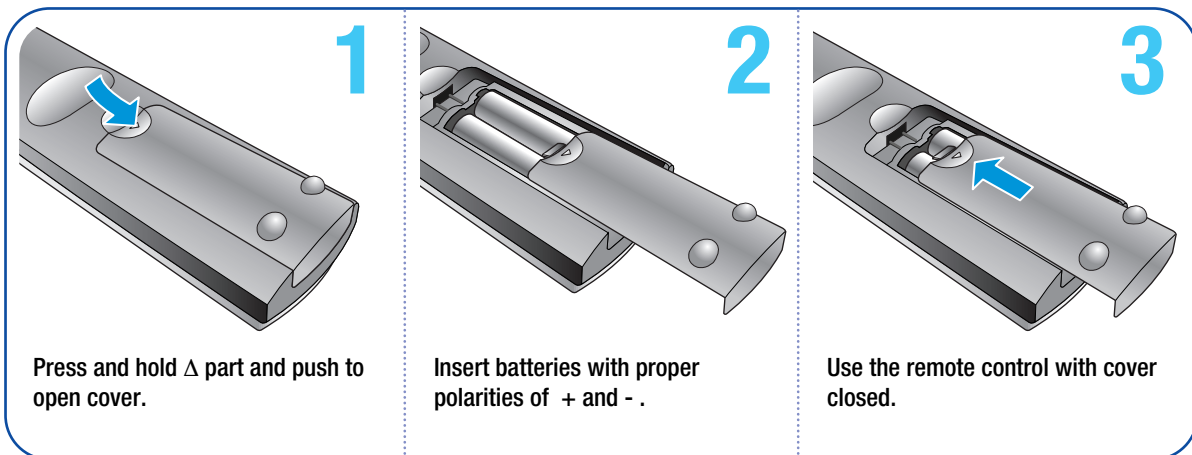
- 17 **PICTURE MODE** (→ P. 35)  
Use this button to select Picture Mode.
- 18 **SOUND MODE** (→ P. 43)  
Use this button to select Sound Mode.
- 19 **SRS WOW** (→ P. 46)  
Use this button to select SRS WOW.
- 20 **SOUND** (→ P. 47)  
Use this button to display types of audio signals currently aired on TV. Or you can use this button to switch to other Sound Mode available.

## Teletext & Fastext Function — (→ P. 55 ~ 57)

- ① **TTX ON/OFF**  
Use this button to activate the teletext mode.
- ② **INDEX**  
To move to INDEX in FLOF or move to INFO in TOP.
- ③ **MIX**  
To select TTX or MIX mode.
- ④ **BLUE**  
To move between BLOCK and BLOCK.
- ⑤ **YELLOW**  
To move to NEXT GROUP PAGE.
- ⑥ **GREEN**  
To move to NEXT EXISTING PAGE.
- ⑦ **RED**  
To return to the previous selection
- ⑧ **SIZE**  
The size is changed from Normal, Double to Double Bottom mode in order.
- ⑨ **REVEAL**  
To reveal the hidden TTX information.
- ⑩ **HOLD**  
To freeze the TV screen when in Multi Page.
- ⑪ **SUB PAGE**  
To move to Sub Page.
- ⑫ **CANCEL**  
To return to normal viewing



## How to Insert Batteries in Remote Control



\*Battery type : 1.5V/BP-2KM(AAA/LR03G)



GENERAL INFORMATION



HYUNDAI WIDE LCD TV

# Connections



- Connecting Indoor/Outdoor TV Antenna (UHF/VHF) ..... 23
- Connecting to the antenna input connection  
on the external equipment ..... 24
- Before connecting the video/audio connections to  
external devices ..... 25
- Connecting VCR, Cable/Satellite Receiver ..... 26
- Connecting a DTV Receiver or DVD player ..... 27
- Playing back a tape recorded on a camcorder ..... 28
- Connecting to a PC ..... 29
- Resolution Supported in PC ..... 30
- Scart Connection to the External Input/Output ..... 31
- Scart Pin Specifications ..... 32

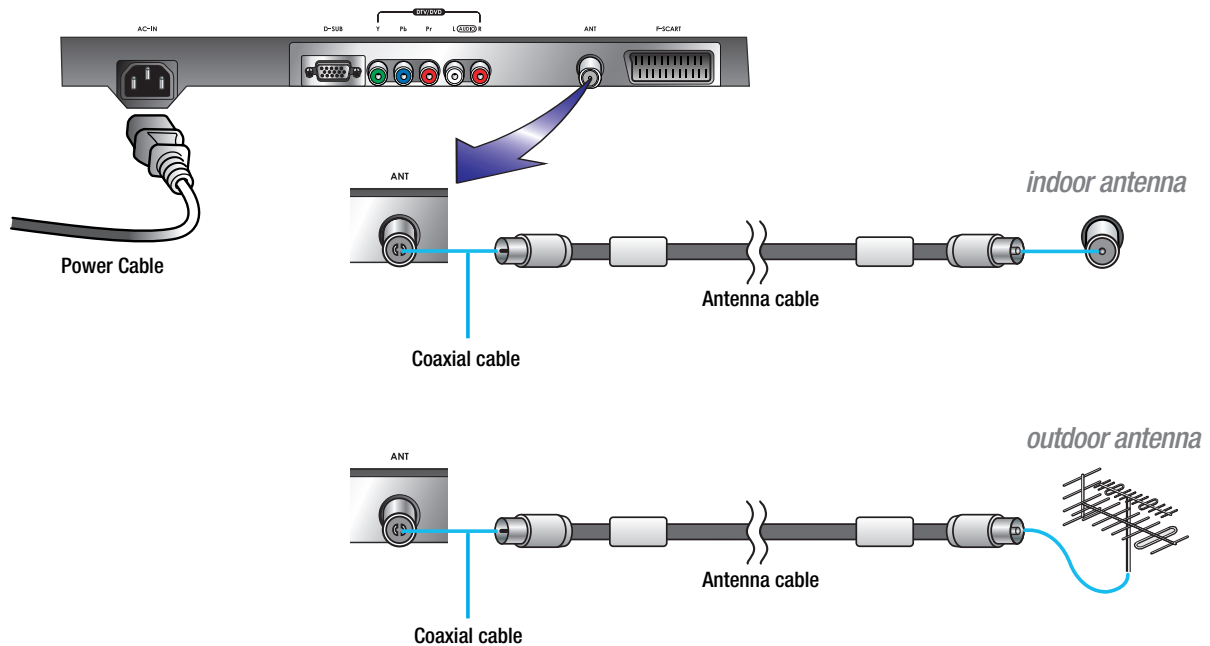


## Connecting Indoor/Outdoor TV Antenna(UHF/VHF)



### Connection Method

Ensure to connect an antenna cable to the antenna input connection.


CONNECTIONS



### How to Watch

- 1 Turn on your LCD TV and press  or  on remote control unit to select TV.

You can select ⇄ TV ⇄ SCART1 ⇄ SCART2 ⇄ AV1 VIDEO ⇄ AV1 S-VHS ⇄ AV2 VIDEO ⇄ DTV ⇄ PC ⇄ in order.

- 2 Press  or numeric keys to select the desired channels.

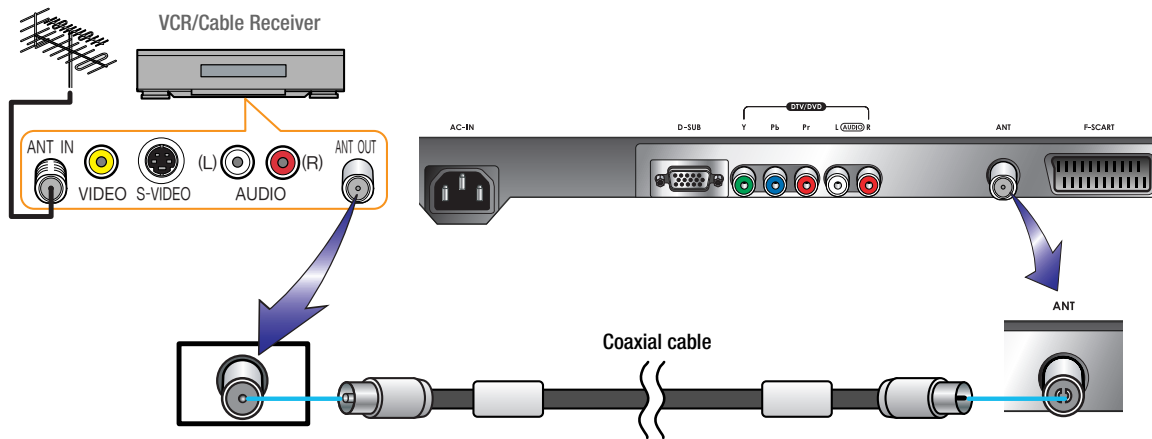
### TIP

- When inserting a 75-ohm coaxial cable into the input connection, ensure the wire tip not to bend.
- If you experience poor signal reception, we recommend you purchase a signal amplifier for better picture quality.

## Connecting to the Antenna Input Connection on the External Equipment

### Connection Method

- 1 Connect an antenna cable to VCR/Cable/Satellite Receiver with the antenna input.
- 2 Use a coaxial cable to connect VCR/Cable/Satellite Receiver's antenna output to the antenna input on your LCD TV.





## Before connecting the video connections to external devices .....

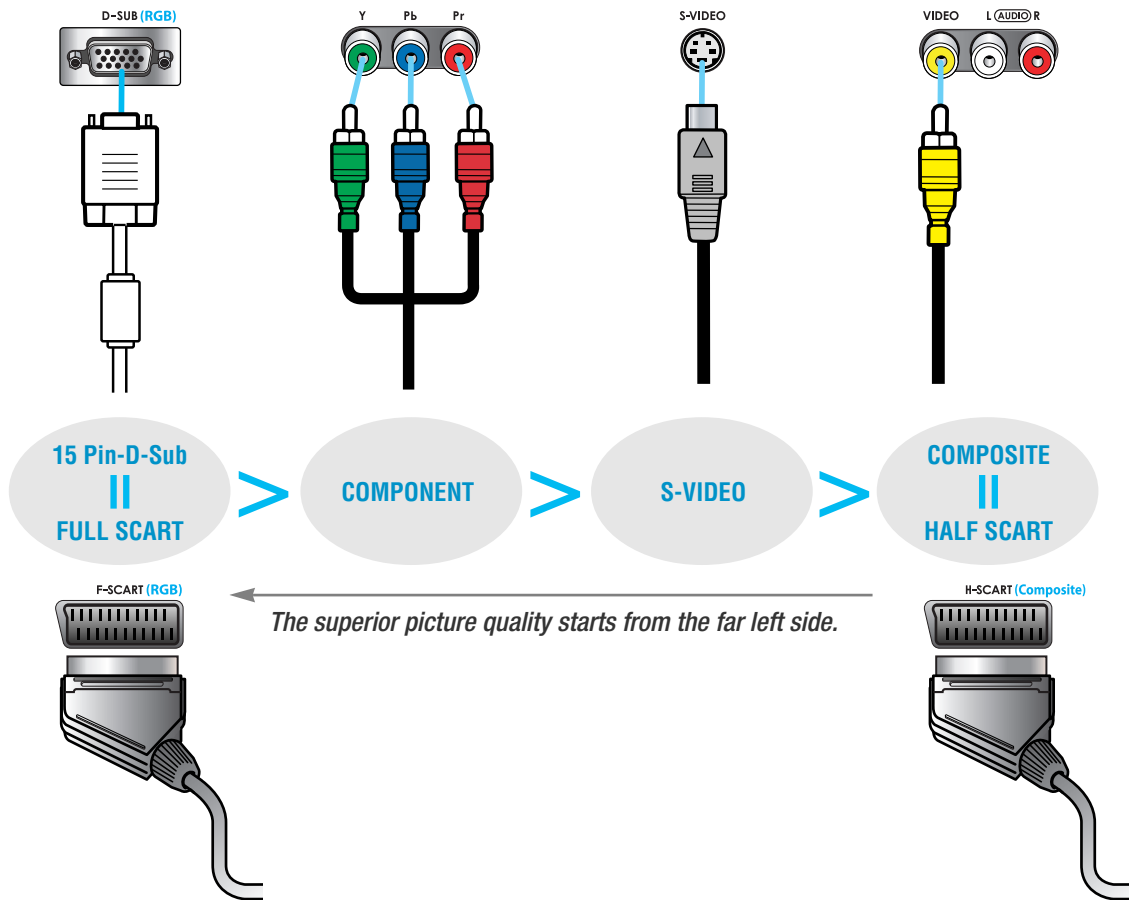
Please make sure to read the following information on connection to enjoy best picture quality.

### Video connectors

#### Types of video cable :

- ① 15-Pin D-SUB ② COMPONENT ③ S-VIDEO ④ COMPOSITE ⑤ FULL SCART ⑥ HALF SCART

Best picture quality is displayed in the following order.

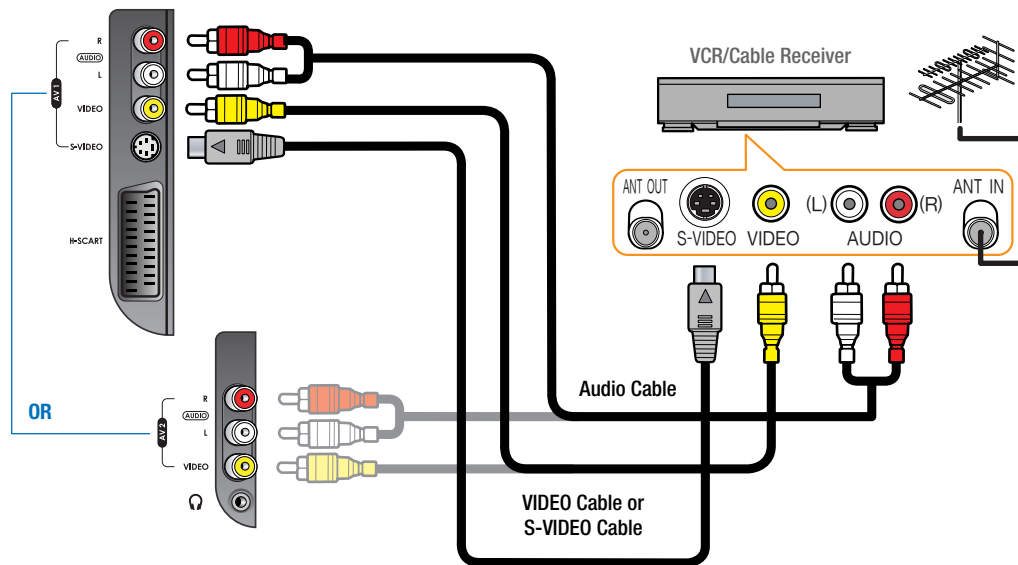


Full Scart supports Composite simultaneously

## Connecting a VCR, Cable/Satellite Receiver

### Connection Method

- 1 Connect Video/S-Video cable between Video/S-Video output terminal of VCR or Cable/Satellite receiver and Video/S-Video input terminal of LCD TV.  
(Connect cables and terminal in the same colors)
- 2 Connect Audio cable (left:white color, right:red color) between Audio output terminal of VCR or cable/satellite receiver and Audio input terminal of LCD TV.  
(Connect cables and terminal in the same colors)



### How to Watch

- 1 Turn on your LCD TV and press **VIDEO** on remote control unit to select **Video** or **S-Video**.  
You can select ⇄ AV2 VIDEO ⇄ AV1 S-VHS ⇄ AV1 VIDEO ⇄ SCART2 ⇄ SCART1 ⇄ TV in order.
- 2 **VCR play** : Turn on the VCR and insert a tape and play it.  
**Cable/Satellite receiver play** : Turn on the receiver and select a channel.  
Read a user manual of VCR, Cable/Satellite Receiver for more details.

**TIP**

Use S-video cables for better picture quality.

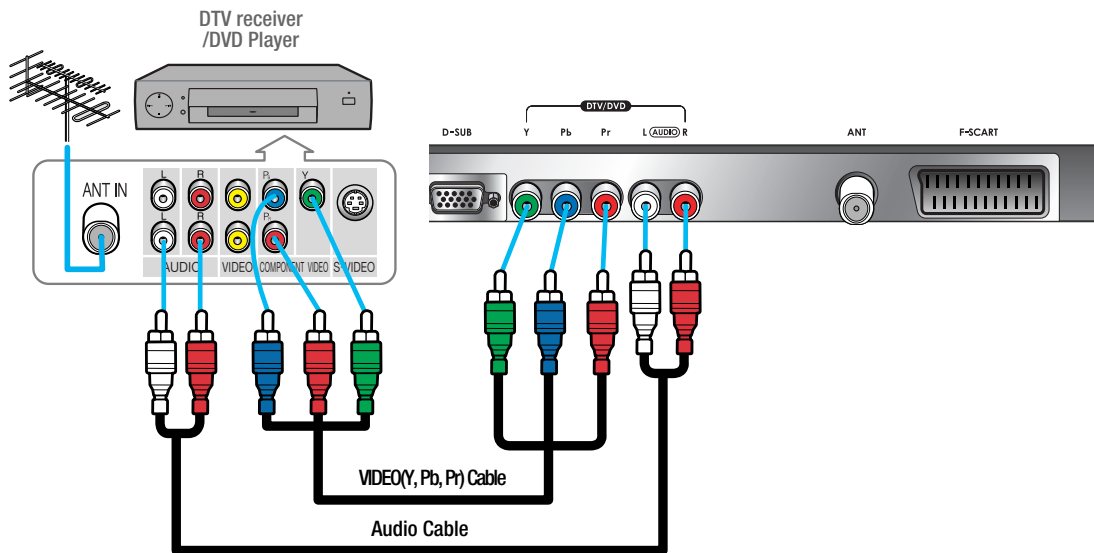


## Connecting a DTV Receiver or DVD Player


### Connection Method

#### CONNECTIONS

- 1 Connect video cables(Y, Pb, Pr) between output terminals(Y, Pb, Pr) of DTV receiver or DVD player and the input terminals(Y, Pb, Pr) of DTV/DVD(480i/480p/720p/1080i) on the rear of LCD TV.  
(Connect cables and terminal in the same colors)
- 2 Connect Audio cable between Audio output terminal of DTV receiver or DVD player and Audio input terminal for DTV/DVD Audio on the rear of LCD TV.  
(Connect cables and terminal in the same colors)



### How to Watch

- 1 Turn on your LCD TV and press  on remote control unit to select **DTV** or **DVD**.
- 2 Turn on a DVD player and use it.  
Read the user manual of DTV receiver or DVD player for more details.

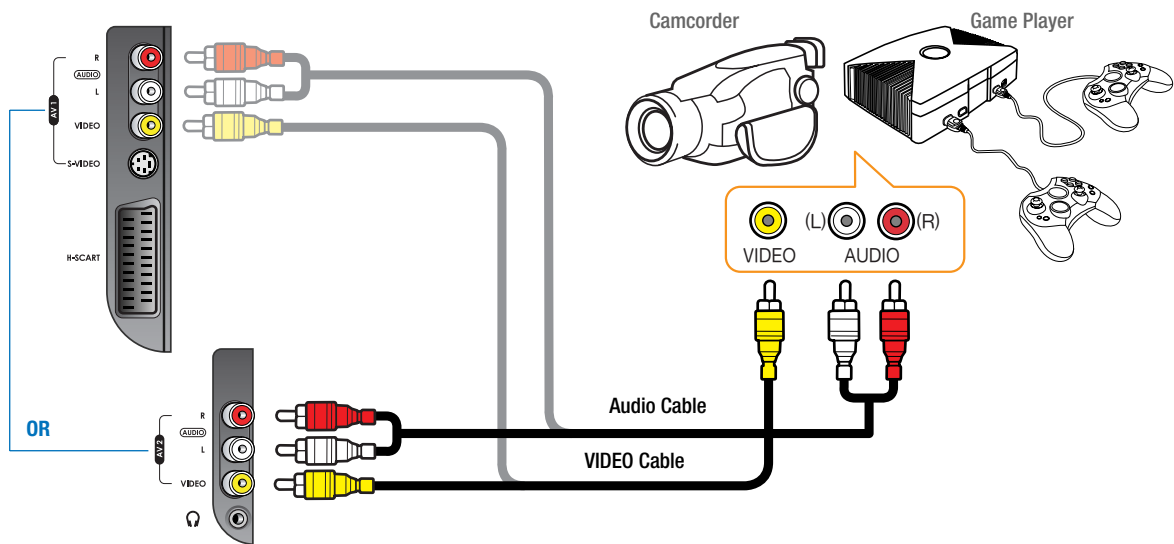
#### TIP

- Output terminal mark(Y, Pb, and Pr) of DVD player may be written as Y, B-Y, R-Y/Y-Cb-Cr / Y-Pb-Pr. (It depends on DVD player)
- To watch digital broadcast, you have to separately purchase a digital set-top box and connect it to LCD TV.

# Playing Back a Tape Recorded On a Camcorder

## Connection Method

- 1 Connect Video cable between Video output terminal of Camcorder/Game player and Video input terminal of LCD TV.  
(Connect cables and terminal in the same colors)
- 2 Connect Audio cable (left:white color, right:red color) between Audio output terminal of Camcorder/Game player and Audio input terminal of LCD TV.  
(Connect cables and terminal in the same colors)



## How to Watch

- 1 Turn on your LCD TV and press **VIDEO** on remote control unit to select **Video**.  
You can select ⇄ AV2 VIDEO ⇄ AV1 S-VHS ⇄ AV1 VIDEO ⇄ SCART2 ⇄ SCART1 ⇄ TV in order.
- 2 Turn on a Game player or Camcorder and use it.  
Read the user manual of Game player or Camcorder for more details.

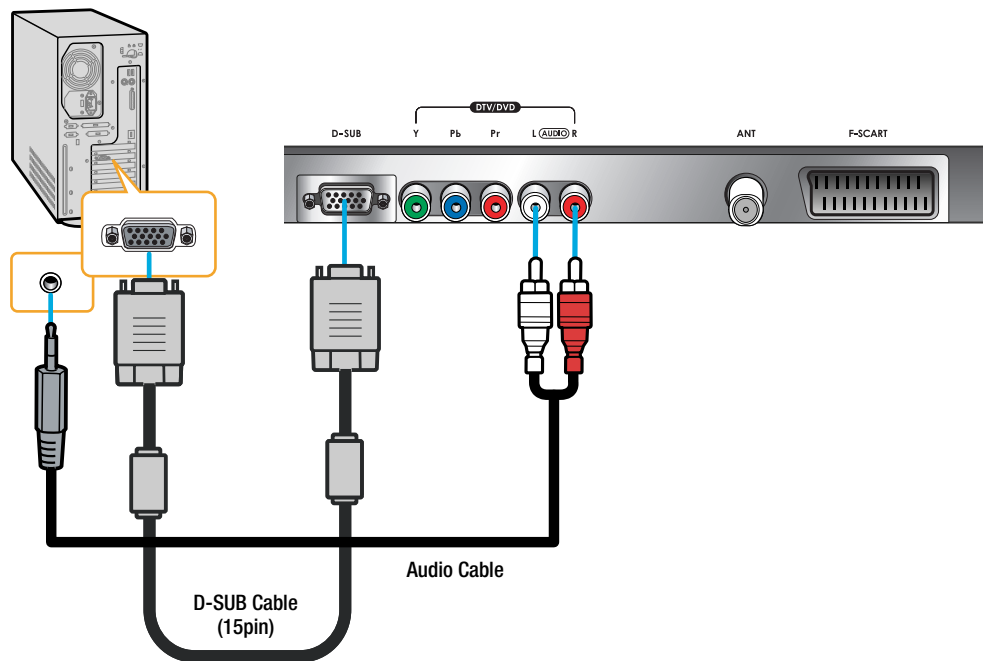


## Connecting to a PC


### Connection Method

#### CONNECTIONS

- 1 Connect PC signal cable(15 pins D-SUB) between output terminal of PC and the D-SUB input terminal of a LCD TV.
- 2 Connect Audio cable between Audio output terminal of PC and Audio input terminal for PC of LCD TV. (Connect cables and terminal in the same colors)



### When Using as a PC Monitor

- 1 Turn on your LCD TV and press  on remote control unit to select PC.
- 2 Turn on the PC and use it. (Refer to next page on the back for the supported resolutions for PC)

#### TIP

- This product supports plug-and-play function.
- We recommend the above method if the satellite receiver supports DTV signal with D-SUB(15 pin) cable for the better quality picture.
- The audio port of the PC and the DTV/DVD uses with commonness.



## HYUNDAI LCD TV HQL260WR/320WR

**Resolutions Supported in PC**

Resolution	Horizontal frequency	Vertical frequency
640 x 350	31.47	70.09
640 x 480	31.47	59.94
	37.86	72.80
	37.50	75.00
720 x 400	31.47	70.08
800 x 600	37.88	60.32
	48.08	72.18
	46.88	75.00
1024 x 768	48.36	60.00
	56.48	70.07
	60.02	75.03

\* Recommended Resolution is 1024x768@60Hz

\* Max Resolution is 1024x768@75Hz

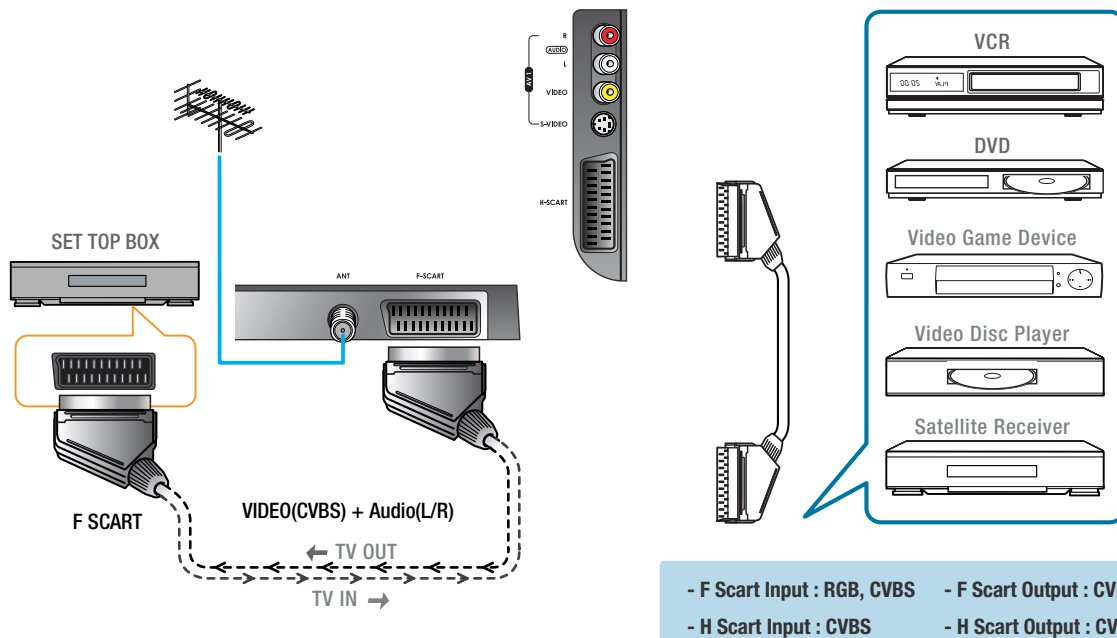


## Scart Connection to the External Input/Output


### Connection Method

- 1 This end can be fitted with : A Scart connector
- 2 If you have a second VCR and wish to copy a cassettes tape, connect the source VCR to "F Scart" and the target VCR to "H Scart" so that you can redirect the signal from "F Scart" to "H Scart".

"F Scart" sends the TV broadcast signal received through an antenna to a set-top box and it receives that broadcast signal that the set top box has descrambled, which allows you to view the TV broadcast in AV Mode.



### How to Watch

- 1 Turn on your LCD TV and press  on remote control unit.  
You can select ⇄ AV2 VIDEO ⇄ AV1 S-VHS ⇄ AV1 VIDEO ⇄ SCART2 ⇄ SCART1 ⇄ TV in order.
- 2 Read a user manual of VCR, DVD, Satellite Receiver and other etc. for more details.



When switching voltage comes into the Scart-Pin 8 during viewing a TV program, the current mode will be switched to Scart mode.

## HYUNDAI LCD TV HQL260WR/320WR

## Scart Pin Specifications

If you wish to connect other equipment via the scart connectors on your TV, contact your dealer or a qualified technician to wire the A/V cable as illustrated below.

### - SCART 1 (FULL SCART)

PIN	SIGNAL	PIN	SIGNAL
1	Audio Output R	12	-
2	Audio Input R	13	Red Input GND
3	Audio Output L	14	-
4	Audio Input GND	15	RGB Red Input
5	Blue Input GND	16	RGB Blinking Signal Input
6	Audio Input L	17	Video Output GND
7	RGB Blue Input	18	Video Input GND
8	Switching Voltage Input	19	Video Output (CVBS)
9	Green Input GND	20	Video Input (CVBS)
10	-	21	Scart Connector GND
11	RGB Green Input		

CONNECTIONS

### - SCART 2 (HALF SCART)

PIN	SIGNAL	PIN	SIGNAL
1	Audio Output R	17	Video Output GND
2	Audio Input R	18	Video Input GND
3	Audio Output L	19	Video Output (CVBS)
4	Audio Input GND	20	Video Input (CVBS)
6	Audio Input L	21	Scart Connector GND
8	Switching Voltage Input		



If RGB signals come into "SCART 1", Input Mode will change from "SCART 1" to "RGB".



CONNECTIONS

HYUNDAI WIDE LCD TV

# Picture Setup



- How to Select the Picture Mode ..... 35
- How to Set the Desired Picture ..... 36
- How to Set PIP [Mode] ..... 37
- Supported PIP Table ..... 38
- How to Set the Geometry(In PC mode) ..... 39
- How to Set the Geometry(In DTV mode) ..... 40

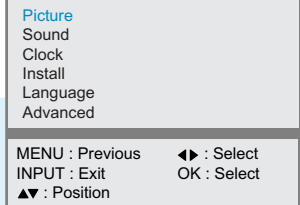


## How to Select the Picture Mode

Users can adjust picture mode automatically according to the input mode(TV, Video1-2, S-Video, F/H Scart, DVD/DTV).



Press **Menu** button.  
Menu items appear on the screen.



1

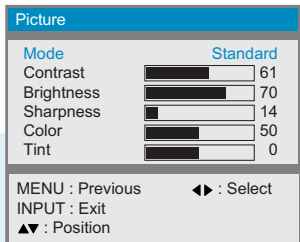


Press **Left, Right or OK** button to select "Picture".

2



Press **Up and Down** buttons to move to "Mode".



3



Press **Left and Right** buttons, then the menu changes in order below.  
⇒ Standard ⇒ Sport ⇒ Natural ⇒ Mild ⇒ Custom ⇒



Press **MENU** button after the setting is done, and Menu goes to the **previous** menu.  
If the **INPUT** button is pressed, the menu disappears.

**STANDARD** : For general contents. It fits most video contents.

**SPORT** : For a clear display or watch sports.

**NATURAL** : For movies or live music.

**MILD** : For a soft display.

**CUSTOM** : When the user wants to set the values → [see the next page](#)

**How To Directly Select Picture Mode** : Press  button.

- Users can select Standard ⇒ Sport ⇒ Natural ⇒ Mild ⇒ Custom, when the input mode is TV, Video1/2, S-Video, F/H Scart, DVD or DTV.

**TIP**

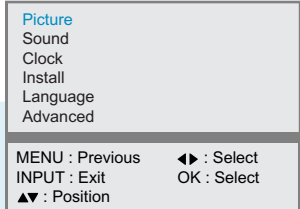
In the user's mode, the users can adjust at their preference Contrast, Brightness, Sharpness, Color, Tint(Hue) in Standard, Sport, Natural, or Mild mode.

## How to Set the Desired Picture

Users can manually adjust the picture in their own ways.



Press **Menu** button.  
Menu items appear on the screen.



1

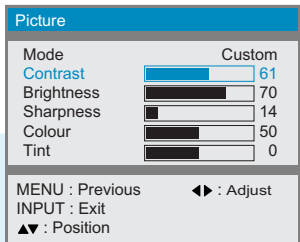


Press **Left, Right or OK** button to select  
"Picture".

2



Press **Up and Down** buttons to Choose  
one of the items listed.



3



Press **Left and Right** buttons to adjust.



Press **MENU** button after the setting is done, and Menu goes to the **previous menu**.  
If the **INPUT** button is pressed, the menu disappears.

**CONTRAST** : Adjust the brightness and darkness of object and background.

**BRIGHTNESS** : Adjust the brightness of the entire picture.

**SHARPNESS** : Adjust clarity of outline of objects. ➔ This is not applied to DTV, PC mode.

**COLOR** : Adjust colors into deeper or lighter colors.

**TINT(HUE)** : Adjust colors naturally. ➔ This is not applied to PC, TV mode.

**TIP**

If you adjust the Picture in step 3 while it is in Standard, Sports, Natural or Mild mode, the mode will change to Custom mode.

\*Adjustments menu may be different according to the input source.



## How to Set PIP [Mode]

- You can watch another device's image in the PIP while watching the TV, S-Video, DTV, Scart1/2 or VIDEO in the main image.
- This function is available only with the remote control.



**Press the PIP button.**  
You will see the PIP at the upper right corner.

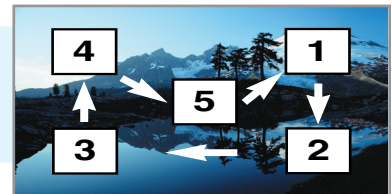


**Press the INPUT button, then input source changes in order below.**  
 ⇨ TV ⇨ SCART1(F) ⇨ SCART2(H) ⇨ AV1 VIDEO  
 ⇨ AV1 S-VHS ⇨ AV2 VIDEO ⇨ DTV ⇨ PC

*In case of TV mode, you can change the main or PIP TV channel by pressing the Up and Down buttons.*



**Press the Position button, then position changes in order below.**  
 ⇨ Right Up ⇨ Right Down ⇨ Left Down  
 ⇨ Left Up ⇨ Center ⇨



**Press the SIZE button.**  
The PIP will change among 6 different sizes whenever you press this button.



**Press the P.MODE button, then PIP picture mode changes in order below.**  
 ⇨ Standard ⇨ Sport ⇨ Natural ⇨ Mild ⇨ Custom ⇨



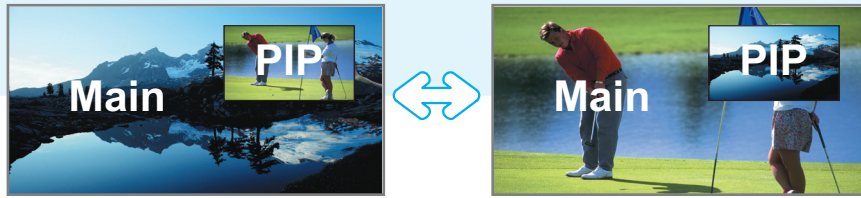
- Main and sub pictures cannot have the same input source.
- While PIP is on, any change to Picture or Geometry in the OSD control menu is applied only for the PIP function. If you wish to make adjustment to Picture or Geometry in the main image, please make sure the PIP function is off.



## HYUNDAI LCD TV HQL260WR/320WR



**Press the SWAP button.**  
The Main image and PIP image will switch with each other whenever you press this button.



PICTURE SETUP

## Supported PIP Table

PIP : 0 → Supported, X → Not Supported

Sub Main	PC	DTV	TV	S-Video	AV1 Video	AV2 Video	Scart1(F)	Scart2(H)
PC	X	X	0	0	0	0	0	0
DTV	X	X	0	0	0	0	0	0
TV	0	0	X	0	0	0	0	0
S-Video	0	0	0	X	0	0	0	0
AV1 Video	0	0	0	0	X	0	0	0
AV2 Video	0	0	0	0	0	X	0	0
Scart1(F)	0	0	0	0	0	0	X	0
Scart2(H)	0	0	0	0	0	0	0	X

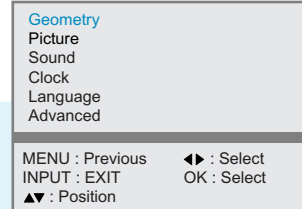


## How to Set the Geometry (In PC mode)

This function allows you to tune your screen in PC Input Mode.



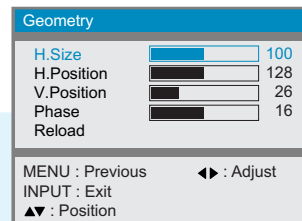
Press **Menu** button.  
Menu items appear on the screen.


**1**


Press **Up and Down** buttons to move to  
"Geometry".

**2**


Press **Left, Right or OK** button to move to select  
"Geometry".  
Geometry menu appears.


**3**


Press **Up and Down** buttons to Choose  
one of the items listed.

**4**


Press **Left and Right** buttons to adjust.

INPUT





Press **MENU** button after the setting is done, and Menu goes to the **previous menu**.  
If the **INPUT** button is pressed, the menu **disappears**.


**H. SIZE** : To adjust the horizontal size of the picture.  
**H. POSITION** : To adjust the horizontal position of the picture.  
**V. POSITION** : To adjust the vertical position of the picture.  
**PHASE** : To adjust to eliminate the shake of picture.  
**RELOAD** : To set the Geometry to the default.


## How to Set the Geometry (In DTV mode)


This function allows you to tune your screen in DTV Input Mode.


**1**  **Press Menu button.**  
Menu items appear on the screen.

**2**  **Press Up and Down buttons to move to "Geometry".**

**3**  **Press Left, Right or OK button to move to select "Geometry".**  
Geometry menu appears.

**4**  **Press Up and Down buttons to Choose one of the items listed.**

**5**  **Press Left and Right buttons to adjust.**

**INPUT**  **Press MENU button after the setting is done, and Menu goes to the previous menu.**  
If the INPUT button is pressed, the menu disappears.

Geometry

- Picture
- Sound
- Clock
- Language
- Advanced

MENU : Previous    ◀▶ : Select  
INPUT : EXIT        OK : Select  
▲▼ : Position

Geometry

- H.Size
- H.Position
- V.Position
- Reload

MENU : Previous    ◀▶ : Adjust  
INPUT : Exit  
▲▼ : Position

**H. SIZE** : To adjust the horizontal size of the picture.  
**H. POSITION** : To adjust the horizontal position of the picture.  
**V. POSITION** : To adjust the vertical position of the picture.  
**RELOAD** : To set the Geometry to the default.



PICTURE SETUP

HYUNDAI WIDE LCD TV

# Sound Setup



- How to Select the Audio Mode ..... 43
- How to Set the Desired Audio ..... 44
- How to Set the Balance, Volume and Source ..... 45
- How to Select SRS WOW(Surround) ..... 46
- How to Listen to Stereo Sound/Dual Sound ..... 47

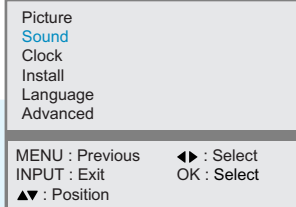


## How to Select the Audio Mode

- Users can adjust sound mode automatically as users want.
- In SRS On mode, Equalizer in Sound Menu is not activated.



Press **Menu** button.  
Menu items appear on the screen.



1

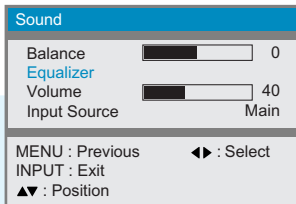


Press **Up and Down** buttons to move to "Sound".

2



Press **Left, Right or OK** button to select "Sound".



3

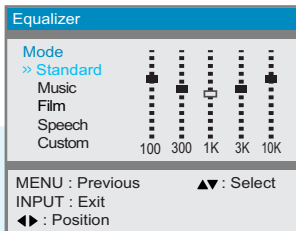


Press **Up and Down** buttons to move to "Equalizer".

4



Press **Left, Right or OK** button to select "Equalizer".



5



Press **Up and Down** buttons, then the mode changes in order below.

⇒ Standard ⇒ Music ⇒ Film ⇒ Speech ⇒ Custom ⇒

INPUT



Press **MENU** button after the setting is done, and Menu goes to the **previous menu**.  
If the **INPUT** button is pressed, the menu disappears.

**STANDARD** : For the general sound. This fits most audio contents.

**MUSIC** : For enjoying original sound.

**FILM** : For grandiose sound.

**SPEECH** : For the clear sound.

**CUSTOM** : When the user wants to set the value → [see the next page](#)

**How To Directly Select Sound Mode** : Press button.

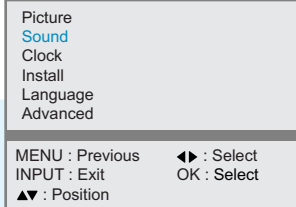
Users can select Standard ⇒ Music ⇒ Film ⇒ Speech ⇒ Custom in order.

## How to Set the Desired Audio

Users can manually adjust the sound in their own ways.



Press **Menu** button.  
Menu items appear on the screen.



1

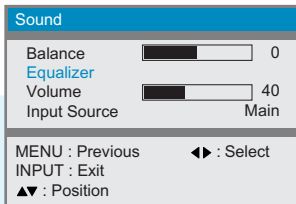


Press **Up and Down** buttons to move to  
“Sound”.

2



Press **Left, Right or OK** button to select  
“Sound”.



3

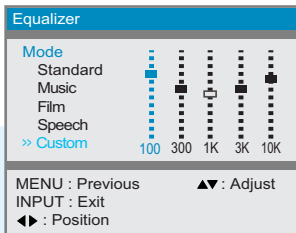


Press **Up and Down** buttons to move to  
“Equalizer”.

4



Press **Left, Right or OK** button to select  
“Equalizer”.



5



Press **Left and Right** buttons to  
choose one of the items listed.  
100 ⇄ 300 ⇄ 1K ⇄ 3K ⇄ 10K

6



Then Press **Up and Down** buttons to adjust.

INPUT



Press **MENU** button after the setting is done, and Menu goes to the **previous menu**.  
If the **INPUT** button is pressed, the menu disappears.

**TIP**

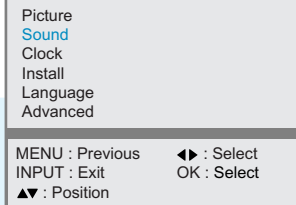
If you adjust the frequency (100Hz, 300Hz, 1KHz, 3KHz, 10KHz) in Standard, Music, Film or Speech mode, the mode will change to Custom mode.



## How to Set the Balance, Volume and Sound Source



Press **Menu** button.  
Menu items appear on the screen.



1

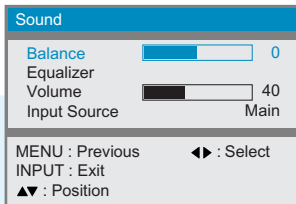


Press **Up and Down** buttons to move to **"Sound"**.

2



Press **Left, Right or OK** button to select **"Sound"**.



3

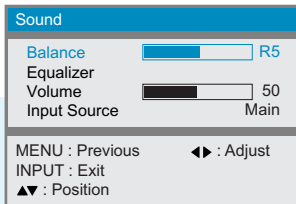


Press **Up and Down** buttons to move to **"Balance" or "Volume"**.

4



Then Press **Left and Right** buttons to adjust.

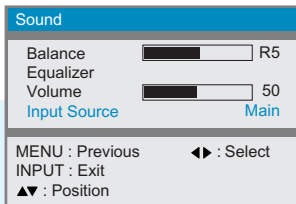


*If you need to select the sound source, go to step 5*

5



Press **Up and Down** buttons to move to **"Input Source"**.



6



Press **Left and Right** buttons, then input source changes to **"Main/Pip"**.

INPUT



Press **MENU** button after the setting is done, and Menu goes to the **previous menu**.  
If the **INPUT** button is pressed, the menu disappears.

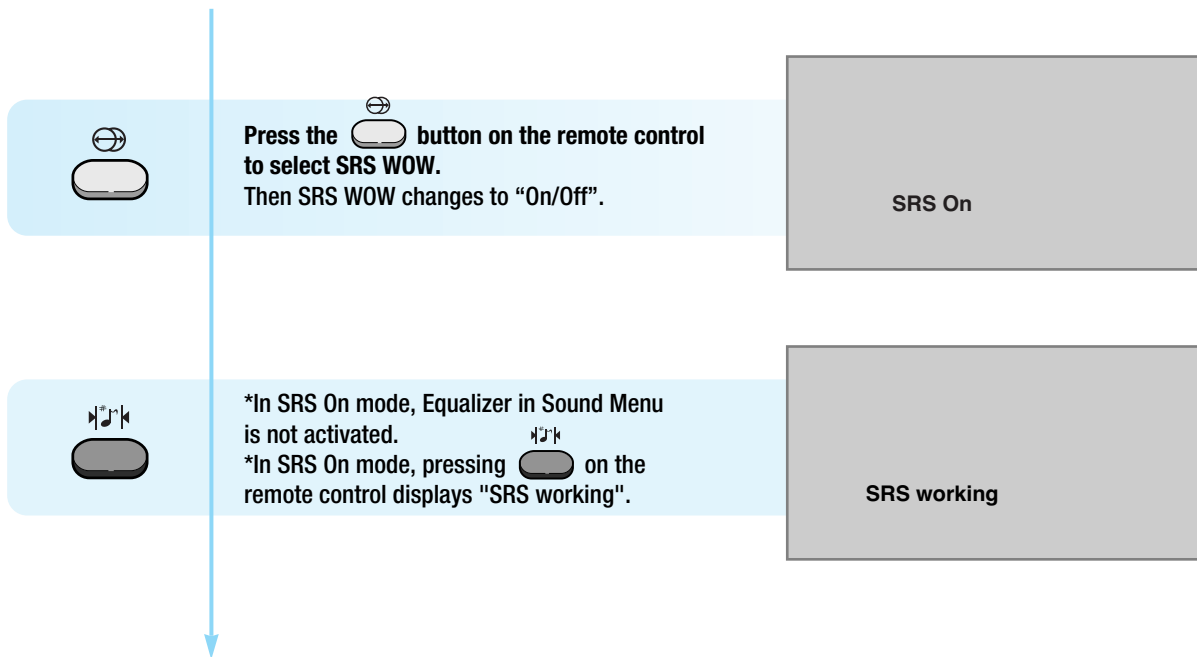
**TIP**

- You can listen to the main picture's sound when the PIP is off even if you select PIP mode sound.
- You will have sound only through the headphones, not the speakers, if you connect headphones. (mute) You can adjust the headphones' volume by pressing the ◀▶ button.
- When you would like to have sound through the headphones, if you connect a set of headphones to your TV, the volume level will be decreased automatically without concerning the previous volume setting.



## How to Select SRS WOW(Surround)

- You can enjoy the spectacular, clear and crisp sound.
- This function is available only with the remote control.



is a trademark of SRS Labs, Inc.

WOW technology is incorporated under license from SRS Labs, Inc.

Remarkable Enhancement for Mono or Stereo Playback

WOW™, is an award-winning, patented technology that significantly enhances the quality of mono and stereo audio material. It creates the perception of improved dynamics and bass performance over standard speakers or headphones.

WOW makes up for the limitations inherent in smaller speakers and headphones by providing a panoramic three-dimensional audio image that extends the sound in both the horizontal and vertical planes well beyond the speakers or headphones themselves. As a result, manufacturers of small audio devices, televisions, wireless and personal/portable products can dramatically improve their product's audio performance without enlarging the speaker size. The enriching effects of WOW are especially noticeable on digitally compressed mono or stereo audio in formats such as MP3, WMA and audio CD in which the "tinny" hollow sound is greatly reduced.





## How to Listen to Stereo Sound / Dual Sound

- Users can set sound mode as users want.
- This function is available only with the remote control.

### - Listening to stereo sound



Press the  button on the remote control to select Mono or Stereo. Mono or Stereo be will selected in turn whenever you press the button.  
 (\*During FM MONO broadcast, pressing the  button will display the current status.)

### - Listening to the Dual sound



Press the  button on the remote control to select Dual sound.

**Dual 1** : Your national language.

**Dual 2** : Foreign language

(\*Dual 1 or Dual 2 be will selected in turn whenever you press the button.)

## HYUNDAI LCD TV HQL260WR/320WR

This S. Mode displays the current Audio signal status, and controls the processing of Audio signal. When power is switched on, the mode is automatically preset to either “Dual-I” or “Stereo”, depending on the current signal transmission condition.

	Type of Broadcast	On-Screen Indication
NICAM Stereo	Regular Broadcast (Standard audio)	Mono (Normal use)
	Regular+ NICAM Mono	NICAM Mono ↔ Mono
	NICAM Stereo	NICAM Stereo ↔ Mono
	NICAM Dual-I/II	NICAM Dual 1 ↔ NICAM Dual 2 ↔ NICAM Dual 1/2 ↔ Mono ↔
A2 Stereo	Regular broadcast (Standard audio)	Mono (Normal use)
	Bilingual or Dual-I/II	Dual 1 ↔ Dual 2 ↔ Dual 1/2
	Stereo	Stereo ↔ Mono



- If the signal reception conditions deteriorate, setting to Mono will make your listening condition better.
- If the stereo signal is weak and automatic mode switching occurs, then the current mode is switched to the Mono.



SOUND SETUP

HYUNDAI WIDE LCD TV

## Channel Setup



How to Store Program Automatically .....	51
How to Edit Program Manually .....	52
Teletext Feature .....	55
Displaying the Teletext Information .....	56

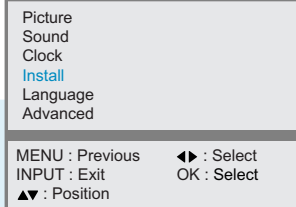


## How to Store Program Automatically

You can scan channels available to you and their availability depends on your country. Automatically allocated programme numbers may not correspond to actual or desired programme numbers. However, you can sort the numbers manually and clear any channels you do not wish to watch. (Ensure to do this during TV broadcast available.)



Press Menu button.  
Menu items appear on the screen.



1

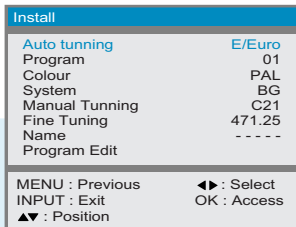


Press Up and Down buttons to move to "Install".

2



Press Left, Right or OK buttons to select "Install".



3



Press Up and Down buttons to move to "Auto Tuning".

4



Press Left and Right buttons to select your country.  
You can select the countries in order below.  
⇒ BE ⇒ DE ⇒ ES ⇒ FR ⇒ IT ⇒ NL  
⇒ SE ⇒ CH ⇒ UK ⇒ E/EURO ⇒ Others

5



Press OK buttons, then it will be stored the searched channels.

When the Auto tuning is finished, menus on the screen will be changed to the Program edit screen automatically.

*Press the Menu button and then go to step 6 if you need to Program edit manually.*



If you press the MENU button in the middle of Auto tuning, the first stored channel will be displayed, and the Auto tuning stops.

\* BE(Belgium), DE(Germany), ES(Spain), FR(France), IT(Italy), NL(Netherlands), SE(Sweden / Singapore), CH(Switzerland), UK (United Kingdom), E/EURO(East Europe), Other (Others countries)

## How to Edit Program Manually

You can store the TV channels, including those received via cable networks when storing channels.

6



Press Up and Down buttons to move to "Program".

Install	
Auto tuning	E/Euro
Program	01
Colour	PAL
System	BG
Manual Tunning	C21
Fine Tuning	471.25
Name	-----
Program Edit	
MENU : Previous ◀▶ : Adjust	
INPUT : Exit	
▲▼ : Position	

7



Press Left and Right buttons to select to program.

*Press the Down button and then go to step 8 if you need to set colour system.*

Install	
Auto tuning	E/Euro
Program	12
Colour	PAL
System	BG
Manual Tunning	C21
Fine Tuning	471.25
Name	-----
Program Edit	
MENU : Previous ◀▶ : Select	
INPUT : Exit	
▲▼ : Position	

8



Press Left and Right buttons, then colour system changes in order below.  
 ⇨ PAL ⇨ SECAM ⇨ NTSC ⇨ AUTO ⇨

*Press the Down button and then go to step 9 if you need to set sound system.*

Install	
Auto tuning	E/Euro
Program	12
Colour	PAL
System	BG
Manual Tunning	C21
Fine Tuning	471.25
Name	-----
Program Edit	
MENU : Previous ◀▶ : Select	
INPUT : Exit	
▲▼ : Position	

9



Press Left and Right buttons, then sound system changes in order below.  
 ⇨ I ⇨ L ⇨ L' ⇨ M ⇨ BG ⇨ DK ⇨

*Press the Down button and then go to step 10 if you need to set manual tuning.*

Install	
Auto tuning	E/Euro
Program	12
Colour	PAL
System	DK
Manual Tunning	C21
Fine Tuning	471.25
Name	-----
Program Edit	
MENU : Previous ◀▶ : Select	
INPUT : Exit	
▲▼ : Position	
0~9 : Adjust	

10



Press Left and Right buttons to set to Manual Tuning. You can directly set channel by pressing Pr/C/S and numeric(0~9) button.

**\*The MANUAL Search function will operate in the button direction you pressed when you press the ◀▶ button for more than 2 seconds.**

*Press the Down button and then go to step 11 if you need to set to Fine Tuning.*

*Continued on next page .....*

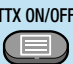


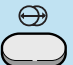





## HYUNDAI LCD TV HQL260WR/320WR

..... Continued from previous page. (Set to Program Edit.)

Program Edit					
Pr	Ch.	Freq	Name	Lock	Skip
---	---	-----	-----	<input type="checkbox"/>	<input type="checkbox"/>
---	---	-----	-----	<input type="checkbox"/>	<input type="checkbox"/>
---	---	-----	-----	<input type="checkbox"/>	<input type="checkbox"/>
---	---	-----	-----	<input type="checkbox"/>	<input type="checkbox"/>
---	---	-----	-----	<input type="checkbox"/>	<input type="checkbox"/>
---	---	-----	-----	<input type="checkbox"/>	<input type="checkbox"/>
---	---	-----	-----	<input type="checkbox"/>	<input type="checkbox"/>

BUTTON	DISPLAY(ACTION)
 <b>Delete</b>	After moving to an unwanted channel by using (▲▼) button or numeric key pad, you can clear the channel by pressing this button.
 <b>MOVE</b>	If you want to change the order of programs, move to the channel you will edit, by using (▲▼) button or numeric key pad. Then press this button to display ">>". You can move up and down by using (▲▼) button or numeric key pad. And then if this button is pressed a second time, your setting is completed and the ">>" disappears.
 <b>SWAP</b>	If you want to swap one channel with another channel, move to the appropriate channel by using (▲▼) button or numeric key pad. Then press this button to display ">>". You can move to the destination channel by using (▲▼) button or numeric key pad. And then if this button is pressed a second time, the first channel will be swapped with the second channel.
 <b>LOCK</b>	You can move to a channel you want by using (▲▼) button or numeric key pad. You can set Channel Lock by pressing this button.
 <b>SKIP</b>	You can move to an unwanted channel by using (▲▼) button or numeric key pad. You can set Channel Skip by pressing this button.



## Teletext Feature

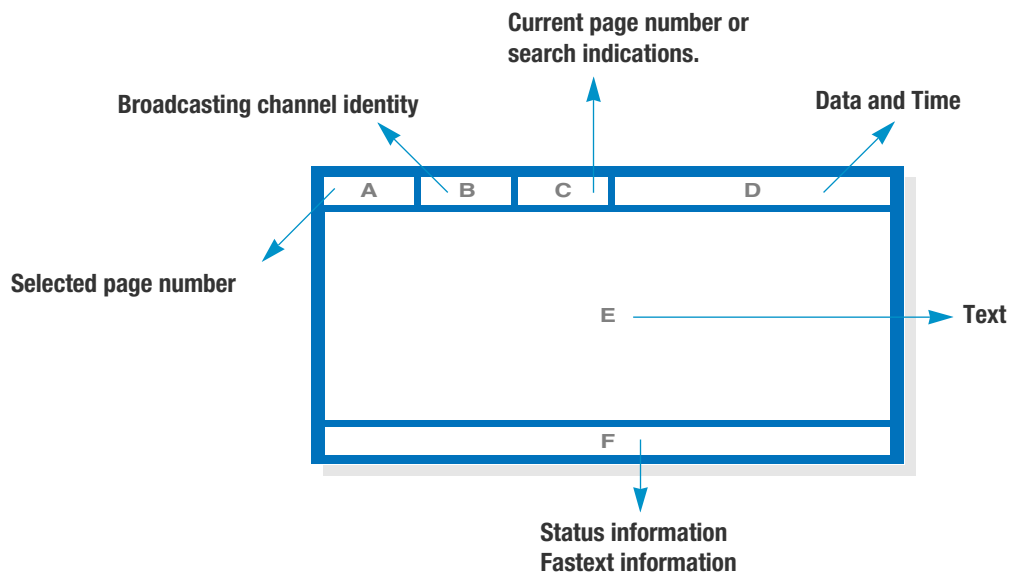
Most TV channels provide written information services via teletext. Information provided includes with the next entry it is same :

- TV programme times
- News bulletins and weather forecasts
- Sports results
- Travel information

Teletext information is often divided between several pages displayed in sequence, which can be accessed by :

- Entering the number
- Selecting a title in a list
- Selecting a coloured heading (FASTTEXT SYSTEM)
- Travel information

## Teletext OSD(On-Screen-Display) Picture

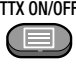

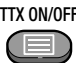


## Displaying the Teletext Information

You can display Teletext information at any time on your TV.

For Teletext information to be display correctly channel reception to be stable otherwise






- Information maybe missing or some pages may not be displayed.

- 1**  Press **TTX ON/OFF** button to activate the TTX mode.  
(The contents of page 252 are displayed.)
- 2**  If you wish to display the actual broadcast at the same time as the teletext page, **press MIX button.**  
- If the button is pressed a second time, the function will be deactivated.
- 3**  Press **TTX ON/OFF** button again to exit from the teletext display.






## Selecting Display Options

When you have displayed a teletext page, you can have various options to suit you requirements.

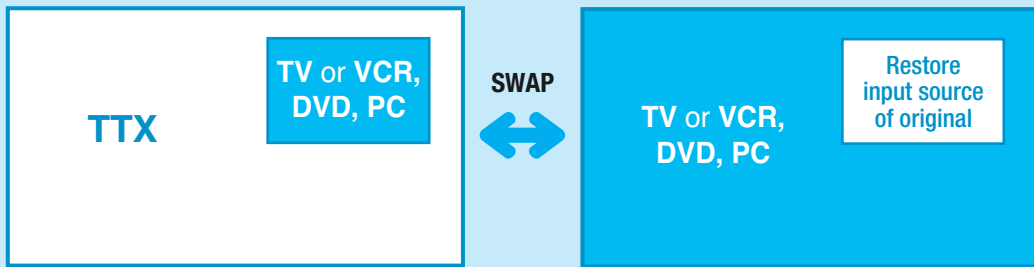
BUTTON	DISPLAY(ACTION)
 <b>HOLD</b>	<p>When the secondary pages are displayed in sequence, press the <b>HOLD</b> button. To freeze the current display page, press the <b>HOLD</b> button again to resume.</p>
 <b>SUB PAGE</b>	<p>Displays a secondary page by entering its number.</p>
 <b>CANCEL</b>	<p>To return to normal viewing press the <b>CANCEL</b> button. "???" (specific characters) is displayed at the upper left until the new screen is selected.</p>
 <b>REVEAL</b>	<p>Displays concealed text such as answer to quiz games. To return to normal viewing, press this button again.</p>
 <b>SIZE</b>	<p>Whenever you press this button, the letter size of the page will be changed. <b>Once press</b> : The letter of the top half page enlarge to double size. <b>Twice press</b> : The letter of the bottom half page enlarge to double size. <b>Three times press</b> : Return to the normal viewing</p>



BUTTON	DISPLAY(ACTION)
 <b>INDEX</b>	To display the index page, press the <b>INDEX</b> button.
 <b>PAGE UP</b>  <b>PAGE DOWN</b>	Displays the next page. Displays the previous page.



You can activate PIP while viewing TTX information.



The TTX function is not available in the PIP image when the PIP is on. The original screen will be restored when the SWAP is active.

➔ For details on PIP feature, please refer to the Picture Setup section on page 37~38.

HYUNDAI WIDE LCD TV

Function Setup



- How to Select the Aspect Ratio ..... 59
- How to Freeze Picture ..... 60
- How to Set Key-Lock ..... 61
- How to OSD(On-Screen-Display) Display Time ..... 62
- How to Set No key Operation Auto Power Off ..... 63
- How to Set No Signal Timeout ..... 64
- How to Set Your Favorite Channels ..... 65
- How to Set Noise Reduction and Use Factory Preset ..... 66
- Displaying Information and Clock ..... 67
- Choosing Your Language ..... 68



## How to Select the Aspect Ratio

- Users can adjust Aspect Ratio as users want.
- This function is available only with the remote control.

ASPECT

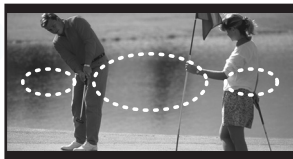


Press the ASPECT button, then Aspect Ratio changes in order below.

⇒ Auto ⇒ 16:9 ⇒ 15:9 ⇒ 4:3 ⇒ Zoom 1~5 ⇒ Panorama ⇒ (HQL260WR)  
 ⇒ Auto ⇒ 16:9 ⇒ 4:3 ⇒ Zoom 1~5 ⇒ Panorama ⇒ (HQL320WR)

**16:9**

General broadcast picture is adjusted to 16:9.



▲ HQL260WR



▲ HQL320WR

**16:9**

General broadcast picture is adjusted to 16:9.

**15:9**

The full screen of the image adjusted to 15:9.



▲ HQL260WR

**Panorama**

Picture size for panorama video.

**4:3**

General picture size.

**AUTO**

The size of the image is automatically stretched out by receiving WSS (Wide Screen Signal) data.

**Zoom1~5**

Zoom in 4:3 in horizontal and vertical direction. (This mode is recommended in letter box format.)

FUNCTION SETUP

ASPECT



- In case the PIP mode

When you are viewing the main and PIP images at the same time :  
 The PIP image will change only from 4:3 to 16:9.



4:3



16:9

## HYUNDAI LCD TV HQL260WR/320WR

**TIP**

OSD menu displays the current aspect ratio.

If you press the ASPECT button second time, aspect ratio will be changed according to Input mode as follows :

HQL260WR -

- **Under DTV or DVD inputs** : Users can select ⇨ 15:9 ⇨ 4:3 ⇨ Zoom1~5 ⇨ 16:9 ⇨ in order.
- **Under PC inputs** : Users can select ⇨ 15:9 ⇨ 4:3 ⇨ in order.
- **Under other inputs** : Users can select ⇨ Auto ⇨ 16:9 ⇨ 15:9 ⇨ 4:3 ⇨ Zoom 1~5 ⇨ Panorama ⇨ in order.

HQL320WR -

- **Under DTV or DVD inputs** : Users can select ⇨ 16:9 ⇨ 4:3 ⇨ Zoom1~5 ⇨ in order.
- **Under PC inputs** : Users can select ⇨ 16:9 ⇨ 4:3 ⇨ in order.
- **Under other inputs** : Users can select ⇨ Auto ⇨ 16:9 ⇨ 4:3 ⇨ Zoom 1~5 ⇨ Panorama ⇨ in order.

## How to Freeze Picture

The user can temporarily stop the playing picture.

STILL



**Press Still button.**

Playing picture is stopped.

*\* In PIP mode, the main picture stops.*

To deselect Still function.

**Press Still button once more.**



## How to Set Key-Lock

This is to lock the control buttons on the front top of LCD TV.



Press **Menu** button.  
Menu items appear on the screen.

Picture	
Sound	
Clock	
Install	
Language	
Advanced	
MENU : Previous      ◀▶ : Select	
INPUT : Exit          OK : Select	
▲▼ : Position	

1



Press **Up and Down** buttons to move to "Advanced".

2



Press **Left, Right or OK** button to select "Advanced".

Advanced	
Local Lock	Off
Osd Timeout	0
No Operation Timeout	0
No Signal Timeout	0
Favorite Channel	
NR	Off
Factory Preset	
MENU : Previous      ◀▶ : Select	
INPUT : Exit	
▲▼ : Position	

3



Press **Up and Down** buttons to move to "Local Lock".

4



Press **Left and Right** buttons, then the menu changes in order below.

⇒ Off ⇒ Once ⇒ Always ⇒

INPUT



Press **MENU** button after the setting is done, and Menu goes to the **previous** menu.  
If the **INPUT** button is pressed, the menu disappears.

FUNCTION SETUP

**OFF** : With the lock function off, you can control the TV with both the remote control and the buttons on the TV.  
**ONCE** : The lock function will turn off automatically after you turn the TV on/off once with the remote control.  
**ALWAYS** : With the lock function always on, you can control the TV only with the remote control, not with the buttons on the TV.

**TIP**

- This function prevents children from controlling the TV when parents are not home.
- It is available after setting this function with the remote control.
- \* How to Unlock Local-Lock : Press "-" and "Power" buttons simultaneously (Buttons on the front top of TV).



## How to Set OSD(On-Screen-Display) Display Time



Press **Menu** button.  
Menu items appear on the screen.

Picture	
Sound	
Clock	
Install	
Language	
Advanced	
MENU : Previous      ◀▶ : Select	
INPUT : Exit          OK : Select	
▲▼ : Position	

1



Press **Up and Down** buttons to move to  
"Advanced".

2



Press **Left, Right or OK** button to select  
"Advanced".

Advanced	
Local Lock	On
Osd Timeout	0
No Operation Timeout	0
No Signal Timeout	0
Favorite Channel	
NR	Off
Factory Preset	
MENU : Previous      ◀▶ : Adjust	
INPUT : Exit	
▲▼ : Position	

3



Press **Up and Down** buttons to move to  
"Osd Timeout".

4



Press **Left and Right** buttons to adjust the OSD display time.  
Whenever you press this button, you can adjust it in 5-second increments from 0 to 60 seconds.

INPUT



Press **MENU** button after the setting is done, and Menu goes to the **previous menu**.  
If the **INPUT** button is pressed, the menu disappears.

### TIP

- If you do not press the MENU button after adjusting the OSD timeout, the menu screen will disappear automatically after the set time.
- If you set 0, menu screen will not disappear automatically.



## How to Set No Key Operation Auto Power Off

Automatically turns the power off if there is no button pressed for a period of time after AUTO Wake-Up turns the power on.



Press **Menu** button.  
Menu items appear on the screen.

Picture
Sound
Clock
Install
Language
Advanced

MENU : Previous	◀▶ : Select
INPUT : Exit	OK : Select
▲▼ : Position	

1



Press **Up and Down** buttons to move to "Advanced".

2



Press **Left, Right or OK** button to select "Advanced".

Advanced	
Local Lock	Off
Osd Timeout	10
No Operation Timeout	0
No Signal Timeout	0
Favorite Channel	
NR	Off
Factory Preset	

MENU : Previous	◀▶ : Adjust
INPUT : Exit	
▲▼ : Position	

3



Press **Up and Down** buttons to move to "No Operation Timeout".

4



Press **Left and Right** buttons to adjust the auto power off time.  
You can adjust it in 30-minute increments from 0 to 180 minutes.

INPUT



Press **MENU** button after the setting is done, and Menu goes to the **previous menu**.  
If the **INPUT** button is pressed, the menu disappears.

TIP

If you set the time to 0, the TV will not use the auto power off function.

## How to Set No Signal Timeout

- Automatically turns the power off if there is no broadcast signal for the set time.
- This Function is available only to TV mode.



Press **Menu** button.  
Menu items appear on the screen.

Picture	
Sound	
Clock	
Install	
Language	
Advanced	

1



Press **Up** and **Down** buttons to move to  
"Advanced".

MENU : Previous	◀ : Select
INPUT : Exit	OK : Select
▲▼ : Position	

2



Press **Left**, **Right** or **OK** button to select  
"Advanced".

Advanced	
Local Lock	Off
Osd Timeout	10
No Operation Timeout	30
No Signal Timeout	0
Favorite Channel	
NR	Off
Factory Preset	

3



Press **Up** and **Down** buttons to move to  
"No Signal Timeout".

MENU : Previous	◀ : Adjust
INPUT : Exit	
▲▼ : Position	

4



Press **Left** and **Right** buttons to adjust  
the auto power off time.  
You can adjust it in 1-minute increments from 0 to 20 minutes.

INPUT



Press **MENU** button after the setting is done, and Menu goes to the **previous menu**.  
If the **INPUT** button is pressed, the menu disappears.

**TIP**

If you set the time to 0, the TV will not use the auto power off function.



## How to Set Your Favorite Channels

This is to store TV channels or input sources you most frequently use.



Press **Menu** button.  
Menu items appear on the screen.

Picture	
Sound	
Clock	
Install	
Language	
Advanced	
MENU : Previous      ◀▶ : Select	
INPUT : Exit          OK : Select	
▲▼ : Position	

1



Press **Up and Down** buttons to move to "Advanced".

2



Press **Left, Right or OK** button to select "Advanced".

Advanced	
Local Lock	Off
Osd Timeout	10
No Operation Timeout	30
No Signal Timeout	5
Favorite Channel	
NR	Off
Factory Preset	
MENU : Previous      ◀▶ : Select	
INPUT : Exit	
▲▼ : Position	

3



Press **Up and Down** buttons to move to "Favorite Channel".

4



Press **Left and Right** buttons to select "Favorite Channel".  
Favorite Channel menu appear.

Favorite Channel	
Pr01	
Pr12	
SCART1	
AV1 VIDEO	
----	
MENU : Previous      ◀▶ : Adjust	
INPUT : Exit          0~9 : Adjust	
▲▼ : Position        OK : Clear	

5



Press **Left and Right** buttons to set favorite channel or input source.

The channel or input source are changed in order below.

⇒ Pr00~99 ⇒ SCART1 ⇒ SCART2 ⇒ AV1 VIDEO ⇒ AV1 S-VHS ⇒ AV2 VIDEO ⇒ DTV ⇒ PC ⇒  
You can directly set channel or input source by pressing numeric(0~9), PC, DTV and Video button.

INPUT



Press **MENU** button after the setting is done, and Menu goes to the **previous menu**.  
If the **INPUT** button is pressed, the menu disappears.

FUNCTION SETUP

FAVORITE

**How To Directly Select Favorite Channel : Press  button.**

The selection will switch whenever you press the Favorite button on the remote control.

**TIP**

- You can delete the selection by pressing the OK button
- You can set up to 5 in turn.

## How to Set Noise Reduction and Use Factory Preset

Noise Reduction is to eliminate some noise on the screen and It is not applied to DTV and PC mode.



Press **Menu** button.  
Menu items appear on the screen.

Picture	
Sound	
Clock	
Install	
Language	
Advanced	

MENU : Previous      ◀▶ : Select  
INPUT : Exit          OK : Select  
▲▼ : Position

1



Press **Up and Down** buttons to move to  
"Advanced".

Advanced	
Local Lock	Off
Osd Timeout	10
No Operation Timeout	30
No Signal Timeout	5
Favorite Channel	
NR	On
Factory Preset	

MENU : Previous      ◀▶ : Select  
INPUT : Exit          OK : Select  
▲▼ : Position

2



Press **Left, Right or OK** button to select  
"Advanced".

3



Press **Up and Down** buttons to move to  
"NR".

4



Press **Left and Right** buttons to "On/Off".

*Go to step 5  
if you need to recall to the default.*

5



Press **Up and Down** buttons to move to  
"Factory Preset".

Advanced	
Local Lock	Off
Osd Timeout	10
No Operation Timeout	30
No Signal Timeout	5
Favorite Channel	
NR	On
Factory Preset	

MENU : Previous      OK : Access  
INPUT : Exit          ◀▶ : Select  
▲▼ : Position

6



Press the **OK** button.  
Then, It will recall to the default.  
(Except for Favorite Channel and Clock)

INPUT



Press **MENU** button after the setting is done, and Menu goes to the **previous menu**.  
If the **INPUT** button is pressed, the menu disappears.



## Displaying Information and Clock

- You can view the channel information and setting status by pressing the "INFO" button on the remote control.
- You can view the clock by pressing the "OK" button on the remote control.

INFO



*In case of applying TV input*  
Press the INFO button.

Pr02 -----  
PM 12:30  
Mono  
Sleep Off

INFO



*In case of applying DTV input*  
Press the INFO button.

DTV  
PM 12:30  
Stereo  
Sleep Off  
1080i@60Hz

INFO



*In case of applying PC input*  
Press the INFO button.

PC  
PM 12:30  
Stereo  
Sleep Off  
1024x768@60Hz

INFO



*In case of applying PIP input*  
Press the INFO button.

Pr02 -----  
PM 12:30  
Pr02 SCART1  
Mono  
Sleep Off

OK





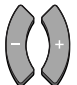



*In case of viewing only clock information.*  
Press the OK button.

PM 12:30

## Choosing Your Language

When you start using your TV for the first time, you must select your language preference in order to display main menus and sub menus, etc.

	<p><b>Press Menu button.</b> Menu items appear on the screen.</p>	<table border="0" style="width: 100%;"> <tr> <td>Picture</td> <td></td> </tr> <tr> <td>Sound</td> <td></td> </tr> <tr> <td>Clock</td> <td></td> </tr> <tr> <td>Install</td> <td></td> </tr> <tr> <td style="color: blue;">Language</td> <td></td> </tr> <tr> <td>Advanced</td> <td></td> </tr> <tr> <td colspan="2" style="border-top: 1px solid gray;">           MENU : Previous    ◀▶ : Select            INPUT : Exit        OK : Select            ▲▼ : Position         </td> </tr> </table>	Picture		Sound		Clock		Install		Language		Advanced		MENU : Previous    ◀▶ : Select INPUT : Exit        OK : Select ▲▼ : Position	
Picture																
Sound																
Clock																
Install																
Language																
Advanced																
MENU : Previous    ◀▶ : Select INPUT : Exit        OK : Select ▲▼ : Position																
<b>1</b> 	<p><b>Press Up and Down buttons to move to "Language".</b></p>															
<b>2</b> 	<p><b>Press Left and Right buttons to select "Language".</b> Language menu appears.</p>	<table border="0" style="width: 100%;"> <tr> <td style="background-color: #0070C0; color: white;">Language</td> </tr> <tr> <td style="border-top: 1px solid gray;">           &gt;&gt;English            Français            Deutsch            Italiano            Español         </td> </tr> <tr> <td style="border-top: 1px solid gray;">           MENU : Previous    ◀▶ : Select            INPUT : Exit        OK : Select            ▲▼ : Position         </td> </tr> </table>	Language	>>English Français Deutsch Italiano Español	MENU : Previous    ◀▶ : Select INPUT : Exit        OK : Select ▲▼ : Position											
Language																
>>English Français Deutsch Italiano Español																
MENU : Previous    ◀▶ : Select INPUT : Exit        OK : Select ▲▼ : Position																
<b>3</b> 	<p><b>Press Up and Down buttons to move to language you want.</b> (English, Français, Deutsch, Italian, Español)</p>															
<b>4</b> 	<p><b>Press Left, Right or OK button to select Language.</b> When it selects, the "&gt;&gt;" mark is indicated.</p>															
	<p><b>Press MENU button after the setting is done, and Menu goes to the previous menu.</b> If the INPUT button is pressed, the menu disappears.</p>															



FUNCTION SETUP



HYUNDAI WIDE LCD TV

## Clock Setup



How to Set Date and Clock .....	71
How to Set On/Off Time .....	72
How to Set Update Program .....	74
How to Set Sleep Time .....	75

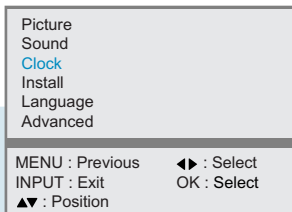


## How to Set Date and Clock

You can set the current time so that it may be displayed by pressing the "INFO" button. You must also set a clock if you wish to use the automatic on or off timers.



Press Menu button.  
Menu items appear on the screen.



1



Press Up and Down buttons to move to "Clock".

2



Press Left, Right or OK button to select "Clock".

3

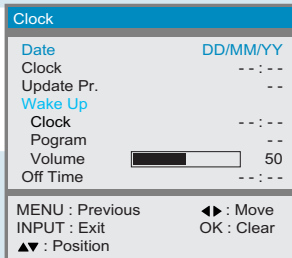


Press Up and Down buttons to move to "Date".

4



Press Left and Right buttons to move between Date-Month-Year.



5



Press Up and Down or numeric (0~9) buttons to adjust the Date, Month and Year.

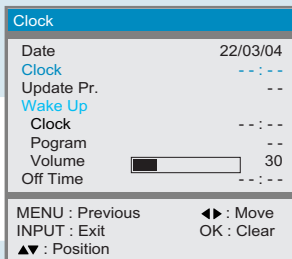
*Press the Right button and then go to step 6 if you need to set clock.*

CLOCK SETUP

6



Press Up and Down buttons to move to "Clock".



7



Press Left and Right buttons to move between Hour-Minute.

8



Press Up and Down or numeric (0~9) buttons to adjust the Hour, Minute.  
Adjust the Hour using the 24-hour system :  
Example : 6 P.M. Press 1 and 8.

**TIP**

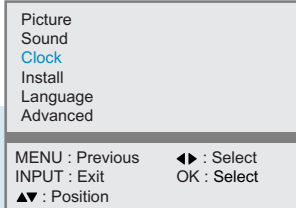
- You can erase and reset the Date and Clock by pressing the OK button.
- When the power supply AC main power is cut off, the clock is reset to the value before the Time set.

## How to Set On/Off Time

This function allows you to automatically turn on your LCD TV at the preset time.



Press Menu button.  
Menu items appear on the screen.

**1**

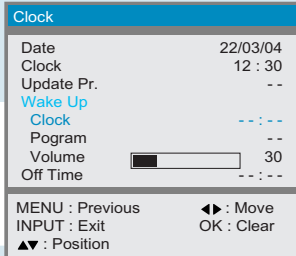
Press Up and Down buttons to move to  
"Clock".

**2**

Press Left, Right or OK button to select  
"Clock".

**3**

Press Up and Down buttons to move to  
"Wake Up(Clock)".

**4**

Press Left and Right buttons to move  
between Hour-Minute.

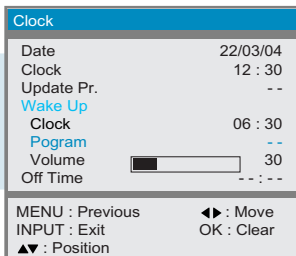
**5**

Press Up and Down or numeric (0~9) buttons  
to adjust the Hour-Minute.

*Press the Right button and then go to step 6  
if you need to set Program(TV Channel).*

**6**

Press Up and Down buttons to move to  
"Program".  
And press Right button to select "Program".



*Continued on next page .....*



..... Continued from previous page. (Set the volume level and channel at the time when your LCD turns on.)



Press the **Up** and **Down** or numeric (0~9) buttons to set the Program(Channel).

*Press the Right button and then go to step 8 if you need to set the Volume.*

Clock	
Date	22/03/04
Clock	12 : 30
Update Pr.	--
Wake Up	
Clock	06 : 30
Program	--
Volume	30
Off Time	-- : --
MENU : Previous	◀▶ : Move
INPUT : Exit	OK : Clear
▲▼ : Position	



Press **Up** and **Down** buttons to move to "Volume".



Press **Left** and **Right** buttons to adjust Volume.

*Go to step 10 if you need to set the Off Time.*

Clock	
Date	22/03/04
Clock	12 : 30
Update Pr.	--
Wake Up	
Clock	06 : 30
Program	17
Volume	30
Off Time	-- : --
MENU : Previous	◀▶ : Adjust
INPUT : Exit	
▲▼ : Position	



Press **Up** and **Down** buttons to move to "Off time".



Press **Left** and **Right** buttons to move between Hour-Minute.

Clock	
Date	22/03/04
Clock	12 : 30
Update Pr.	--
Wake Up	
Clock	06 : 30
Program	17
Volume	50
Off Time	23 : 30
MENU : Previous	◀▶ : Move
INPUT : Exit	OK : Clear
▲▼ : Position	



Press **Up** and **Down** or numeric (0~9) buttons to adjust the Hour-Minute.

INPUT



Press **MENU** button after the setting is done, and Menu goes to the **previous menu**.  
If the **INPUT** button is pressed, the **menu disappears**.



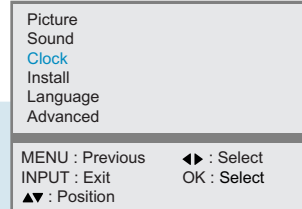
- You can erase and reset the Wake Up(Clock, Program), Off time by pressing the OK button.
- Regardless of which Input Mode you set On Time in, your LCD TV will turn on in TV Mode only.
- If the Off time has been set, "Off time 1" or "Off time 2" will be displayed 1 minute or 2 minutes before your TV turns off.

## How to Set Update Program

Set the Program number if you want to update the time and date with the information carried by the broadcast signal. If you clear the Pr. number, the auto update function does not work.



Press **Menu** button.  
Menu items appear on the screen.



1

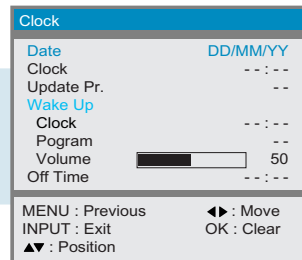


Press **Up and Down** buttons to move to **"Clock"**.

2



Press **Left, Right or OK** button to select to **"Clock"**.



3



Press **Up and Down** buttons to move to **"Update Pr."**.

4

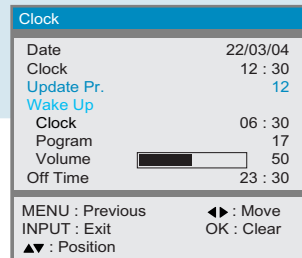


Press **Left and Right** buttons to set to **"Update Pr."**

5



Press **Up and Down or numeric (0~9)** buttons to set the program.



6



After the set is completed,  
Press the **Left and Right** buttons.  
(If you use to the numeric (0~9) buttons, omit the step 6.)

INPUT



Press **MENU** button after the setting is done, and Menu goes to the **previous menu**.  
If the **INPUT** button is pressed, the menu **disappears**.

### TIP

- You can erase and reset the program number by pressing the OK button.
- If you select Pr00, it applies to all programs.



## How to Set Sleep Time

This function is available only with the remote control.

SLEEP



Press the Sleep button, then Sleep Time changes in order below.

⇒ Sleep off ⇒ Sleep5 ⇒ Sleep10  
⇒ Sleep20 ⇒ Sleep30 ⇒ Sleep60  
⇒ Sleep90 ⇒ Sleep120 ⇒ Sleep180.

Sleep Off

**TIP**

If the Sleep time has been set, "Sleep 1" or "Sleep 2" will be displayed 1 minute or 2 minutes before your TV turns off.

# HYUNDAI WIDE LCD TV

## Appendix



Glossary .....	77
Troubleshooting .....	79
Care and Cleaning .....	81
Product Specifications .....	82



## Glossary

<b>Component video</b>	Component video is sent through three cables: two color shade (chrominance) signals and one brightness (luminance) signal. Component video achieves greater color accuracy than composite video or S-VIDEO by splitting chrominance into two separate portions.
<b>Composite video</b>	Composite video is sent through a single cable. Composite video combines the color shade (chrominance) and brightness (luminance) information into one video signal.
<b>S-VIDEO</b>	S-VIDEO requires a single cable, which carries the brightness (luminance) and color (chrominance) signals of the picture separately. S-VIDEO provides better resolution than composite video, which carries the signals together.
<b>Full Scart</b>	SCART connectors used with many European video equipments is designed to carry composite video and RGB video signals. If the equipment which outputs picture outputs RGB-signal, it will output RGB signal from the RGB pins and a complete composite video signal at the same time.
<b>Half Scart</b>	Basically is the same as Full Scart in function but does not support RGB Video signals.
<b>480i</b>	Provides 480 lines of resolution. Displays images using interlaced scanning, which first transmits all the odd lines on the TV screen and then the even lines.
<b>480p</b>	Provides 480 lines of resolution. Displays images using progressive scanning, which transmits each line from top to bottom.
<b>720p</b>	Provides 720 lines of resolution. Displays images using progressive scanning, which transmits each line from top to bottom.
<b>1080i</b>	Provides 1080 lines of resolution. Displays images using interlaced scanning, which first transmits all the odd lines on the TV screen and then the even lines. 1080i is one of the formats used by HDTV (High Definition TV).
<b>Digital television (DTV)</b>	A new technology for transmitting and receiving broadcast television signals. DTV provides higher resolution and improved sound quality over analog television.
<b>HDTV(High Definition TV)</b>	HDTV is a new kind of digital TV, creating a high quality picture, high definition. The HDTV provides a theater-like screen with an aspect ratio of 16:9. Supports 480p or higher.
<b>SDTV(Standard Definition TV)</b>	SDTV is a new kind of standard definition digital TV, having a range of lower resolution than the HDTV. Supports 480i.
<b>Cable Broadcast Receiver (Converter)</b>	A device that receives cable broadcasting. Connecting it to your TV set allows you to watch a various channels.



## HYUNDAI LCD TV HQL260WR/320WR

<b>Satellite Broadcasting</b>	Provides crisp picture and clear audio quality throughout the country via a satellite.
<b>VHF/UHF</b>	VHF (Very High Frequency) is the part of the frequency spectrum from 30 to 300 megahertz. UHF (Ultra High Frequency) is the part of the frequency spectrum from 300 to 3,000 megahertz.
<b>DVD</b>	DVD (digital versatile disc) is an optical disc that can store a huge volume of multimedia such as video, game, and audio application, etc.
<b>Coaxial Cable</b>	Coaxial cable is the kind of rounded copper cable, which is generally used for TV antenna.
<b>LNA(Low-Noise-Amplifier)</b>	Satellite applied technology. It is capable of amplifying weak signals so that any area experiencing a signal interruption may enjoy a clearer picture quality.
<b>Aspect ratio</b>	Refers to the ratio between the width and height of the screen. This TV has a 16:9 (widescreen) aspect ratio, as opposed to a 4:3 aspect ratio.
<b>PIP (Simultaneous Screen)</b>	PIP allows you to view two images at the same time in a single screen.
<b>SWAP</b>	PIP function provides a main picture (larger image) and sub-picture (smaller image). The SWAP is designed to swap the sub-picture for the main picture. For example, while you are watching a main picture on TV and watching a sub-picture on VCR, you can instantly switch the two pictures by using the SWAP function.
<b>Picture Mode</b>	Picture Mode features the optimal picture quality. There are Custom-Standard-Sport-Natural-Mild features in order. "User Control" allows you to adjust Contrast, Brightness, Colour, Tint, etc.
<b>Sound Mode</b>	Sound Mode features the optimal sound quality. There are Standard-Music-Film-Speech-Custom features in order. "User Control" allows you to adjust high frequency sound, middle frequency sound and low frequency sound.
<b>Channel Tuning</b>	The feature allows you to enjoy optimal broadcasting. This product provides automatic tuning feature for the best broadcasting status. You can tune the channels manually.
<b>SRS WOW</b>	A well-recognized 3D sound technology developed by US SRS Labs, Inc. This technology delivers the ultimate audio experience only with two speakers as if through multi-channel speakers.
<b>Teletext</b>	A signal coming along with TV images. Teletext function allows you to view information service covering news, sport, travel offers, UK TV listings, weather, showbiz interviews, film & theatre reviews and net issues.



# Troubleshooting

## Installation Problems

Symptom	Possible solution
How can I install an antenna?	Refer to pages 23~24.
TV screen is not clear after installing an indoors antenna.	Indoors antenna may experience poor reception due to surrounding buildings. Please install an outdoors antenna or wireless antenna.
How can I view cable broadcasting?	Please install a cable broadcasting receiver (Converter).

## Picture Problems

Symptom	Possible solution
Neither picture nor sound comes up.	Check whether power is on. Check whether the power is cut or whether power cord is properly connected. Try to plug another product's power cord to the outlet the LCD TV is plugged into.
Picture turns on slowly after power is on.	This symptom is not a malfunction. This delay is designed to prevent the distorted and noisy picture when power is on. However, if the picture does not appear more than 5 minutes after power is on, call a service center.
Vertical and horizontal lines and web patterns briefly appear on the picture and shake.	This symptom may be caused by interference from other electric appliances. Please avoid using a cordless phone, hairdryer, and electric drill, etc.
Input Source information only appears on black screen.	Check whether your TV is properly connected to external devices.
Poor reception on some channels.	Check whether you selected proper channels. Try re-orienting your antenna.
Black and white on some channels.	Check other channels for black and white screen. Adjust colour.
TV won't turn on.	Ensure the power cord is plugged.
Screen is too bright or too dark.	Adjust brightness.

## HYUNDAI LCD TV HQL260WR/320WR

**Auto On does not work.**

Ensure to use the remote control or power button on the product to turn off your TV. If you unplug the power cord, the stand-by consumption power becomes 0 (zero), which causes the programmed time to be erased.

**After setting the time, I turned TV off and turn it on. The programmed information has been erased.**

Ensure to use the remote control or power button on the product to turn off your TV. If you unplug the power cord, the stand-by consumption power becomes 0 (zero), which causes the programmed time to be erased.

**Sound Problems****Symptom****Possible solution**

**Too much noise occurs.**

Check whether the audio setting is in the Stereo mode. In the Stereo mode, the sound may be distorted in the area where experiences poor reception or is located far away from a TV broadcasting station.

**No sound while viewing a cable channel**

Make sure an audio or audio/video component is securely inserted into the appropriate jacks. Check other channels for sound. Check the volume settings on the cable broadcasting receiver.

**Picture is OK but sound does not come out.**

Try to press volume up/volume down buttons of your remote control.

**One of the speakers does not produce sound.**

Select sound balance and make proper adjustment. (Page 45)  
Check the speaker connection cables.

**General****Symptom****Possible solution**

**Remote control won't work.**

Check whether there is a blocking object between the remote control and LCD TV. Make sure your LCD TV is Power On. (In case of normal, LED on the front panel is in Red.)

Check whether batteries are inserted with proper polarities(+, -).

When the batteries are worn out, replace with new ones.

**Where does the S-Video cable plug in for audio output?**

Connect the two Audio jacks from the S-Video cable to the left and right ports on the Composite.

**Strange noises are heard.**

Ticking noise during or after watching is caused by the change of ambient environment such as humidity and temperature, which is characterized by plastic products. Strange ticking noise occurs because a signal is suddenly transmitted to the LCD panel. So, this is not a malfunction.

**I tried to use the TV screen as a PC monitor but it doesn't work.**

Adjust the resolution referring to the standard signal mode table. Check the specification of your video card installed in your PC. If your video card does not work in supported hardware. Try upgrading the video card's driver.



## Care and Cleaning

### Cabinet Cleaning

Wipe a soft dry cloth.

Do not use inflammables like Benzene or Thinner, or wet clothes.  
Do not scratch the panel of TV with a fingernail or pointed object.



### Screen Cleaning

Clean the screen with a soft cloth moistened in mild glass detergent and dry with a soft cloth.

Never use any solvent on the screen such as Acetone, Benzene, or Thinner, etc.

### Cleaning Inside

When the inside needs to be cleaned, contact a service center or distribution agent where the item is purchased.

It is recommended cleaning is complete before the rainy season.

## HYUNDAI LCD TV HQL260WR/320WR

## Product Specifications

MODEL		HQL260WR	HQL320WR	
<b>Display</b>	<b>Size</b>	26" Diagonal (15:9)	32" Diagonal (16:9)	
	<b>Type</b>	a-si TFT active matrix	a-si TFT active matrix	
	<b>Contrast Ratio</b>	500 :1	1000 :1	
	<b>Luiminance (cd/m<sup>2</sup>)</b>	Typical 450	Typical 450	
	<b>Viewing Angle</b>	170 (H) /170 (V)	170 (H) /170 (V)	
	<b>Resolution</b>	1280 X 768	1366 X 768	
	<b>Pixel Pictch (mm)</b>	0.4425 (H) x 0.4425 (V)	0.51075 (H) x 0.51075 (V)	
	<b>Pixel arrangement</b>	RGB Vertical stripe(Asymmetric)	RGB Vertical stripe(Asymmetric)	
<b>Input/Output</b>	<b>S-Video</b>	1 EA(with common A/V Audio)	1 EA(with common A/V Audio)	
	<b>A/V (RCA)</b>	2 EA (with Audio)	2 EA (with Audio)	
	<b>Component(Y/Cb/Cr)</b>	1 EA (with Audio)	1 EA (with Audio)	
	<b>RF</b>	1 EA	1 EA	
	<b>Scart</b>	<b>Full</b>	RGB (In), CVBS (In, Out)	RGB (In), CVBS (In, Out)
		<b>Half</b>	CVBS (In, Out)	CVBS (In, Out)
	<b>PC</b>	<b>Connector</b>	D-SUB	D-SUB
		<b>Max. Resolution</b>	1024 X 768 @ 75 Hz	1024 X 768 @ 75 Hz
		<b>Audio</b>	Component Audio(Common)	Component Audio(Common)
	<b>Headphone</b>	1 EA	1 EA	
<b>Video System</b>		CVBS, S-VHS, RGB, Component	CVBS, S-VHS, RGB, Component	
<b>Power</b>	<b>Supply</b>	AC 100 - 240 V, 50/60 Hz	AC 100 - 240 V, 50/60 Hz	
	<b>Consumption</b>	Typical 120W	Typical 140W	
	<b>Saving</b>	Typical 1.8W / (< 2.5W)	Typical 3W	
<b>Dimension(W x D x H mm)</b>		814 x 223 x 491 (with stand)	957 x 223 x 556 (with stand)	
<b>Weight</b>		16 Kg (with stand)	18 Kg (with stand)	
<b>Control Type</b>		Remote Control, Key Control	Remote Control, Key Control	

- Specification is subject to change without notice for performance improvement.
- Specification on 'dead pixel' of LCD panel applies to ISO13406-2 Standard.

## Free Manuals Download Website

<http://myh66.com>

<http://usermanuals.us>

<http://www.somanuals.com>

<http://www.4manuals.cc>

<http://www.manual-lib.com>

<http://www.404manual.com>

<http://www.luxmanual.com>

<http://aubethermostatmanual.com>

Golf course search by state

<http://golfingnear.com>

Email search by domain

<http://emailbydomain.com>

Auto manuals search

<http://auto.somanuals.com>

TV manuals search

<http://tv.somanuals.com>